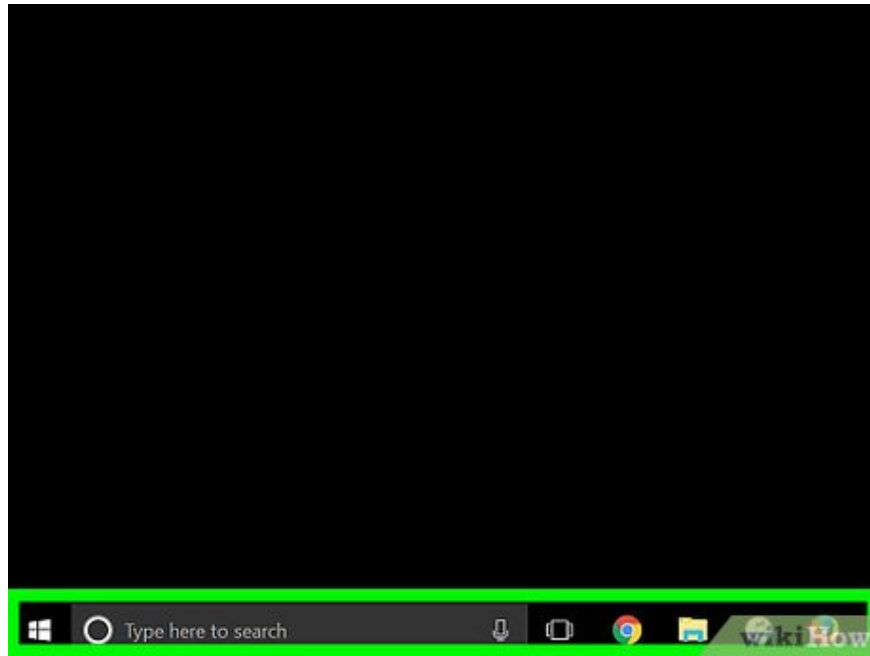


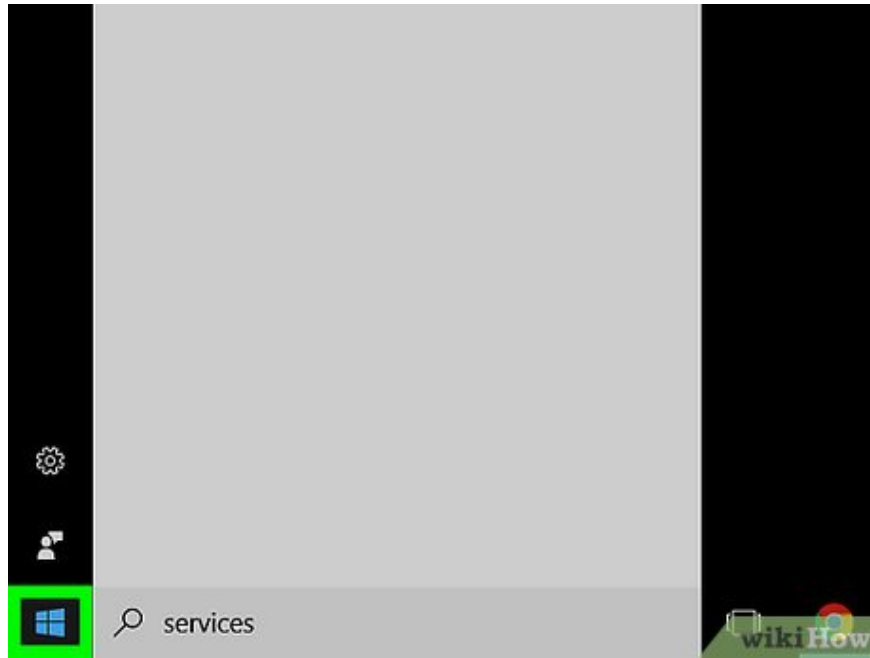
How to Restart a Windows Computer Remotely Using the Command Line

Today's TipsMake will show you how to restart another computer on the network from your own computer using the Windows Command Prompt application. To restart a remote computer with Command Prompt, that computer must be set up to start remotely and at the same time connected to your Internet network.

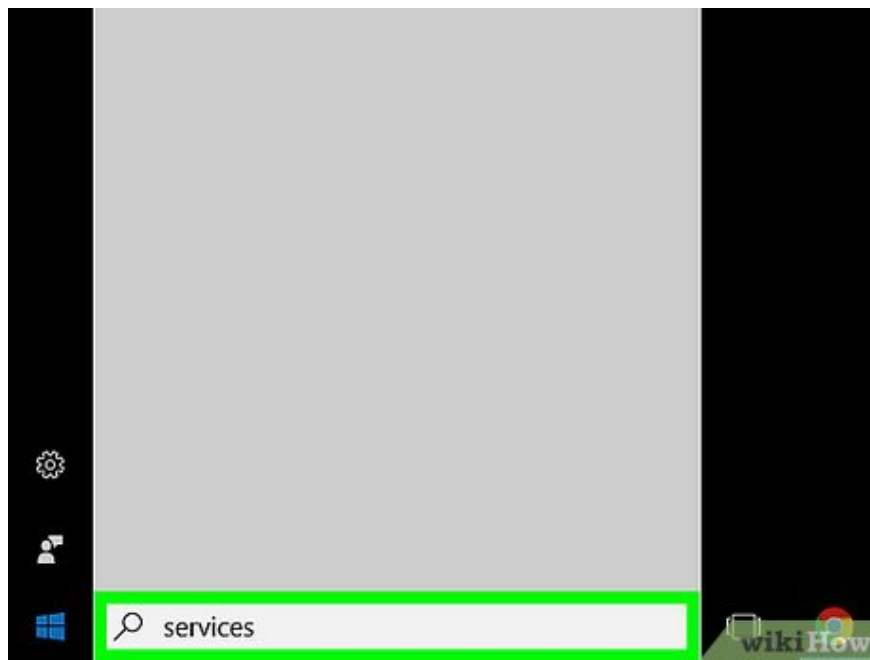
Enable remote start



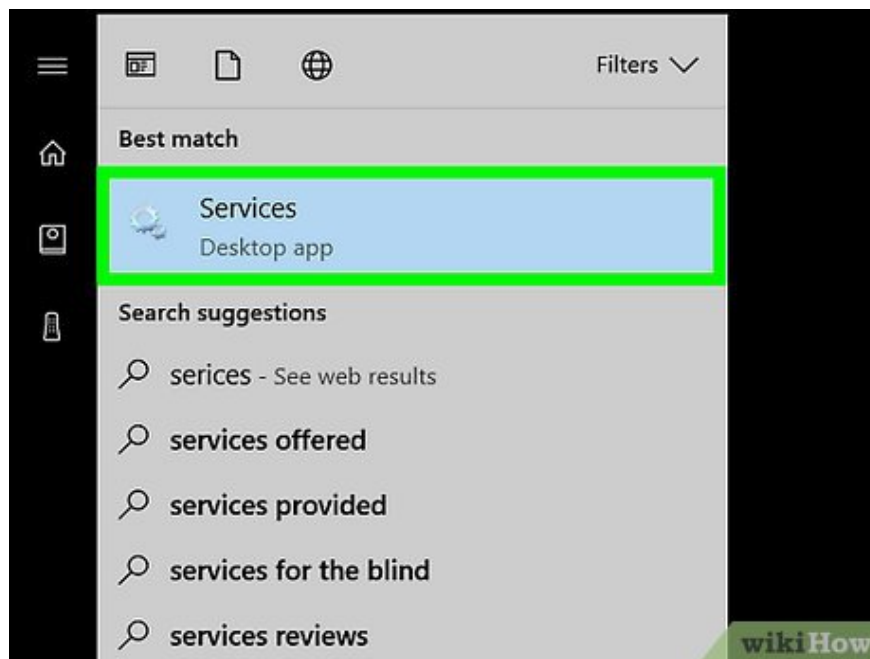
You need to make sure you're using the computer you want to restart. Before restarting a computer remotely on the network, you must set up the computer to receive remote instructions.



Open Start . Click the Windows icon in the lower left corner of the screen.

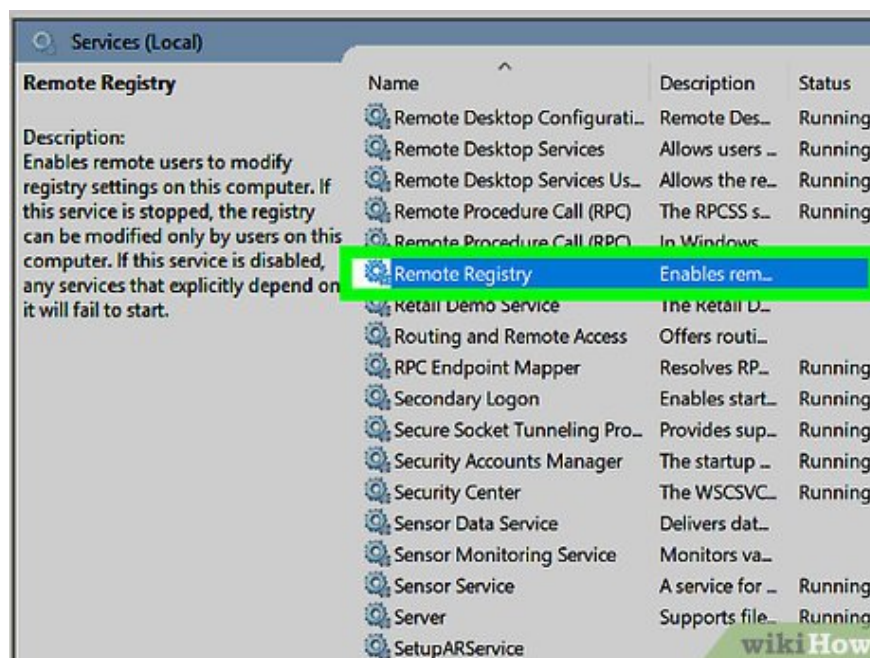


Enter servicesStart. Your computer will find the Services application.

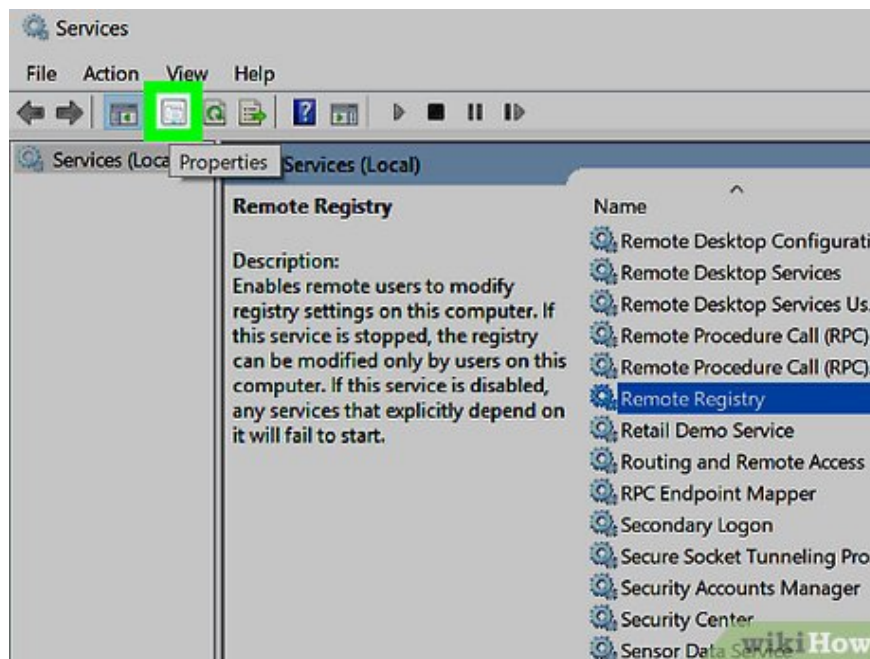


Click the gear-shaped Services option at the top of the Start window. The Services window will open.

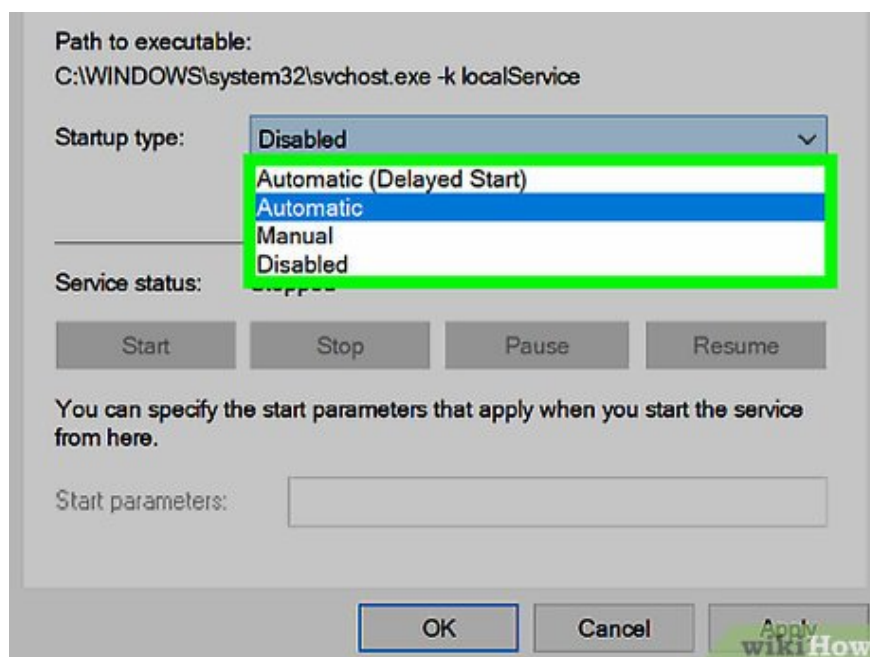
If this option doesn't appear, type `services.msc` Start to force the application to appear.



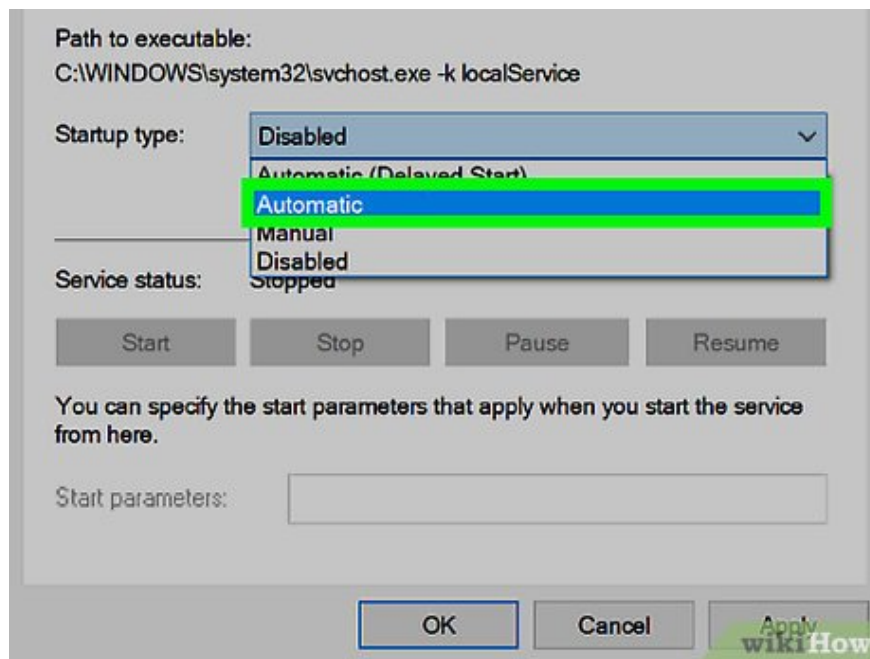
Scroll down and click **Remote Registry** . This option is located in the "R" section of the main window. Click **Remote Registry** to select it.



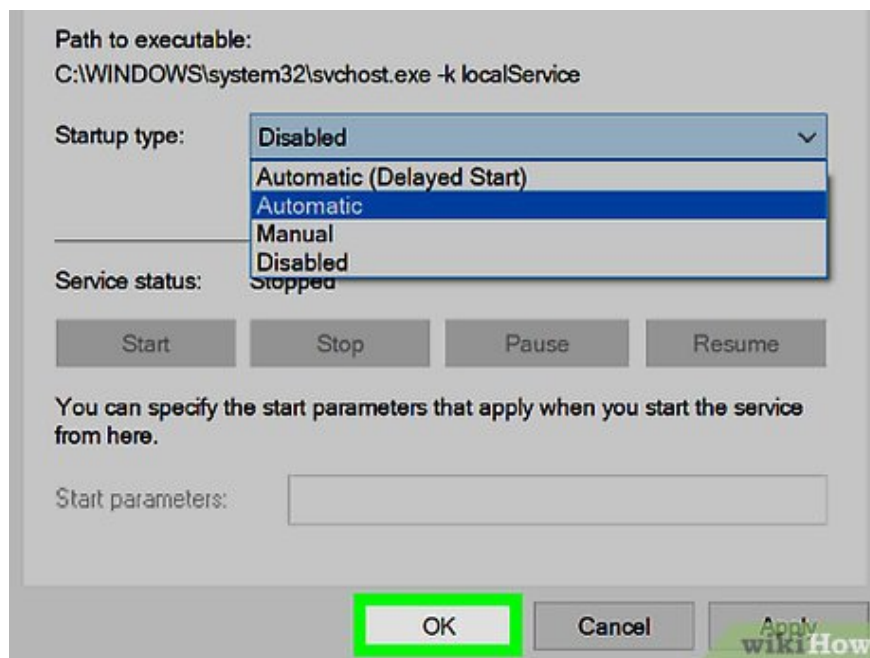
Click the folder-shaped "Properties" icon in the gray frame just below the View tab at the top of the window. The Properties window will open.



Click the "Startup type" drop-down box. This box is to the right of the "Startup type" heading in the middle of the window. A drop-down menu will appear.



Select Automatic . Click **Automatic** in the drop-down menu.

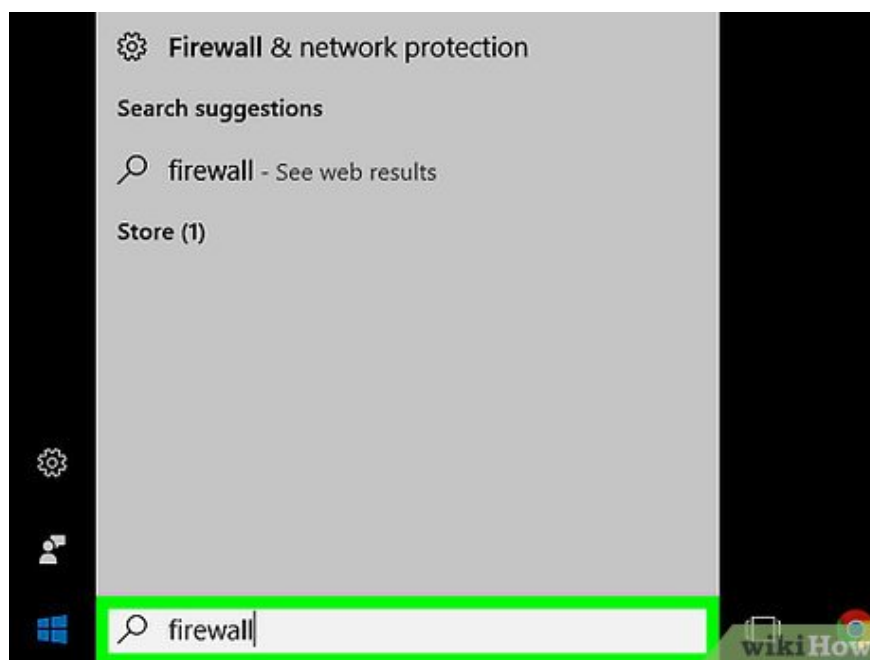


Click OK at the bottom of the window. So this computer has been enabled for remote restart.

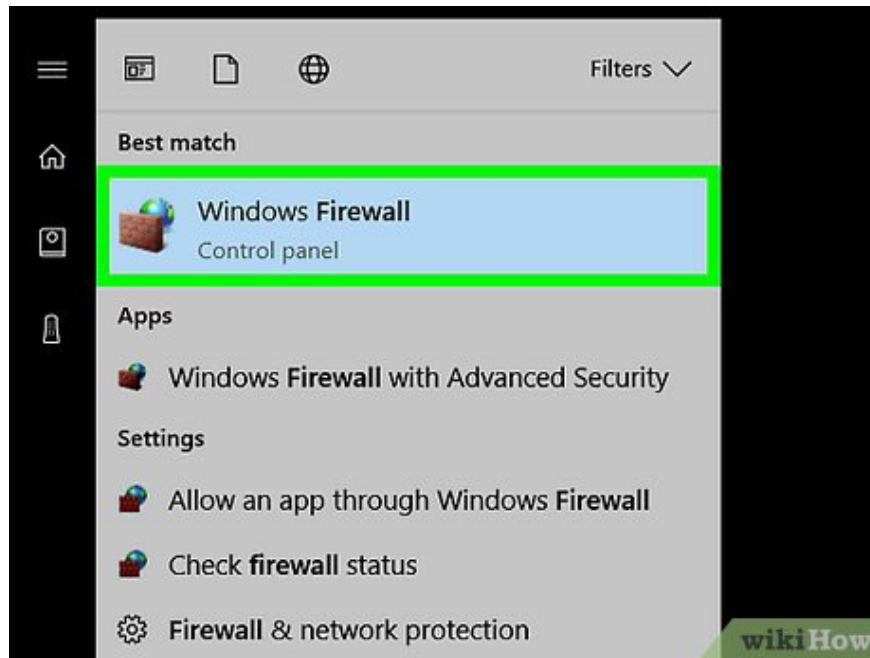
Allow remote boot on Firewall



Open Start . You need to make sure you're still using the computer you want to remotely restart.



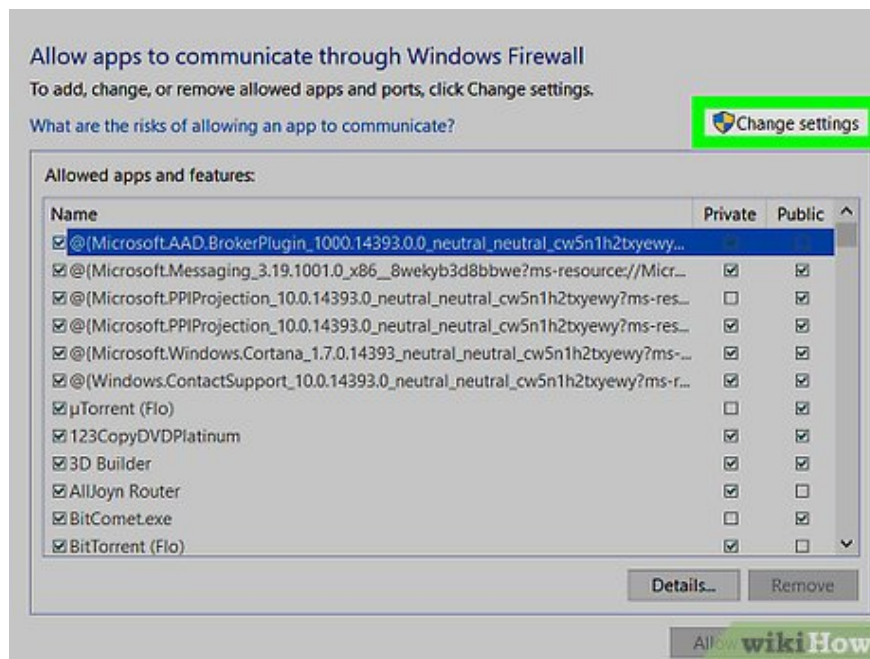
Enter firewallStart. The Windows Firewall application will be found.



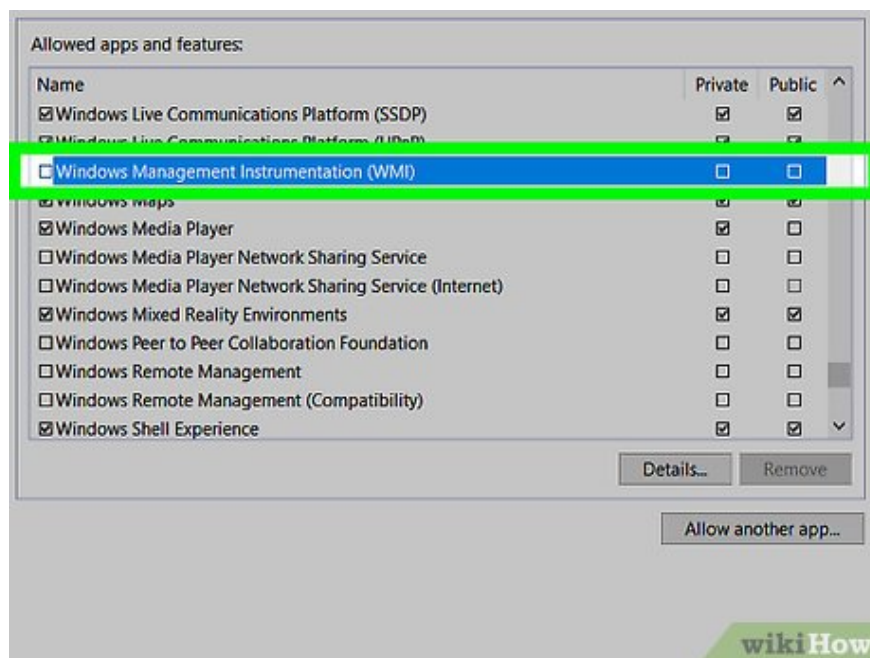
Click **Windows Firewall** . The app has a globe and a brick wall at the top of the Start window.



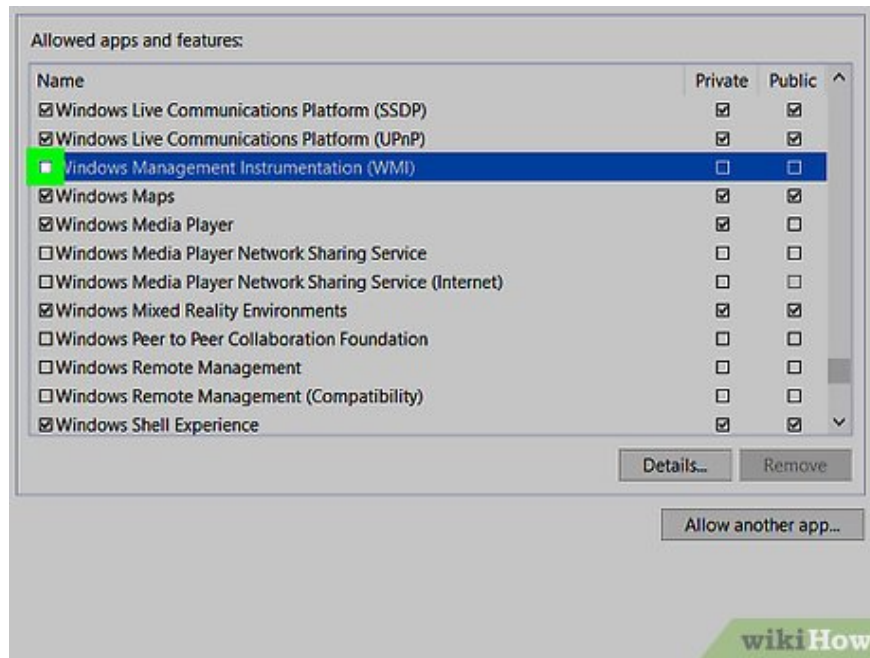
Click **Allow an app or feature through Windows Firewall**. This link is in the upper left corner of the window. A list of programs and services on your computer opens.



Click **Change settings** . Options in the upper right corner of the program list. List of programs to be unlocked.

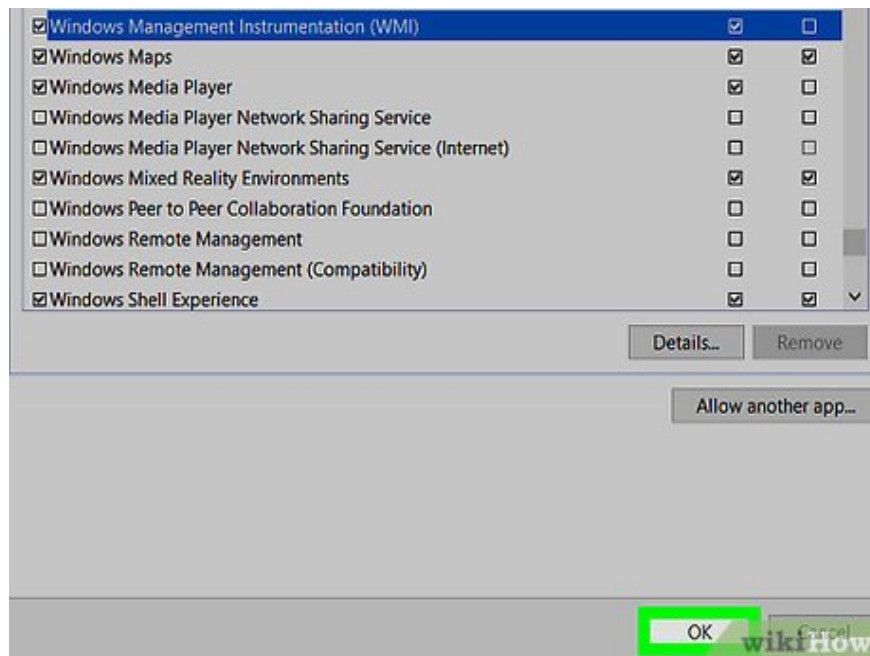


Scroll down to the **"Windows Management Instrumentation (WMI)"** option. This option is near the bottom of the program list.



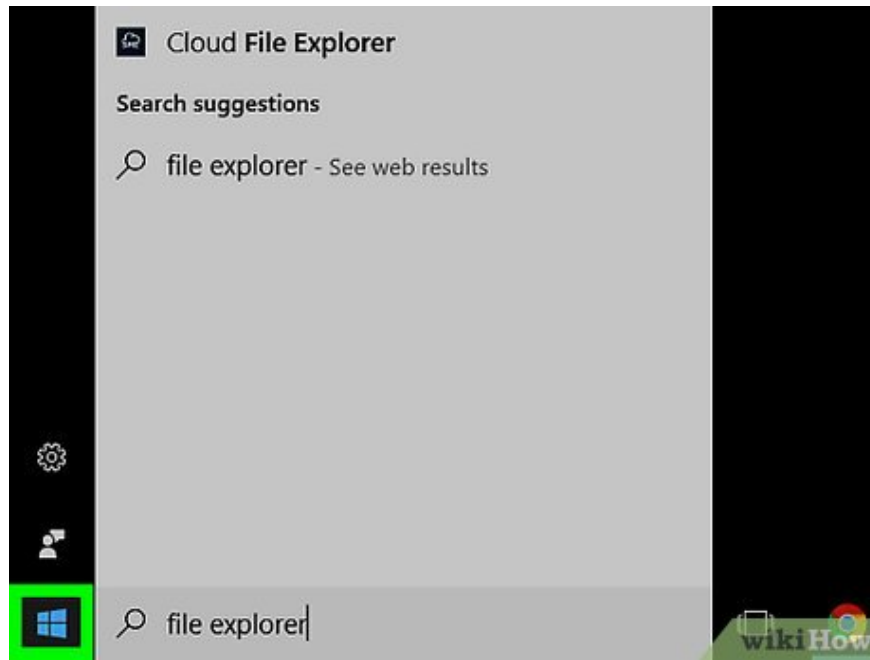
Check the "Windows Management Instrumentation" box to the left of this option.

If this computer is on a public network, you will need to check the "Public" box on the right side of the page.

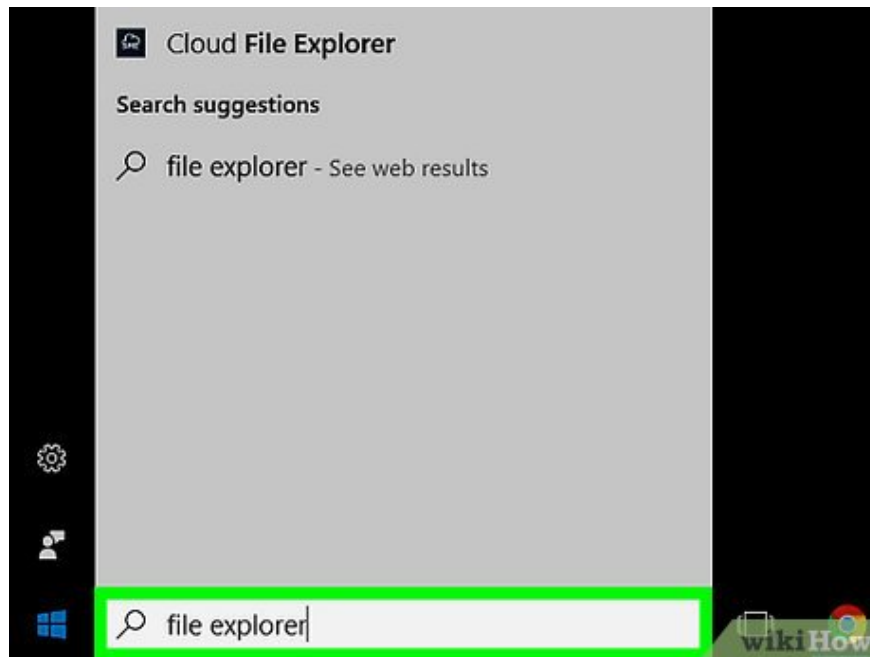


Click OK at the bottom of the window. The computer will no longer block remote access through the firewall.

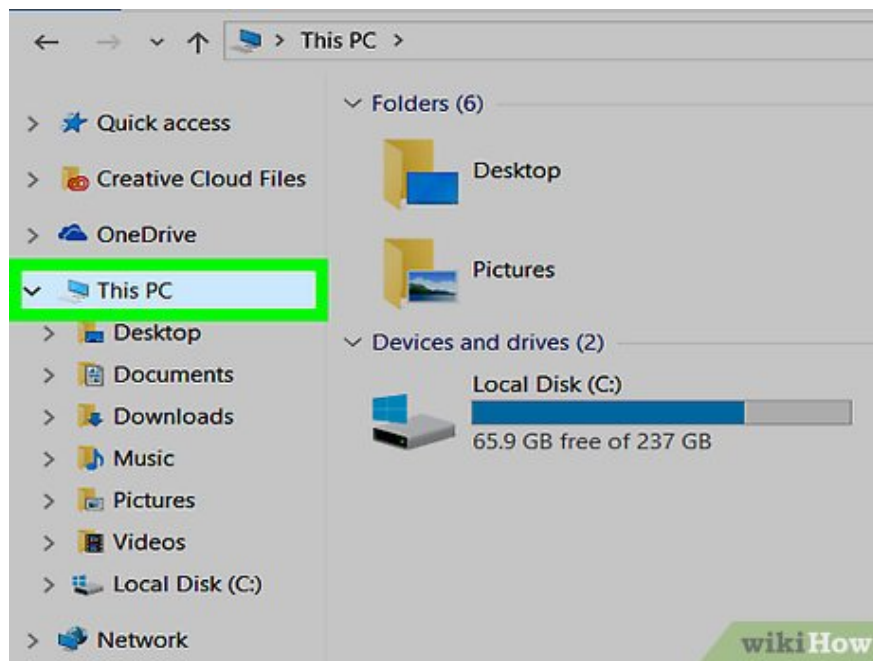
Find the computer name



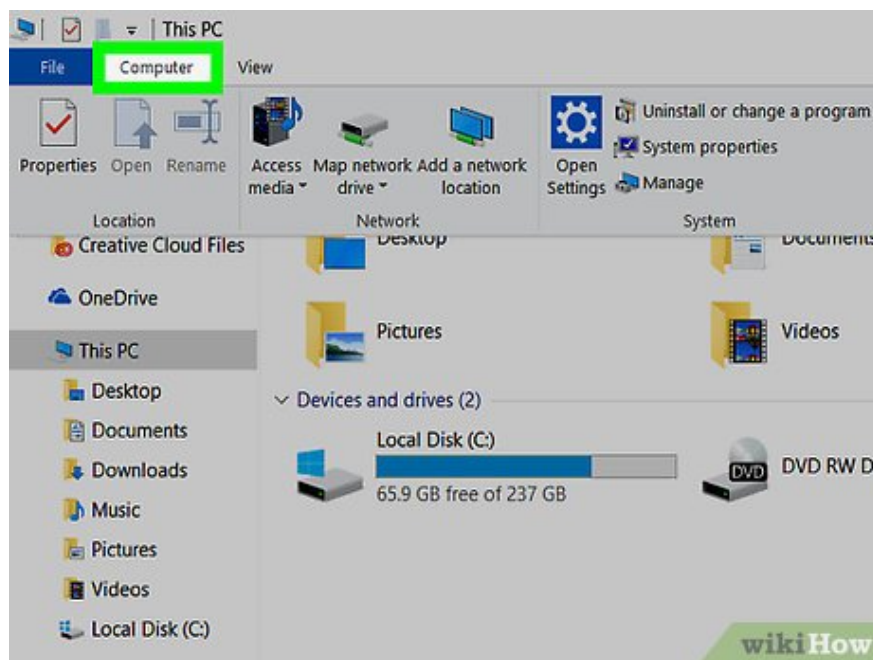
Open Start . Again, you must do this on the computer you want to restart, not the computer to which you are sending the "Restart" command.



Open File Explorer. Click the folder icon on the Start window.



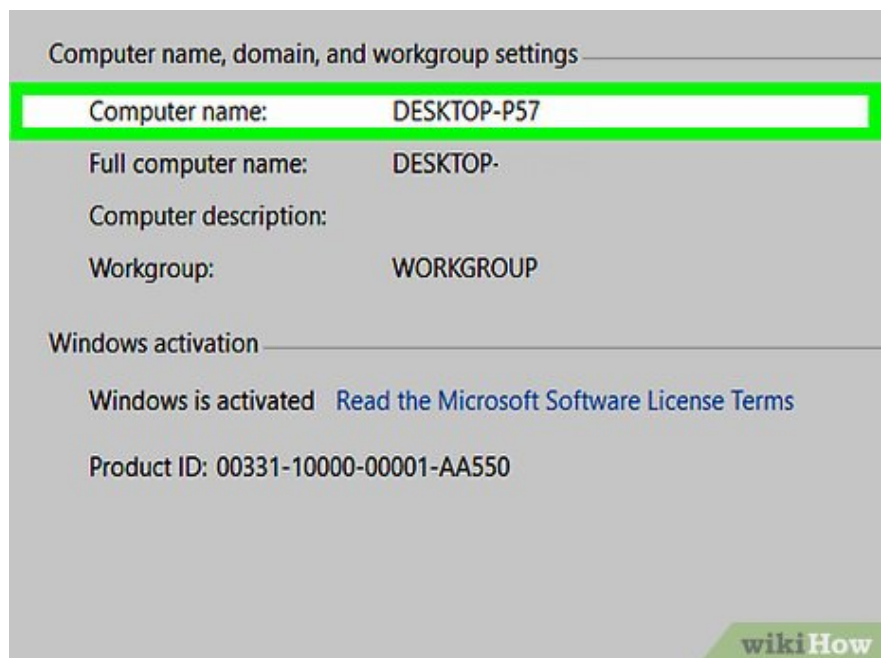
Click This PC . This desktop image option is on the left side of the File Explorer window.



Click the Computer tab in the upper left of the window. A toolbar will appear below the card.



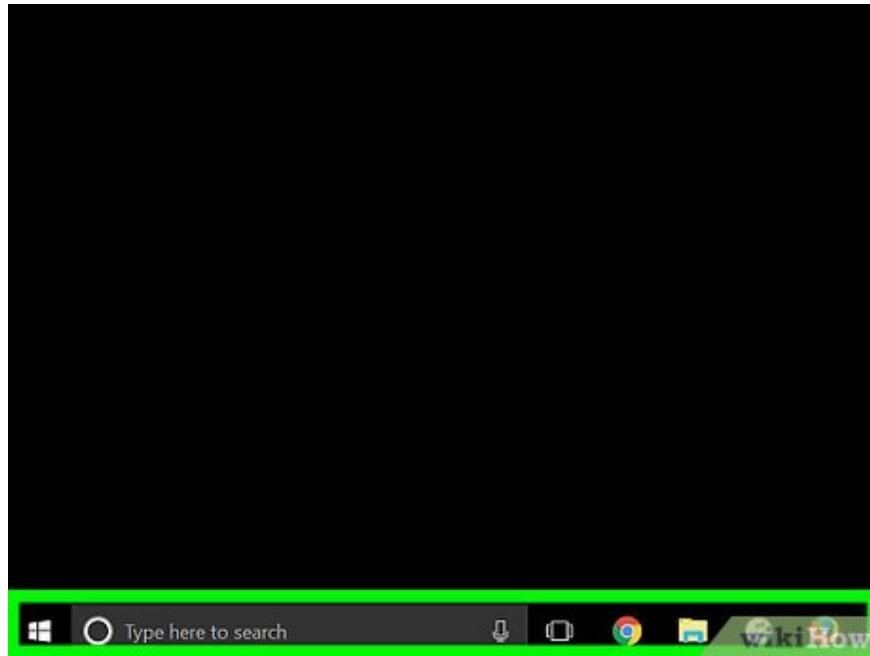
Click Properties . This option has a red check mark in a white frame on the left side of the toolbar. The computer's Properties page opens.



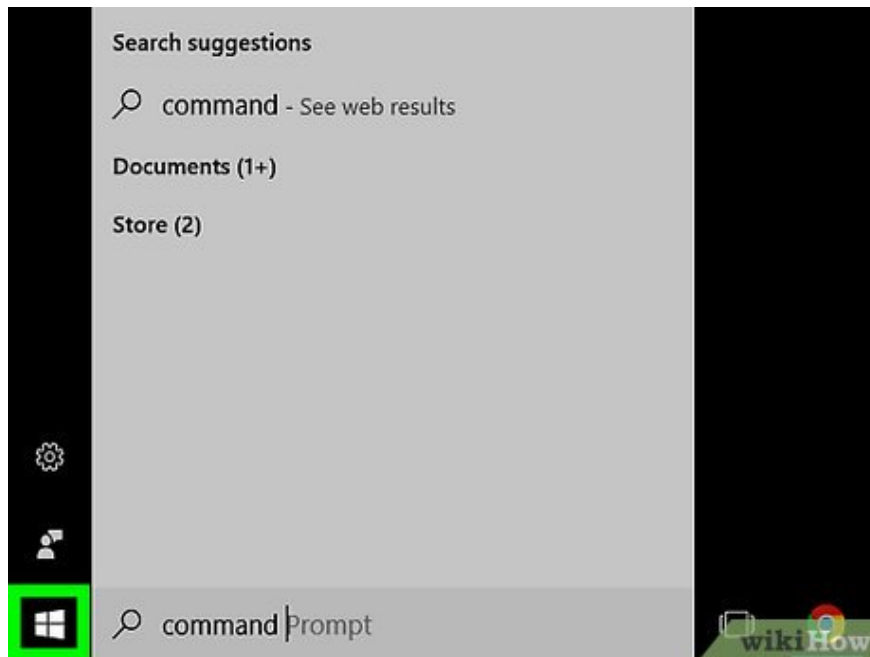
Record the computer name. The "Computer name" section will appear below the "Computer name, domain, and work group settings" heading in the center of the page.

You need to write down the exact computer name displayed in this menu.

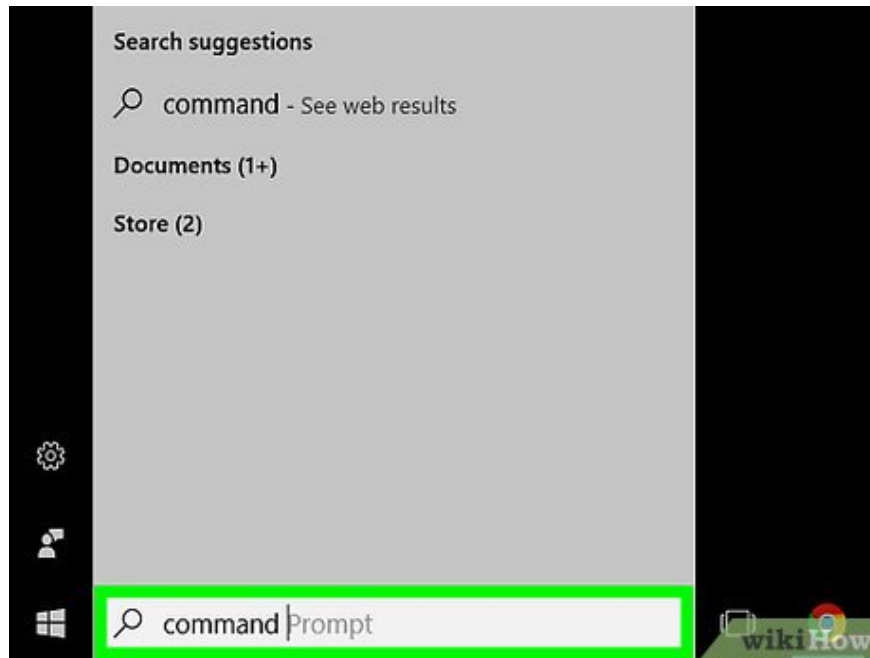
Restart via Command Prompt



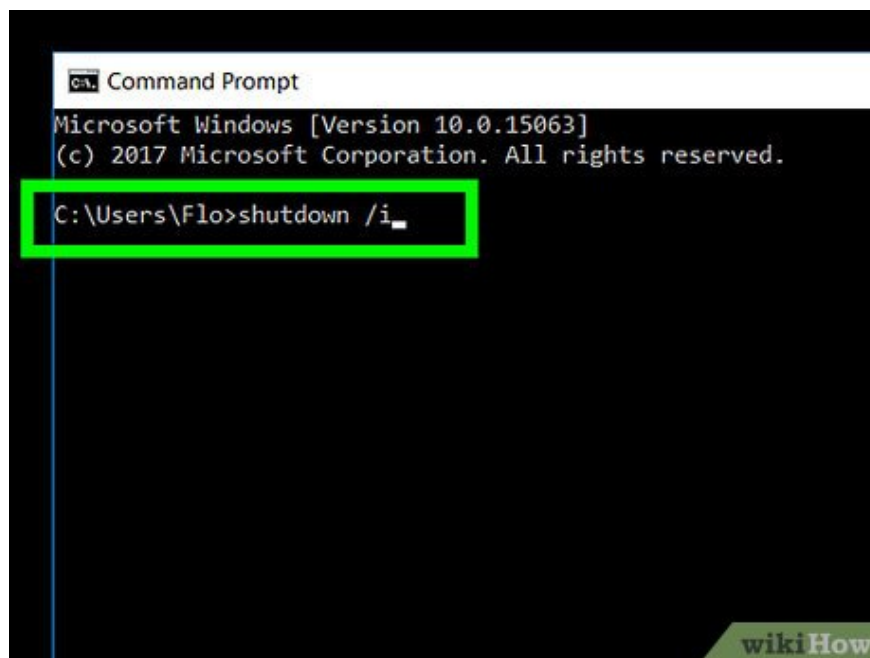
Open another computer on your network. This computer must have administrator rights and be on the same network as the computer you want to restart.



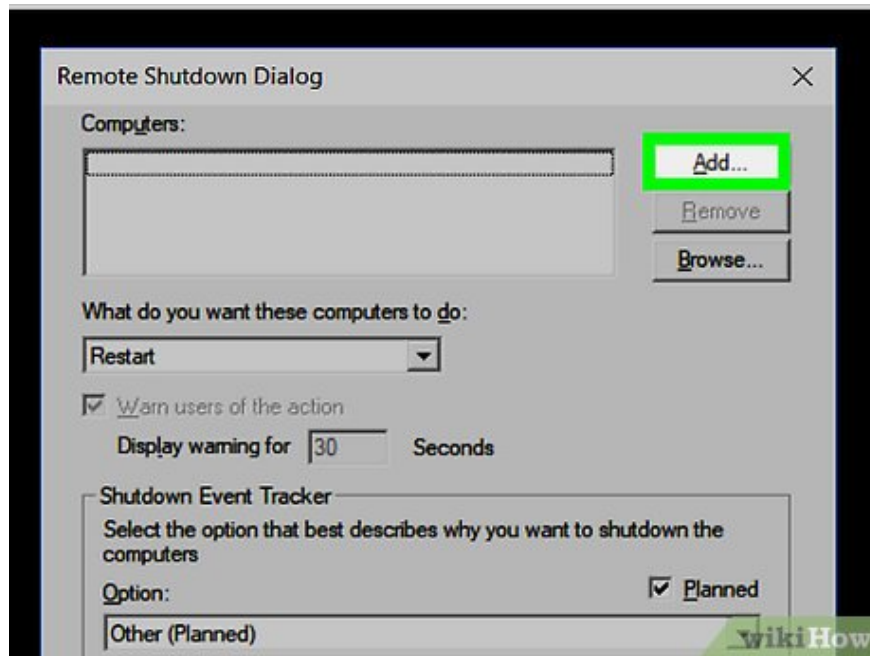
Open Start . Click the Windows icon in the lower left corner of the screen.



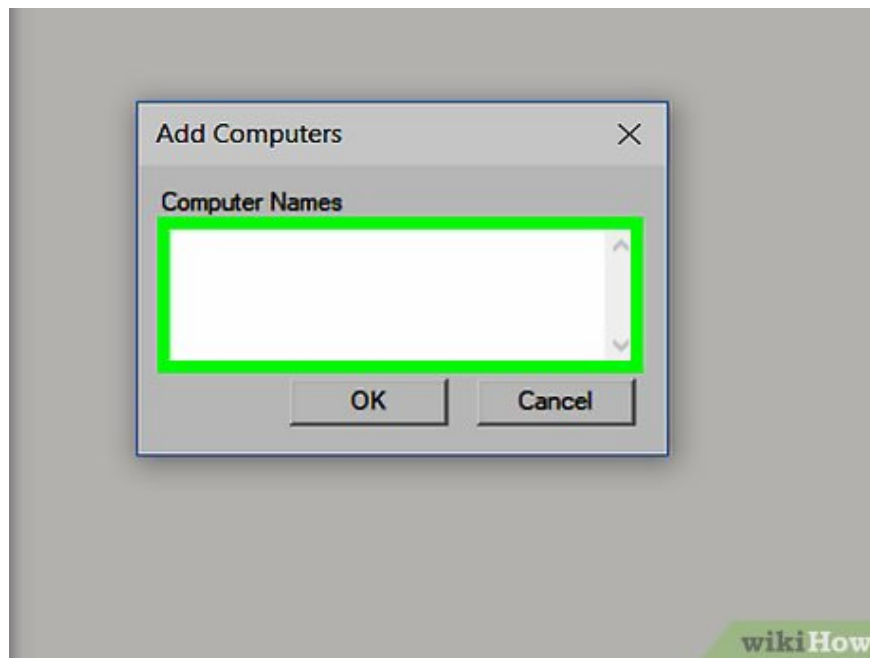
Enter `cmd` then press `?` **Enter**. Command Prompt will open.



Type `shutdown /i` into Command Prompt, then press `?` **Enter**. This command will open a window for you to remotely restart another computer.

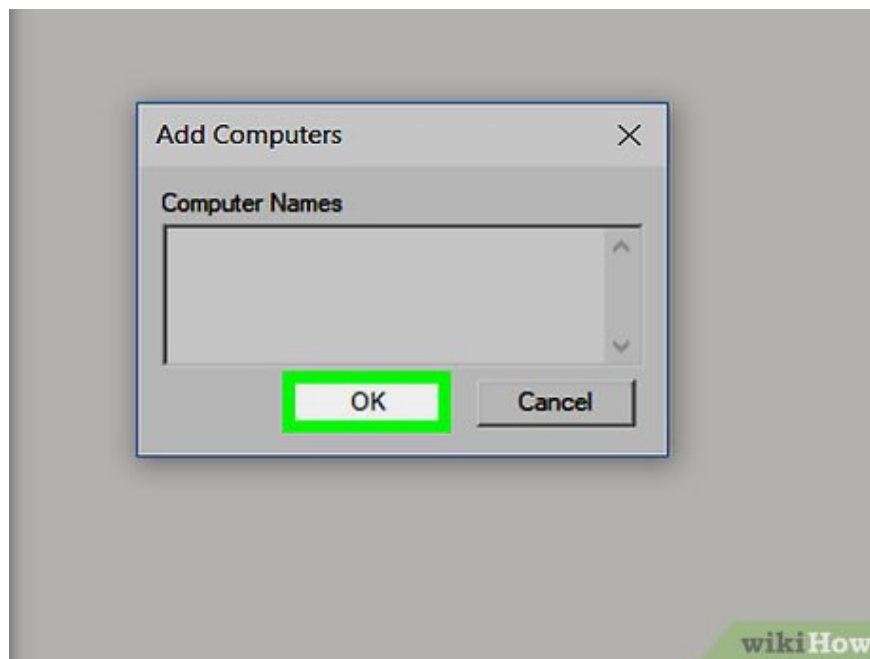


Click **Add...** on the right side of the window. Another window will open.

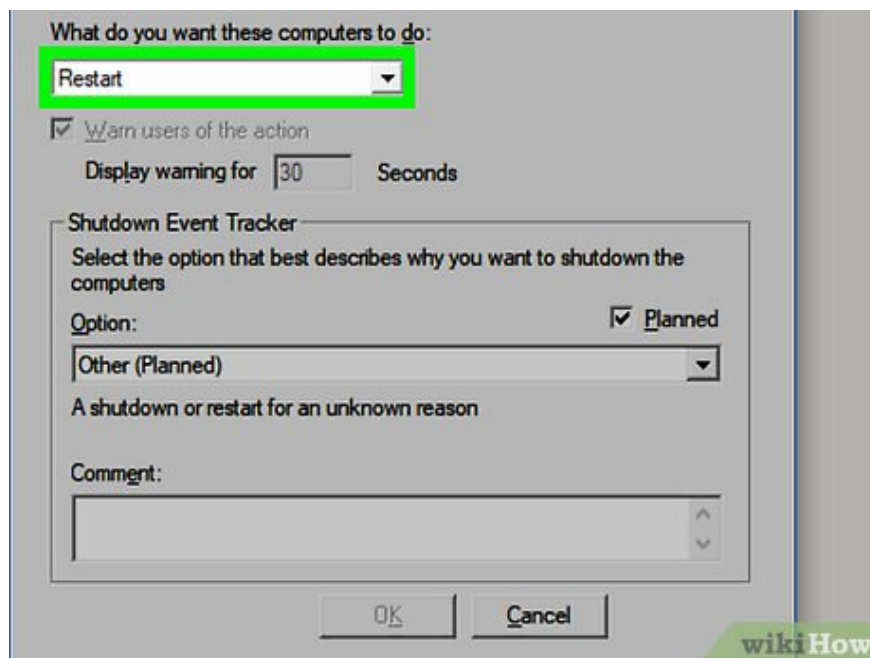


Enter another computer name. Enter the name of the computer you want to restart in the text field on the window.

If you haven't looked up the computer name before, do so before continuing.

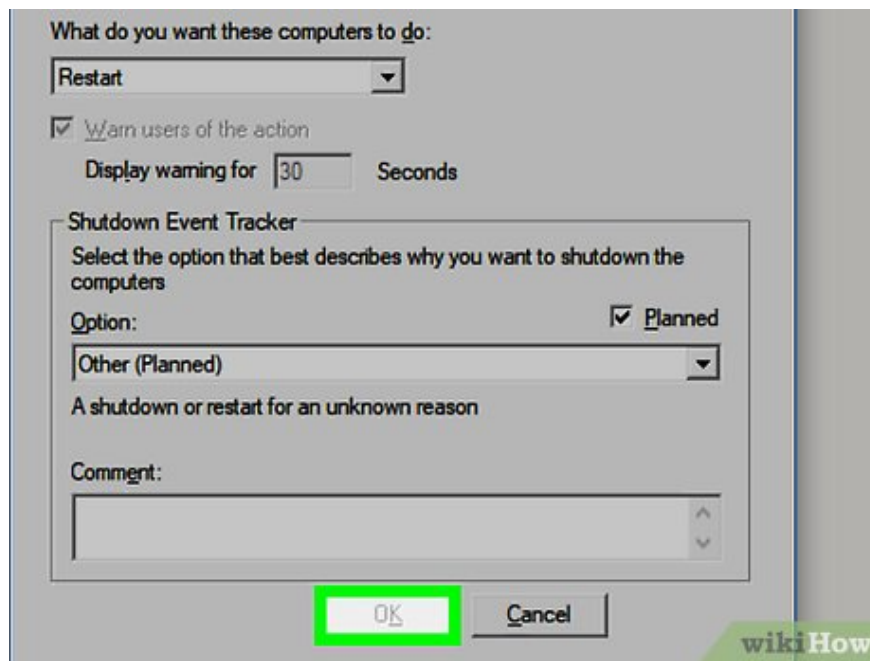


Click OK at the bottom of the window.



You need to make sure that computer is set up to reboot. In the "What do you want these computers to do" section, click the drop-down box and select **Restart** if the option isn't already visible here.

You can also check or uncheck the option to send a warning to users of this computer before shutting down, or you can customize the time limit for restarting (by default it is 30 seconds).



Click OK at the bottom of the screen. The other computer will restart immediately after the time limit expires.

You finished reading the article "**How to Restart a Windows Computer Remotely Using the Command Line**" edited by the [TipsMake](#) team. We hope this article has provided you with many useful tech tips and tricks. You can search for similar articles on tips and guides. Thank you for reading and for following us regularly.