

# How to reset Windows Terminal to default settings on Windows 10

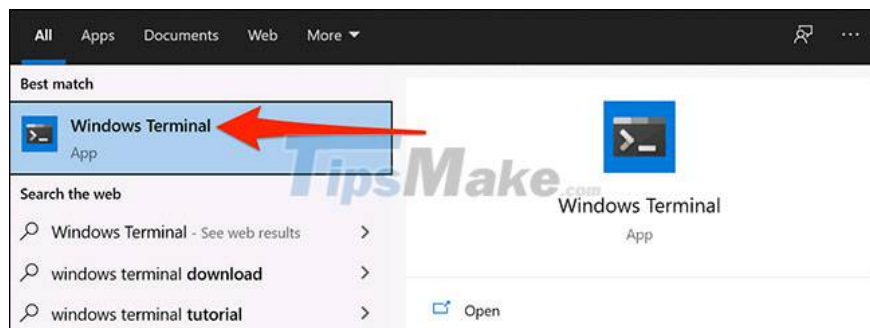
Windows Terminal allows you to customize many different setup options. This is also the highly appreciated factor of this tool. However, if I have made too many changes to the Windows Terminal and want to revert to the default settings, what should I do? ,

In this case, it is possible to reset Windows Terminal to its default settings with just a few simple taps.

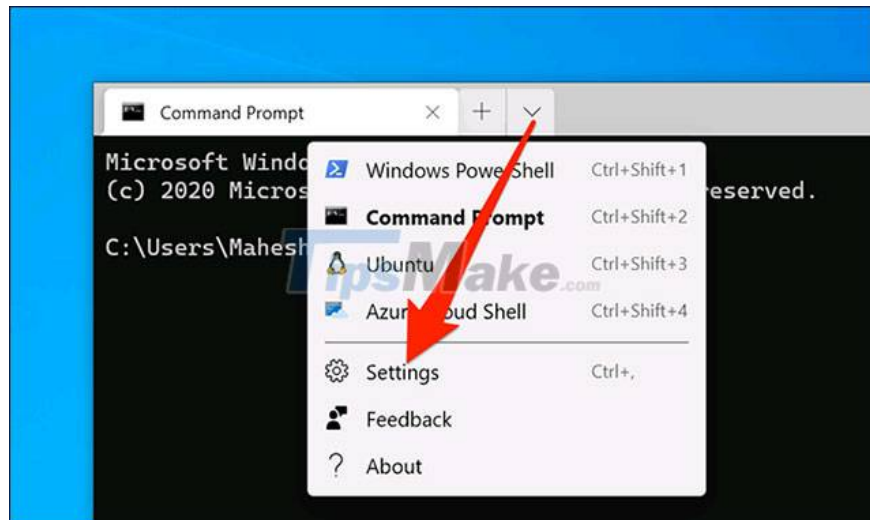
## How to restore Windows Terminal to factory settings

Unlike many other applications on Windows 10, Windows Terminal does not have a dedicated option for you to reset the installation state of software. Instead, the user will have to manually delete the installation files that were previously added to return the program to its original default setting.

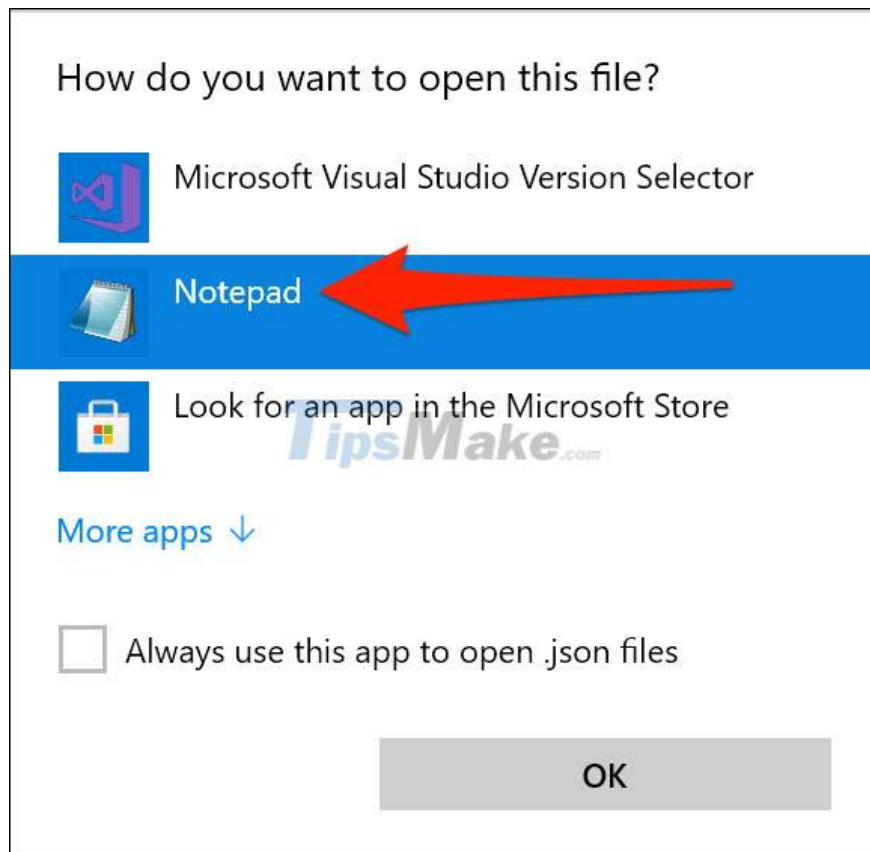
First, open the ' **Start** ' menu , find the keyword ' **Windows Terminal** ' and click on the corresponding application in the results.



In the Windows Terminal window, click the down arrow icon and select ' **Settings** '.



When Windows Terminal asks you how you want to open the installation file, select ' **Notepad** ' from the list and click ' **OK** '.



When the installation file opens, press **Ctrl + A** to highlight the entire file contents. Then, press **Backspace** to delete all of this content.

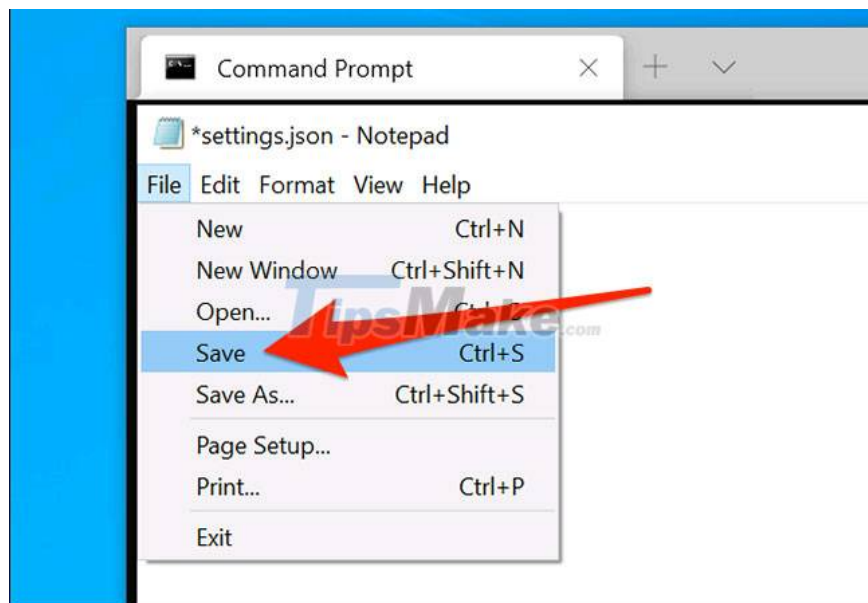
( **Warning** : If you want to keep your custom settings, make sure you copied them over to a new Notepad document before deleting. Thanks to that, you can easily restore your settings. after that).

```
settings.json - Notepad
File Edit Format View Help
// This file was initially generated by Windows Terminal 1.6.10571.0
// It should still be usable in newer versions, but newer versions might have additional
// settings, help text, or changes that you will not see unless you clear this file
// and let us generate a new one for you.

// To view the default settings, hold "alt" while clicking on the "Settings" button.
// For documentation on these settings, see: https://aka.ms/terminal-documentation
{
  "$schema": "https://aka.ms/terminal-profiles-schema",
  "defaultProfile": "{0caa0dad-35be-5f56-a8ff-afceeeaa6101}",
  // You can add more global application settings here.
  // To learn more about global settings, visit https://aka.ms/terminal-global-settings

  // If enabled, selections are automatically copied to your clipboard.
  "copyOnSelect": false,
}
```

Your installation file is now empty. Click **File> Save** in Notepad to save this blank file.



Exit Windows Terminal and re-access it. The application will notify that your installation file is empty and will automatically generate a new installation file with default values.

You finished reading the article "**How to reset Windows Terminal to default settings on Windows 10**" edited by the [TipsMake](#) team. We hope this article has provided you with many useful tech tips and tricks. You can search for similar articles on tips and guides. Thank you for reading and for following us regularly.