

How to reset the status to expand the File Explorer navigation pane on Windows 10

This article will show you how to reset the expanded state of the navigation pane in File Explorer to the default state on Windows 10.

You can use the navigation pane in File Explorer to access locations like Quick access, OneDrive, Libraries, This PC, Network and Homegroup. You can also move or copy items directly to another location in the navigation pane.

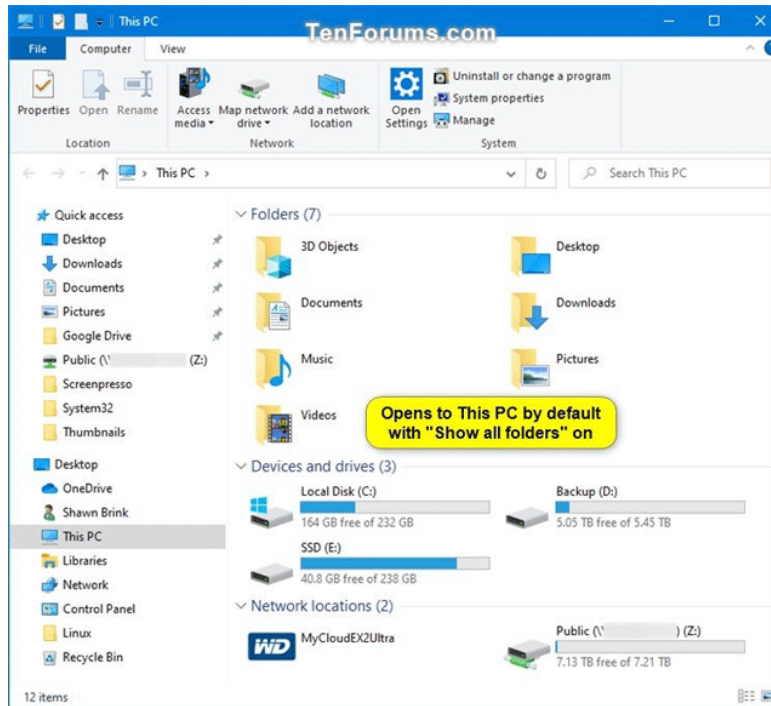
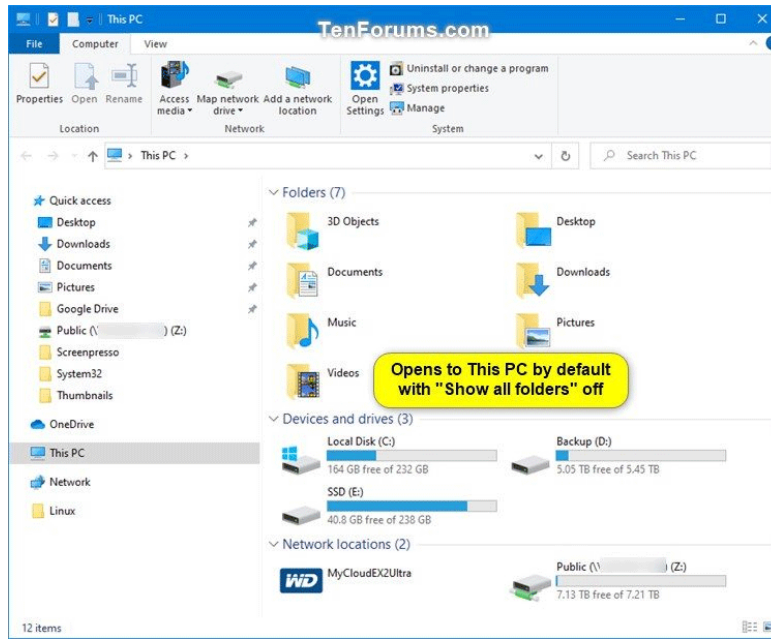
When opening folders in the right pane of File Explorer, the navigation pane will not automatically expand the current open folder by default.

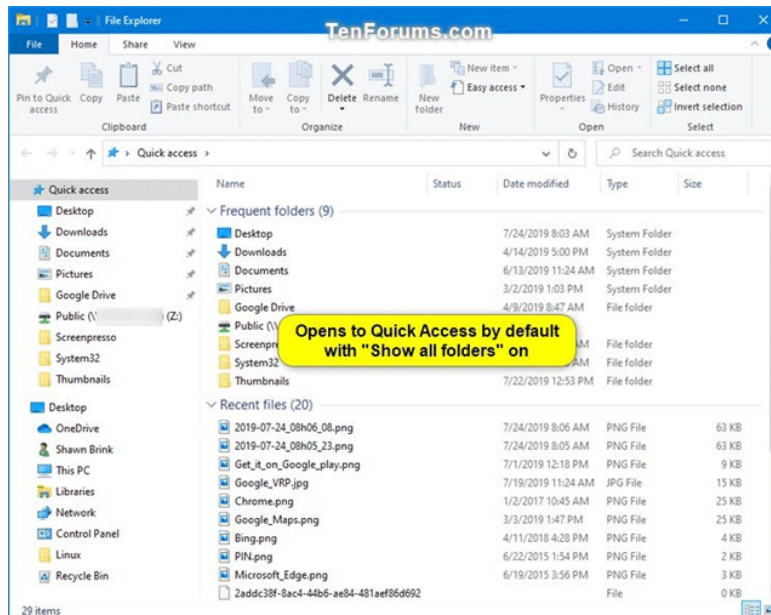
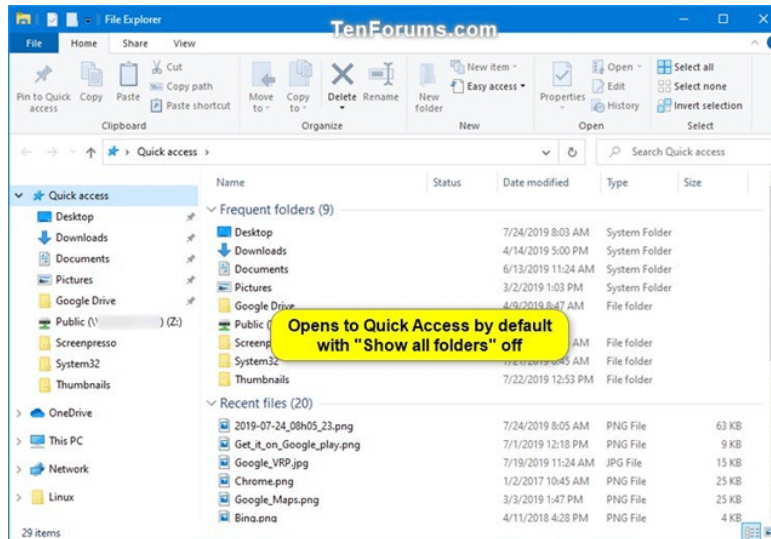
When you expand a folder in the File Explorer navigation pane, this extension status is saved to the registry. The next time you open File Explorer, you'll see the state of the last navigation extension.

Although you can set the expanded state of this navigation pane manually, you can also reset it to the default state. This article will show you how to reset the expanded state of the navigation pane in File Explorer to the default state on Windows 10.

1. Restore lost File Explorer icons on Windows 10 Start Menu
2. How to share files from File Explorer quickly
3. Fix File Explorer error not working on Windows 10

Below is an example of the navigation drawer expansion state.





1. Reset status to expand navigation pane in File Explorer with REG file

Step 1 . Download the file according to the link below.

<https://www.tenforums.com/attachments/tutorials/241199d1564001273-reset-navigati>

Code:

Windows Registry Editor Version 5.00 [HKEY_CURRENT_USERSOFTWAREMicrosoftWindowsC

Step 2 . Save the .reg file on the desktop.

Step 3 . Close all versions of the opened File Explorer window.

Step 4 . Double click on the downloaded .reg file to merge it.

Step 5 . When prompted, click on **Run, Yes (UAC), Yes** and **OK** to agree to merge.

Step 6 . Now you can delete the downloaded .reg file if you want.

The next time you open File Explorer (Win + E), the expanded state of the navigation pane will be reset to the default view.

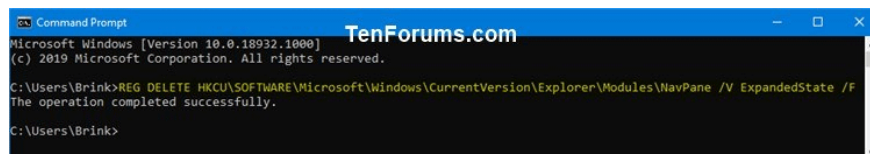
2. Reset status to expand navigation pane in File Explorer by using Command Prompt

Step 1 . Close all versions of the opened File Explorer window.

Step 2 . Open Command Prompt or PowerShell.

Step 3 . Copy and paste the following command into the command line window and press **Enter** .

```
REG DELETE HKCUSOFTWAREMicrosoftWindowsCurrentVersionExplorerModulesNavPane /V E
```

A screenshot of a Windows Command Prompt window. The title bar shows "Command Prompt" and "TenForums.com". The window content displays the following text: "Microsoft Windows [Version 10.0.18932.1000] (c) 2019 Microsoft Corporation. All rights reserved. C:\Users\Brink>REG DELETE HKCU\SOFTWARE\Microsoft\Windows\CurrentVersion\Explorer\Modules\NavPane /V ExpandedState /F The operation completed successfully. C:\Users\Brink>".

```
Microsoft Windows [Version 10.0.18932.1000]
(c) 2019 Microsoft Corporation. All rights reserved.

C:\Users\Brink>REG DELETE HKCU\SOFTWARE\Microsoft\Windows\CurrentVersion\Explorer\Modules\NavPane /V ExpandedState /F
The operation completed successfully.

C:\Users\Brink>
```

Step 4 . You can now close the Command Prompt or PowerShell window.

When opening File Explorer, the expanded state of the navigation pane will be reset to the default view.

I wish you all success!

You finished reading the article "**How to reset the status to expand the File Explorer navigation pane on Windows 10**" edited by the [TipsMake](#) team. We hope this article has provided you with many useful tech tips and tricks. You can search for similar articles on tips and guides. Thank you for reading and for following us regularly.