

# How to reset network data usage on Windows 10

Windows 10 has a feature that allows you to view PC network data usage in the past 30 days. This article will show you how to reset network data usage to 0 when needed on Windows 10.

Windows 10 has a feature that allows you to view PC network data usage in the past 30 days. The use of data is divided into sections on each type of network (for example, Wi-Fi or wired network) and the usage of each application.

Starting with Windows build 18956, network data usage is now combined to display on the network status page. This article will show you how to reset data using network data to 0 when needed on Windows 10.

**Note:** You must log on as an administrator to be able to reset network data usage.

## Instructions to reset network data usage on Windows 10

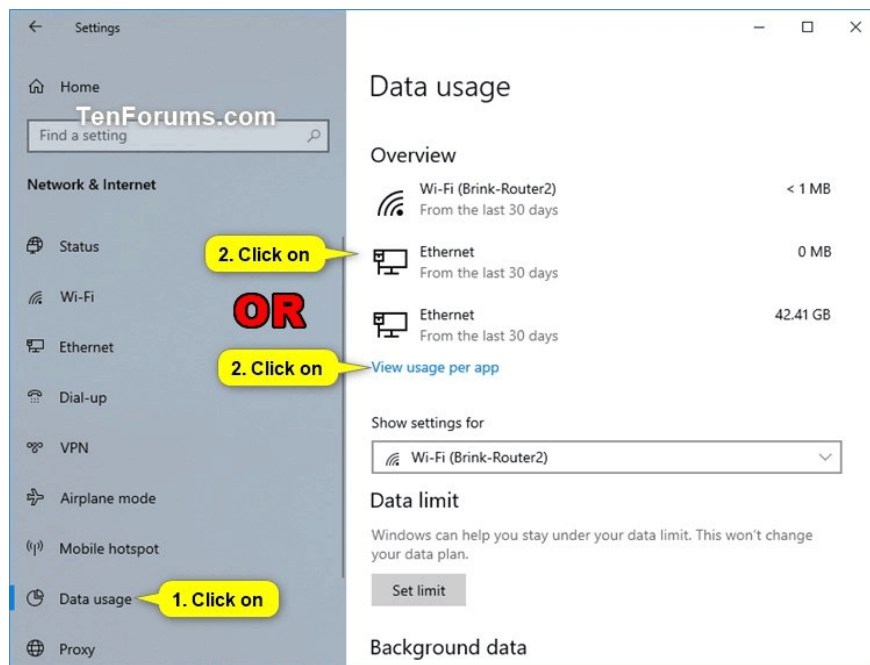
1. 1. Reset the data using the specific network data in Settings
2. 2. Reset all network data usage using BAT file
3. 3. Reset all network data usage in Command Prompt
4. 4. Reset all data using network data manually

### 1. Reset the data using the specific network data in Settings

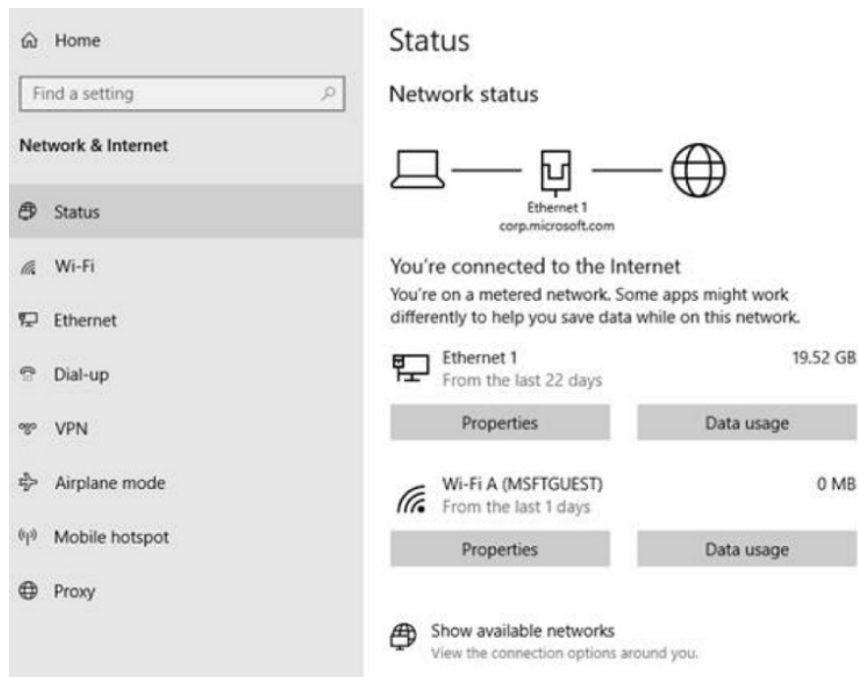
**Note:** This option in **Settings** only starts from Windows 10 build 16199 version.

**Step 1** . Open **Settings** and click the **Network & Internet** icon.

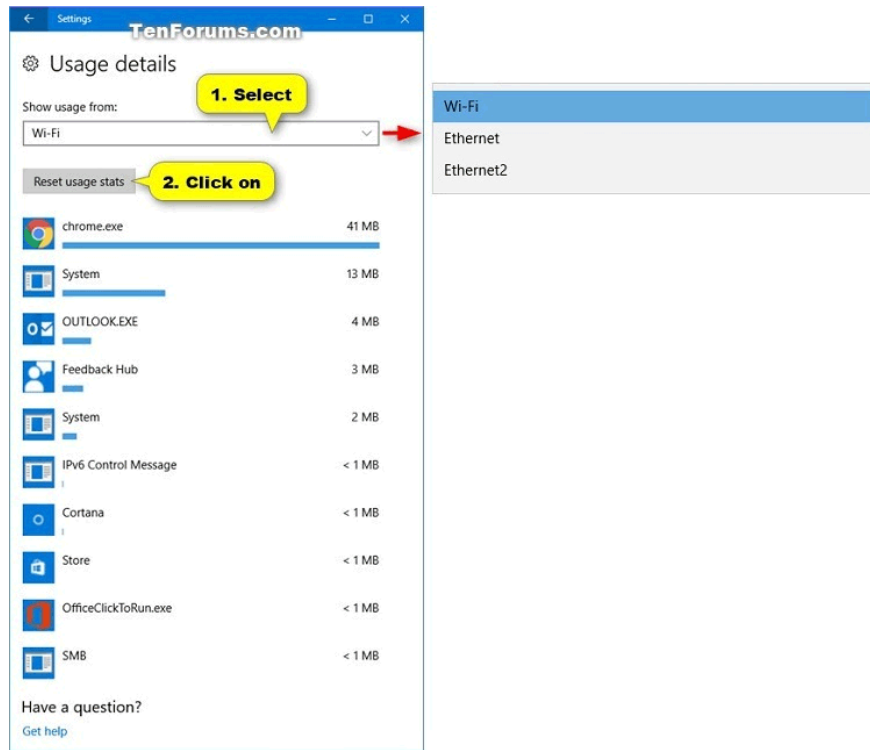
**Step 2** . Click **Data usage** on the left and click on the specific network or **View usage per app link** on the right.



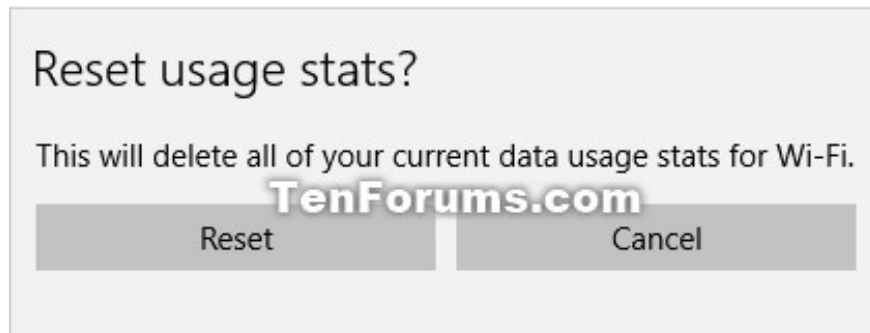
**Note:** Starting with Windows 10 build 18956, you need to click on the **Status** icon on the right and click on the **Data usage** button of the network you selected on the right.



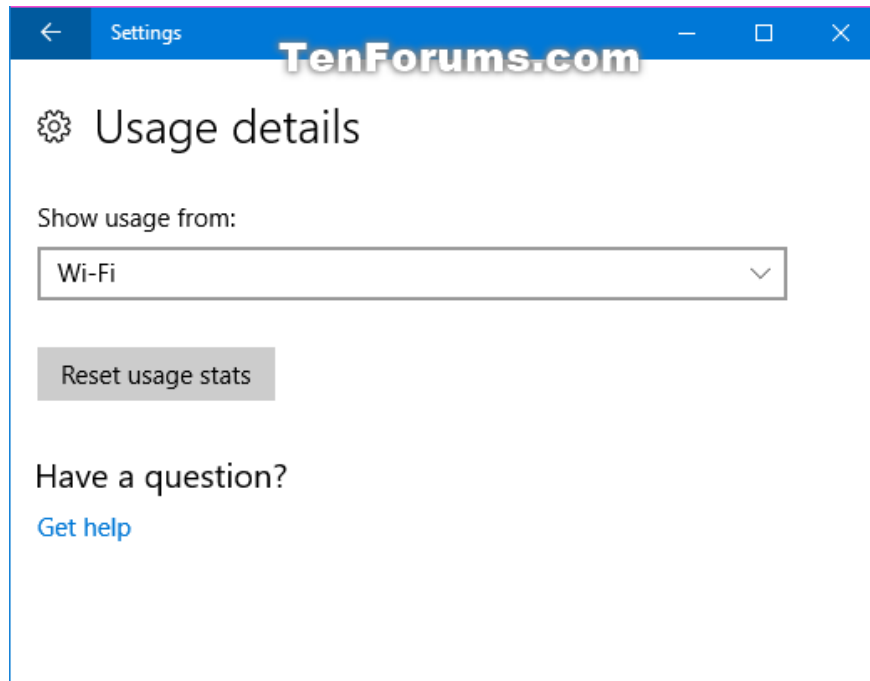
**Step 3 .** Select the network (eg Wifi) you want to reset the data in **Show usage from section** and click on **Reset usage stats** button.



**Step 4.** Click **Reset** to confirm that you want to reset network data usage.



**Step 5.** Data using selected network (here is Wifi) will be reset.



**Step 6.** If you want to reset usage data of another network (wired network), repeat Step 3 above to select it. If not, close **Settings** .

## 2. Reset all network data usage using BAT file

**Step 1** . Download the .bat file according to the link below.

<https://www.tenforums.com/attachments/tutorials/226501d1551900852-reset-network-0>

Below is the content of the .bat file, you can refer.

Code:

```
powershell -windowstyle hidden -command "Start-Process cmd -ArgumentList '/s,/c,netsh intsh reset all'
```

**Step 2** . Save the .bat file to the desktop.

**Step 3.** Unlock the .bat file.

**Step 4.** Run the .bat file.

**Step 5.** When the UAC message appears, click **Yes** to agree to run the file bat. with administrative rights.

**Step 6.** You will see the Command Prompt window quickly open and close to reset data using network data.

### 3. Reset all network data usage in Command Prompt

**Step 1.** Open Command Prompt as administrator.

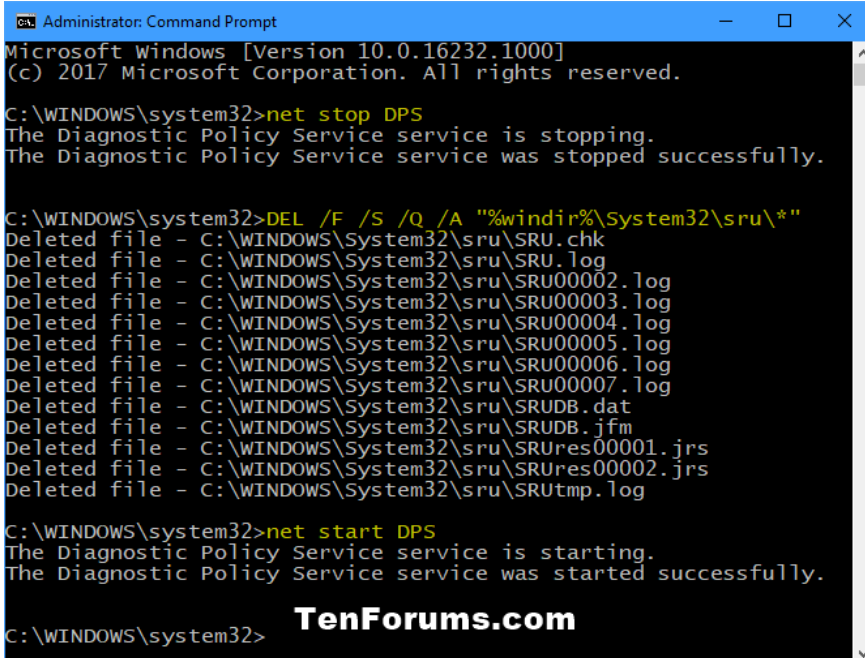
Step 2. Copy and paste the star command into Command Prompt and press **Enter** after each command.

```
net stop DPS
```

```
DEL / F / S / Q / A "% windir% System32sru *"
```

```
net start DPS
```

**Step 3 .** When done, you can close Command Prompt if you want.



```
Administrator: Command Prompt
Microsoft Windows [Version 10.0.16232.1000]
(c) 2017 Microsoft Corporation. All rights reserved.

C:\WINDOWS\system32>net stop DPS
The Diagnostic Policy Service service is stopping.
The Diagnostic Policy Service service was stopped successfully.

C:\WINDOWS\system32>DEL /F /S /Q /A "%windir%\System32\sru\*"
Deleted file - C:\WINDOWS\System32\sru\SRU.chk
Deleted file - C:\WINDOWS\System32\sru\SRU.log
Deleted file - C:\WINDOWS\System32\sru\SRU00002.log
Deleted file - C:\WINDOWS\System32\sru\SRU00003.log
Deleted file - C:\WINDOWS\System32\sru\SRU00004.log
Deleted file - C:\WINDOWS\System32\sru\SRU00005.log
Deleted file - C:\WINDOWS\System32\sru\SRU00006.log
Deleted file - C:\WINDOWS\System32\sru\SRU00007.log
Deleted file - C:\WINDOWS\System32\sru\SRUDB.dat
Deleted file - C:\WINDOWS\System32\sru\SRUDB.jfm
Deleted file - C:\WINDOWS\System32\sru\SRUres00001.jrs
Deleted file - C:\WINDOWS\System32\sru\SRUres00002.jrs
Deleted file - C:\WINDOWS\System32\sru\SRUtmp.log

C:\WINDOWS\system32>net start DPS
The Diagnostic Policy Service service is starting.
The Diagnostic Policy Service service was started successfully.

C:\WINDOWS\system32>
```

**TenForums.com**

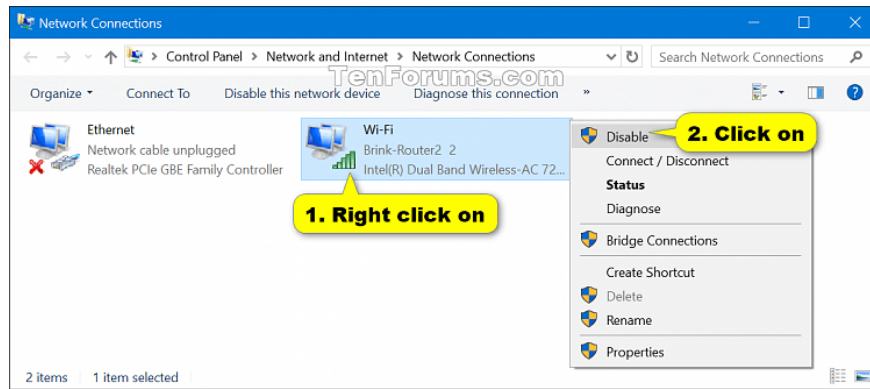
### 4. Reset all data using network data manually

**Step 1 .** Do either of the following actions to remove network activity.

Temporarily disable all active network adapters and close any applications that are accessing the network.

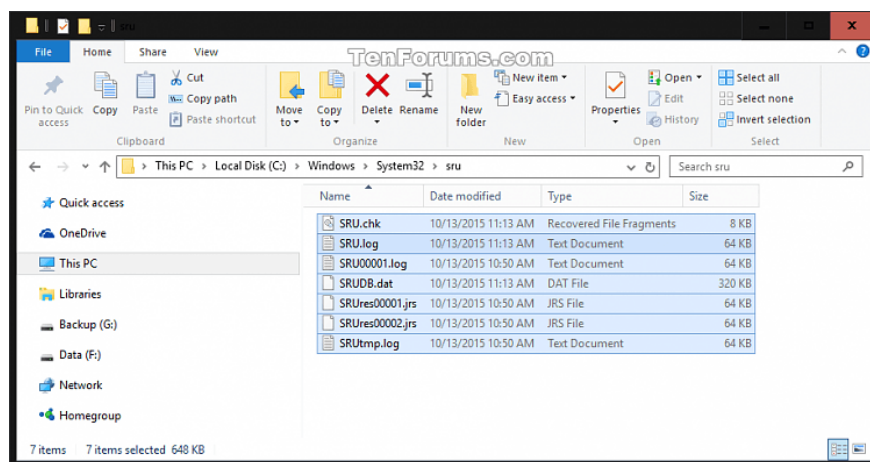
Or

Start Windows 10 in Safe mode without network.



**Step 2.** Open File Explorer, browse to C: WindowsSystem32sru folder and open it.

**Step 3 .** Delete all content in **sru** folder. Be sure not to delete the sru folder.



**Step 4 .** Activate the network adapter or start Windows in normal mode.

So you're done resetting your network usage data on Windows 10.

I wish you all success!

You finished reading the article "**How to reset network data usage on Windows 10**" edited by the [TipsMake](#) team. We hope this article has provided you with many useful tech tips and tricks. You can search for similar articles on tips and guides. Thank you for reading and for following us regularly.