

How to reset Local Group Policy settings on Windows 10

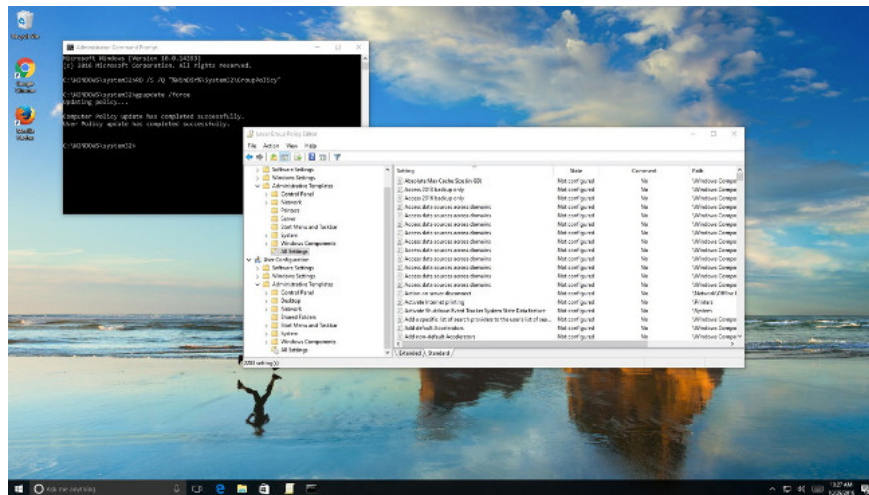
Although on Windows 10 users can find custom options in the Settings and Control Panel applications. But when you have to make changes to the higher options, users can use Local Group Policy Editor. Local Group Policy Editor (gpedit.msc) is an important part of the operating system, integrated for a long time to configure settings across the entire computer or user accounts.

Although on **Windows 10** users can find custom options in the Settings and Control Panel applications. But when you have to make changes to the higher options, users can use Local Group Policy Editor.

Local Group Policy Editor (gpedit.msc) is an important part of the operating system, integrated for a long time to configure settings across the entire computer or user accounts.

However, in some cases when the policy change fails, activating or disabling too many policies or configuring a specific policy may cause many unexpected problems on your computer. In this case you can reset **Group Policy objects** (GPOs) to their initial default settings, which may fix the problem.

In the following article, Network Administrator will show you two ways to reset Group Policy objects (GPOs) on Windows 10 computers.



How to reset Local Group Policy settings?

With Local Group Policy Editor you can configure a variety of personal, system, network settings, etc. In total, there are more than 2000 settings you can customize through Local Group Policy Editor.

There are 2 ways to reset Local Group Policy Editor to the initial default setting status.

Important note:

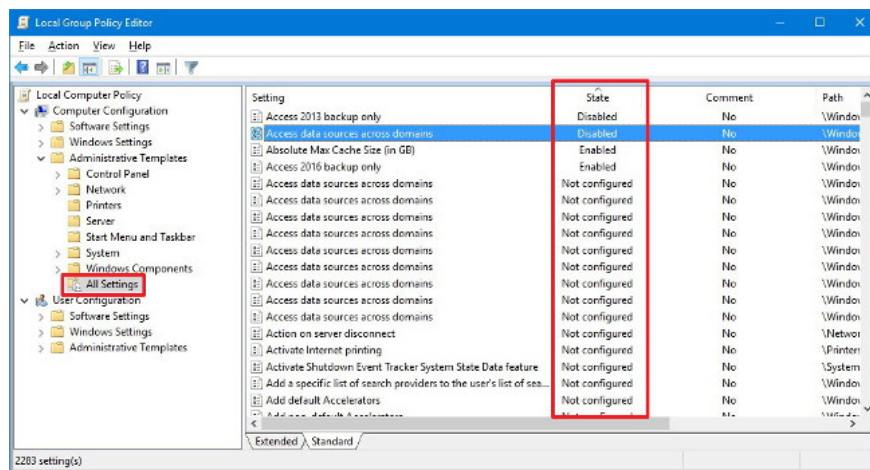
During the execution, an error may occur, so you should back up the system before performing or you can create a system restore point.

1. Reset all Group Policy using Local Group Policy Editor

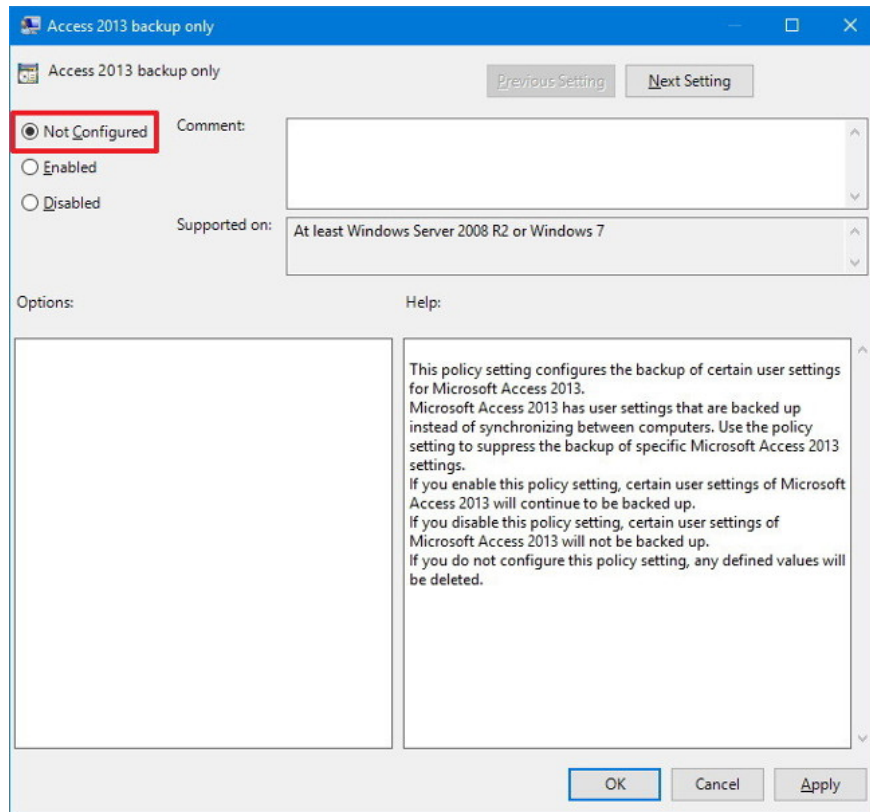
1. Press the **Windows + R** key combination to open the Run command window.
2. On the Run command window, enter **gpedit.msc** and press Enter or click **OK** to open the Local Group Policy Editor window.
3. In the Local Group Policy Editor window, navigate to the key:

Local Computer Policy> Computer Configuration> Administrative Templates> All Settings

4. In the right pane, in the **State** section you can see the values ??set to **Enabled** and **Disabled** .

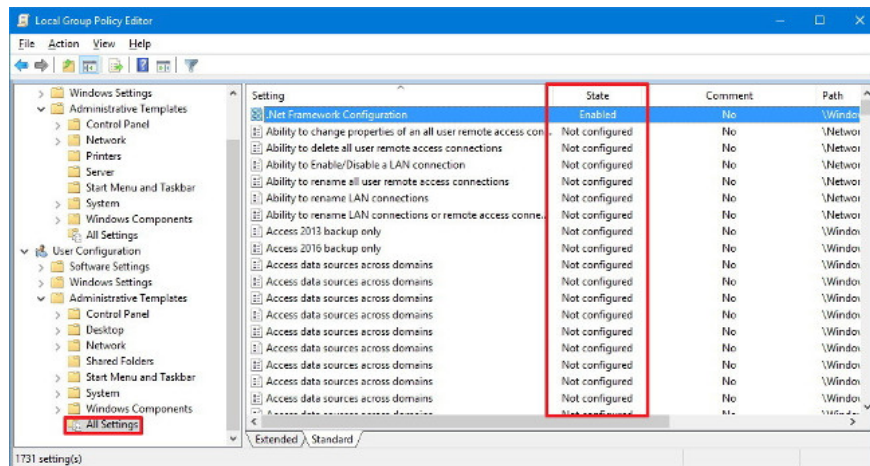


5. Double-click each Policy that is activated as **Enabled** or **Disabled** and change the value to **Not configured** .
6. Click **OK** and follow the same steps for each policy.



If you want to change the settings at User Configuration, you must follow the same steps as above, but to open All Settings you must access the following link:

Local Computer Policy> User Configuration> Administrative Templates> All Settings



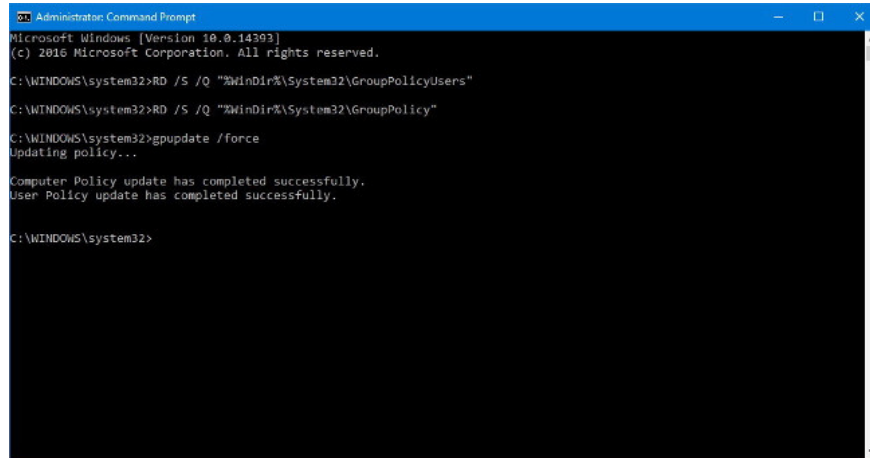
2. Use Command Prompt

1. Press **Windows + X** key combination to open **Power User Menu** , here you click **Command Prompt (admin)** to open Command Prompt window.

2. On the Command Prompt window, enter each of the commands below and press Enter:

```
RD / S / Q "% WinDir% System32GroupPolicyUsers"
```

```
RD / S / Q "% WinDir% System32GroupPolicy"
```



```
Administrator: Command Prompt
Microsoft Windows [Version 10.0.14393]
(c) 2016 Microsoft Corporation. All rights reserved.

C:\WINDOWS\system32>RD /S /Q "%WinDir%\System32\GroupPolicyUsers"
C:\WINDOWS\system32>RD /S /Q "%WinDir%\System32\GroupPolicy"
C:\WINDOWS\system32>gpupdate /force
Updating policy...

Computer Policy update has completed successfully.
User Policy update has completed successfully.

C:\WINDOWS\system32>
```

3. Use the command below to restart your computer and complete the process:

```
gpupdate / force
```

The above commands will delete the archive folder set up **Group Policy** on your computer and Windows 10 will apply the initial default settings.

Note that the above steps to reset Local settings. That means you cannot use the above steps for a computer connected to a **domain** (domain) using **Active Directory** .

If you use **Windows 10** Home, you cannot access Local Group Policy Editor because Local Group Policy Editor is only available on Windows 10 Pro, Enterprise and Education.

Refer to some of the following articles:

1. Why is it disabled but Cortana still runs in the background?
1. Instructions to disable Cortana on Windows 10 Anniversary Update
1. How to use Cortana to turn off or restart Windows 10?

Good luck!

You finished reading the article "**How to reset Local Group Policy settings on Windows 10**" edited by the [TipsMake](#) team. We hope this article has provided you with many useful tech tips and tricks. You can search for similar articles on tips and guides. Thank you for reading and for following us regularly.