

How to remotely lock iPhone and iPad when the device is lost or stolen

iPhone users must definitely know this trick, which is how to remotely lock iPhone when lost. The trick to remotely lock your iPhone when lost helps protect your phone, making it impossible for thieves to use your phone.

iPhone users often set up passwords to protect their devices. But sometimes the password is forgotten because the numbers are hard to remember. However, you can still retrieve your iPhone password using iTunes. You just need to use your iTunes account to easily **retrieve your iPhone password** with iTunes. But how to retrieve iPhone password also makes your phone easier to unlock. If you lose your iPhone, lock it remotely with the following tips to prevent thieves from using your phone.

Lock iPhone remotely when lost

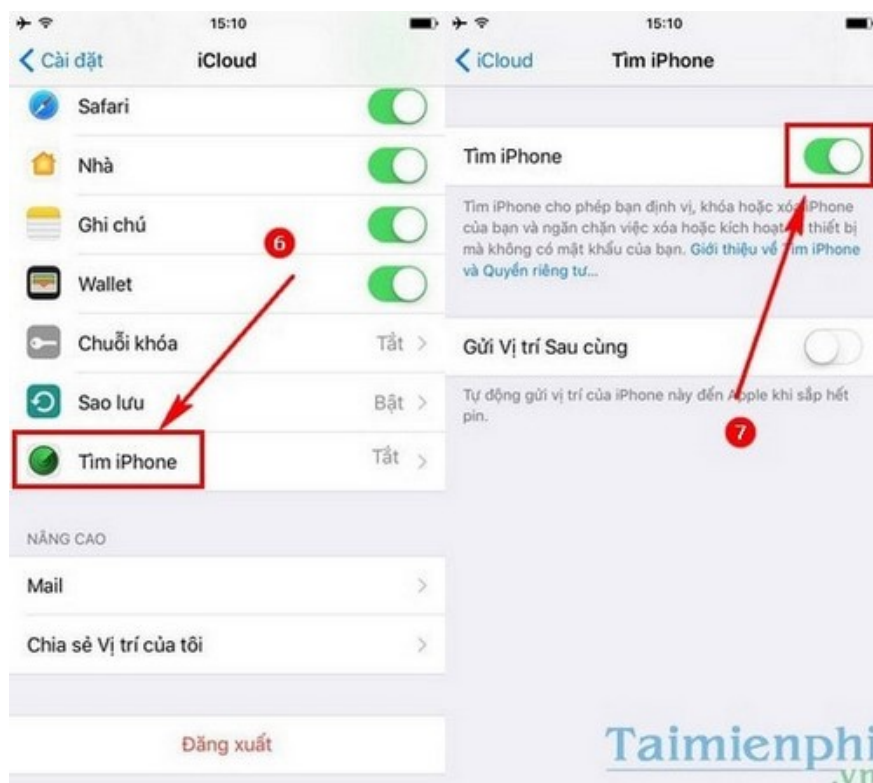
Step 1: Go to **Settings > Touch ID & Passcode > Turn on passcode.**



Step 2: Enter the password twice.

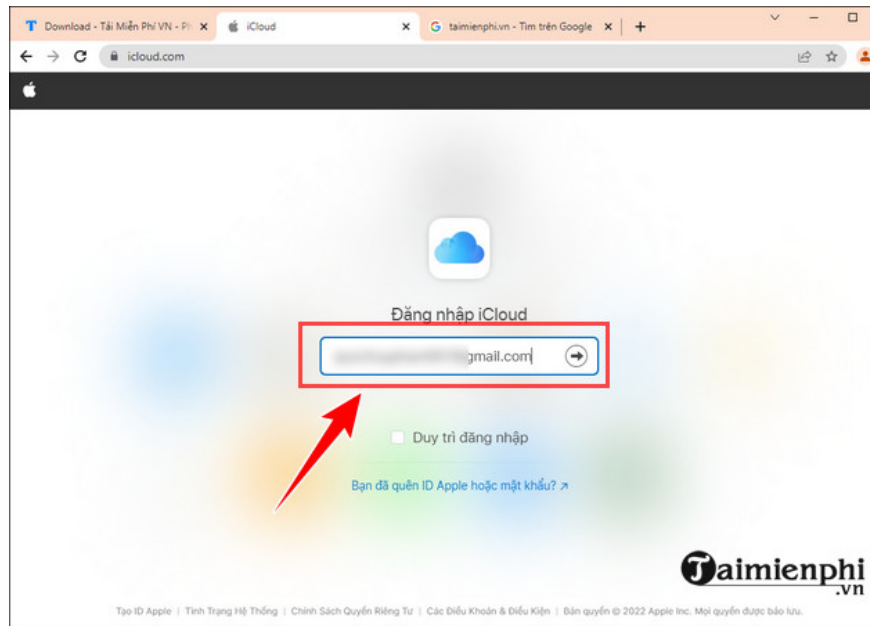


Step 3: Go back to **Settings** , navigate to **iCloud** , select **Find iPhone** and turn **ON** for this mode.

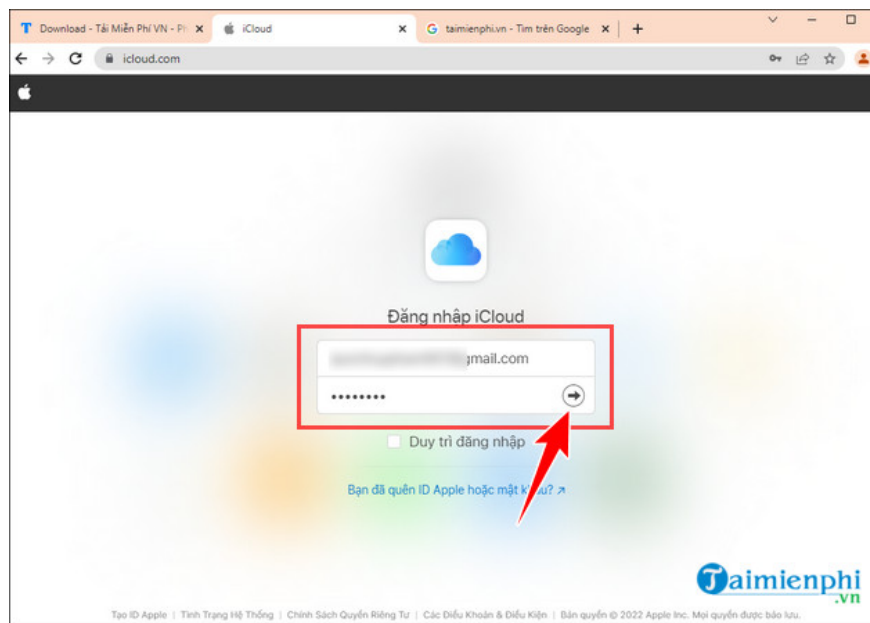


When your iPhone is lost. Access **HERE** now

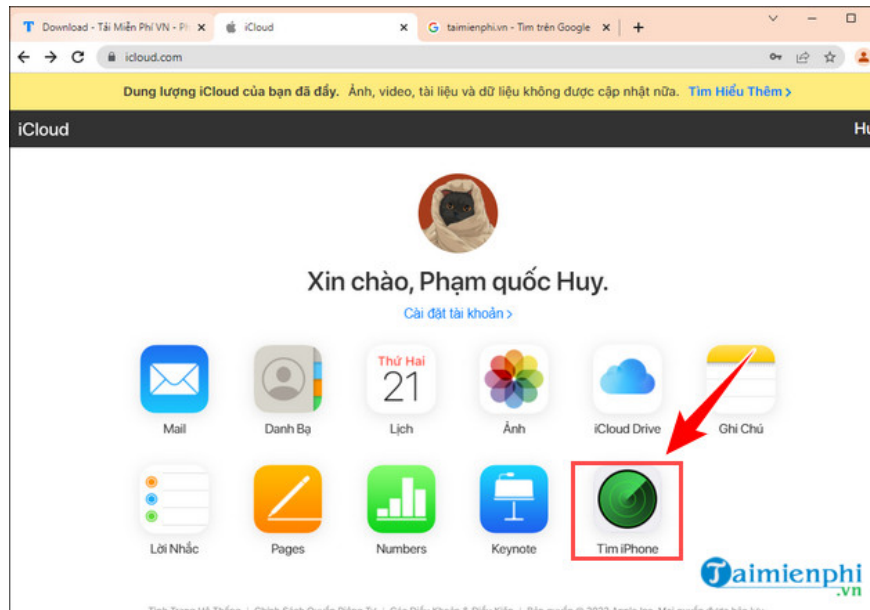
Step 1: Enter your **iCloud** account and select the arrow.



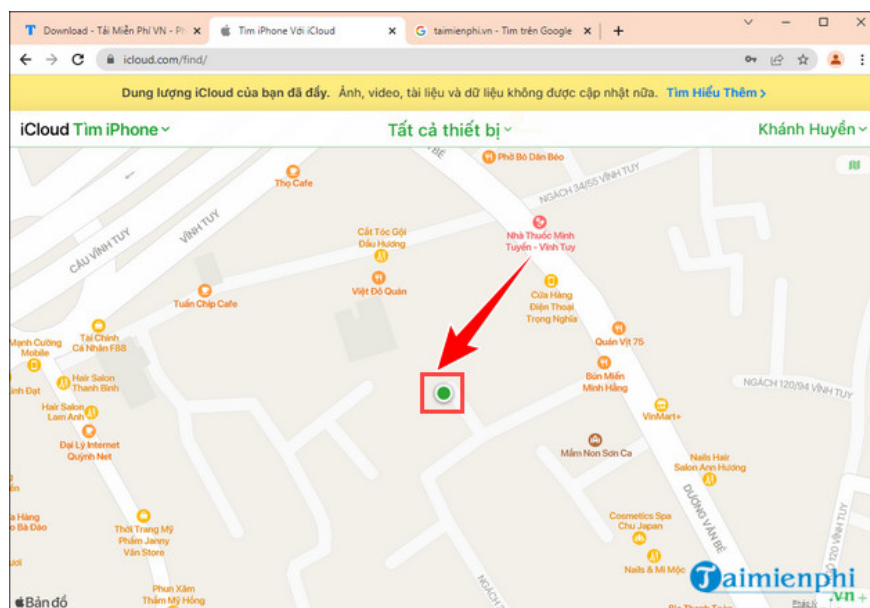
Step 2: Enter your iPhone password and select the arrow.



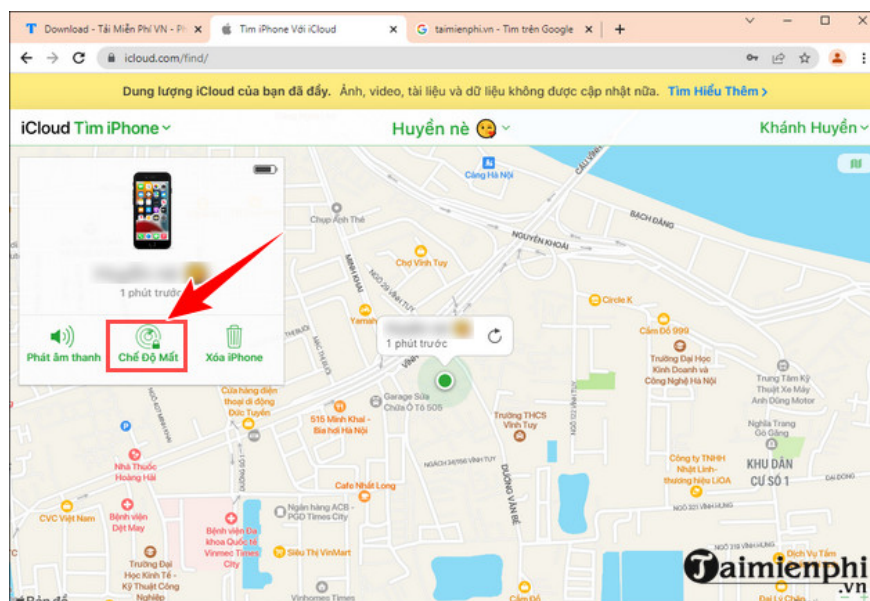
Step 3: Select **Find iPhone**.



You will immediately see **the phone's location** . You can use this method to report to the Police and help find the phone thief.



Click and select **Lost Mode** to remotely lock iPhone.



Above are the tricks to remotely lock your iPhone when lost that every iPhone user needs to know.

Samsung users also have the ability to find lost Samsung phones with Find my Mobile. This feature is similar to Find my iPhone on iOS. See more ways **to find a lost Samsung phone** with Find My Mobile. Who knows, maybe one day you'll need to use this feature.

In addition, if you want to know more information about your iPhone, you can check your iPhone imei yourself to see if your phone is international or locked. there are many ways **to check imei iPhone** for which you can refer to the instructions on TipsMake

Using iPhone for a long time to play games, charge it overnight, unplug it when it's not full. leads to iPhone battery drain. You should check your iPhone battery regularly for more reasonable usage. If, when **checking the iPhone battery** , the level is over 40%, you should consider replacing the iPhone battery with a new one. Because low battery capacity can easily lead to the risk of overheating and damaging your device.

You finished reading the article "**How to remotely lock iPhone and iPad when the device is lost or stolen**" edited by the [TipsMake](#) team. We hope this article has provided you with many useful tech tips and tricks. You can search for similar articles on tips and guides. Thank you for reading and for following us regularly.