

How to Recover Deleted Contacts on Android

Deleted contacts on Android phones will be moved to the Google Contacts trash folder, from there you can restore deleted contacts according to the instructions below.

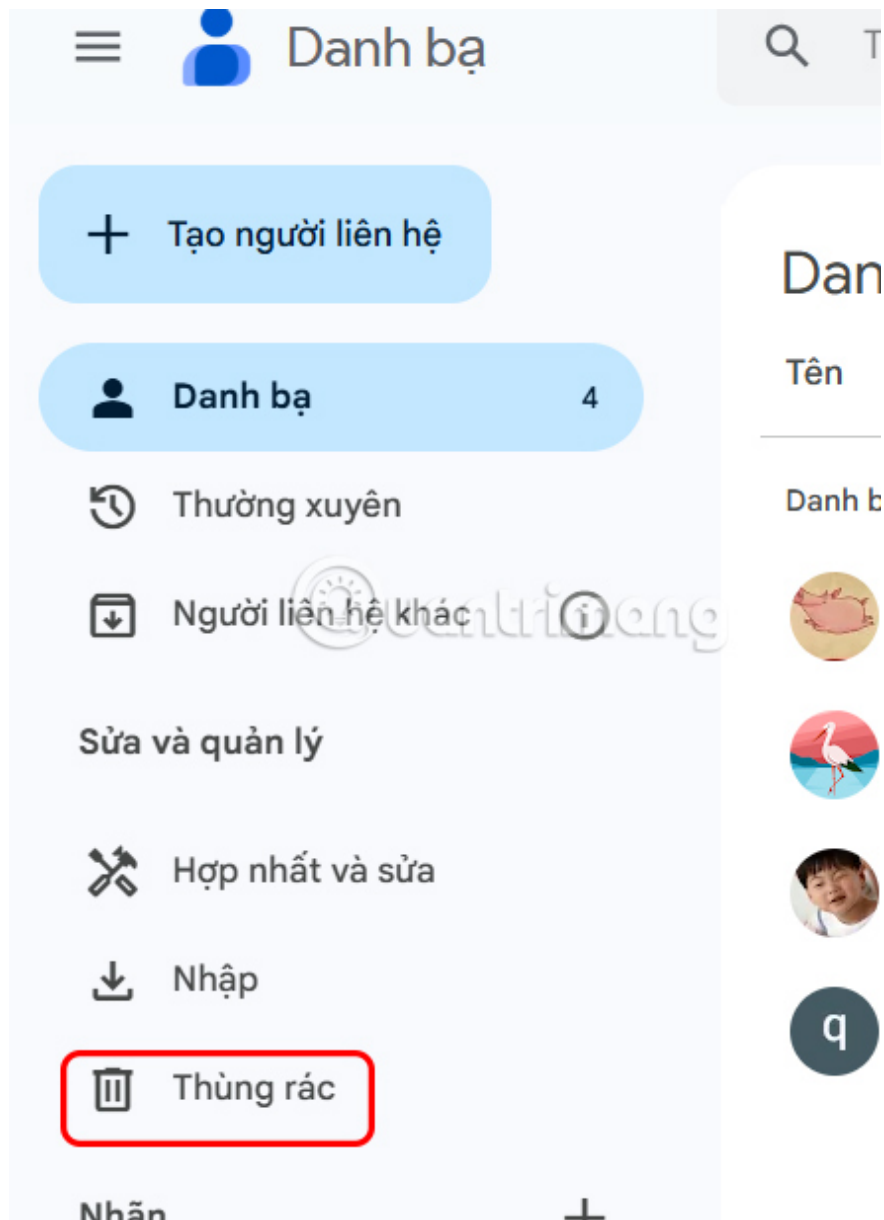
When setting up an Android phone, the device is signed in to a Google account by default to sync contacts with this account. Deleted contacts will be moved to the Google Contacts trash folder, from which you can restore deleted contacts according to the instructions below.

How to restore contacts on Android

Step 1:

Go to your **Google Contacts** on your computer or phone and access the Google account you're using on your phone. If you're on your phone, open the Contacts app.

In the Google contacts interface, click on **Trash** to view deleted phone numbers on your Android phone.



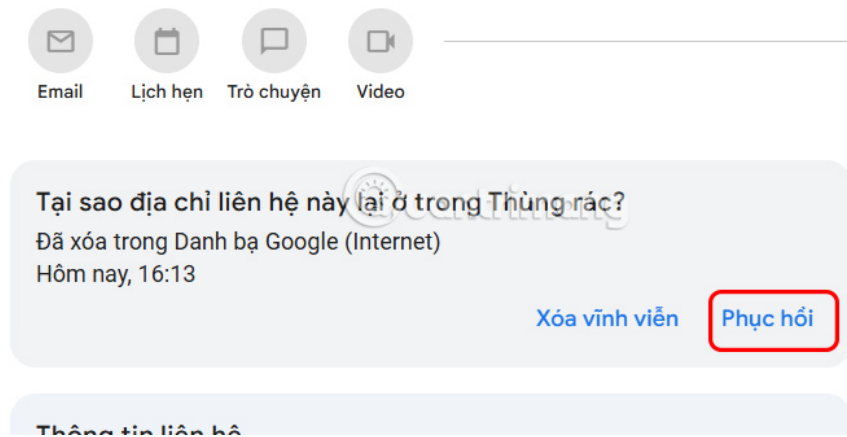
Step 2:

At this time, the user will see the deleted contacts on Android, **click on the contact you want to restore** to the Android phone.



Step 3:

In the deleted contact information interface, you just need to **click Restore** to restore deleted contacts on Android.



Contacts will be permanently deleted from the trash after 30 days. Also, if your phone hasn't backed up your contacts, deleted items won't show up here.

How to retrieve deleted numbers on Samsung phones

Recovering deleted contacts on Samsung phones is easier thanks to the recycle bin that stores this information. You have 30 days to recover deleted phone numbers before they are completely deleted.

Step 1:

Go to **Settings > Battery and device care > Storage** .

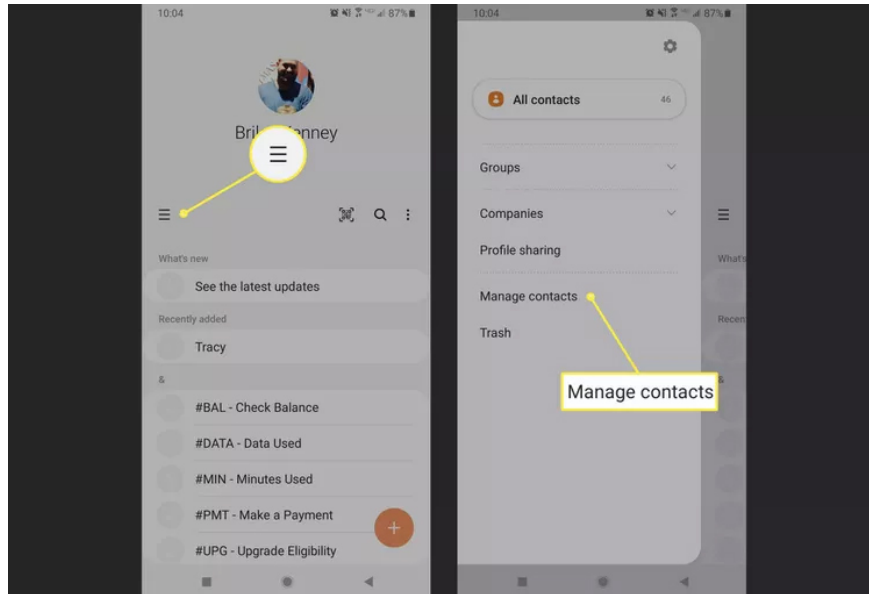
Step 2:

In the application interface, **click Recycle bin** , then select **Contacts** . Then **click on the contact** from the list and **select Restore** .

Step 3

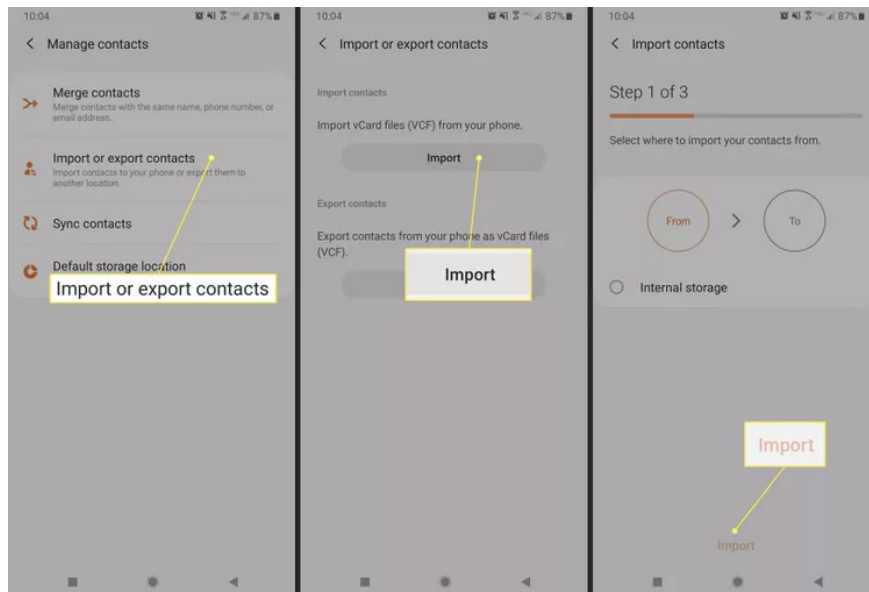
Your phone may save contacts to its internal memory or to your SIM card. Deleted contacts may still be in your backup, so you can import them again.

Tap **Contacts > Menu > Manage Contacts**.



Then select **Import or export contacts** and then **click on Import** . If there are any contacts saved on the SIM card or internal memory, they will be displayed in this interface.

Select the source to import contacts from, then tap Import.



You finished reading the article "**How to Recover Deleted Contacts on Android**" edited by the [TipsMake](#) team. We hope this article has provided you with many useful tech tips and tricks. You can search for similar articles on tips and guides. Thank you for reading and for following us regularly.