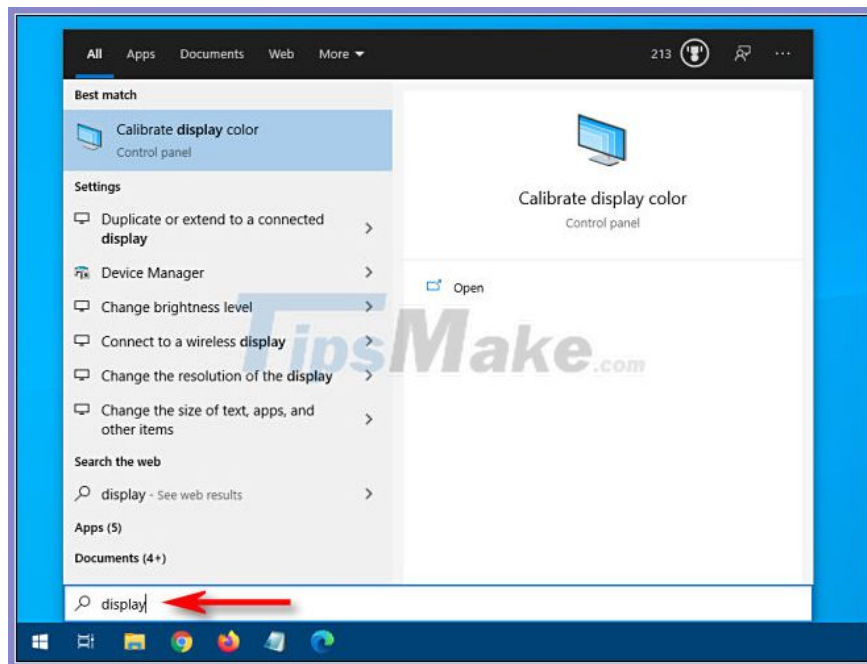


# How to quickly find specific system settings on Windows 10

Are you looking for a specific system setting on Windows 10 but don't know where it is located? There are a few quick ways to find the exact setting you need to change. Here's how to do it!

## Search using the Start menu

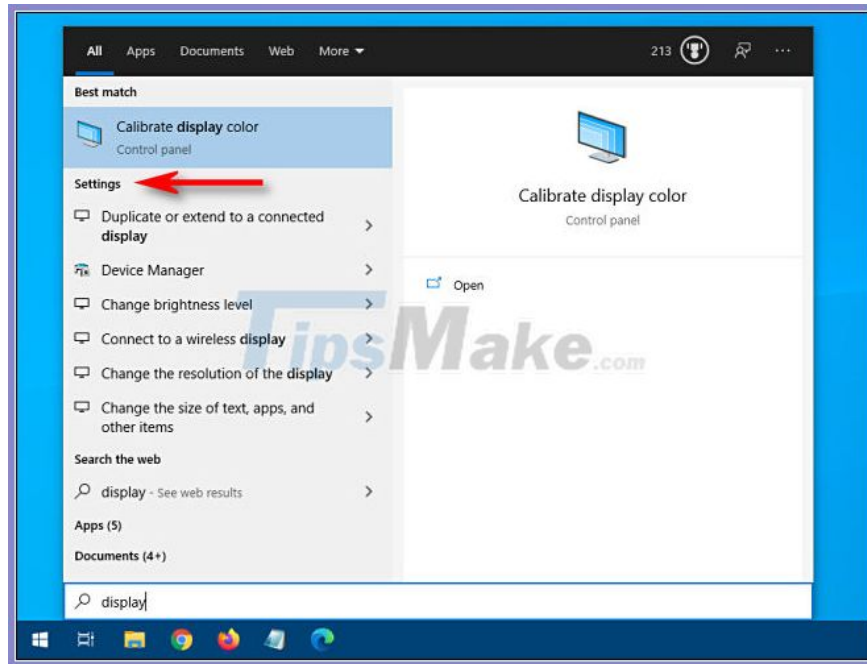
To search for system settings using the Start menu, open the Start menu and type a word or two describing what you want to find. For example, you can type 'keyboard' for keyboard settings or 'display' for display related settings.



Enter a word or two describing what you want to find

A list of results will appear in the left half of the Start menu. From there, click on the result that best matches what you're looking for and you'll be taken to the right configuration application.

If you don't see what you need and want more search results, click the "Settings" heading to see the detailed list.

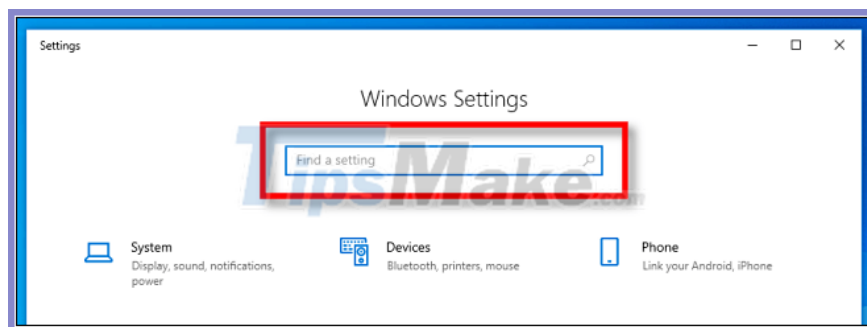


After you click on an item in the list, the appropriate installation application will appear and you can begin your configuration operations.

## Search in the Settings app

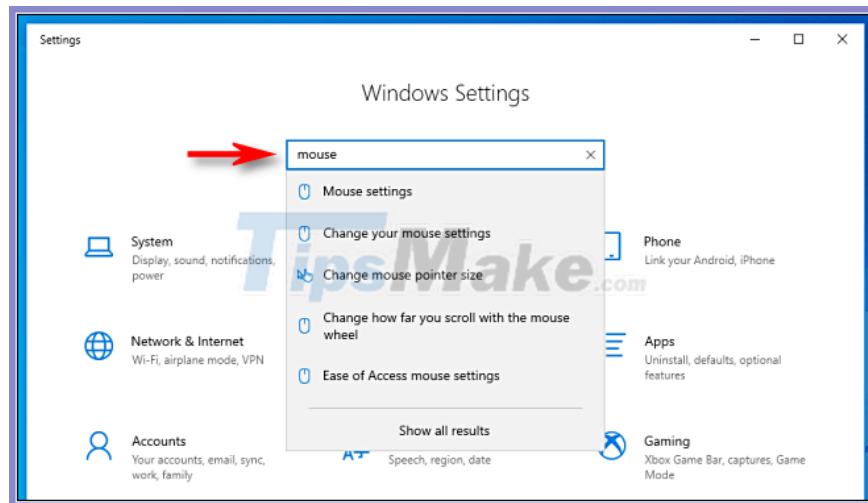
You can also search for a specific setting directly in the Windows Settings app. First, open Settings by opening the Start menu and clicking on the gear icon on the left. You can also press **Windows + I** to quickly open the **Settings** window from anywhere in Windows 10.

When the window opens, look for the search box near the top that says '**Find A Setting**'.



Click in the search box and enter what you are looking for (eg '**mouse**', '**network**' or '**Bluetooth**'). The results will appear just below the box in the pop-up menu.

If you want more results, click '**Show All Results**' at the bottom of the list.

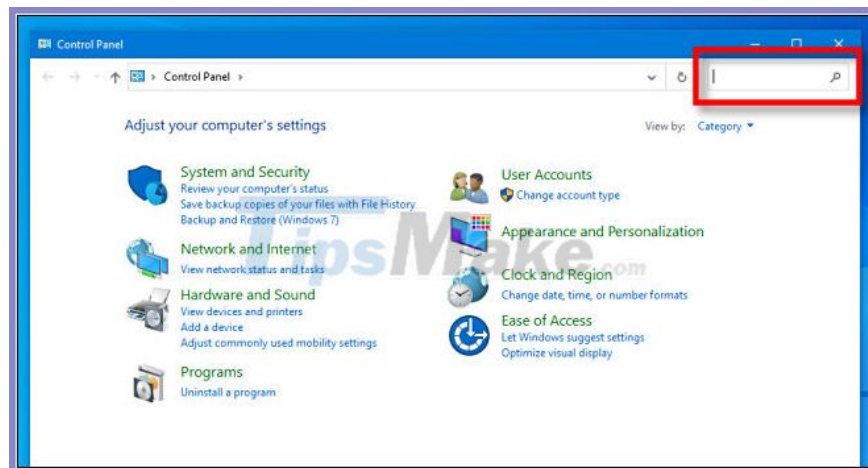


When you find the result you're looking for, click on it and you'll be taken to the appropriate Settings page.

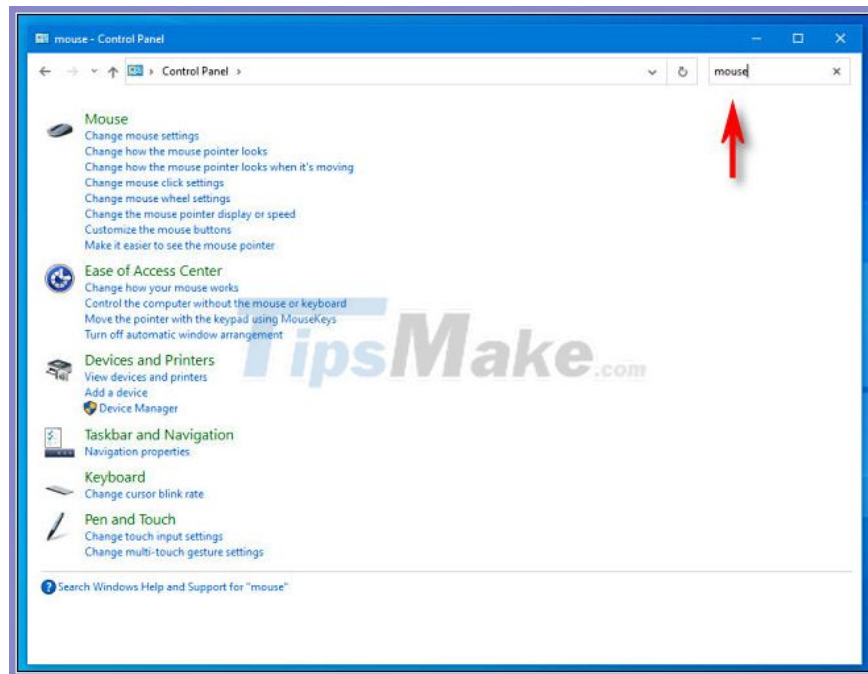
## Search in Control Panel

If you can't find what you need in Settings, you can also search the Control Panel app. First, open the Start menu and type '**control panel**', then press **Enter** to open the Control Panel.

When Control Panel appears, find the search bar in the upper right corner of the window.



Click in the search box and enter a word that describes what you want to find. The results will appear in the window below.



Click on a result and a new window will appear containing the settings you are looking for. After you make changes, remember to click **Apply** or **OK** button . The settings will be saved and the window will close.

Hope you are succesful.

You finished reading the article "**How to quickly find specific system settings on Windows 10**" edited by the [TipsMake](#) team. We hope this article has provided you with many useful tech tips and tricks. You can search for similar articles on tips and guides. Thank you for reading and for following us regularly.