

How to quickly enter Safe Mode on Windows 7/8/10

Safe Mode is a mode that allows Windows to start with minimal components, helping to fix system errors. You can access it in several ways, such as using the F8 key on Windows 7 and Startup Settings on Windows 8 and 10.

Safe Mode helps users fix Windows errors by booting the system with the most basic components. There are several ways to access it on Windows 7, 8, and 10, depending on the operating system version.

For Windows 7

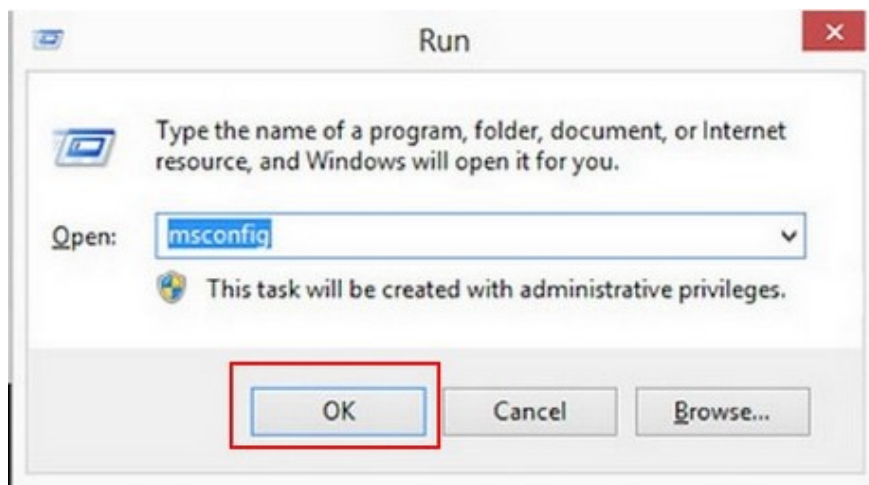
During startup, press the *F8* key . For Windows 7 and earlier versions, you can enter **Safe Mode** this way.

If Method 1 doesn't work , move on to Method 2 :

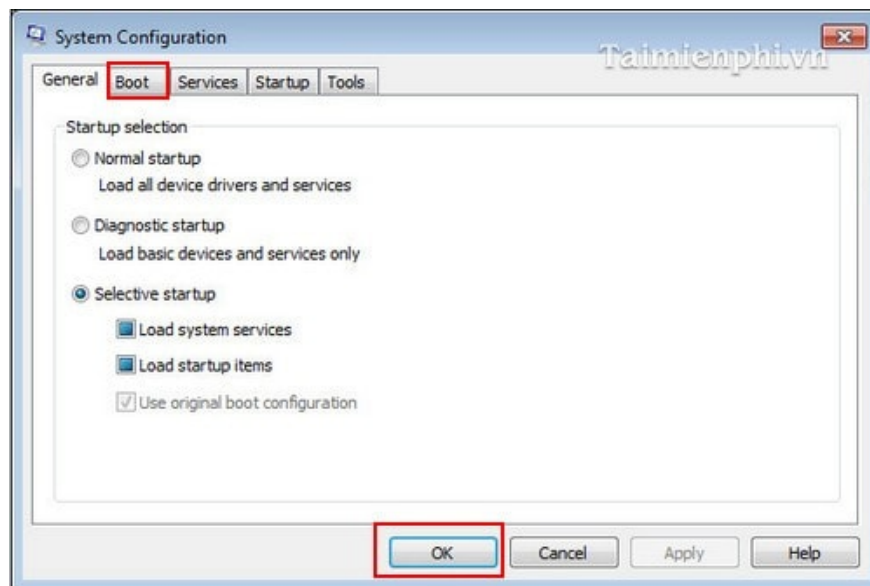
To get your computer to boot into Windows normally, follow these steps:

Step 1: Use **the Windows + R** key combination to open the **Run dialog box**.

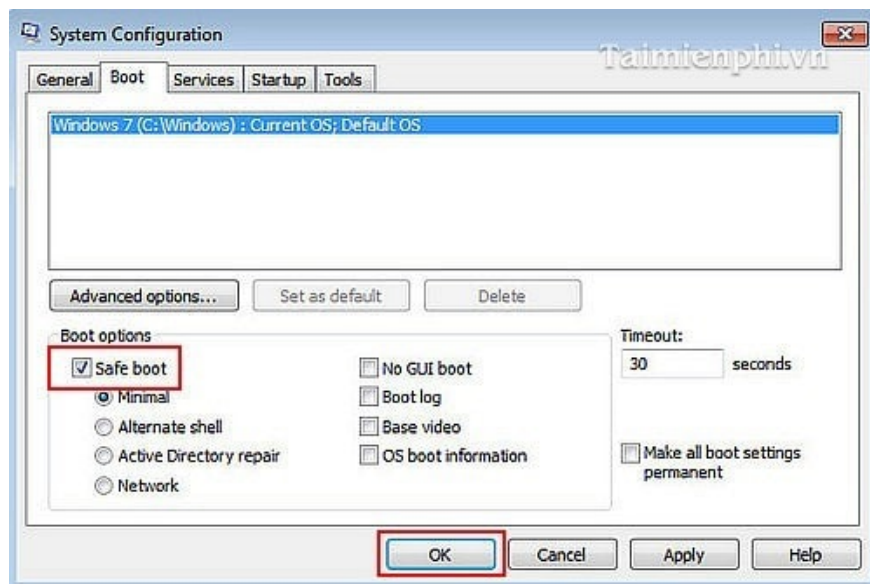
Step 2: Then type "**msconfig**" and press **Enter**.



The System Configuration window appears; select **Boot** , then click **OK**.



Select **Safe Mode**



Click **OK**, then restart your computer.

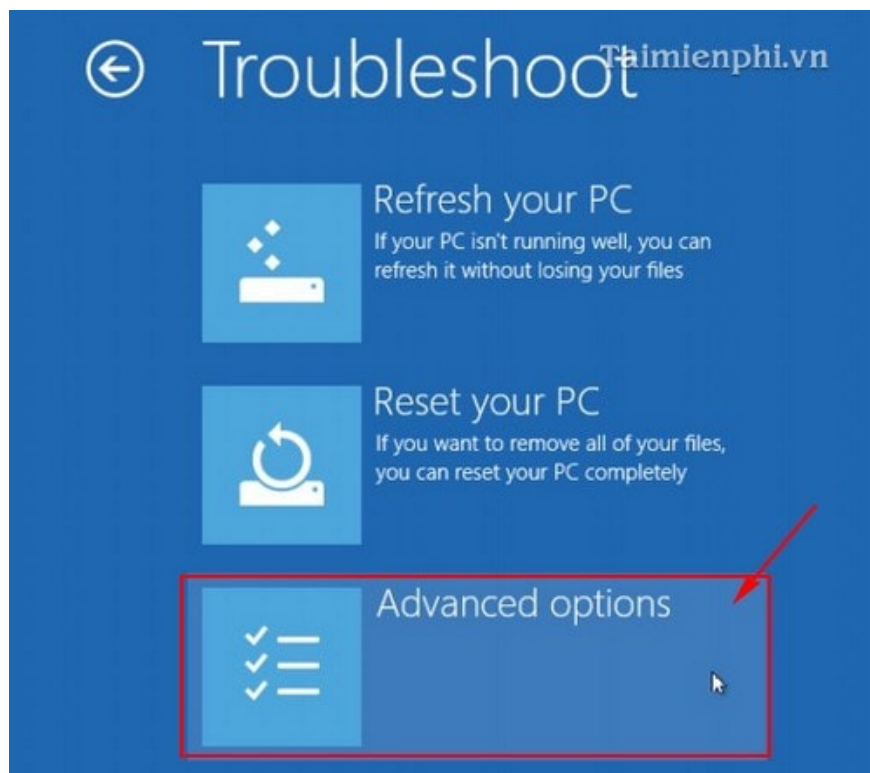
For Windows 8/10

Step 1: Press the **Windows + I** key combination to open **Settings** . Click the **Power** button , hold **Shift** while clicking the **Restart** button.

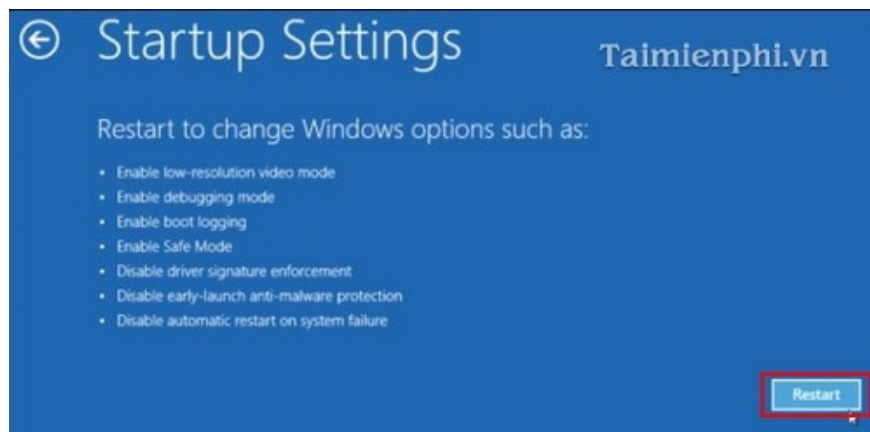
Step 2: The " **Choose an option**" screen will now appear. Click on "**Troubleshoot**".



Select **Advanced options on the Troubleshoot** screen .



Select **Startup Settings**



In normal mode, select **F4** . For **Safe Mode with Networking** , press **F5** . For **Safe Mode with Command Prompt** , which allows you to run programs and call the **cmd.exe** file to operate in a **DOS** interface environment, press **F6**.

Windows will then boot into **Safe Mode** , similar to previous versions of Windows. To exit, simply restart your computer.

For Windows XP

Step 1: Restart your computer.

Step 2: Quickly or repeatedly press **the F8 key** , then select Safe Mode.

Safe Mode on Windows 7/8/10 helps fix system errors and protect your computer from malware. In this mode, Windows only loads essential components, making it easier to uninstall faulty applications or check for conflicting drivers. If you experience startup problems, you can use Safe Mode with Networking to download drivers or update the system online. Once complete, simply restart your computer to exit this mode.

You finished reading the article "**How to quickly enter Safe Mode on Windows 7/8/10**" edited by the [TipsMake](#) team. We hope this article has provided you with many useful tech tips and tricks. You can search for similar articles on tips and guides. Thank you for reading and for following us regularly.