

How to quickly check the laptop screen for any damaged pixels?

When you use a laptop for a long time, the pixels made up of countless light bulbs will be damaged, this situation is caused by many reasons.

Here, I will show you how to know if your screen has damaged pixels and where it is damaged.

1. Check what type of computer screen you have

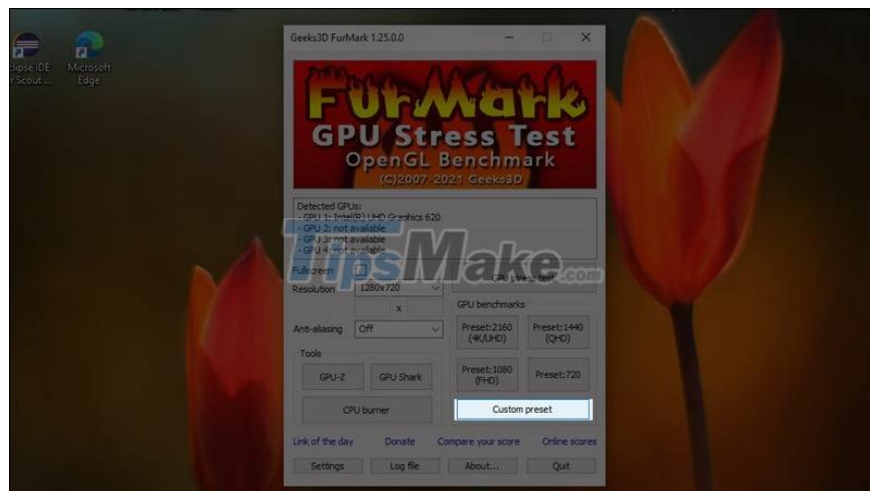
To check this detail, please download a third-party application to conduct the check.

1. [Download Furmark software here.](#)

Step 1: After accessing the website, click **DOWNLOAD** to download and install.



Step 2: After booting, select **Custom Preset**.



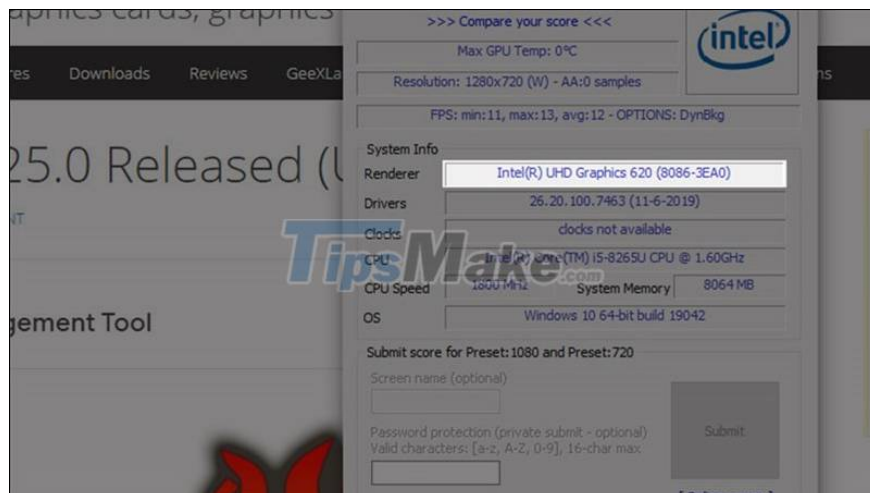
Step 3: Then you choose **GO** to conduct the test.



Step 4: Wait for a few minutes until the data download is 100% complete.



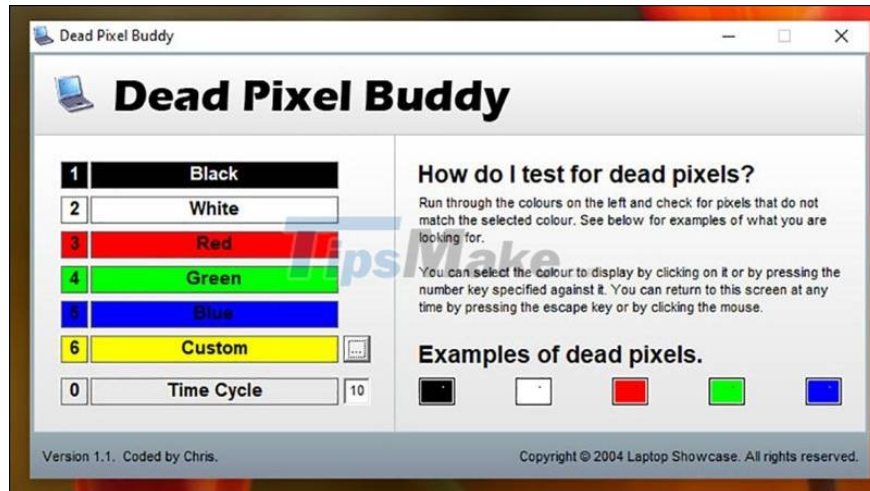
Step 5: Check the screen parameters and screen type at the display below.



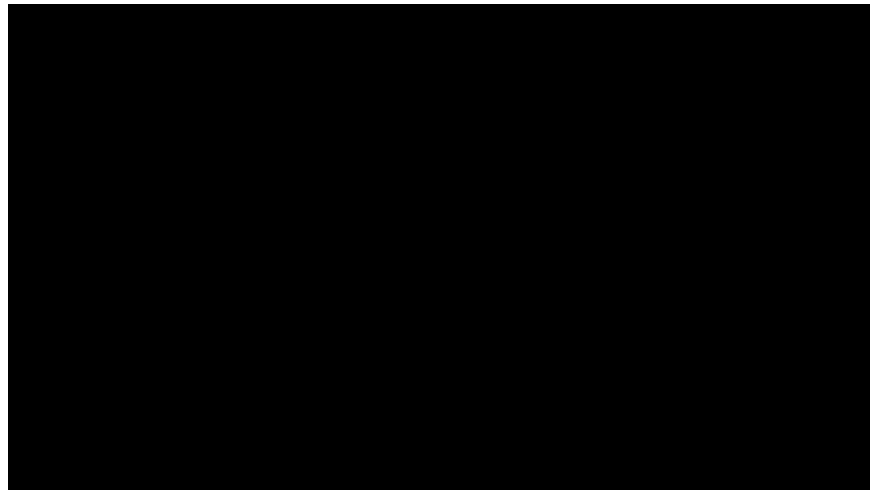
2. Check your screen for damaged pixels

Step 1: Download the [Dead Pixel Buddy test software here](#) and install the application as above.

Step 2: After the installation is complete, a color range will appear to test the performance of pixels, choose the colors in turn to see which pixel is damaged on your device.



Step 3: Based on the signs of dead pixels at **Examples of dead pixels**, if the test screen shows black with a white dot at any position, it means that you have damaged black pixels at this position. That is, the same is the white is the black dot. And if there is no dot like below, you can rest assured.



Good luck.

You finished reading the article "**How to quickly check the laptop screen for any damaged pixels?**" edited by the [TipsMake](#) team. We hope this article has provided you with many useful tech tips and tricks. You can search for similar articles on tips and guides. Thank you for reading and for following us regularly.