

# How to quickly and easily create a permanent password on Ultraviewer.

Creating a permanent password on UltraViewer allows users to easily access remote computers without having to re-enter information, ask for ID and password each time. It's a convenient solution for those who frequently work remotely or provide customer support.

Without a fixed password, the password changes randomly each time the Ultraviewer remote computer control software is opened. While this ensures security, it can be inconvenient for frequent users.

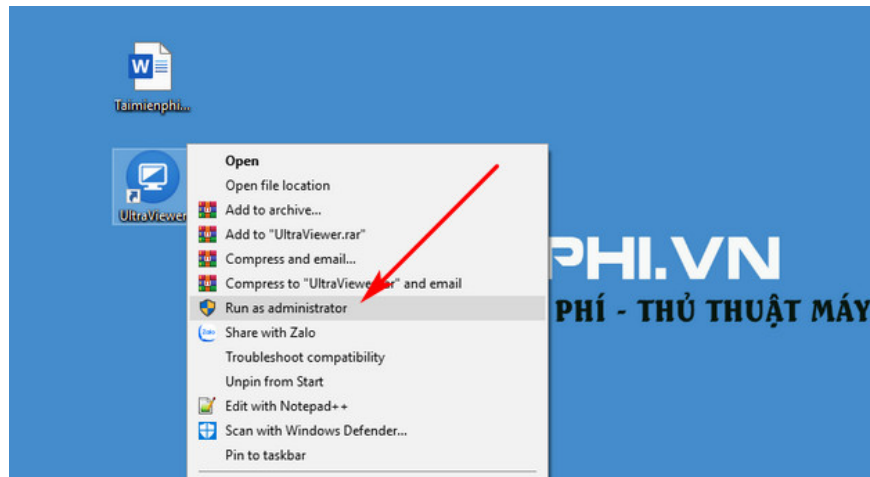
## Instructions on creating a permanent password on Ultraviewer

**Step 1:** Download and install the latest version of **Ultraviewer**

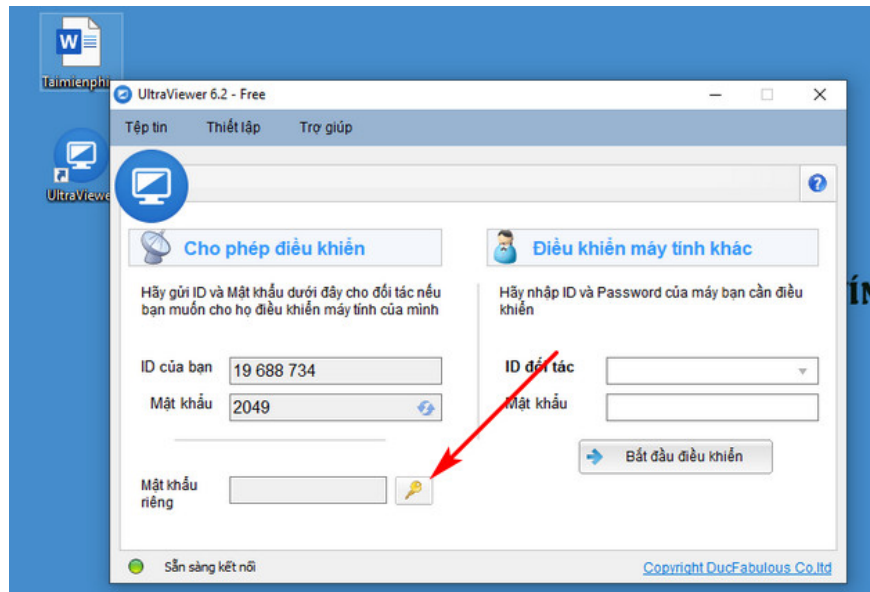
- The new version fixes bugs and includes improvements and upgrades for better usability.

**Step 2:** On the Desktop, right-click on **Ultraviewer** > **Run as administrator**

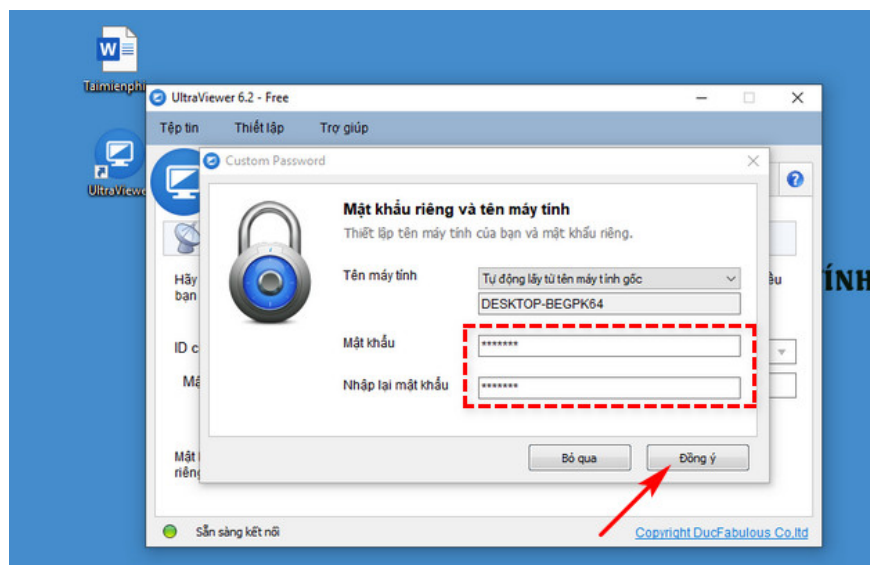
. The operating system will then ask for confirmation; click **Yes** to agree.



**Step 3:** In the Ultraview workspace window, click **the key icon** in the **Private Password** section ;



**Step 4:** A new window will appear. Simply enter the password you want to set permanently on Ultraviewer in the **Password** field and the **Re-enter password** field (note that the passwords in both fields must be the same).  
- Finally, click **OK** to save the settings.



After completing these three steps, you have successfully created **a permanent password on Ultraviewer** . You can now provide it to other users so they can quickly access your computer. If users wish to change the permanent password, they can repeat the steps as instructed by Taimienphi.

## How do I change my permanent password on Ultraviewer?

**Step 1:** Launch the **Ultraviewer** application on your computer.

**Step 2:** Click **the key icon** in the corner of the Ultraviewer main interface, then select **the password reset method** :

**Step 3:** You will have two options:

- **Automatically change password** : Click the double-arrow icon and select Create new password.
- **Set your own password** : Click the double-arrow icon and select Password length to set your desired password.

**Step 4:** Enter your new password

- If you chose to set your own password, **enter your new password** in the required field and **confirm it** in the next field, select **Save** changes and press **OK** to complete the password change
- A confirmation message will appear, press **Yes** to agree.

After changing it, double-check by trying to connect to the remote computer to ensure the new password has been successfully applied. Changing to a permanent password helps protect your privacy and enhances the security of your computer, preventing unwanted access from others.

Additionally, to maintain privacy and security, please only provide this fixed password to people you truly trust. Alternatively, you can easily **change your Ultraviewer access password after each use or change it to whatever you like.**

You finished reading the article "**How to quickly and easily create a permanent password on Ultraviewer.**" edited by the [TipsMake](#) team. We hope this article has provided you with many useful tech tips and tricks. You can search for similar articles on tips and guides. Thank you for reading and for following us regularly.