

# How to quickly access the Windows 10 User folder

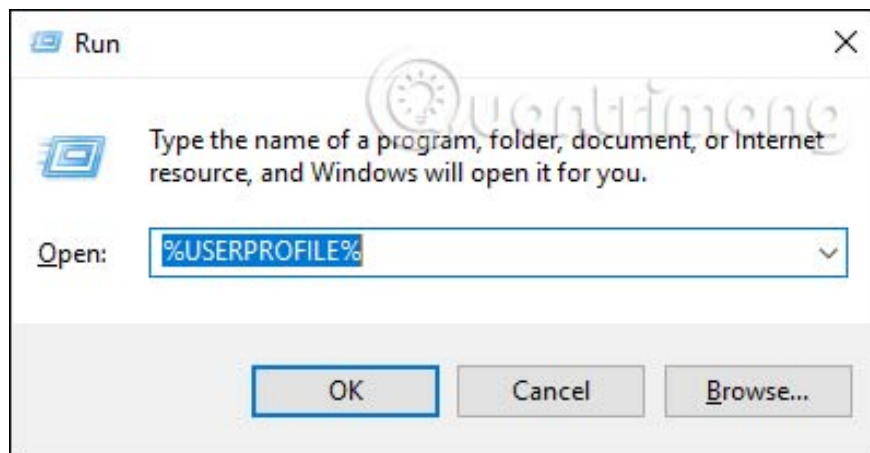
To quickly access the User folder on Windows 10, we have a lot of different ways to do it.

The User folder on Windows is a folder created specifically for each user account configured on the computer. The User folder contains important folders such as Documents, Pictures, Downloads, Desktop or AppData important data directory. Normally, to open the User folder, you will need to access the C drive and then navigate to the User folder. However, we can also shorten the operation through a number of quick access to the User folder that Network Administrator guides you to read below.

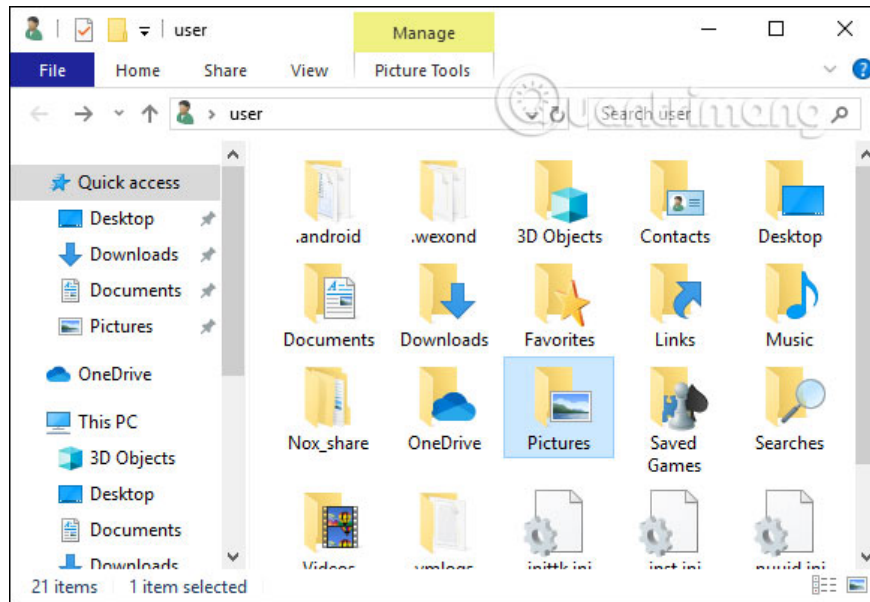
1. How to move user folders on Windows 10
2. How to create a new User on Windows 10 with Computer Management and Control Panel
3. Instructions 5 ways to delete the User account on Windows 10
4. How to transfer User Profile to another Windows 10 computer

## Method 1: Quickly open User via Run command

We press **Ctrl + R** and enter the **command% USERPROFILE%** to quickly open the User folder on the computer.

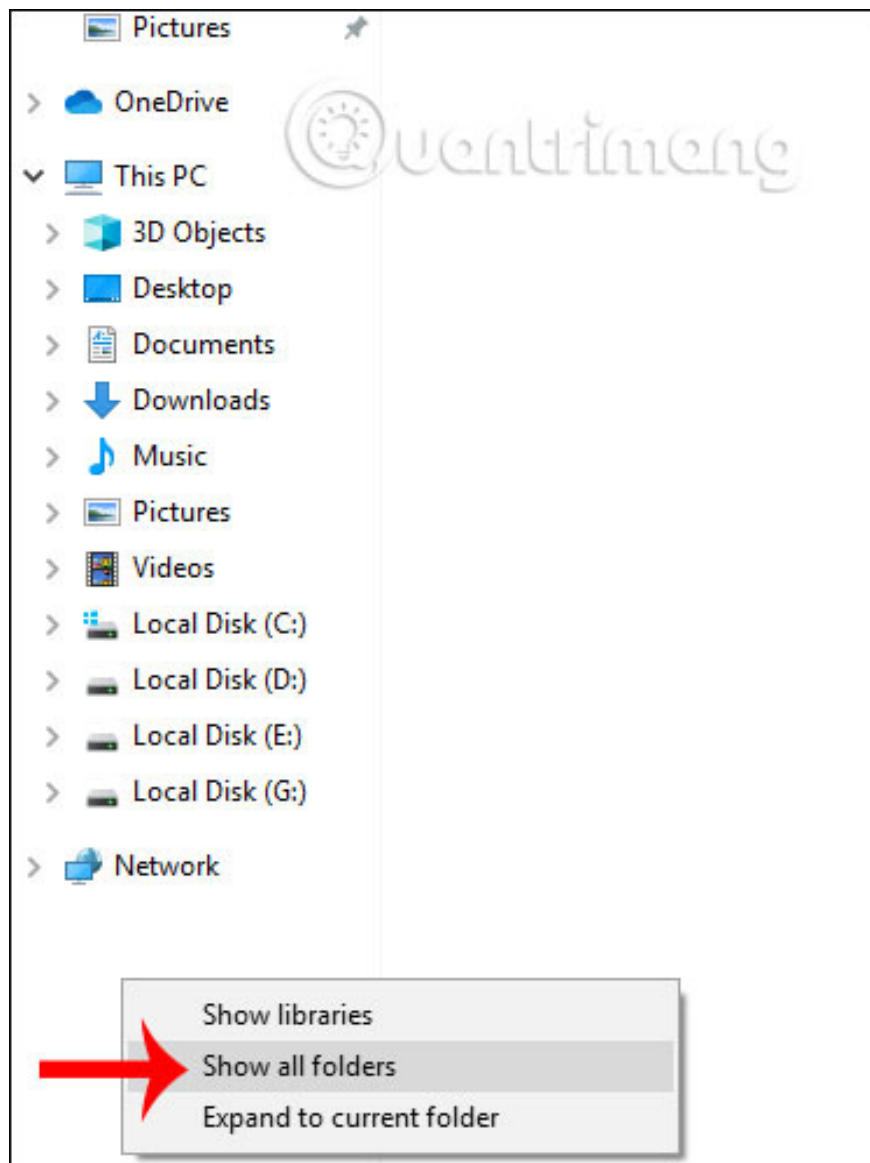


The results of the User folder show as shown below.

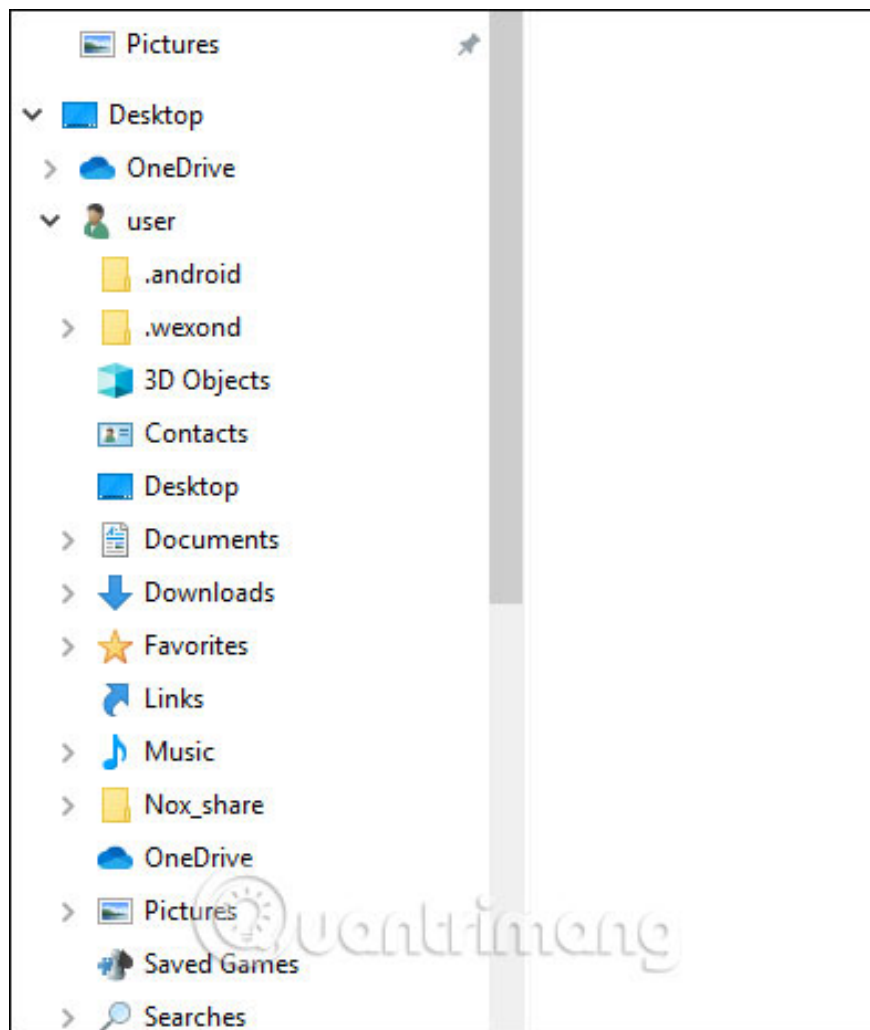


## Method 2: Access from File Explorer

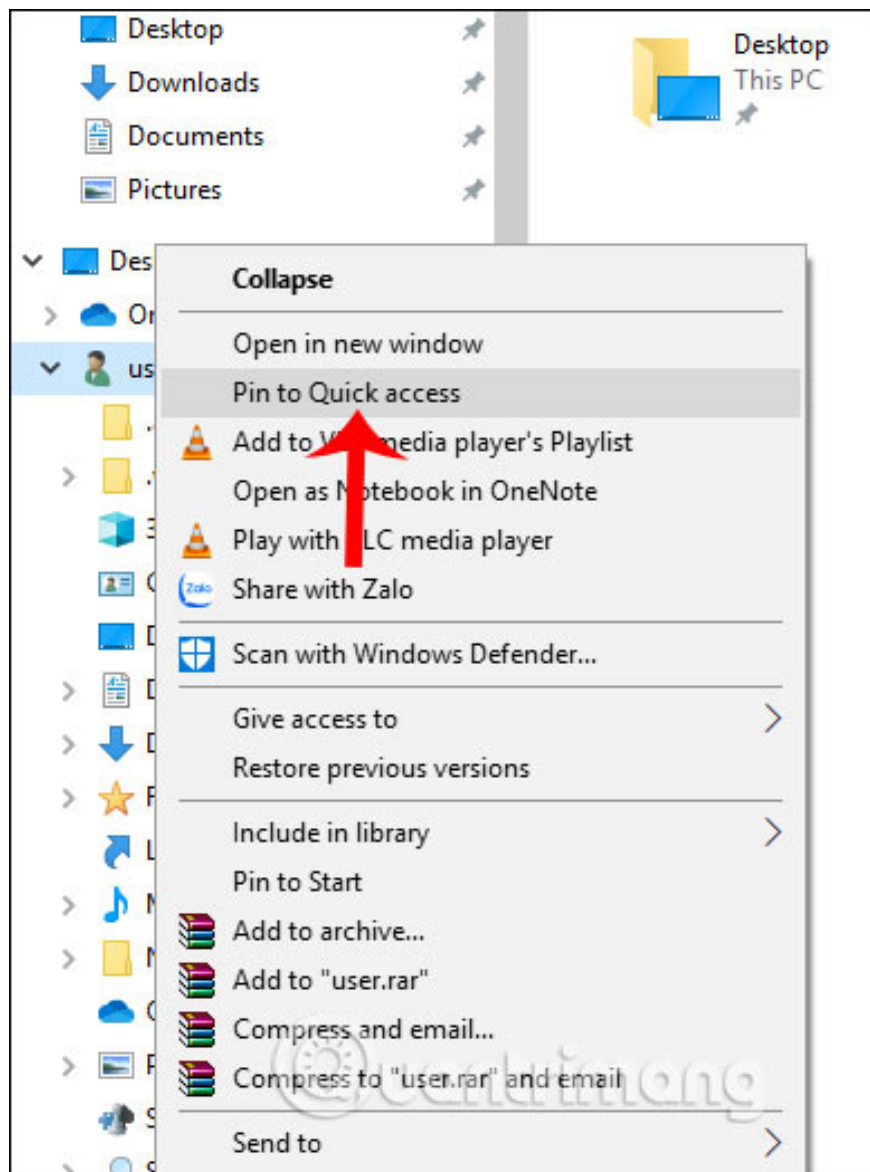
We open **the File Explorer interface** and then right click in the empty area of **the left menu interface** and select **Show all folders** .



The User folder will now be added to the navigation bar for quick access.

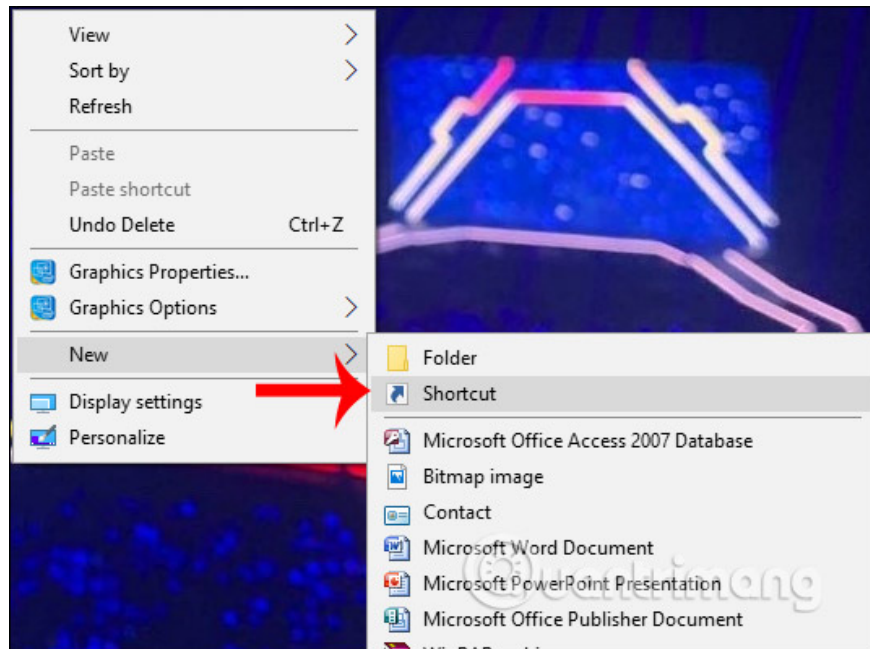


The navigation bar also has many different folders, so if you want it to always be visible, you can pin it to the Quick access section. Right-click on the User folder and select Pin to Quick Access.

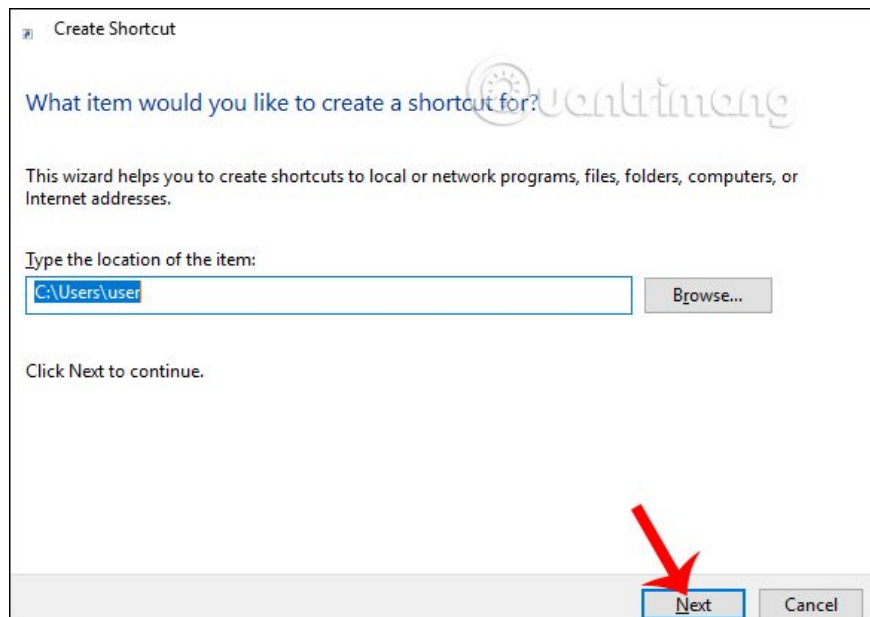


### **Method 3: Create a shortcut to access the User folder**

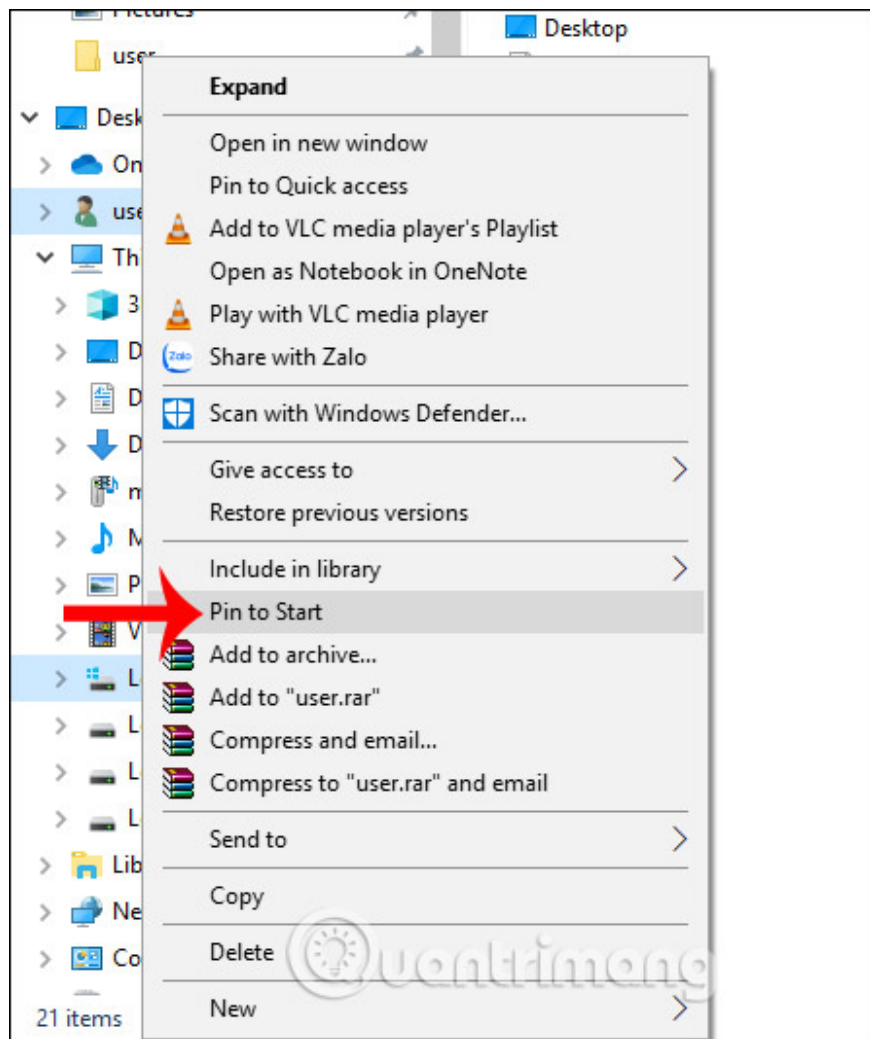
First, **right-click** an empty area of the desktop and choose **New> Shortcut** .



Next, **enter the path of the User folder** into the interface and select Next to continue. Name the shortcut and then **click Finish** to save it .



Or in the File Explorer interface, right-click on the User folder and select Pin to Start to attach to the Start menu interface.



Thus, accessing the User directory becomes much simpler through the quick access above. With method 3, you can apply to many other folders in the computer.

I wish you successful implementation!

You finished reading the article "**How to quickly access the Windows 10 User folder**" edited by the [TipsMake](#) team. We hope this article has provided you with many useful tech tips and tricks. You can search for similar articles on tips and guides. Thank you for reading and for following us regularly.