

How to put Google on Roku

What if you want to use your Roku for other things, such as browsing the web and organizing photos? What you need is access to Google services on your Roku.

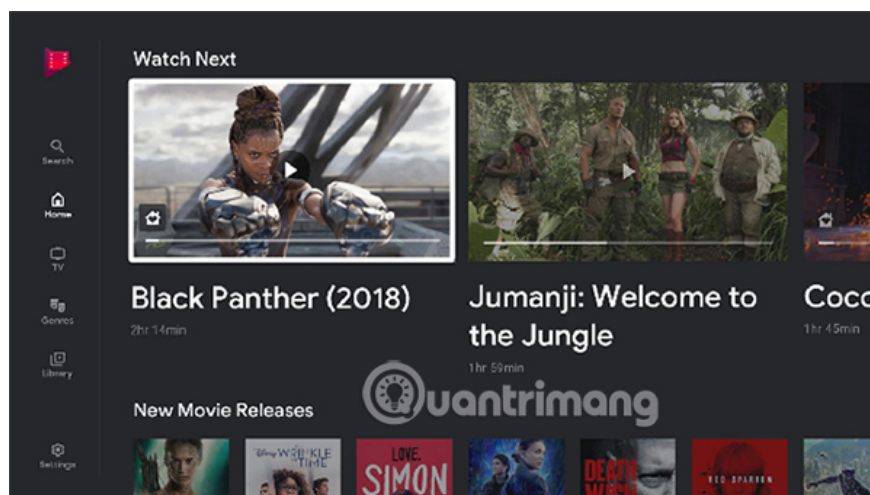
Roku devices are considered to be one of the best ways to stream content on your TV. However, what if you want to use your Roku for other things, such as browsing the web and arranging photos?

What you need is access to Google services on your Roku. And in this article, **TipsMake.com** will explain how to upload Google to Roku, including Google Play Movies and TV, Google Photos and Google Search.

A guide to bringing Google services and applications to Roku

1. How to put Google Play Movies and TV on Roku
2. How to put Google Play Music on Roku
3. How to bring Google Photos to Roku
4. Can you put Google Play Store on Roku?
5. Can you put Google Chrome on Roku?
6. How to put Google Search on Roku

How to put Google Play Movies and TV on Roku



The article will start with one of the simplest ways to get Google on Roku.

Because Roku devices support all major streaming services, it is not surprising to know that Google Play Movies and TV has an official Roku channel that you can download and use.

After installing Google Play Movies app on Roku, you need to pair it with your Google account by visiting **play.google.com/roku**. You will also need to provide a payment method during the registration process, although there will not be any fees to pay, unless you order something.

On Google's official help page, the company claims to have some geographical limitations. In theory, you can only use the application if you live in Canada, Germany, the Republic of Ireland, the United States or the United Kingdom. It is not clear how accurate this information is, but the article author can still download and access the service on Roku in another country. Just be aware that unsupported countries may experience some problems.

Download Google Play Movies and TV (Free).

How to put Google Play Music on Roku

Sadly, there is no official Google Play Music for Roku devices. There have been several ways to listen to Google Play Music on Roku. You can use Nowhere Music's own Roku channel or use a third-party plug-in for Plex. Unfortunately, both projects have stopped growing.

Therefore, the only option left is to transfer Google Play Music from your Android device or Windows computer directly to your Roku device. Roku stick (Roku online streaming device) uses Miracast technology, so iOS devices are not supported. See more article: [What is Miracast? How to use Miracast to stream media for more details](#),

This is a non-optimal solution for many reasons, but it still works. Just remember that you will need to control playback directly from your phone or computer, not via the Roku TV remote control.

To listen to Google Play Music on Roku, follow these instructions if you are an Android user:

1. Ensure your Android device and Roku device are on the same WiFi network.
2. On your Android, swipe down on the **Notification Bar** (**notification bar**).
3. Click **Cast**.
4. Select your Roku from the list of devices.

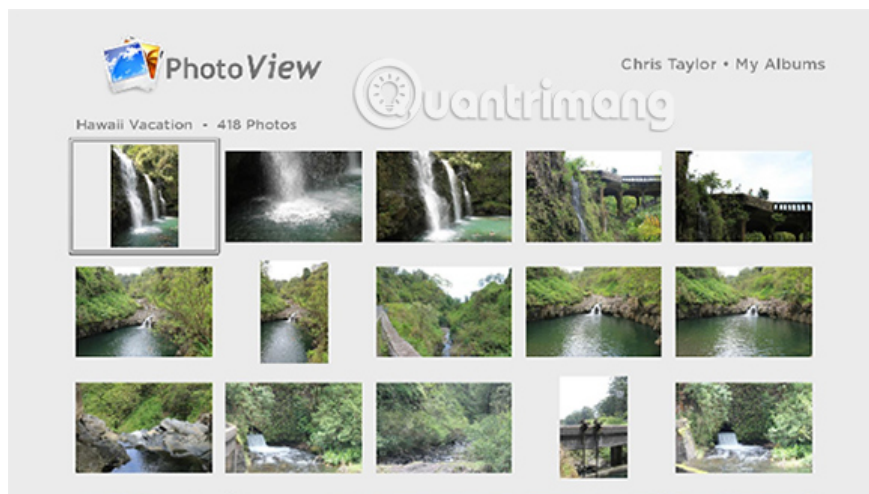
Or follow these steps if you use Windows:

1. Make sure your Windows computer and Roku device are on the same WiFi network.
2. Open the **Settings** application .
3. Navigate to **System> Display** .
4. Scroll to **Multiple Displays**.
5. Click **Connect to a Wireless Display** .

6. Select your Roku device from the list of available options.

As long as you are running Roku OS 7.7 or later, you will not need to take any action on the Roku device itself. The slideshow will start automatically.

How to bring Google Photos to Roku



Once again, there is no official Google Photos application for Roku. However, this time, you can use third-party apps from the Roku Channel Store.

This application is called **PhotoView for Google Photos**. This app launched at the end of 2016 and has not received much attention. Currently, PhotoView is the official 'partner' of the Google Photos app and has become the best way to access your photos on Roku.

PhotoView supports Google Photos album and has an integrated search feature. This app also comes with a screensaver feature. You can play your photos in slideshow when Roku is not used.

Please note that you will need to grant PhotoView access to your Google account during setup. Some people may feel uncomfortable with this.

Download PhotoView for Google Photos (Free).

Can you put Google Play Store on Roku?

Although surely many people want this to be possible, but unfortunately, there is no way to get Google Play Store on your Roku device.

The reason is that the platform services that Play Store relies on. Your Roku will need to run the Google Services Framework, Google Account Manager and Google Play Services. However, none is available. And, unlike Fire TV, there's no way to sideload those components onto your Roku stick.

In terms of bringing Google applications to Roku, the consequence of the lack of Google Play Store is, if you want to use software like Gmail, Google Calendar, Google Keep, etc., unfortunately you are not lucky.

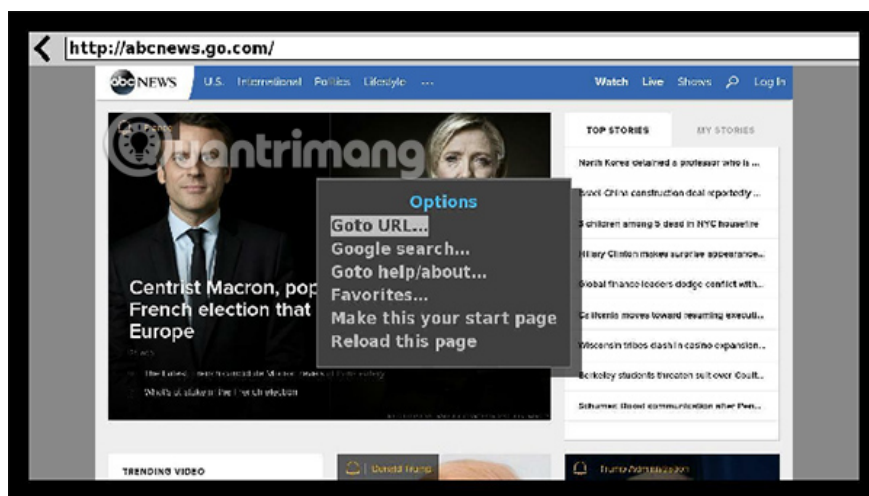
Again, the only feasible solution is to project your screen using the steps described earlier. In this case, the benefit of screen projection when using only the corresponding applications directly on your phone or tablet is also unclear.

Can you put Google Chrome on Roku?

A familiar saying, there is no Google Chrome application for Roku devices.

If you really need to access Chrome on the TV screen, you must project your screen from another Miracast enabled device.

How to put Google Search on Roku



If you are wondering how to get the Internet on Roku, then unfortunately have to report some bad news. Your list of choices is minimal. The quality of web browsers on Roku devices is not as strong as those on Fire TV stick or Android TV box.

Indeed, there are only two options to consider: Web Browser X and Poprism.

Poprism is only text based. It cannot display Flash content or images. Web Browser X is not reliable. To use Google Search, navigate to **google.com** in the usual way.

If both browsers are not working in your case, the only option is to show your Android or Windows screen on the TV again.

1. Download Web Browser X (Free).
2. Download Poprism (Free).

Of course, the prospect of using Google apps and services on Roku is great, but that doesn't mean there aren't many great Roku channels to choose from.

If you want more suggestions, be sure to read the **TipsMake.com** articles about the best free Roku channels.

Wish you find yourself the right choice!

You finished reading the article "**How to put Google on Roku**" edited by the [TipsMake](#) team. We hope this article has provided you with many useful tech tips and tricks. You can search for similar articles on tips and guides. Thank you for reading and for following us regularly.
