

How to project a laptop screen on a TV using WiFi Display / Wireless Display / Screen Share

WiFi Display is a wireless connection method that allows users to transfer images from tablet, phone, laptop screens to TVs that support Widi.

One of the ways of projecting a tablet, phone, laptop screen on a TV screen is WiFi Display or Wireless Display. This is the wireless connectivity standard developed by Intel, which supports transferring content from laptops to TVs that support Widi.

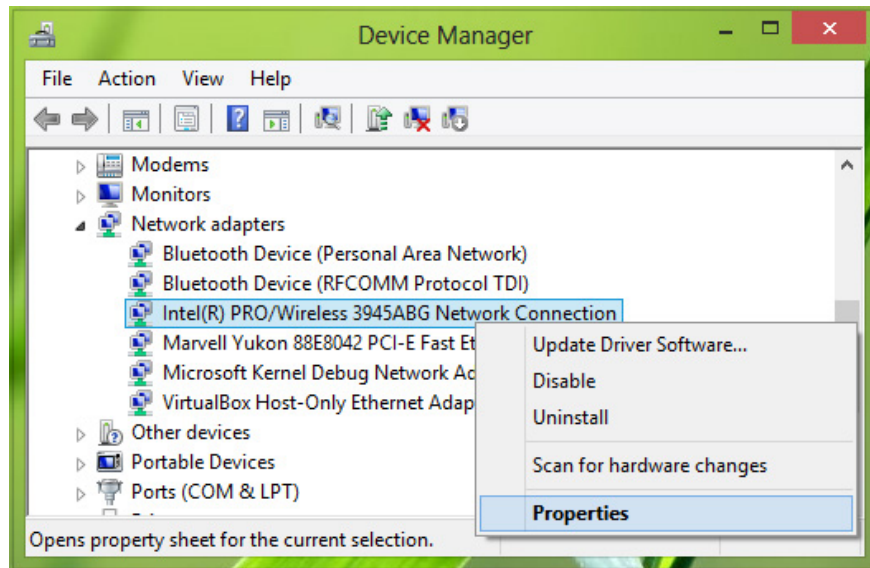
Compared to before to be able to project any content from a laptop device to a computer, we will use HDMI wired connection. And according to the rapid development of technology, many ways of connecting between TV and computer have been born, including WiFi Display. We will not need to prepare an HDMI cable, a quick presentation method. Images and sounds transferred from the computer to the television are always guaranteed to meet the user's needs. The following article will show you how to project a laptop screen on a TV using Wifi Display.

Note to readers, to be able to present, the computer is from Windows 7 and above and uses Intel Core i 3, 5, 7 generation 2 and above and uses Intel WiFi card.

How to project a laptop screen on a TV using WiFi Display / Wireless Display / Screen Share

Step 1:

First of all, to check if your computer uses Intel WiFi card, click on **This Computer** icon (My Computer)> **Manage** > **Device Manager** > **Network Adapter** . Seeing **Intel Wireless** means your laptop uses Intel's WiFi card.



Step 2:

On TV we will turn on WiFi Display feature. Depending on the smart TV line, this feature has many different names, such as Widi, WiFi Direct, Wifi Display, Wireless Display, and Screen Share.

You can find them at the interface on the home page of the television or search at the TV settings, along with the password.

Step 3:

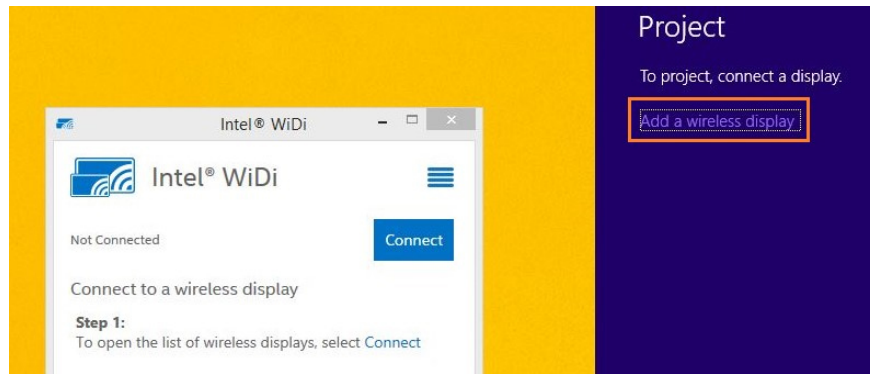
Next we will open the WiFi Display feature on the computer.

With Windows 7 laptop , we download the Widi software in the link below, then install and open it. Immediately the computer will scan for connected TV, you choose to enter the TV, enter the password (if the device requires) and 2 devices will connect.

1. Download Intel WiDi Pro software

With Windows 8 and 8.1 computers :

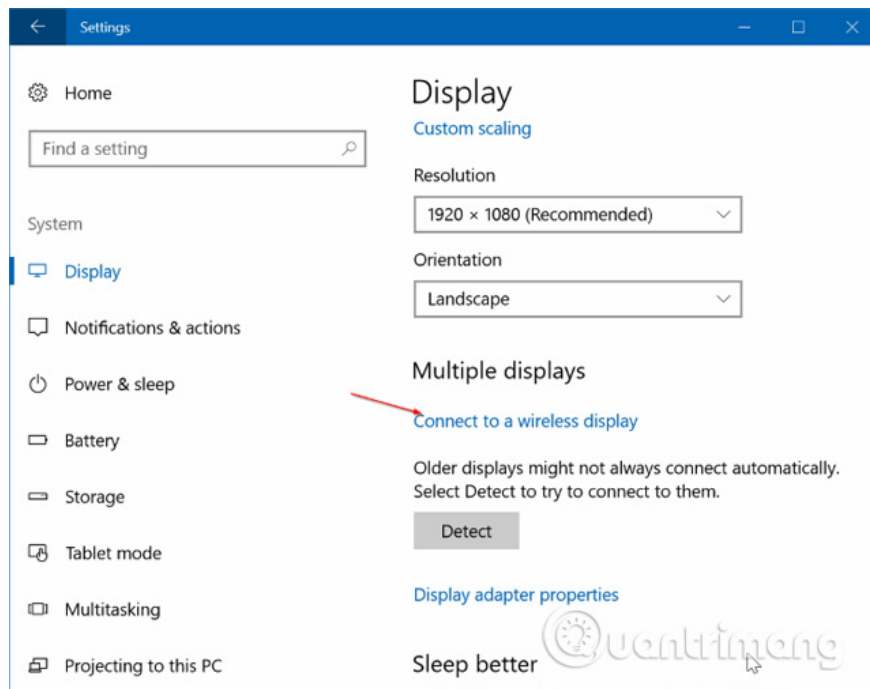
Open the settings list on the right of the screen, at **the Devices menu**, select **Project** . Then select **Add a Wireless Display** then select the TV you want to connect, enter the password (if the device requires) and 2 devices will be connected.



For Windows 10 , you need to see a laptop and a TV that supports Miracast standard. Miracast is a wireless technology used to wirelessly display a computer screen on a Miracast-supported TV or monitor. See the article [How to check if a Miracast-enabled Windows computer is available for testing](#).

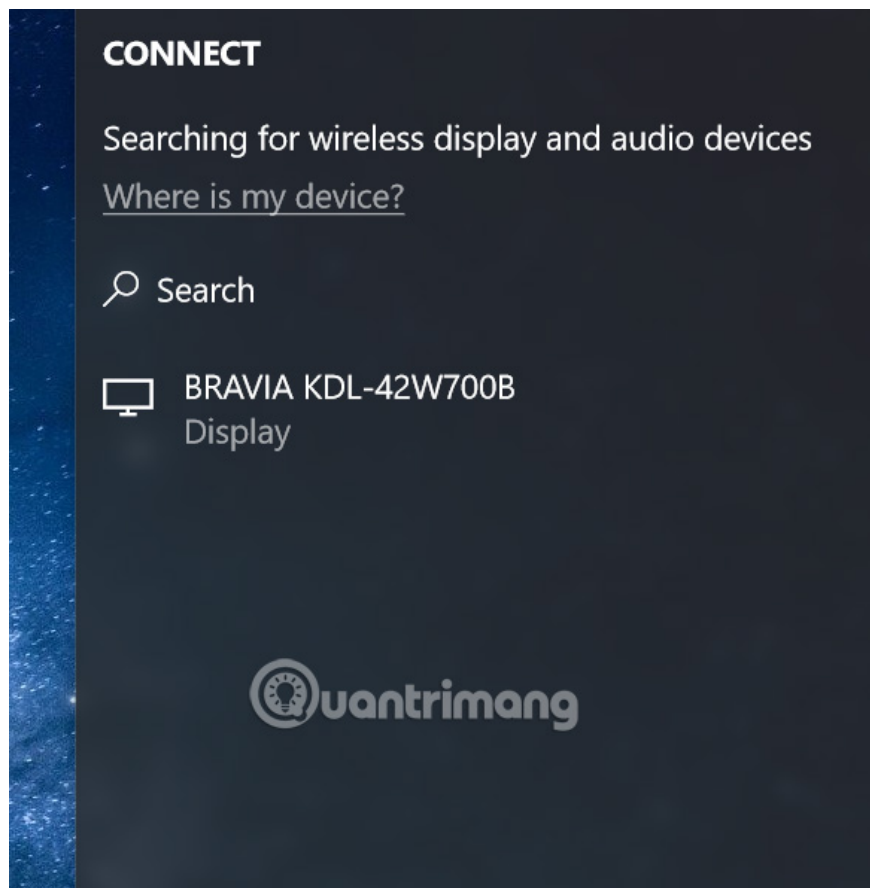
How to wirelessly connect a Windows 10 laptop to a TV

1. On a laptop or tablet running Windows 10, navigate to the **Settings> System> Display application** .
2. In the **Multiple displays** section, click the **Connect to a wirelessly display link** . Windows 10 will then start searching for all available wireless devices and list them in the newly opened **Connect** window.



NOTE : If you do not see the **Connect to a wireless display link** , it may be because your device is not supported by Miracast or has not installed the necessary driver.

3. If you see the TV displayed in the list, click on the device to wirelessly connect the Windows 10 laptop to the TV.



If Windows 10 cannot find the TV or monitor, click and the **Detect** button in the **Multiple displays** section.

Change projection mode settings

By default, when connecting your laptop to a TV or external monitor, Windows 10 uses the projection mode used last time. For example, if you used the TV the last time to extend the screen of a hand-held computer, the next time you use Windows 10 will automatically use the TV as an extended screen when connected to it.


If you want to use the TV screen or change the default projection mode, you can change the projection mode setting and this is how.

1. Navigate to **Settings> System> Display** and click on the **Connect to wireless display link** to see the **Connect** window.
2. Click **Change projection mode** to select the projection type, it has three modes of **Duplicate** , **Extend** and **Second screen only** for your choice.

CONNECT

Disconnect first, and then the search will begin

Where is my device?

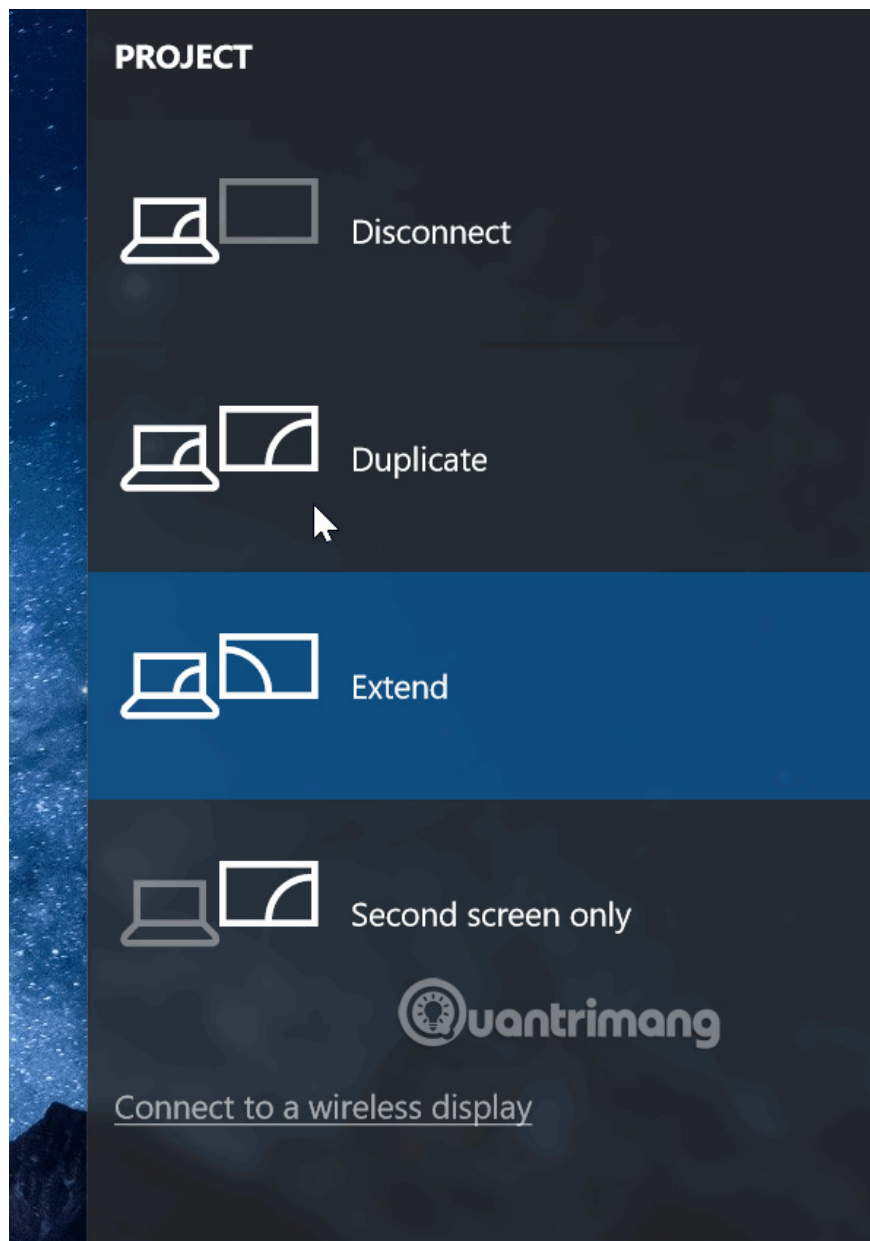
 Search

 BRAVIA KDL-42W700B
Connected - Extend 

Change projection mode

Disconnect

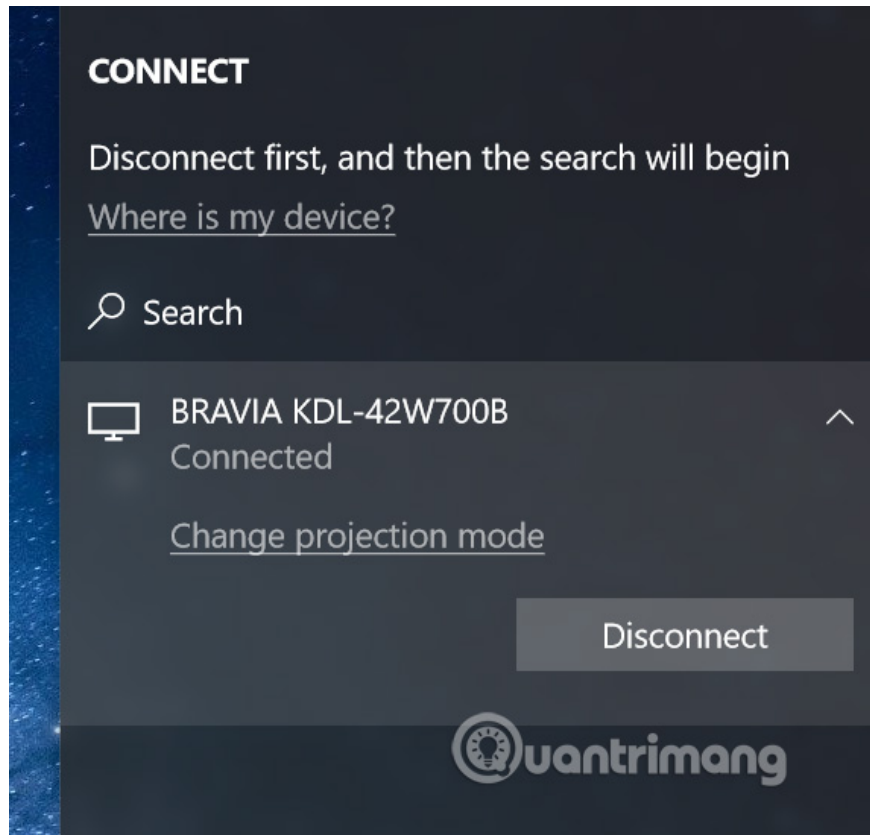




Alternatively, you can use the **Windows + P** shortcut to open the **Project** panel and select the appropriate mode.

How to disconnect from the TV

1. Navigate to **Settings> System> Display application** .
2. Click the **Connect to a Wireless display link** to display the **Connect** window, then click **Disconnect** to disconnect the laptop from the TV or display.



Similarly, you can press the **Windows + P** key combination to open the **Connect** window and click **Disconnect** here.

I wish you all success!

See more:

1. How to project Android screen on Windows 10 with Miracast and Connect
2. 8 ways to project your phone screen on a television
3. How to project a computer screen to a TV with Chromecast

You finished reading the article "**How to project a laptop screen on a TV using WiFi Display / Wireless Display / Screen Share**" edited by the [TipsMake](#) team. We hope this article has provided you with many useful tech tips and tricks. You can search for similar articles on tips and guides. Thank you for reading and for following us regularly.