

How to project a computer screen to a TV with Chromecast

Want to project your computer screen on TV? You can do this with an HDMI cable, but an inconvenience is the location of the computer depends on the length of the cable. However, with Google's Chromecast, you can project any browser tab or the entire computer screen on a TV in just a few simple steps.

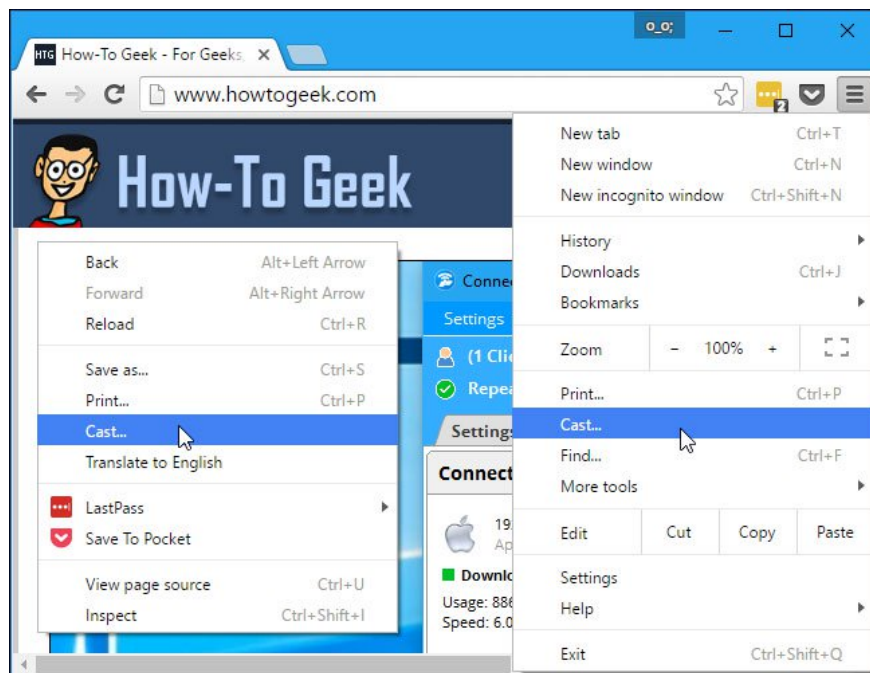
Want to project your computer screen on TV? You can do this with an HDMI cable, but an inconvenience is the location of the computer depends on the length of the cable. However, with Google's Chromecast, you can project any browser tab or the entire computer screen on a TV in just a few simple steps.

1. How to fix some errors connecting TV to laptop via HDMI port

This feature is now integrated into Google Chrome, so now you don't need Google Cast extension to do this anymore. However, you can only use Google Chrome, but cannot use other browsers such as Mozilla Firefox or Microsoft Edge.

How to transfer from Chrome

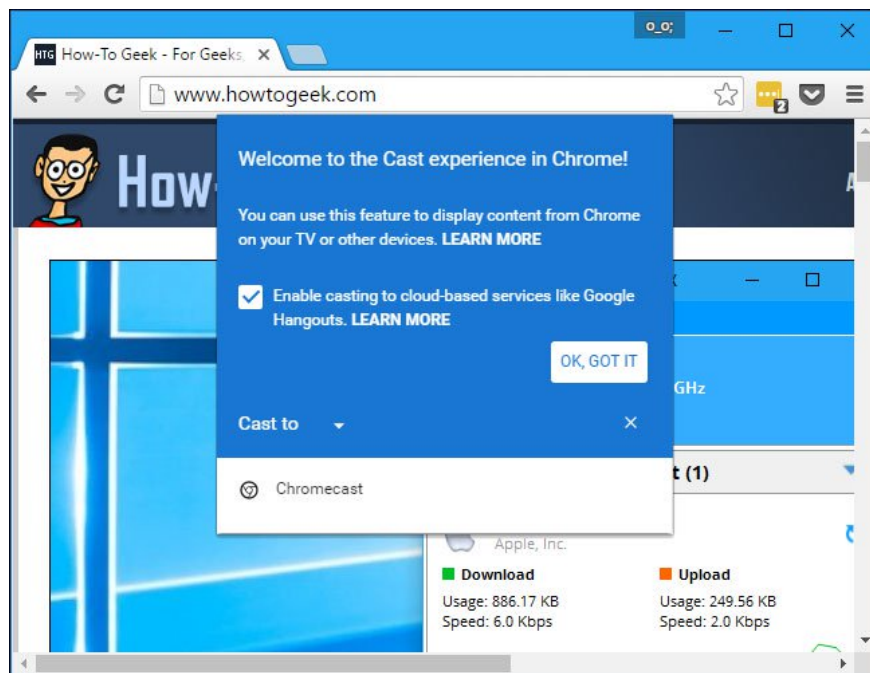
If you only bought Chromecast, you first need to install the Google Home app (Android, iOS) on your phone or tablet and set it up before continuing. To start streaming, click on Chrome's menu on the right of the window and select " **Cast** " or right-click on the current page and select " **Cast** ".



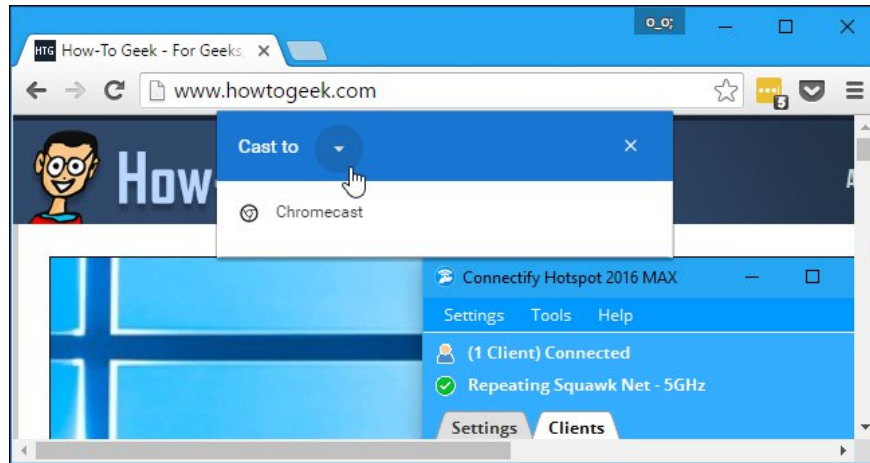
When you first open the Cast dialog, you will see the option " **Enable casting to cloud-based services like Google Hangouts** " which allows you to switch browser tabs directly to Google Hangouts and other services like Cast for Education, designed. for classroom projectors.

For example, if you have this option turned on and you are making a Google Hangout video call, you can select the " **Cast** " option in Chrome and the Google Hangouts call will appear as an option on Chromecast devices. Select it to transfer the call to others.

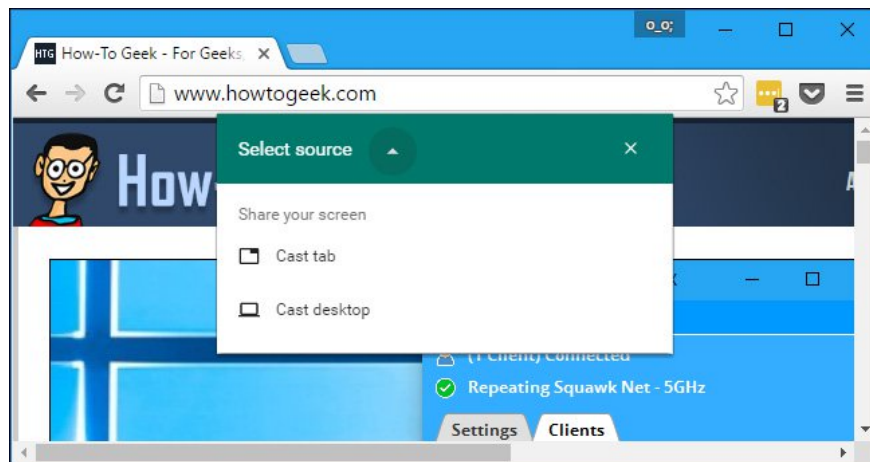
Then a dialog box appears, tick the box on the message and then click on ' **OK, Got It** '.



A smaller dialog box appears, click the arrow next to 'Cast to' to select the content you want to share.

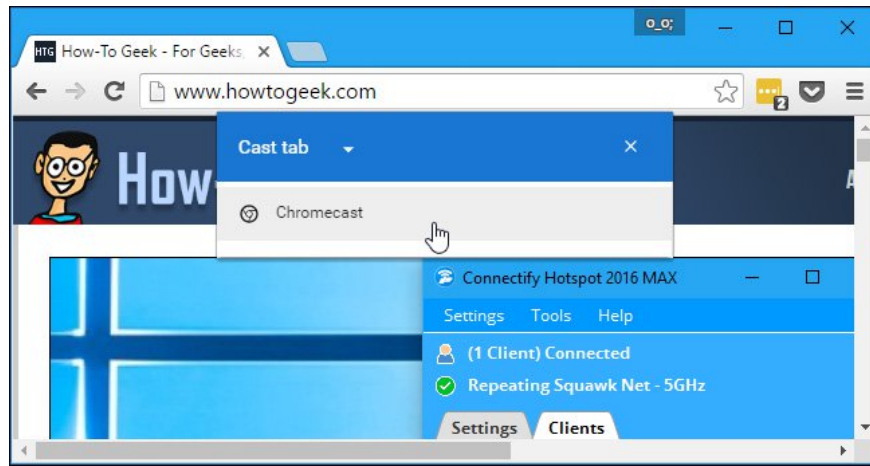


When transmitting from websites, you can click on the small drop-down arrow to choose to show only the current tab or the entire computer screen on the TV.



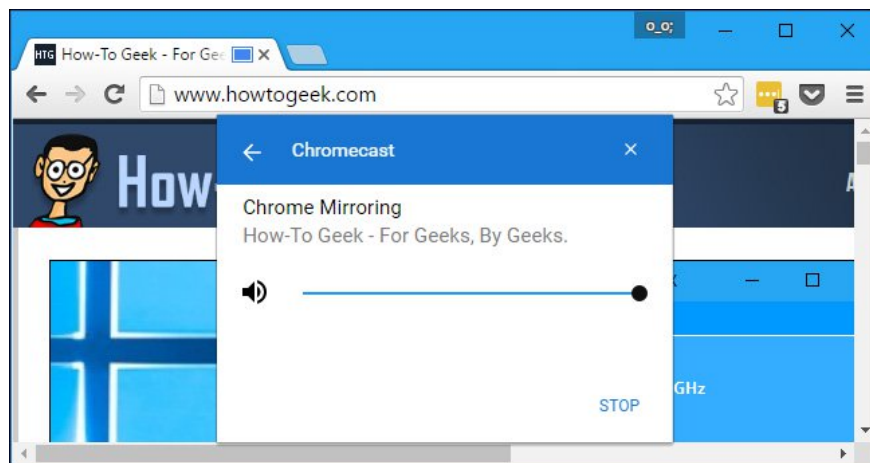
How to project a tab in the browser to the TV

To project a tab on the TV, select " **Cast tab** " and then click on Chromecast in the list. If not selected, Chromecast will automatically start tab transitions by default. It will automatically detect if you are online. For example, you need to turn on the TV if you are turning on Chromecast via the TV USB port.



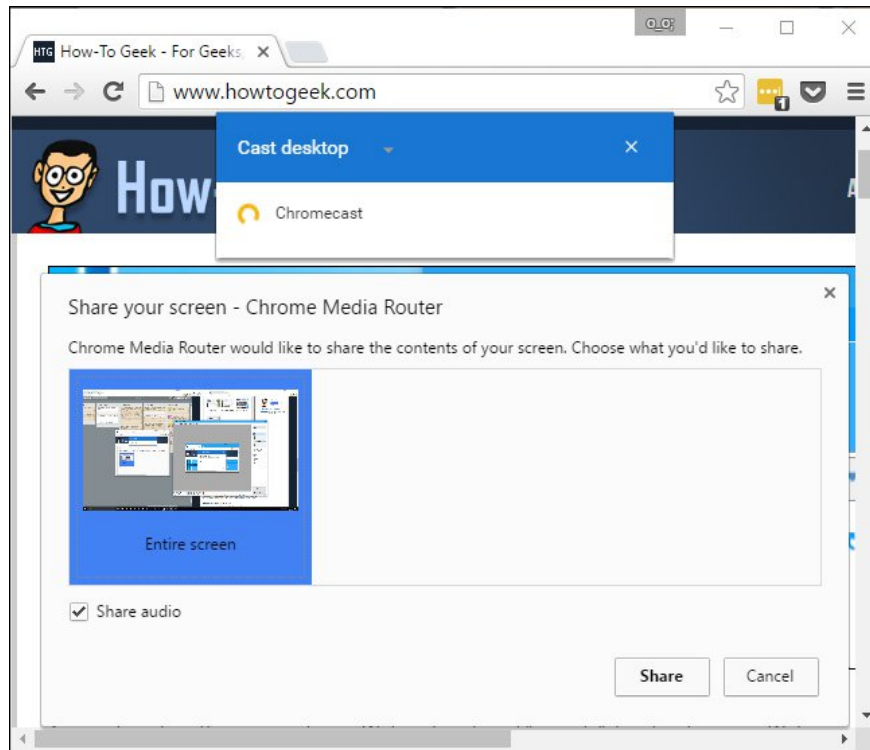
When transmitting tabs, you will see a blue " **Cast** " icon on the left of "X" on the browser tab. To adjust the volume or stop tab transmission, right-click the page and select " **Cast** " or click the menu button and select " **Cast** ". The Cast dialog box will reappear, providing volume control and the " **Stop** " button to stop the transmission.

You can close this dialog box if you want by clicking "X". Chrome will only stop streaming if you close the tab or click the " **Stop** " button.

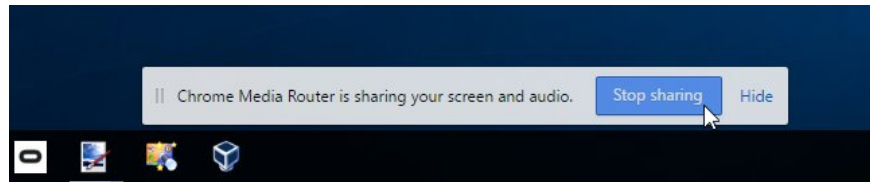


How to transfer computer screen to TV

To transfer the computer screen, select " **Cast desktop** " in the list and then click the Chromecast you want to transfer to. When you want to transfer the entire computer screen, you need to choose exactly what you want to share on the screen and choose to share the audio if you want.



During the screen transfer, you will see a " **Chrome Media Router is sharing your screen [and audio]** " message at the bottom of the screen. Click " **Stop sharing** " to stop the transmission. Click on " **Hide** " to ignore this message. This message will reappear when returning to the Chrome window, allowing you to stop the transmission.

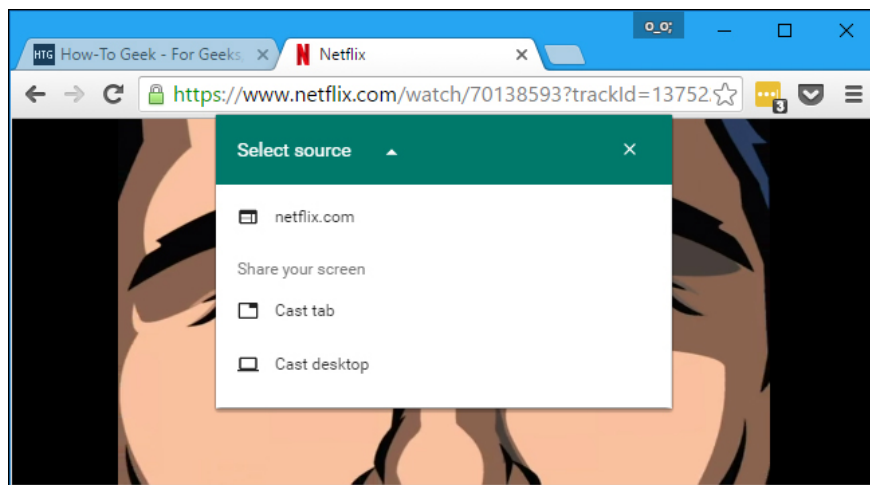


How to transfer a supported website Chromecast

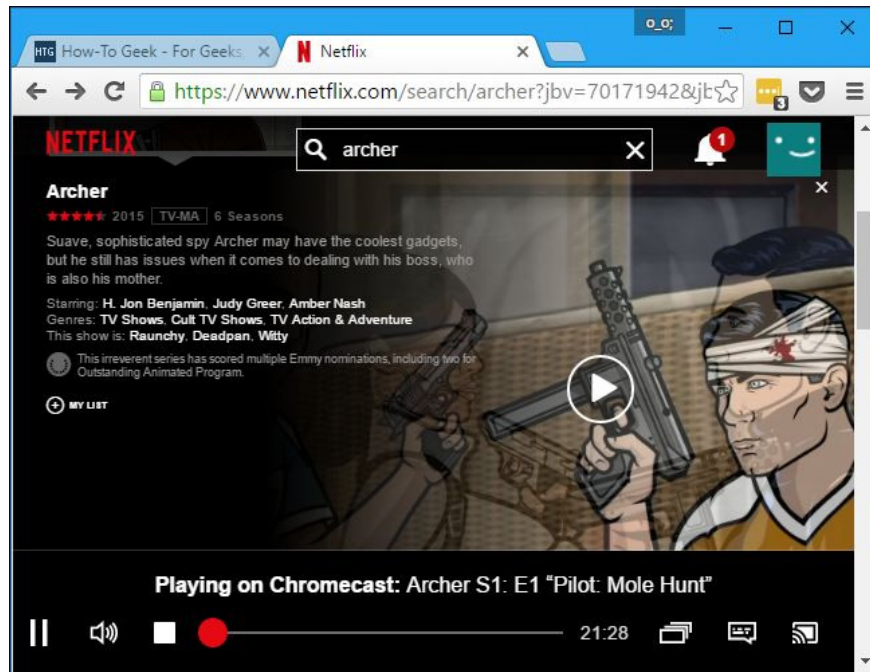
Some sites, such as YouTube and Netflix, support Chromecast. On these websites, you will see a special " **cast** " icon in the video or audio player. This is similar to how Chromecast works with YouTube, Netflix and other supported apps on Android and iOS devices.



Click on this icon or select the normal " **Cast** " option in Chrome's menu. If using Chrome's menu, click on the " **Select source** " icon and select the site from the list. Any specific content on that site, Chrome automatically transmits the web page instead of the browser tab.



How to transfer from a supported website differs from passing a tab in the browser. Chromecast will stream the video, so the performance will be better and run smoother when projecting a tab on the TV. See more articles [How to improve video quality when playing via Chromecast to get better viewing quality.](#)



Extension Google Cast

The Google Cast extension is still available for everyone to download, however, it does not provide much functionality, only a one-click tool icon to access Chrome's 'Cast' feature. Normally you just need to right click on the current page or open the menu to access this situation, extension Google Cast only saves users some operations.

Previously, this extension was the only way to transfer from Chrome. It also provides additional options, such as the ability to fine-tune the video quality and only transmit audio from a specific tab. These options seem to be no longer available.

Google Chromecast is a versatile device with many features and you can do a lot in the browser tab. Plus you can also customize Chromecast with custom wallpaper.

See more:

1. 9 things to know about Google Chromecast
2. 8 ways to project your phone screen on a television
3. How to use Chromecast with iPad, iPhone and Android

You finished reading the article "**How to project a computer screen to a TV with Chromecast**" edited by the [TipsMake](#) team. We hope this article has provided you with many useful tech tips and tricks. You can search for similar articles on tips and guides. Thank you for reading and for following us regularly.