

# How to Program a Dish Network Remote

Today's TipsMake will show you how to program your Dish Network remote to work with TVs, DVD players, etc. You can use the code to program most remotes; If this method doesn't work for the device you choose, you can still search through available codes until you find the appropriate code.

## Remote control series 40 and above



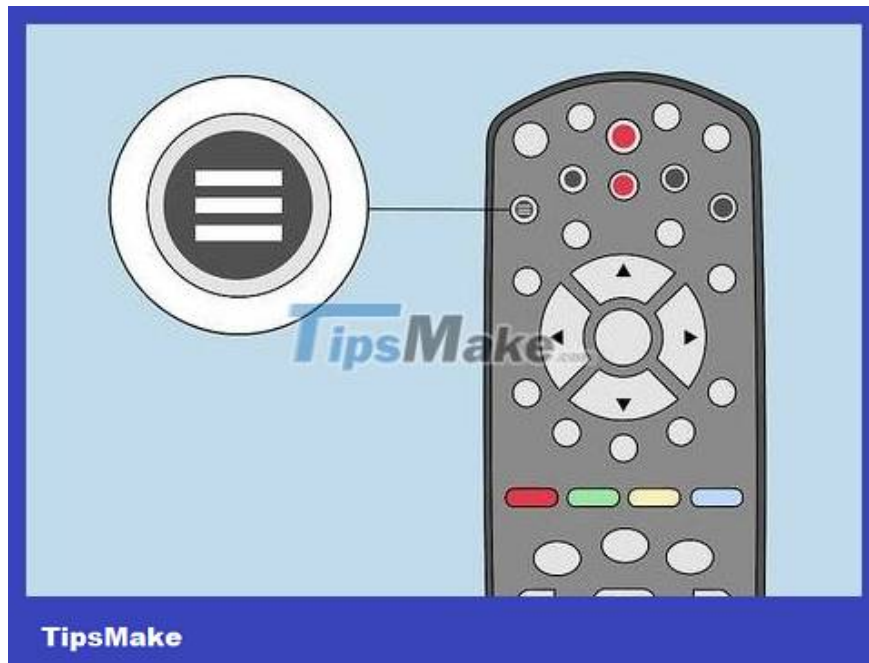
**You need to make sure you have the right remote.** If you have a model 40.0, 50.0, 52.0 or 54.0 remote control, this method is suitable.

With remote series 20.0, 20.1, 21.0 or 21.1, we need to apply the next method.

You can find the remote's product code in the manual.



**Turn on the TV.** Press the TV's **power** button , then check to make sure the TV is set to the Dish Network input.

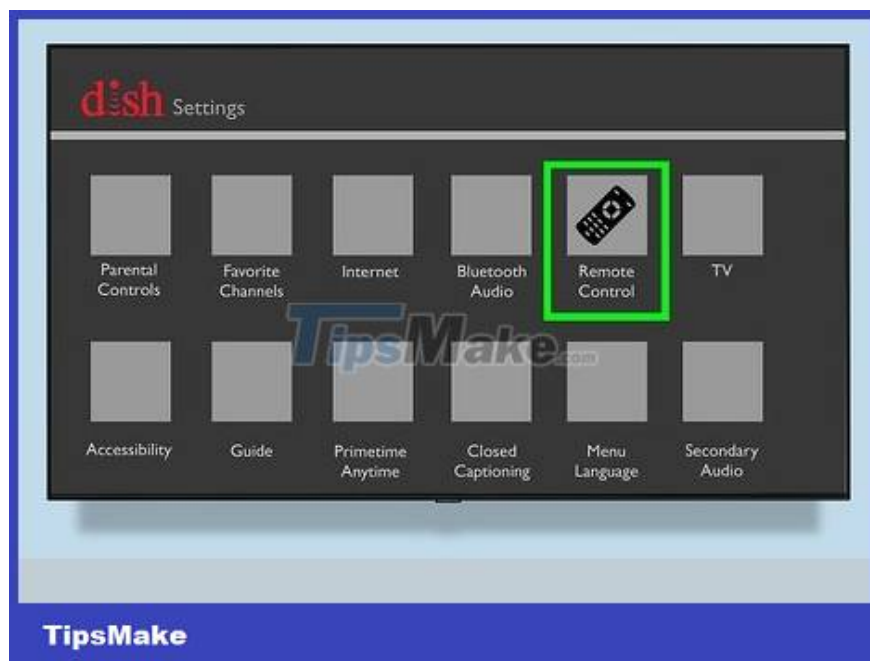


**Open the menu.** Press the **HOME** button twice or the **MENU** button once.

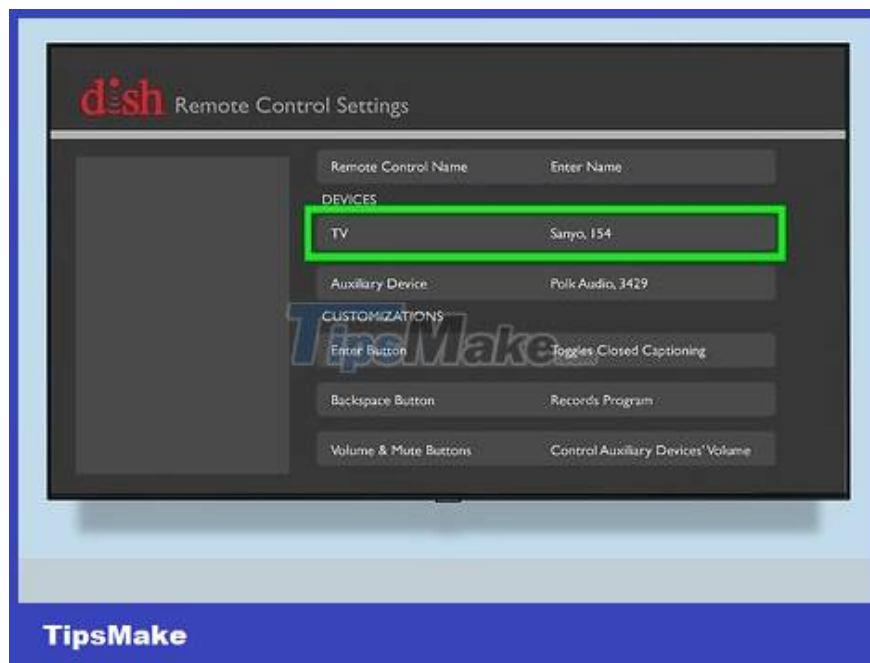
This operation depends on the specific model number of the remote.



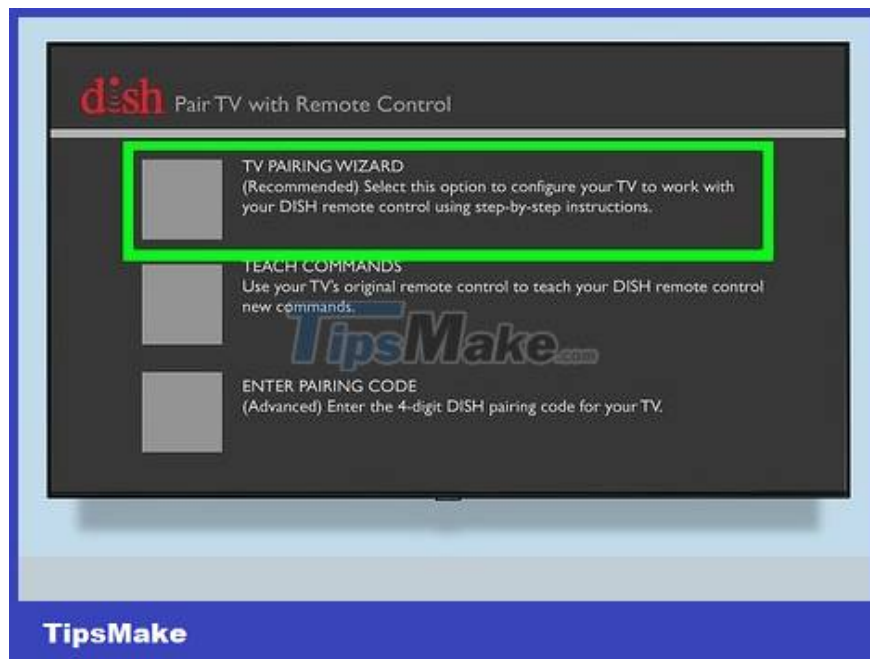
**Select Settings** . This option is in the middle of the screen. You can then navigate using the arrow keys on the remote and press **ENTER** or **OK** to select.



**Select Remote Control** . This option is at the top of the list on the screen.



**Select device.** Scroll down to the "DEVICES" heading, then select **TV** or **Auxiliary Device** depending on whether you want to program the remote for a TV or another device (for example, a DVD player).



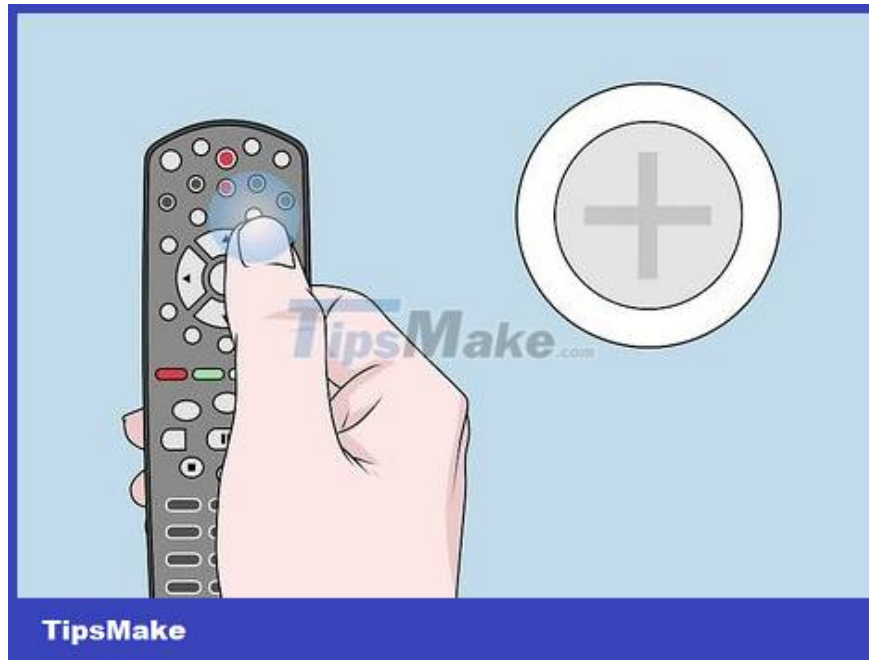
**Select PAIRING WIZARD** near the top of the screen.



**Select device brand.** Select the letter combination that represents the manufacturer's name, then scroll through the list to find and select the corresponding manufacturer.



**Select Next on the right side of the screen.**



**Try the remote.** This step will vary depending on the device you are pairing with the remote:

*TV* — Press the **volume up** button and listen to see if the volume increases.

*Other devices* — Press the **power** button and observe whether the device turns on/off.

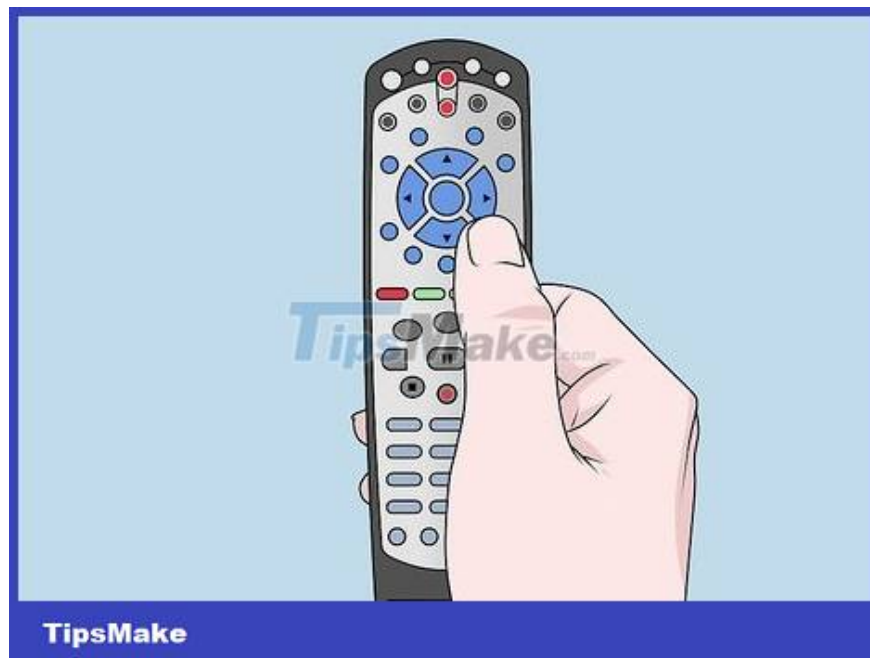


**Try another code.** If after you test the remote doesn't work, select **Try Next Code** at the bottom of the screen and try the remote again.



**Select Finished when you find the correct code.** After finding the code for the remote, select **Finished** at the bottom of the screen to complete the programming process. Remote will work with TV or auxiliary device.

### **Remote control series 21 and below**



**You need to make sure you have the right remote.** If you have a model 20.0, 20.1, 21.0 or 21.1 remote control then this method is suitable.

With 40.0, 50.0, 52.0 or 54.0 series remotes, you need to proceed with the previous method.

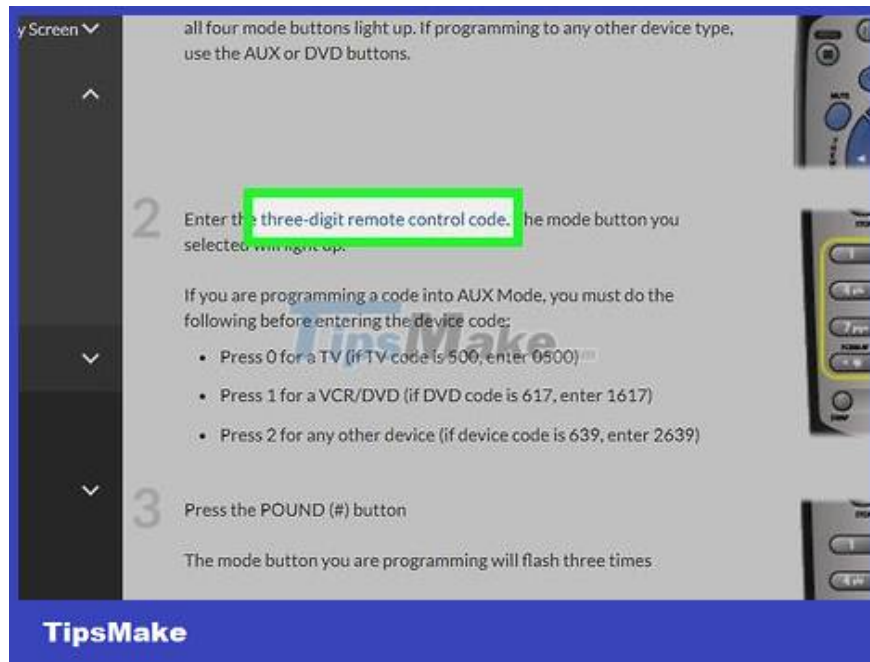
You can find the remote's product code in the manual.



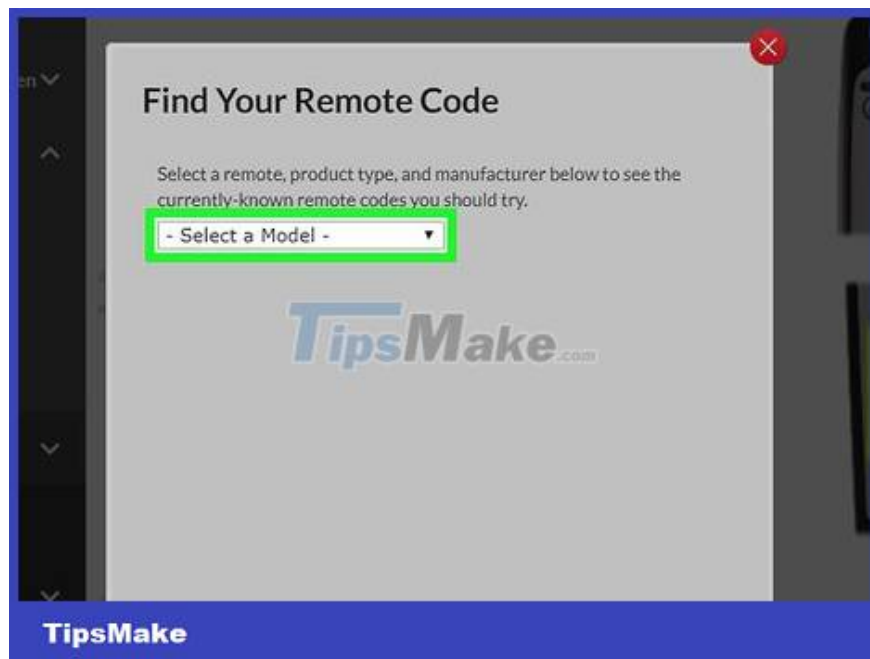
**Open the remote control model website.** Visit <https://www.mysdish.com/support/products/remotes/how-to-program-to-tv-or-other-device> using your computer's web browser.



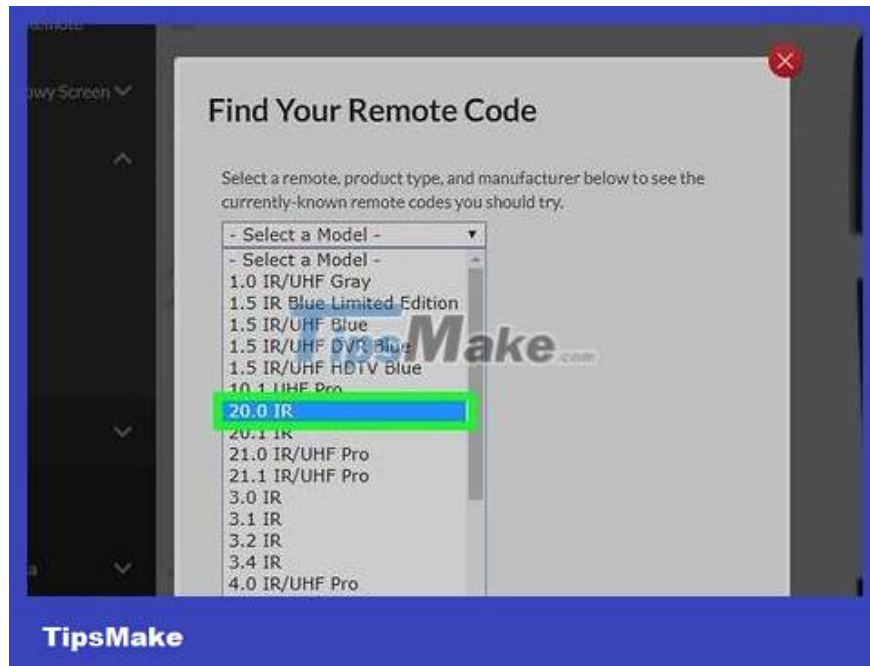
**Select remote type.** Click the headings **20.0**, **20.1**, **21.0**, **21.1** near the top of the page.



Click the **three-digit remote control** link located in the continuation of step two near the middle of the page. A window will pop up.



Click the **"Select a Model"** drop-down box in the middle of the window. A menu will drop down.



**Select the remote name.** Scroll down until you find the remote's specific name and model number, then click on it.

Again, you can locate this number in the remote's instruction manual.



**Select device.** Click the "Select a Product Type" drop-down box and then click the name of the device for which you want to program the remote (for example, **DVD** ).



**Select manufacturer.** Click the "Select a Manufacturer" drop-down box and then click the device manufacturer name.



**Take a look at the available codes.** Depending on the information you entered, you will see at least a three-digit code appear here.

Some devices have 10 or more codes. In this case, you can try the code with the highest "Success Count" rating first (usually at the top of the list).



**Turn on the device for which you are programming the remote.** For example, if you want to program the remote to work with a DVD player, the device must be turned on.



**Point the remote at the device and hold down the appropriate button.** The button you need to press will depend on the device you are programming the remote for:

*TV* — Press and hold the **TV** button at the top of the remote.

*Other devices* — Press and hold **the AUX** (all devices) or **DVD** (with DVD players and VCRs) button.



**Wait for the four lights on the remote to flash.** These lights are located at the top of the remote. After these lights flash, you can release the button you are holding and proceed to enter the code.



**Insert code.** Use the remote's numeric keypad to enter the three-digit code you see on the device. You may need to enter additional numbers depending on the device:

In case of remote programming for a VCR or DVD player, you need to enter the number **1** before the three-digit code.

If you program a device other than a TV, enter a **2** in front of the three-digit code.

If you held down the **AUX** button while connecting the remote to the TV, enter a **0** before the three-digit code.



**Press # button to confirm the code.**



**Observe the three flashes.** These lights are located near **the TV , AUX , or DVD** buttons depending on the remote you use. If these three lights are flashing, the remote has been programmed for use with the device you choose.

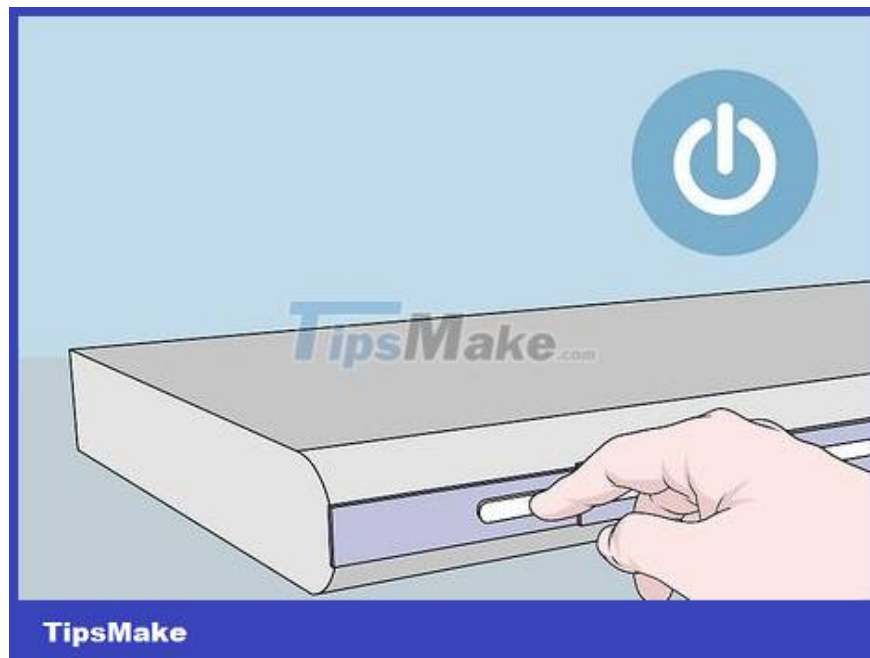
If these three lights do not flash, you need to use another three-digit code.

If there are no more codes to try, proceed with code scanning.

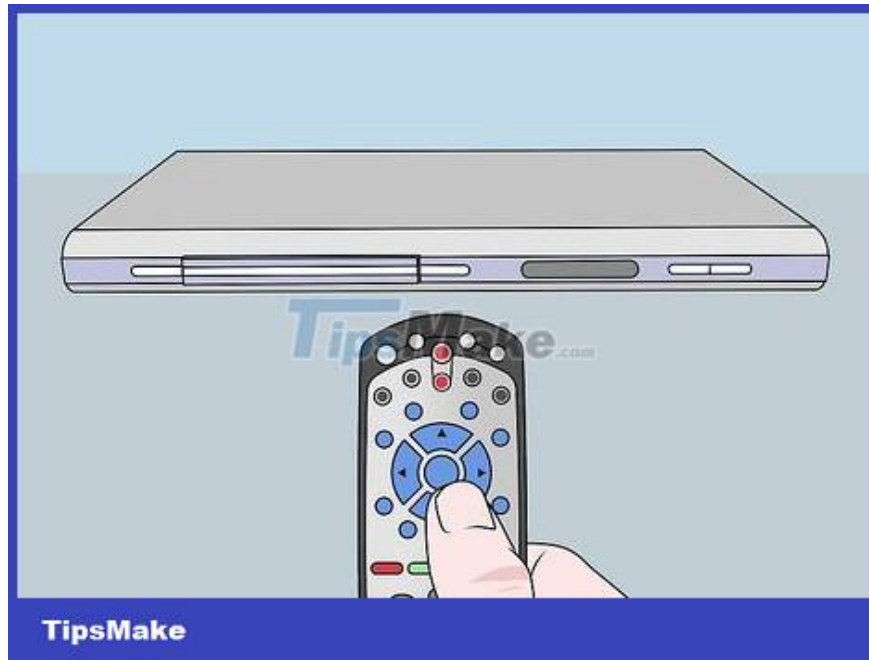
**Connect by scanning the code**



**You need to understand how to decode the code.** This process allows you to manually initialize all available code for the selected device. While this is a good way to make sure you eventually find the right code, this process searches through hundreds of available codes and takes more time.



**Turn on the device you want to program the remote for.** For example, if you want to program the remote to work with a DVD player, the device must be turned on.



**Point the remote at the device and hold down the appropriate button.** The button you need to press will depend on the device you are programming the remote for:

*TV* — Press and hold the **TV** button at the top of the remote.

*Other devices* — Press and hold **the AUX** (all devices) or **DVD** (with DVD players and VCRs) button.



**Wait for the four lights on the remote to flash.** These lights are located at the top of the remote. After these lights flash, you can release the button you are holding and proceed to enter the code.



**Press the power button at the top of the remote.** This button signals that the remote control is ready for tuning.



**Start pressing the "up" or "down" arrow key on the remote.** The device will start scanning for available codes.

Each time you press the arrow key the next code will be applied.



**Continue pressing the arrow keys until the device turns off.** The device will turn off when you find the appropriate code.



**Press # button to confirm the code and apply to the remote.**



**Press the power button on the remote again.** The device will turn back on, indicating that the remote has been programmed properly.

You finished reading the article "**How to Program a Dish Network Remote**" edited by the [TipsMake](#) team. We hope this article has provided you with many useful tech tips and tricks. You can search for similar articles on tips and guides. Thank you for reading and for following us regularly.