

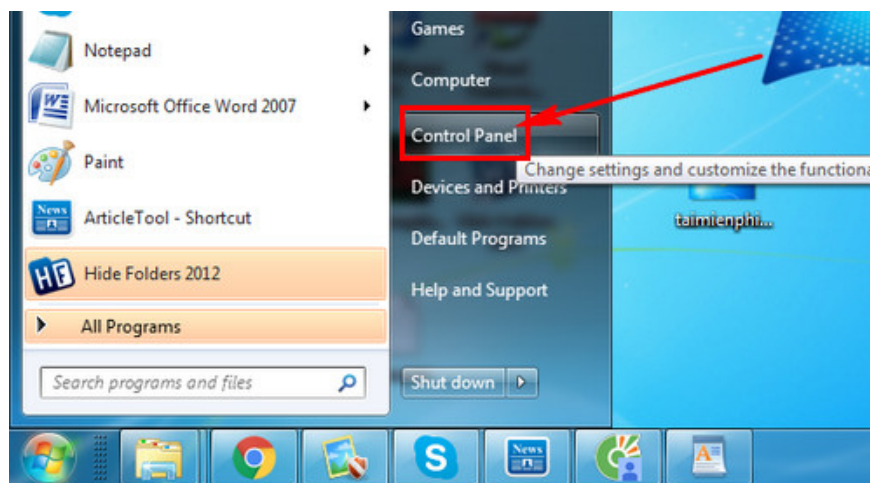
How to prevent your computer from automatically disconnecting your USB devices.

Leaving a USB drive plugged into a computer for too long can sometimes cause the computer to automatically disconnect it. It's incredibly frustrating when you're copying several gigabytes of data and the computer suddenly disconnects the USB drive, right? Therefore, blocking automatic USB disconnection is a good way to prevent this from happening.

Automatic disconnection of USB devices is a common problem. It's frustrating when you're **copying data or files from a USB drive to your computer** or vice versa and this happens. In many cases, this automatic disconnection can cause files to be corrupted during the copying process, leading to file damage or preventing installation after the copying is complete. If you're **installing Windows 7 using a USB drive**, this can easily cause your computer to freeze or conflict with Windows. To use tricks like installing Windows 7 from a USB drive, or copying and receiving data between a USB drive and your computer, you should block your computer from automatically disconnecting your USB device. Detailed instructions on how to block your computer from automatically disconnecting your USB device will be in the following article; please refer to it.

How to prevent your computer from automatically disconnecting your USB devices:

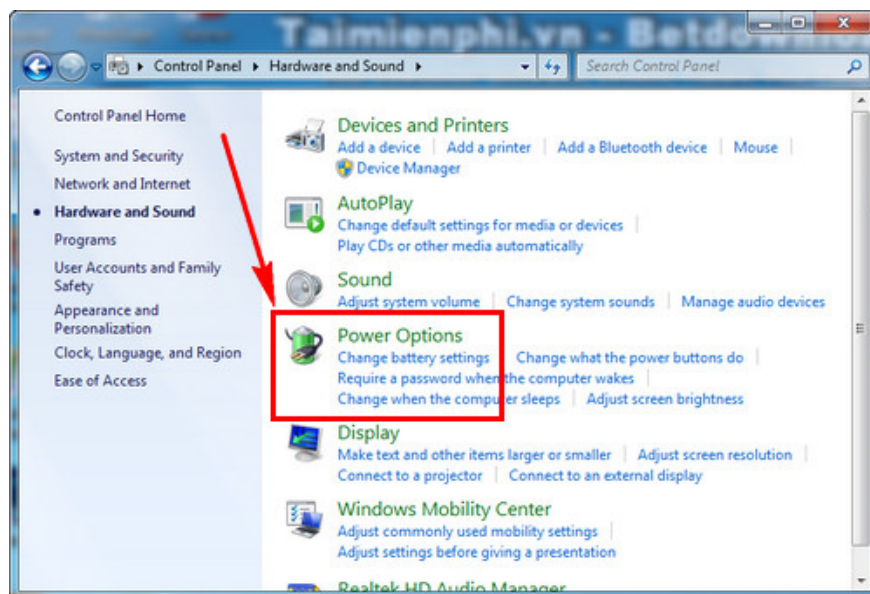
Step 1: On the Desktop, press **Start** or **the Windows key** and select **Control Panel**.



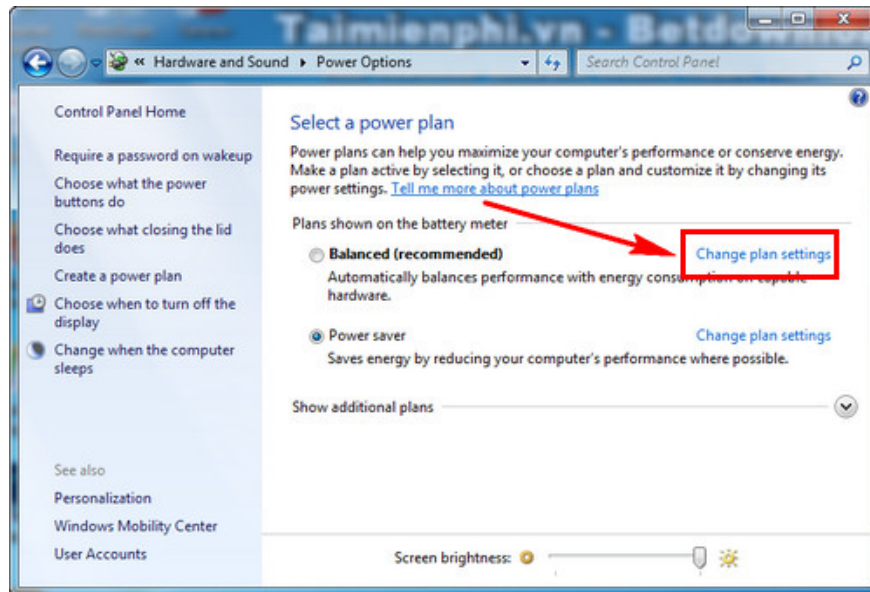
Step 2: Select **Hardware and Sound**.



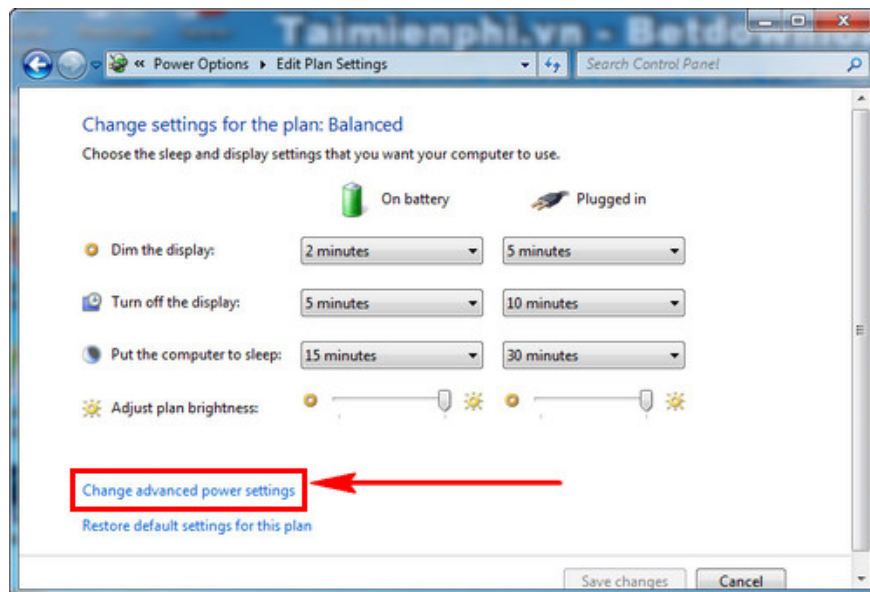
Step 3: Here, pay attention to the battery capacity and charging port icons. Select **Power Options**.



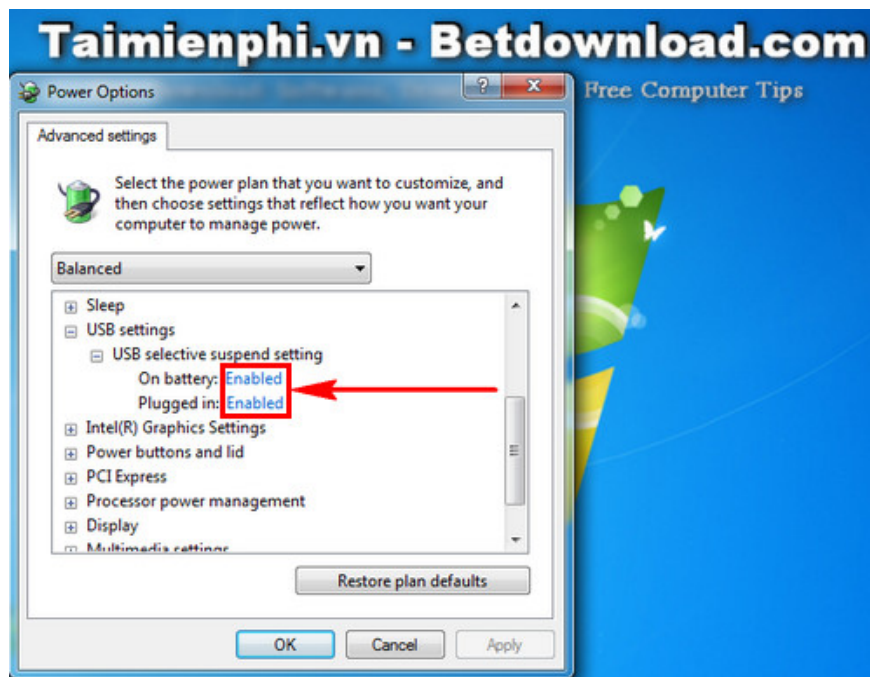
Step 4: In the **Balanced** section , select **Change plan settings**.



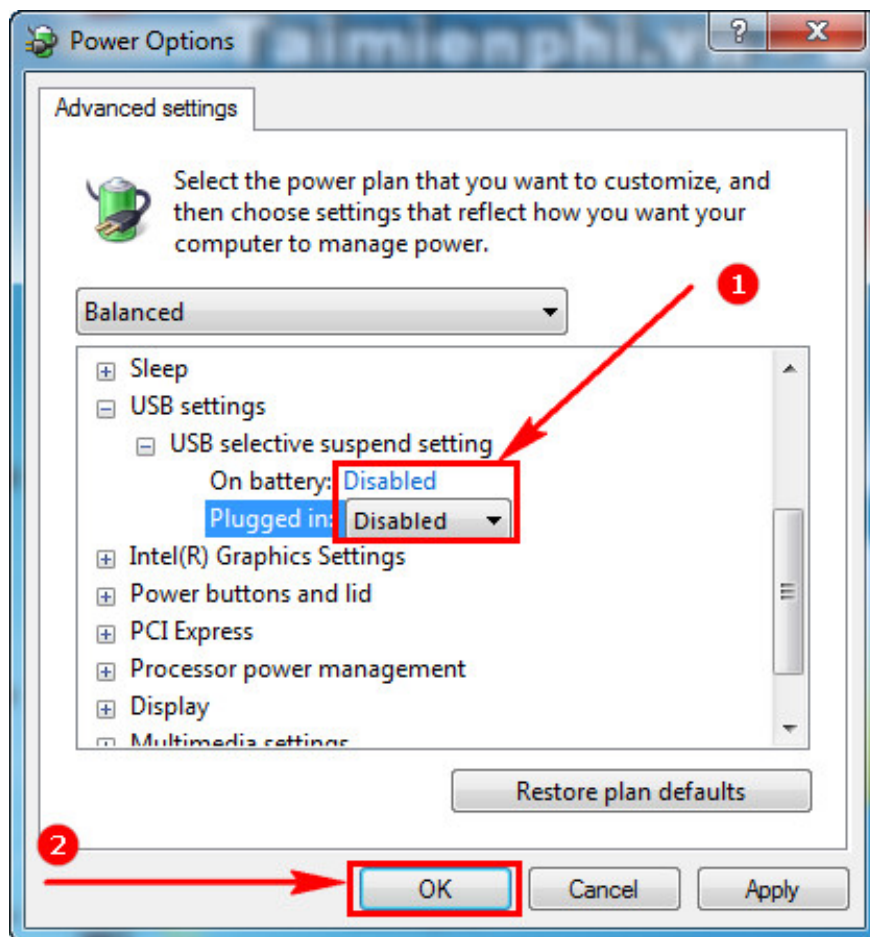
Step 5: Continue by selecting **Change advanced power settings**.



Step 6: At this step, the **Power Options** dialog box appears. Find the **USB Settings** section . Click on it and you will see the **USB selective suspend setting** , and both battery and charging modes are currently enabled .



Step 7: Click on Enabled and change it back to **Disabled** to prevent the computer from automatically disconnecting your USB device. Finally, click **Apply** > **OK** to save the changes.



After performing this procedure, you have successfully prevented your computer from automatically disconnecting your USB device. Users no longer need to worry about their USB device being automatically disconnected while transferring data.

Older computers and laptops without USB 3.0 often experience slow file copying between USB drives and computers. If you only have USB 2.0 ports, you should use the TeraCopy file copying trick to speed up data transfer, especially when copying large files of several GB. This method isn't limited to large files; you can use TeraCopy in any situation, for copying files to USB drives, phones, or memory cards. After installing TeraCopy on your computer, the software integrates the file copying feature directly into the right-click interface; you simply right-click the file and select "Use TeraCopy" to transfer the data.

Another common problem for USB users is that the USB drive won't let you copy files larger than 4GB. This makes it very difficult to copy large data, such as .iso files for installing Windows. If you encounter this situation, fix the USB drive error immediately by following TipsMake's instructions. We hope these tips about USB drives will help you copy files and transfer data quickly on your USB drive.

You finished reading the article "**How to prevent your computer from automatically disconnecting your USB devices.**" edited by the [TipsMake](#) team. We hope this article has provided you with many useful tech tips and tricks. You can search for similar articles on tips and guides. Thank you for reading and for following us regularly.