

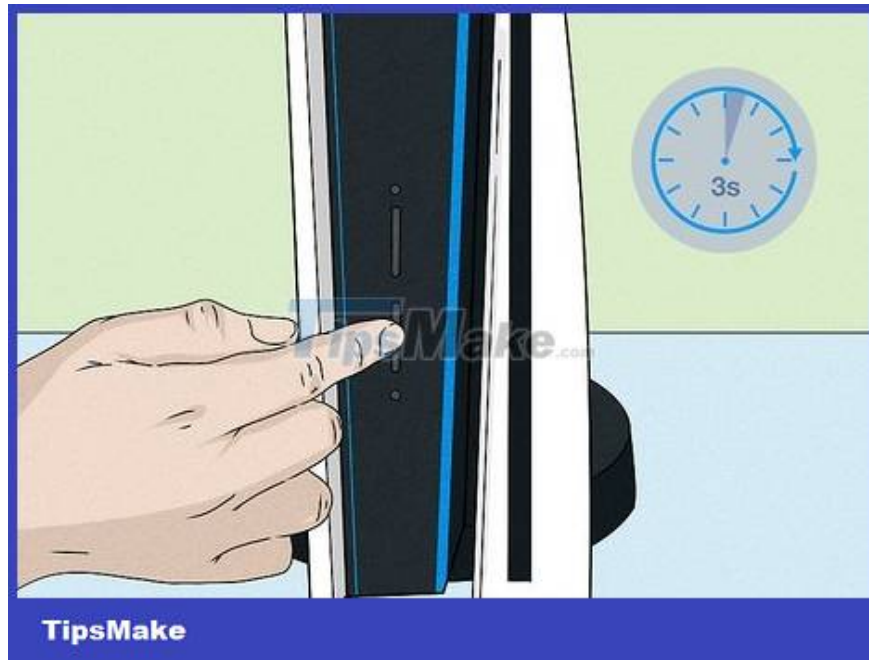
How to Power Off a PS5

You've just finished playing a game on your new PS5 and are about to turn it off, but you can't find the power button on your console or controller. In fact, there are two different methods to power off the PS5: turning it off directly on the console, or conducting it remotely via the buttons on the controller. TipsMake today will guide you both ways, you can refer and choose the most convenient way.

Turn off the power directly from the game console



Find the power button. The PS5 console has a power button, but due to its discrete design, you won't immediately see it at first glance. Below the vertical black stripe on the console, there are two thin black buttons. The button below will be the power button.



Hold down the power button. Proceed to hold the button for about three seconds until you hear two beeps.

You need to wait for the second beep to sound; If only one beep is heard, the PS5 is going into sleep mode instead of shutting down.

Power off with gamepad



Find the PS5 button. The PS5 button has the same shape as the PlayStation logo and is located between two thumbsticks.



Press the PS5 button. When you press the PS5 button, a menu will appear at the bottom of the screen. Select the source icon on the far right.



Select 'Turn Off PS5' from within the power menu. Finally, select 'Turn Off PS5' from the options that appear.

You finished reading the article "**How to Power Off a PS5**" edited by the [TipsMake](#) team. We hope this article has provided you with many useful tech tips and tricks. You can search for similar articles on tips and guides. Thank you for reading and for following us regularly.