

How to play the game handle in the browser

You want to play classic handle games on a web browser, just a few clicks are done.

Gamers certainly cannot know the classic game titles, such as Pac-Man, Mortal Kombat, etc. from many famous game companies. And to relive that vibrant space right on your computer, the world-renowned Internet Archive data store has updated its collection catalog with more than 60 versions that simulate classic handle games, let players experience on the browser like Chrome, Firefox, Opera, .

Coming to the Internet Archive you will meet very familiar games again, and the number of games will continue to be updated according to the announcement from this project developer. Let's join the Network Administrator to enter the world of handheld games in the article below.

1. Top 10 best handheld game consoles
2. How to connect the PS3 handle to the computer
3. How to connect and use the PS4 handle on the computer

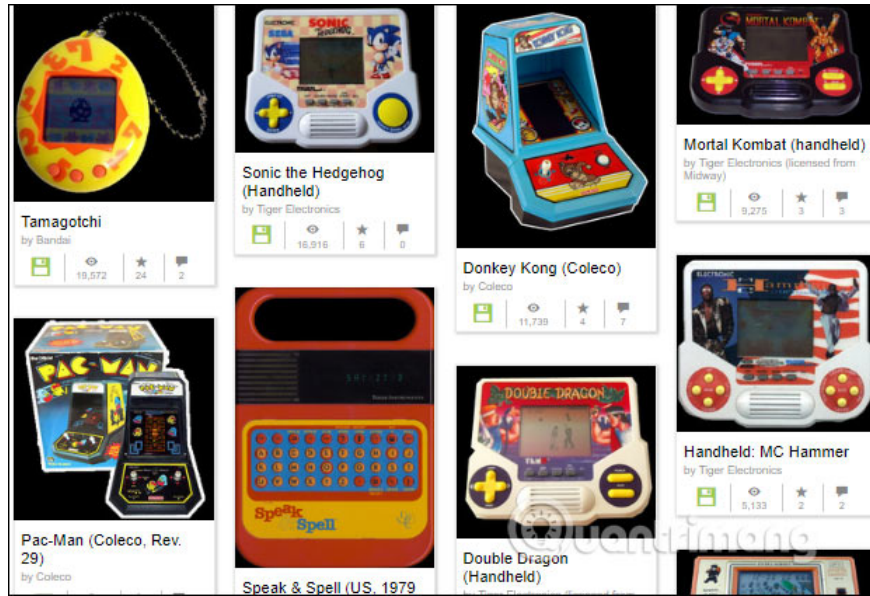
Instructions on how to play the game on the browser

Step 1:

Users access the link below to access the Internet Archive archive.

1. <https://archive.org/details/handheldhistory>


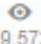


In the page interface the player will see all the classic game handles collected and simulated from the developer.




On the left side of the screen are game classification items if you want to quickly find a game or game genre.


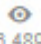


<input type="checkbox"/>	1997	1
<input type="checkbox"/>	1996	1
<input type="checkbox"/>	1995	5
<input type="checkbox"/>	1994	1
<input type="checkbox"/>	1993	4
<input checked="" type="checkbox"/>	1992	2
More ▶		
Topics & Subjects ⌨ Aa		
<input type="checkbox"/>	Donkey Kong Clone	1
<input checked="" type="checkbox"/>	LCD game	1
<input type="checkbox"/>	Tandy Game	1
<input type="checkbox"/>	Tomy Electronics	1
Collection		
<input type="checkbox"/>	Handheld History	74
<input type="checkbox"/>	crocojim18 Favorites	4
<input type="checkbox"/>	JWaughtal Favorites	4
<input type="checkbox"/>	churchmonkey Favorites	3
<input type="checkbox"/>	Juan Elías Fernández Favorites	3
<input type="checkbox"/>	maxpower2000 Favorites	3
More ▶		

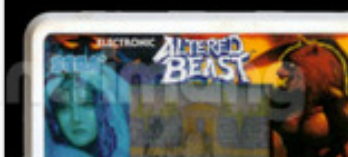
by Bandai

 |  19,572 |  24 |  2



Speak & Spell (US, 1979 Version)
by Texas Instruments

 |  6,489 |  17 |  1

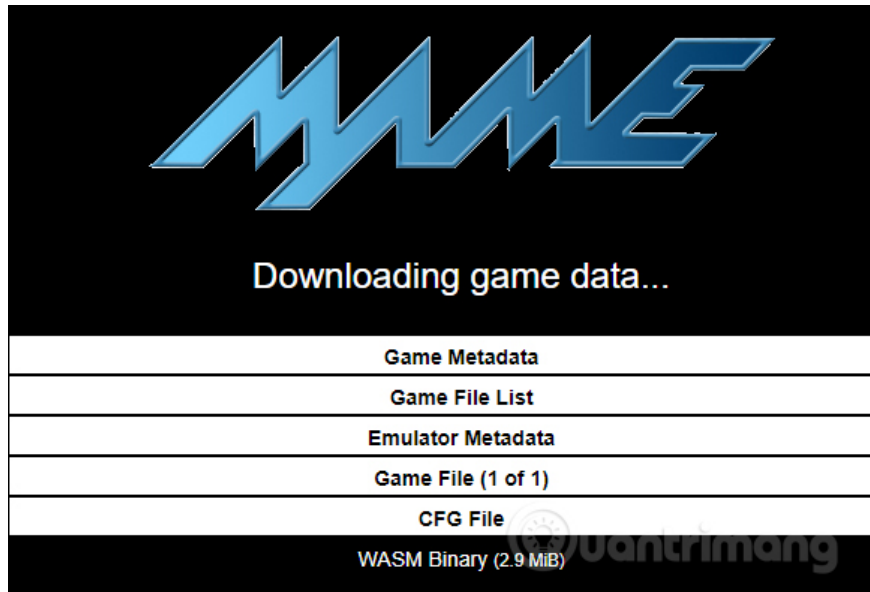


Step 2:

Click on a game to try it out. At the game interface are information about the production year, game author and the main content of the game. Click **Click to Begin** to play the game.



Next, the website will proceed to load game data.



Step 3:

After loading the game data, we will enter the interface to play the game. Below **the Keys section** are the keyboard combinations to control the player character. Each game will have different press keys.

Publication date [1997](#)

Keys:

Button 1: Left CTRL Key
Button 2: Left ALT Key
Button 3: Spacebar

The Tamagotchi (たまごっち) [tamagot^ち] is a handheld digital pet, created in Japan by Aki Yokoi (ja) of WIZ and Aki Maita of Bandai. It was released by Bandai on November 23, 1996 in Japan and May 1997 in the rest of the world, quickly becoming one of the biggest toy fads of the 1990s and early 2000s. As of 2010, over 76 million Tamagotchis have been sold world-wide. Tamagotchi are housed in a small egg-shaped computer with an interface usually consisting of buttons, although the number of buttons may vary.

According to Bandai, the name is a portmanteau combining the two Japanese words tamago

Players need to remember these scrolling keys to use while playing the game. Regarding the game content, each game screen of gamers also has a fixed network number. If the end of the game is synonymous with losing.

 **Sonic the Hedgehog (Handheld)**
by [Tiger Electronics](#)

Publication date [1992](#)

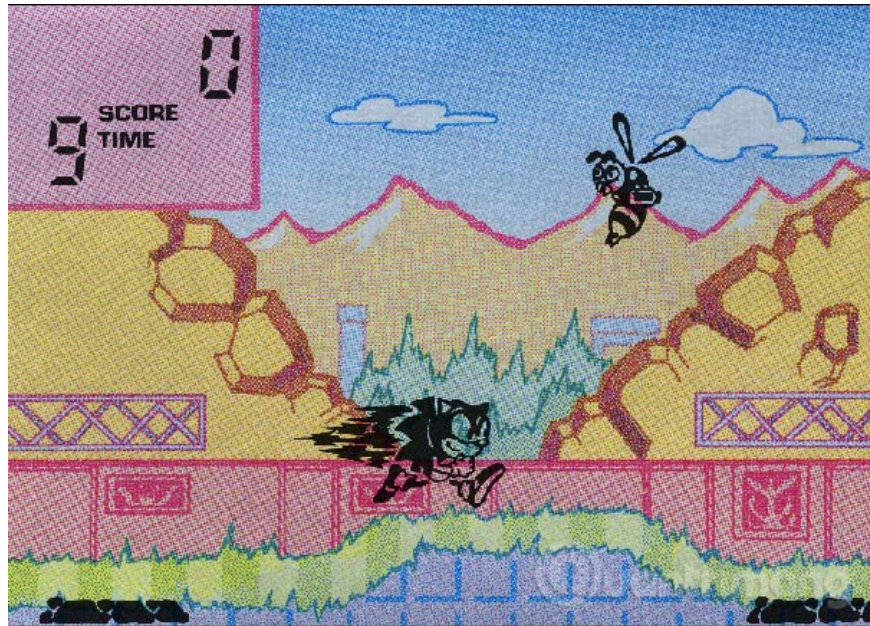
Keys:

Power on: 1
Movement: Arrow Keys
Action: Left CTRL Key

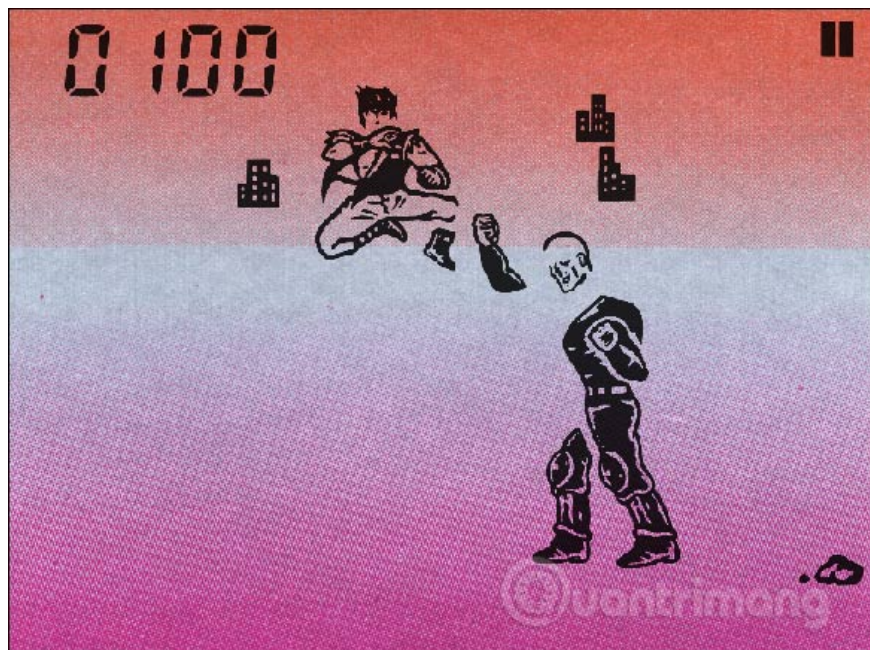
Emulator [tsonic](#)
Emulator_ext zip
Identifier [hh_tsonic](#)

Step 4:

The gaming interface will look like the following. The game interface is more colorful when playing on the controller but still retains the classic features of these game titles. In the right corner is the option to enlarge the screen and turn the game sound on or off.



The sound of these classic games remains the same, creating a feeling of familiarity for gamers. The score will show clearly on the screen. Note that during the game, there is no Pause button to stop the game.



The Internet Archive brings to the world an exciting hand-held game machine for players. The image and color of the game is changed a lot to bring new emotions, much more eye-catching interface. The games work well on current browsers like Chrome, Firefox, so you can enjoy it.

See more:

1. How to set up the Xbox One gaming console on Windows 10
2. 8 best PSP - Play Station Portable emulator software for Android
3. 10 best software emulators for gaming consoles

Wish you all have fun playing games!

You finished reading the article "**How to play the game handle in the browser**" edited by the [TipsMake](#) team. We hope this article has provided you with many useful tech tips and tricks. You can search for similar articles on tips and guides. Thank you for reading and for following us regularly.
