

How to Play SkyBlock in Minecraft

SkyBlock is a popular survival game style in Minecraft that has been known to many people since its launch. This type of gameplay requires you to undertake the difficult task of trying to survive on a block in the sky with extremely scarce resources. Thanks to SkyBlock, many players have gained more experience and skills in the art of survival in Minecraft. You can also discover and experience the same thing yourself by reading this article.

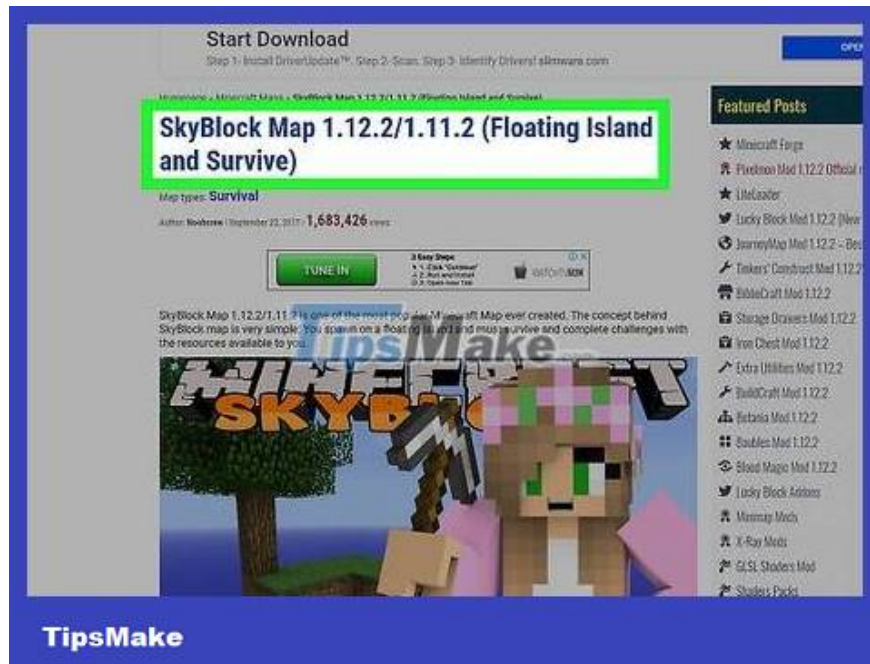
Install and download SkyBlock map (in Singleplayer mode)



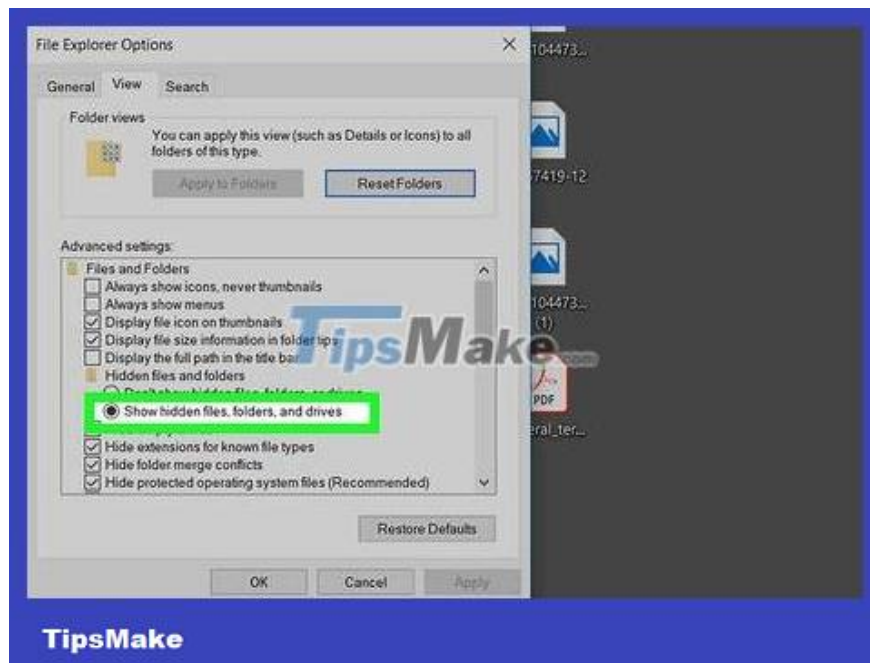
Search SkyBlock map. Go to <https://www.google.com> and type skyblock map in the search bar to find sites with the latest versions of SkyBlock maps. Some websites with SkyBlock maps include:

<https://www.planetminecraft.com/project/classic-skyblock-map-for-minecraft-1-14/>

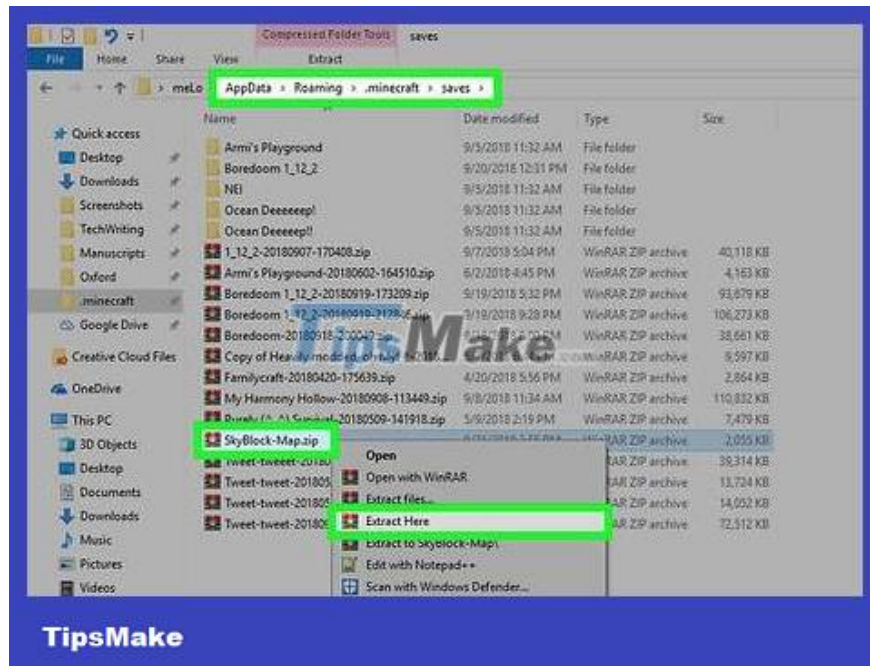
<http://www.minecraftmaps.com/skyblock-maps>



Download the SkyBlock map. When you find the SkyBlock map you want to download, click the Download button to download the zip file containing the map.



Show hidden files and folders (Windows only). In Windows, you may need to show hidden files and folders to get to Minecraft's save folder.



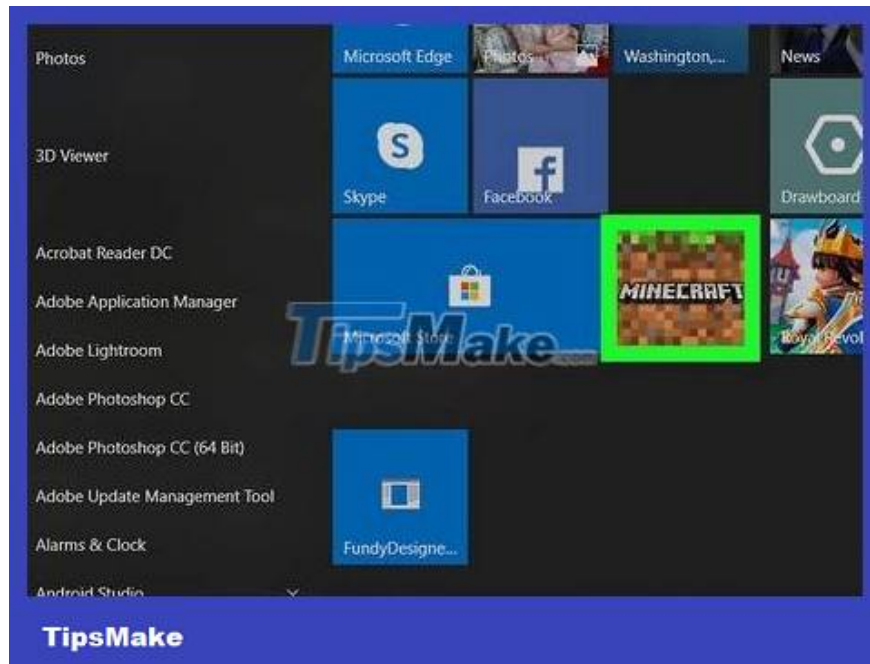
Extract the map file into Minecraft's save folder. Use an unzip application like Winzip, WinRAR or 7-Zip to extract the folder in the zip file. Unzip the entire folder into Minecraft's save folder. Minecraft's save folder will be located in the following location depending on the operating system and version of Minecraft you are playing (folder " " is the real name of a Windows, MacOS, or Linux user).

Java Edition version on Windows 10: C: Users AppData Roaming .minecraft saves

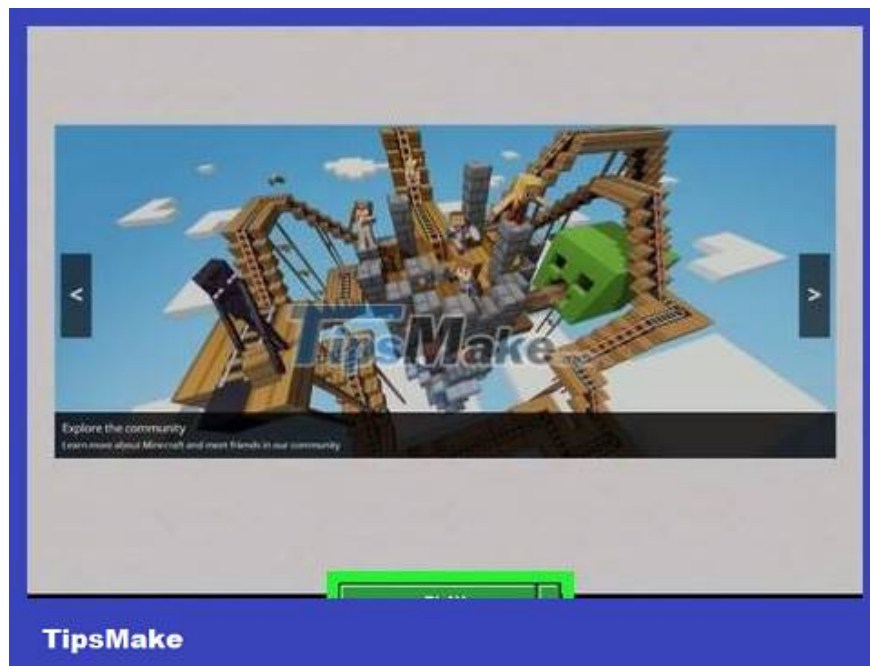
Windows 10 (Bedrock) Edition: C:Users AppData Local Packages Microsoft.MinecraftUWP_8wekyb3d8bbwe LocalState games com.mojang minecraftWorlds

Java Edition on Mac: Users / /library /application support /minecraft /saves

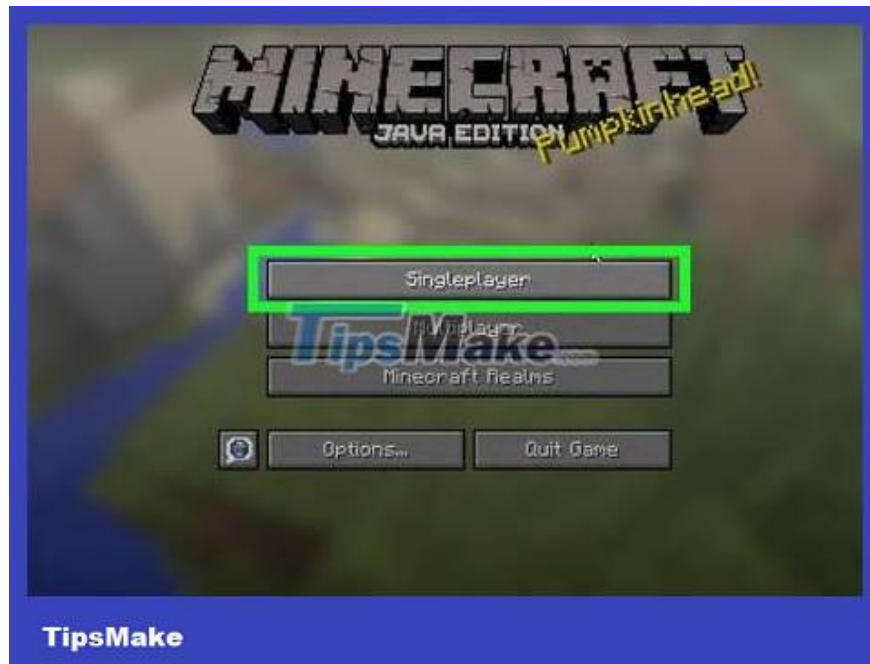
Java Edition on Linux: /home/ /.minecraft /saves/



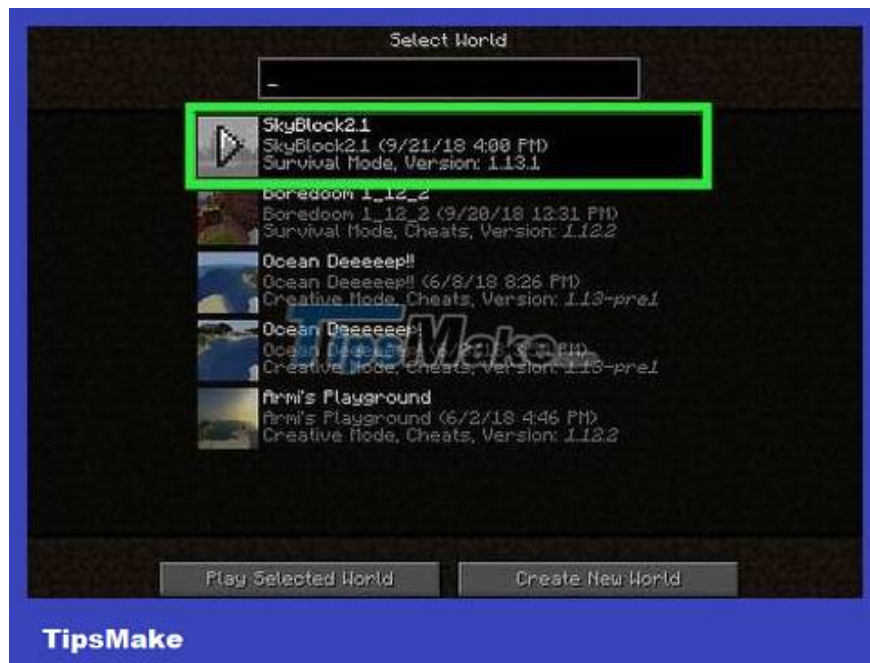
Open Minecraft. Click the Minecraft Launcher (in Java Edition) or the Minecraft icon (in Windows 10 Edition) to open Minecraft. If you don't see it on the Desktop, click the icon in the Windows Start menu, or the Applications folder on Mac.



Click Play . This green button is located at the bottom of Minecraft Launcher or the large gray button in the screen that appears when first playing Minecraft Windows 10 Edition.

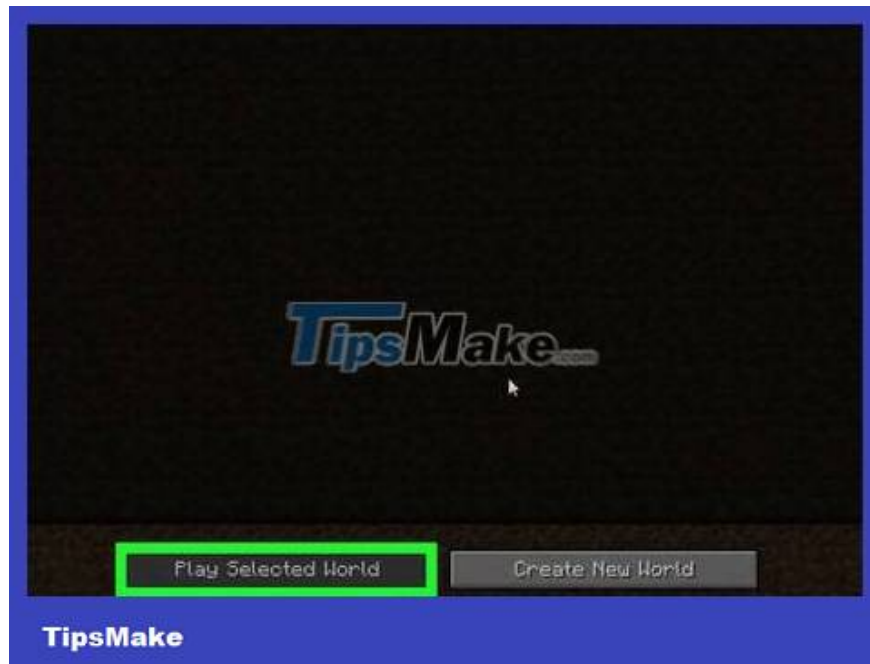


Click Single Player (Java Edition only). In Java Edition of Minecraft, click **Singleplayer** to display a list of single-player maps.



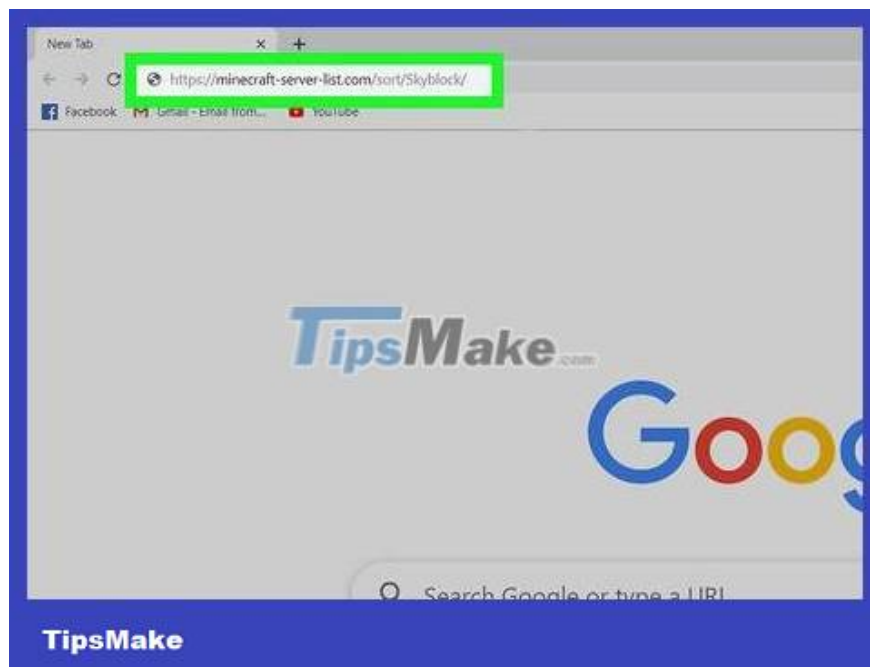
Click on the SkyBlock map. Once the map is copied to the saves folder, it will appear in Minecraft's saves list. Click on the SkyBlock map to download.

Some maps created in Java Edition may not be playable in Windows 10 (Bedrock) Edition and vice versa.



Click Play Selected World (Java Edition only). If you're playing Minecraft Java Edition, click **Play Selected World** .

Connect to SkyBlock server (in Multiplayer mode)



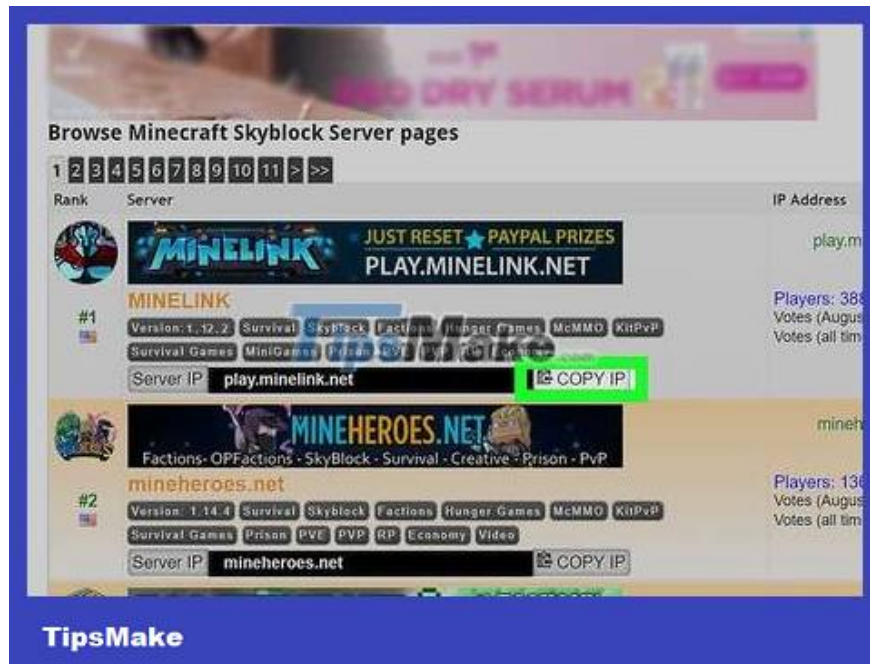
Search for Minecraft's SkyBlock server. Go to <https://www.google.com> and search by keyword **Minecraft Skyblock server**. You will see many websites containing a list of SkyBlock servers. If you are playing Windows 10 (Bedrock) Edition, type **Windows 10** or **Bedrock** in the search box. You will see many websites containing Minecraft server lists. Some servers include:

<https://minecraft-server-list.com/sort/Skyblock/> (Java Edition version)

<https://topminecraftservers.org/type/Skyblock> (Java Edition version)

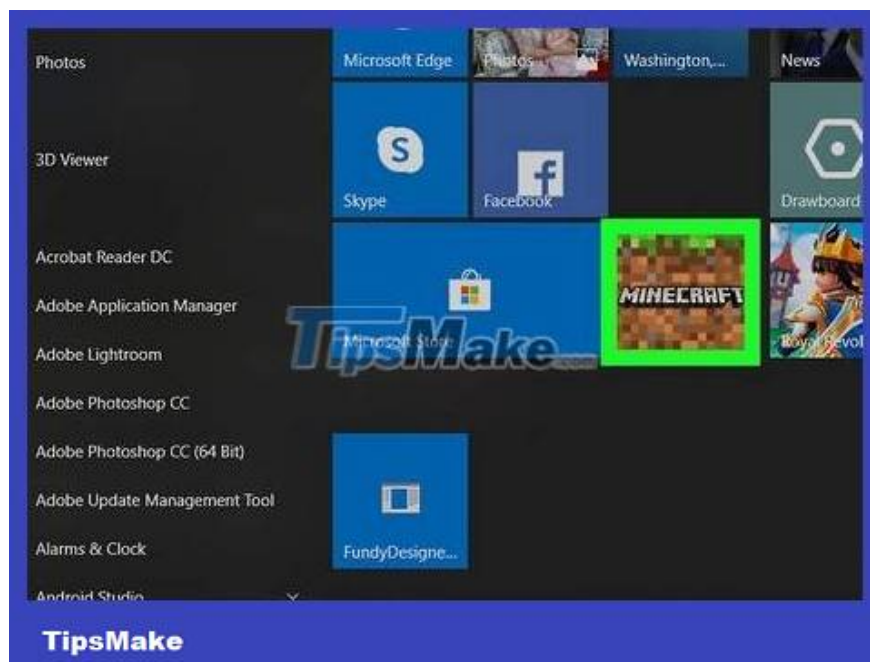
<https://minecraftservers.org/type/skyblock> (Java Edition version)

<https://minecraftpocket-servers.com/tag/skyblock/> (Bedrock Edition)

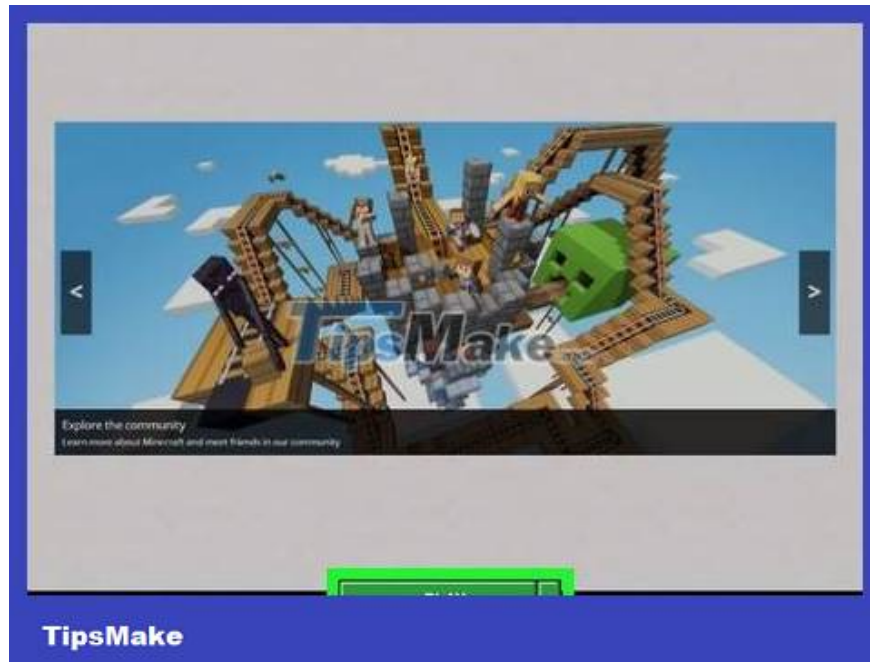


Click the Copy button below the server you want to add. Most websites that list servers have a "Copy" button below each server in the list. When you click this button, the server's address will be copied.

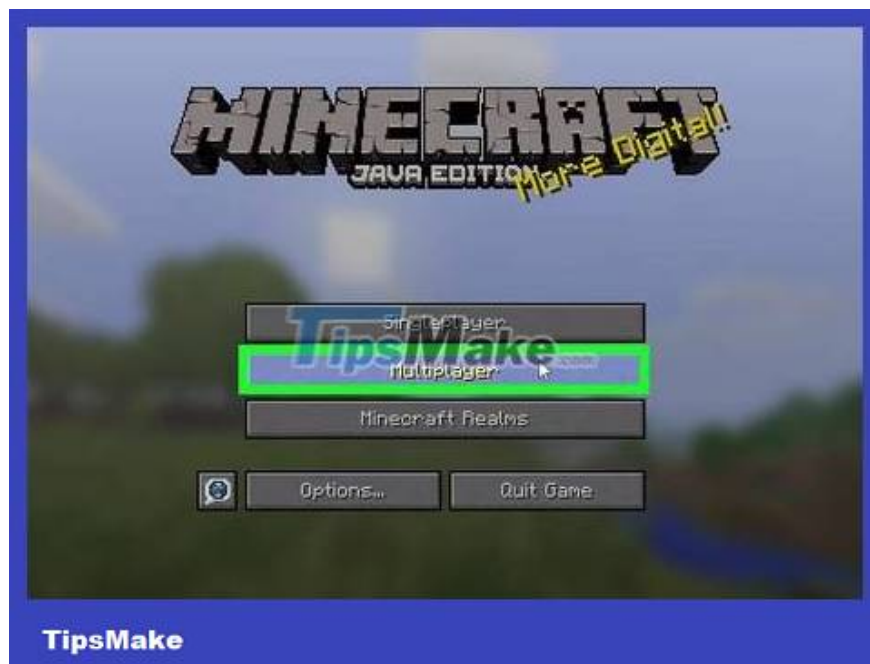
For Windows 10 Edition of Minecraft, you need to copy the server address, click on the word Server and write down the port number.



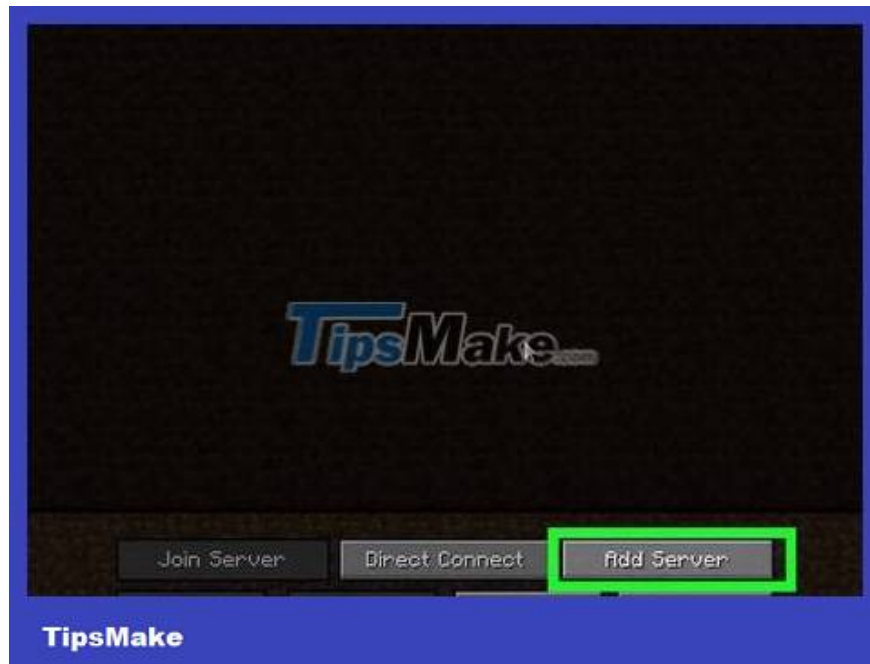
Open Minecraft. Click the Minecraft Launcher (in Java Edition of Minecraft) or the Minecraft icon (in Windows 10 Edition of Minecraft). If you don't see it on the Desktop, click it in the Windows Start menu, or the Applications folder on Mac.



Click Play . This green button is located at the bottom of Minecraft Launcher or the large gray button in the screen that appears when first playing Minecraft Windows 10 Edition.



Click Multiplayer or Servers . If you're playing Minecraft Java Edition, click **Multiplayer** . If you're playing Windows 10 Edition, click **Servers** .



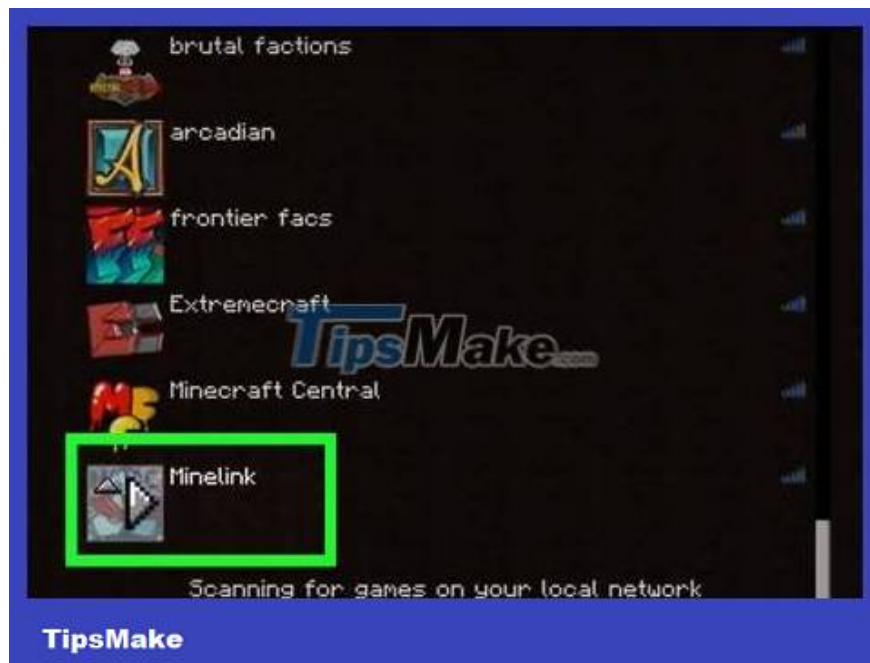
Click Add Server . In Minecraft Java Edition, this button is in the lower right corner of the Multiplayer menu. In Minecraft Windows 10 Edition, this button is at the top of the server list.



Add server information. Type the name of the server in the "Server name" field. Paste the address you copied into the "Server address" field. In Minecraft Windows 10 Edition, you also need to enter the port number in the "Port" field.



Click Save or Done . This is the step to save the server to your server list. If you are playing Windows 10 Edition, click **Save** . If you are playing Java Edition, click **Done** .



Click on the Minecraft server you just added. This is the step to download the game style on the server. You'll likely see an interface containing multiple playstyles, tutorials, and other players.



Locate the SkyBlock playstyle. The servers will have different interfaces. Some servers have other types of play besides SkyBlock. Look for SkyBlock. It could be a villager writing "SkyBlock", a "SkyBlock" gate, or a wall with instructions on how to start playing.



Follow the instructions. Follow all on-screen instructions to start playing SkyBlock. Instructions will vary depending on the server. Normally, you can type the command line to start a new SkyBlock game on the island or join an ongoing game. Click T to open the command line interface. After typing the command line in the instruction list, you will start playing on the new SkyBlock island.

Play SkyBlock



Use "Sneak" mode to avoid falling off the edge. Hold down the Shift key while moving around to enter "Sneak" mode.



Collect saplings from the first tree. No buds = no more plants, so if you don't collect at least one bud from the first plant, you'll have to start over. Loosen the leaves of the first plant to collect the buds.



Collect wood from the first tree. Once you have collected a few shoots from the leaves, use your hands to pound the wood from the plant.



Plant the bud on the block of land farthest from the spawn point. This keeps the tree away from the lava and prevents losing the tree (and even apples and buds) to a fire later on.

You can increase your chances of picking up a bud by using a few blocks of dirt from the top layer to extend the base around the bottom of the tree.



Collect wood and buds every time the tree grows. When the buds grow, collect the buds from the leaves, then get the wood. Next is to replant the shoots you have collected.



Make a workbench. Once you have enough wood, make a crafting table.

Remember to save two wooden blocks (don't turn them into wooden planks) to later create the first charcoal.



Making wooden pickaxes. Use some wood to craft wooden plank blocks and sticks by hand. Then use the crafting table to create a wooden pickaxe.



Create a 2X2 water tank. You can craft a tank from two ice blocks in the reserve chest. You should have enough dirt to create a 2x2 tank, but you can use a board block on the edge of the tank furthest from the lava if necessary. This is the step that creates an endless source of water because every bucket scooping water from this tank is automatically filled.



Creates a cobblestone generator. One of the simplest ways is to dig a hole 4 blocks long and a second hole 2 blocks deep. Now pour a bucket of water into the 2 block deep hole and lava on the other side.

To create a basic cobblestone generator, follow this formula (D=Ground, N=Water, K=Space, D=Lava):

D-NKKD-D

D-K-D-D-K-D

Another way to create a more complex generator can be done as follows: (D=Land Blocks, K=Void Blocks, C=Cobblestone Blocks, N=Water and D=Lava)

KKNCDD

D-NN-D-K-D

D-D-D-D-D-D



Manufacturing fishing rods. Use the stick and some string in the spare chest to make a fishing rod. With a fishing rod and furnace, you can rest assured that you will always be full while waiting for your garden to harvest.



Continue generating and harvesting cobblestone. Once you have a certain amount of cobblestone, expand to the bottom area of the island and collect dirt, but don't touch the cobblestone generator.

If you craft a cobblestone slab, you can double the surface area compared to using the same amount of raw materials. This way of making cobblestone also has the advantage of preventing monsters from respawning in dimly lit areas.

You only have a limited amount of land blocks. One way to avoid losing ground blocks is to create a platform or "tray" under your sky blocks to catch anything that falls.

You can do this by digging a one-block hole in the cobblestone and pouring in a bucket of water, creating a waterfall that you can swim down.

Dive down and place the 4 cobblestone blocks in a column/tower facing down. Swim back up to catch your breath, then dive into the water to place a block in each corner of the column at the bottom of the column, just below the original hole. then swim back up.

Jump out of the water and use the bucket to get water.

Place the ladder and climb down to the bottom of the corner block you placed and build/expand a lower level or "tray" 4 blocks below the original sky block.

Expand the "tray" below the main floor. This area can be left dark to create monsters or lit to deter monsters depending on the player's preference.



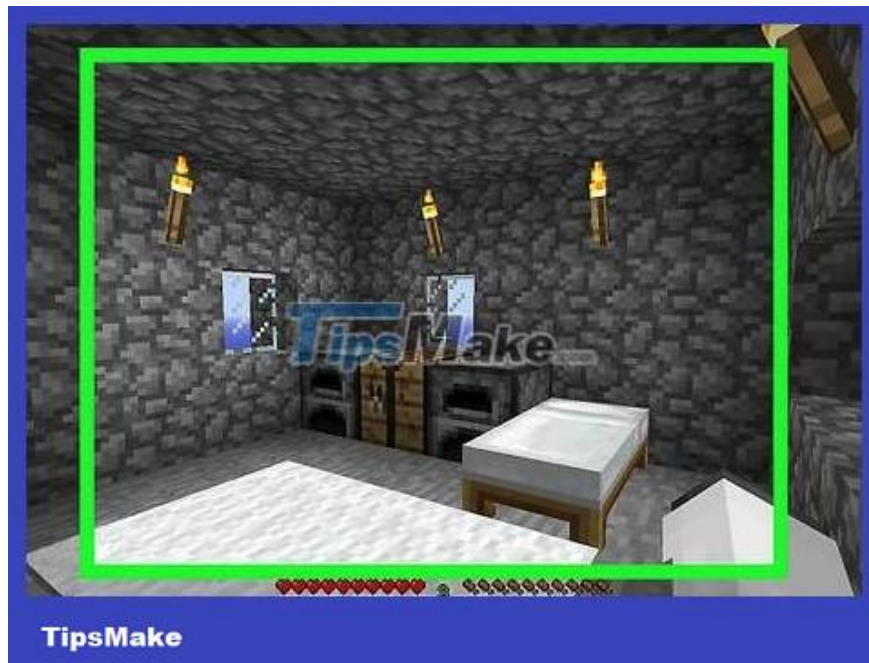
Consider creating a mob spawner. You can do this by building a background with no light. If you do so, you can pick up many things monsters drop, such as fibers, bones (bone meal for gardening), specialized tools, etc.

Because there is no iron, you cannot use a hopper. Instead, you just need to run along the edge and pick up the fallen items yourself.



TipsMake

Consider creating a "pasture" lawn. The lawn should be located 24 blocks away from your main building area to produce animals for food and other resources.



TipsMake

Play your own way. What to do next is up to you. You can expand the house, create a more efficient monster generator, create a large monster farm. there are endless things you can do. The SkyBlock game will end when you have overcome all the challenges, or cannot progress further without cheating.

You finished reading the article "**How to Play SkyBlock in Minecraft**" edited by the [TipsMake](#) team. We hope this article has provided you with many useful tech tips and tricks. You can search for similar articles on tips and guides. Thank you for reading and for following us regularly.
