

How to Play PS1 Emulator on PC

Hoang Ha PC will guide you to use the best emulator software on PS1, ePSXe, so you can play all old PS1 games, without having to find PS1 products again.

The best emulator for playing PS1: ePSXe.

Currently on the market there are many PlayStation 1 emulators, the most prominent of which is ePSXe, a software for Windows operating system. With ePSXe you can experience almost all PS1 game titles that have been released. The advantage of ePSXe is simple installation, configuration, adding additional control keys or controllers, adding speakers or headphones to experience it like experiencing a real PS1 machine is really easy.



ePSXe is a PlayStation 1 emulator for Windows operating system. With ePSXe on PC, you can play most PS1 games. This is the best PS1 emulator on PC today that 8x, 9x gamers need to have on their computers. Your job after installing ePSXe is to configure and add control keys and sounds to be able to use it. In addition, this emulator can also upgrade the game's graphics to be many times more beautiful than the original version.

Brief introduction to PS1

For gamers born in the 80s and 90s, the name Playstation or PS1 is not strange. PS1 was produced in Japan in 1994 and released by Sony. With a good price and quality exclusive games, Playstation dominated the Console segment.

Playstation has now reached its 5th version, however, the famous games on PS1 in the past such as Animal Arena, Animal Racing, Chicken Racing, Black Dragon,. There are still many people in the world playing, setting new records for the game.

So ePSXe was launched to help you satisfy those old games without having to hunt for machines or game discs that are more than 25 years old.



Complete instructions for installing ePSXe software on PC:

Essentials for ePSXe Experience

Of course the first thing you need is a desktop computer, or a laptop is fine too.

Then you download the ePSXe browser on your PC [here](#)

Bios to boot PS1 games [here](#)

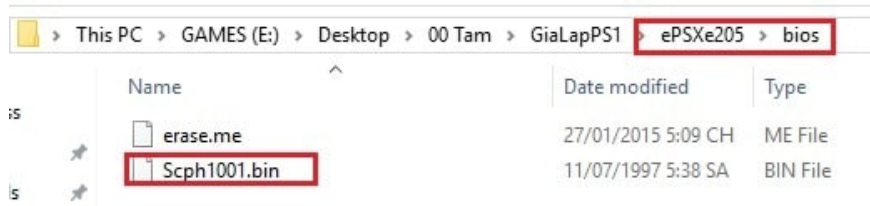
ePSXe Plugins, used to configure PC, download [here](#).

Instructions for installing ePSXe on PC:

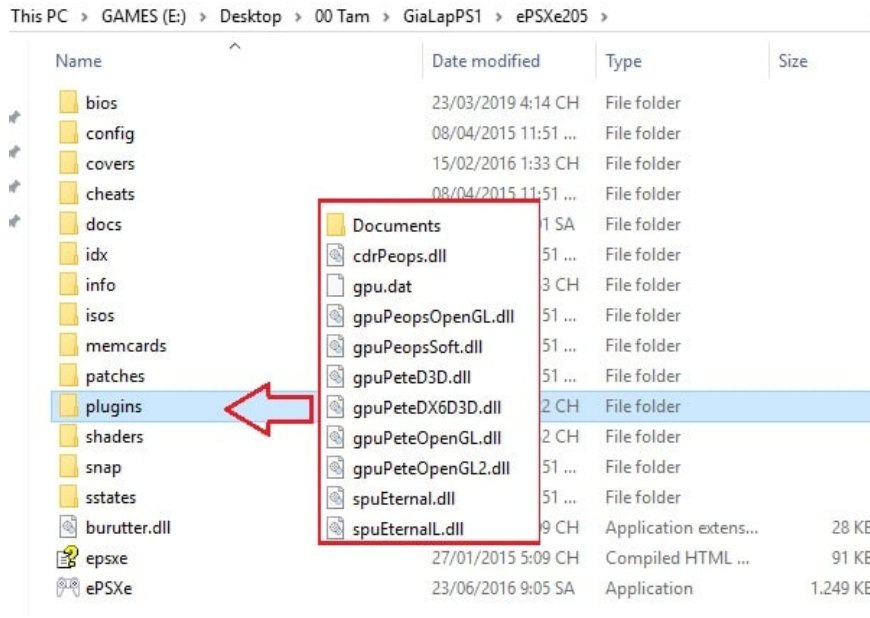
After you have downloaded all the links above, put them in a fixed file folder and unzip as shown in the picture:

Name	Date modified	Type	Size
epsxe_plugins	23/03/2019 3:41 CH	File folder	
ePSXe205	23/03/2019 3:41 CH	File folder	
ps1_bios	23/03/2019 3:41 CH	File folder	
Chocobo Racing	23/03/2019 1:12 CH	WinRAR archive	198.684 KB
epsxe_plugins	23/03/2019 3:33 CH	WinRAR ZIP archive	1.429 KB
ePSXe205	23/03/2019 12:55 ...	WinRAR ZIP archive	1.350 KB
ps1_bios	23/03/2019 3:32 CH	WinRAR ZIP archive	237 KB

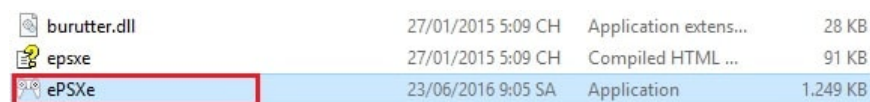
Then you copy the file 'Scph1001.bin' in the folder 'ps1_bios' to 'ePSXe205/ Bios'



The next step is similar to Copying files to Bios, we copy all the files in the 'epsxe_plugins' folder to the 'ePSXe205/ Plugins' folder



So you have completed part of the PS1 experience, next comes the part of installing the emulator's features to make it most complete. You will need to run the file 'ePSXe.exe' located in the folder 'ePSXE205'. The program will run and have an interface as shown below.

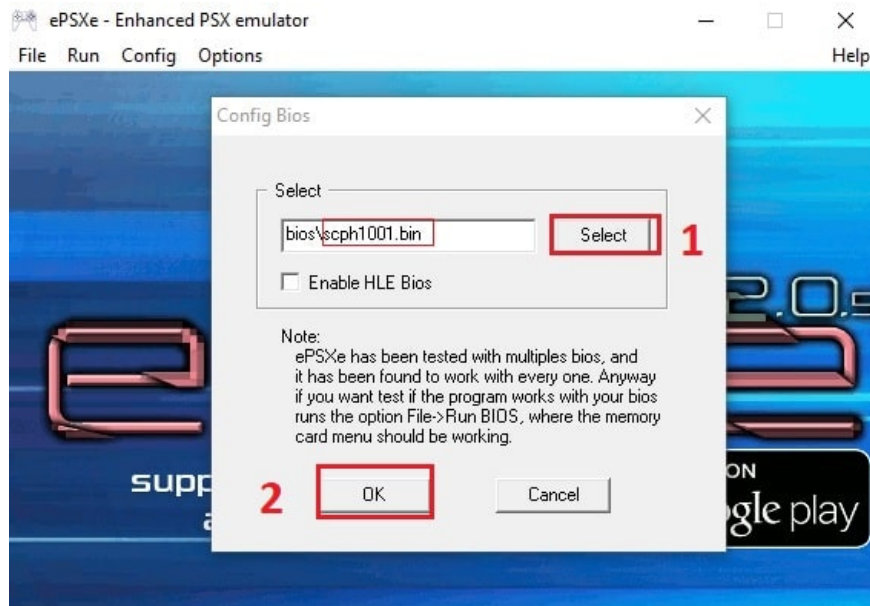




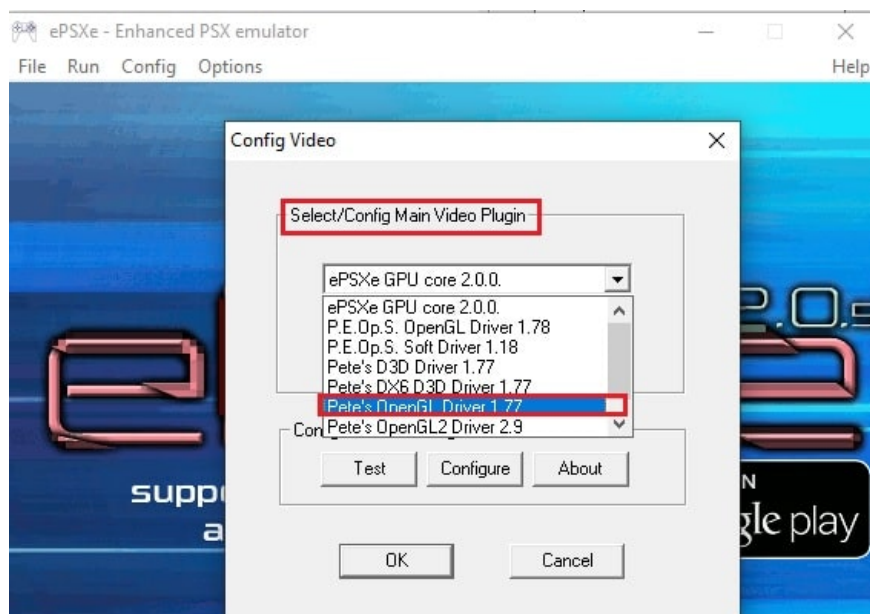
Next you will see the menu bar with different options, select 'Config'-> 'Bios'



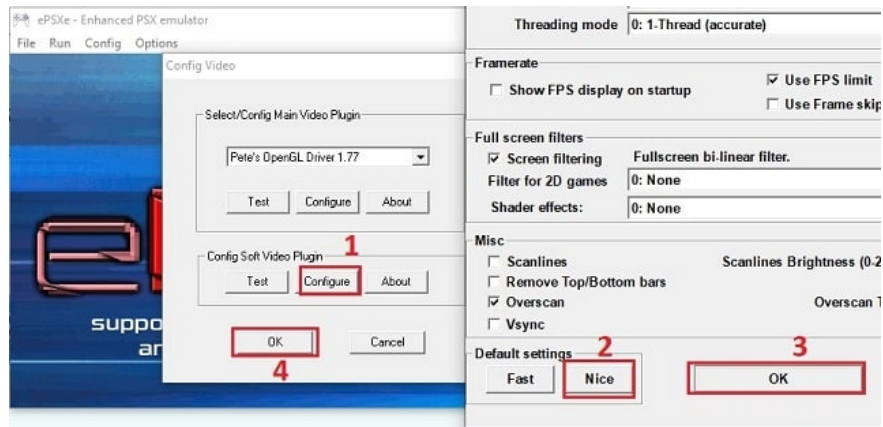
Then click 'Select', select the file 'Scph1001.bin' and click 'OK'



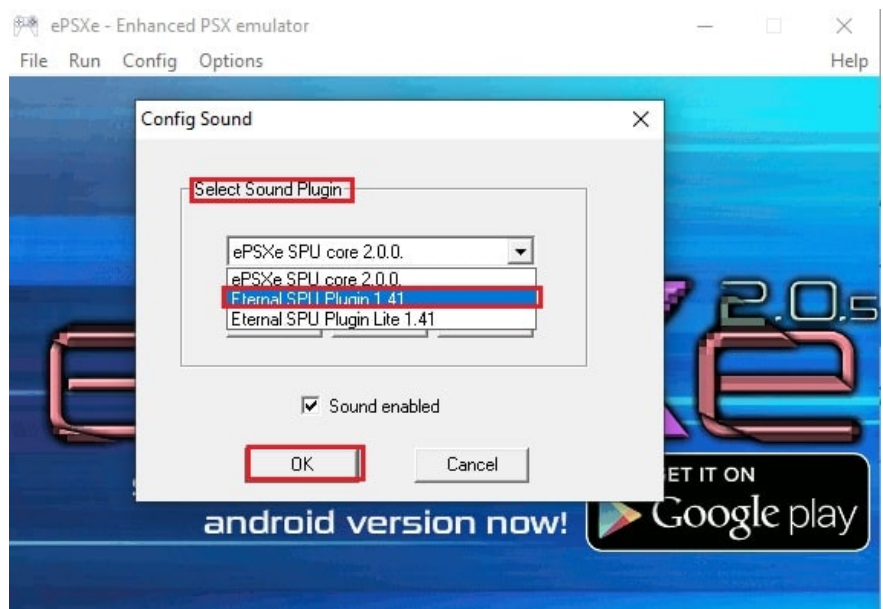
We go to Plugins Video, select Plugins Video, Select 'Config' on the menu bar, in the 'Plugins' section we click on 'Video'. In the 'Select/Config Main Video plugin' section, select 'Pete's OpenGL Driver 1.77'.



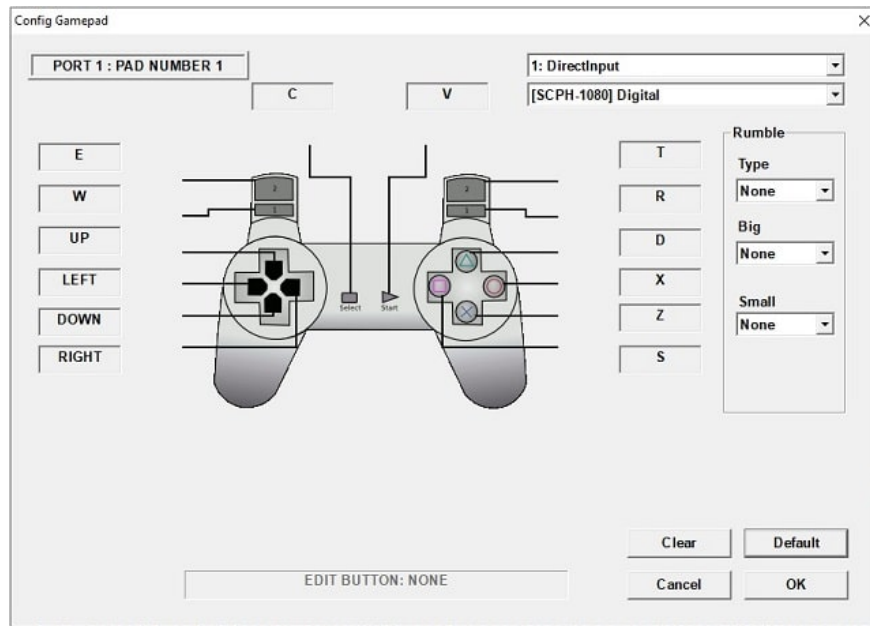
Next, click on 'Configure', the program will display the Video configuration interface, click on 'Nice'. Then click 'OK' to exit.



Then we go to the Audio section. Similar to the 2 installation steps above, we go to the menu 'Config' -> 'Plugins' -> 'Sound'. You will see the Config Sound interface appear. In the 'Select Sound plugin' section, select 'Eternal SPU plugin' then 'OK'.



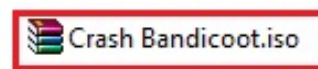
Now comes the final and extremely important step that will determine whether your gaming experience is enjoyable or not. You will go to 'Config' -> 'GamePads' -> 'Port 1' -> 'Pad 1' for the first controller, similar to 'Pad 2' for the second controller for your friend. What you need to do is adjust the buttons to suit you, then press 'OK' similarly for the controller for your friend, you also adjust the same.



The installation steps are complete, we will move on to the step of downloading the game on the ePSXe software that emulates PS1 on PC. Let's go!!

To download more than 2000 PS1 emulator games you can download [here](#)

After downloading, you unzip it and it will have ISO or BIN format. (As shown below)



To run the game, you will press 'File'-> 'Run ISO'. Select the .BIN file. Press 'Open' and enjoy the best PS1 emulator experience (Here I play Final Fantasy VII)

Picture 15 of How to Play PS1 Emulator on PC

Picture 16 of How to Play PS1 Emulator on PC



Summary

It can be said that the ePSXe emulator on PC is the perfect choice for users who love PS1 games, possessing smoothness, experience speed almost no different from the real machine but bringing better graphics and stable frames. This will definitely be the choice for those who want to experience the famous games of the past.

[Products:3744,3914,3919,3864,3866,3863,3860,3917]

You finished reading the article "**How to Play PS1 Emulator on PC**" edited by the [TipsMake](#) team. We hope this article has provided you with many useful tech tips and tricks. You can search for similar articles on tips and guides. Thank you for reading and for following us regularly.