

# How to play Pokemon GO on Windows computers

Recently, Pokemon GO has become a popular game, attracting thousands of gamers around the world. In previous posts Network Administrator has guided you on how to play Pokemon GO on Android devices and iOS devices. In the article below, Network Administrator will guide you how to play Pokemon GO on Windows computers using BlueStacks emulator software.

Recently, Pokemon GO has become a popular game, attracting thousands of gamers around the world. In previous posts, Network Administrator showed you how to play Pokemon GO on Android devices and iOS devices. In the article below, Network Administrator will guide you how to play Pokemon GO on Windows computers using BlueStacks emulator software.



## 1. All you need

To set up Pokemon GO on a Windows computer, all you need to do is set the tools below in the correct order.

First access and download the following tools to your device and install. With BlueStacks, Android emulator software for Windows, you download and install the Android APK file.

- Windows computer and Admin rights to install the software.
- BlueStacks, use BlueStacks version for Windows 7/8 or version for Windows 10.
- KingRoot, the root tool for Android devices.
- Lucky Patcher, a tool to edit permissions for applications.

- Fake GPS Pro, fool your location app. The Pro version costs \$ 5 on the Google Play Store. However, you can find the free APK file, note that the download process will be dangerous for you.

- Pokemon GO.

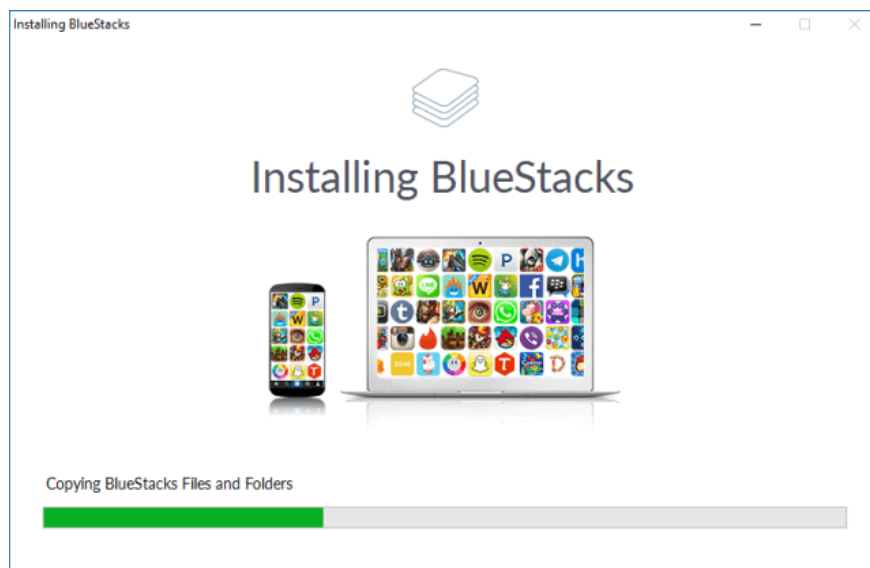
The advice for you is to insert all of these files into a separate folder to make the search process easier.

## 2. Set up Pokemon GO

### 1. Install BlueStacks

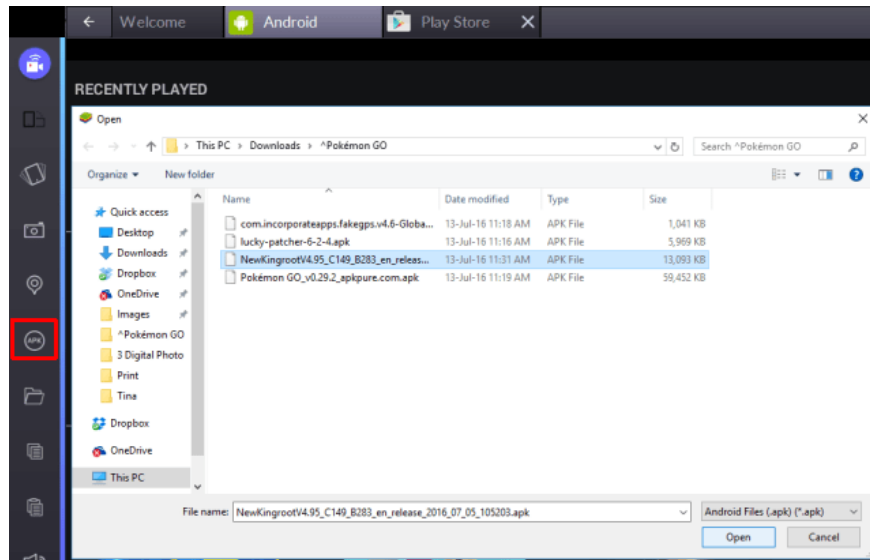
First install BlueStacks.

In addition, you can set up your Google account to connect to the game faster.

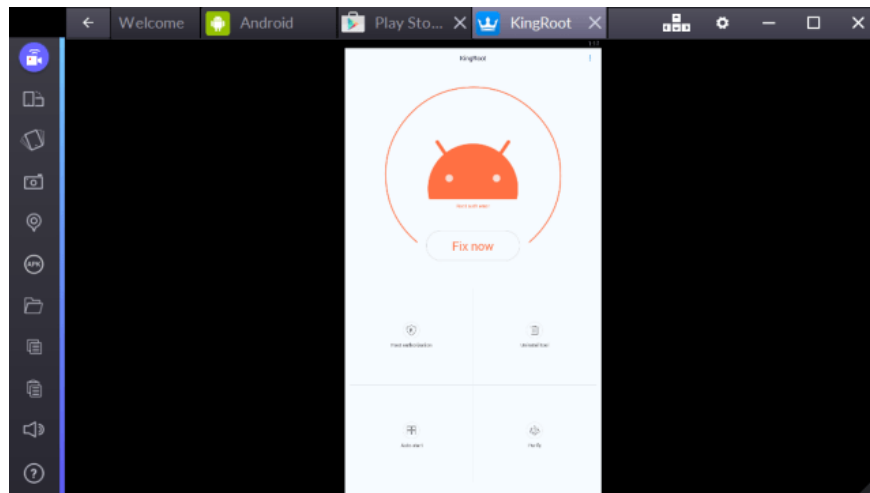


### 2. Install and run KingRoot

To install KingRoot, open BlueStack, then click the APK icon in the left pane, open the corresponding APK file on your computer and KingRoot will install automatically.



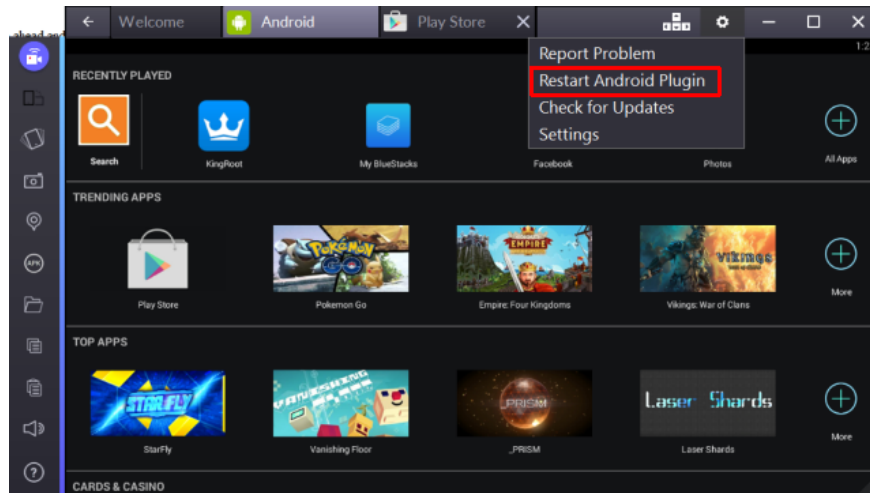
After installation is complete, run KingRoot, scroll down and click **Try it**, then click **Fix now** .



When you see the Security Index window, click **Optimize now** , then close KingRoot again.

### 3. Restart BlueStacks

Click on the serrated icon in the top right corner of BlueStack, select **Restart Android Plugin** to restart BlueStacks application.



## 4. Copy files from Windows

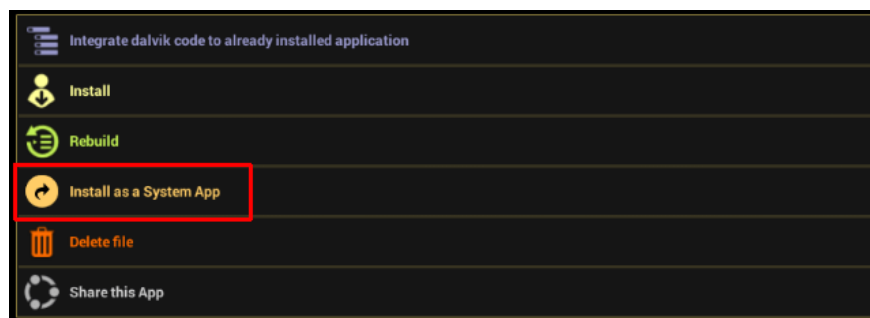
Click on the folder icon on the sidebar BlueStack in the left pane and open FakeGPS to automatically copy to BlueStacks.

## 5. Install and run Lucky Patcher

The same is the process of installing KingRoot. Just click the APK in the left pane of the BlueStacks window, select the APK file on your computer and it will automatically install.

When you open Lucky Patcher for the first time, click Allow to allow application access.

Next on Lucky Patcher window, click **Rebuild & install** in the lower right corner, select **sdcard => Windows => BstSharedFolder**. Here you select **APK file for FakeGPS** and **Install as a System App** . Select **Yes** to confirm the installation.



You will have to restart BlueStacks to apply changes. You can choose **Yes** or use **Restart Android Plugin** as in step 3 above.

## 6. Install Pokemon GO

After installing KingRoot and Lucky Patcher, you just need to install the APK file that you downloaded earlier. Do not open the application at this time because the application is inactive.

## 7. Check your location settings

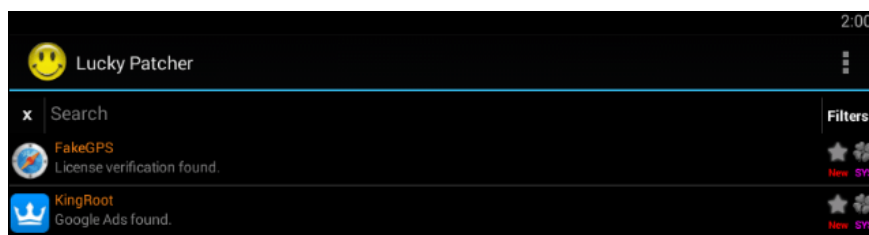
On BlueStacks, you click the jagged icon in the top right corner, select **Settings** => **Location** and make sure that the **Mode** is set to **High accuracy**.

Any other GPS services should be disabled. On Windows 10, press the **Windows + I** key combination to access the Settings application. Then on the Settings window, click **Privacy** => **Locations** and set **Location for this device to OFF**.

On other Windows versions, open the **Start Menu** , search for the **location** and make sure all available features are disabled.

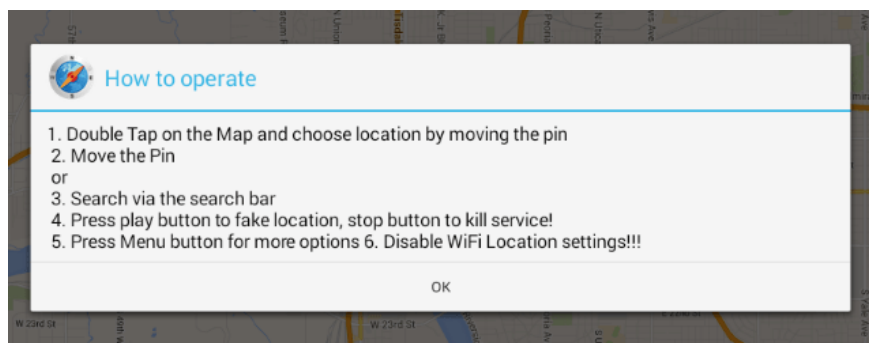
## 8. Set FakeGPS

Return to Lucky Patcher, and you'll see FakeGPS on the app's list. If you don't see it, don't worry.

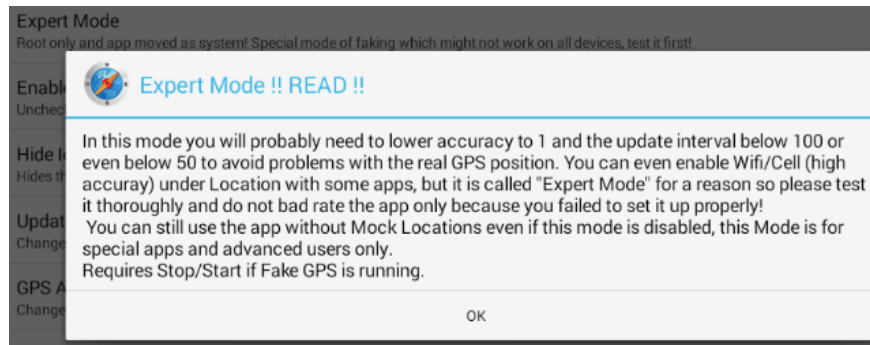


To view FakeGPS, go to **Search** at the bottom, then select **Filter** in the top right corner, select **System Apps** and click **Apply**.

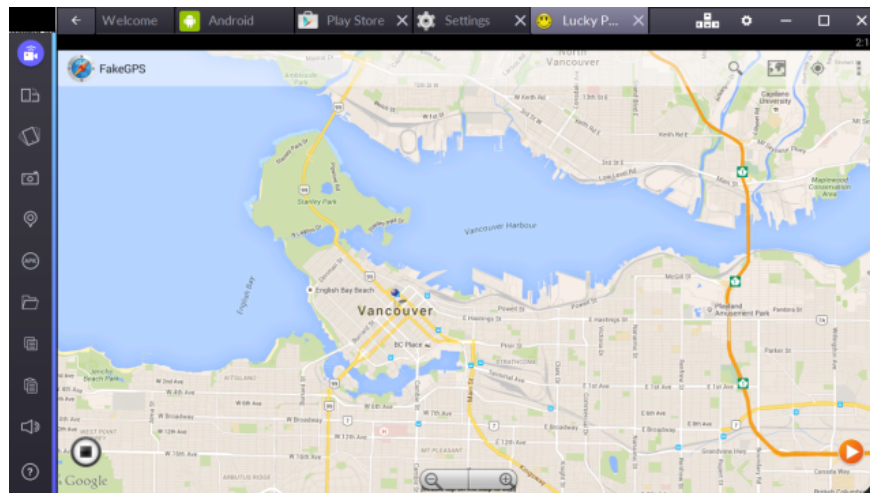
Click select FakeGPS from the list and select **Launch App** . Now the screen on the How to operate page will explain how to use it. Read the instructions carefully and click **OK** to close the window.



Click on the 3 dots icon in the top right corner, select **Settings** , check **Export Mode** , read the alerts and click **OK** to confirm.



Next, click the back arrow icon in the top left corner to return to the map. Choose any location you want or position close to your current location .



Click on it and select Save to add the location you want. Then click the orange **Play** button in the lower right corner to add a fake address.

## 9. Play Pokemon GO

Finally launch the Pokemon GO app and start playing the game. You can set up Pokemon GO just like when you play on Android devices and iOS devices. Also you can log in with your Google account and the application will automatically download the Pokemon GO account settings earlier, so you should attach Pokemon GO with your Google account.

When the game is finished, you will find that you are in the fake location that you added earlier. If the game does not detect your location immediately, return to FakeGPS (inside Lucky Launcher), select a location on the map and add the fake location again. You may have to restart BlueStacks.

Every time you want to move to another location, you must go back to FakeGPS and add a new fake location.

Note that you do not need to turn off the camera. When you first play Pokemon and your camera doesn't work, the app will ask if you want to turn off AR mode (AR = augmented reality). Just choose **Yes** to confirm and you can catch Pokemon in a virtual environment.

If you have Touch Screen, you can use it to interact with the app and throw Poke Ball.

### 3. Some good tips

Setting up Pokemon GO game on BlueStacks is not simple and sometimes it can cause some errors. Here are some good tips in case the game has a GPS fault or your location.

- On Windows, make sure that the **Location for this device feature** has been turned off .
- On FakeGPS, double-click **Expert Mode** to activate the mode.
- In the BlueStack position setting, confirm **Google Location History** is **OFF** and the **Mode** is set to **High accuracy**.
- Launch FakeGPS and add a fake location.
- Use a location you have access on Android or iOS device.
- Restart BlueStacks again to fix the error.

#### Refer to some of the following articles:

1. Fix Not a Valid Win32 Application error when opening Game on Windows
1. If you want to be an excellent player when playing Agar.io, read this article
1. Summary - How to play Pokemon GO, virtual reality game catch Pokemon on smartphone

#### Good luck!

You finished reading the article "**How to play Pokemon GO on Windows computers**" edited by the [TipsMake](#) team. We hope this article has provided you with many useful tech tips and tricks. You can search for similar articles on tips and guides. Thank you for reading and for following us regularly.