

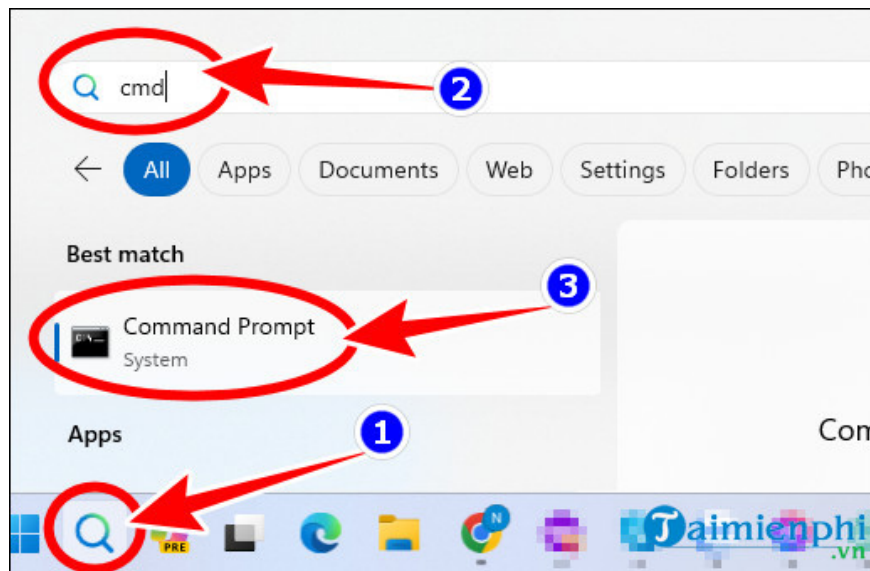
How to play Minecraft over LAN with friends on TLauncher

With the Minecraft LAN function, you can create a new world, explore beautiful landscapes with friends, cooperate to fight dangerous mobs or build a prosperous city.

Minecraft is a unique open world game where you can unleash your creativity and explore complex mysterious caves. You can **play Minecraft over LAN** with your friends if you are using the same Wi-Fi or wired network connection.

1. Configure LAN for friends to play Minecraft with you

Step 1: On Windows computer , go to **search** or **Start**, type **CMD** => select **Command Prompt** as shown below.



Step 2: At the Command Prompt window , type **ipconfig** => press **Enter** , copy the IP address in **IPv4 Address** . For example, as shown below, the IPv4 Address is **192.168.1.153** .

```

Command Prompt
Microsoft Windows [Version 10.0.22635.2921]
(c) Microsoft Corporation. All rights reserved.

C:\Users\Admin>ipconfig

Windows IP Configuration

Ethernet adapter Ethernet:

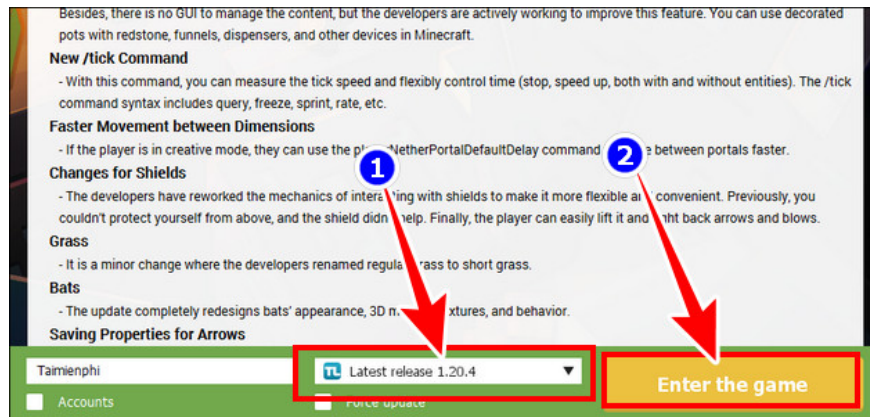
    Connection-specific DNS Suffix  . : 
    Link-local IPv6 Address . . . . . : fe80::ba92:2d3f:c2d3:3f9f%15
    IPv4 Address. . . . . : 192.168.1.153
    Subnet Mask . . . . . : 255.255.255.0
    Default Gateway . . . . . : 192.168.1.1

C:\Users\Admin>

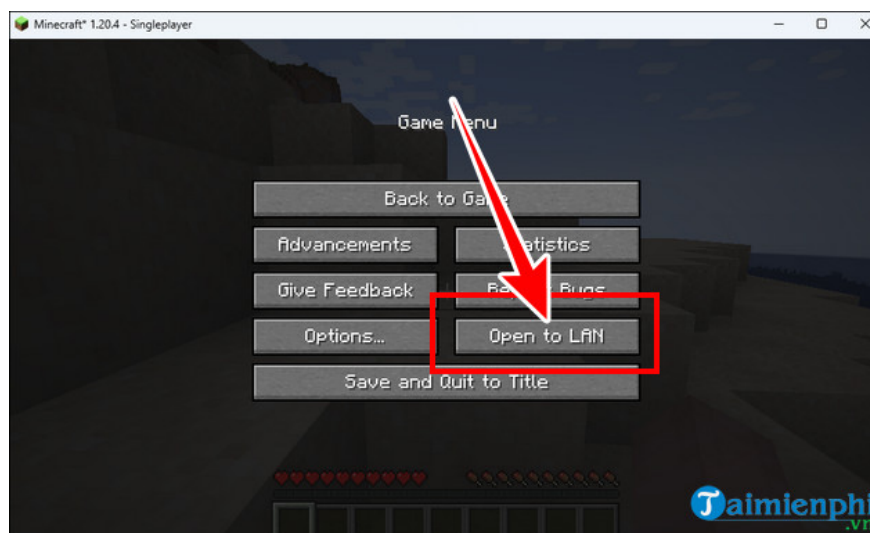
```

Step 3: Open **TLauncher** , select the TL Minecraft game version **with the letters TL in front of the Minecraft** game name => select **Enter The Game** .

- **Note:** If you choose the version without the letters TL, you cannot play with friends.

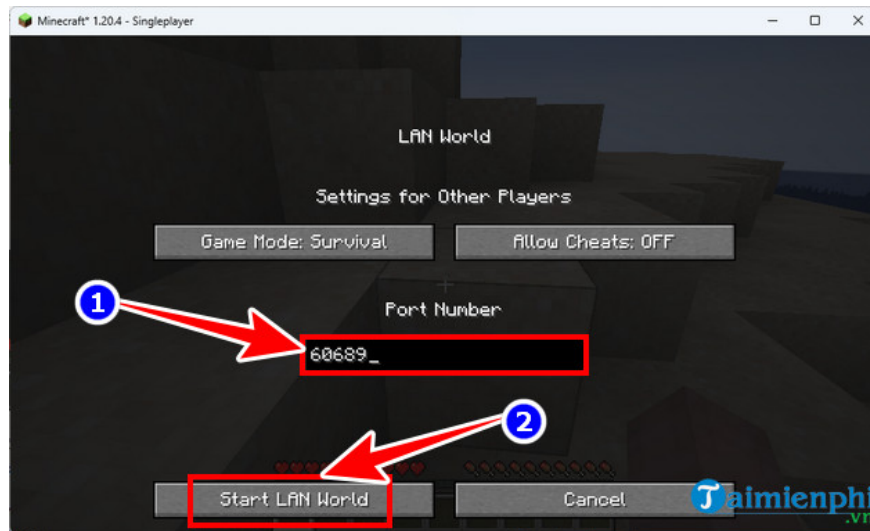


Step 4: Enter your world, press **ESC** button => select **Open to LAN** .

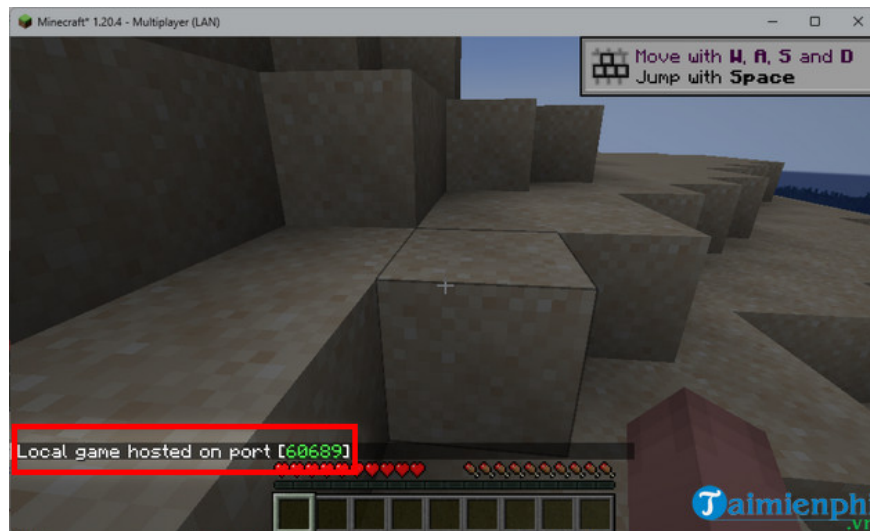


- Enter **any 5 numbers** in the **Fort Number** box => select **Start Lan World** .

+ **Fort Number** : Port number for other players to play Minecraft with you via LAN.



- The message **Local game hosted on port [60689]** appears on the screen, meaning you have successfully configured the LAN.

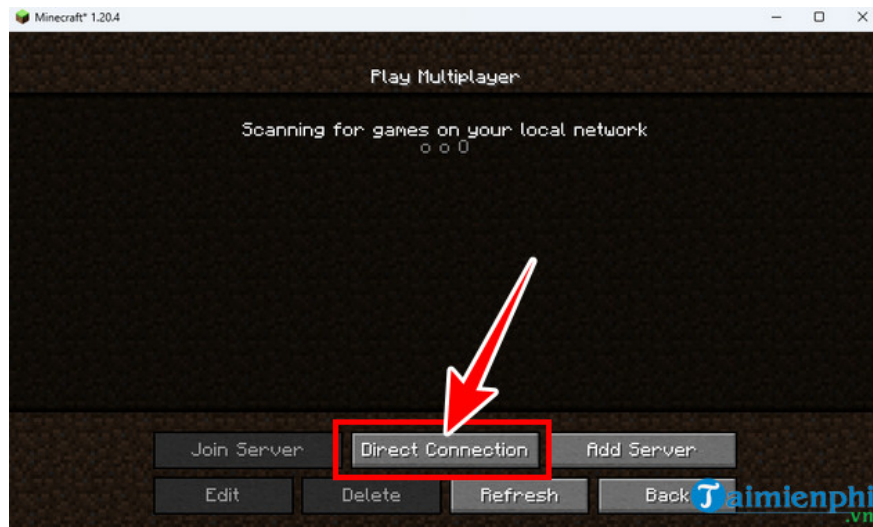


2. How to join a Minecraft server via LAN

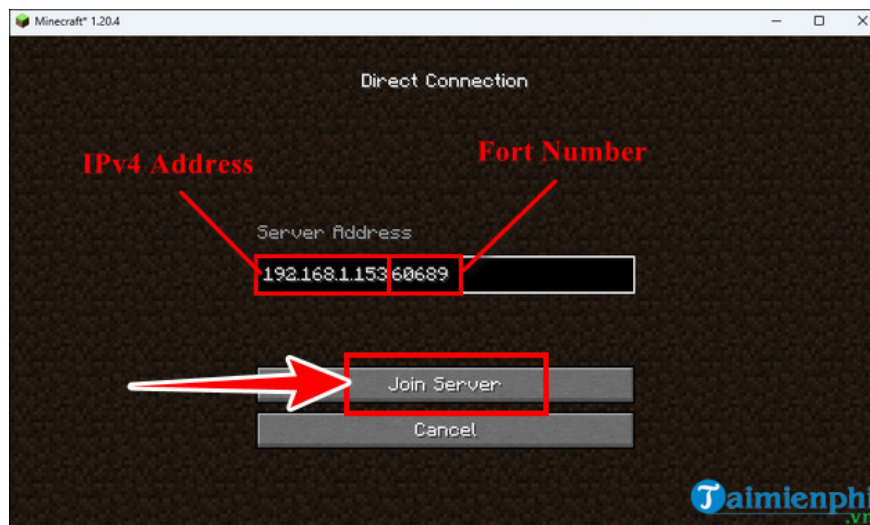
Step 1: Other players now just need to open **TLauncher** and **select the correct version** with the Minecraft network configuration (as above is 1.20.4) => select **Enter The Game** => select **Multiplayer** .



Step 2: In the **Play Multiplayer** section , select **Direct Connect** .



Step 3: Enter (**IPv4 Address**) + (**Port Number**) that you received from the LAN configuration person to play Minecraft game. Example **192.168.1.153:60689** => select **Join Server** to the server.



3. Some common errors when playing Minecraft over LAN

- Error **Invalid Session** , **Check User Name** => Did not select the correct version with TL icon.
- Error **Io.netty.channel.AbstractChannel\$AnnotatedConnectException: Connection time out: no further information** => Minecraft cannot find information about the server, so you should
 - + Turn off antivirus software (if any)
 - + Turn off firewall on the server
 - + Reconfigure the server
- Error **1.14.2: Bad packet ID 26; 1.13.2: Bad packet ID 27; 1.7.10: is stuck on Logging in.** or received **string length longer than maximum allowed** => Reset your player name, no longer than 16 characters

As you know, each Minecraft game update has a lot of new dangerous content and mods, playing with friends is a safe way to survive, overcome many traps and challenges by interacting directly. Although the **Vietnamese version of Minecraft 1.21 APK** is not available on the TLauncher server, users can only download and play on their phones or computers via the Android emulator.

==> Refer to how **to use BlueStacks** to play games on computers.

You finished reading the article "**How to play Minecraft over LAN with friends on TLauncher**" edited by the [TipsMake](#) team. We hope this article has provided you with many useful tech tips and tricks. You can search for similar articles on tips and guides. Thank you for reading and for following us regularly.