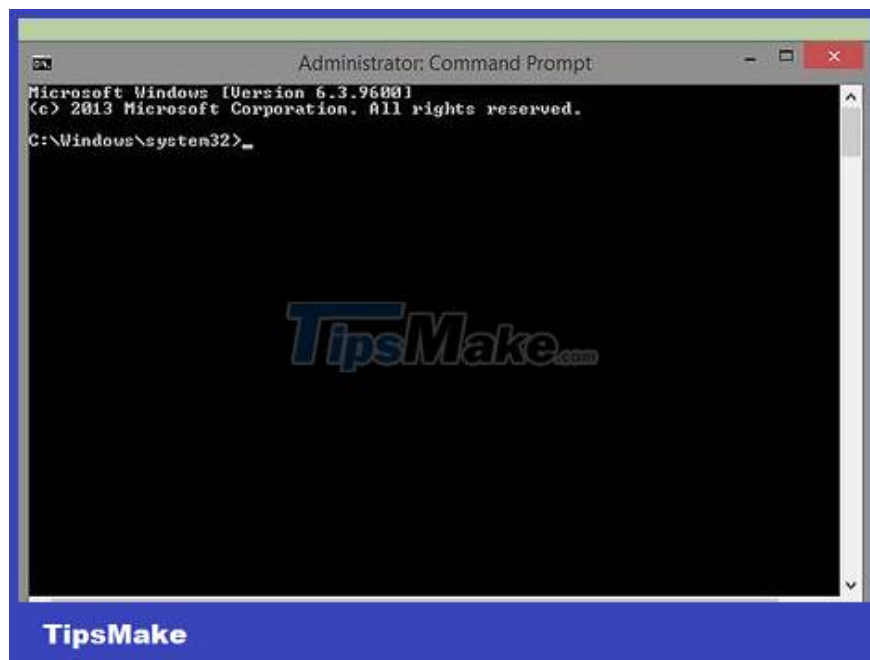


How to Ping an IP Address

The Ping command allows testing the connection speed between you and another network node. In this article, TipsMake will show you how to use the Ping command on any operating system.

Windows, Mac OS X, and Linux



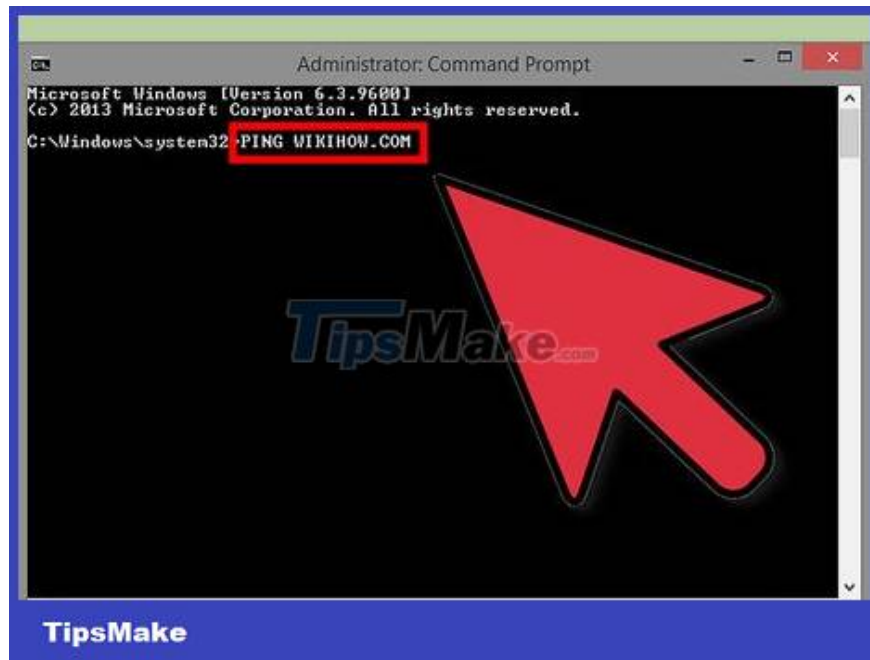
Open the Command Prompt command line interpreter application or Terminal emulator. Every operating system has a command line interface that allows running the Ping command. The Ping command works almost the same on all operating systems.

If using Windows, open Command Prompt. Click the Start button and enter cmd in the Search box. Windows 8 users can type 'cmd' from the Start screen. Press the Enter key to launch Command Prompt.

If using Mac OS X, open Terminal. Open the Applications folder and then the Utilities folder. Select Terminal.

If using Linux, open the Telnet/Terminal window. They are usually located in the Accessories folder in the Applications folder.

On Ubuntu, you can use the keyboard shortcut Ctrl + Alt + T to open the emulator.

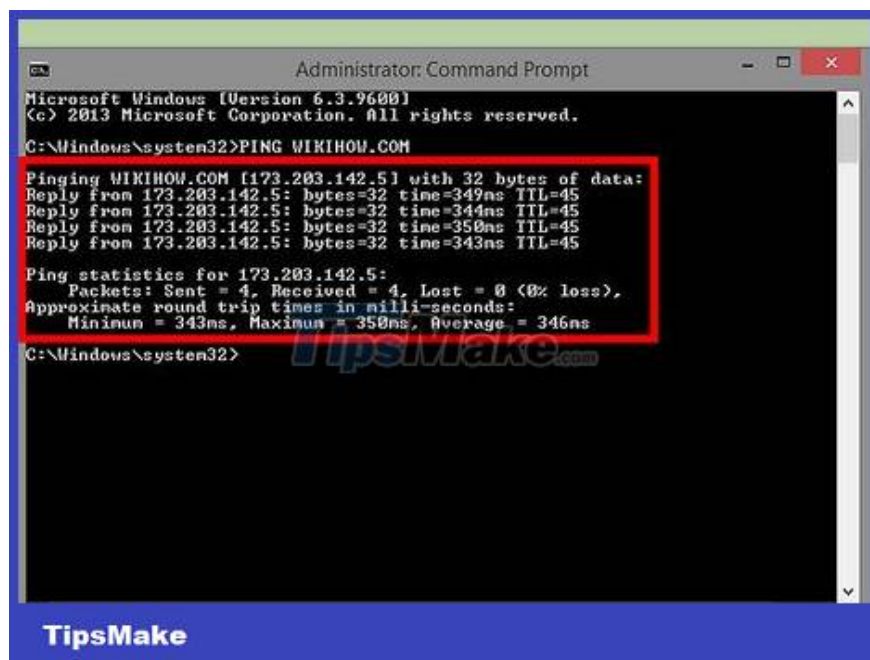


Enter the Ping command. Type or `ping tên máy chủ` / `ping ??a ch? IP`

The server name is usually the address of the website. Replace *hostname* with the website or server you want to ping. For example, to ping wikiHow's main server, type `ping www.wikihow.com`.

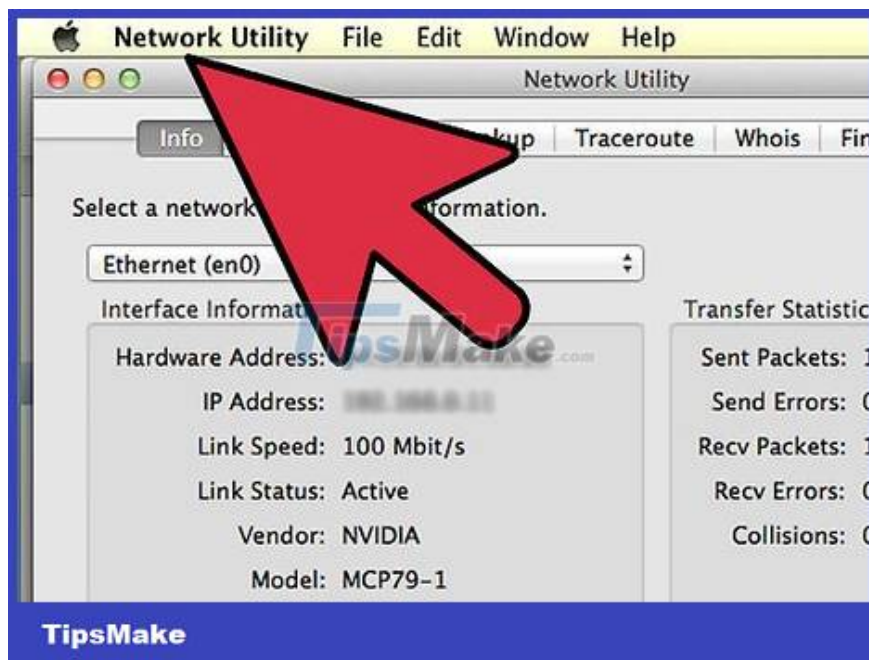
An IP address is the location of a computer on a certain network, be it a local network or the internet. If you know the IP address you want to ping, replace it with *IP address* . For example, to ping an IP address `192.168.1.1`, please hit `ping 192.168.1.1`.

To ping your device yourself, type `ping 127.0.0.1`.

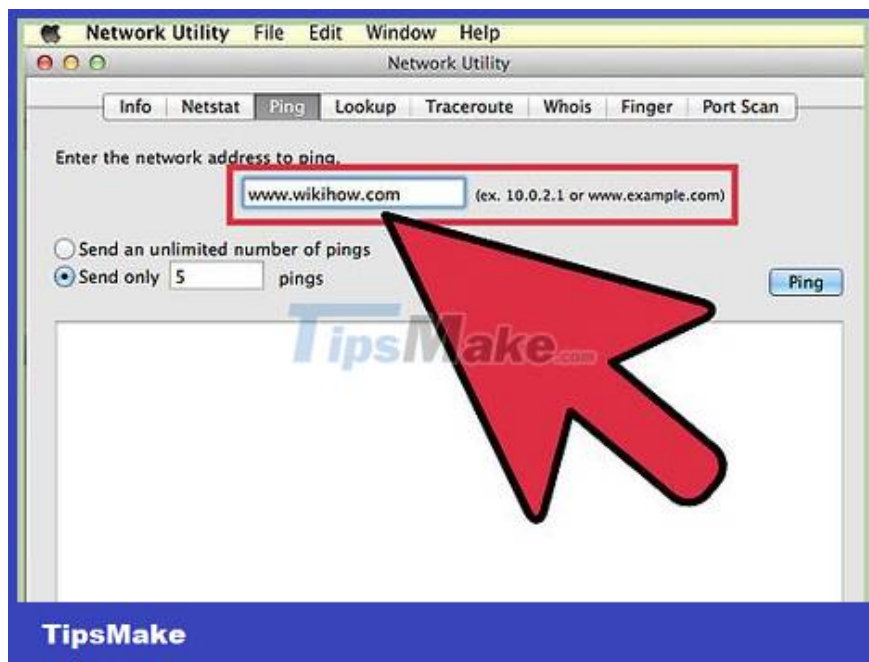


Press Enter to read the ping results. They will be displayed below the current command line. Refer to the section below to learn how to read these parameters.

Network Utility on Mac OS X



Open Network Utility. Open the Applications folder and select Utilities. Find Network Utility.



Click on the Ping tab. Specify the host name or IP address.

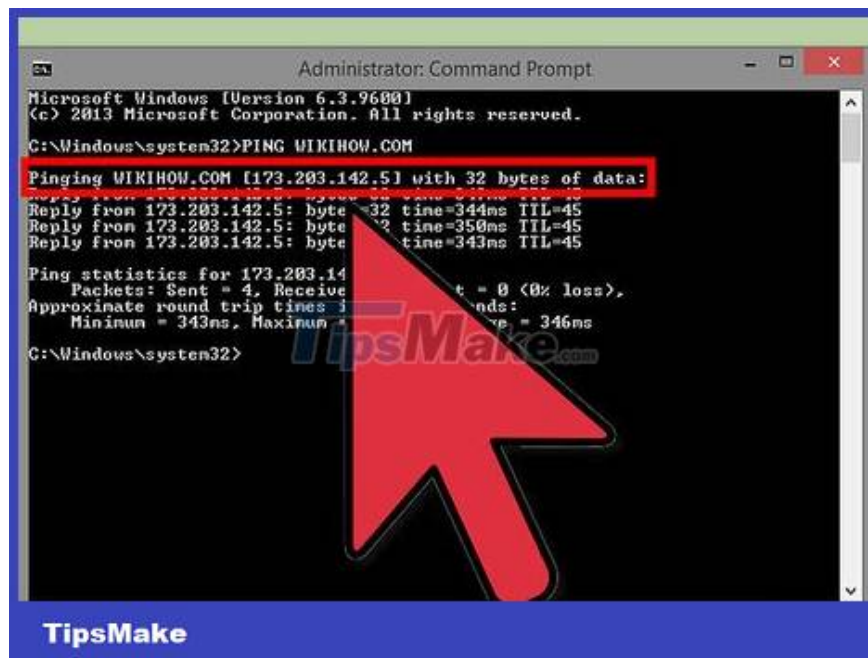
The server name is usually a website address. For example, to ping wikiHow's main server, you type `www.wikihow.com` in the box.

IP address is the location of a computer in a certain network, be it a local network or the internet. For example, to ping an IP address 192.168.1.1, type 192.168.1.1 in the frame.



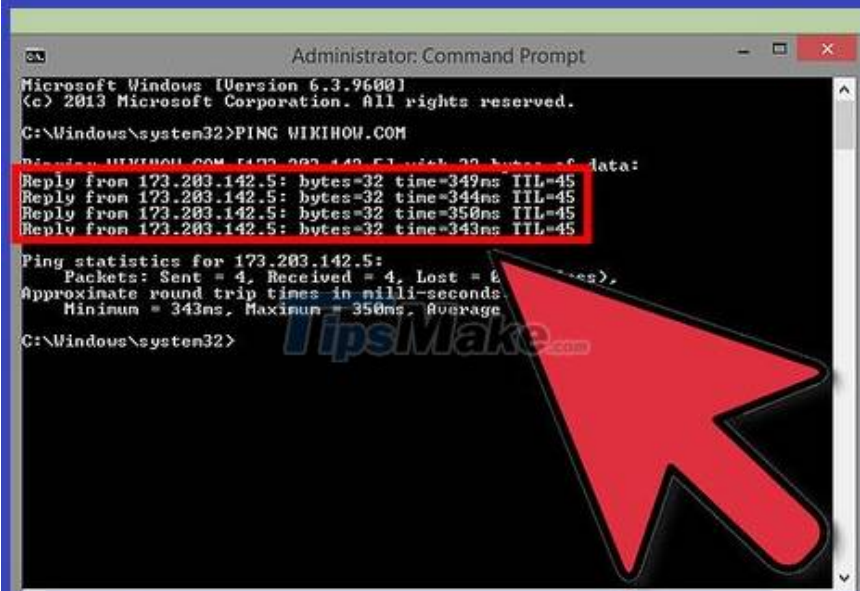
Set the number of ping commands you want to send. Usually with just 4-6 pings, you can get relatively good measurements. Click the Ping button when ready and the results will be displayed in the lower part of the window.

Read the parameters obtained from the ping command



Read the first line. The first line tells you what command you are executing. It repeats the address you enter and tells you how much data you're sending. Such as:

Pinging www.wikihow.com [173.203.142.5] with 32 bytes of data (Ping www.wikihow.com [173.203.142.5] with 32 bytes of data):



```
Administrator: Command Prompt
Microsoft Windows [Version 6.3.9600]
(c) 2013 Microsoft Corporation. All rights reserved.

C:\Windows\system32>PING WIKIHOW.COM

Pinging WIKIHOW.COM [173.203.142.5] with 32 bytes of data:
Reply from 173.203.142.5: bytes=32 time=349ms TTL=45
Reply from 173.203.142.5: bytes=32 time=344ms TTL=45
Reply from 173.203.142.5: bytes=32 time=350ms TTL=45
Reply from 173.203.142.5: bytes=32 time=343ms TTL=45

Ping statistics for 173.203.142.5:
    Packets: Sent = 4, Received = 4, Lost = 0 (0% loss),
    Approximate round trip times in milli-seconds:
        Minimum = 343ms, Maximum = 350ms, Average = 347ms

C:\Windows\system32>
```

Read the content of the obtained parameters. When executed successfully, the Ping command will return lines representing the response time of that address. TTL represents the number of hops involved in transmitting a data packet. The smaller this number, the more routers the packet passes through. The time here is measured in milliseconds, indicating the time it takes to establish the connection:

```
Reply from 173.203.142.5: bytes=32 time=102ms TTL=48 (Ph?n h?i t?
173.203.142.5: s? byte=32 th?i gian=102ms TTL=48
Reply from 173.203.142.5: bytes=32 time=105ms TTL=48 (Ph?n h?i t?
173.203.142.5: s? byte=32 th?i gian=105ms TTL=48)
Reply from 173.203.142.5: bytes=32 time=105ms TTL=48 (Ph?n h?i t?
173.203.142.5: s? byte=32 th?i gian=105ms TTL=48
Reply from 173.203.142.5: bytes=32 time=108ms TTL=48 (Ph?n h?i t?
173.203.142.5: s? byte=32 th?i gian=108ms TTL=48)
```

You may have to press Ctrl + C to stop the ping command.

```
Administrator: Command Prompt
Microsoft Windows [Version 6.3.9600]
(c) 2013 Microsoft Corporation. All rights reserved.
C:\Windows\system32>PING WIKIHOW.COM

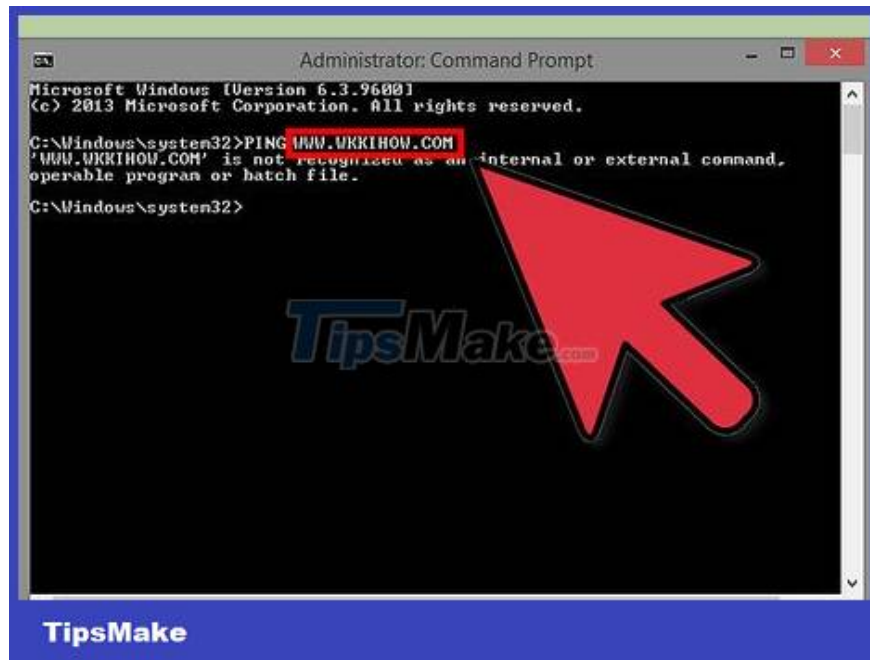
Pinging WIKIHOW.COM [173.203.142.5] with 32 bytes of data:
Reply from 173.203.142.5: bytes=32 time=349ms TTL=45
Reply from 173.203.142.5: bytes=32 time=344ms TTL=45
Reply from 173.203.142.5: bytes=32 time=350ms TTL=45
Reply from 173.203.142.5: bytes=32 time=343ms TTL=45

Ping statistics for 173.203.142.5:
    Packets: Sent = 4, Received = 4, Lost = 0 (0% loss),
    Approximate round trip times in milli-seconds:
        Minimum = 343ms, Maximum = 350ms, Average = 346ms
C:\Windows\system32>_
```

Read the summary table. When everything is done, a summary of the results will be displayed. Lost packets mean the connection to that address is unreliable and data is lost during transmission. The summary table will also show the average connection time:

Ping statistics for (S? li?u th?ng kê Ping dành cho) 173.203.142.5:
Packets (Gói tin): Sent (G?i ?i) = 4, Received (Nh?n v?) = 4, Lost (Th?t l? c) = 0 (0% loss),
Approximate round trip times in milli-seconds (Th?i gian m?t vòng ??c tính b?ng mili giây):
Minimum (Nh? nh?t) = 102ms, Maximum (L?n nh?t) = 108ms, Average (Trung bình) = 105ms

Troubleshoot

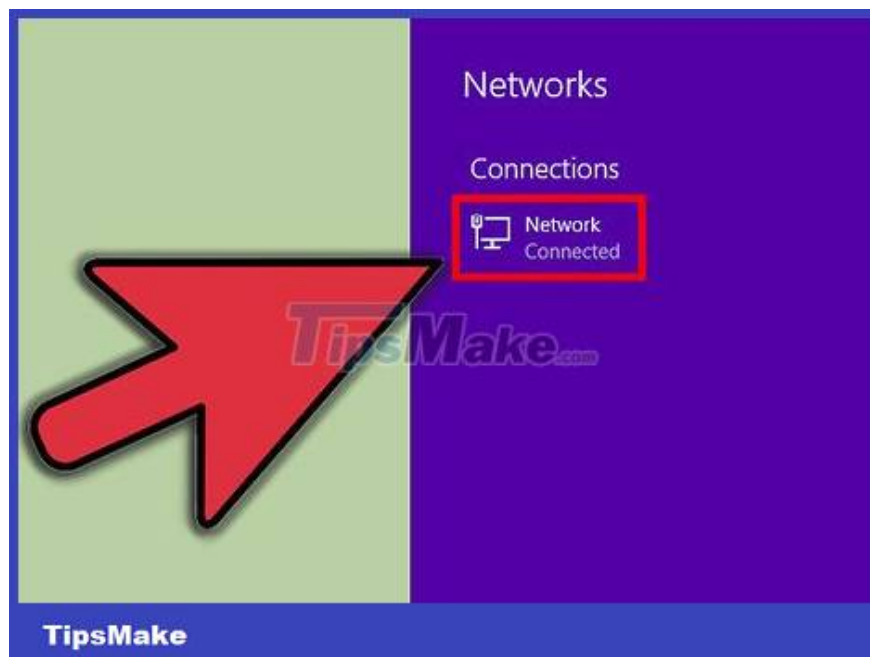


Check your input content. One of the most common error messages is:

Ping request could not find host www.wikihow.com. Please check the name and try again (L?nh ping không tìm ???c máy ch? www.wikihow.com. Vui lòng ki?m tra và th? l?i). Usually it means you typed the server name wrong.

Try typing again, correcting any spelling errors. If the problem is still not resolved, then try another popular hostname, such as online search engines or news sites. If you get an error message 'Unknown server', then the problem most likely lies with the domain name server.

Use the server's IP address instead of its name (such as 173.203.142.5) for ping. If successful, then either the address you used for the domain name server is wrong, or it cannot be reached or has crashed.



Check your connection. One of the other error messages is:

sendto: No route to host (g?i ??n: Không có tuy?n ??n máy ch?). This means that the port address is incorrect or the connection from your device is not working.

Ping 127.0.0.1: that is your computer. If it doesn't, your TCP/IP is not working properly and the network switch needs to be reconfigured.

Check your wireless connection or the connection from your computer to your router, especially if it was working before.

Most computer network ports have an indicator light to indicate connection status and a light that flashes when data is being transferred. When the ping command transfers data at a rate of about 1 packet per second, the data light will probably flash.

Check that the router has appropriate (and error-free) indicator lights, including lights that indicate a good connection to the computer. If the error light illuminates, trace the cable from your computer to the router, make sure it's connected properly, and call your cable or bandwidth provider if necessary.

You finished reading the article "**How to Ping an IP Address**" edited by the [TipsMake](#) team. We hope this article has provided you with many useful tech tips and tricks. You can search for similar articles on tips and guides. Thank you for reading and for following us regularly.