

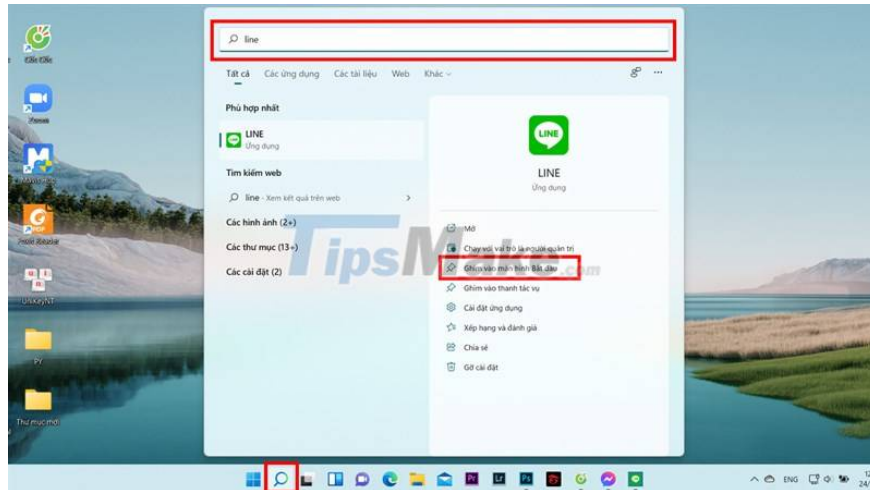
# How to pin applications to Windows 11 computer screen to open faster

Adding applications to the home screen of a Windows 11 laptop has many ways. This is how to pin applications to the Windows 11 computer screen to open quickly and without affecting the interface...

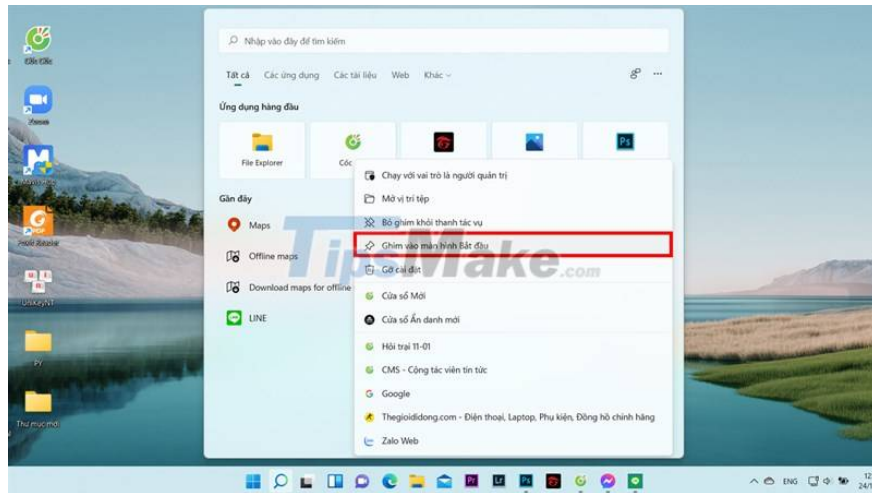
There are many ways to open an application on a Windows 11 computer. To open them quickly, you can pin them to the Taskbar. But if you pin too many applications to the Taskbar, it will be unsightly. So today, I will show you how to pin applications to your Windows 11 computer screen to open quickly and without affecting the interface.

## How to pin applications to the Windows 11 computer screen

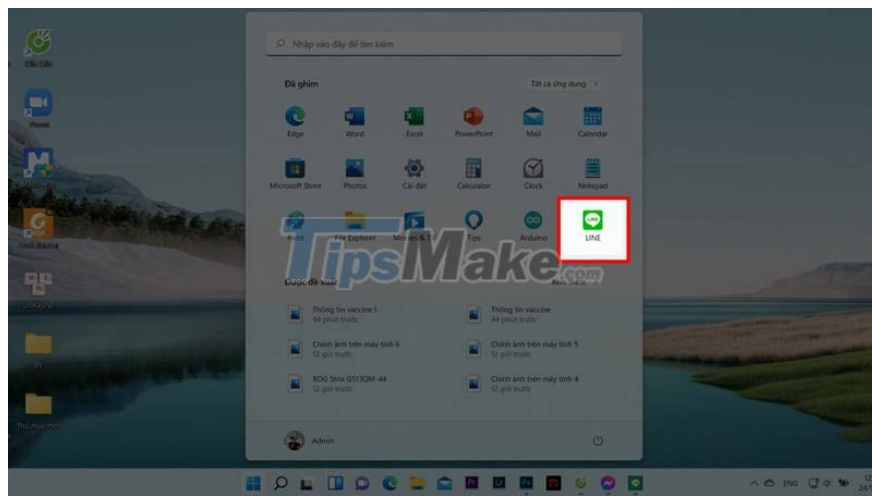
Step 1: First, use the search engine to find the apps you use often and you want to pin them to the [Start Menu](#). Once you've found the app you want to pin, there will be a series of options on the right side of the search panel, including the Pin to start screen item, select it to pin the app.



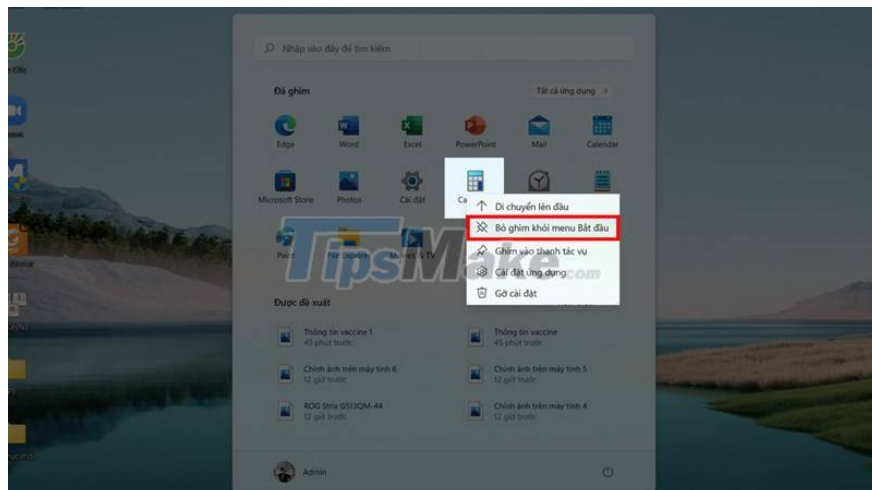
Or with the apps you use often, when you open the search engine, you can see them right away. If you need to pin them to the Start Menu, all you need to do is right-click them and select Pin to [start screen](#).



Step 2: Then, click on the Windows icon, the Start Menu will be displayed, you will see the applications pinned on this menu and including the application you just pinned.



Step 3: If you don't want to pin that application anymore, you can right-click it and select Unpin from Start menu.



With this feature, I was able to open the application 3 times faster than before, try it now. Good luck.

You finished reading the article "**How to pin applications to Windows 11 computer screen to open faster**" edited by the [TipsMake](#) team. We hope this article has provided you with many useful tech tips and tricks. You can search for similar articles on tips and guides. Thank you for reading and for following us regularly.

---