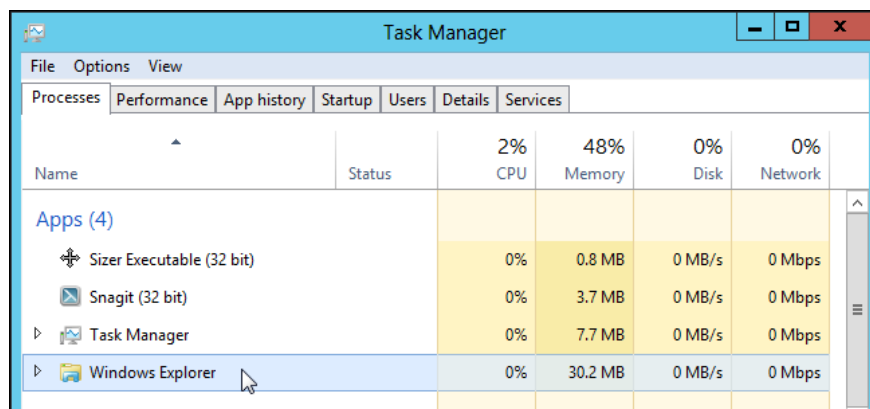


How to pin a Task Manager onto the Taskbar and Start Windows 8 screen

Task Manager in the Windows operating system is an extremely useful tool for allowing users to view and manage active applications and devices.

Task Manager in Windows operating system is known to be an extremely useful tool in **allowing users to view and manage active applications and devices** .

In the latest version of **Windows 8** , Task Manager has been revamped **with more advanced features** than before: **displaying more information and helping you manage applications more efficiently**.



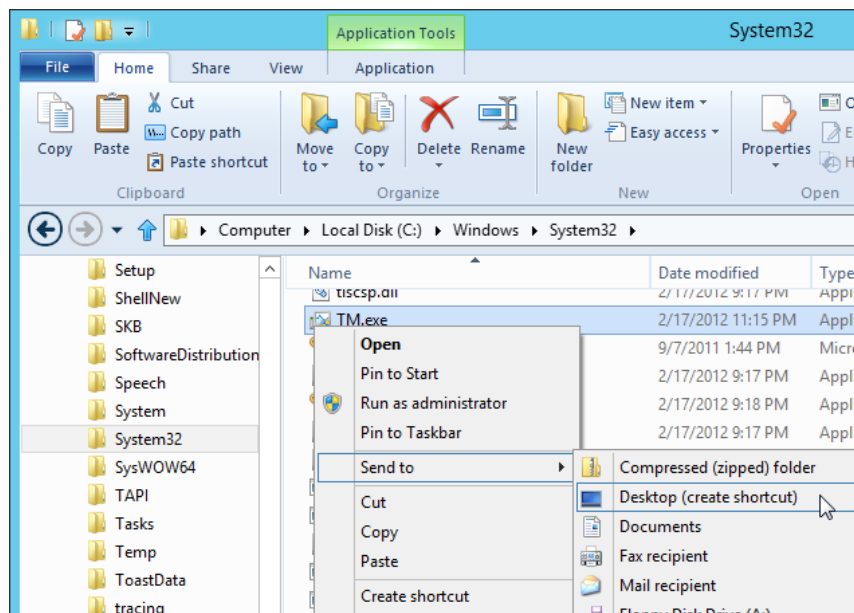
With these significant improvements, Windows 8 users are increasingly inclined to use Task Manager more often. Today we will show you how to add Task Manager to the Taskbar and Start screen in Win8 so that you can quickly and effectively access this utility tool.

To add Task Manager to the Taskbar

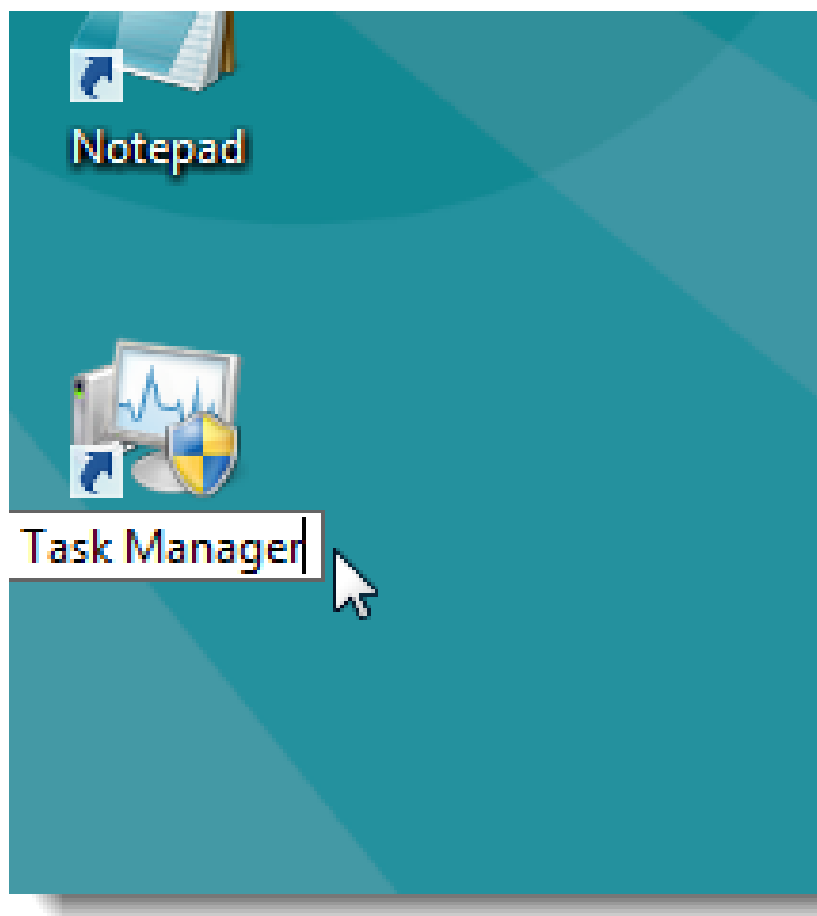
First, go to *Windows Explorer* and **look for the folder with the following address** :

C: WindowsSystem32

Find the file named TM.exe and **right-click** on it, select *Send to -> Desktop (create shortcut)*



By default, the new shortcut created on the Desktop will be named **TM.exe-Shortcut** . If you don't like it, you can rename it as you like.

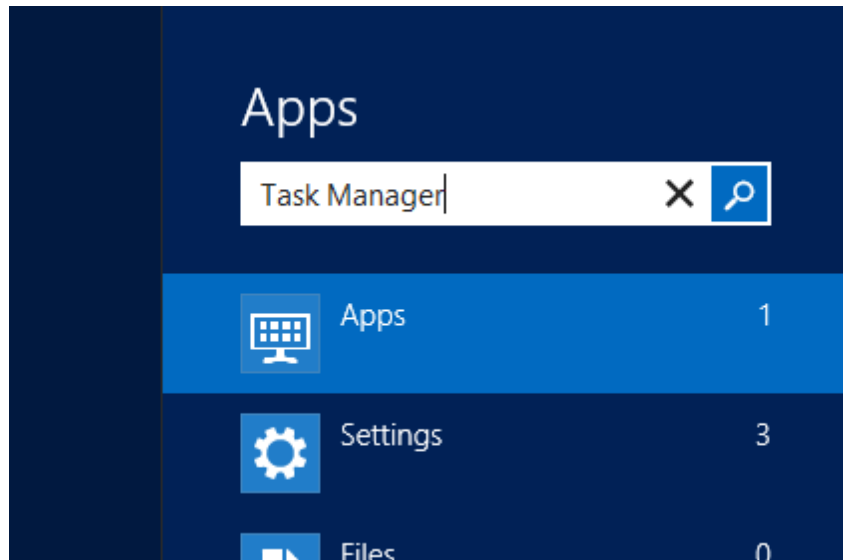


Drag the shortcut to the Taskbar and then pin it there.

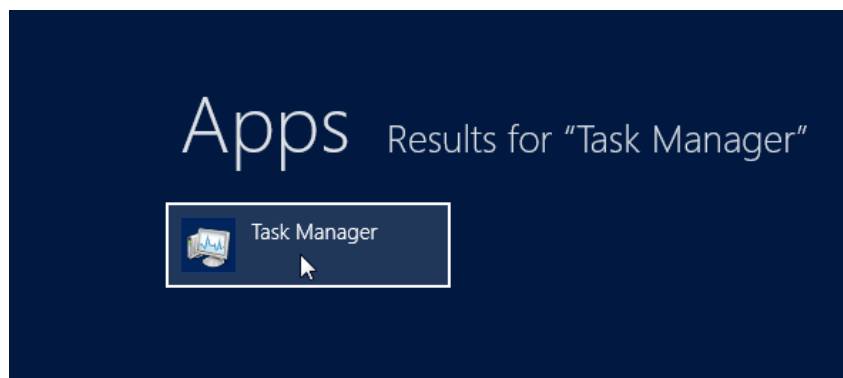


Add Task Manager to the Start screen in Windows 8

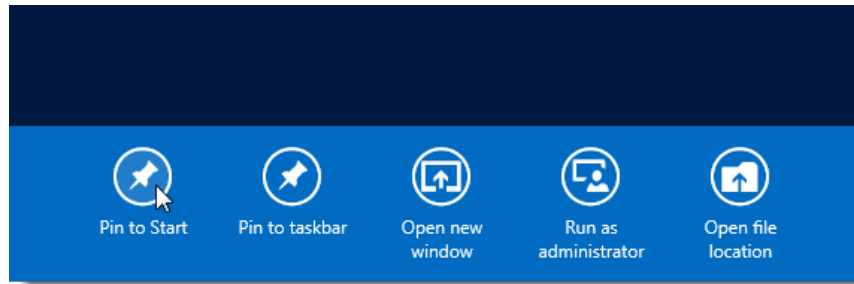
First, you have to **open the Start up program** by **moving the mouse to the lower left corner of the screen and then clicking** . After the Start menu appears, simply **type ' Task Manager '** and the search box will automatically display.



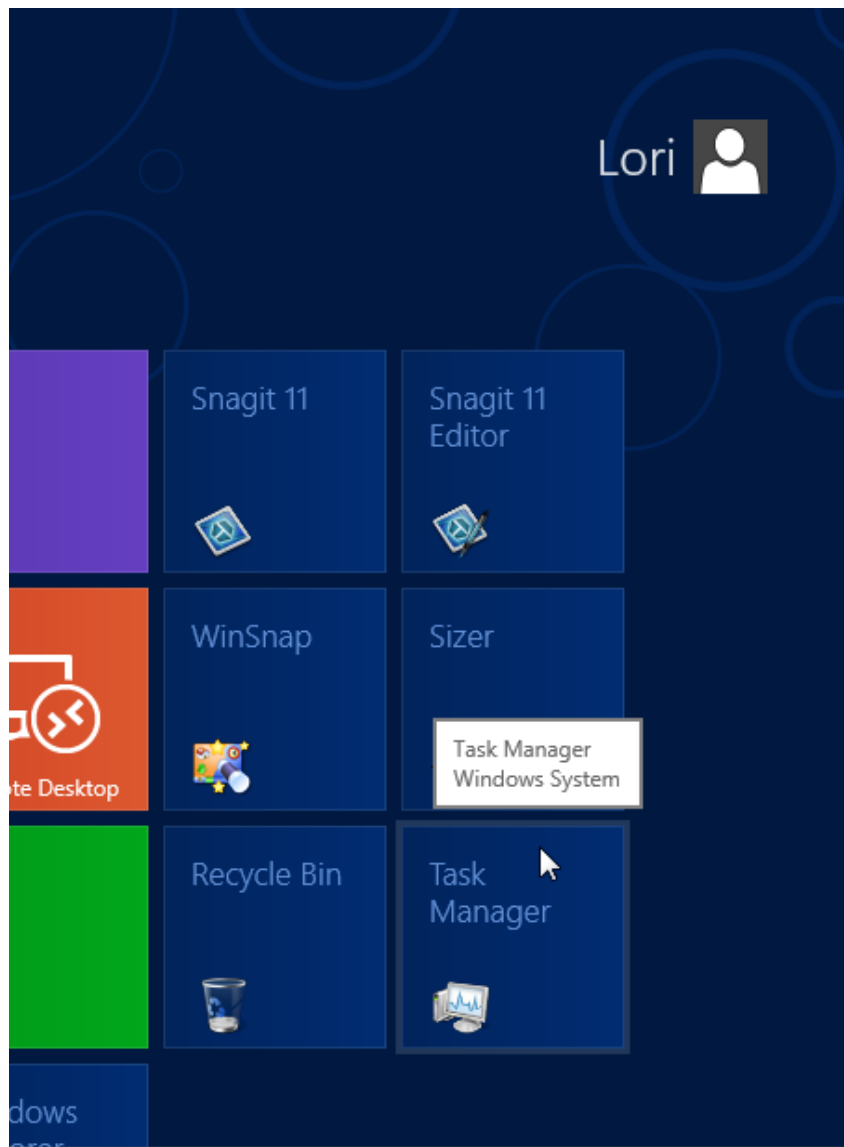
Your search results are displayed on the left side of the screen. You continue to **right click** on it.



Options appear at the bottom immediately. The task is now very simple, you just need to **click the *Pin to Start* icon** to pin Task Manager into the Start program and you're done. Note that you can also use this trick to pin the Task Manager onto the Taskbar - by clicking on ***Pin to Taskbar*** - it is done.



Finally, Task Manager has been added to the right of the Start screen. Want to access this utility faster, you can **drag it to the left** because that's the first side to appear when the screen appears.



You can now access the **Task Manager** to review information systems, manage applications, set up startup programs, and track processes, start and end times of tasks. tools quickly and conveniently. In addition, you can also access Task Manager with *Ctrl + Shift + Esc* if you are more interested in keyboard-related operations.

You finished reading the article "**How to pin a Task Manager onto the Taskbar and Start Windows 8 screen**" edited by the [TipsMake](#) team. We hope this article has provided you with many useful tech tips and tricks. You can search for similar articles on tips and guides. Thank you for reading and for following us regularly.