

How to password protect Chrome with Windows Hello

Chrome is one of the most secure web browsers with many built-in security tools and features to keep your data, passwords, and life safe.

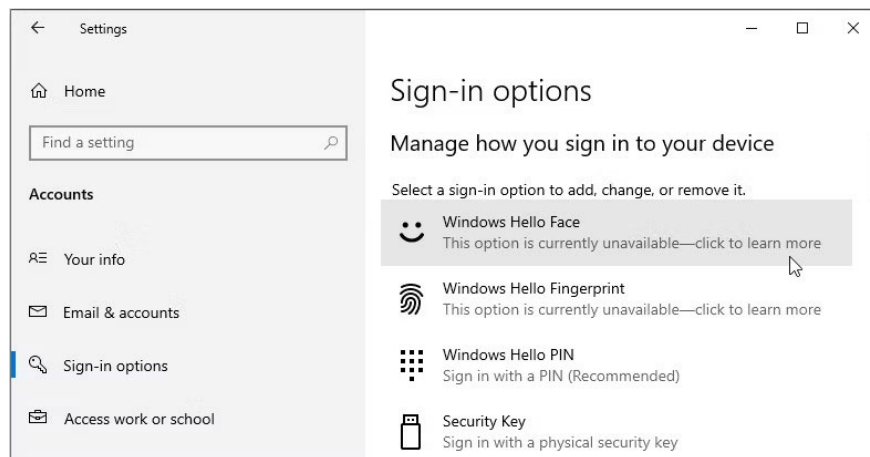
Chrome is one of the most secure web browsers with many built-in security tools and features to keep your data, passwords, and life safe.

But you can always be safer and improve your security, which is why you should use Windows Hello to lock down your data.

How to configure Windows Hello in system settings

Before integrating Windows Hello with Chrome, you need to make sure Windows Hello is enabled in system settings.

1. Press **Windows + I** to open Windows system settings.
2. Navigate to **Accounts > Sign-in options** and find the Windows Hello settings. You'll see options for facial recognition, fingerprint, and PIN as sign-in methods.

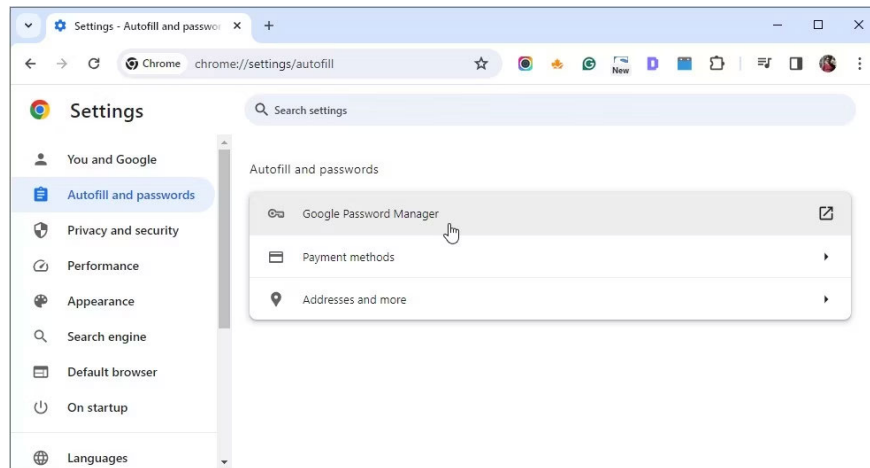


Select the option you want to set up (such as Windows Hello Face) and follow the onscreen instructions to complete setup.

How to use Windows Hello to password protect Chrome

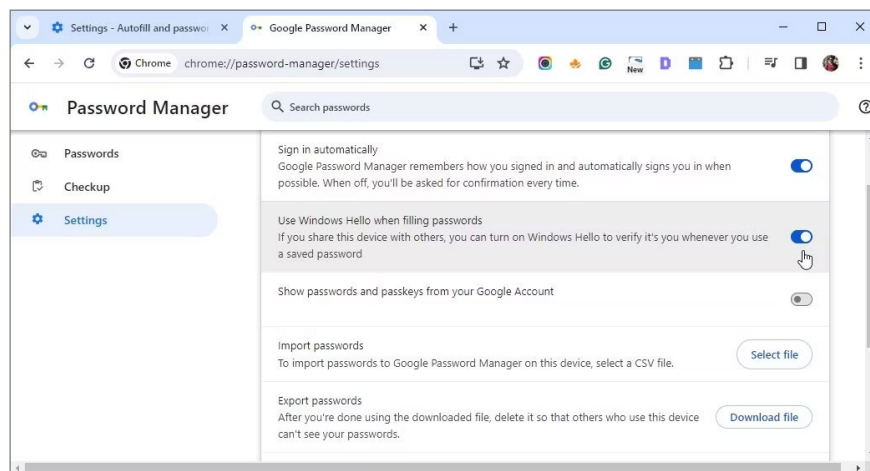
Now, let's explore how you can enable Windows Hello for Chrome and keep your passwords safe:

1. Open Chrome, click the menu icon (three dots) in the upper right corner of the screen and select **Settings** .
2. Select **Autofill and passwords** from the items on the left, then click the **Google Password Manager** option .



From there, follow these steps:

1. Select **Settings** from the menu items on the left side of the Google Password Manager screen.
2. In the middle panel, turn on the button next to **Use Windows Hello when filling passwords** to activate this feature.



To validate the change, enter your PIN or use the system-recommended alternative Windows Hello method.

And that's it! After turning on Windows Hello verification, you'll see a window asking for biometric or PIN authentication before Chrome autofills your saved login information.

Integrating Windows Hello with Chrome provides convenience and enhanced security in managing your passwords. But if you decide it's not for you, turning it off is pretty simple.

You finished reading the article "**How to password protect Chrome with Windows Hello**" edited by the [TipsMake](#) team. We hope this article has provided you with many useful tech tips and tricks. You can search for

similar articles on tips and guides. Thank you for reading and for following us regularly.
