

# How to optimize the gaming performance for computers with weak configuration

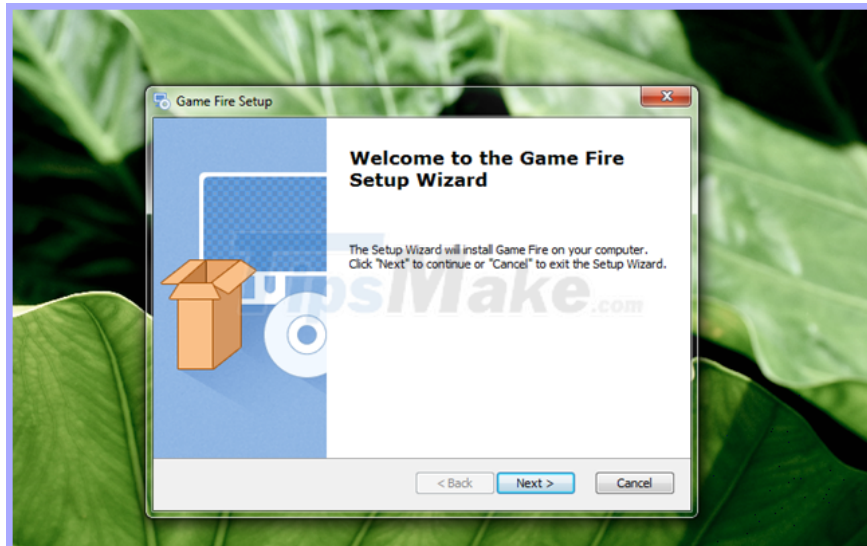
With Game Fire Pro, fighting heavy games on computers with modest configuration is not too difficult

If you use Windows 10, you will be very impressed with the Game Mode that Microsoft has built-in. However, it seems that Game Mode only really "works" when you own a computer with a good configuration. As for the "modest" configuration, Game Mode is not really effective.

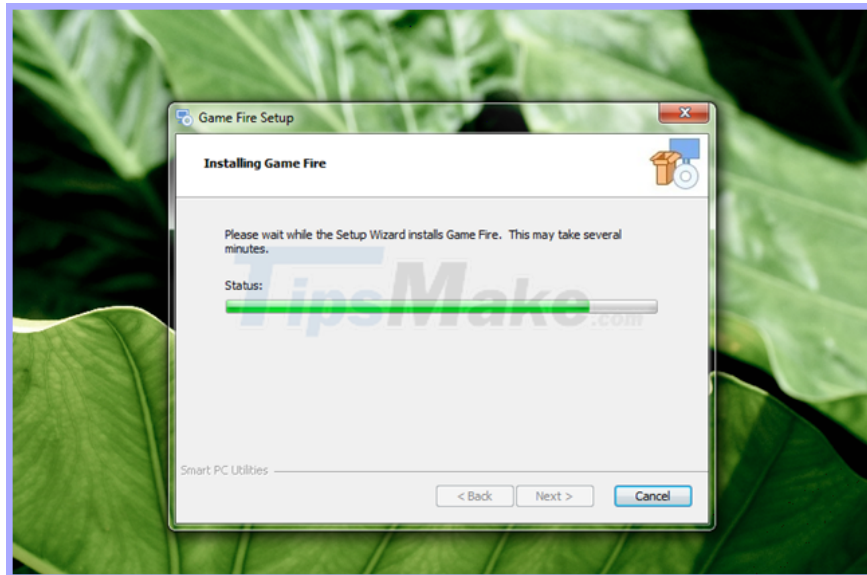


Therefore, often to be able to experience the "heavy" games, gamers are forced to choose one of two solutions is to upgrade the hardware and use software to help optimize performance, accelerate gaming . And software solutions are considered more popular because of their convenience and . savings.

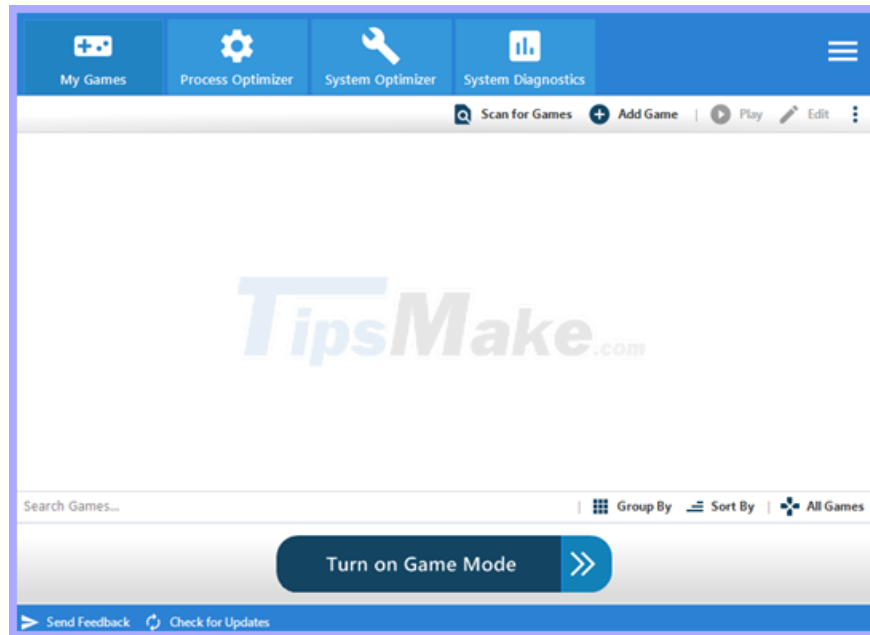
*This article will suggest readers of Game Fire Pro software, the solution is considered more powerful than Game Mode of Windows 10 in optimizing performance and speeding up games on computers with modest configuration, As follows.*



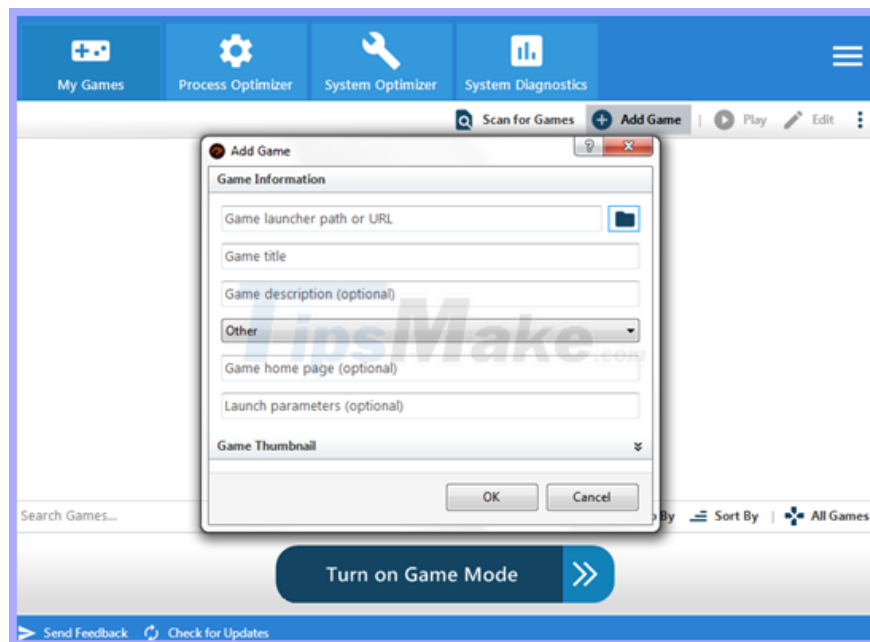
To download, visit this address. There are 02 versions of Game Fire for users to choose and use, including free and paid versions. Depending on the version, there will be limited functionality. After selecting, download and start the installation process on your computer.



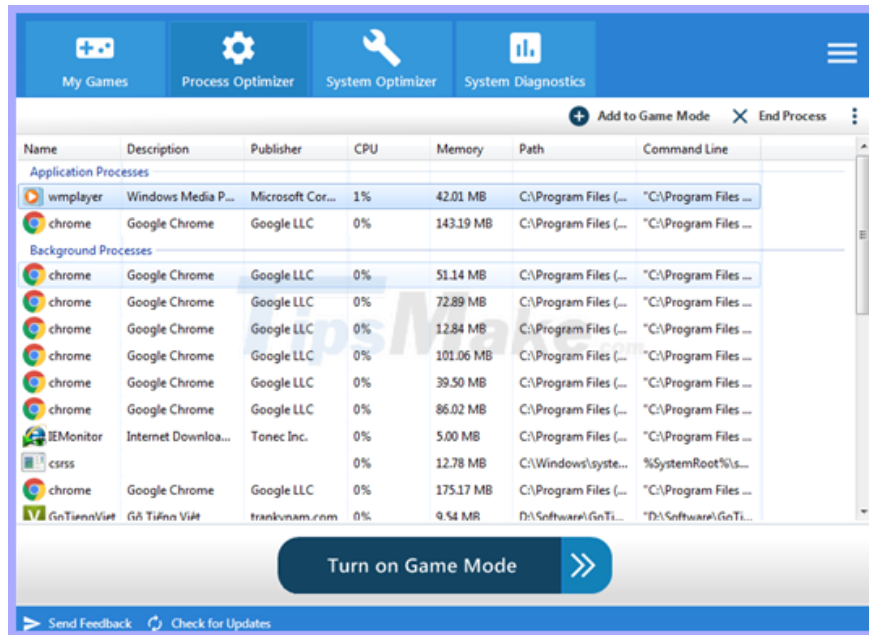
The configuration installation process is quite simple and does not take much time.



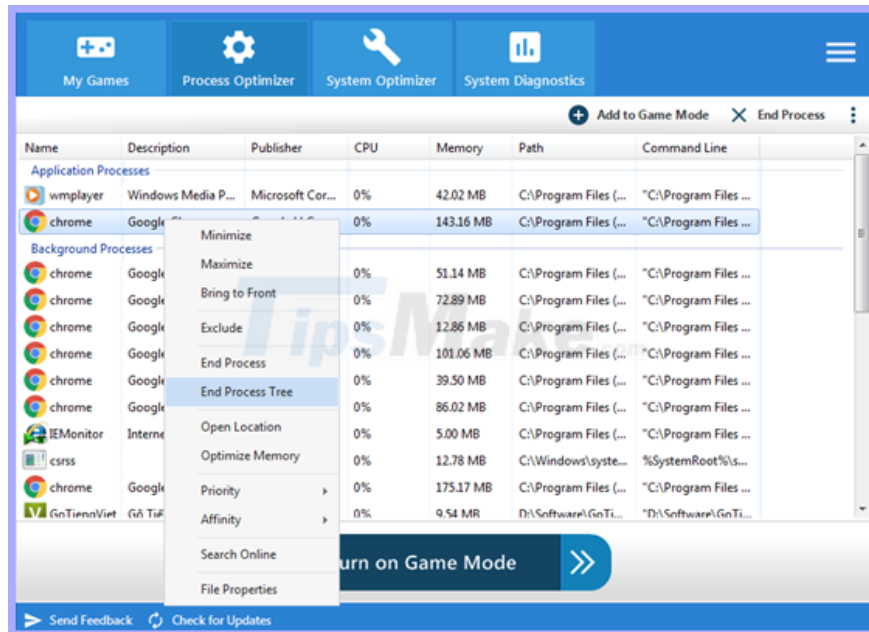
The interface of Game Fire is quite simple with a big and impressive Game Mode main function button. However, you should first add the Game to Game Fire by clicking "Scan for Games" to enable scanning and add games automatically. If you want to add it manually, click "Add Game".



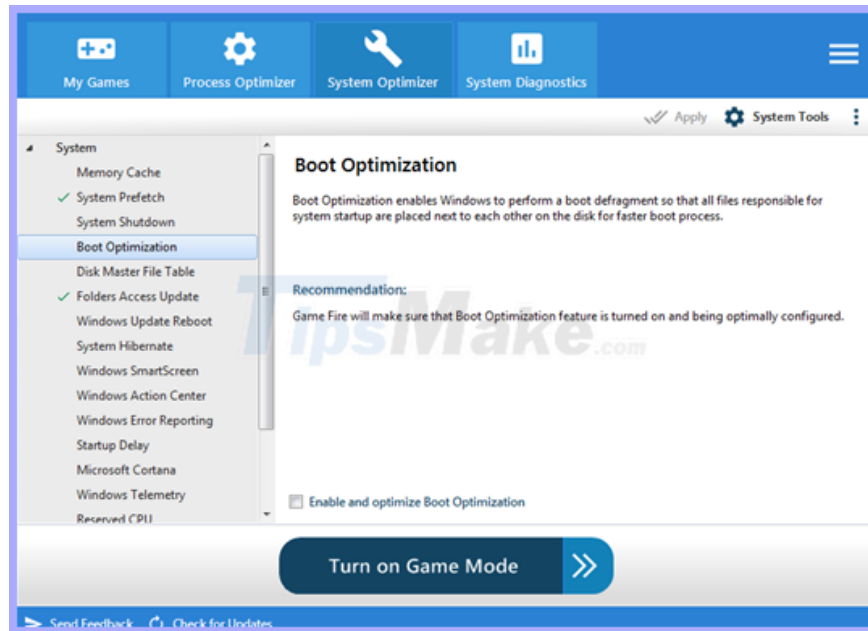
The game more dialog box will appear and you proceed to set up more manual.



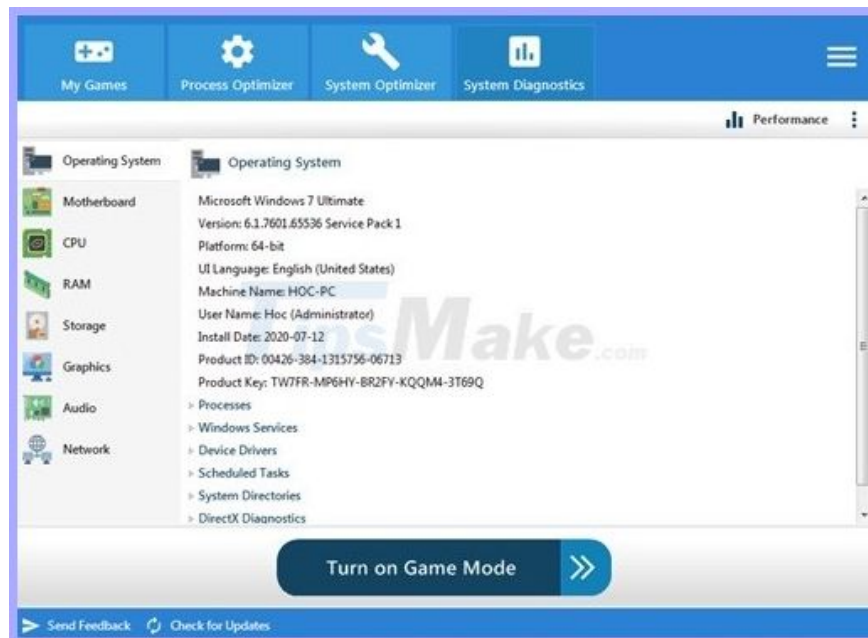
Process Optimizer will display the current background processes on the system.



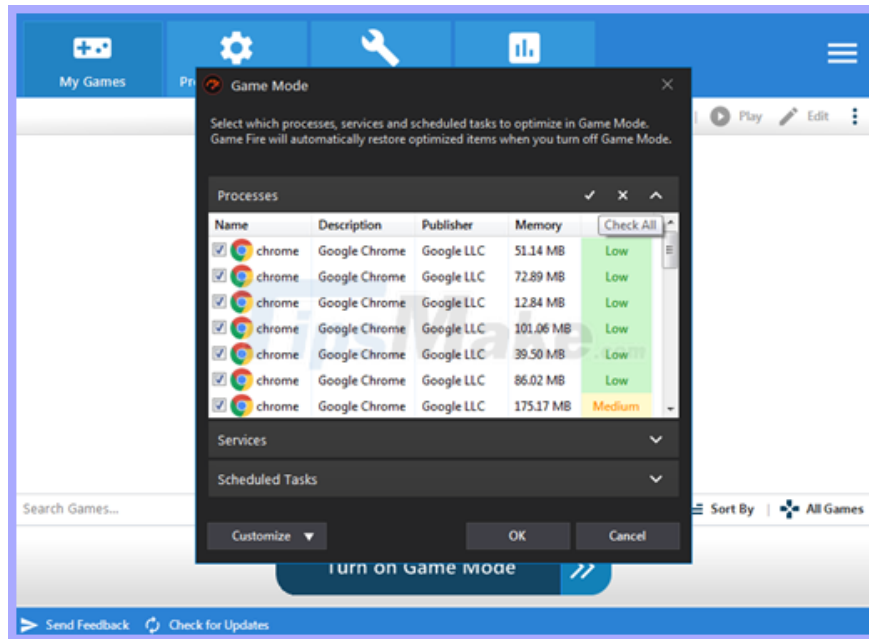
From there you can manipulate the same as in Task Manager.



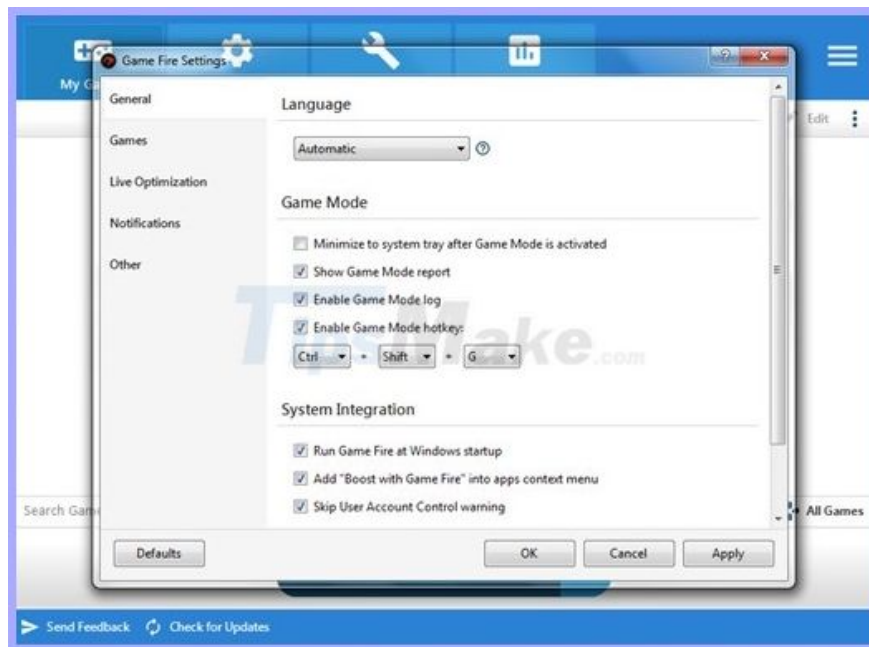
System Optimizer will provide in-depth settings to optimize system and speed up game processing.



System Diagnostics will display the hardware specifications of the computer.



Return to the Game Mode function, when activated, the setup window will appear. Displays processes that are running in the background and the option allows you to stop these processes to prioritize speeding and processing the game.



Besides, Game Fire also provides additional options to activate Game Mode through a combination of shortcuts.

Game Fire generally provides very safe computer tweaks, without any overclocking being done on hardware and all the changes made by Game Fire to system settings only. is temporary so you have peace of mind for long-term use.

You finished reading the article "**How to optimize the gaming performance for computers with weak configuration**" edited by the [TipsMake](#) team. We hope this article has provided you with many useful tech tips and tricks. You can search for similar articles on tips and guides. Thank you for reading and for following us regularly.

---