

How to Open MDF Files

This wikiHow teaches you how to mount a Media Descriptor File (MDF) using Windows or macOS. An MDF file is a disc image (like an ISO) made with a Windows application called Alcohol 120%. The contents of the disc image will be accessible...

Method 1 of 2:

Using Alcohol Portable for Windows

The screenshot shows the Alcohol Soft website. At the top, there is a navigation menu with links for 'HOME', 'BUY NOW', 'DOWNLOAD TRIAL', 'RESELLER', and 'SUPPORT'. Below the navigation is a large banner featuring a red suitcase with a white 'A' logo and a 'NEW' starburst. A prominent black button with a red arrow pointing down says 'DOWNLOAD 100% FREE!'. Below the banner, the text describes 'ALCOHOL PORTABLE' as a virtual drive software that requires no installation. It mentions that the software is 100% clean and works with Windows 10. A 'Download' button with a green arrow is visible on the right side of the page. The page also features a 'WINDOWS CERTIFIED' logo and a 'wikiHow' watermark.

1.

Go to https://www.alcohol-soft.com/alcohol_portable.php. Alcohol Portable is a free tool that allows you to mount MDF files on your PC.

1. Since the app is portable, you can opt to install it on a USB drive. This is useful if you want to mount MDFs on other PCs without downloading and installing an app.

ALCOHOL SOFT

FORUMS Customer Login

HOME BUY NOW DOWNLOAD TRIAL RESELLER SUPPORT



ALCOHOL PORTABLE

Alcohol Portable is a Virtual drive software that requires **NO** installation to your system and can be completely added and removed with a click of the button.

As Alcohol Portable is not installed, but runs as a service on your system, it leaves no footprint and can even be installed directly from a USB drive or SD Card.

With no 3rd party software, or ad-ons it is 100% clean, and even works with Windows 10.

To completely remove Alcohol Portable you simply select "Exit and Remove Device Driver and Service" and its completely gone from your system, no registry files added or any unwanted services.

Download

WINDOWS CERTIFIED

SCREENSHOTS

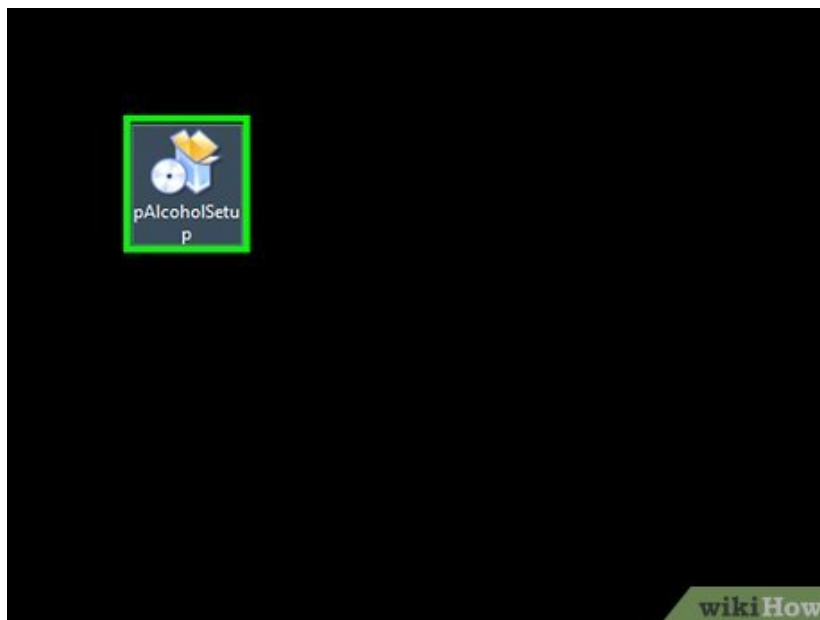


2.

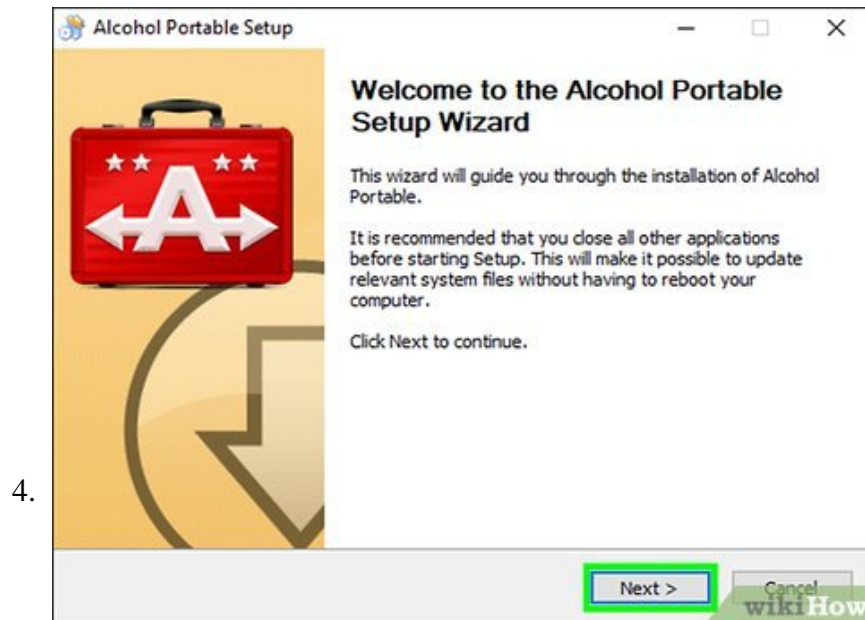
Click **Download**. It's the green button on the right side of the page. This redirects you to a page that should automatically download the setup file to your computer.

1. If you see the "Save As" window appear, select your **Downloads** folder in the left panel and click **Save**.

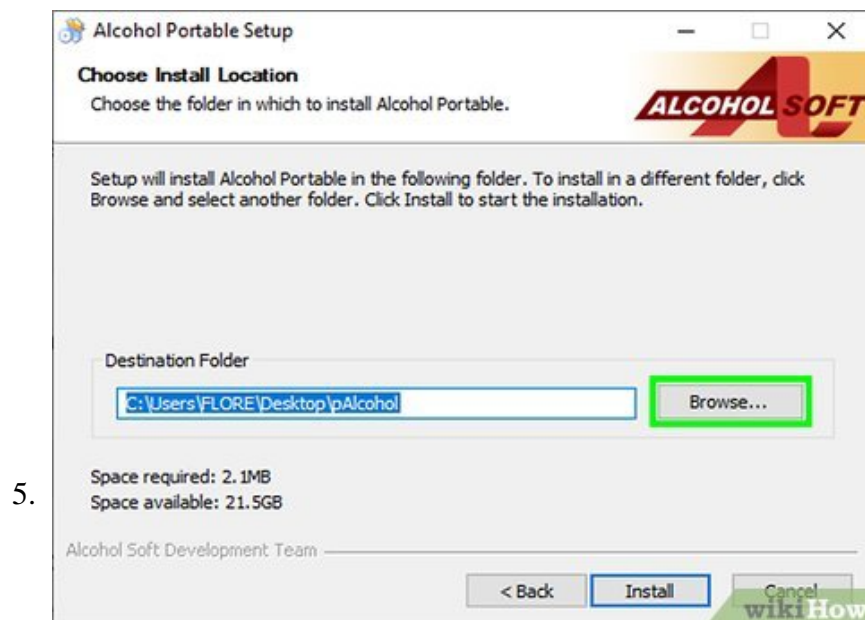
3.



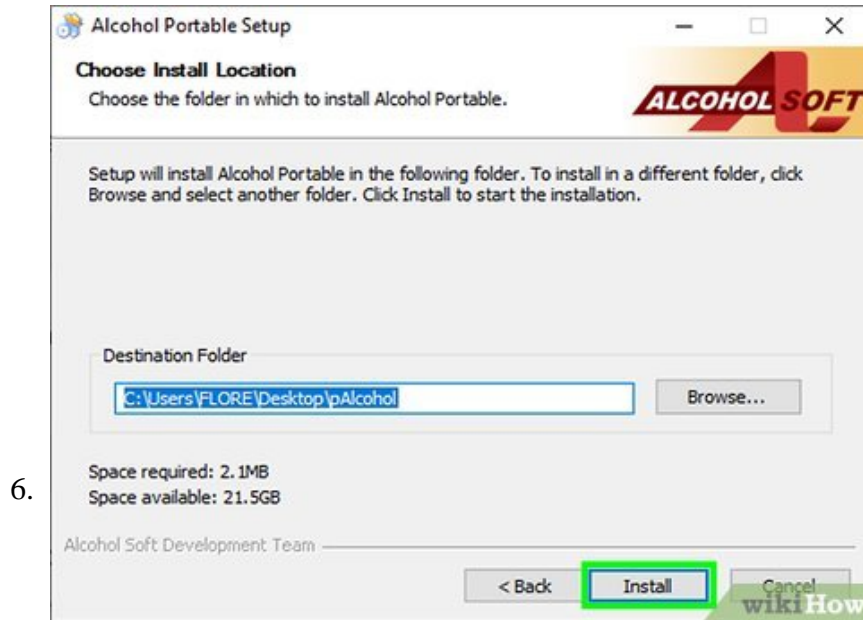
Open **pAlcoholSetup.exe**. You can usually click the file's name at the bottom of your web browser once the download is complete. If you don't see it, open your Downloads folder and double-click the file called **pAlcoholSetup.exe**.



Click on the Welcome screen.



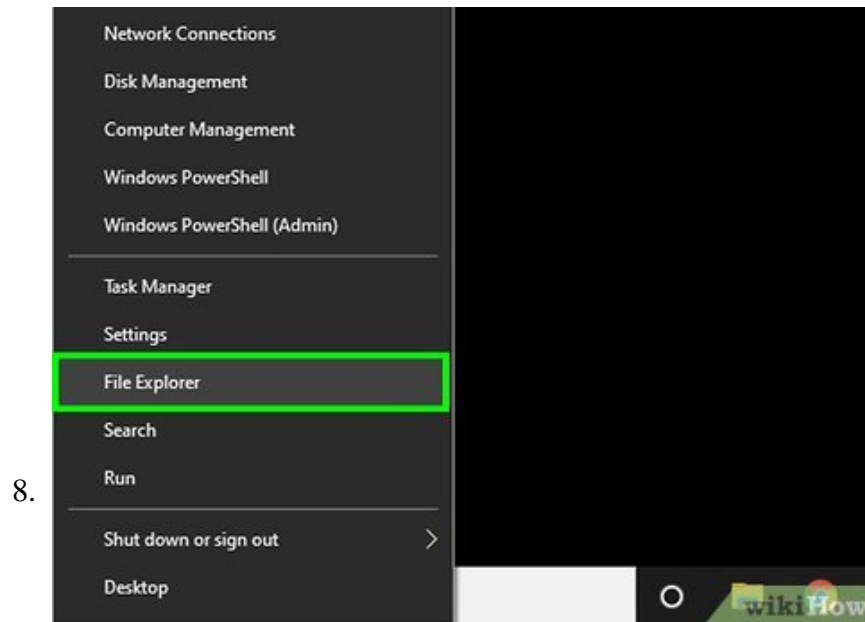
Select an install location. You can keep the default location if you wish. If you want to install the app on a USB drive, connect the drive to your PC, click , and then select your USB drive.



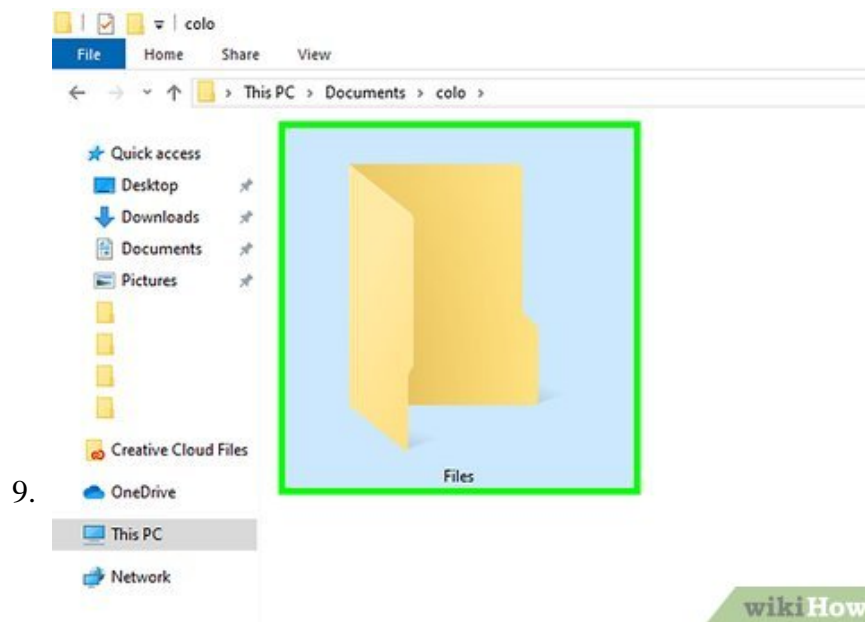
Click **Install**. This really just copies the portable app to the selected location.



Click **Finish** to launch the app. You may have to give the app permission to run the first time you launch it.

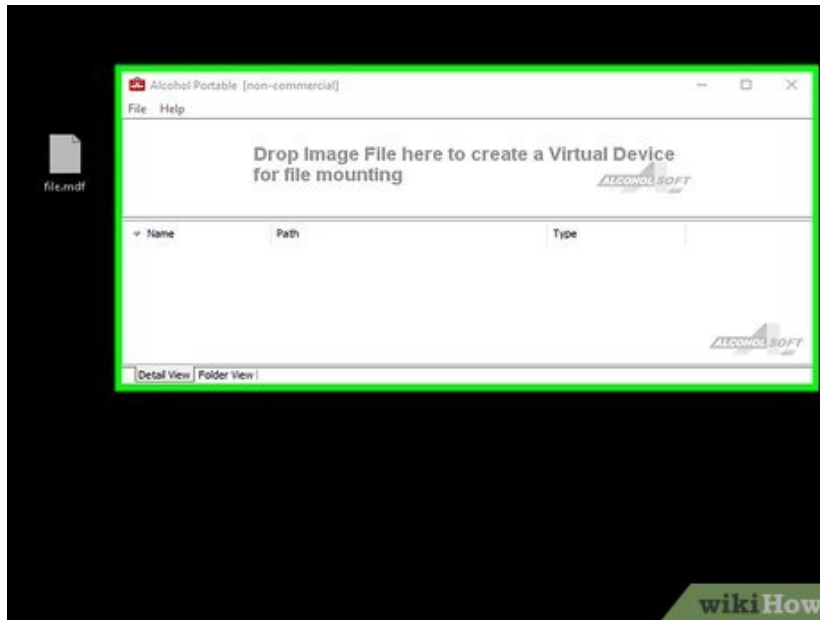


Open the Windows File Explorer. You can do this by pressing `?Win + E` or by clicking the folder icon on the left side of the Start menu.



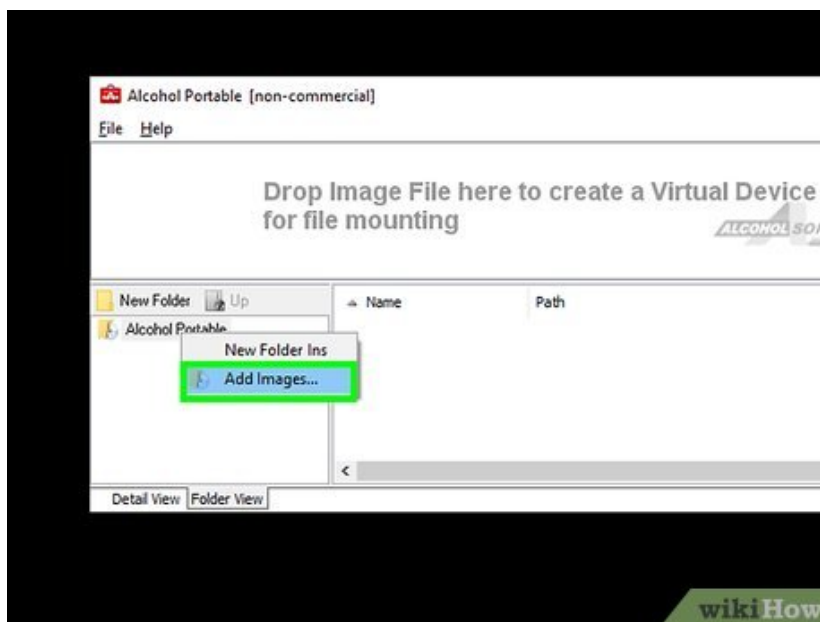
Open the folder that contains the MDF file. If you downloaded the file from the internet you'll likely find it in the Downloads folder. The filename ends with the ".mdf" extension.

10.



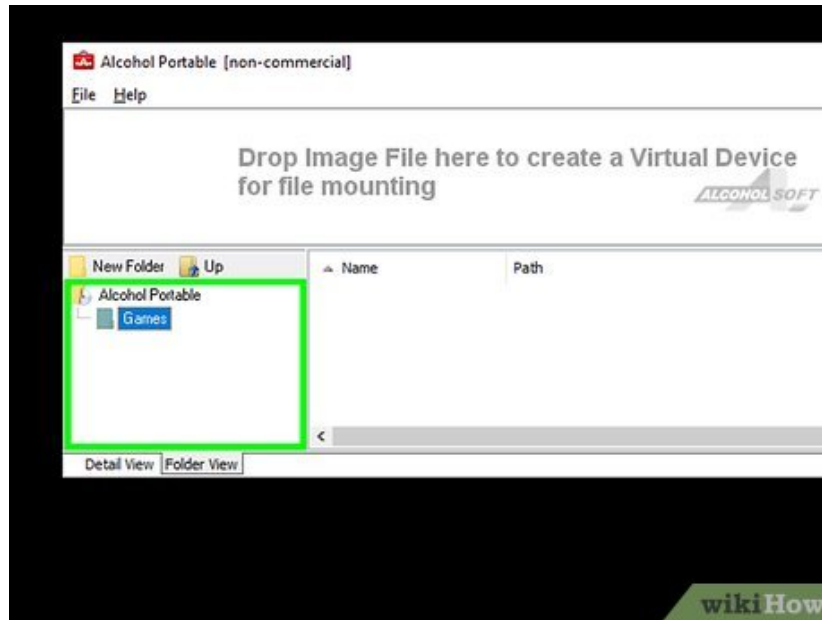
Drag the MDF file into Alcohol Portable. You can drop the file right onto the area that says "Drop Image File Here to create a Virtual Device for file mounting." An icon that looks like a DVD will appear.

11.



Right-click the DVD icon and select **Mount Image File.** This mounts the MDF to your computer like a hard drive. A letter will be assigned to this virtual drive, sort of like your C: or D: drive. A folder will also appear in the bottom panel.

12.



Double-click the folder in the bottom panel. This displays the contents of the MDF file.

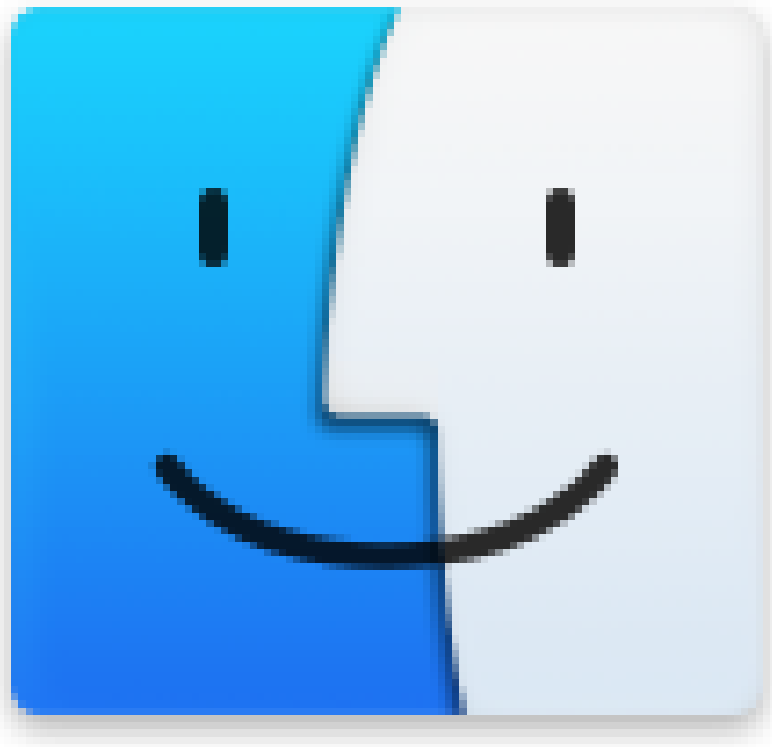
Method 2 of 2:

Using Disk Utility on macOS

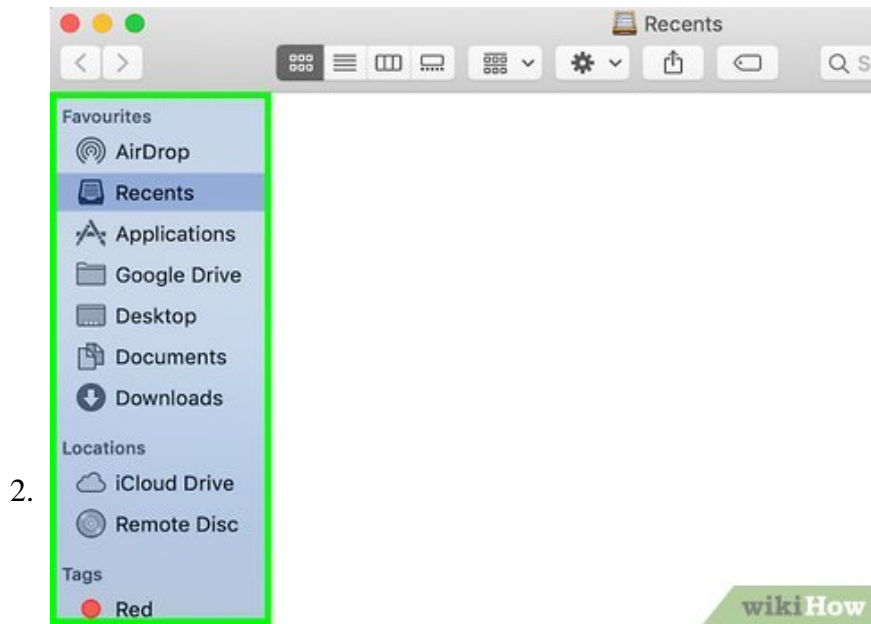
1.



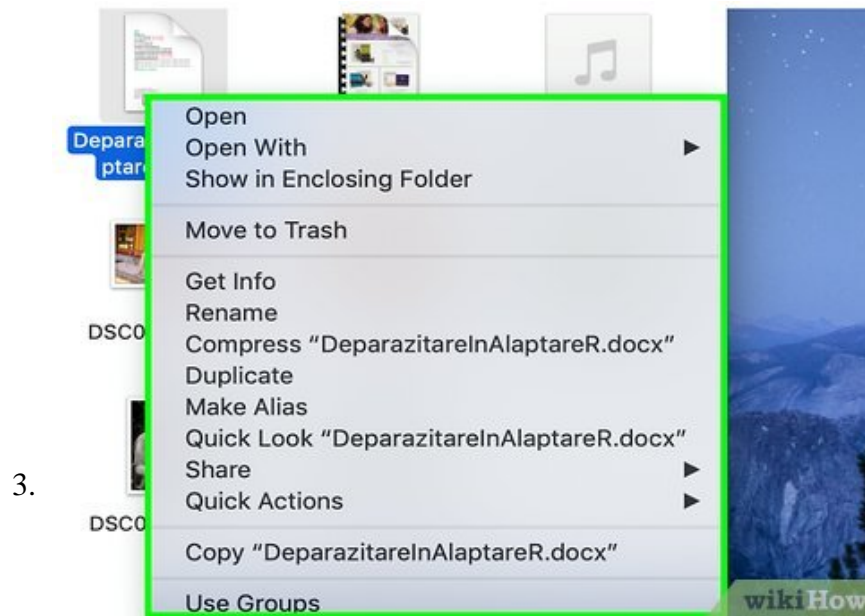
Open Finder



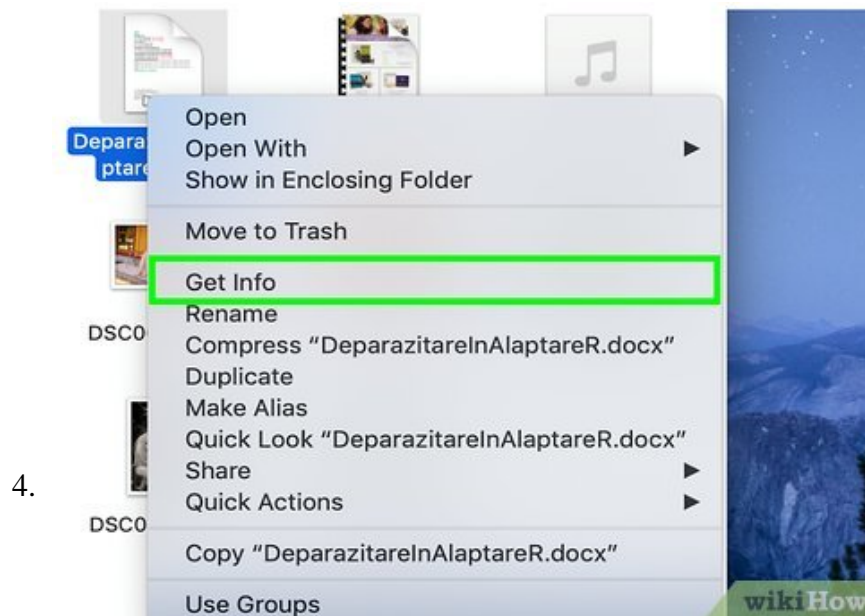
on your Mac. It's the first icon on the Dock, which is usually at the bottom of the screen.



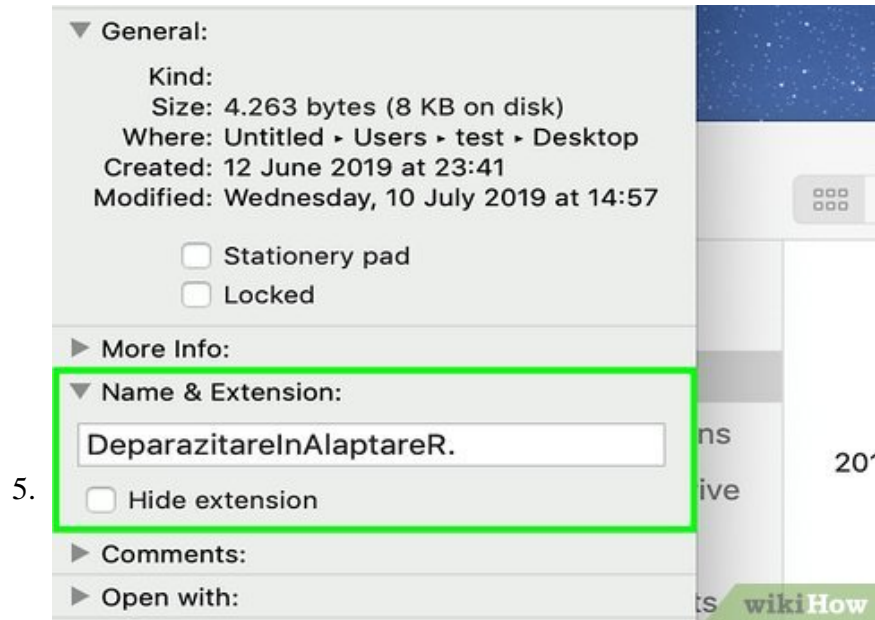
Open the folder containing the MDF file. The filename ends with the ".mdf" extension.



Hold **Ctrl** as you click the **MDF** file. A menu will expand.

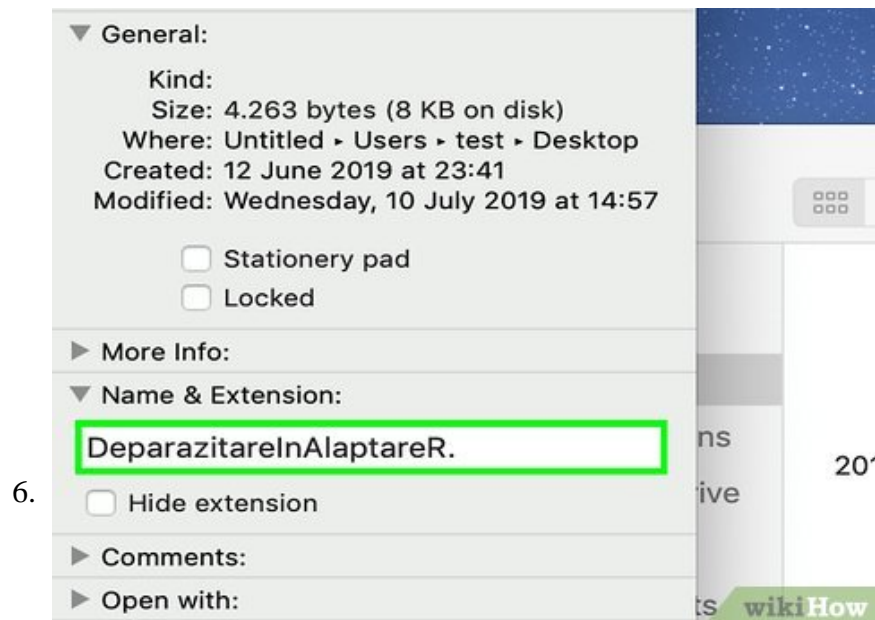


Click **Get Info** on the menu. A panel with information about the file will appear.

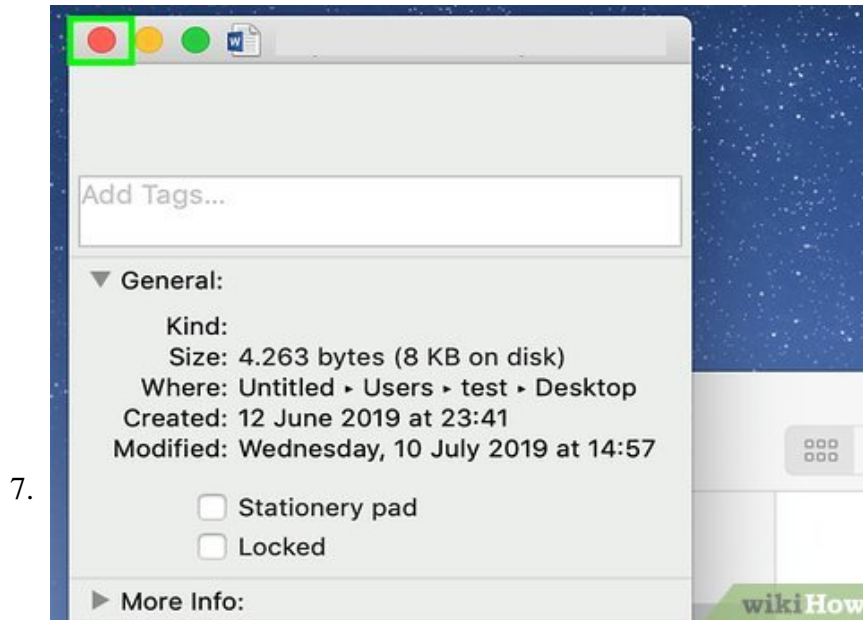


Click the arrow next to "Name & Extension." It's toward the top of the panel. This displays the file name (which ends with .mdf) in a box.

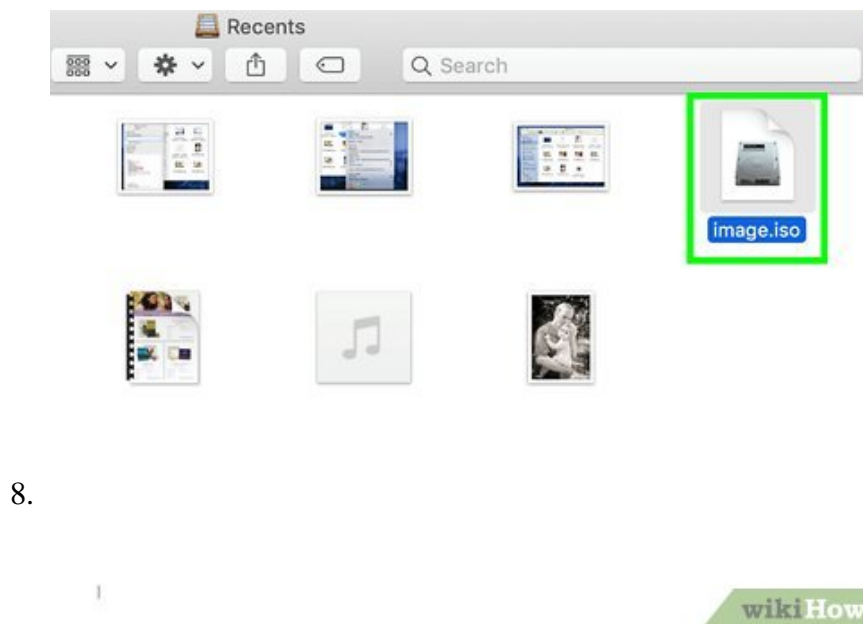
1. If you don't see the ".mdf" part of the file name, remove the checkmark from the "Hide extension" box.



Replace .mdf with .iso . Since these file types are so similar, changing the extension to .iso is all it takes to make the image mountable on your Mac.^[1]



Click the red circle to close the window. It's at the top-left corner of the panel.



Double-click the file you renamed. This mounts the file using Disk Utility on your Mac.

You finished reading the article "**How to Open MDF Files**" edited by the [TipsMake](#) team. We hope this article has provided you with many useful tech tips and tricks. You can search for similar articles on tips and guides. Thank you for reading and for following us regularly.