

How to open Lightroom photos in Photoshop quickly and simply

Opening a Lightroom photo in Photoshop is a simple process that lets you take advantage of the power of both software. This way, you can make deeper edits and apply complex effects that Lightroom doesn't support. Let's explore this combination to improve the quality of your photos.

Although Lightroom and Photoshop both offer users a variety of photo editing options. However, there are some tasks that cannot be performed in Lightroom but require Photoshop and vice versa. In this case, you can consider opening Lightroom photos in Photoshop.

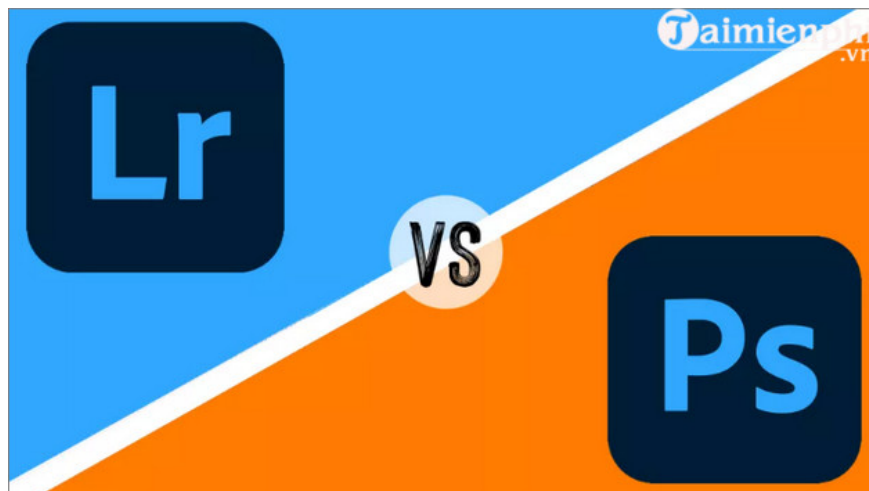
1. Compare Lightroom Classic, Lightroom CC and Photoshop

Lightroom Classic and Lightroom Creative Cloud are both dedicated photo editing software. Lightroom Classic uses local storage when exporting photos and has a slightly different interface than Lightroom CC.

=> [Download link for Adobe Lightroom Classic 2024](#) here.

Lightroom CC works with Adobe Creative Cloud, along with a host of other Creative Cloud software, and uses cloud storage to store files, export settings, and catalogs. However, users need an Internet connection to save photos to cloud services or export to local storage.

=> [Link to download Lightroom CC](#) here.



Photoshop is also a professional image editing software, however, the focus of this software is not entirely on photo editing. Photoshop uses tools including layers, masks, brushes, . to edit the smallest details. The main job

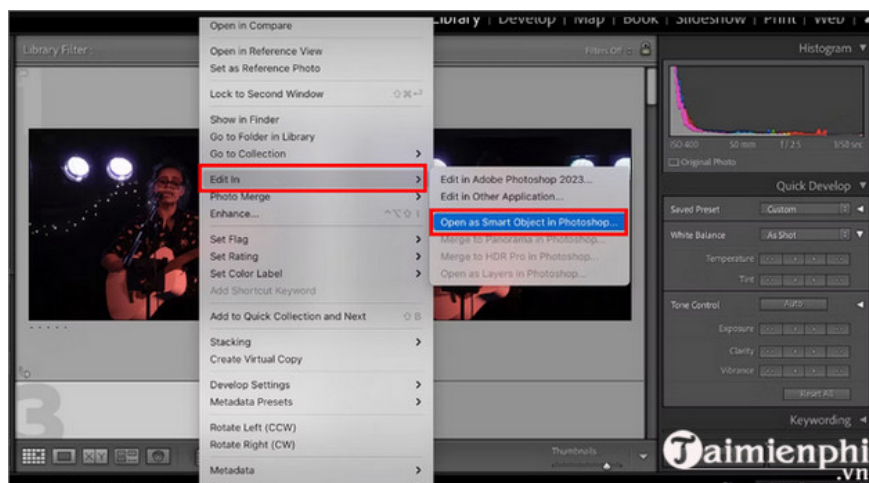
of Photoshop is to process images in detail and for many different purposes instead of just improving the overall image.

=> **Photoshop download** link here.

2. How to open Lightroom photos in Photoshop

After importing your photos into Lightroom Classic, you can easily make preliminary edits to your photos using the Develop module. Then select the photos you want to edit to open them in Photoshop and make further edits.

To do this, all you need to do is right-click on the image and select **Edit In => Open as Smart Object in Photoshop** from the menu that appears on the screen. The Smart Object option helps to keep the edited image quality the same as the original image quality.



Additionally, the **Edit in Adobe Photoshop 2023** option allows you to edit a copy of the photo with 3 different options: edit with Lightroom, edit a copy of the original photo, or edit the original photo.

Once you have selected one of the above 2 options, Photoshop will automatically open the image you have selected. One important note here is that you **must NOT** close the Lightroom Classic window while editing the photo.

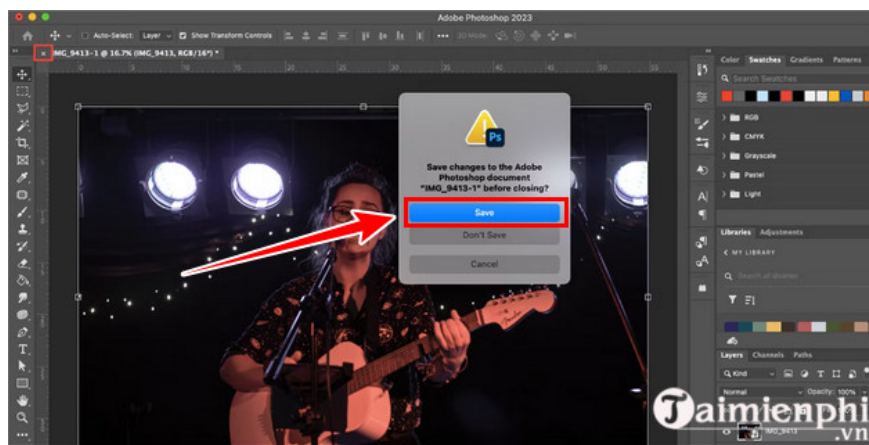


In the Photoshop window, your image will be a Smart Object (if this option is selected) and will be shown with a Smart Object icon on the layer thumbnail.

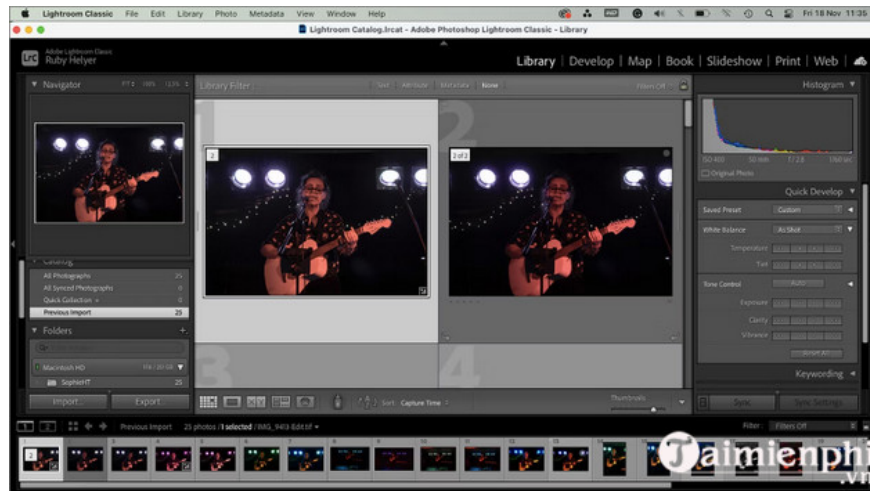
To edit an image, simply double-click the Smart Object icon on the layer to open Camera RAW and edit your image directly. Make your edits in Camera RAW and then click **OK**.



After the photo editing process on Photoshop is complete, click on the **X** icon on the image tab. A notification will appear on the screen, here you find and click on the **Save** option .



Return to the Lightroom Classic window, and your newly edited image will now appear in front of the original version in the Lightroom Classic library.



This will preserve the original version and ensure that no files are overwritten. Finally, select any export option to export your photos from Lightroom Classic. You can also use **Lightroom shortcuts** to speed things up and save time.

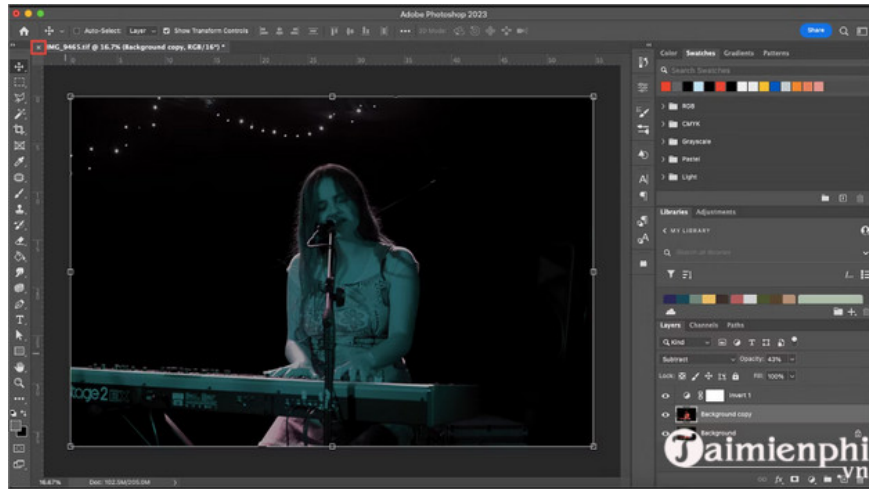
3. How to open Lightroom CC photos in Photoshop

Similar to how to open Lightroom photos in Photoshop, after importing photos into Lightroom CC, you can make any edits and select the photo you want to edit to open in Photoshop.



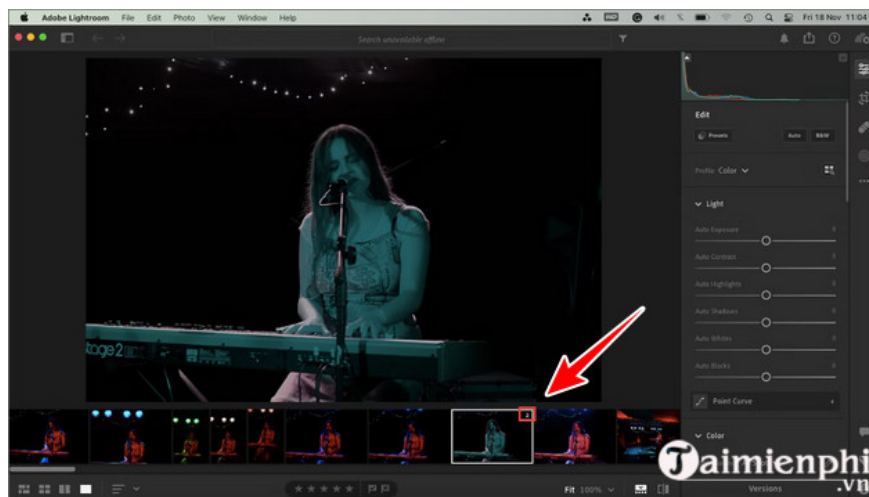
Next, right-click on the image and select the **Edit in Photoshop option**. Keep the Lightroom CC window open on the system to ensure that the connection between the files is maintained.

Your photo will open as a normal Photoshop project and you can make any edits using the Photoshop tools. You can also add other effects if you want.



Once you've finished editing, click the **X icon** on the image tab in Photoshop and select **Save** from the pop-up window. This will automatically reopen the Lightroom CC window.

Initially, your newly edited photo will appear instead of the original photo in Lightroom CC. Click the **2** in the top right corner of the image, this will open both the original photo in Lightroom CC and the edited photo in Photoshop.



Finally, select any export option you want to export photos from Lightroom CC and you're done.

Currently, Lightroom also has versions on Android and iOS to help users edit photos easily, but to use it you need to have an account. Refer to how to register a Lightroom account on Android, iOS here to use.

So TipsMake has guided you through the most detailed ways to open Lightroom photos in Photoshop for editing. Wish you success.

You finished reading the article "**How to open Lightroom photos in Photoshop quickly and simply**" edited by the [TipsMake](#) team. We hope this article has provided you with many useful tech tips and tricks. You can search for similar articles on tips and guides. Thank you for reading and for following us regularly.
