

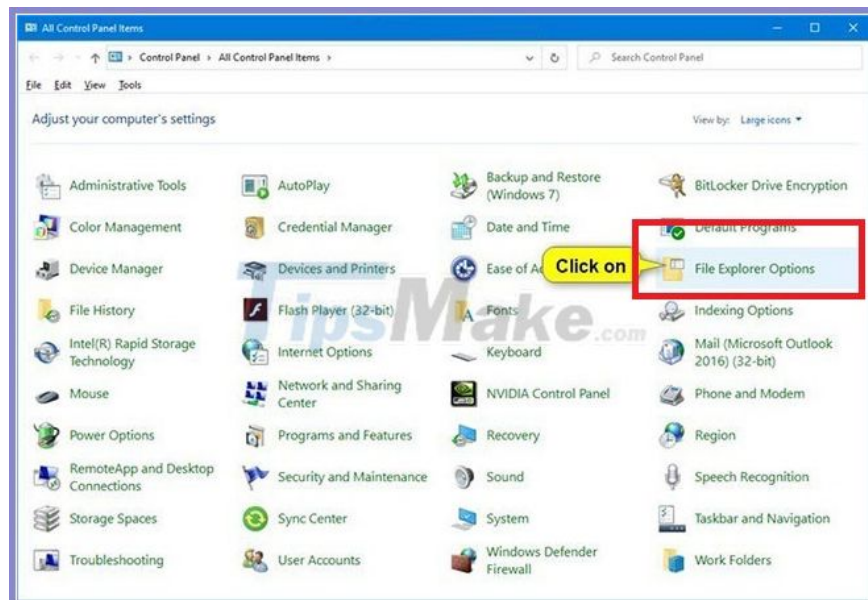
# How to open Folder Options or File Explorer Options in Windows 10

You can use File Explorer Options (aka Folder Options) to change how files and folders work, and how items are displayed on your computer. This tutorial will show you different ways on how to open Folder Options or File Explorer Options in Windows 10.

**Note :** The **Apply to Folders** option will be greyed out, unless you open File Explorer Options from the same folder window in File Explorer that you want to apply to other folders, using the same folder template.

## Open File Explorer Options in Control Panel

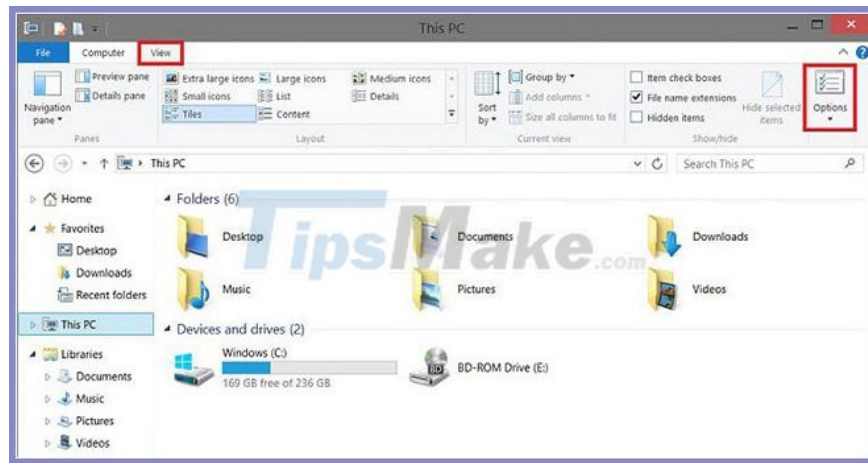
Open Control Panel (icon view) and click the File Explorer Options icon.



Open File Explorer Options in Control Panel

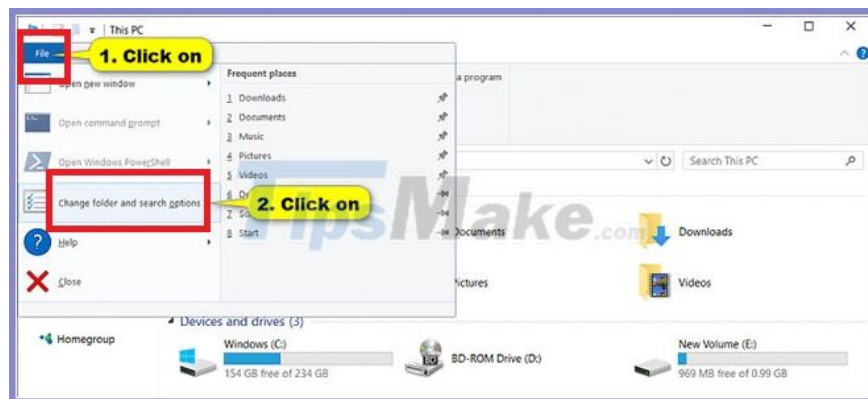
## Open Folder Options in the File Explorer ribbon

1. Open File Explorer ( **Win + E** ).
2. Click the **View** tab and click **Options** in the ribbon.



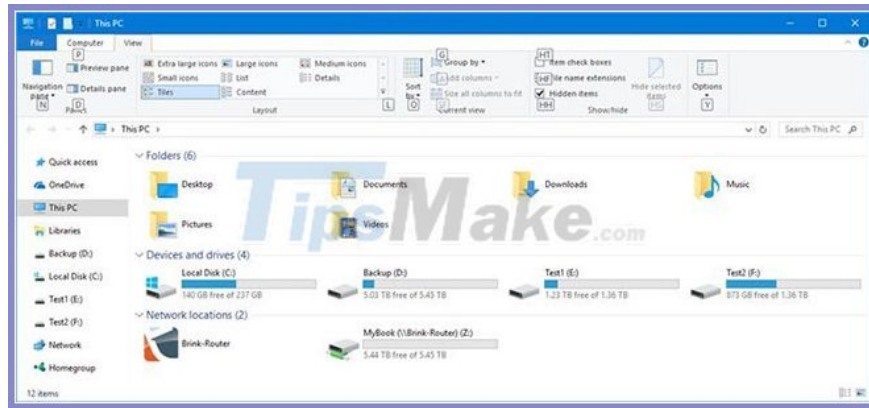
## Open Folder Options in the File Explorer file menu

1. Open **File Explorer** ( **Win + E** ).
2. Click the **File** tab and click **Change folder and search options** in the **File** menu .

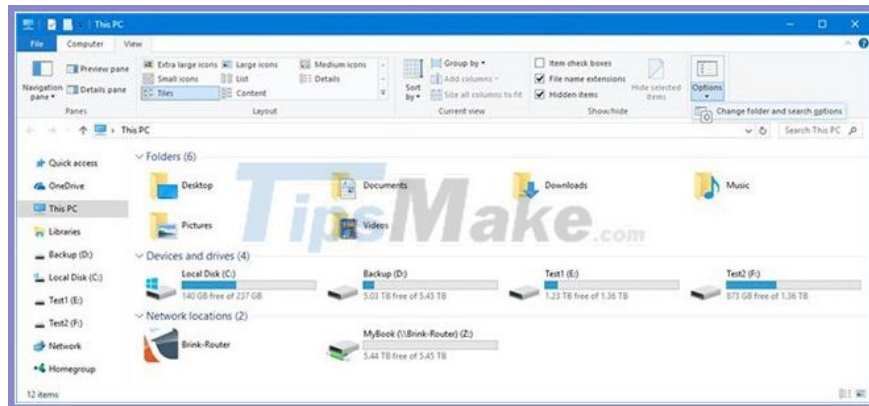


## Open Folder Options in File Explorer using keyboard shortcuts

1. Open **File Explorer** ( **Win + E** ).
2. Press the **Alt + V** keys to view the available keyboard shortcuts in the **View** tab of the ribbon, and then press the **Y** and **O** keys .

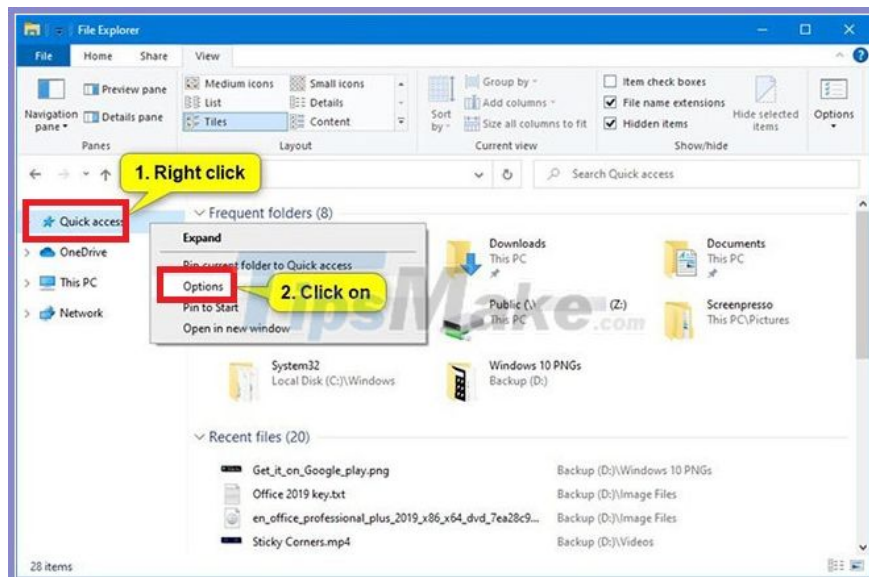


Press the Alt + V keys to see the available keyboard shortcuts in the View tab



## Open Folder Options from Quick Access in File Explorer

1. Open File Explorer ( Win + E ).
2. Right-click or press and hold **Quick Access** in the navigation pane and click **Options**.



You finished reading the article "**How to open Folder Options or File Explorer Options in Windows 10**" edited by the [TipsMake](#) team. We hope this article has provided you with many useful tech tips and tricks. You can search for similar articles on tips and guides. Thank you for reading and for following us regularly.

---