

How to open Bluetooth on Windows 10 - Instructions to turn on, turn off, use Bluetooth on Windows 10

How to open Bluetooth on Windows 10 - Instructions to turn on, turn off, use Bluetooth on Windows 10. Bluetooth technology has brought us a lot of convenience, you can listen to music with convenient bluetooth headsets without worrying. tangled wires or approx

Bluetooth technology has brought us a lot of convenience, you can listen to music with convenient bluetooth headsets without worrying about tangled wires or insufficient wire distance. If you are using a Windows 10 computer that supports bluetooth but you do not know how to turn on (turn off) bluetooth on Windows 10, please see the tutorial below!

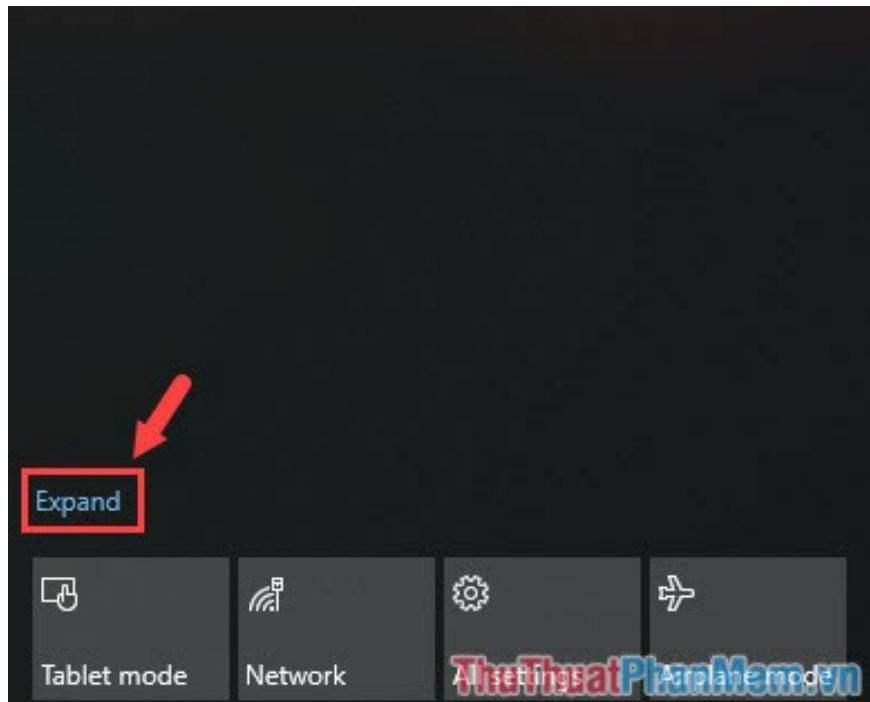


Method 1: Turn on Bluetooth on Windows 10 with Quick Action

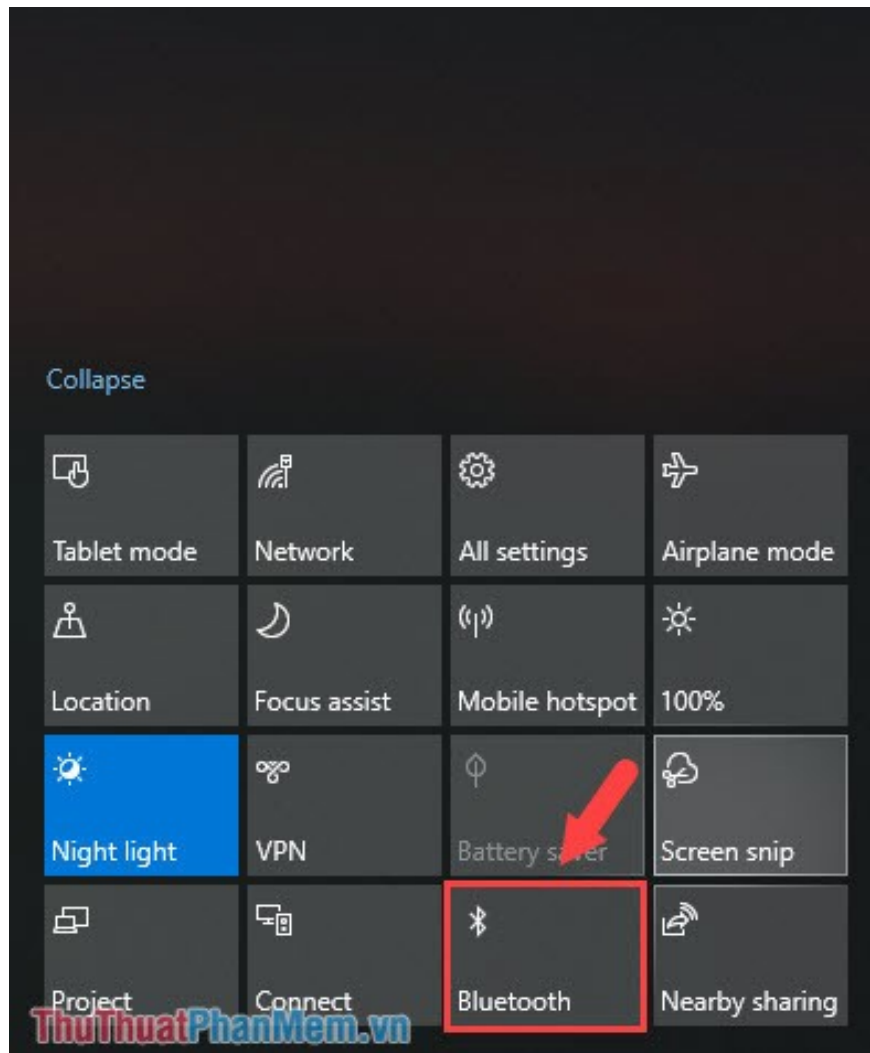
Step 1: Click on the **Quick Action** icon in the bottom right corner of the screen to open **Quick Action & Notification** .



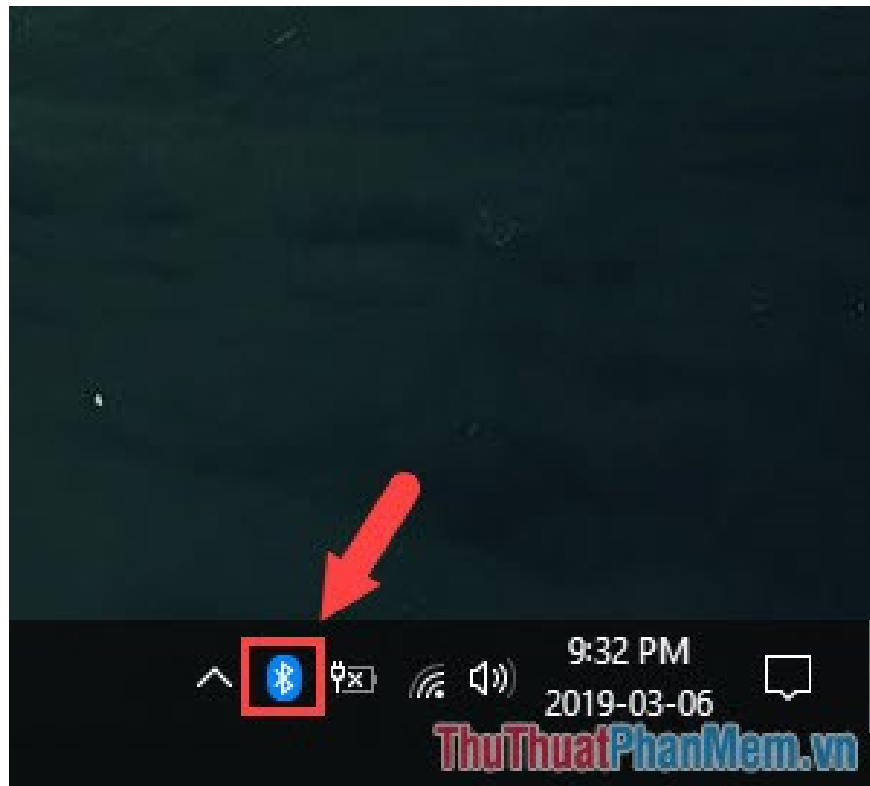
Step 2: Click **Expand** to expand the **Quick Action** bar .



Step 3: Click on **Bluetooth** to turn it on. If the **Bluetooth** box lights up, the bluetooth is on. To turn it off, click again and the gray box will turn off.

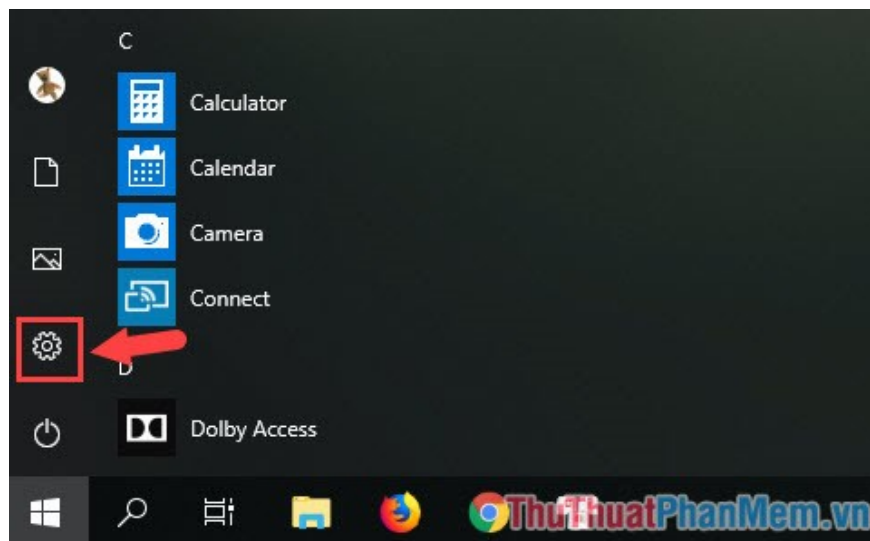


Then you go to the Desktop and notice the Bluetooth icon appears, we have successfully turned on Bluetooth!

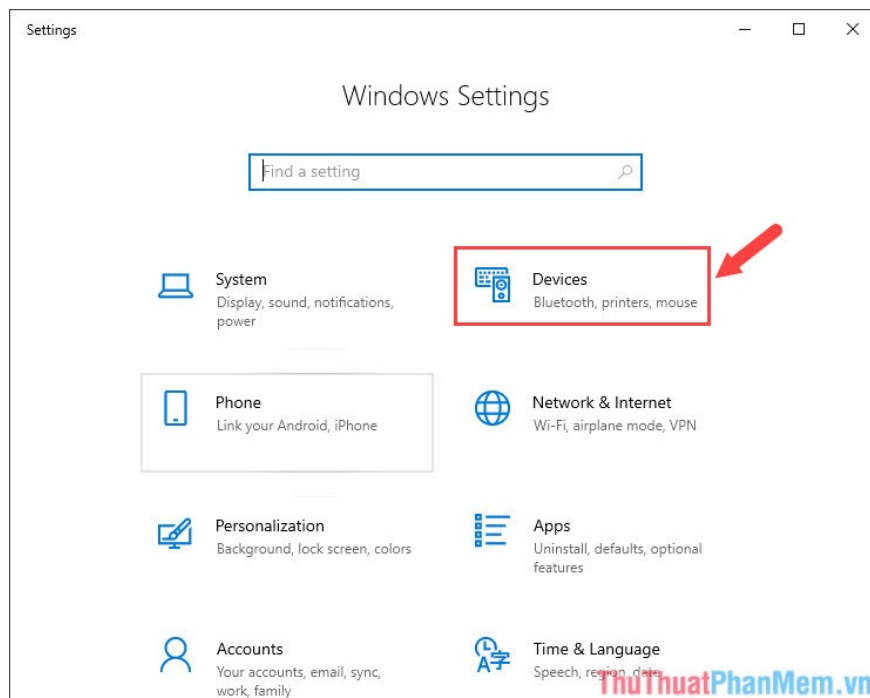


Method 2: Turn on Bluetooth in Windows Settings

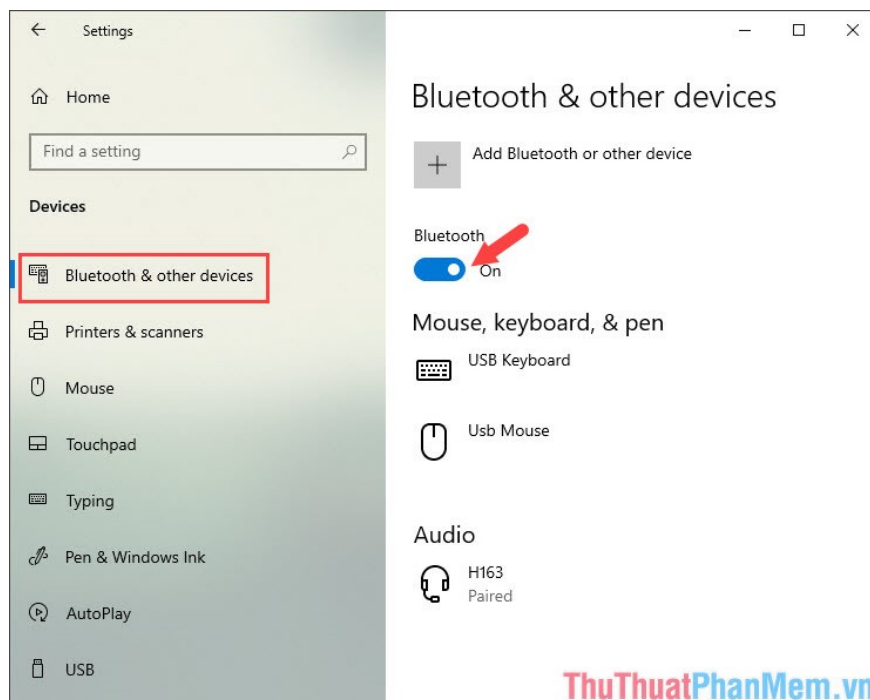
Step 1: Go to Start => Settings .



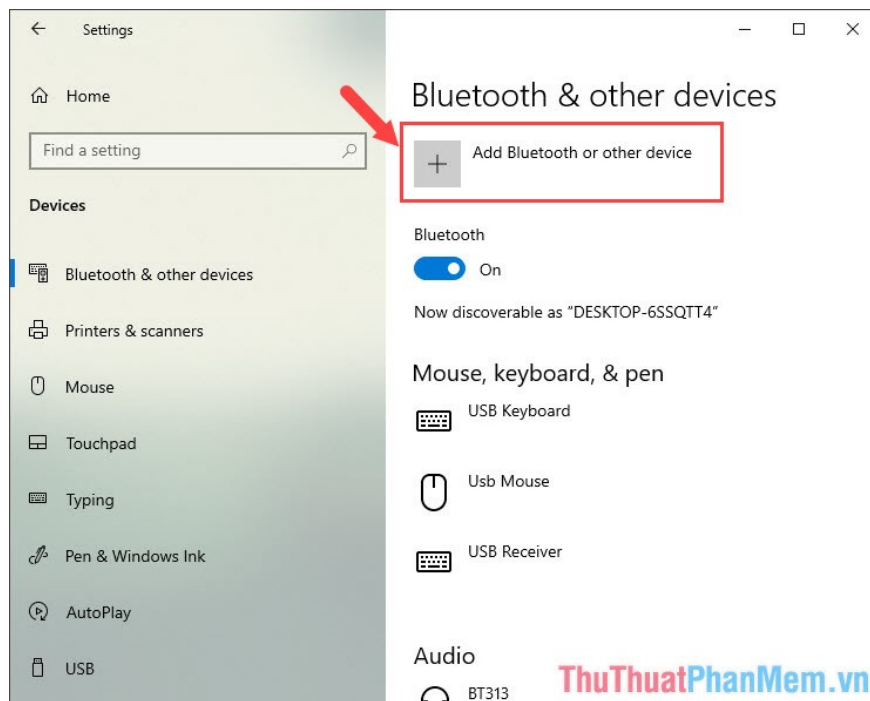
Step 2: Select the **Devices** item .



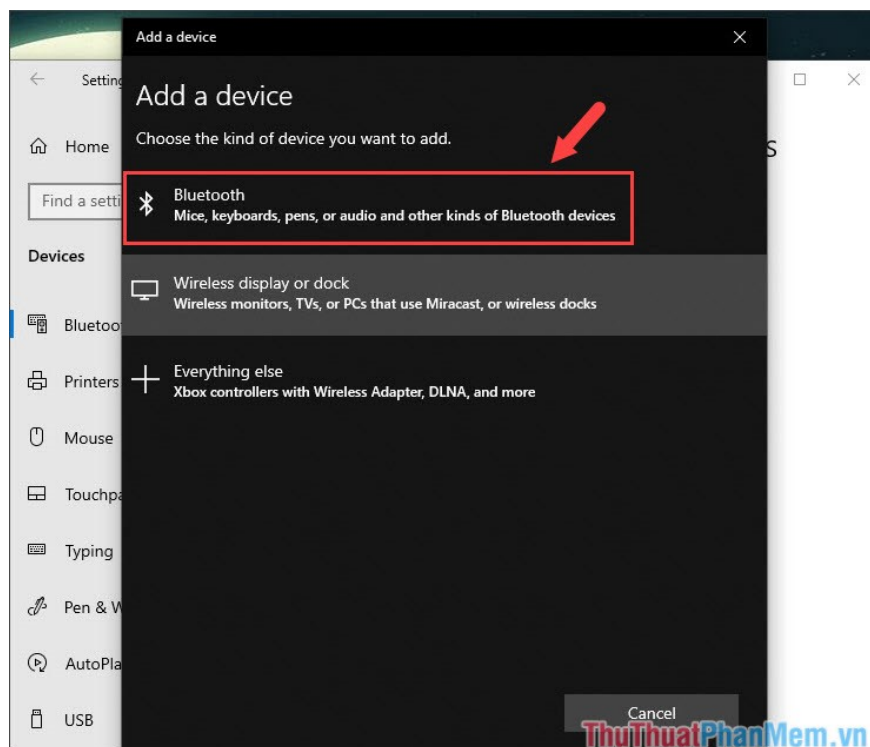
Step 3: Select the **Bluetooth card & other devices** and turn the switch to **On** to turn on. At this point, the Bluetooth icon will display under the system tray is successful.



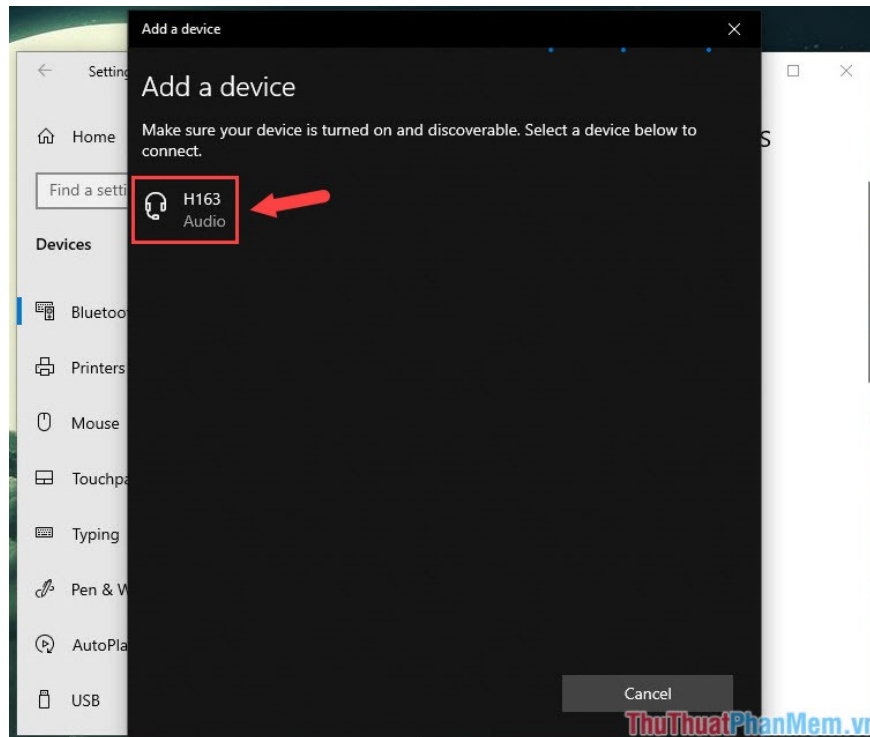
Step 4: To add a Bluetooth device, click **Add Bluetooth or other device** .



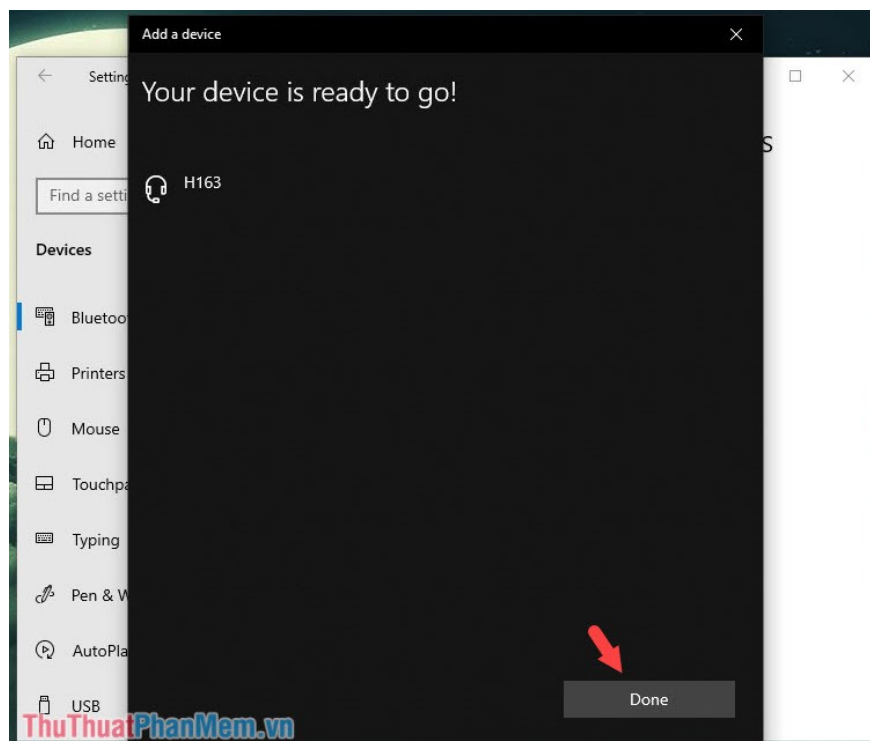
Step 5: You select the first item Bluetooth.



Step 6: After the scan is complete, select the device to connect and click on the device name.



Step 7: After the message *Your device is ready to go!* appears that you have successfully paired the bluetooth device with your computer. Click **Done** to finish.



Unlike Windows 7, Windows 10 will automatically install network and bluetooth drivers for your computer when using the **Windows Update** feature without having to download external drivers like Windows 7.

Remember to visit TipsMake.vn daily to update Update the latest news and tips! I wish you a new day working effectively and dynamically!

You finished reading the article "**How to open Bluetooth on Windows 10 - Instructions to turn on, turn off, use Bluetooth on Windows 10**" edited by the [TipsMake](#) team. We hope this article has provided you with many useful tech tips and tricks. You can search for similar articles on tips and guides. Thank you for reading and for following us regularly.
