

How to open a port with Windows Firewall in Windows 10

If an application or program requires a specific port to be opened, here's how you can use Windows Firewall to open a port in Windows 10.

If an application or program requires a specific port to be opened, here's how you can use Windows Firewall to open a port in Windows 10.

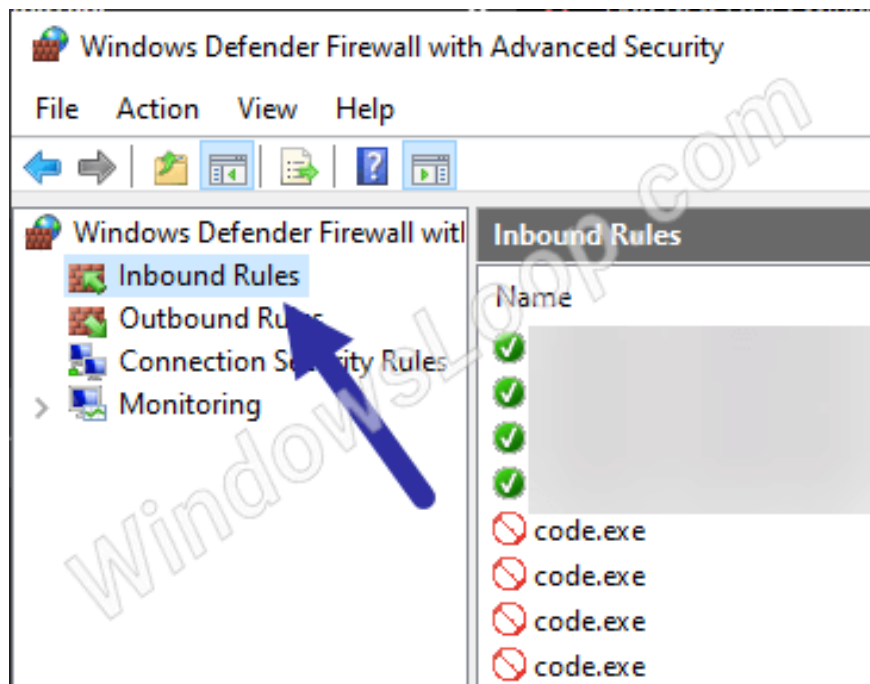
Note: You need admin rights to create, delete or edit Windows Firewall rules.

Steps to open a port in Windows Firewall

To open a port in Windows 10, you need to create custom rules in Windows Firewall. Follow the steps below to create a rule to open ports with Windows Firewall.

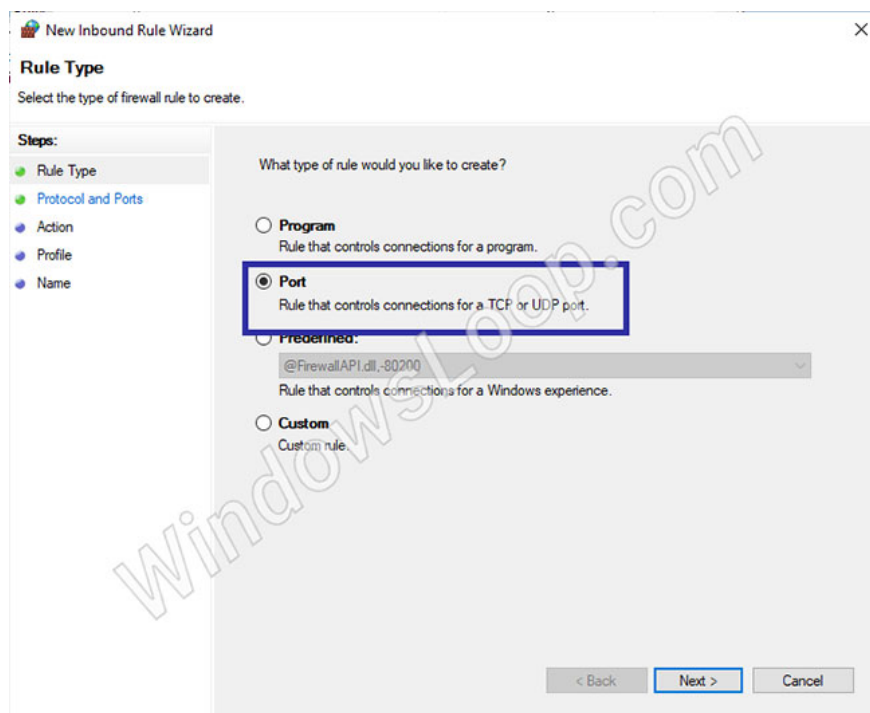
Open ports for Inbound Traffic (traffic generated from the Internet to the server)

1. Open **Start** by pressing the key **Win**.
2. Search for and open "**Windows Defender Firewall**".
3. Click the "**Advanced Settings**" link on the left.
4. Select the "**Inbound Rules**" option on the left.



Select the "Inbound Rules" option

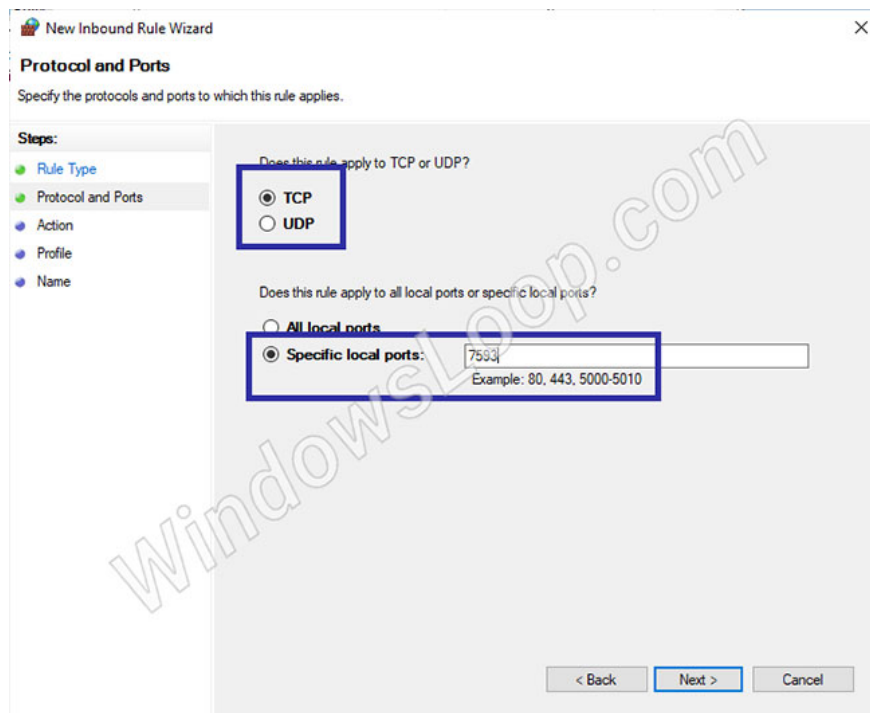
5. In the new window, select the **Port** option and click **Next**.



Select the Port option and click Next

6. Depending on which port you want to open, select "TCP" or "UDP" and click **Next**. In the example case, the author will select the **TCP** option .

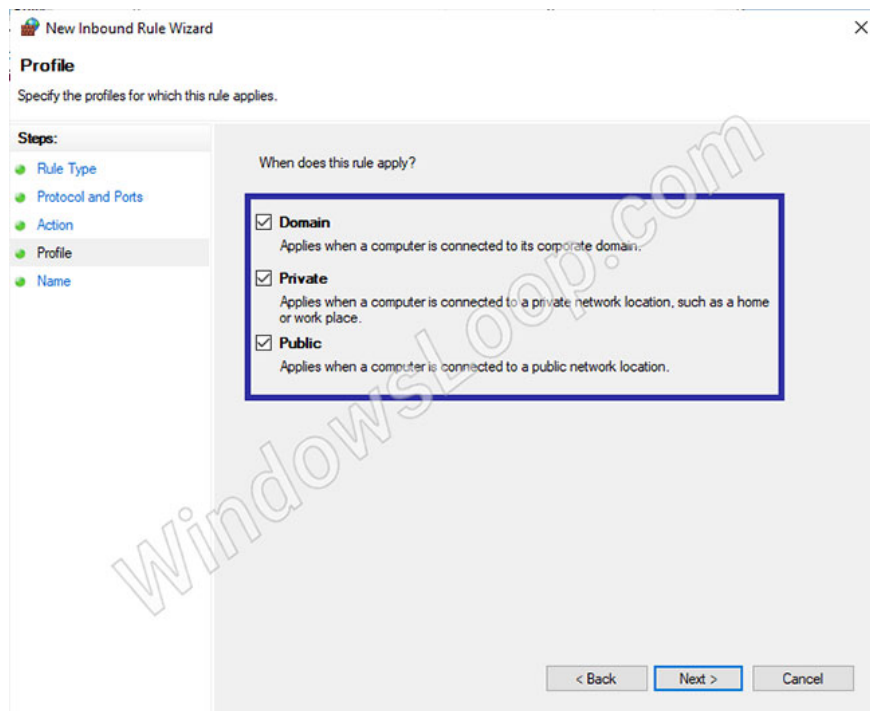
7. Select the **Specific local ports** option and enter the port number you want to open in the blank field. Click **Next**.



Select the Specific local ports option

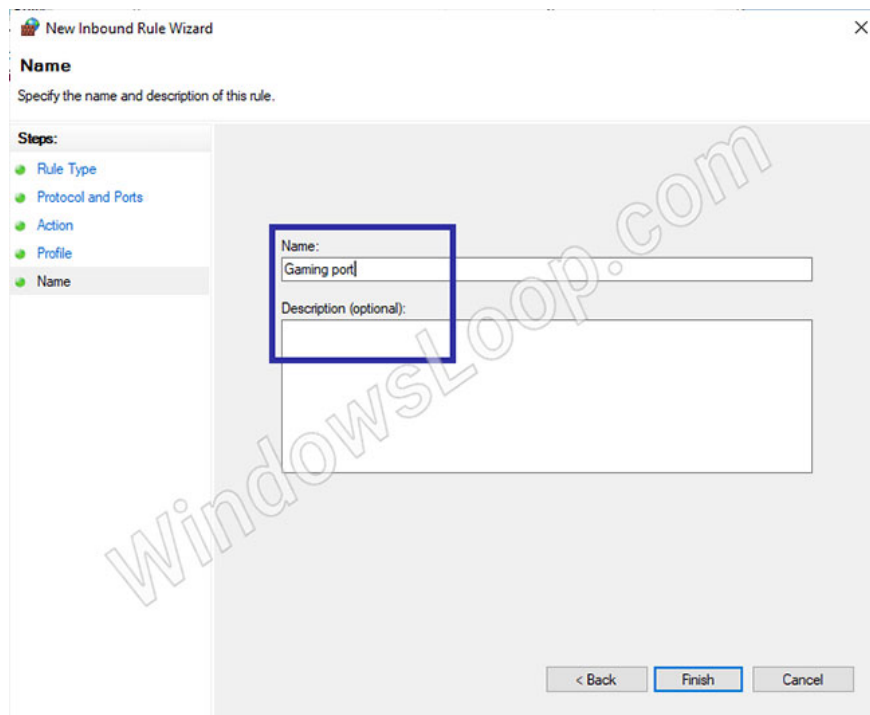
8. Select **Allow the connection** and click **Next**.

9. Select the type of network you want to apply the rule to, and click **Next**.



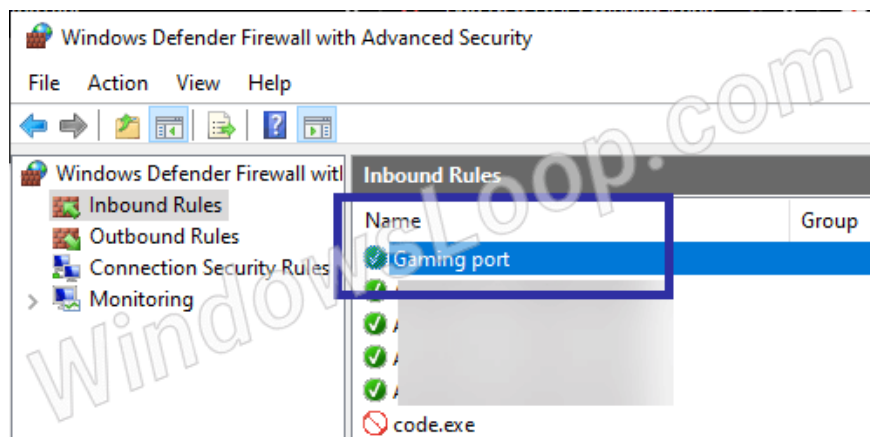
Select the type of network you want to apply the rule to

10. Give a meaningful name and click **Finish**.



Name the rule

You should see the new rule configured in the Windows Firewall rules window.



You should see the new rule configured in the Windows Firewall rules window

Open ports for Outbound Traffic (traffic generated from server to Internet)

To open a port for Outbound Traffic, follow the steps listed below.

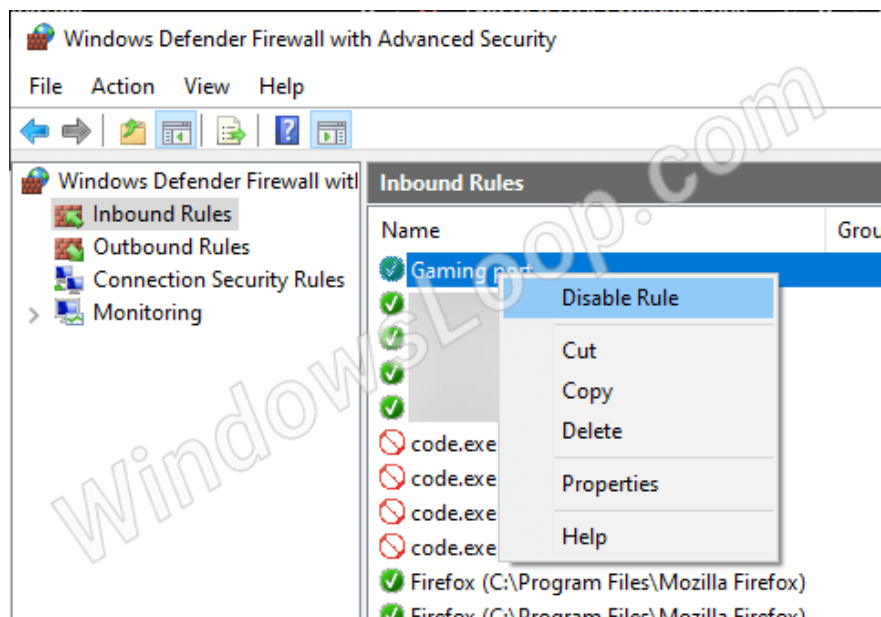
1. Open **Start**.
2. Search and open the **Windows Defender Firewall**.
3. Click **Advanced Settings**.
4. Select **Outbound Rules**.
5. Select the **Port** option and click **Next**.

6. Depending on which port you want to open, select "TCP" or "UDP" and click **Next**.
7. Select the **Specific local ports option** and enter the port number in the blank field. Click **Next**.
8. Select **Allow the connection** and click **Next**.
9. Select the type of network you want to apply the rule to, and click **Next**.
10. Give a meaningful name and click **Finish**.

Disable to delete port opening rule in Windows Firewall

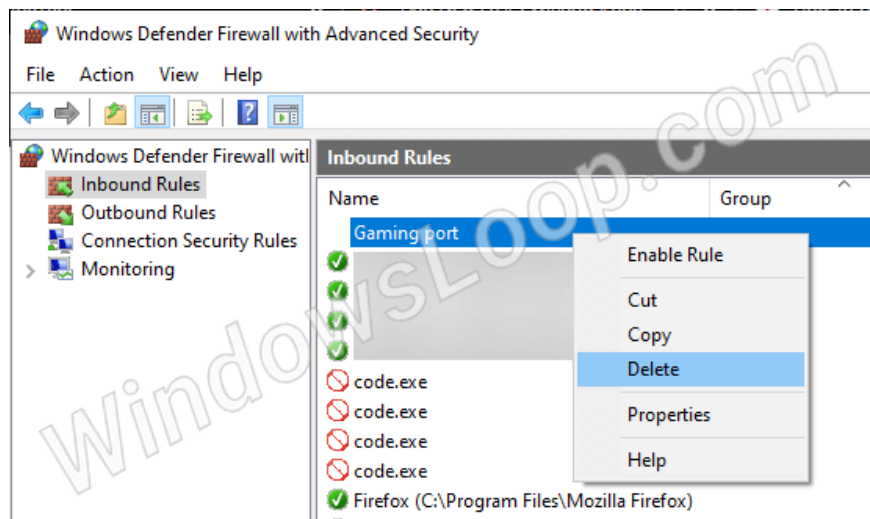
If you no longer need a dedicated rule to open a port, you can disable or delete the rule.

To disable the firewall rule from opening the port, right-click the rule in the settings of the Windows Firewall and select the **Disable Rule** option .



Disable open firewall rules

To delete a rule, right-click on the rule and select the **Delete** option .



Remove firewall rules that open ports

You finished reading the article "**How to open a port with Windows Firewall in Windows 10**" edited by the [TipsMake](#) team. We hope this article has provided you with many useful tech tips and tricks. You can search for similar articles on tips and guides. Thank you for reading and for following us regularly.