

How to move software to another drive right on Windows 10

Using a drive that is too full can sometimes slow down your computer or run into problems when software crashes. Moving software from drive C to another is also a great way to get more free space.

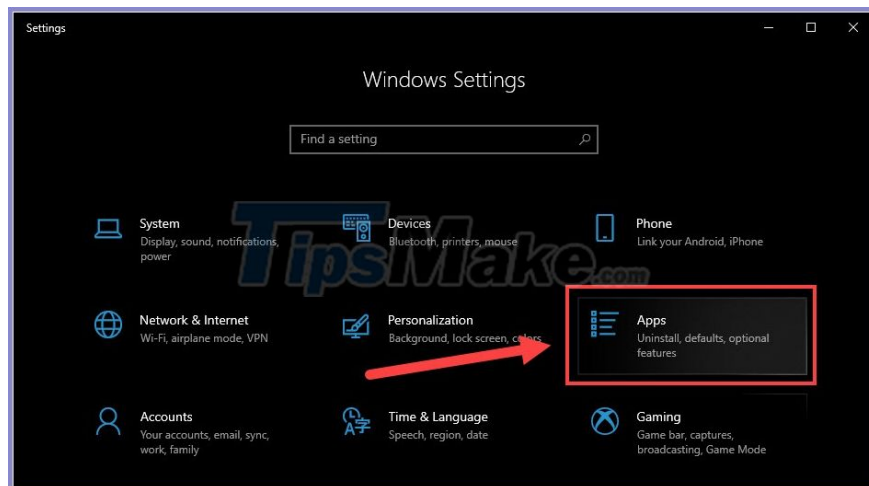
However, the software has so many components that are divided all over the drive, making it difficult to move.

Below is a guide to moving the software to another drive using Windows 10 installation, if you want to use third-party software follow this article.

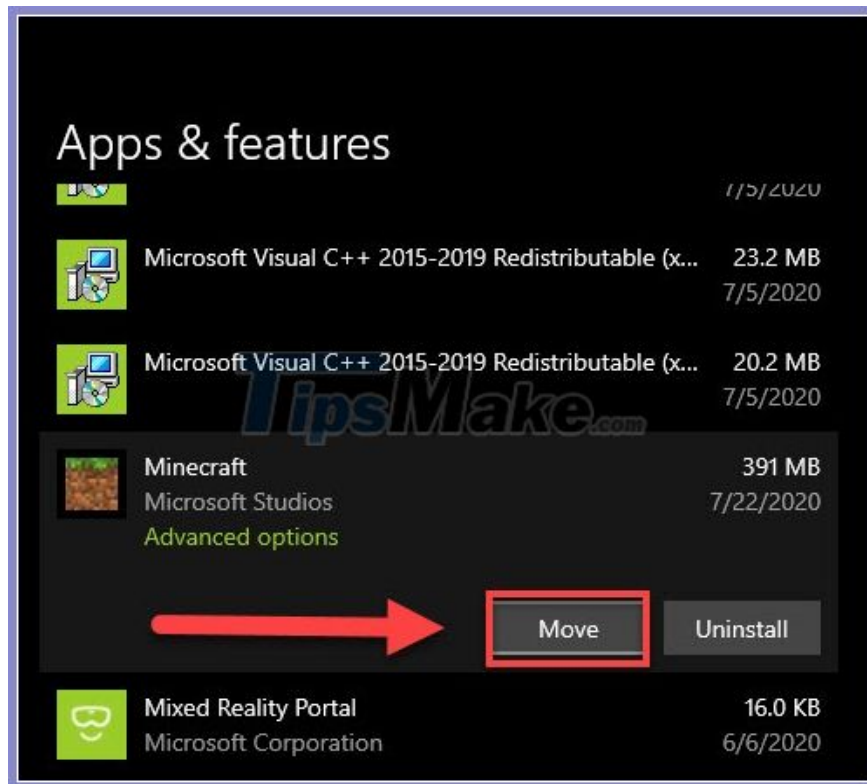
Move apps using Settings on Windows 10

This is the easiest way to move an app from one drive to another on your Windows computer by using Settings. This works for many apps you have installed, but not all.

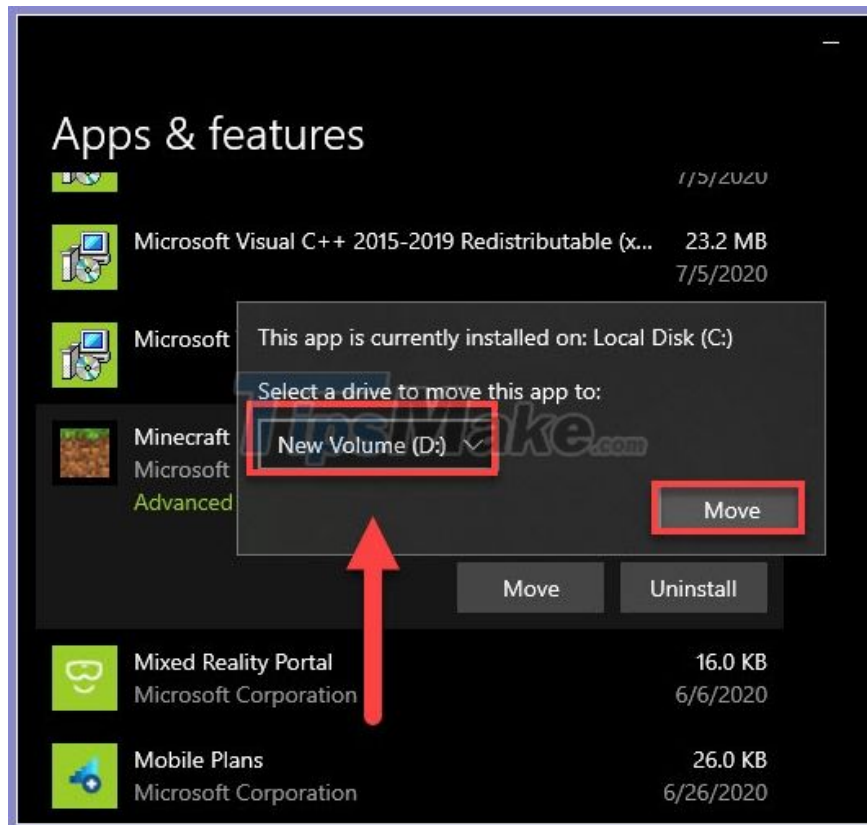
Step 1: Press the **Windows + I** key combination to open Settings. At the main interface you select **Apps** .



Step 2: Navigate to the application you want to move, and select **Move** .



Step 3: Select the drive you want the application to be moved to. Then click **Move** .

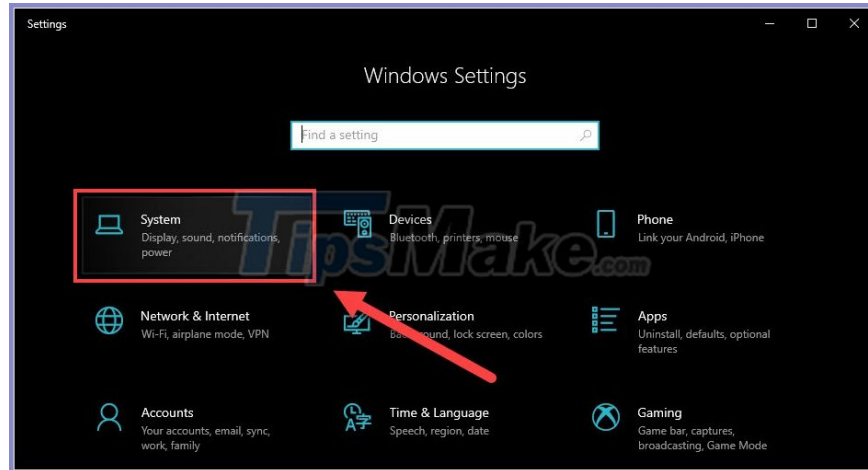


If the Move button is not available for an app, it means the program is a native Windows 10 app and you can't move it.

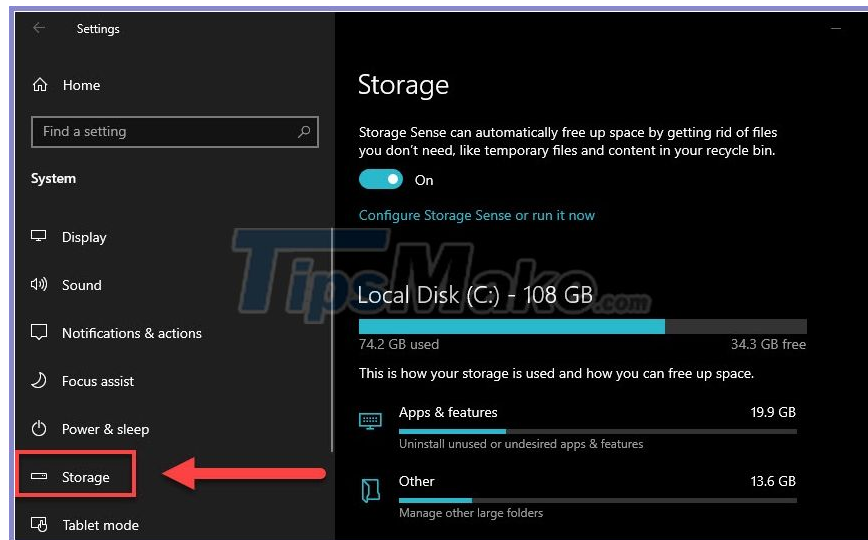
Change installation directory

Moving the file locations of software you have installed on your computer cannot be done by copying and pasting. Each software usually has too many components and in many different places on the drive. Arbitrary movement may cause the software to stop working. Instead, you have an easy way to uninstall the software and reinstall it on another drive. But first change to the default directory used to install new programs.

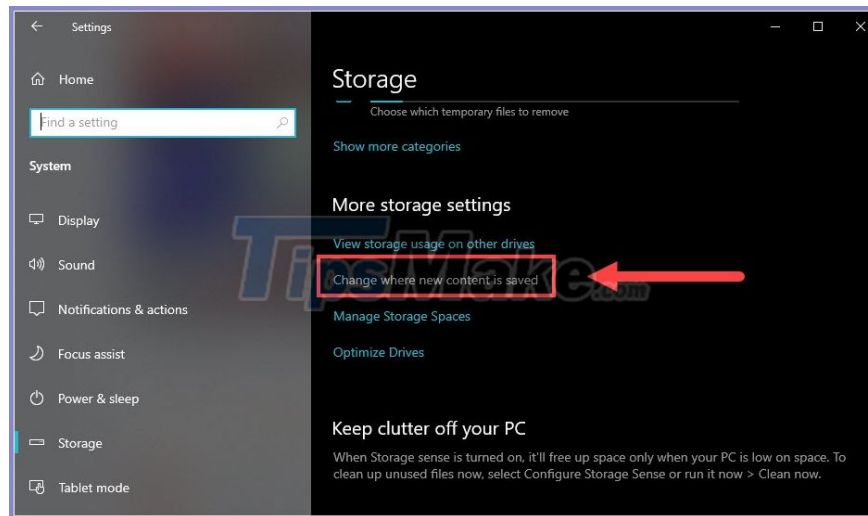
Step 1: Press **Windows + I** to open settings. This time you choose **System** .



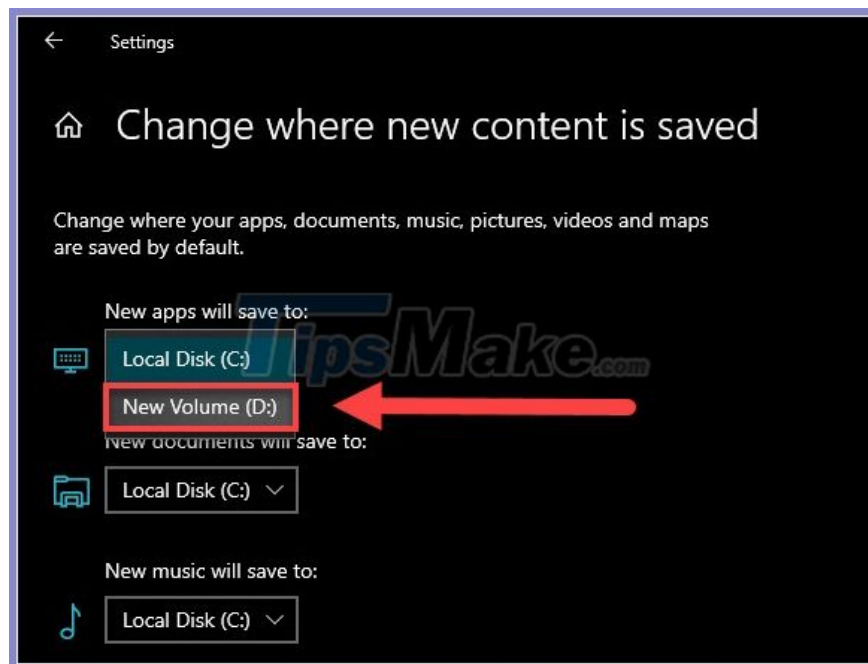
Step 2: Select **Storage** in the menu column.



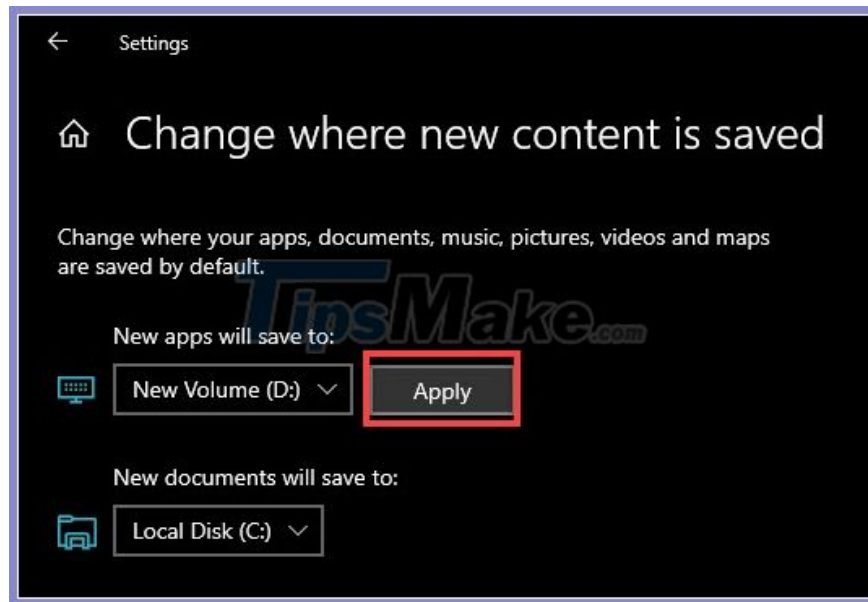
Step 3: Navigate to the **Change where new content is saved** line .



Step 4: In the section **New apps will save to** , choose the drive you want to install the software on instead of drive C.



Finally **Apply** is complete.



After you have changed the default installation drive, uninstall the software and reinstall it. The software will be automatically saved in the new drive.

Good luck!

You finished reading the article "**How to move software to another drive right on Windows 10**" edited by the [TipsMake](#) team. We hope this article has provided you with many useful tech tips and tricks. You can search for similar articles on tips and guides. Thank you for reading and for following us regularly.