

How to map WebDAV drives in Windows 10

Web Authoring Authoring and Versioning (WebDAV) is an HTTP extension, providing a collaborative way to edit and manage files on remote web servers. In this article we will learn how to map WebDAV drives in Windows 10.

Web Authoring Authoring and Versioning (WebDAV) is an HTTP extension, providing a collaborative way to edit and manage files on remote web servers. In this article we will learn how to map WebDAV drives in Windows 10 so you can access files remotely directly in File Explorer.

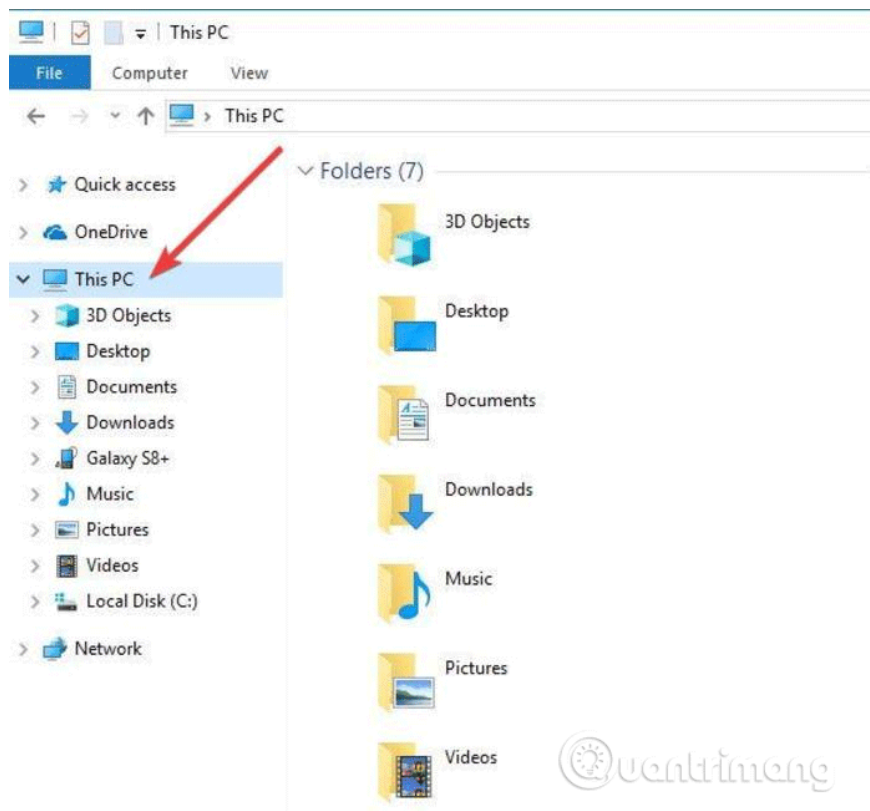
1. 7 best file management software for Windows to replace File Explorer

To connect to the WebDAV folder in Windows 10, you will need the WebDAV website URL, WebDAV account login and shortcut or connection name. All three of this information will allow you to map WebDAV by mounting its directory into a mapped drive so you can view, edit or delete files from the remote web server using your computer.

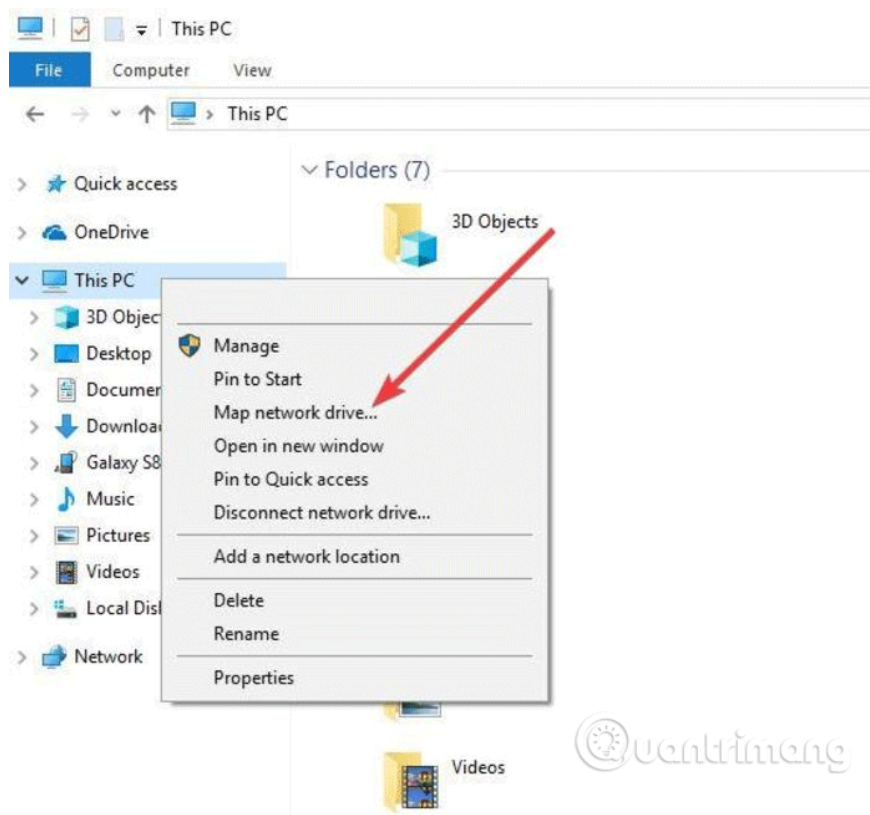
1. How to map network drives in Windows 10
2. How to map network drives with Command Prompt in Windows
3. Map OneDrive as a network drive in Windows 10

How to map WebDAV drives in Windows 10

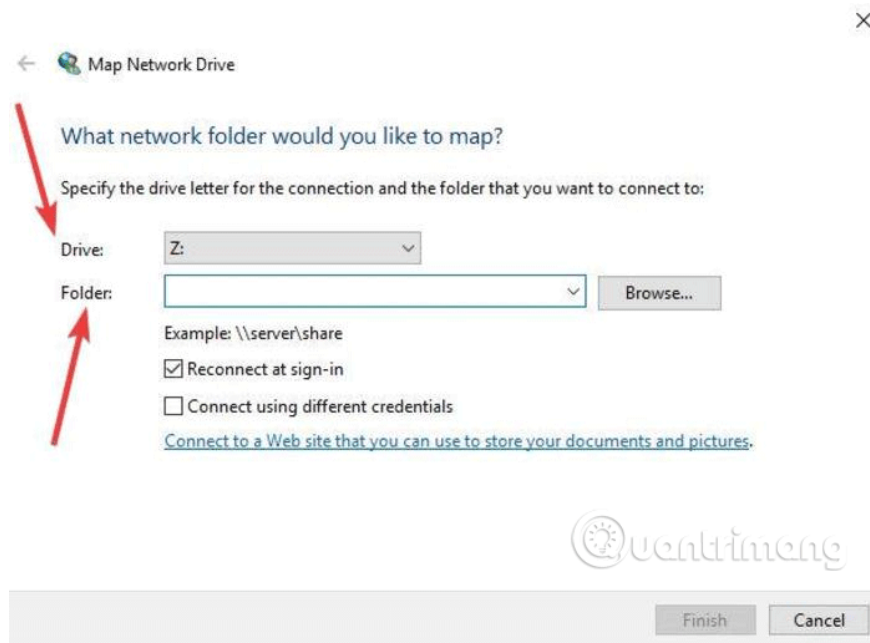
Step 1 . Open File Explorer on your computer and right-click **This PC** .



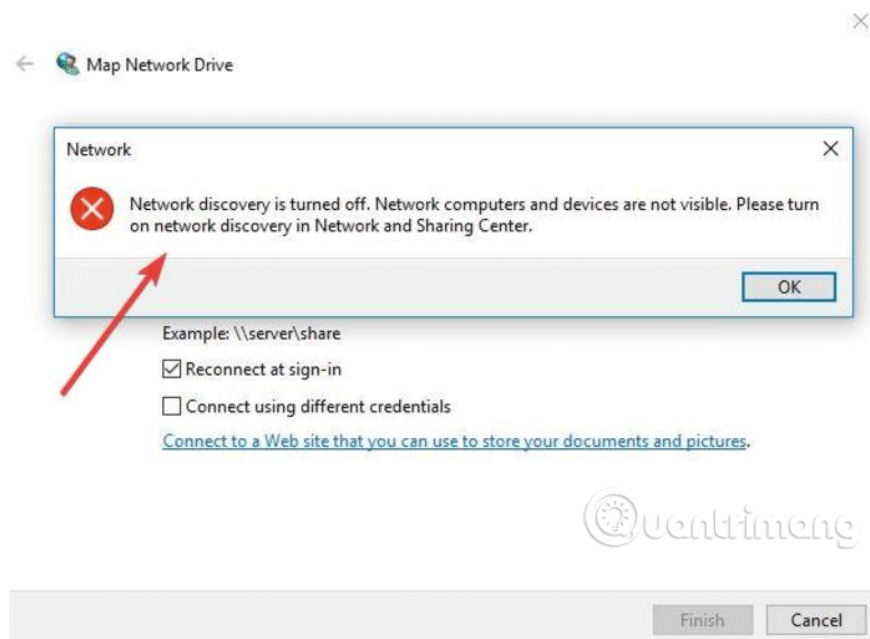
Step 2 . Click on Map network drive .



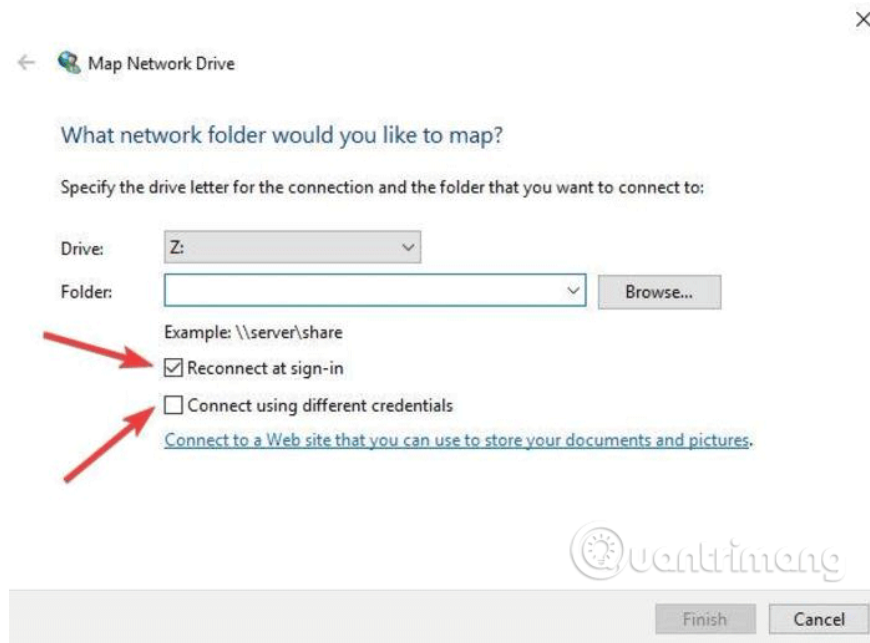
Step 3 . In the new dialog box, enter the drive letter you want to map to and the folder you will add or edit WebDAV files on your local computer.



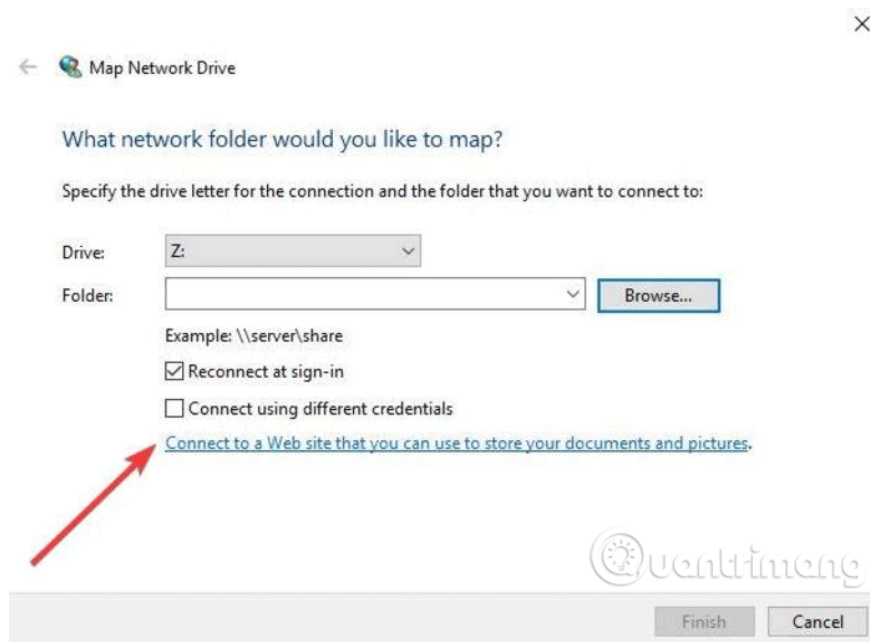
4. If you click on the **Browse** option, next to Folder and receive the message below, turn on **Network discovery** in the **Network and Sharing Center** , then proceed to the next step.



Step 5. Select the option **Reconnect at sign-in** and **Connect using different credentials** . The **Reconnect at sign-in option** allows recovering WebDAV connection when restarting the computer.



Step 6 . Click on the link **to a web site that you can use to store your documents and pictures .**



Step 7 . Click **Next .**

Step 8 . Now, click **Choose a custom network location .**

Step 9 . Click **Next .**

Step 10 . Enter your domain URL in the **Internet** or **Network address field** with the WebDAV directory at the end.

Step 11 . Enter your WebDAV username and password.

Step 12. Click **OK** . The **Type a name option for this network location** has been filled out automatically, but if you want, you can change it.

Step 13 . Click **Next** and then click **Finish** .

On File Explorer, the WebDAV folder will be displayed as a mapped drive. Now you can add, edit or delete files and folders via File Explorer.

Could not connect to WebDAV folder

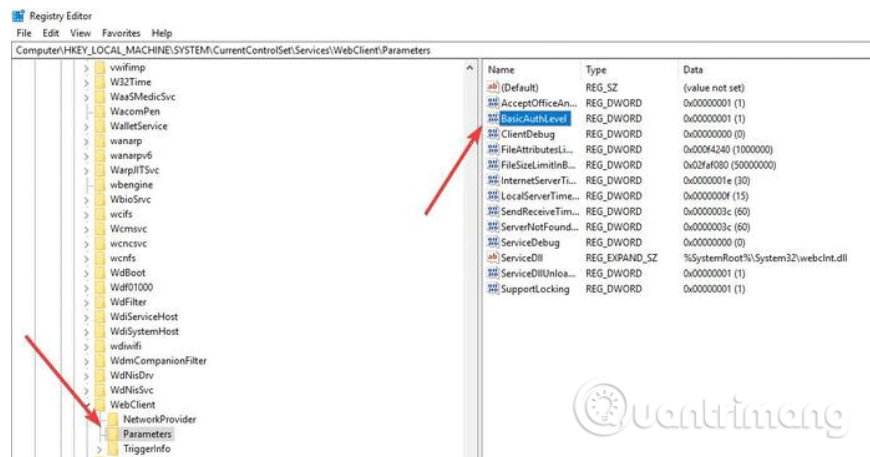
Note: If you have trouble connecting to the WebDAV folder, update the **Basic Authentication Level** in the Windows Registry.

Step 1 . Right-click on **Start** and select **Run** .

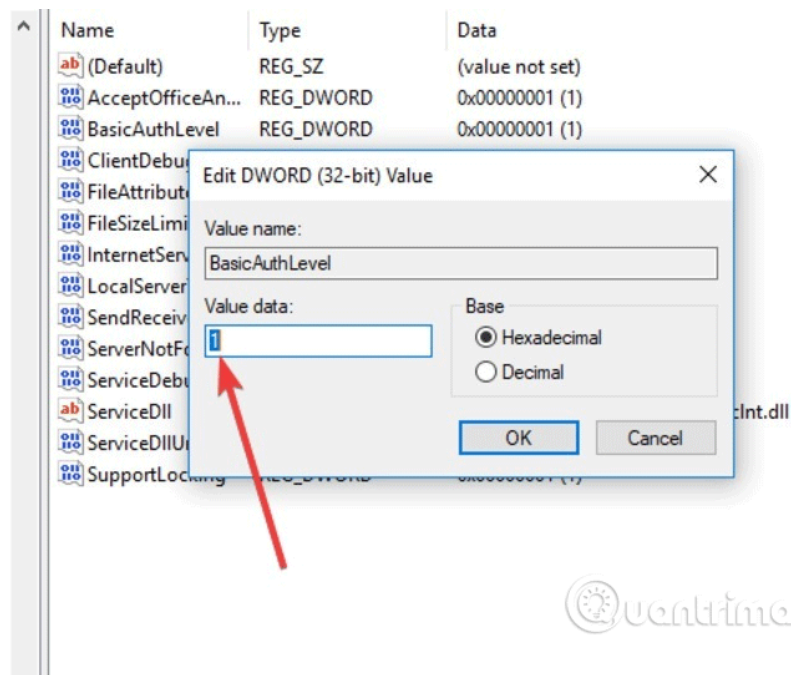
Step 2 . Type **regedit** and press **Enter** to open the Windows Registry Editor.

Step 3 . Go to directory path:

HKEY_LOCAL_MACHINE\SYSTEM\CurrentControlSet\Services\WebClient\Parameters



Step 4 . Find the value **Basic BasicAuthLevel** . By default, the value is set to 2, but if not this value, right-click and choose **Modify** , then change to 2.



Quantimeng

So you know how to map a WebDAV drive on Windows 10. Have you done it successfully!

You finished reading the article "**How to map WebDAV drives in Windows 10**" edited by the [TipsMake](#) team. We hope this article has provided you with many useful tech tips and tricks. You can search for similar articles on tips and guides. Thank you for reading and for following us regularly.