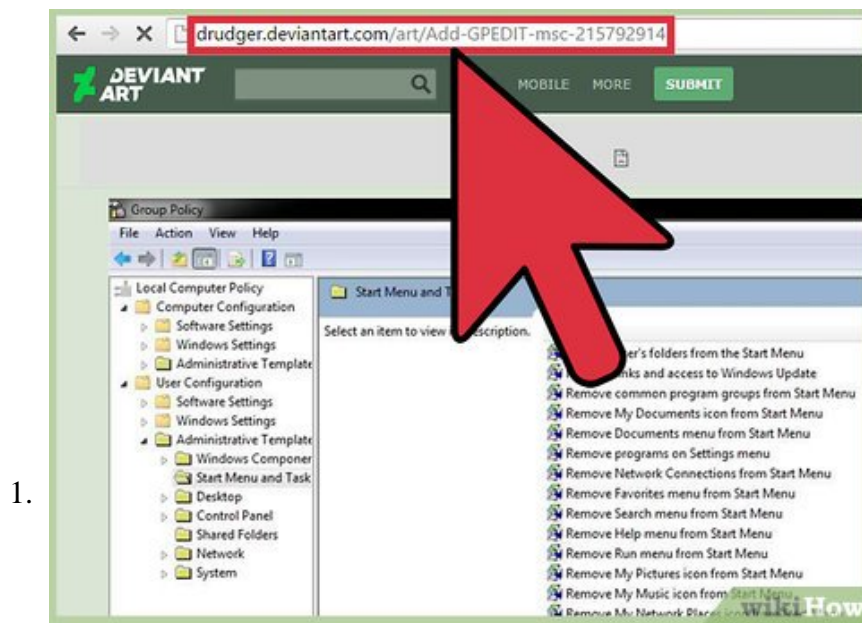


How to Make Windows 8 Move Deleted Favorites to the Recycle Bin Instead of Deleting Them

Windows 8 has a frustrating feature that causes all favorites that are deleted in Internet Explorer to skip the Recycle Bin. This guide will help you install Group Policy Edit (gpedit.msc), which is a feature present in older versions of...

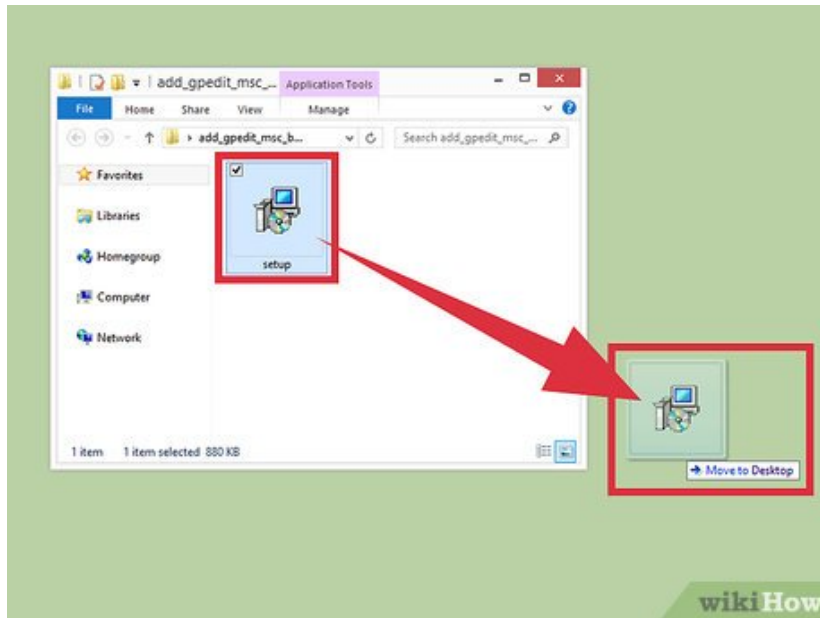
Part 1 of 4:

Getting the GPEdit Installer



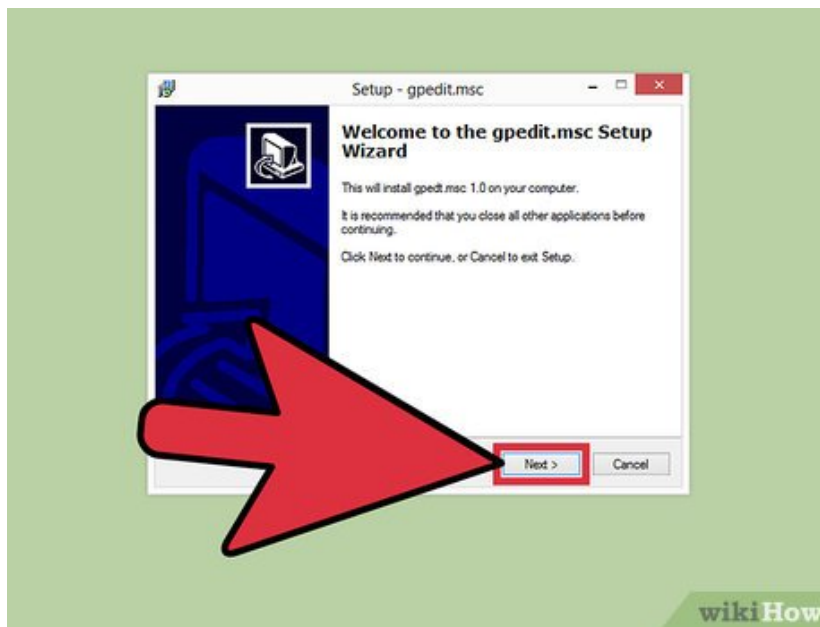
Get the GPEdit installer, which can be found on DeviantArt here. It comes in a .ZIP file, which you'll need an archive opener, such as WinRAR, to open.

2.



Move the file named "setup", which is inside the .ZIP, onto your desktop.

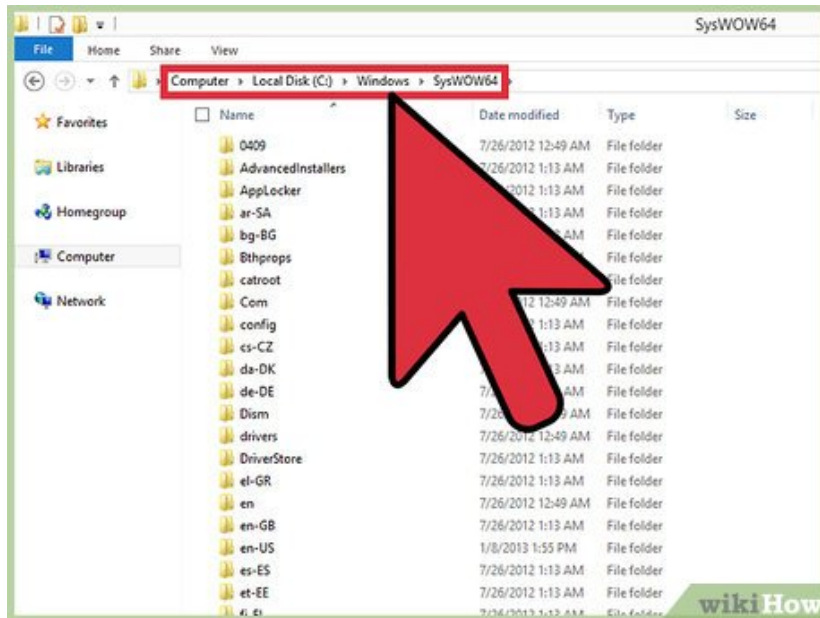
3.



Double click the newly unzipped file. Run the straightforward installer to put gpedit.msc and all related files onto your system.

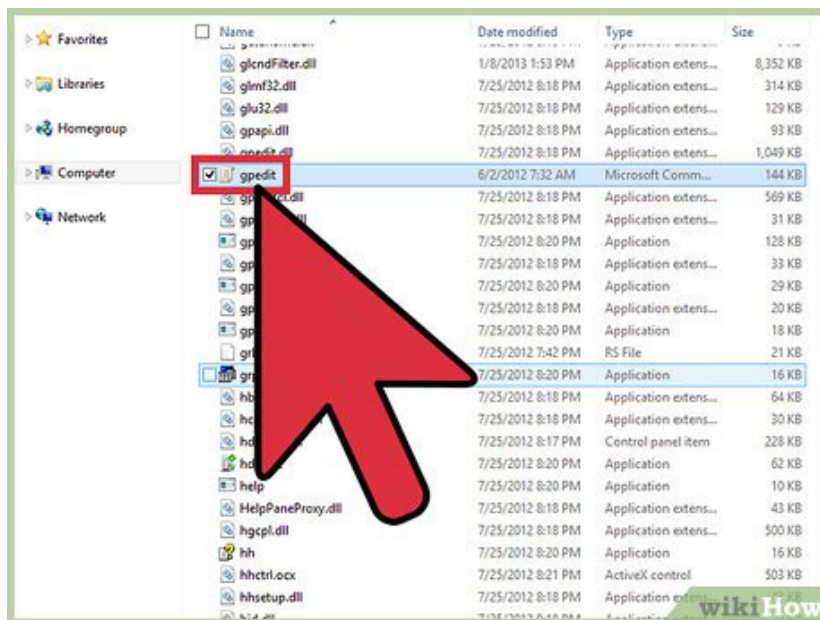
Part 2 of 4:

Making Modifications if You're on a x64 System



1.

Know whether you're on a x32 or x64 computer. The installer is meant for x32 systems, but you can make it work on your x64 computer. Go into your C:WindowsSysWOW64 folder and copy out 3 things that are there onto C:WindowsSystem32. To open either of these, press the Windows key and "r" together to get to the run prompt and enter the destinations to open them.

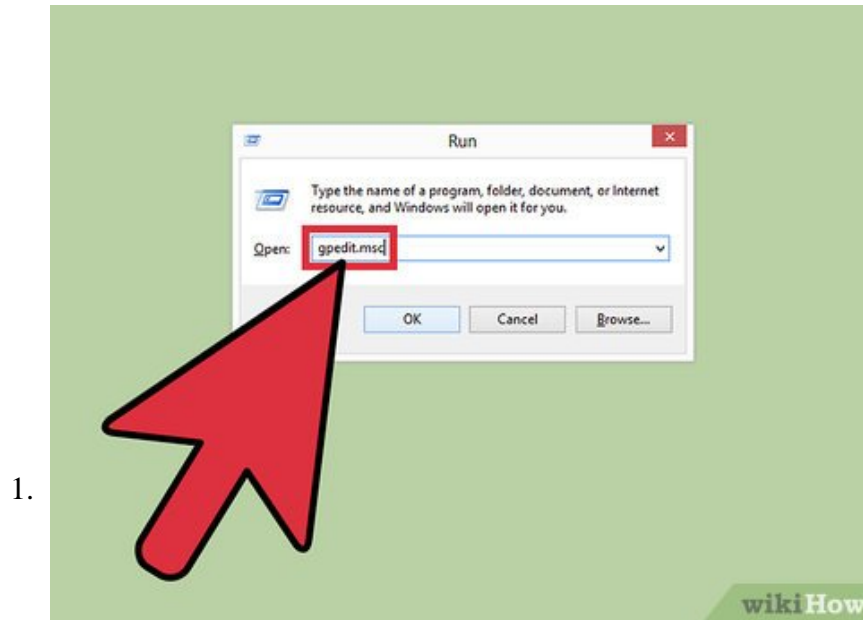


2.

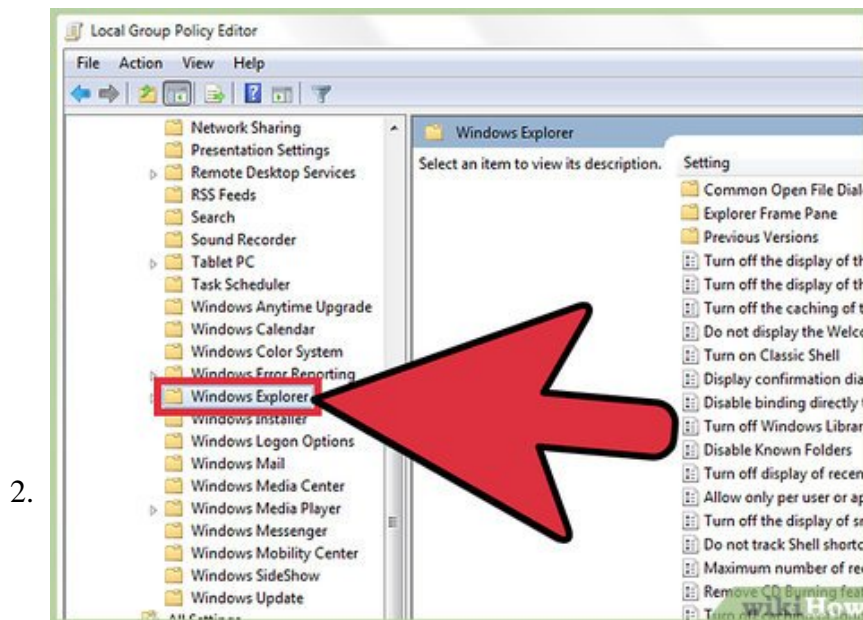
Copy the files in C:WindowsSysWOW64 named "gpedit" (not gpedit.dll) and the folders: "Group Policy" and "Group Policy Users" into C:WindowsSystem32.

Part 3 of 4:

Changing the Settings

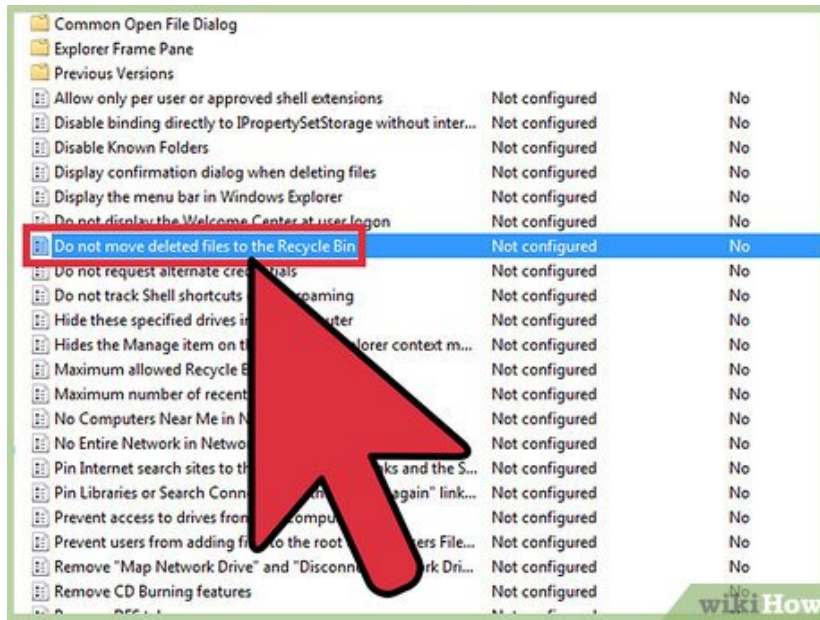


Open the run prompt again (with the Windows key+"r"). Type gpedit.msc and then press Enter.



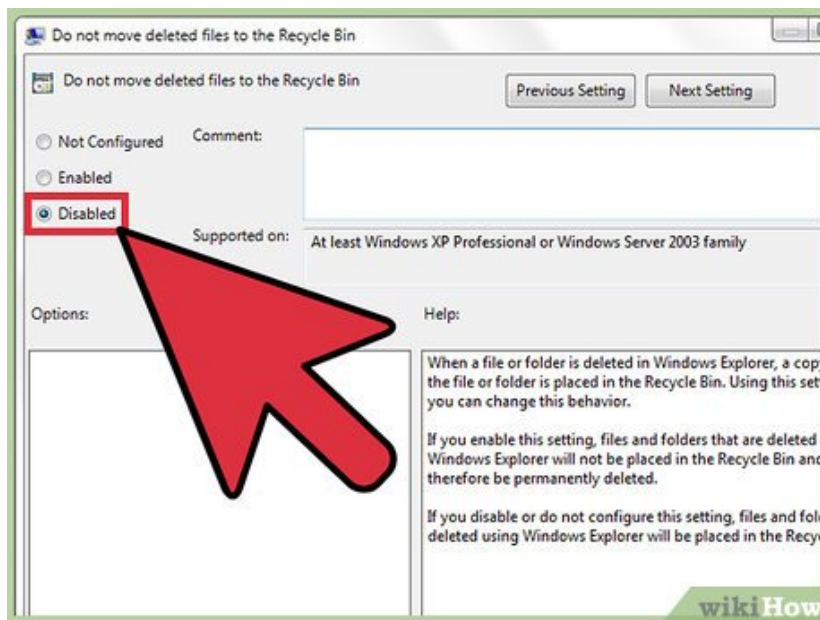
Navigate through folders to **User Configuration > Administrator Templates > Windows Components > Windows Explorer** (NOTE: "Windows Explorer", not "Internet Explorer").

3.



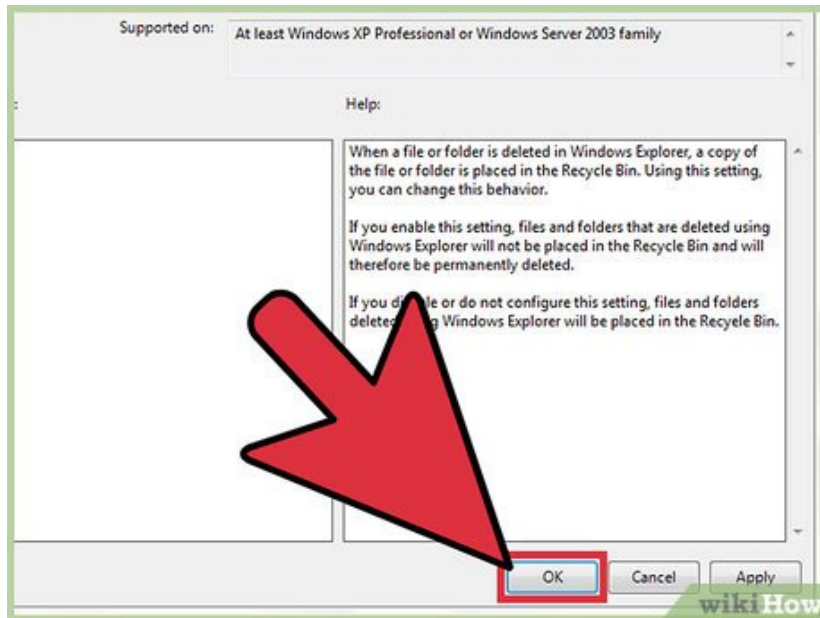
Double click "Do not move deleted files to the Recycle Bin".

4.



Choose "Disabled".

5.



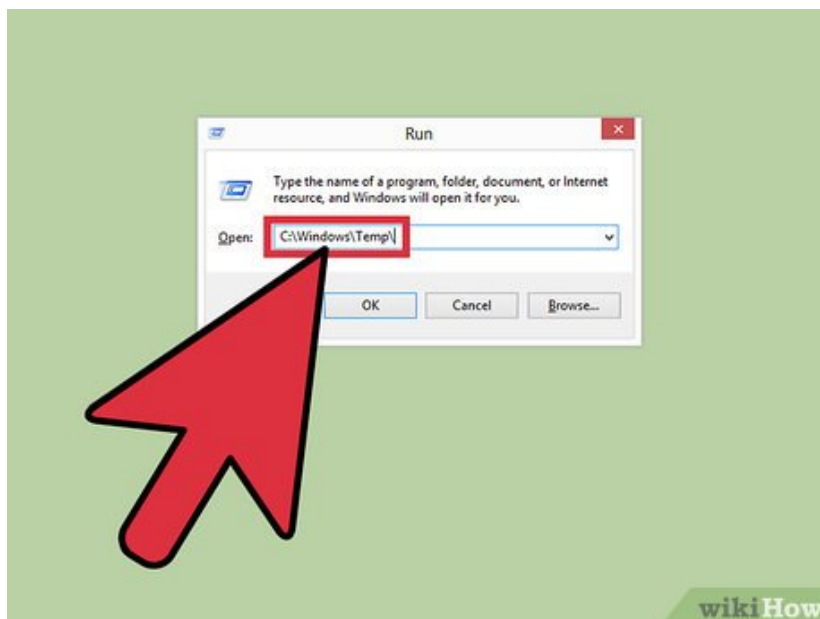
Click OK.

Part 4 of 4:

Troubleshooting for a Multi-Word Username

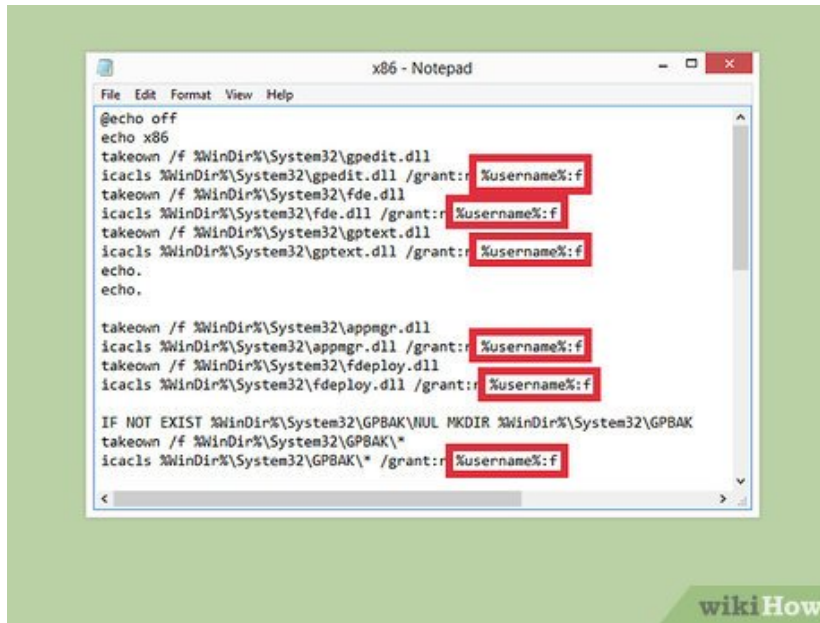
1. If you have a multi-word username on your Windows 8 computer, you won't be able to get the settings to run even with this program unless you modify it before you fully install it.

1.



Rerun the file named "setup" that you unzipped earlier. This time, stay on the last page of the installer (don't click "Finish") and go to C:WindowsTemp from the run prompt (Windows key + r).

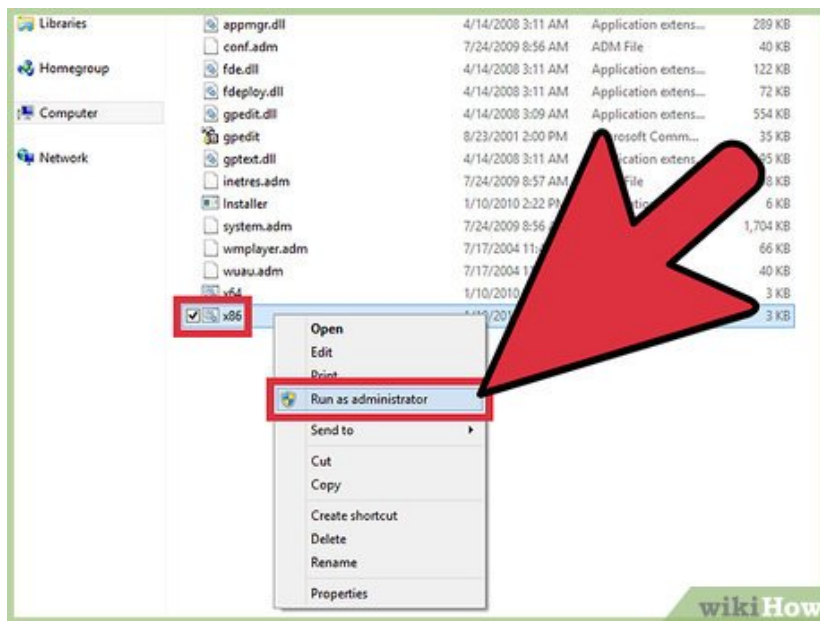
2.



Go into C:WindowsTempgpedit and edit a file there.

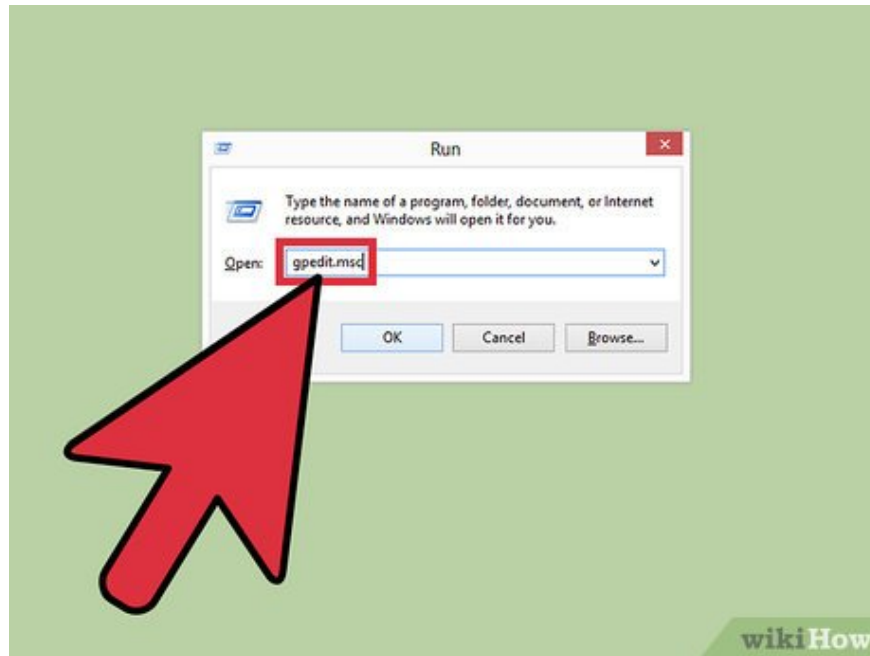
1. If you're on a 32-bit (or x86) computer, right-click on x86.bat and choose Open With > Notepad.
2. If you're on an x64 computer, right-click on x64.bat file and choose Open With > Notepad.
3. You have to manually change all 6 of these: %username%:f into these "%username%":f and then save

3.



If you just changed the x86.bat file, right click that and select "run as administrator". If you just changed the x64.bat file, right click that and select "run as administrator".

4. Go to gpedit.msc and change the settings as in the previous section of this guide.



You finished reading the article "**How to Make Windows 8 Move Deleted Favorites to the Recycle Bin Instead of Deleting Them**" edited by the [TipsMake](#) team. We hope this article has provided you with many useful tech tips and tricks. You can search for similar articles on tips and guides. Thank you for reading and for following us regularly.
