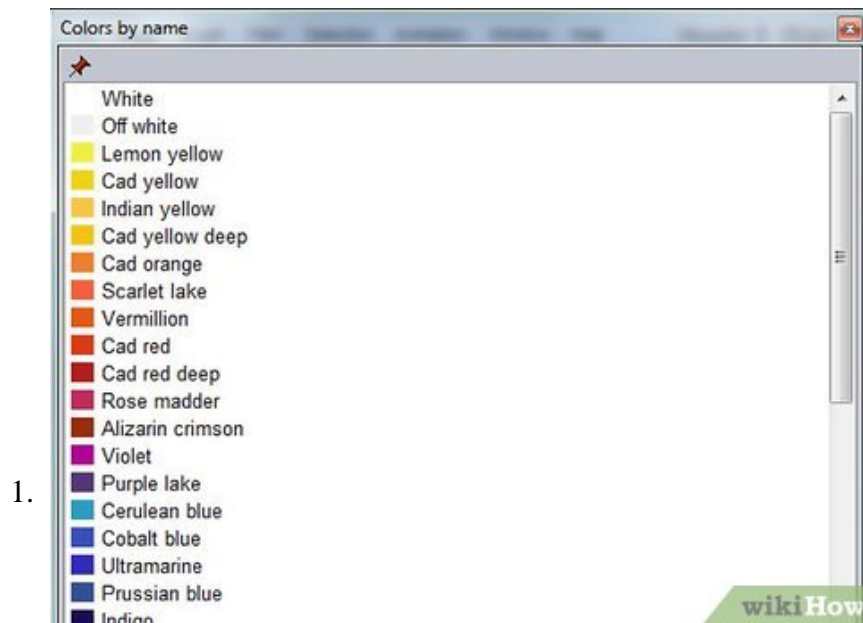


How to Make a Limited Palette in PD Howler

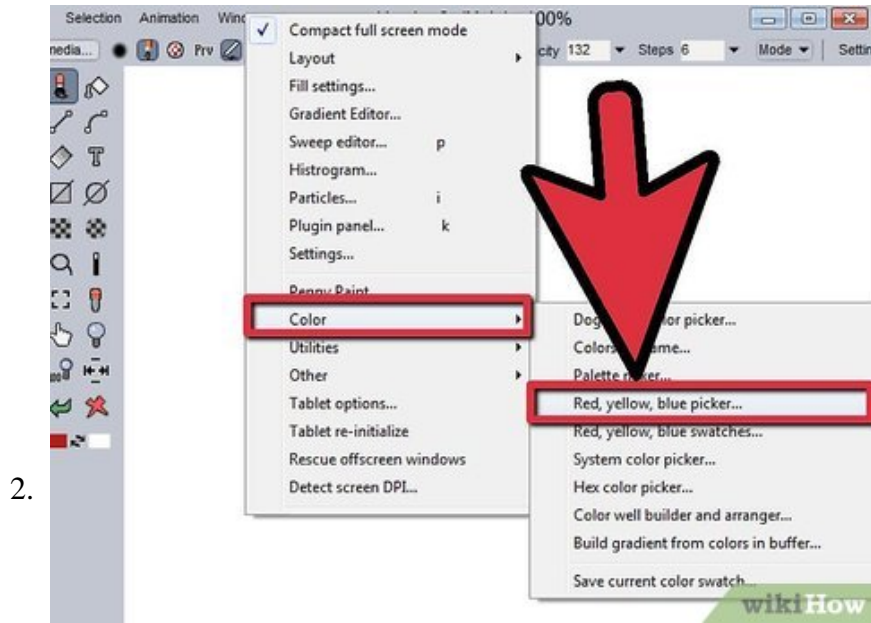
Want to do some 'realistic' digital painting? One thing that will give it a touch of realism (art wise) is to limit your palette. When an artist is painting, he is limited to the number of colors that he has available to him. Read this...

Part 1 of 2:

Making a 3 Color Palette



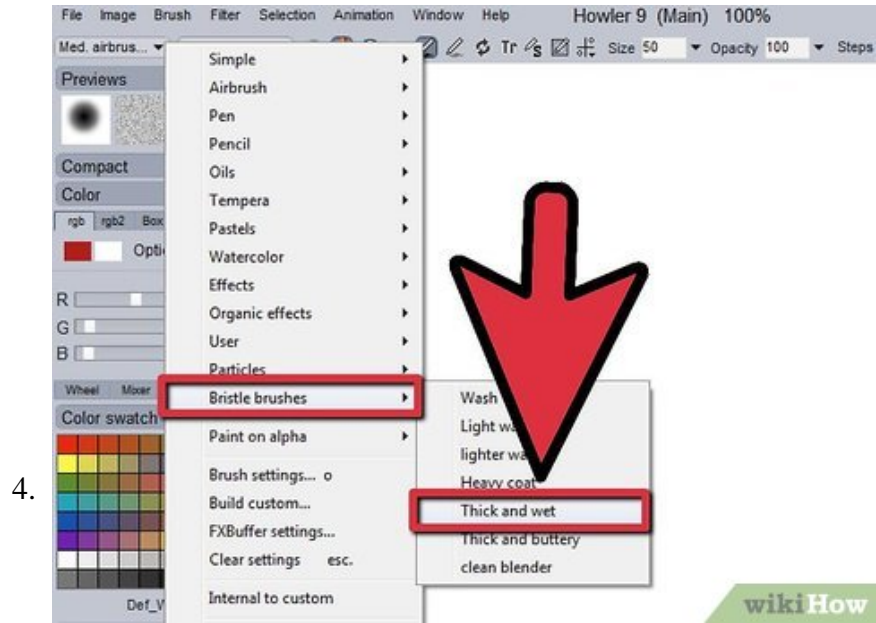
Make some decisions about how you want your color palette. Do you want it warm...maybe you want a cool color palette.



Choose the the three primary colors. They will be Yellow, Red, Blue. There are many shades to every color and the shade is what determines the warmth or coolness of the colors.



Slide the opacity bar to about halfway.



Select a Bristles brush. The one used here is 'Thick and wet'.



5.



Start painting in the color that you chose for the yellow. Color this in at the top third of a circle, as you see in the screenshot.

6.



wikiHow

Go with the color of red that you chose and use it to color in the bottom right of the palette.

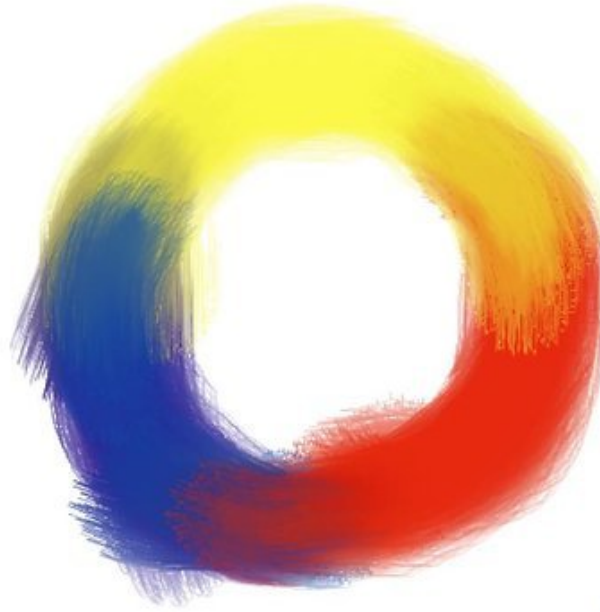
7.



wikiHow

With the color blue, fill in the last third of the circle.

8.



While you are adding the colors, you want to mix them together by coloring on top of the other color, back and forth.

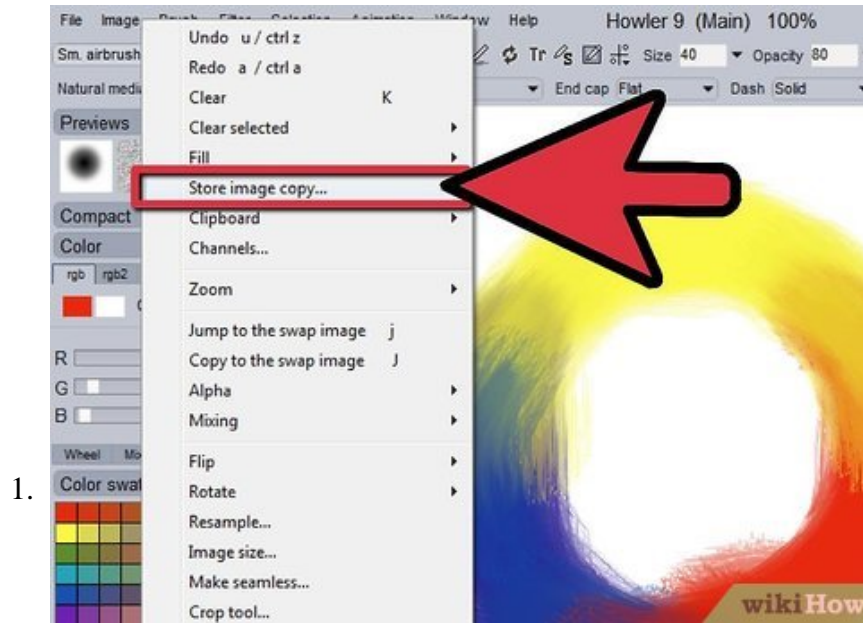
9.



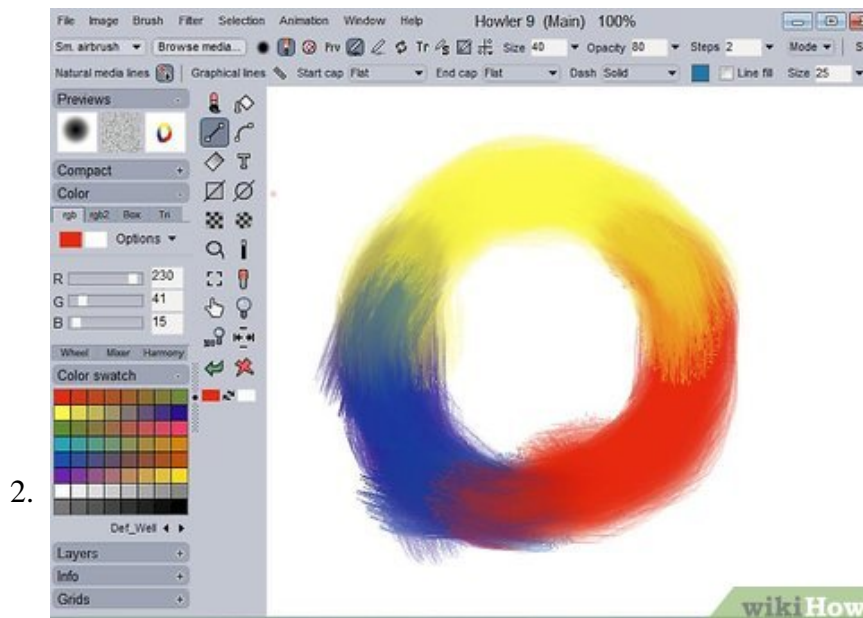
Be sure that you don't mix them together *too* thoroughly. You want a color palette, not a brown blob.

Part 2 of 2:

Using Your Palette



Go to **Image** + **Store image copy**. This will put it into a small box on your screen.



Click on the icon in the lower left of the small box. This is what makes it a palette for your artwork.

You finished reading the article "**How to Make a Limited Palette in PD Howler**" edited by the [TipsMake](#) team. We hope this article has provided you with many useful tech tips and tricks. You can search for similar articles on tips and guides. Thank you for reading and for following us regularly.