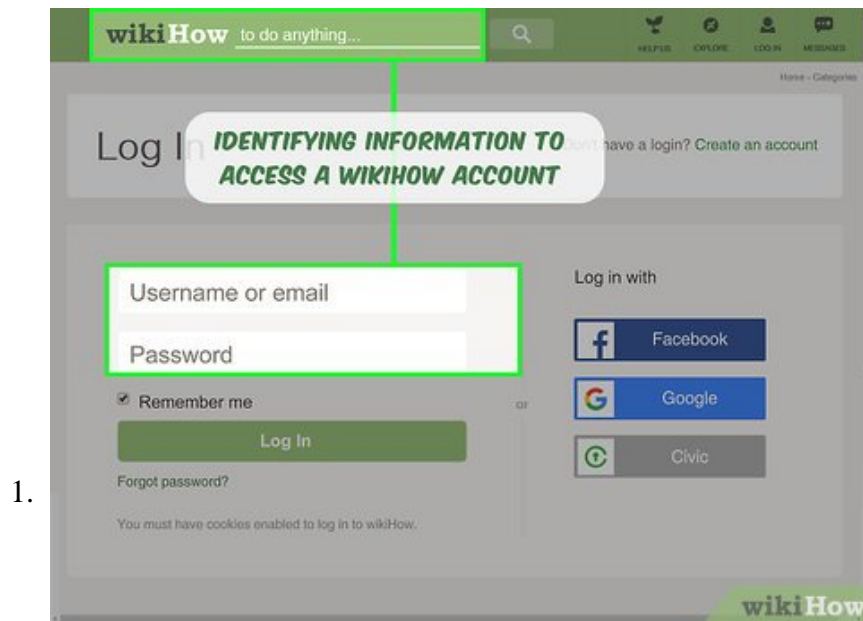


How to Log In

Logging in is the process of access an online service or electronic device using a unique identifier and a password. This is an important process to keep your information secure. This wikiHow teaches you how to log into any website on your...

Method 1 of 8:

Understanding Logging in Basics



Know what logging in is. Logging is the process of identifying a user that attempt to access a service, information, or electronic device, such as a computer or mobile phone. This process is used to ensure that only those who are authorized may access the service, information, or device.

IDENTIFICATION
(USERNAME, PHONE NUMBER, ID NO)

Username

Password

Log In

TO SAFEGUARD YOUR ACCOUNT

2.

wikiHow

Understand what comprises login information. You'll use the login credentials you created when making your account to log in. In most cases, this will involve a unique username and a password.

USERNAME IS THE PUBLIC IDENTITY OF THE USER WHO IS TRYING TO ACCESS INFORMATION, AN ONLINE SERVICE, OR AN ELECTRONIC DEVICE

jane.doe@email.com

Password

Remember me [Forgot Password](#)

Log In

3.

Understand what a Username is. A username is the public identity of the user who is trying to access information, an online service, or an electronic device. It usually comes in the form of an email address, though some sites may use a phone number, or some other form of identification (e.g., an ID number). Some websites and services allow users to choose their own unique username. Each username for a particular service is unique. No two users are allowed to have the same username. The username is often viewed publicly by other users, as well as the service provider. Therefore, usernames are not generally expected to be kept private.

PASSWORDS ARE PRIVATE AND ARE CHOSEN BY THE USER WHEN THEY SIGN UP FOR A SERVICE ACCOUNT

jane.doe@email.com

friends54887

Remember me [Forgot Password](#)

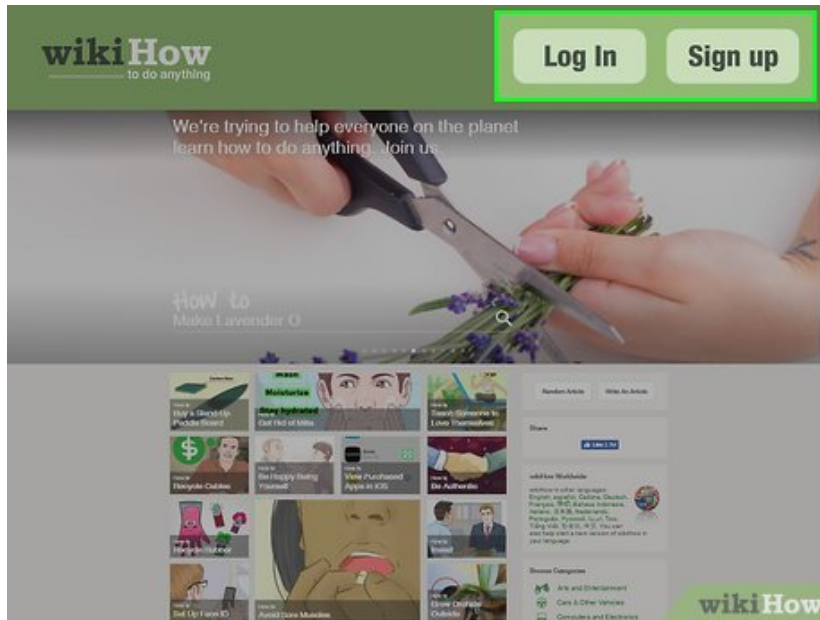
Log In

4.

Understand what a password is. Passwords are used to ensure that the person logging in with a specific username is indeed the rightful user. Passwords are chosen by the user when they sign up for a service account, or when setting up a computer, tablet, or smartphone. Users are expected to keep their passwords private and not tell anyone else what their password is.

1. Some passwords are stronger than others. A strong password should not be easy to guess. It should be at least 8 characters long and contain a combination of uppercase, and lowercase letters, as well as numbers and special characters. Avoid using words in your passwords. If you must use a word, consider using alternate spellings, or replacing certain letters with numbers or characters that look like letters (i.e. "0" instead of "O", "@" instead of "a", "!" instead of "i", or "&" instead of "G").
2. Avoid using the same password for all of your service accounts. This prevents hackers from gaining access to all of your accounts if they are able to crack one of your passwords.
3. You should change your passwords frequently. Especially if you suspect someone has gained access to any of your accounts.
4. Some newer smartphones, tablets, and computers now come with fingerprint and/or cameras that can scan your face or retinas. These allow you to log in using your fingerprint or face recognition to log in.

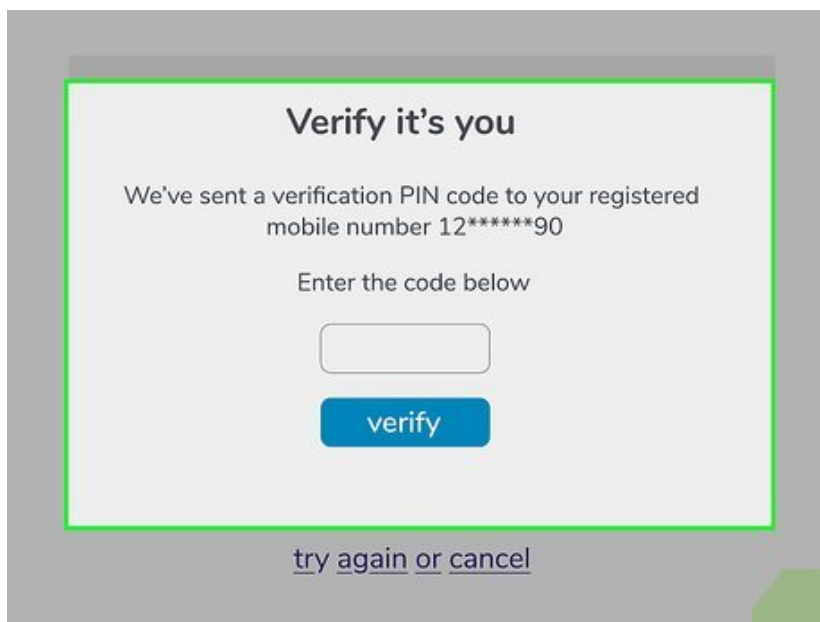
5.



Familiarize yourself with login basics. Most websites' or services' login pages can be accessed by clicking a **Log In** or **Sign In** link somewhere on the home page (usually in the upper-right corner). Then you'll enter your email address (or other types of username) in the "Email" text field and your password in the "Password" text field. You then click or tap a button to log in with your information.

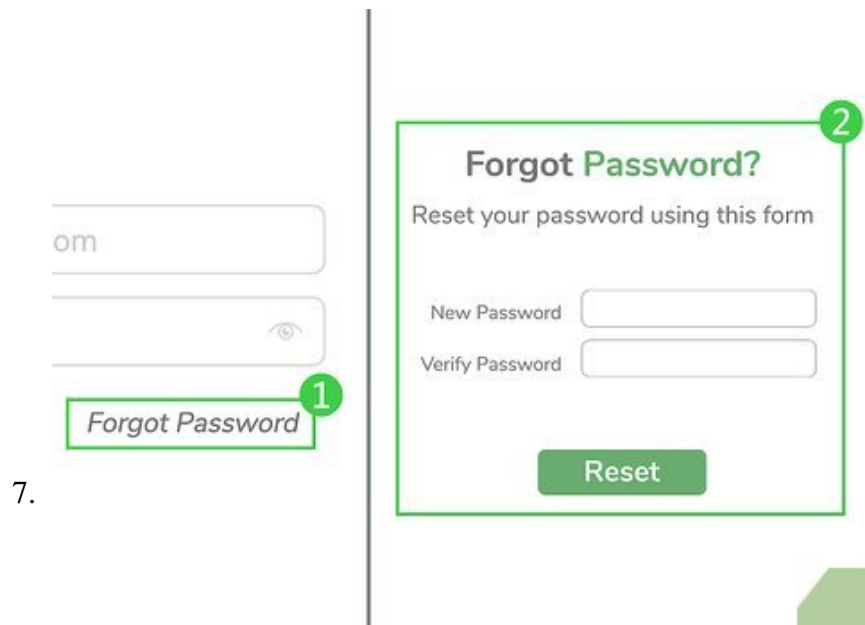
1. It's important to remember that not all sites handle logging in the same way. If you can't find an option which says "Log In" precisely, look for alternative options.
2. If you do not have an account, you will need to tap **Sign Up**, **Register** or something similar to get an account. You will then need to fill out a form with your personal information and answer some questions to sign up for an account.

6.



Understand what two-factor authentication is. In addition to usernames and passwords, many services allow you to use two-factor authentication when logging in. This adds an additional layer of security by requiring you to confirm that you are logging in using your smartphone. There are a few different ways

two-factor authentication works. After logging in with your username and password, you may receive an alert on your smartphone, or a text message containing a verification code. If you receive an alert, you can tap **Yes** on your smartphone to verify that it is you trying to log in. If you receive a text message, you will need to enter the verification code in the text message to confirm that it is you trying to log in.



Recover a lost password. Passwords can be long and complex. From time to time, you may find you are not able to log in to one of your accounts because you cannot remember your password. Don't panic. Most services have a backup identification method you can use to identify yourself and change your password. Simply click **Forgot my password** to begin the recovery process. The two main backup identification methods are email identification and a security question.

1. **Email Identification:** Email identification is the most common form of backup identification. A verification email will be sent to the email address you used to set up your account with. You will need to check your email account to retrieve the email. In most cases, the email will have a verification button or link you click to verify your account. Then you will be able to pick a new password you can use to log in with.
2. **Security Question:** When signing up for a new account or service, sometimes they will ask you to pick a security question that only you know the answer to (i.e. Your first dog's name, The name of the street you grew up on, etc). You will need to input the correct answer when signing up for the account. If you need to recover your password, you will be asked this security question. If you answer the question correctly, you will then be directed to pick a new password you can use to log in with.

8.

8.

8.

Remember me [Forgot Password](#)

wikiHow

Consider saving your login information. Many websites, apps, and services have the option to remember your login information so that you don't have to enter it every time you want to log in. You can save your login information by clicking the checkbox next to "Remember me", "Keep me logged in" or something similar. Your login information will then be stored on your computer, tablet, or smartphone. This information is not stored in any public capacity. There are benefits and risks to saving your login information:

1. **Benefit:** Convenience. You don't have to enter your login information every time you want to log in.
2. **Risk:** Anybody who is able to gain access to your computer, smartphone or other devices will be able to gain access to your accounts with saved login information.

Method 2 of 8:

Logging into Mobile Apps

1.



Determine whether the app requires a login. Many apps, such as your phone's weather app and any other apps which were included with the phone upon purchase, will not require you to log into your account.

1. Similarly, many games and utility apps don't require a login.
2. Social media apps, email apps, and so on do require a login, and will often not function without first having you logged in.
3. Some apps, such as browsers, will not require a login to function. However, these apps may require you to sign in to access certain features.

2.



Open the app. Tap the app's icon on your phone to do so. If you aren't already logged in, this will open the app's login page.

1. Unlike many websites, most apps that require logins are unusable if you don't log into them.

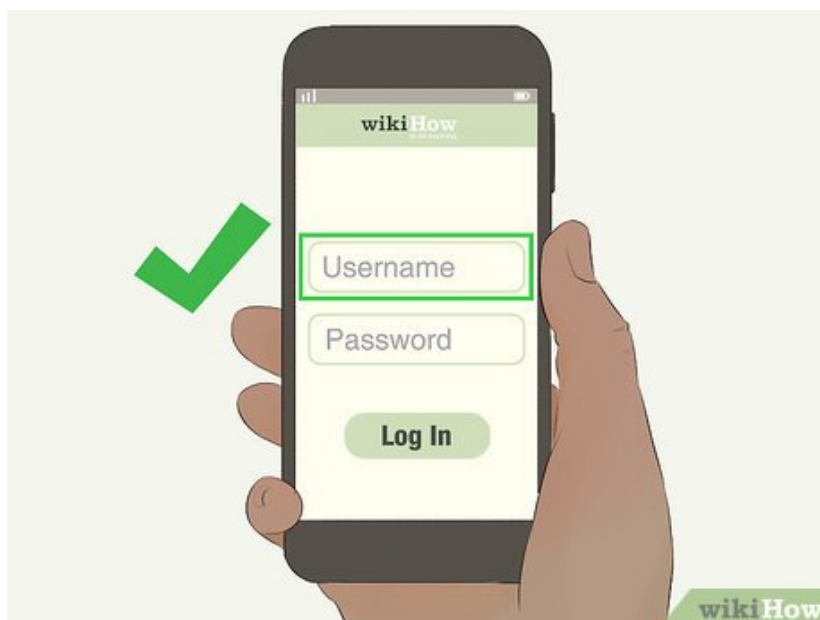
3.



Find the or button. This is usually a button in the middle or the top-right corner of the screen, but it may be a text link at the bottom of the screen.

1. Some apps will require you to scroll right through introduction screens before you can view the login page.
2. If you do not have an account, you will need to tap **Sign Up**, **Register** or something similar to get an account. You will then need to fill out a form with your personal information and answer some questions to sign up for an account.
3. Some apps, such as Google apps, will ask you to select an account if you're logged into another app from the same company (for example, if you're logged into the Google Chrome app and you download Gmail, you may be asked to select a Gmail account rather than having to enter the account's email address).

4.



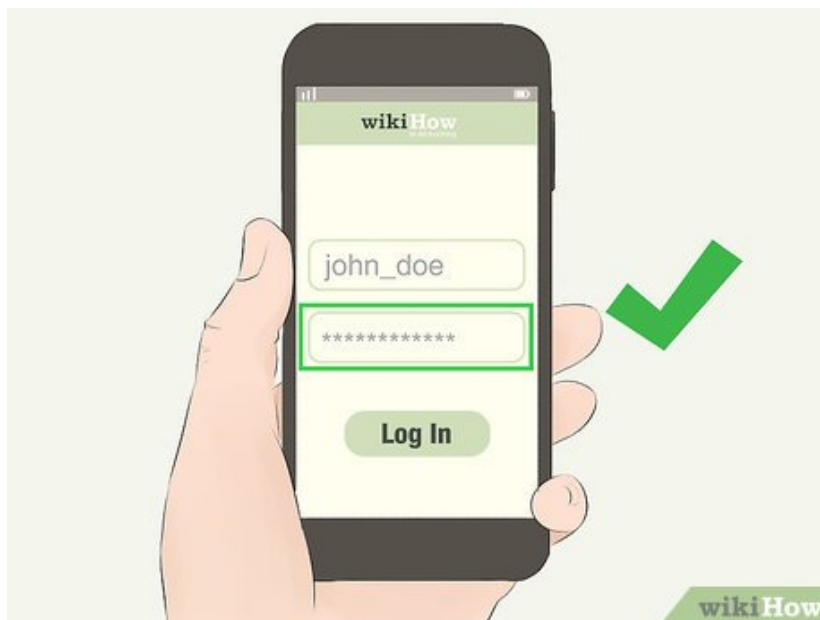
Tap the identification text box. This will usually be the text box labeled "Username", "Email address", or similar.

5.



Enter your identification. Using the on-screen keyboard, type in your email address, username, phone number, or other identification method you used when creating your account.

6.



Enter your password. Tap the "Password" text box (usually found below the identification text box), then type in your account password.

1. If there is no password field, it's probably on the next page. Look for a **Next** or **Submit** button and tap it to proceed to the password section.
2. If you have an iPhone or an Android with a fingerprint scanner, some apps will require you to scan your fingerprint rather than inputting a password. The fingerprint scanner may be located below the camera on the back of your phone, it may be the home button below the screen, or you may have an in-screen fingerprint scanner. ^[1]



Tap **Log In** or **Sign In**. This option is almost always below the "Password" text box, but you may need to look to the right of the text box. As long as your login information is correct, this will log you into your mobile app.

1. This button will vary from app to app, so just look for some form of a confirmation button below or near the password text box.

Method 3 of 8:

Logging into a Computer, Tablet, or Smartphone



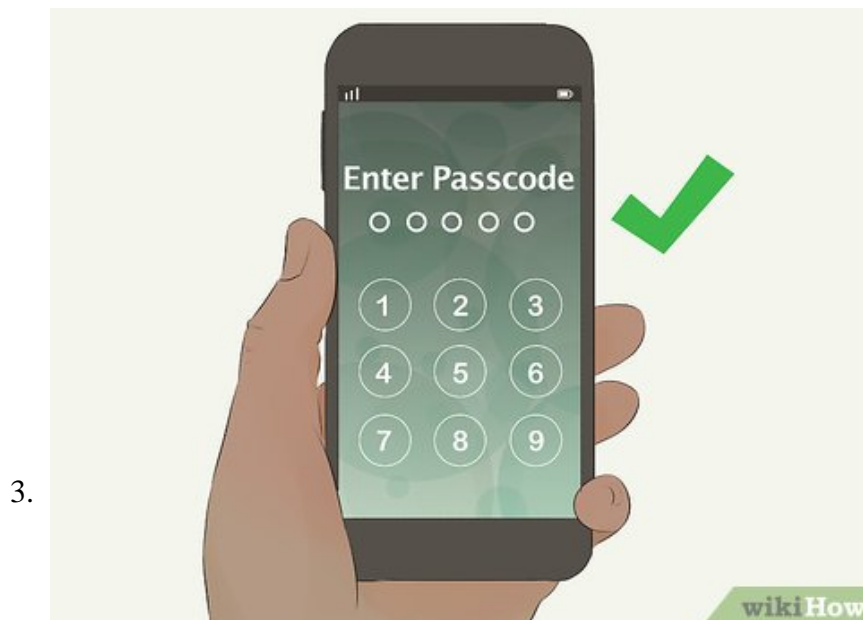
Log into a Windows computer. Upon starting up your computer, click your preferred account on the left side of the screen, then type in the password for that account and press **Enter**.

1. If you're using a Windows 10 computer, you may instead enter a four-digit PIN, or use a fingerprint scanner to log in.
2. On Windows 10, you can click the **Sign-in options** link near the bottom of the lock screen and then click the "Password" icon (which resembles a horizontal bar) to enter a password if you don't know the PIN, or click the "PIN" icon (which resembles a keypad) if you don't know your password.



Log into a Mac computer. Once your Mac arrives at the login screen after starting it, click your account name, then type your account password into the "Password" text box below the first box and press [Return](#).

1. Your Mac's main username will usually appear in the top text box when starting up your Mac.



Log into a smartphone or tablet. In most cases, smartphones and tablets only require you to enter a PIN, password, or pattern, or fingerprint in order to unlock and use the item. You can usually pick which method you want to sign in with when you set up your phone, or in the Settings menu. The following

techniques can be used to log in to your phone.

1. **Password or PIN:** To log in with your password or PIN, use the on-screen keyboard or number pad to enter your password or PIN.
2. **Pattern:** Patterns are made by connecting dots in a 3x3 grid. Use your finger to draw the pattern you set by connecting the correct dots in the 3x3 grid.
3. **Fingerprint:** To sign in using your fingerprint, simply place your fingerprint over the fingerprint scanner on your phone.
4. **Facial Recognition:** Some phones allow you to sign in using facial recognition software. To use this feature, hold your phone in front of your face so the camera can see your face. In some cases, it will scan your eyes. Hold your phone so that your eyes appear in the marked areas of the screen.

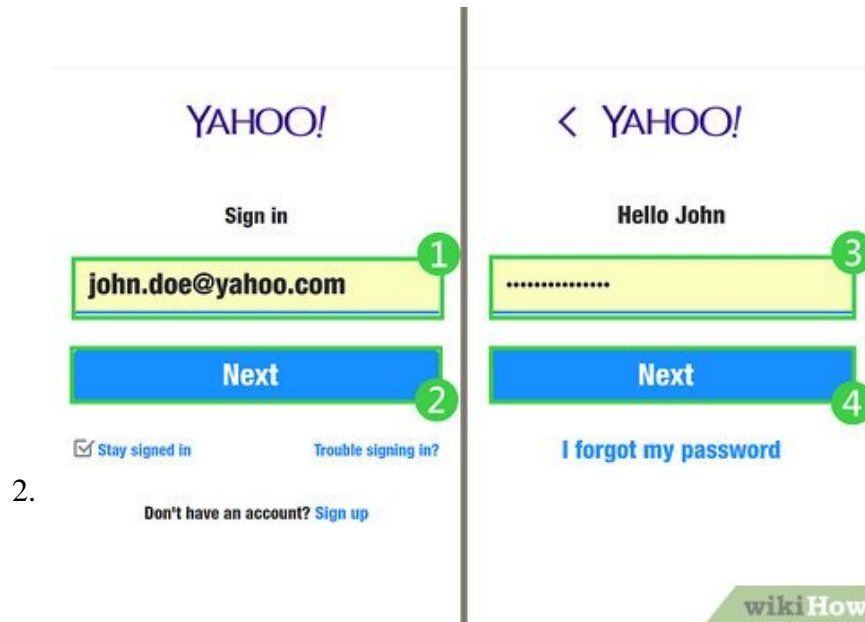
Method 4 of 8:

Logging into Email Services



Log into Gmail. Use the following steps to log in to Gmail:

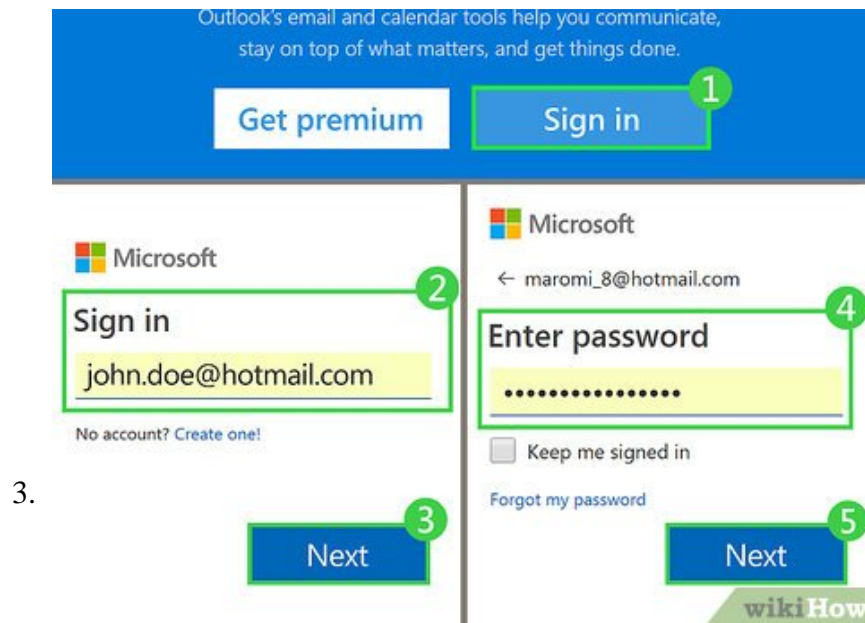
1. Go to <https://www.gmail.com/> in your computer's web browser, or open the Gmail app on your phone or tablet.
2. Type in your email address (or, if it's attached to your email account, you can instead type in your phone number).
3. Click the blue **NEXT** button.
4. Type in your account password.
5. Click **NEXT** to log in.



2.

Log into Yahoo. Use the following steps to log in to Yahoo:

1. Go to <https://www.yahoo.com/mail> in your computer's web browser, or open the Yahoo Mail app on your phone or tablet.
2. Type in your email address or your username (e.g., the username part of the email address).
3. Click **Next**
4. Type in your account password.
5. Click **Sign in**

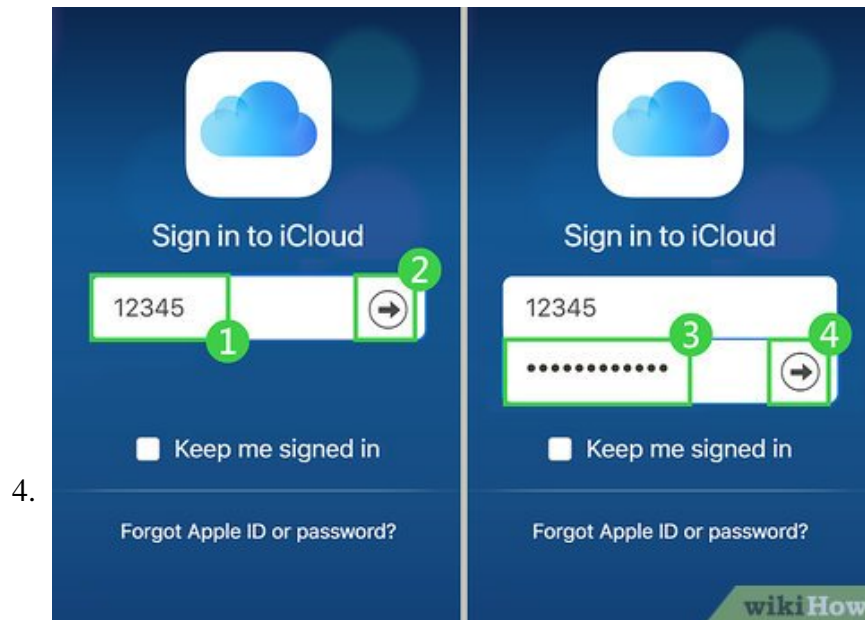


3.

Log into Microsoft Outlook. Use the following steps to log in to Outlook:

1. Go to <https://www.outlook.com/> in your computer's web browser, or open the Outlook app on your computer, smartphone, or tablet.
2. Click **Sign in** either in the middle of the page or in the top-right corner of the page.

3. Type in your email address (or your phone number or Skype username if either is linked to your email address).
4. Click **Next**
5. Type in your account password.
6. Click **Sign in**

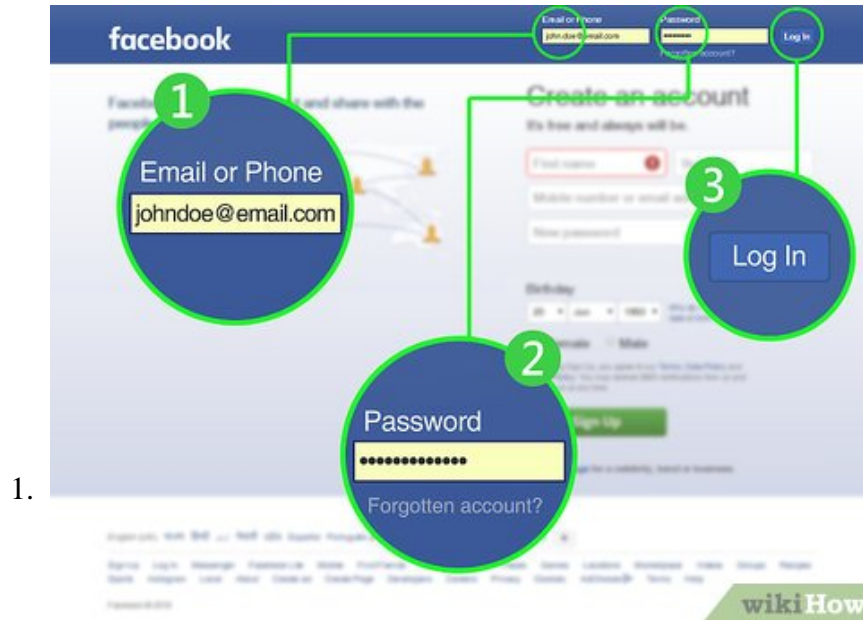


Log into Apple Mail. Use the following steps to log in to Apple Mail:

1. Go to <https://www.icloud.com/#mail> in your computer's web browser.
2. Type in your Apple ID email address.
3. Click the right-facing arrow to the right of the email address.
4. Type your Apple ID password into the text box which appears below the email address.
5. Click the right-facing arrow to the right of the password.

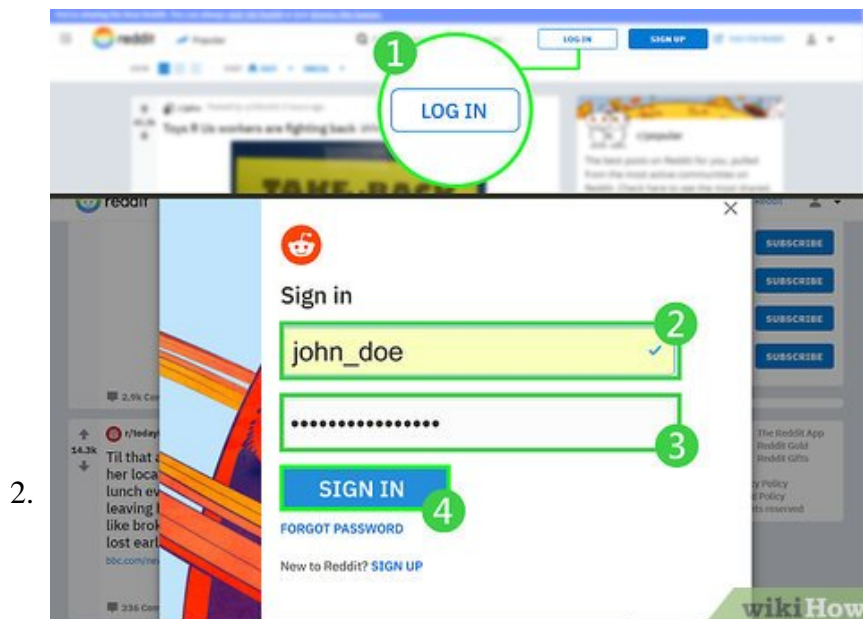
Method 5 of 8:

Logging into Social Media



Log into Facebook. Use the following steps to log in to Facebook:

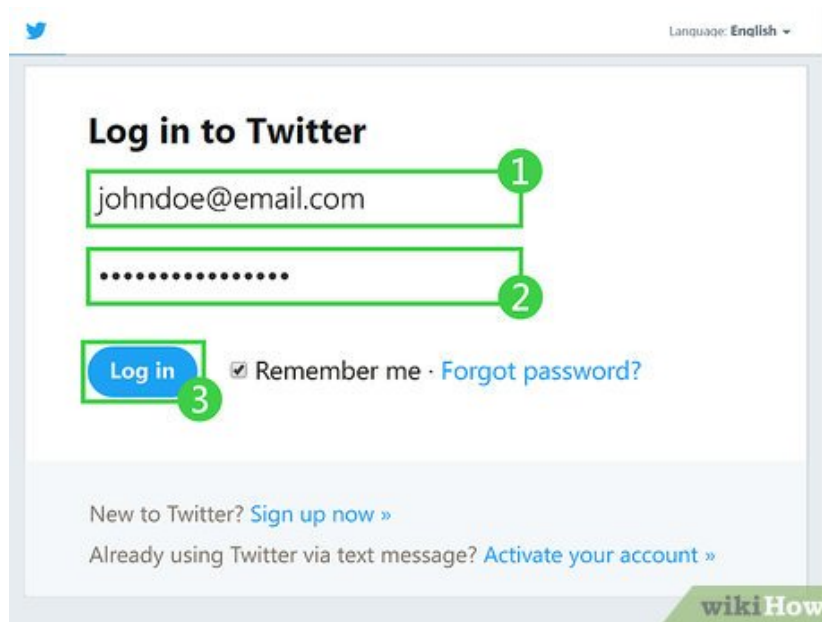
1. Go to <https://www.facebook.com/> in your computer's web browser, or open the Facebook app on your phone.
2. Type your email address (or, if it's linked to your Facebook account, your phone number) into the "Email or Phone" text box in the upper-right side of the page.
3. Type your Facebook password into the "Password" text field to the right of the email or phone number you entered.
4. Click **Log In**



Log into Reddit. Use the following steps to log in to Reddit:

1. Go to <https://www.reddit.com/> in a web browser, or open the Reddit app on your smartphone or tablet.
2. Click **LOG IN** in the upper-right side of the page.

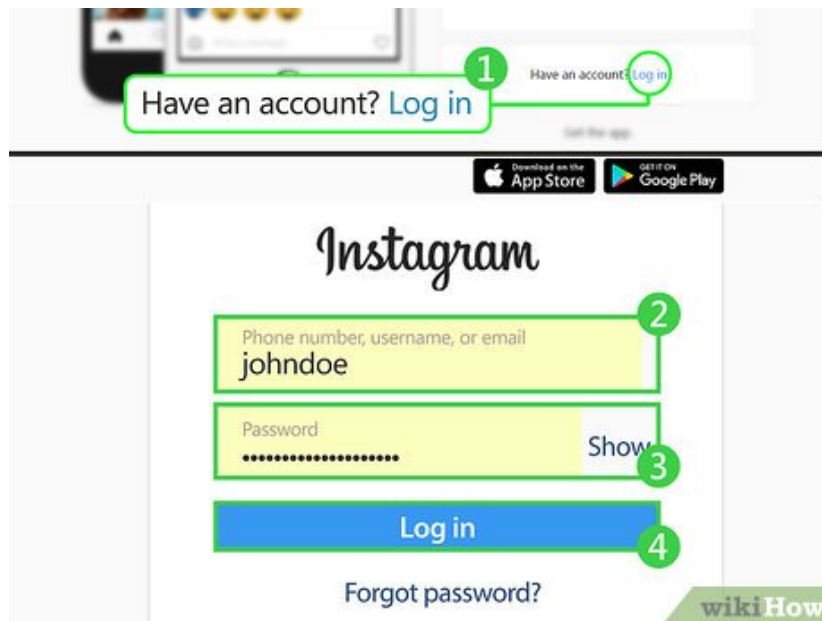
3. Type your Reddit username into the "USERNAME" text box.
4. Type your Reddit password into the "PASSWORD" text box below the username.
5. Click **SIGN IN**



3.

Log into Twitter. Use the following steps to log in to Twitter:

1. Go to <https://twitter.com/> in your computer's web browser, or open the Twitter app on your smartphone or tablet.
2. Type your email address (or username, or phone number) into the "Phone, email, or username" text box in the upper-right side of the page.
3. Type your password into the "Password" text box to the right of the first one.
4. Click **Log in** to the right of the "Password" text box.

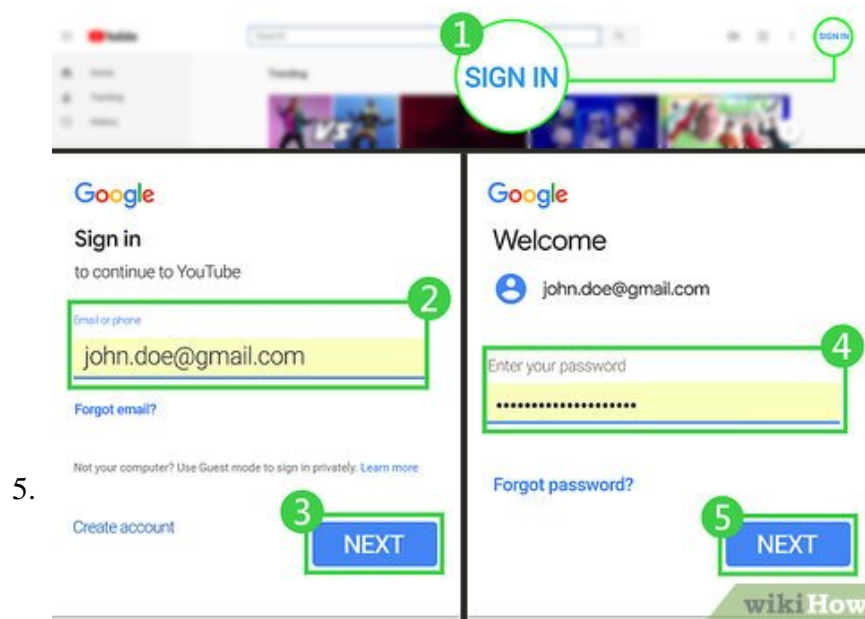


4.

Log into Instagram. Use the following steps to log in to Instagram:

1. Go to <https://www.instagram.com/> in your computer's web browser, then do the following:

2. Click the **Log in** link to the right of the "Have an account?" text at the bottom of the page.
3. Type your email address, phone number, or username into the top text box.
4. Type your password into the "Password" text box.
5. Click **Log in**



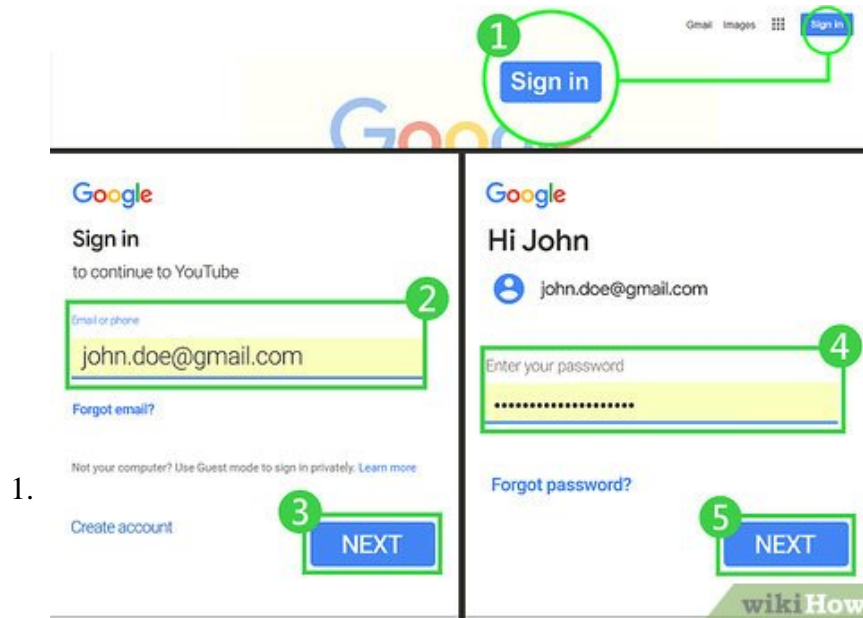
5.

Login to YouTube. Use the following steps to log in to YouTube:

1. Go to <https://www.youtube.com/> in your computer's web browser, then do the following:
2. Click **SIGN IN** in the top-right corner of the page.
3. Type in your Google account's email address (or phone number if it's connected to your account).
4. Click **NEXT**
5. Type in your account's password.
6. Click **NEXT**

Method 6 of 8:

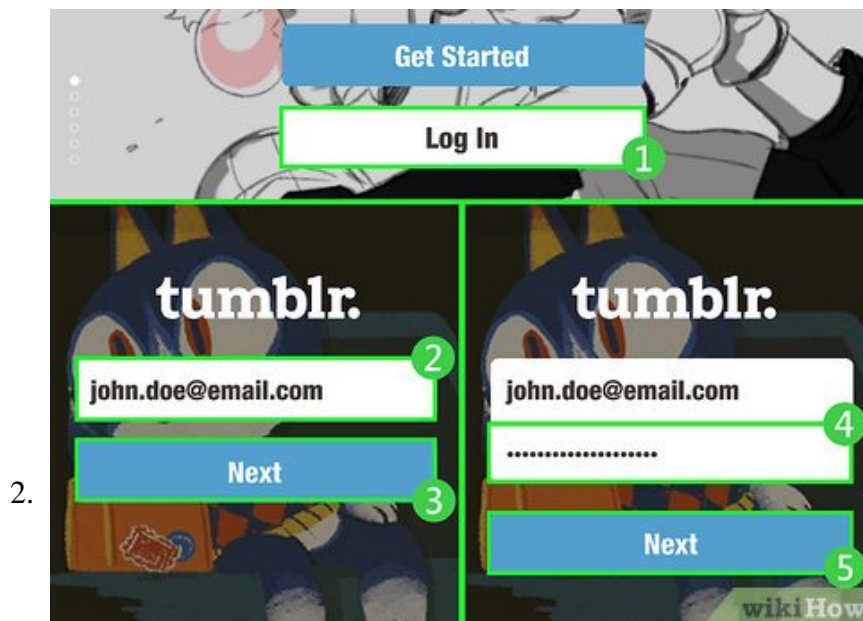
Logging into Other Services



1.

Log into Google. Use the following steps to log in to Google:

1. Go to <https://www.google.com/> in your computer's web browser, then do the following:
2. Click **Sign in** in the top-right corner of the page.
3. Type in your Google account's email address (or phone number if it's connected to your account).
4. Click **NEXT**
5. Type in your account's password.
6. Click **NEXT**

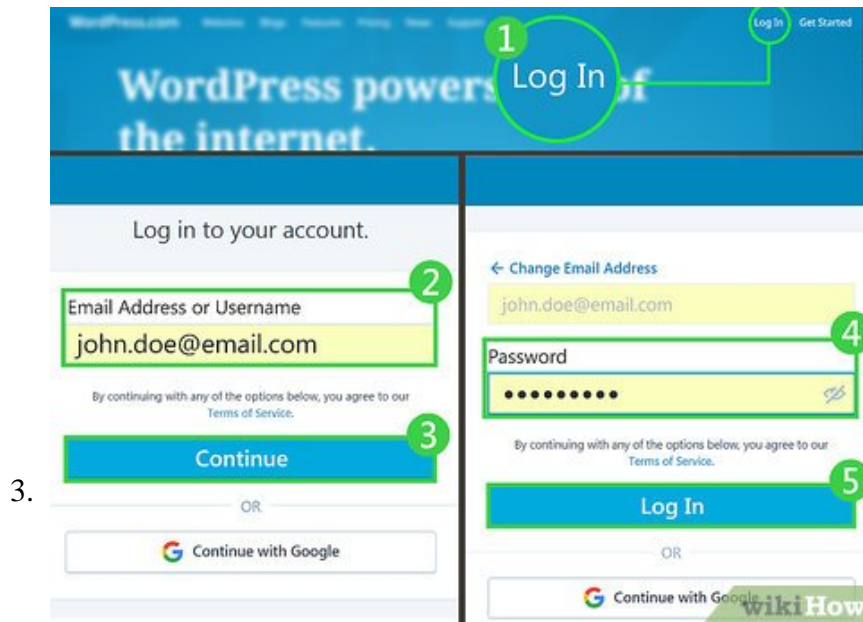


2.

Log into Tumblr. Use the following steps to log in to Tumblr:

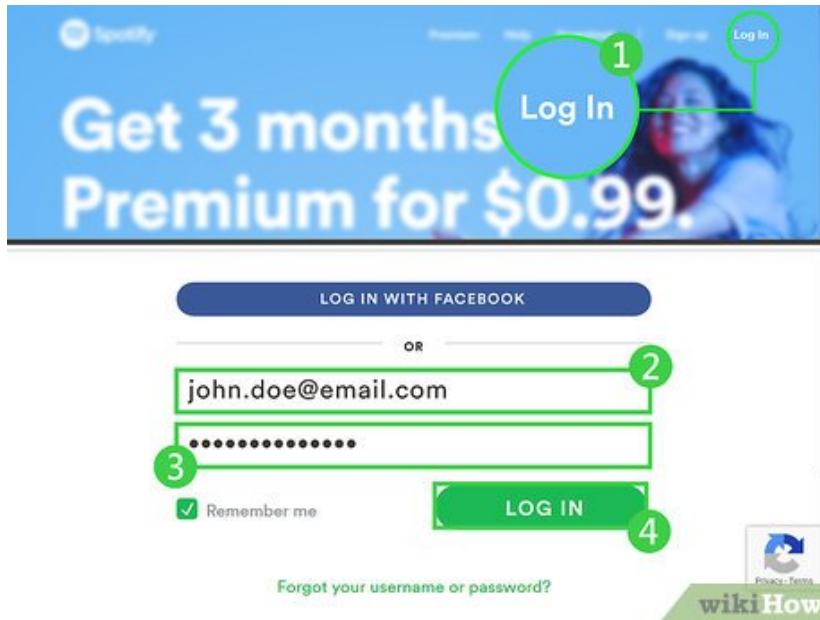
1. Go to <https://www.tumblr.com/> in your computer's web browser or open the Tumblr app on your smartphone or tablet.
2. Click **Log In** in the middle of the page.
3. Type in your email address.

4. Click **Next**
5. Click **Use password to log in**
 1. You can also open the email address used to log into Tumblr and click the link sent by Tumblr to log in automatically.
6. Type in your password.
7. Click **Log in**



Log into WordPress. Use the following steps to log in to WordPress:

1. Go to **https://wordpress.com/** in your computer's web browser, or open the WordPress app on your smartphone or tablet.
2. Click **Log In**
3. Type in your email address or username.
4. Click **Continue**
5. Type in your password.
6. Click **Log In**



4.

Log into Spotify. Use the following steps to log into Spotify:

1. Go to <https://www.spotify.com/us/premium/> in your computer's web browser, or open the Spotify app on your smartphone or tablet.
2. Click **Log In** in the top-right corner of the page.
3. Type your email address or Spotify username into the top text field.
4. Type your password into the "Password" text box.
5. Click **LOG IN**

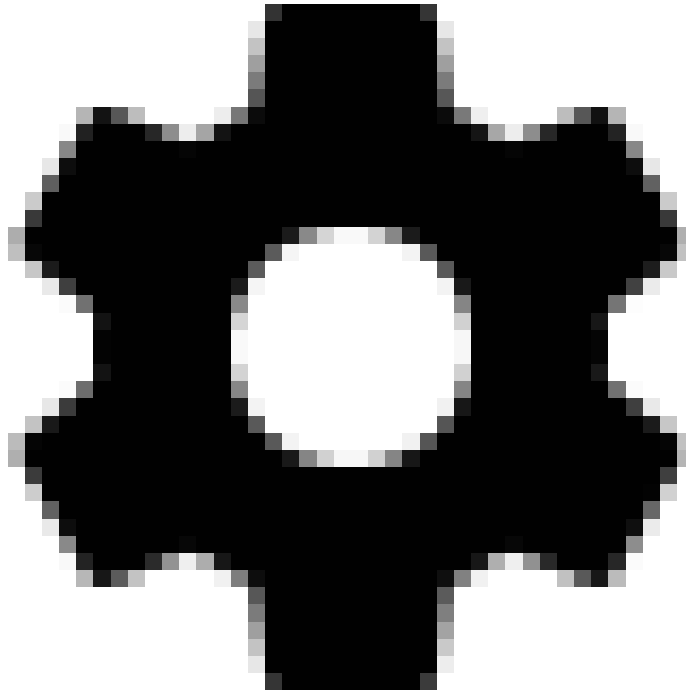
Method 7 of 8:

Logging into an Account on Android

1.

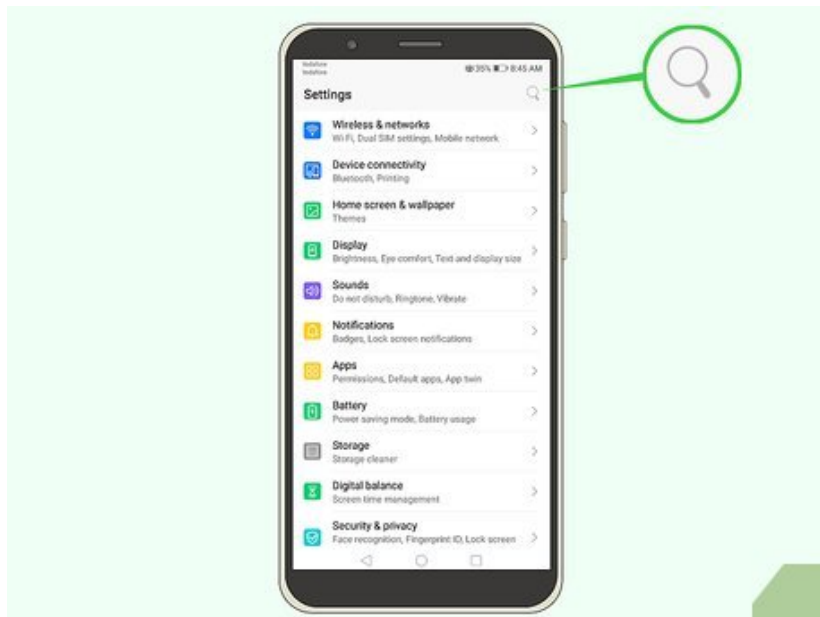


Open the Settings app



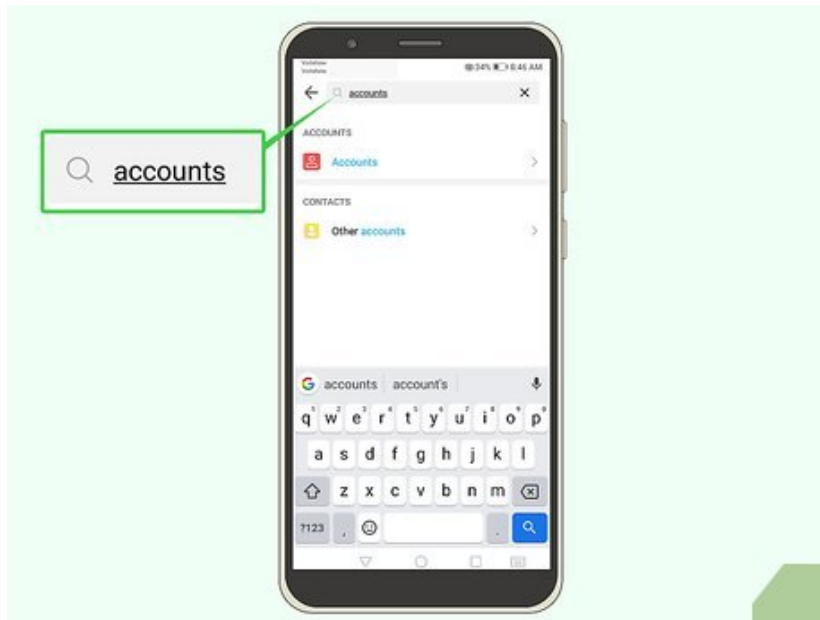
. It has an icon that resembles a gear. Tap the icon in your apps menu to open the Settings app.

2.



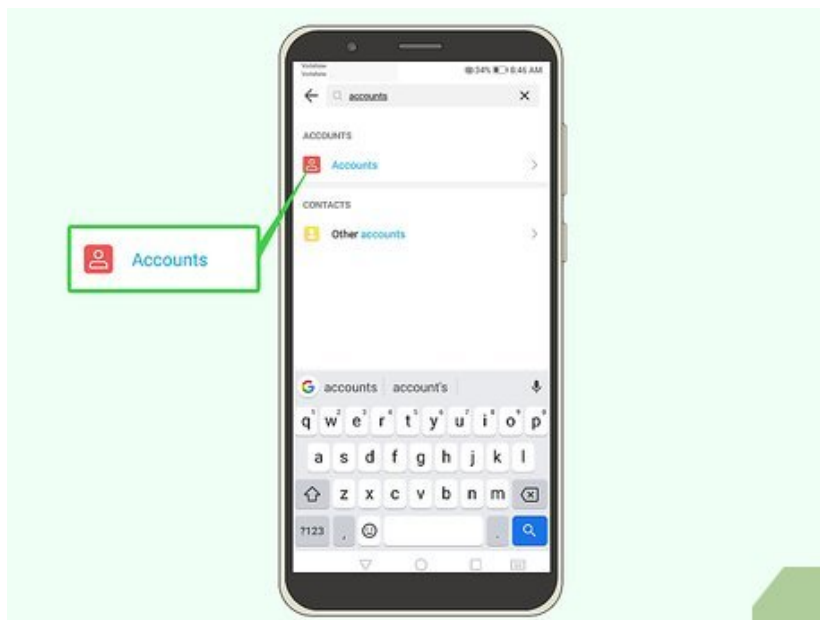
Tap the magnifying glass icon. It's in the upper-right corner of the settings apps. This displays a search bar.

3.



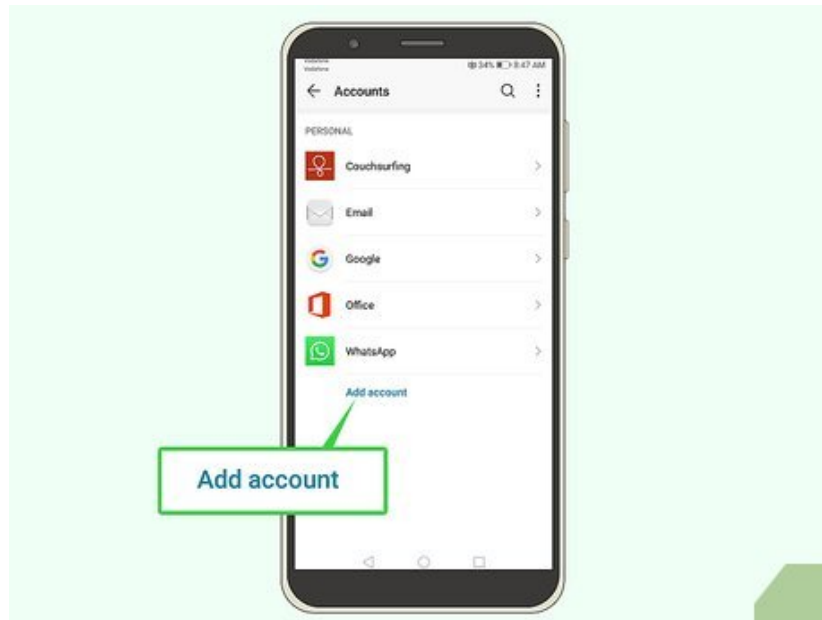
Type **Accounts** in the search bar. This displays Settings related to accounts.

4.



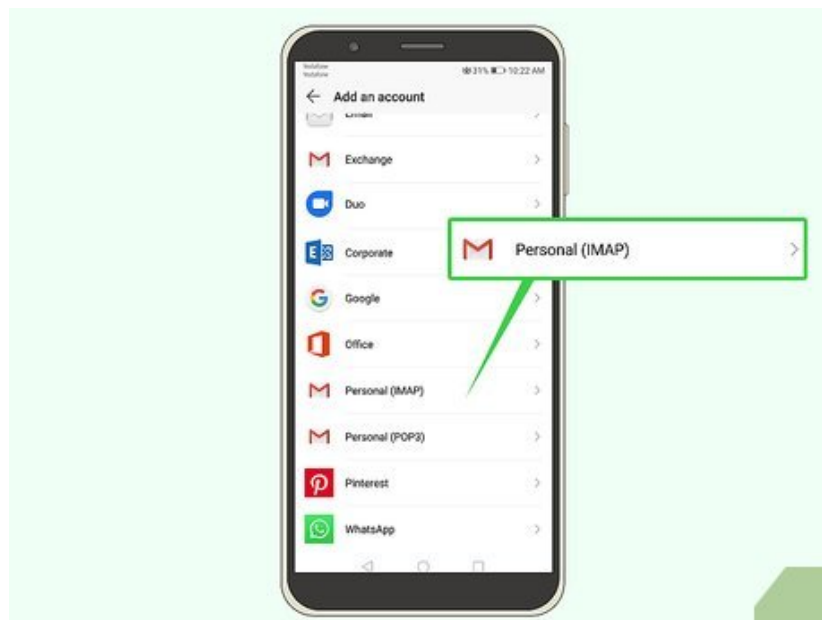
Tap **Accounts**. This displays the Accounts menu in Settings.

5.



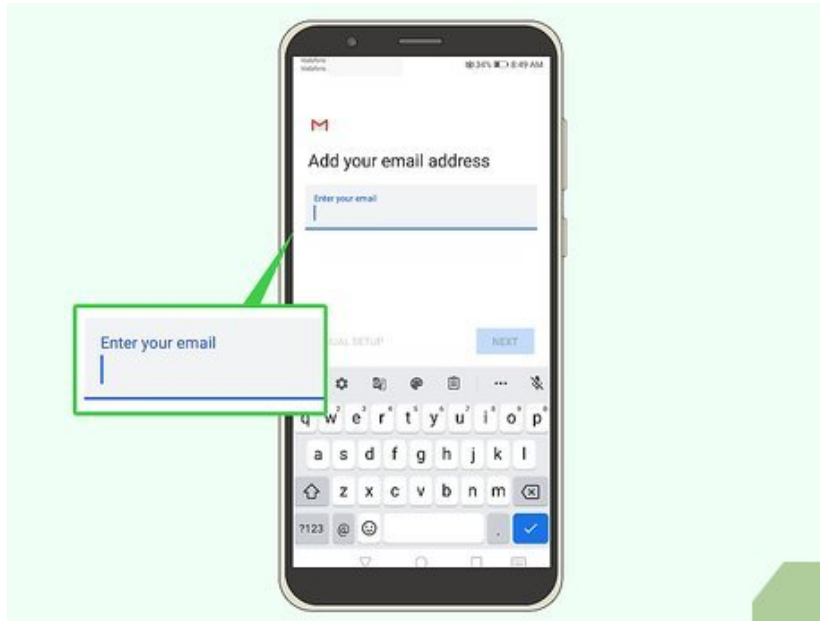
Scroll down and tap + Add Account. This allows you to sign in to a new account on your Android smartphone or tablet.

6.



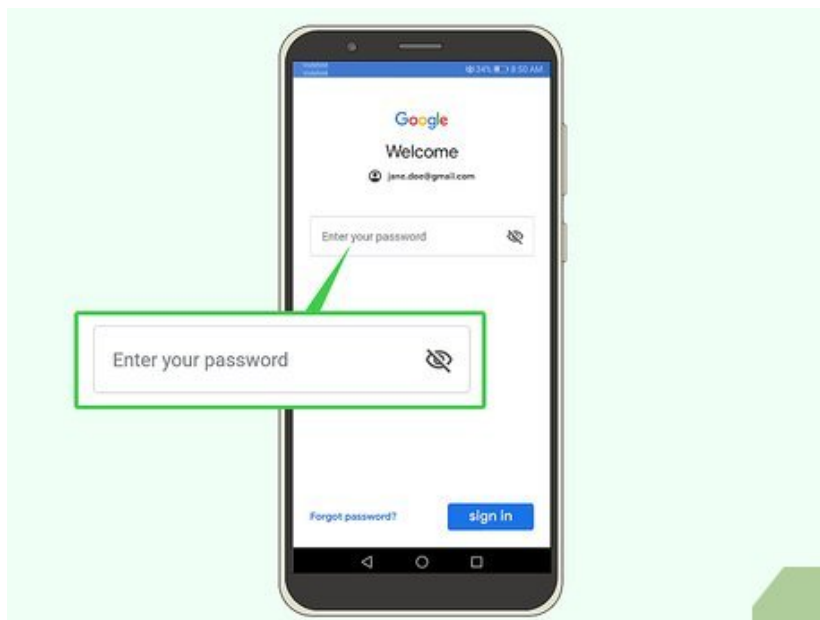
Tap the account type you want to sign in to. There are many account types you can sign in to. Tap **Google** to sign in to a Google account. It also gives you the option to sign in to Facebook, Twitter, Outlook, and more.

7.



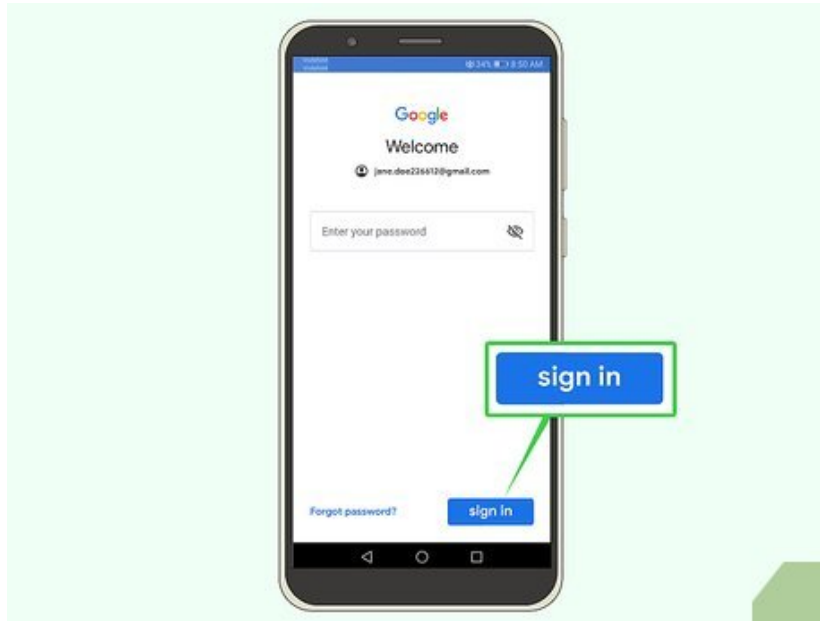
Enter your username. In most cases, this will be an email address. It may also be a username that you chose.

8.



Enter your password. This is the password you use to sign in to your account.

9.



Click **Log In** or **Sign In**. Depending on the service, click the correct button you need to sign in.

Method 8 of 8:

Logging Into Your Apple ID on iPhone or iPad

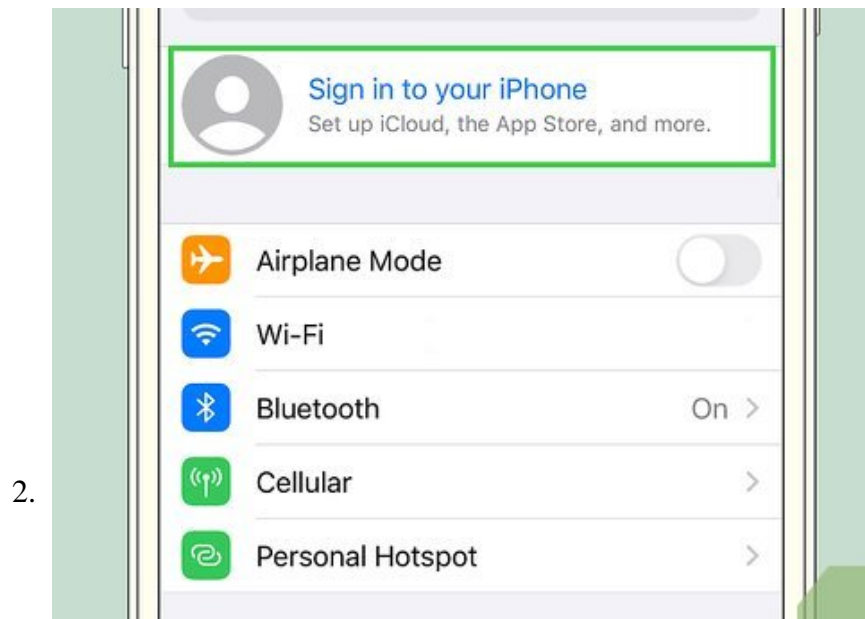
1.



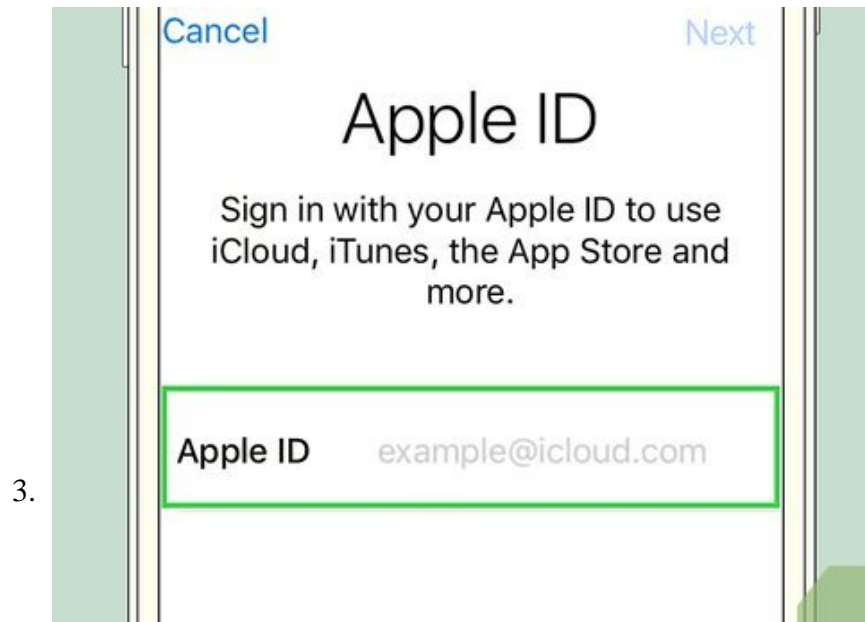
Tap the Settings app



. It has an icon that resembles a two silver gears. Tap the icon on your home screen to open the Setting menu.

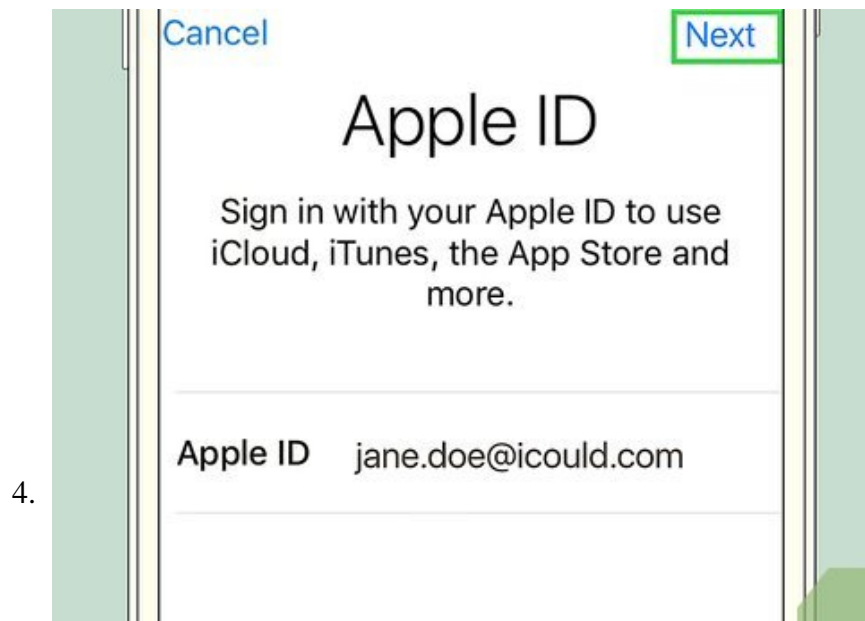


Tap **Sign in to your iPhone/iPad**. It's first option at the top fo the Settings menu.

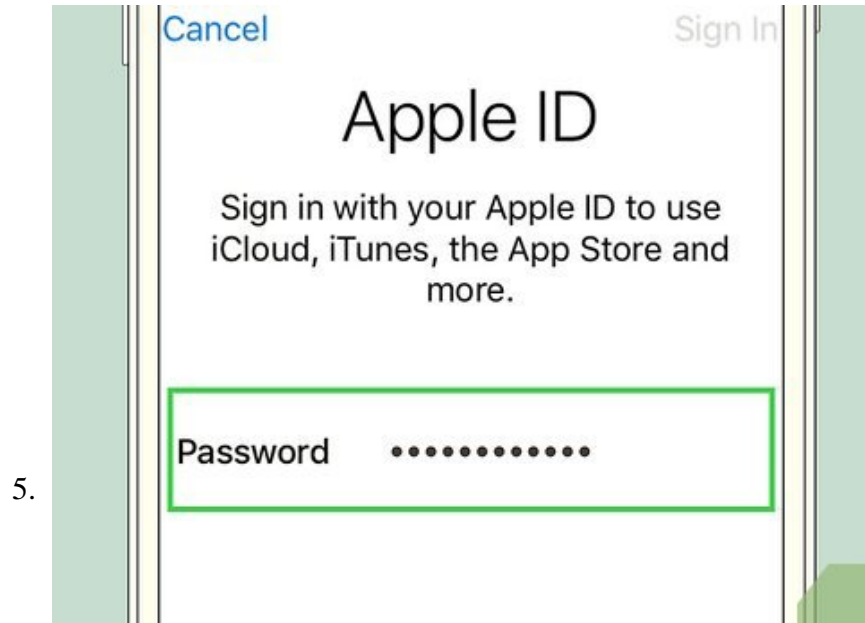


Enter the email address associated with your Apple ID. Most Apple ID emails have an "@me.com" prefix. Enter your Apple ID email address next to "Apple ID".

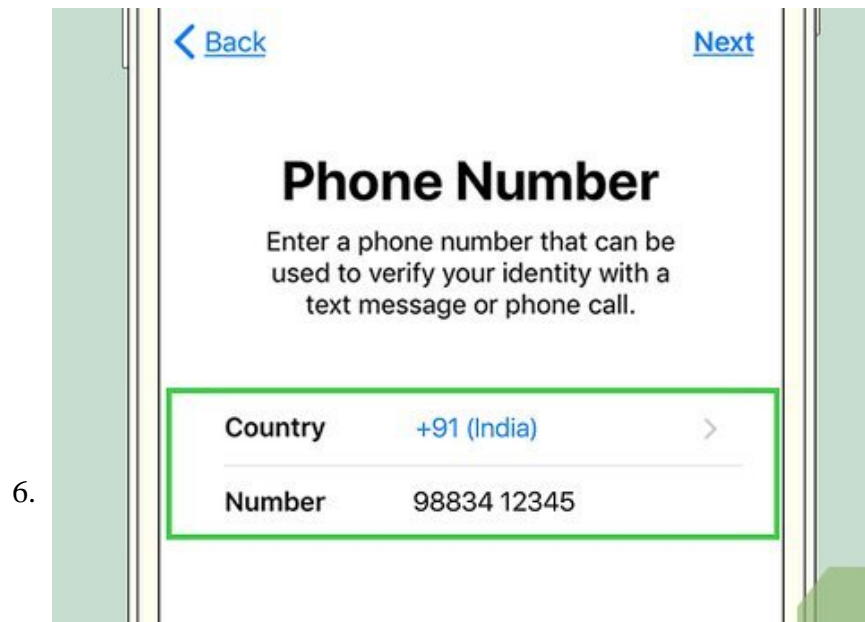
1. If you don't yet have an Apple ID, or you forgot it, tap **Don't have an Apple ID or forgot it?**



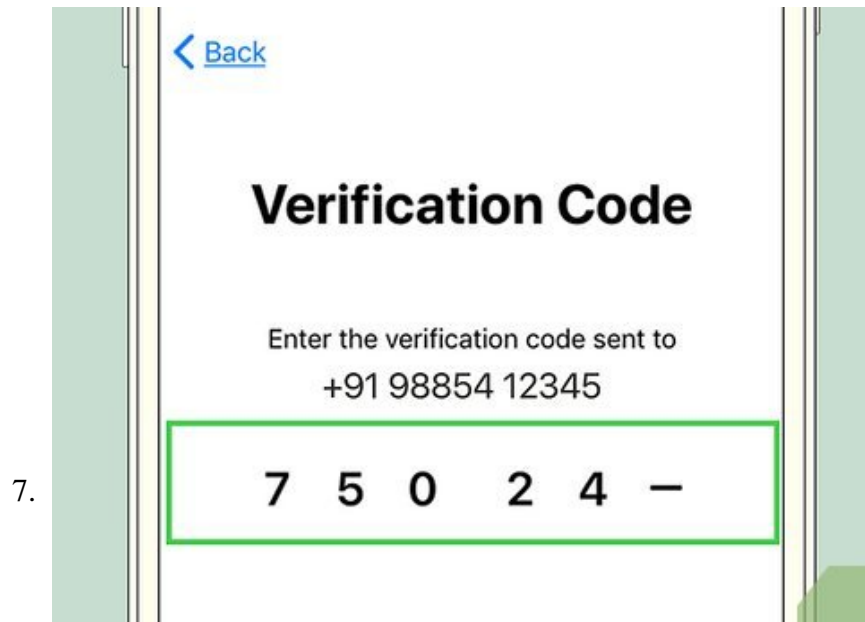
Tap **Next**. It's in the upper-right corner of the sign-in Window.



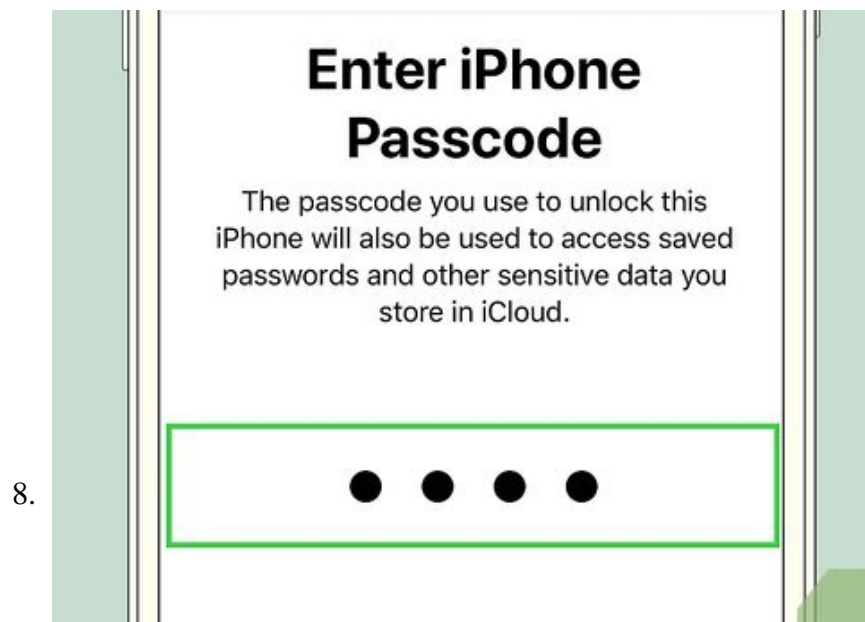
Enter your password. Enter the password associated with your Apple ID account next to "Password".



Retrieve the two-factor authentication code. The verification code used in two-factor authentication will either be sent to your Mac computer or your text messages. Retrieve the code from your computer or text messages.



Enter the verification code. After you retrieve the verification code, enter it on your iPhone or iPad.



Enter your unlock passcode. Enter the passcode you use to unlock your iPhone or iPad.

1. If you are logged into any other iPhones or iPads with your Apple ID, you may be asked to enter the passcode for those devices as well.

You finished reading the article "**How to Log In**" edited by the [TipsMake](#) team. We hope this article has provided you with many useful tech tips and tricks. You can search for similar articles on tips and guides. Thank you for reading and for following us regularly.