

How to log in to Wifi Modem Router to change Wifi name and password

Changing the Wifi network name (SSID) and password not only helps increase security but also improves your internet experience. Let's explore the steps to log in to Wifi Modem Router to manage your Wifi network right away.

WiFi has become an indispensable part of every household, with a series of devices connecting every day. To secure and optimize network performance, managing and changing WiFi passwords is extremely important. Secure your home network from security risks by changing your WiFi name and password regularly.

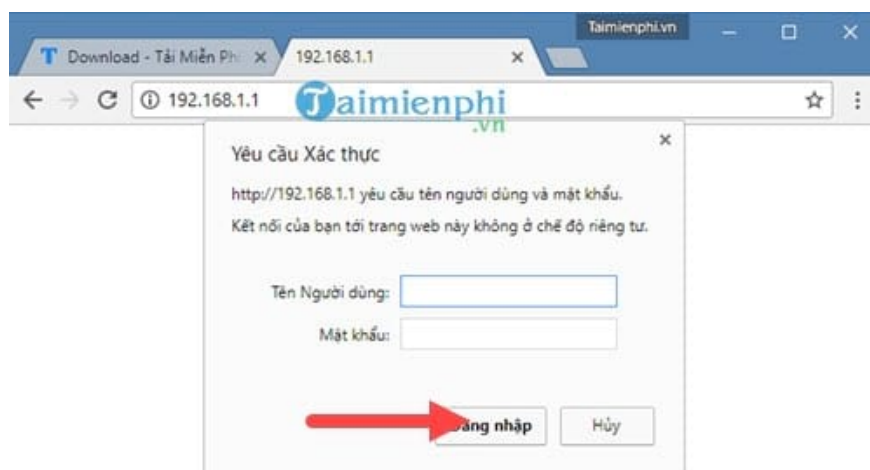
Instructions for logging into WiFi, changing WiFi password

Before logging into WiFi, you need to know how to access the Modem.

- Normally, the WiFi IP address is in the form of **192.168.1.1** or **192.168.0.1**
- Some Modems use a separate link printed on the back of the device.
- In case you use an old device and want to log in to WiFi or change the WiFi password, follow the instructions below to **find the WiFi IP address** .

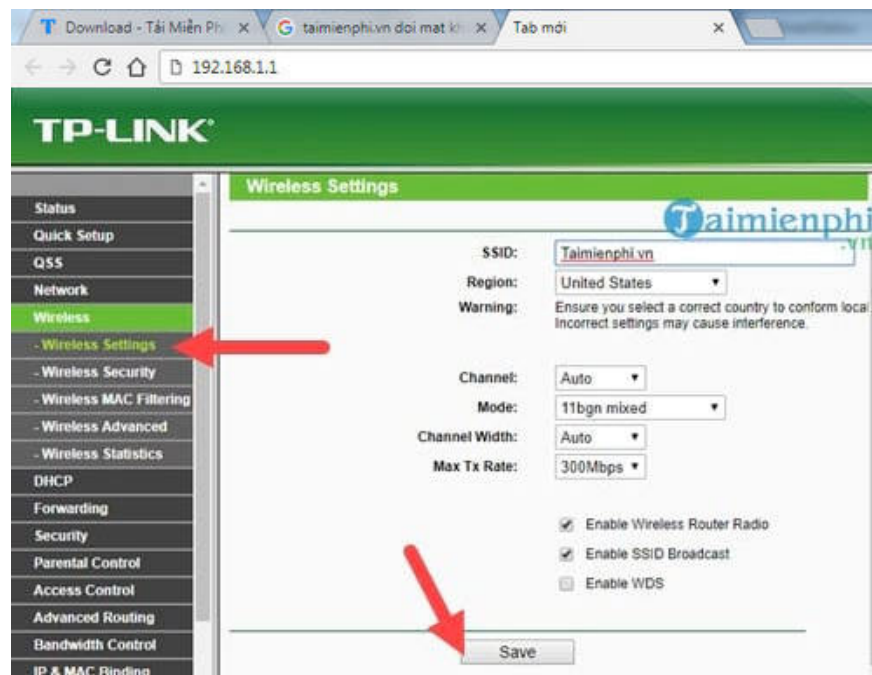
Instructions for changing WiFi name

Step 1: If your home network connection has only 1 WiFi, you don't need to unplug the wire and can access it directly. Otherwise, just plug the WiFi modem into your laptop or follow the suggestions above to know how.



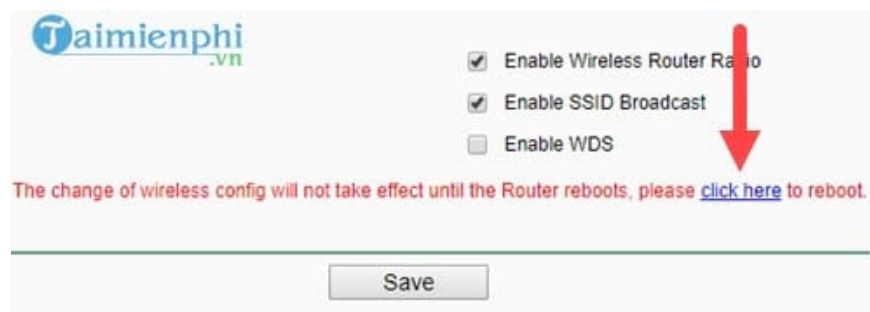
As usual, we access the familiar address 192.168.1.1 to log in to the WiFi Modem.

Step 2: Here TipsMake takes the Tp Link model as an example, but with other models, even from different brands, the WiFi login and wifi name change are no different.

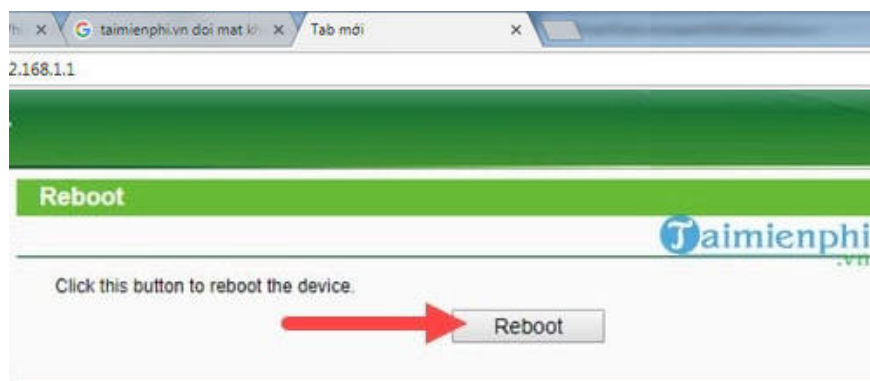


With this Modem, you can see that in the **Wireless Settings** section, the **SSID** section is where you can **change the wifi name** without any restrictions. After changing the name, click Save to save the newly renamed settings.

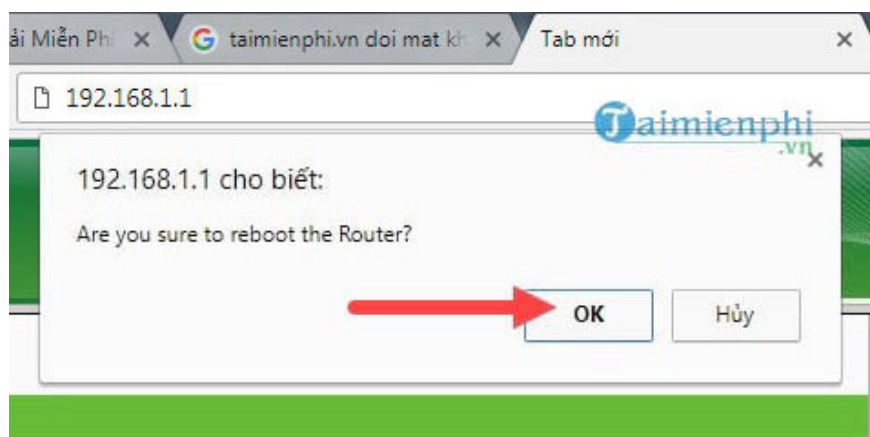
Step 3: Next, click **Click here** to reboot WiFi, confirming the successful renaming.



A screen will continue to open and you just need to click **Reboot** to complete the process.



Step 4: The system will warn you again about rebooting the device, so just press **OK** to confirm.

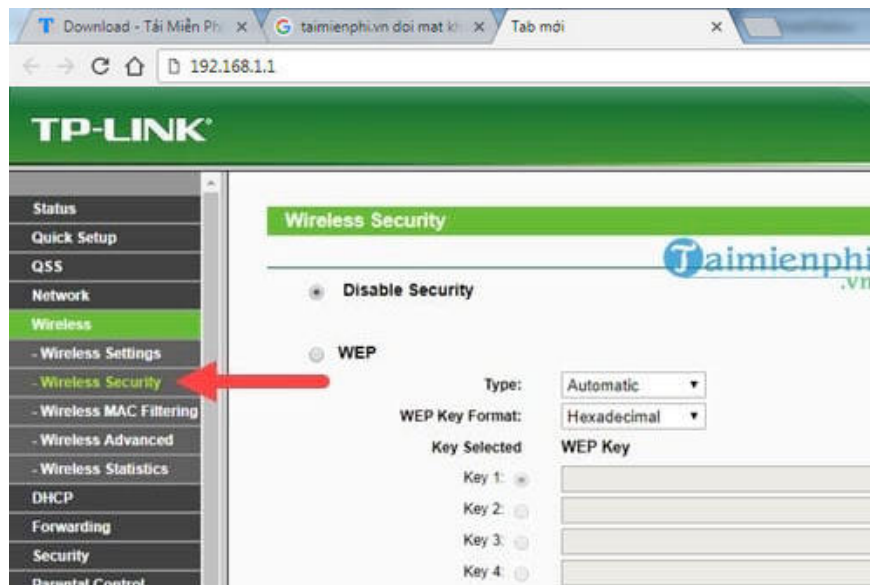


Step 5: After successful confirmation, you can open the list of connectable WiFi and will see that the WiFi renaming was successful.



Instructions for changing WiFi password.

Step 1: We will log in first, you can see the login instructions above and now we will go to change the password in the **Wireless Security** section .



Step 2: There are 4 options with 3 different security types. Readers can read more about security types here.

- **Disable Security:** If you use this mode, your WiFi will be completely free and without a password.
- **WEP:** An old security standard, running on 256-bit WEP technology and is still one of the most widely used

standards in the past.

- **WPA:** Extremely secure WiFi security standard, allowing the use of a combination of characters and letters for your password.

- **WPA 2:** The latest standard to upgrade the current WPA, the most popular and widely used with strong security capabilities, advanced protection algorithms and to date no one has been able to completely crack this system.

The screenshot shows a web browser window with the URL `taimienphi.vn` and a page title `Tab mới`. The page content is a configuration interface for wireless security, with a green header bar and the `taimienphi.vn` logo. The interface is organized into several sections:

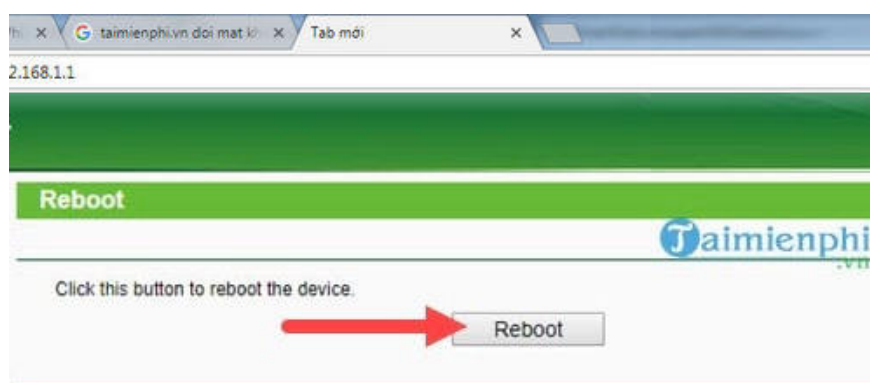
- Disable Security:** A radio button option.
- WEP:** Includes a `Type` dropdown set to `Automatic`, a `WEP Key Format` dropdown set to `Hexadecimal`, and a table for `WEP Key` settings. The table has columns for `Key Selected`, `WEP Key`, and `Key Type`. Four keys are listed, all with `Disabled` key types.
- WPA/WPA2:** Includes a `Version` dropdown set to `Automatic`, an `Encryption` dropdown set to `Automatic`, a `Radius Server IP` field, a `Radius Port` field set to `1812`, a `Radius Password` field, and a `Group Key Update Period` field set to `0`.
- WPA-PSK/WPA2-PSK:** This section is highlighted with a red arrow. It includes a `Version` dropdown set to `Automatic`, an `Encryption` dropdown set to `Automatic`, a `PSK Password` field containing `taimienphi`, and a `Group Key Update Period` field set to `0`.

And of course we will choose the safest standard today, which is **WPA-PSK/ WPA2-PSK** . Changing the password is also very simple, when finished you click Save.

Step 3: Next, click here and choose to **reboot** the device as instructed above.



Step 4: Click on **Reboot** and then restart the device, when you log in to WiFi again you will see that the WiFi password has been changed.



Above is a detailed guide on how to log in to Wifi Modem Router to change WiFi name and password from TipsMake. Hopefully, with this method, you will not only improve your WiFi experience but also understand more about basic but useful features such as renaming and changing network password. Although it is a simple operation, these are very important steps to secure and maintain effective daily WiFi use.

If you are using a TP-Link modem to broadcast WiFi, changing **the TP-Link modem password** is one of the effective ways to protect network information. TipsMake has provided detailed instructions for this operation, you can refer to it immediately if you have not done it successfully!

You finished reading the article "**How to log in to Wifi Modem Router to change Wifi name and password**" edited by the [TipsMake](#) team. We hope this article has provided you with many useful tech tips and tricks. You can search for similar articles on tips and guides. Thank you for reading and for following us regularly.