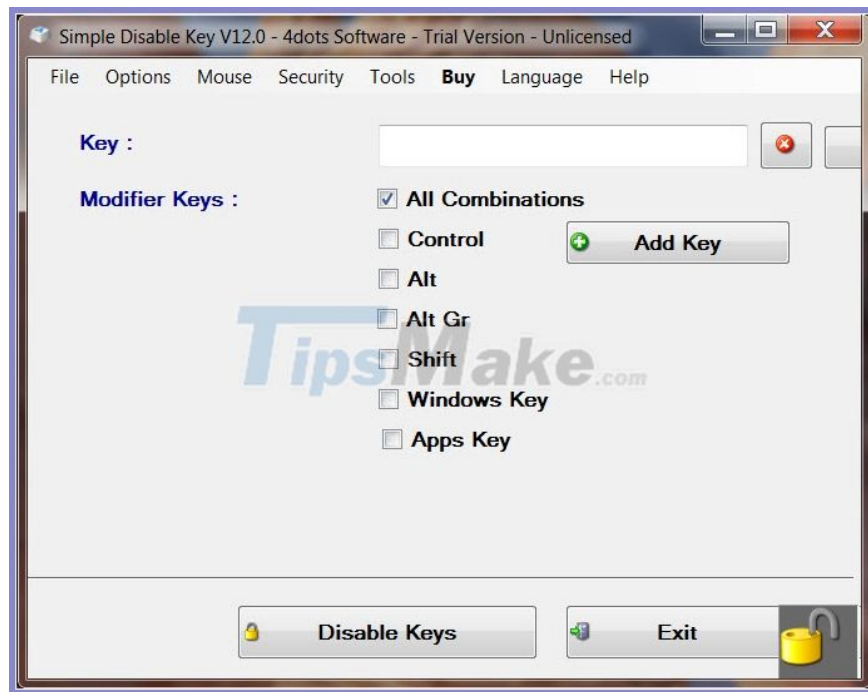


How to lock the laptop keyboard to use the removable USB keyboard

To use your keyboard, you should turn off the keyboard on the computer in case of a mistake. The laptop keyboard is compact, but it makes us experience the feeling of typing not as fast and hands-free as when using the removable key.

The laptop keyboard is compact but makes us experience the feeling of typing is not as fast and "hands-free" as when using a keyboard. To use your keyboard, you should turn off the keyboard on the computer in case of a mistake.

1. Using software Simple Disable Key



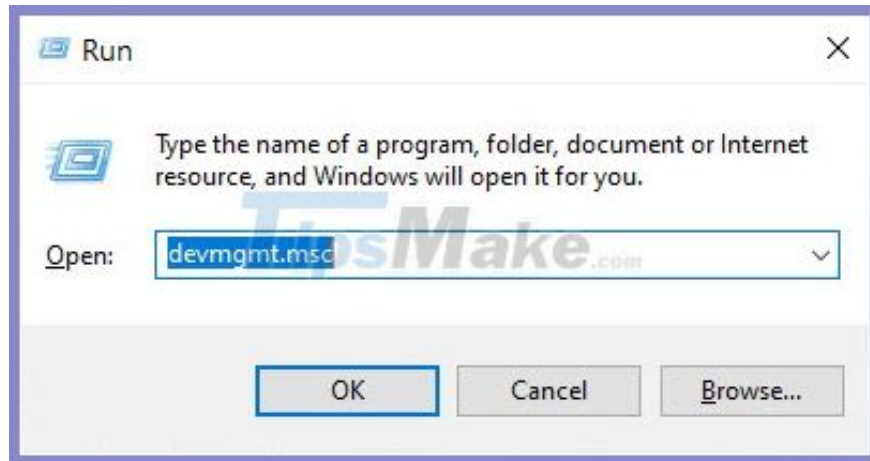
Simple Disable Key allows you to temporarily lock the Laptop keyboard according to the time setting. In addition, this software can also turn off a few function keys or faulty keys to avoid the case you press wrong.

Software download link [here](#)

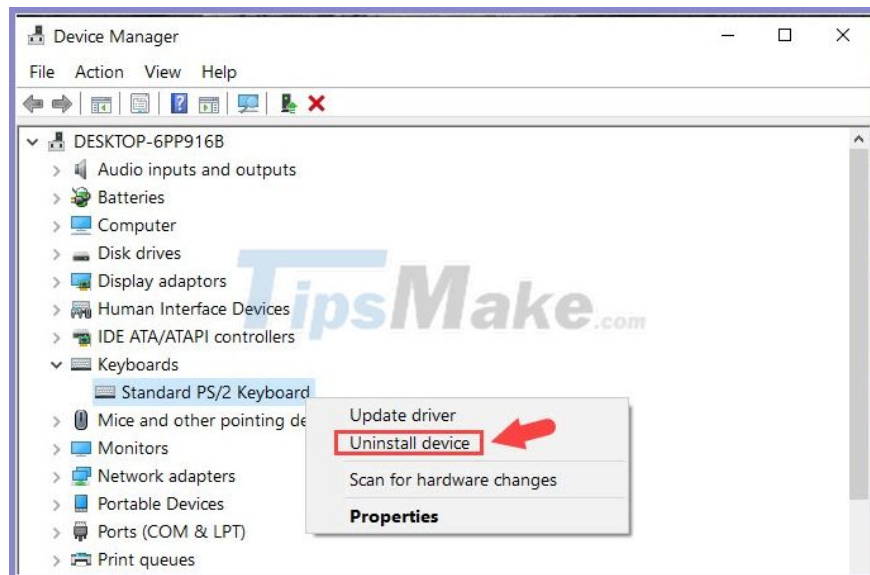
2. Delete the laptop keyboard driver

This can cause the keyboard to malfunction, so you can do this when your keyboard fails and you absolutely have to use the space key. Proceed as follows:

Step 1: You press the key combination **Windows + R** . Next, enter the command **devmgmt.msc** and click **OK** .



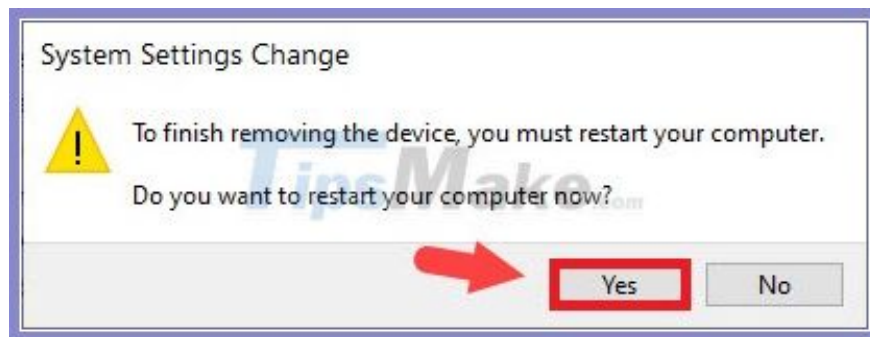
Step 2: Look for the Keyboards item, right-click on **Standard PS / 2 Keyboard** => **Uninstall device** .



Step 3: You choose **Uninstall** to continue.



Step 4: Click **Yes** to restart the computer and turn off the keyboard on the laptop.



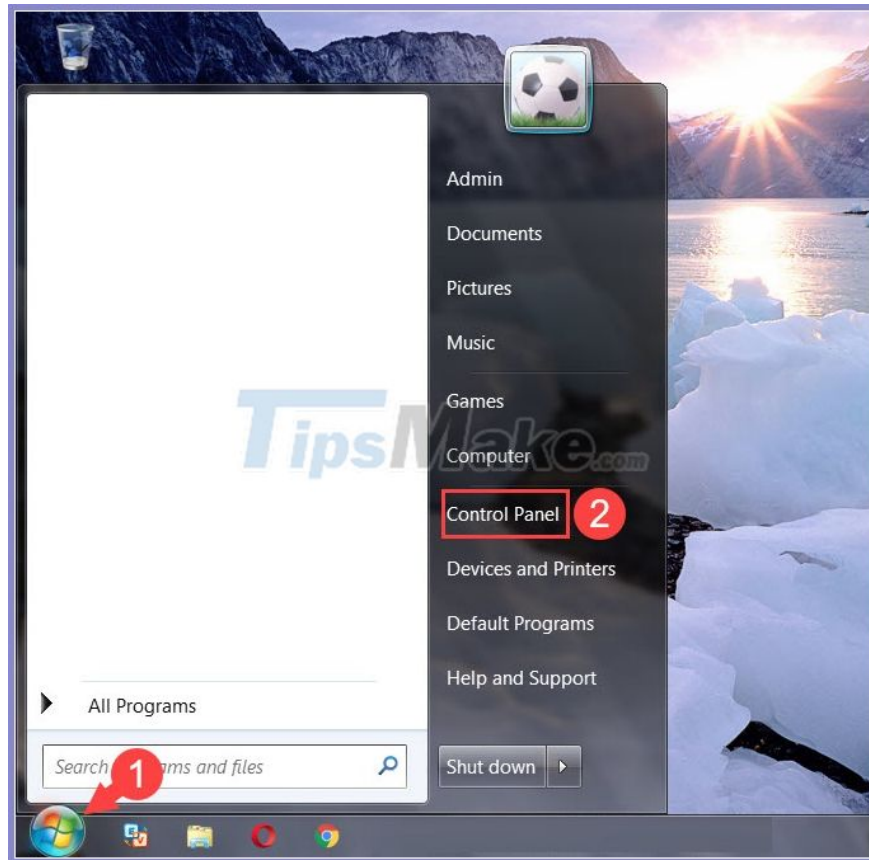
In addition, you can refer to other keyboard shortcuts in TipsMake.com's previous article in the following link:
[http://TipsMake.vn/cach-tat-ban-phan-laptop-de-su-dung -movies-from-year-old /](http://TipsMake.vn/cach-tat-ban-phan-laptop-de-su-dung-movies-from-year-old/)

3. Unlock the laptop keyboard when needed

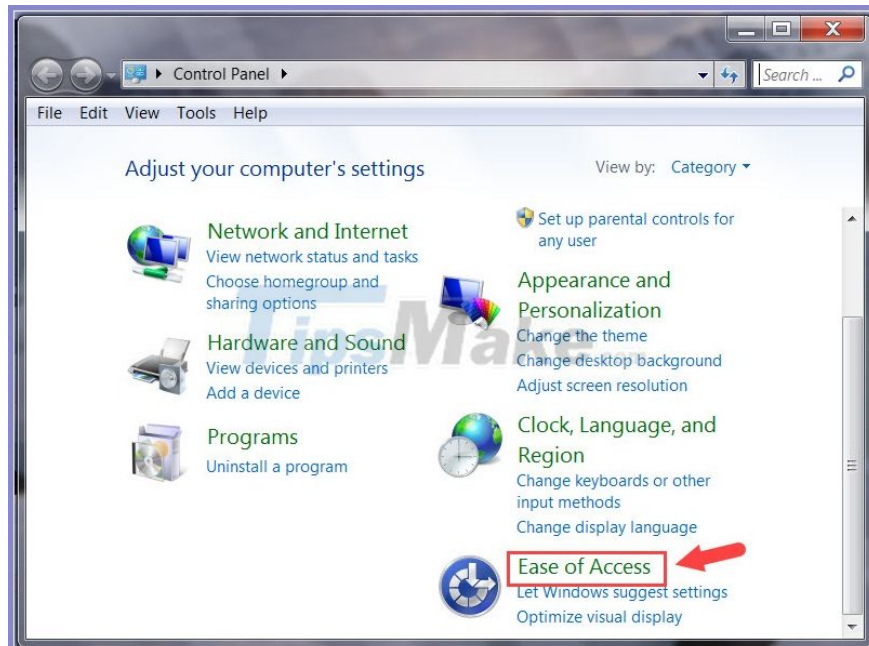
In case you want to restore the laptop keyboard, please follow the instructions below:

On Windows 7

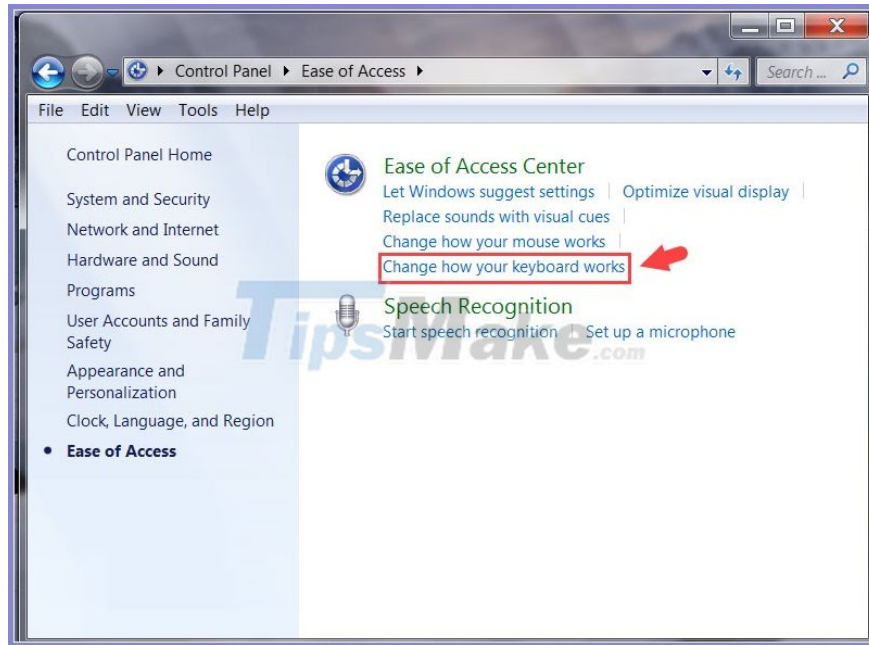
Step 1: Click on **Start (1)** => **Control Panel (2)** .



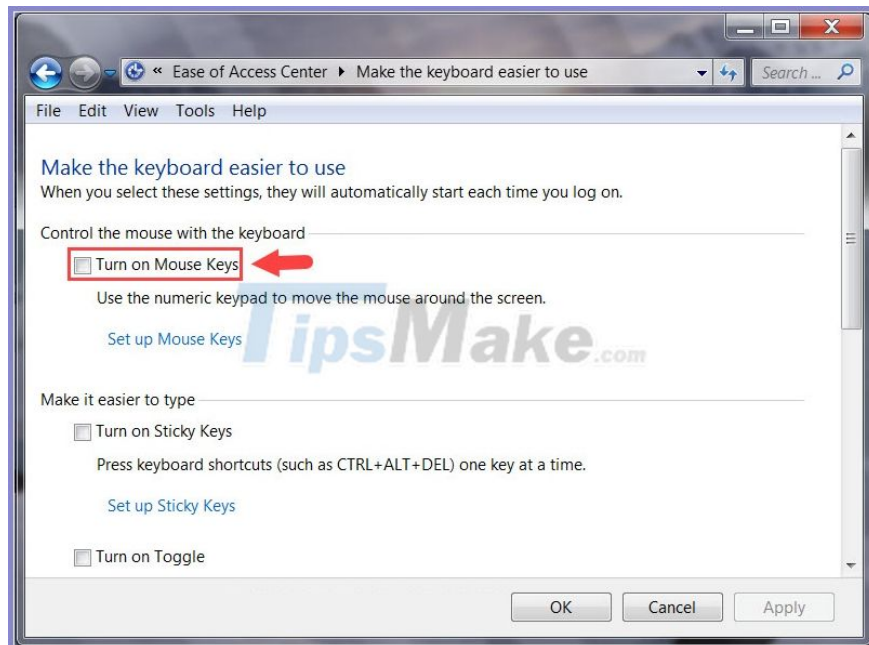
Step 2: Click on **Ease of Access** .

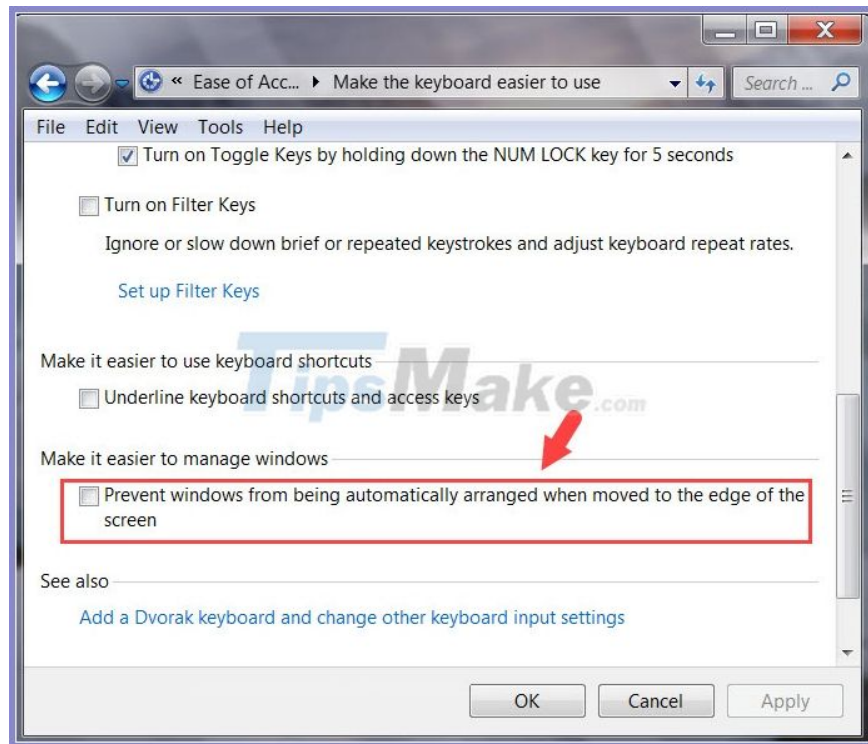


Step 3: Select **Change how your keyboard works** .



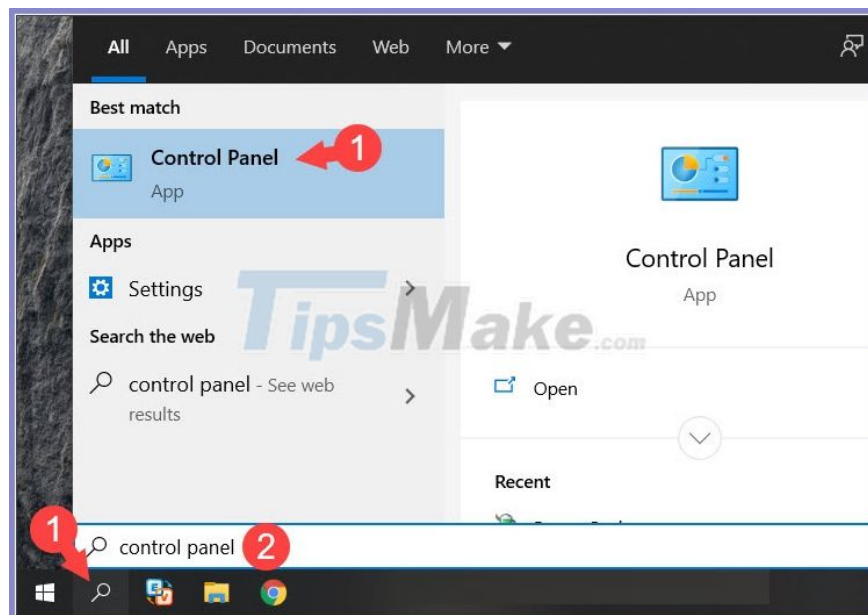
Step 4: Uncheck the checkbox for **Turn on Mouse Keys** and **Prevent windows from being automatically arranged when moved to the edge of the screen** .



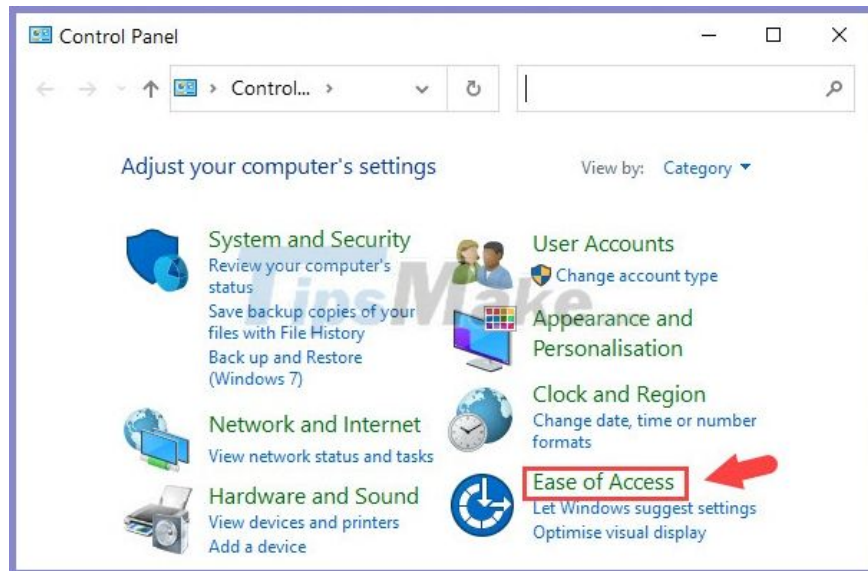


On Windows 10

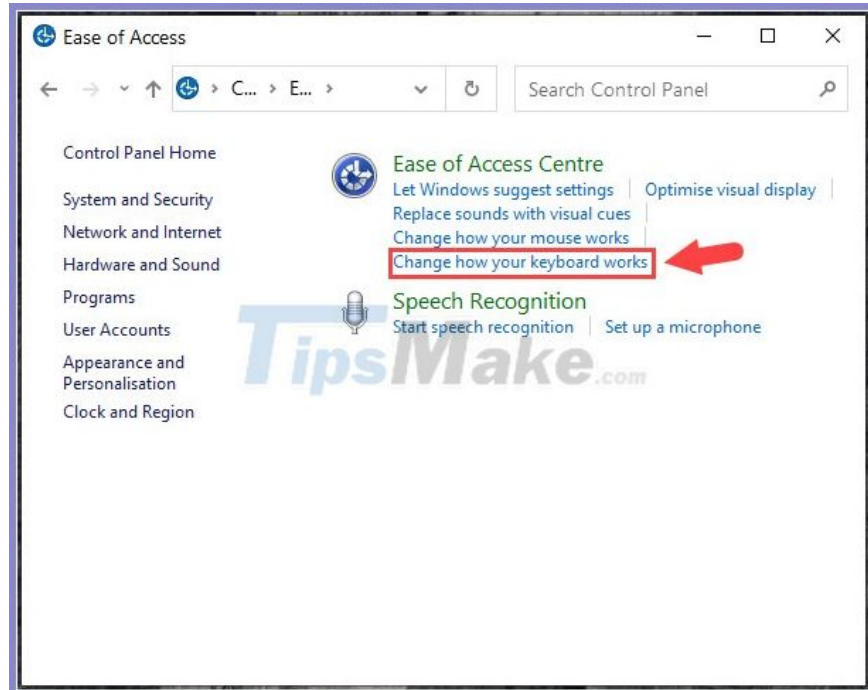
Step 1: You click on **Search** (1) or using the key combination **Windows + S** . Next, you search for keyword **control panel** (2) => click **Control Panel** (3) .



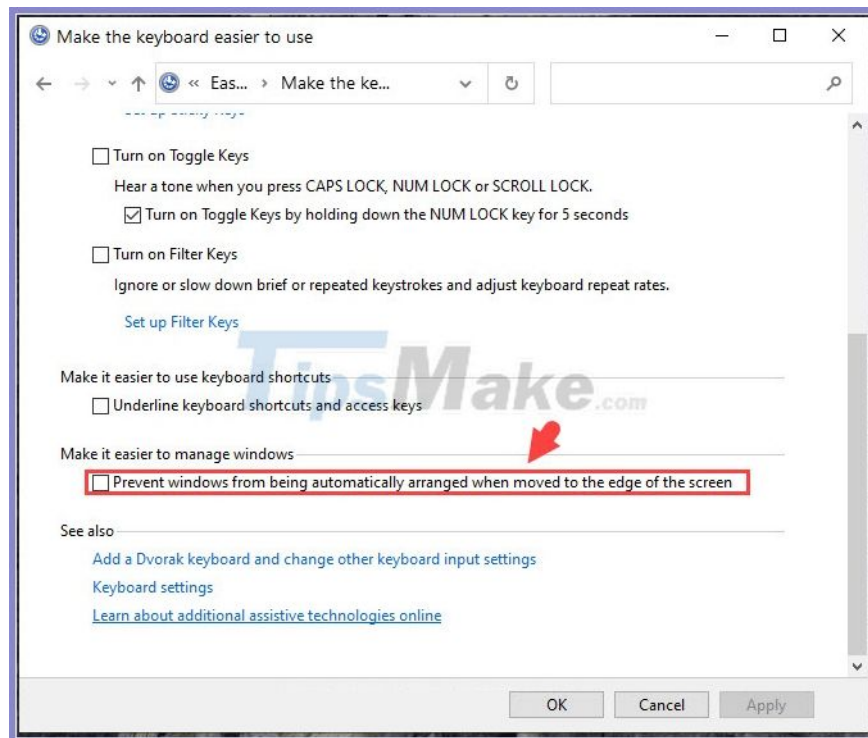
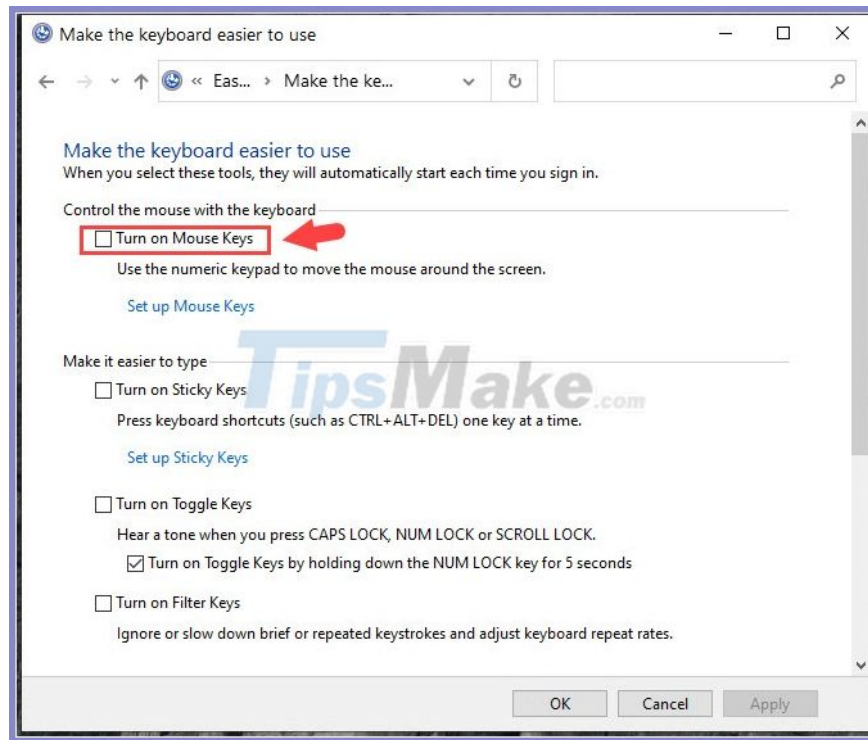
Step 2: Click on **Ease of Access** .



Step 3: Click **Change how your keyboard works** .



Step 4: Next, **uncheck the checkbox for Turn on Mouse Keys and Prevent windows from being automatically arranged when moved to the edge of the screen** .



With the instructions to lock the laptop keyboard to use the removable USB keyboard in the article, you can easily turn off the keyboard not used on the laptop to avoid typing mistakes. Good luck!

You finished reading the article "**How to lock the laptop keyboard to use the removable USB keyboard**" edited by the [TipsMake](#) team. We hope this article has provided you with many useful tech tips and tricks. You can search for similar articles on tips and guides. Thank you for reading and for following us regularly.
