

# How to List Installed Drivers in Windows (PowerShell CMD)

If you need to know which drivers are installed in your system, then here is a simple PowerShell command that lists drivers installed in Windows.

## The importance of drivers in Windows

In Windows, you need drivers for everything. In fact, finding and installing drivers has become a major problem in previous versions of Windows. However, in Windows 10, the system can automatically install all the necessary drivers, as long as they are connected to the Internet.

Of course, you'll also need to manually install important drivers like the graphics drivers to make sure they're up to date and compatible. After installing the driver, you can get details about the installed driver from **Device Manager** . Actually, you can also uninstall, restore or update the driver from **Device Manager** .

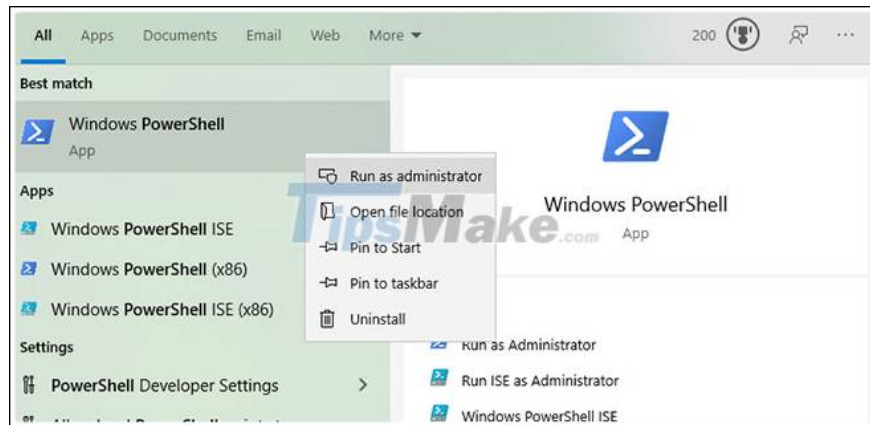
While you can get driver details such as version number, vendor, boot control, installation date, etc. from **Device Manager** , you must manually select each device and open its properties. it to see those details. However, with a simple PowerShell command, you can get the complete list of Windows drivers on one screen.

I will show you how to list all the drivers installed in Windows using PowerShell command.

## The PowerShell command lists the installed drivers

Since you are dealing with drivers, admin privileges are required for a complete list of installed Windows drivers. Just follow the steps as follows.

Step 1. First, open PowerShell as admin.

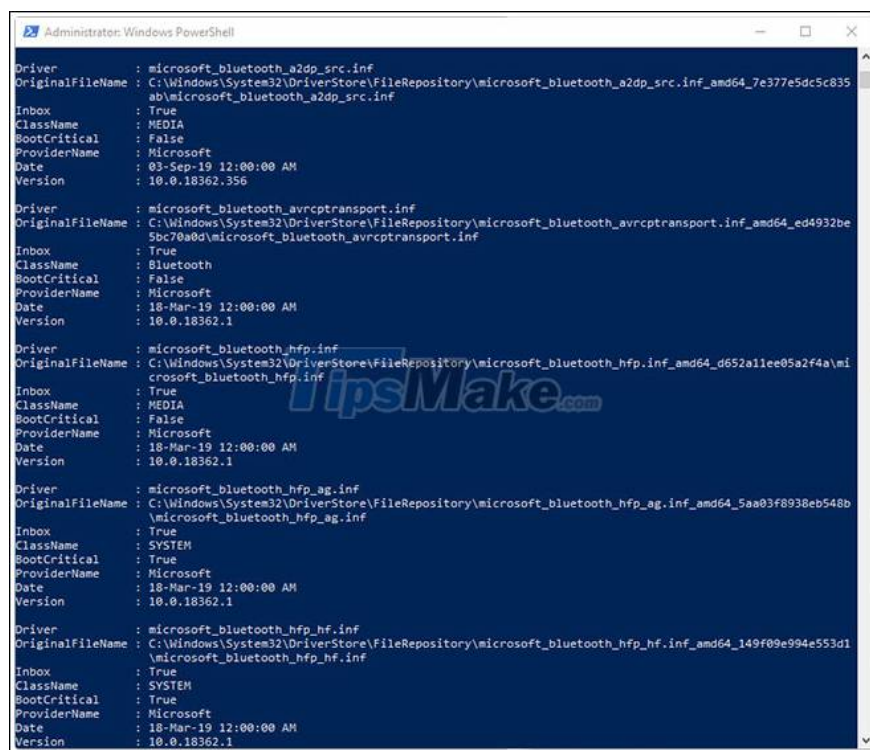


Step 2. In the PowerShell window, execute the command below by copying and pasting.

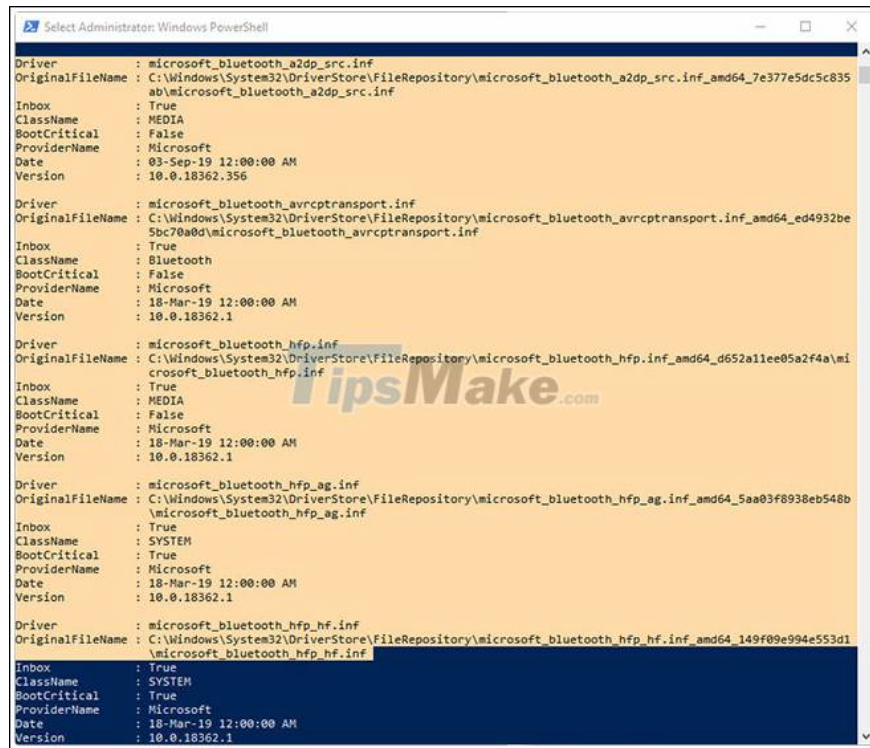
**Quick tip :** After copying the command, right-click in the PowerShell window to paste.

```
Get-WindowsDriver -Online -All
```

Step 3. Immediately after you execute the command, the relevant cmdlet will scan your system and list all installed drivers, as well as their details.



Step 4. Once you have the driver list, you can copy it to a text file for access anytime you want without having to execute cumbersome commands. To do that, select the full list with your mouse and right click to copy. Next, create a new text file and press the **Ctrl+V** keyboard shortcut to paste the copied list. Press **Ctrl+S** to save the text file.



```
Select Administrator: Windows PowerShell
Driver : microsoft_bluetooth_a2dp_src.inf
OriginalFileName : C:\Windows\System32\DriverStore\FileRepository\microsoft_bluetooth_a2dp_src.inf_amd64_7e377e5dc5c835ab\microsoft_bluetooth_a2dp_src.inf
Inbox : True
ClassName : MEDIA
BootCritical : False
ProviderName : Microsoft
Date : 03-Sep-19 12:00:00 AM
Version : 10.0.18362.356

Driver : microsoft_bluetooth_avrcptransport.inf
OriginalFileName : C:\Windows\System32\DriverStore\FileRepository\microsoft_bluetooth_avrcptransport.inf_amd64_ed4932be5bc70a0d\microsoft_bluetooth_avrcptransport.inf
Inbox : True
ClassName : Bluetooth
BootCritical : False
ProviderName : Microsoft
Date : 18-Mar-19 12:00:00 AM
Version : 10.0.18362.1

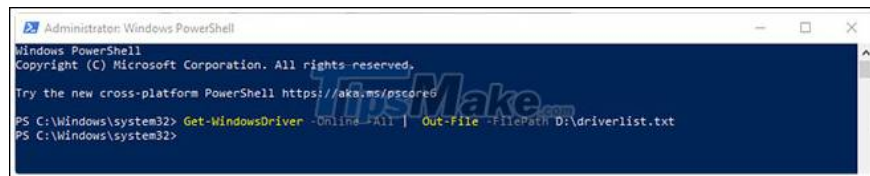
Driver : microsoft_bluetooth_hfp.inf
OriginalFileName : C:\Windows\System32\DriverStore\FileRepository\microsoft_bluetooth_hfp.inf_amd64_d652a11ee05a2f4a\microsoft_bluetooth_hfp.inf
Inbox : True
ClassName : MEDIA
BootCritical : False
ProviderName : Microsoft
Date : 18-Mar-19 12:00:00 AM
Version : 10.0.18362.1

Driver : microsoft_bluetooth_hfp_ag.inf
OriginalFileName : C:\Windows\System32\DriverStore\FileRepository\microsoft_bluetooth_hfp_ag.inf_amd64_5aa83f8938eb548b\microsoft_bluetooth_hfp_ag.inf
Inbox : True
ClassName : SYSTEM
BootCritical : True
ProviderName : Microsoft
Date : 18-Mar-19 12:00:00 AM
Version : 10.0.18362.1

Driver : microsoft_bluetooth_hfp_hf.inf
OriginalFileName : C:\Windows\System32\DriverStore\FileRepository\microsoft_bluetooth_hfp_hf.inf_amd64_149f89e994e553d1\microsoft_bluetooth_hfp_hf.inf
Inbox : True
ClassName : SYSTEM
BootCritical : True
ProviderName : Microsoft
Date : 18-Mar-19 12:00:00 AM
Version : 10.0.18362.1
```

Another way is to use the following command to automatically save the PowerShell output to a text file. Modify the file path according to your needs.

```
Get-WindowsDriver -Online -All | Out-File -FilePath D:\driverlist.txt
```



```
Administrator: Windows PowerShell
Windows PowerShell
Copyright (C) Microsoft Corporation. All rights reserved.

Try the new cross-platform PowerShell https://aka.ms/pscore6

PS C:\Windows\system32> Get-WindowsDriver -Online -All | Out-File -FilePath D:\driverlist.txt
PS C:\Windows\system32>
```

Step 6. Now you can close the PowerShell window either by clicking on the **X** icon or by entering a command `exit`.

It's simple to get the list of installed drivers in Windows with a simple PowerShell command.

Hope you are successful.

You finished reading the article "**How to List Installed Drivers in Windows (PowerShell CMD)**" edited by the [TipsMake](#) team. We hope this article has provided you with many useful tech tips and tricks. You can search for similar articles on tips and guides. Thank you for reading and for following us regularly.