

How to limit data with Data Validation in Google Sheets

The Data validation function is used to prevent users from entering anything other than correctly formatted data within a specific range. And this is how to use it.

If you use Google Sheets to collaborate with others, you can prevent people from entering the wrong data in spreadsheet cells. The Data validation function is used to prevent users from entering anything other than correctly formatted data within a specific range. And this is how to use it.

1. How to limit the value entered by Data Validation Excel
2. 3 basic methods to avoid data entry errors in Excel
3. How to create duplicate data entry notifications on Excel

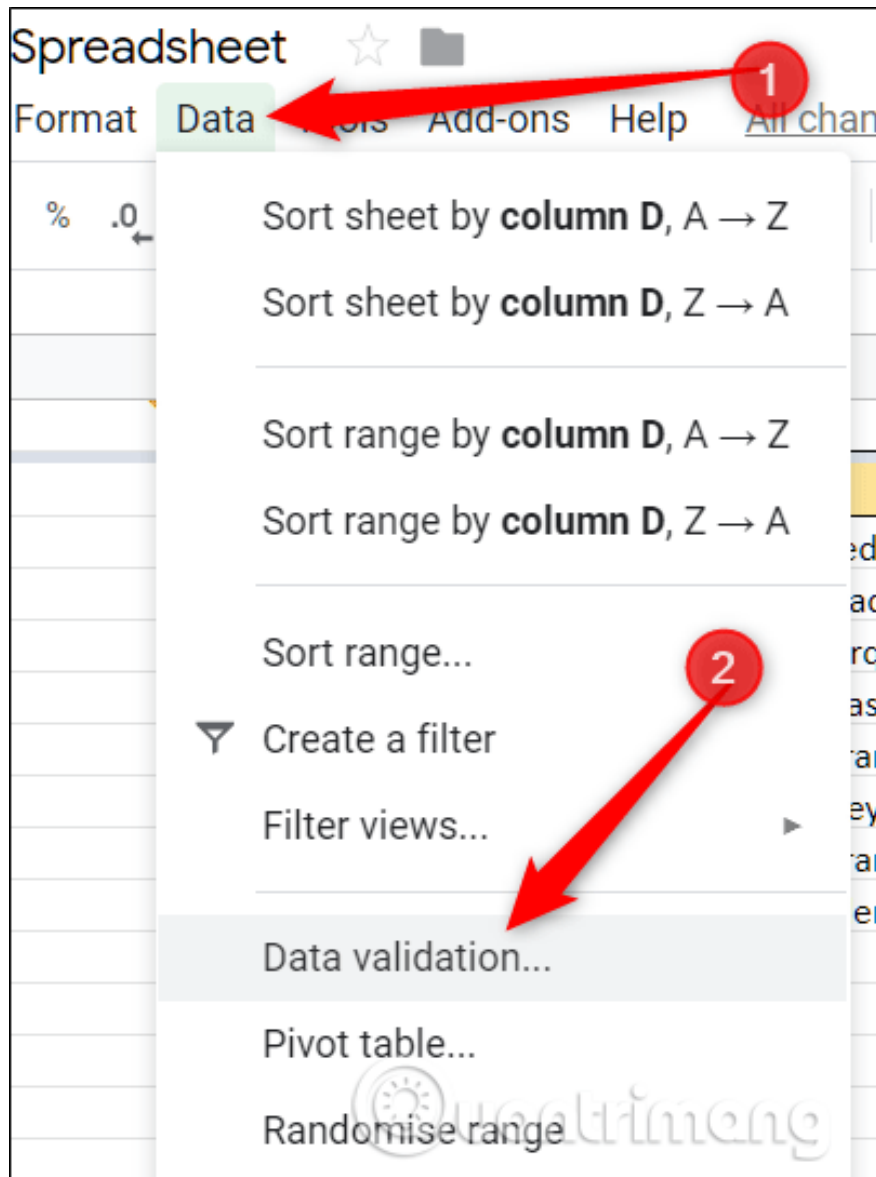
How to use Data Validation in Google Sheets

Open your browser, visit the Google Sheets homepage, open the spreadsheet and select the range you want to limit.

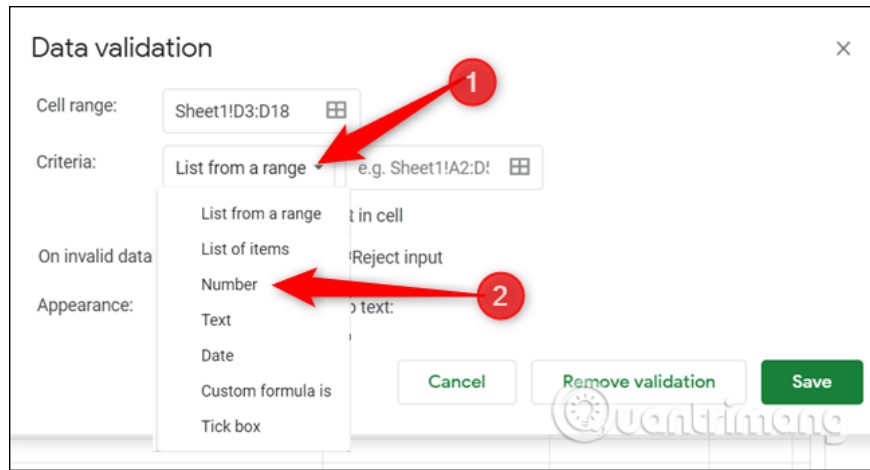
Title	Director	Year
French Connection	William Friedkin	1971
Three Days of the Condor	Sydney Pollack	1975
The Return of the Jedi	Richard Marquand	1983
The Phantom Menace	George Lucas	1999
Pulp Fiction	Quentin Tarantino	1994
The Wrath of Khan	Nicholas Meyer	1982
Reservoir Dogs	Quentin Tarantino	1992
Mad Max	George Miller	1980
Space balls	Mel Brooks	1987



Click **Data** and then select **Data Validation** .



In the Data validation window that appears, click on the drop-down menu next to **Criteria** , select the specific input type for the selected cells. For this example, we need everyone to enter a four-digit number for the year of the movie's release, so select the **Number** option. You can choose other criteria such as text, date, predefined option list, item from specific scope or your custom limit formula.

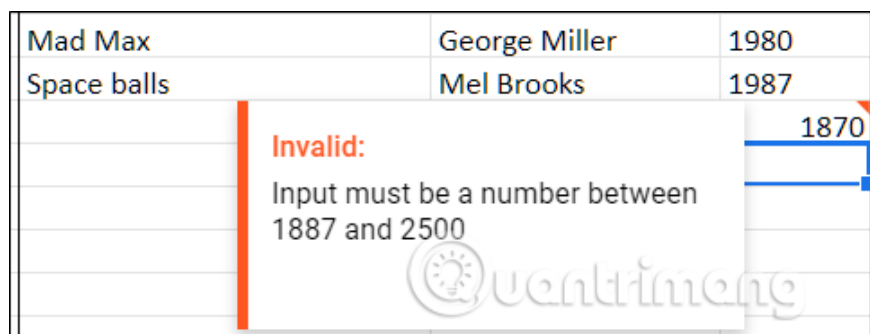


Each of these options has its own values ??you need to specify correctly to limit the data entered into each cell. Here, since we only want five movies to release, use the **Between** limit, then leave the minimum value to 1887 and the maximum value to 2500.

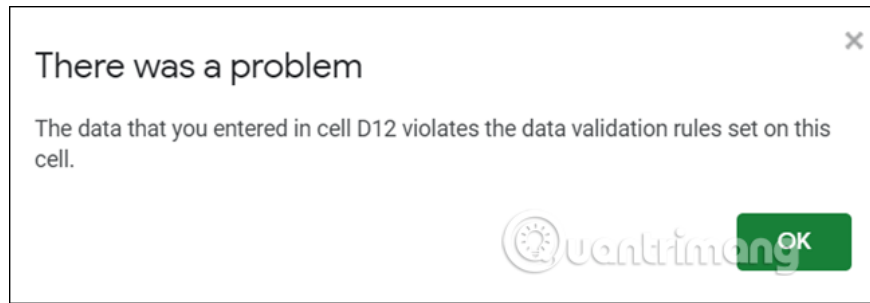


Next, choose between Sheets that show the message or reject the input and display an error message when the data is invalid.

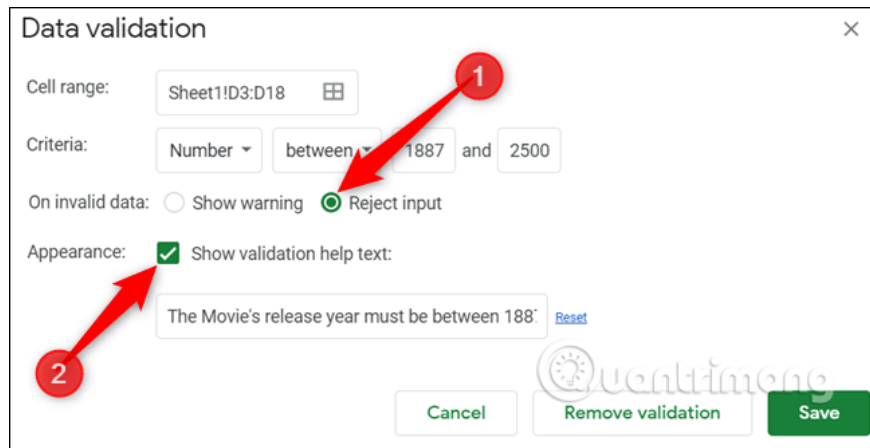
This alert notifies users that the number must be within a specific range and that the data is invalid in the box with the red message.



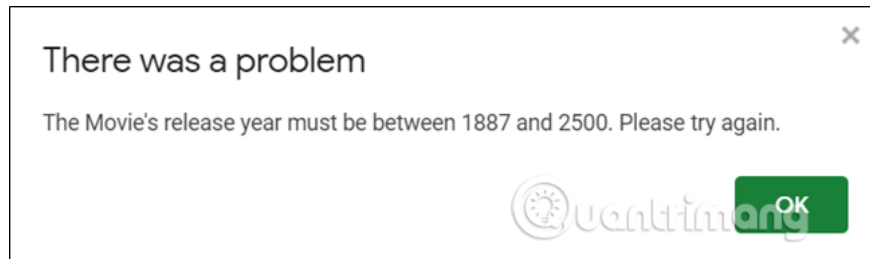
If **Reject Input** is selected, the user will see a window with a general error message as below after invalid data entry and will be deleted.



You may refuse any invalid input but need to notify others of the type of data requested. Click **Reject Input** , select **Show Validation Help Text** and then enter the useful warning content. Click **Save** to close the Data validation window.



Now, when someone enters invalid data, they will receive a useful message to correct the error.



Data validation is an essential feature when collecting information from many people and making sure they enter valid data in the spreadsheet box.

I wish you all success!

You finished reading the article "**How to limit data with Data Validation in Google Sheets**" edited by the [TipsMake](#) team. We hope this article has provided you with many useful tech tips and tricks. You can search for similar articles on tips and guides. Thank you for reading and for following us regularly.