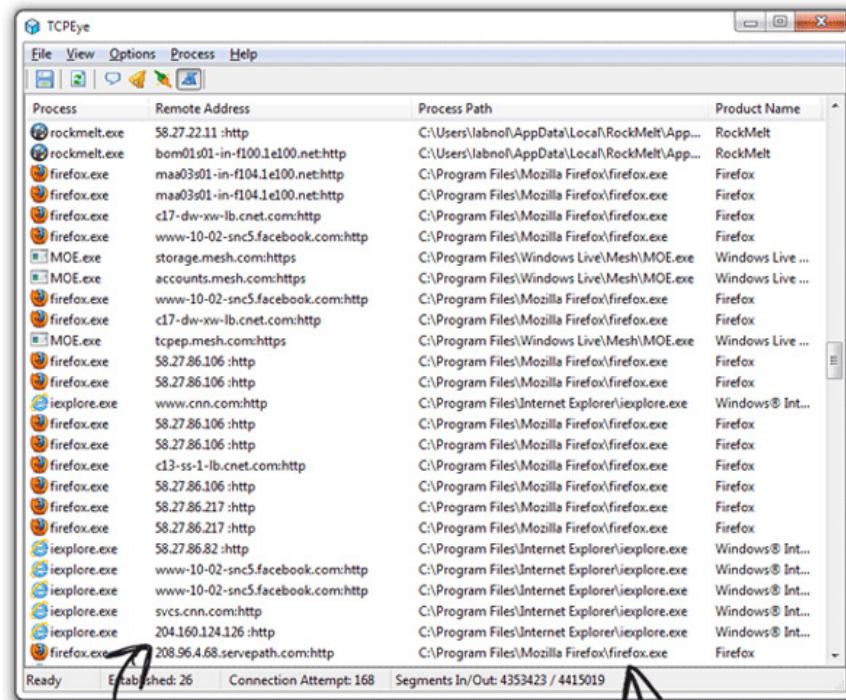


# How to know exactly which programs are accessing the Internet

We use the Internet on a daily basis, work, read newspapers, entertain, chat ... but do you know exactly which programs in the system are directly connected to the Internet?

**We use the Internet on a daily basis, work, read newspapers, entertain, chat . but do you know exactly which programs in the system are directly connected to the Internet ?** In the following article, we will present some basic ways to test this process.



websites that programs are trying to access

program location

If you use Windows Vista or 7, you can use the **Performance** utility ( *Run> perfmon* ) to monitor all activity in the system and the program connecting to the Internet. Or, with other Windows versions, use TCPEye 1.0 - a free, simple and easy-to-use utility program that automatically lists and updates the list of applications that use Internet resources.

The difference of TCPEye is the ability to determine exactly which websites or servers we are accessing, and the geographical location of those servers. Most utilities with the same Explorer function only mention IP addresses. During the operation, if you detect a process that has a different or unreliable behavior, right-click the application's name

and select *End Process*. Good luck!

You finished reading the article "**How to know exactly which programs are accessing the Internet**" edited by the [TipsMake](#) team. We hope this article has provided you with many useful tech tips and tricks. You can search for similar articles on tips and guides. Thank you for reading and for following us regularly.

---