

How to install Word and Excel in Office 2016 only

When you install the Office 2016 suite, you notice that you cannot customize the settings like previous Office suites. All software like Word, Excel, Access, Powerpoint, OneNote, etc. will be installed when you run its setup.exe. This is very convenient for users who want to install all software in Office 2016. However, if your computer's C drive doesn't have much storage space or you just want to install some specific software like Word and Excel are very problematic.

When you install the Office 2016 suite, you notice that you cannot customize the settings like previous Office suites. All software like Word, Excel, Access, Powerpoint, OneNote, etc. will be installed when you run its setup.exe. This is very convenient for users who want to install all software in Office 2016. However, if your computer's C drive doesn't have much storage space or you just want to install some specific software like Word and Excel are very problematic.

To fix the problem, you can use the Office 2016 Deployment Tool to customize the installation of Office 2016. In this article, you will discuss how to use the Office 2016 Deployment Tool and change configuration.xml with any process. any text editor. From there you can customize Office 2016 settings to install the specific software you want.

See the instructions for installing Office 2016 on Youtube

How to install Word 2016, Excel 2016 in detail

The following is a detailed step-by-step guide to help you better understand.

1. Download the Office 2016 Deployment Tool.

Office 2016 Deployment Tool

Language: English [Download](#)

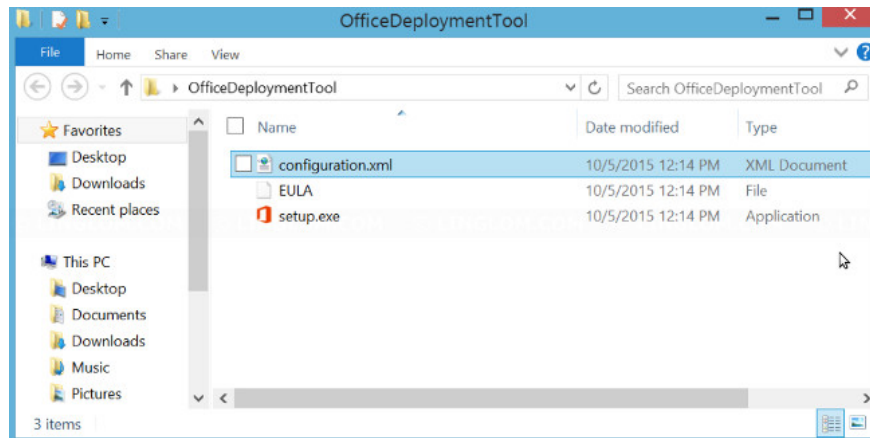
The Office 2016 Deployment Tool allows the administrator to customize and manage Office 2016 Click-to-Run deployments. This tool will help administrators to manage installations sources, product/language combinations, and deployment configuration options for Office Click-to-Run.

[+ Details](#)

[+ System Requirements](#)

[+ Install Instructions](#)

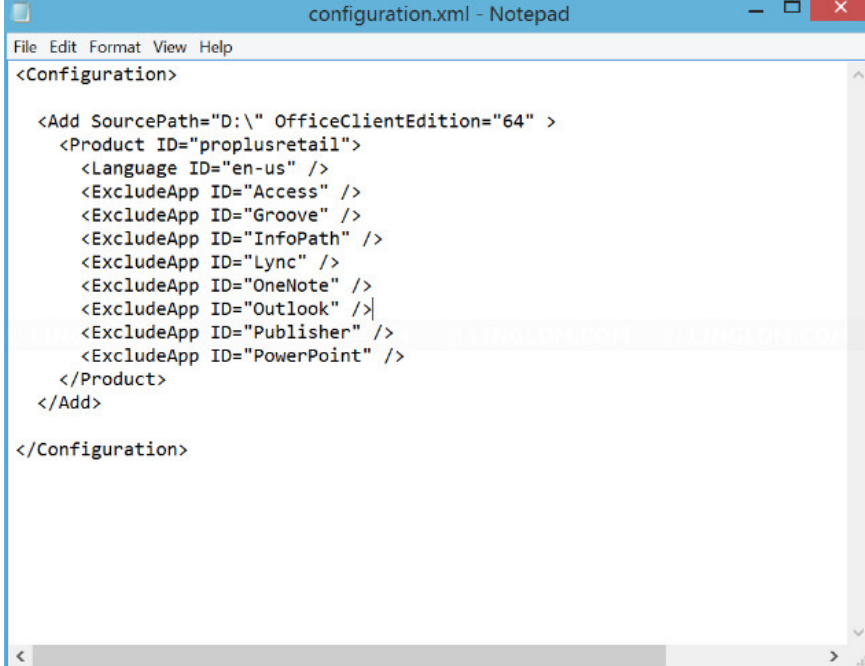
2. You double-click the downloaded file `officedeploymenttool_10321.33602.exe`, select the folder to extract the file. After decompressing, you will see the following files: `configuration.xml`, `EULA` (yes or no), and `setup.exe`.



3. Edit `configuration.xml` with notepad. Here is an example configuration:

And here are some brief explanations of each element.

1. **SourcePath** is the path where you install the Office 2016 suite. In this example, Office 2016 is installed on DVD (drive D).
2. **OfficeClientEdition**. You can choose 32-bit or 64-bit settings.
3. **Product ID**. If you plan to install Office 2016, use **ProPlusRetail**. If you plan to install Office 365 ProPlus, use **O365ProPlusRetail**.
4. **Language ID**, specify the installation language.
5. **ID ExcludeApp**, specify the software in the Office suite that you do not want to install. In this example, install only Word and Excel software.



```
configuration.xml - Notepad
File Edit Format View Help
<Configuration>
  <Add SourcePath="D:\\" OfficeClientEdition="64" >
    <Product ID="proplusretail">
      <Language ID="en-us" />
      <ExcludeApp ID="Access" />
      <ExcludeApp ID="Groove" />
      <ExcludeApp ID="InfoPath" />
      <ExcludeApp ID="Lync" />
      <ExcludeApp ID="OneNote" />
      <ExcludeApp ID="Outlook" />
      <ExcludeApp ID="Publisher" />
      <ExcludeApp ID="PowerPoint" />
    </Product>
  </Add>
</Configuration>
```

4. Open the Command prompt and change the path to the folder you extracted the deployment tool (in step 2). Then, type the command:

setup /configure configuration.xml

```
Command Prompt
Microsoft Windows [Version 6.3.9600]
(c) 2013 Microsoft Corporation. All rights reserved.

C:\Users\linglom>cd Desktop\OfficeDeploymentTool

C:\Users\linglom\Desktop\OfficeDeploymentTool>dir
Volume in drive C has no label.
Volume Serial Number is B2CB-7430

Directory of C:\Users\linglom\Desktop\OfficeDeploymentTool

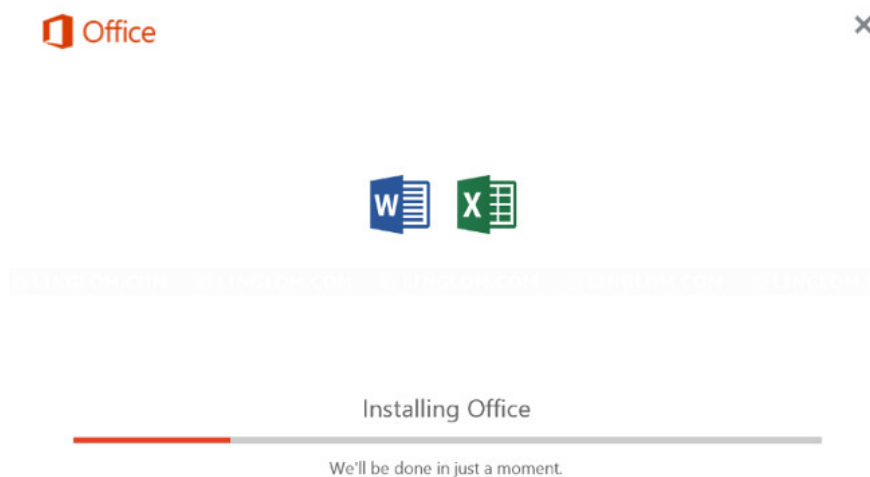
11/27/2015  12:35 PM  <DIR>          .
11/27/2015  12:35 PM  <DIR>          ..
11/27/2015  12:41 PM                462 configuration.xml
10/05/2015  12:14 PM                10,120 EULA
10/05/2015  12:14 PM           2,920,104 setup.exe
               3 File(s)           2,930,686 bytes
               2 Dir(s)    70,542,970,880 bytes free

C:\Users\linglom\Desktop\OfficeDeploymentTool>setup /configure configuration.xml
```

5. In this sample configuration, if there is no error, you will see that only Word and Excel are installed. The results in this example:

Normal installation: 25 minutes, accounting for 2.2 GB of disk space.

Custom settings(Word and Excel): 14 minutes, 1.85 GB of used disk space (20% savings).



The above are instructions for placing Word and Excel in Office 2016 only.

I wish you all success!

See more: [How to install Vietnamese language interface on Microsoft Office 2016](#)

You finished reading the article "**How to install Word and Excel in Office 2016 only**" edited by the [TipsMake](#) team. We hope this article has provided you with many useful tech tips and tricks. You can search for similar articles on tips and guides. Thank you for reading and for following us regularly.
