

How to install Windows on WinPE

Installing Windows in a WinPE environment will limit a lot of errors, the speed of installation is quick, it can be installed even if we cannot access the system.

In the way of installing Windows, install Win in WinPE environment selected by many people. The speed of installing Win in this way is quite fast, does not need as much time as when you install via USB or CD / DVD. Even if users cannot access the system, they can install Windows as usual. In particular, during the computer installation process, there will be less error of installing win, or full disk error of 100% on the system. The following article will guide you how to read how to install Windows on WinPE, which can be applied from Windows 7 to Windows 10.

1. How to fix keyboard and mouse error when Boot USB installs Win
2. Instructions on how to ghost Windows 7 using USB
3. Create partition during Windows 7 installation process

Instructions to install Windows on WinPE

Before installing, we need to create a versatile USB boot. You can refer to the multi-boot boot tool below.

1. Instructions for creating USB boot with Hiren's BootCD quickly
2. How to create USB Boot, USB install Windows by Rufus
3. How to create USB boot, USB rescue by DLC Boot

Prepare the Windows ISO file you want to install. After that, you will find the following way to proceed with installing Windows.

1. How to download Windows 10, download Windows 10 ISO file from Microsoft
2. How to download Windows 7 ISO file

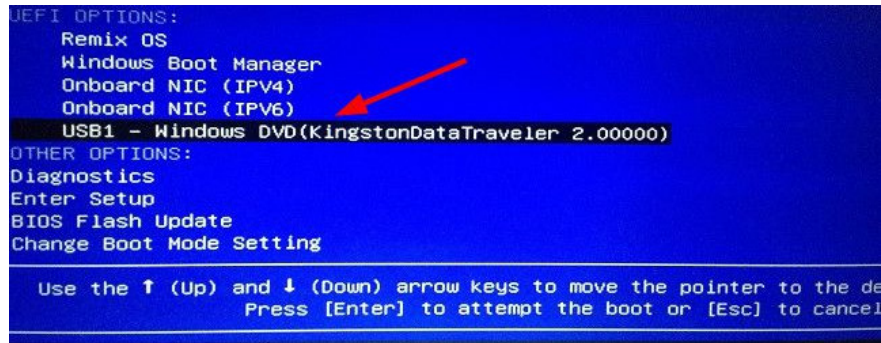
Step 1:

We plug the USB boot into the computer and access the BIOS interface. Depending on the machine, there will be different ways to access BIOS. You can refer to the article below for a shortcut to the BIOS on your computer.

1. Instructions for entering BIOS on different computers

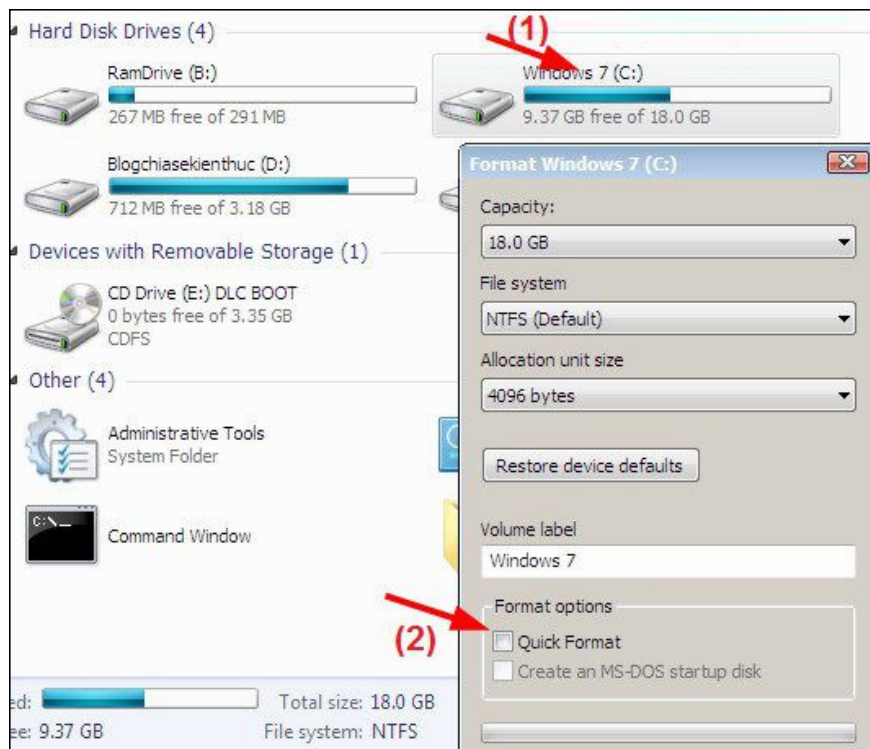
By default accessing the BIOS will boot from the hard drive, but you choose to boot from the boot USB to proceed.

1. How to set up BIOS to boot from USB / CD / DVD, external hard drive



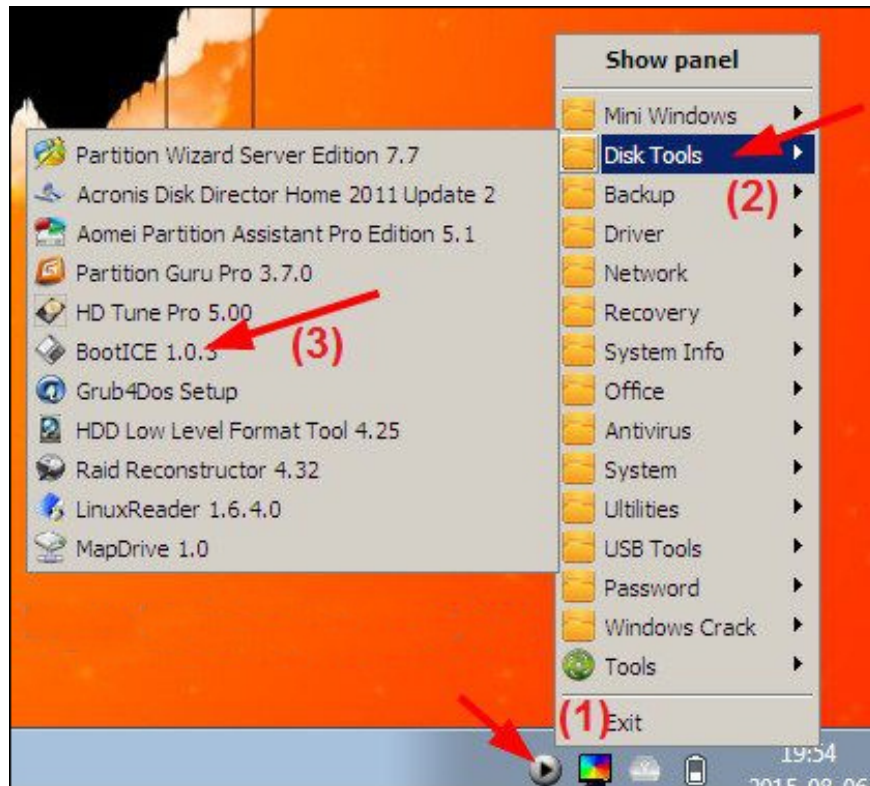
Step 2:

Access the hard drive on your computer and then proceed to **Format the hard drive to install Windows** . In the **File Type** section, select **NTFS** , uncheck the box at **Quick Format**.



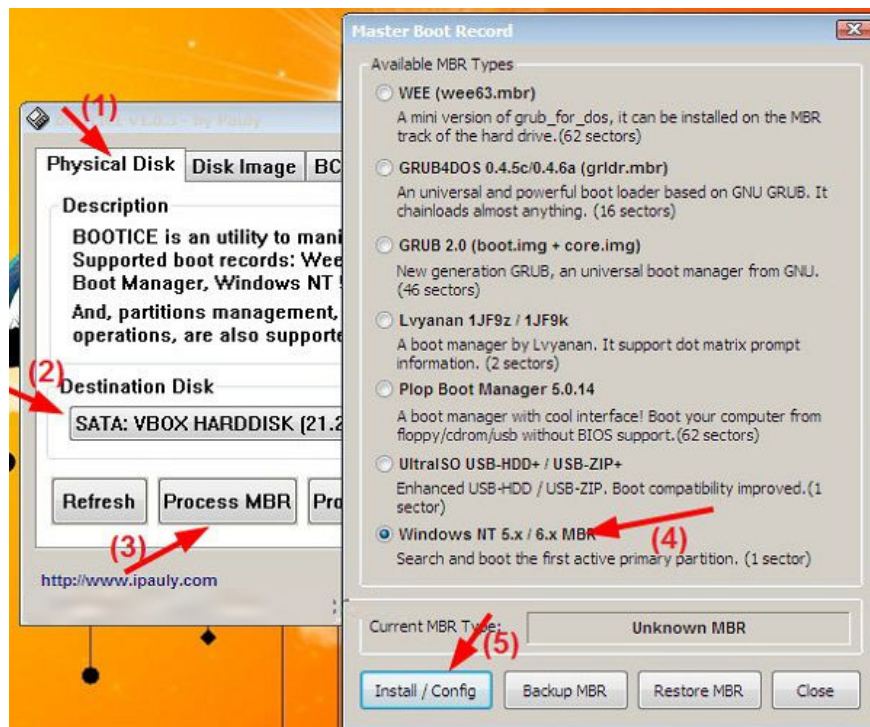
Step 3:

Click on the **DLC Boot icon** and select **Disk Tools** then select the **BootICE** tool.



Step 4:

Next, load MBR, PBR to the partition of the installed hard drive above. Click **Physical Disk** then click on the partition to install, click on **Process MBR** and select **Windows NT 5.x / 6.x MBR** . Finally press **Install / Config** to proceed.

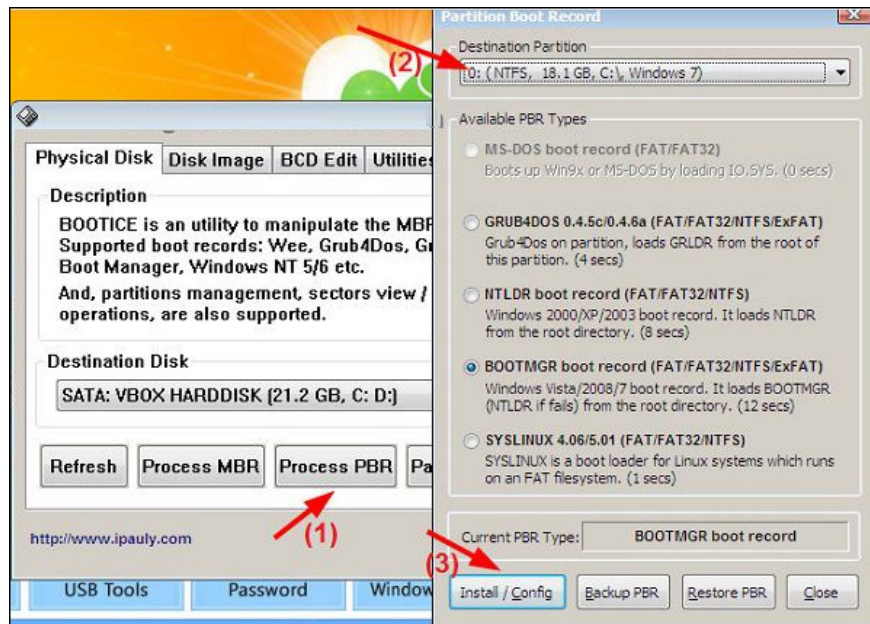


Here we will choose the latest version of **Windows NT 6.X MBR** to use.



Step 5:

Switch to the new interface and click **Process PBR** , select the hard drive partition to install, **Install / Config** and click OK to install.

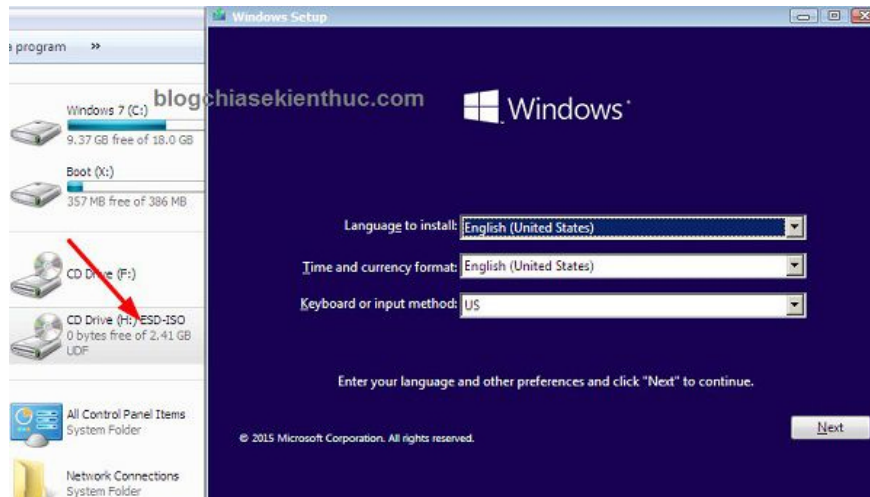


Step 6:

In this step, users will have 2 ways to do that: mount the drive to install directly from the exe file or use WinNTsetup included in the USB BOOT.

Method 1: Install directly from the file

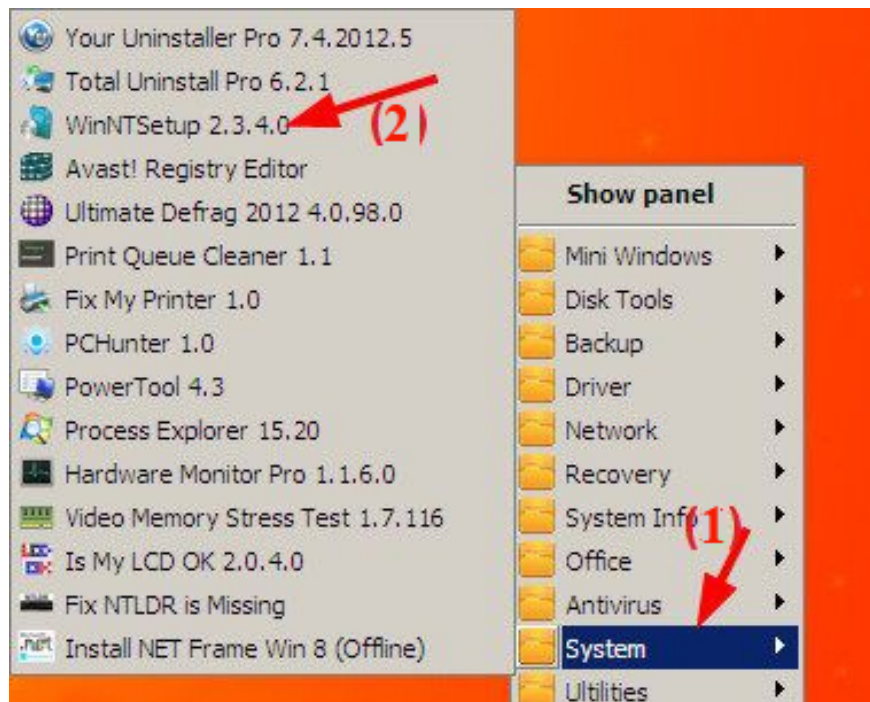
We right-click on the ISO file and select **Mount as ImDisk Virtual Disk** . A virtual drive containing the Win installer will appear. Then proceed to install Windows as usual.



Method 2: Use WinNTsetup to install Win

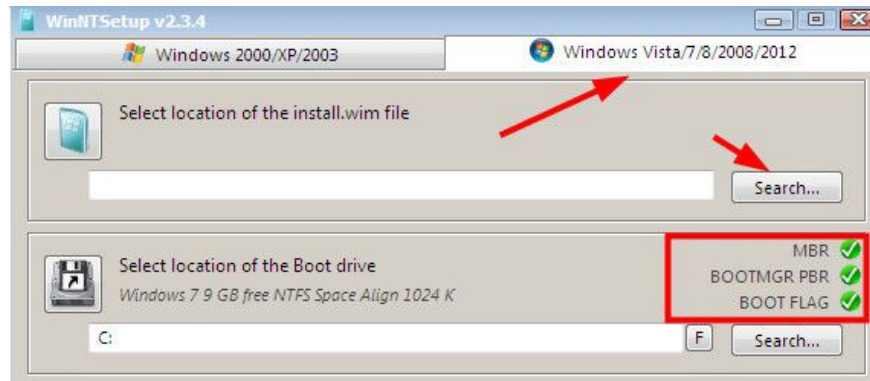
Step 1:

First, users also need to right-click on the ISO file and select **Mount as ImDisk Virtual Disk** . Next click on the **DLC BOOT** icon and select **System** . In the list click on the software **WinNTSetup** .



Step 2:

The WinNTsetup interface appears and select **Windows Vista / 7/8/2008/2012** if Windows 7 or later is installed. In the **Select location of the install.wim section**, click the **Search** button to find the install.win file or the install.esd file at the virtual drive.



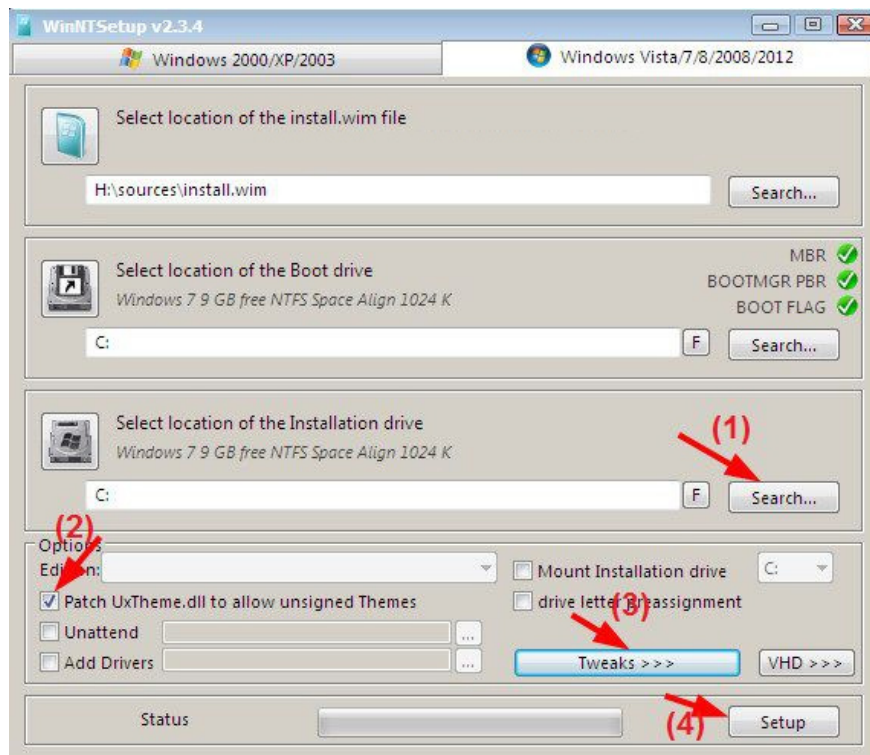
Step 3:

After selecting the file at the interface below the **Select location of the installation driver** click on the **Search** button to select the partition to install the win.

Then check the option **Patch UxTheme.dll to allow unsigned Themes** . Click on the **Tweaks** button to make the option advanced if you want, or you can skip it. Click **Setup** to proceed with the installation process.

If the message appears, ask the user to select a boot mode with BootICE or BootSect with newer WinNTsetup versions, select BootICE mode.

Finally wait for the installation of Windows to complete.



See more:

1. How to get the main ISO file from Microsoft
2. Instructions to create USB installation, boot Windows with Windows 7 USB Download Tool

3. 3 simple ways to reset BIOS settings

I wish you all success!

You finished reading the article "**How to install Windows on WinPE**" edited by the [TipsMake](#) team. We hope this article has provided you with many useful tech tips and tricks. You can search for similar articles on tips and guides. Thank you for reading and for following us regularly.
