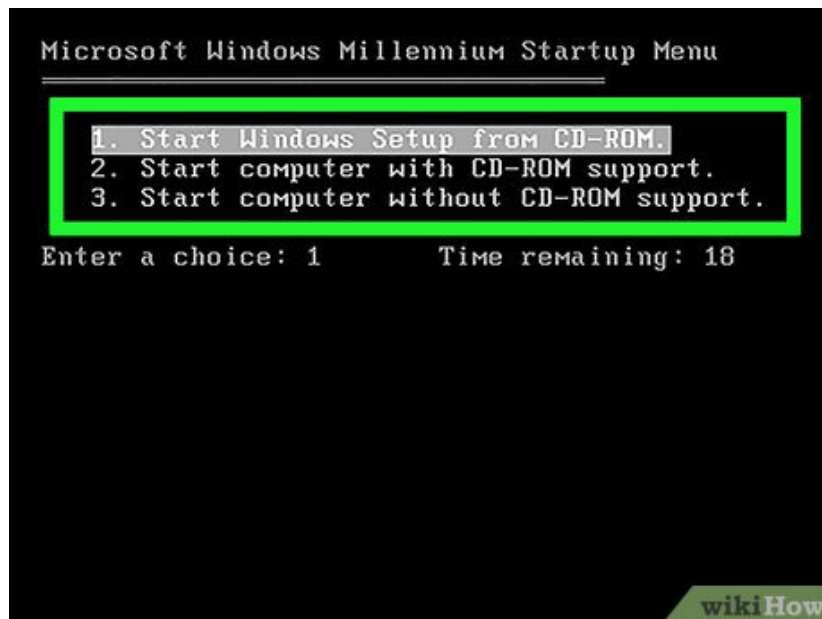


How to Install Windows ME

Windows Millennium Edition (ME) is a closed source operating system that Microsoft released 14th September 2000 which preceded Windows 98 SE, and was succeeded by Windows XP. It was mainly aimed at home usage but a business (and more...

Part 1 of 3:

Before Beginning Installation



1.

Insert the Windows ME installation disk and then boot the computer.

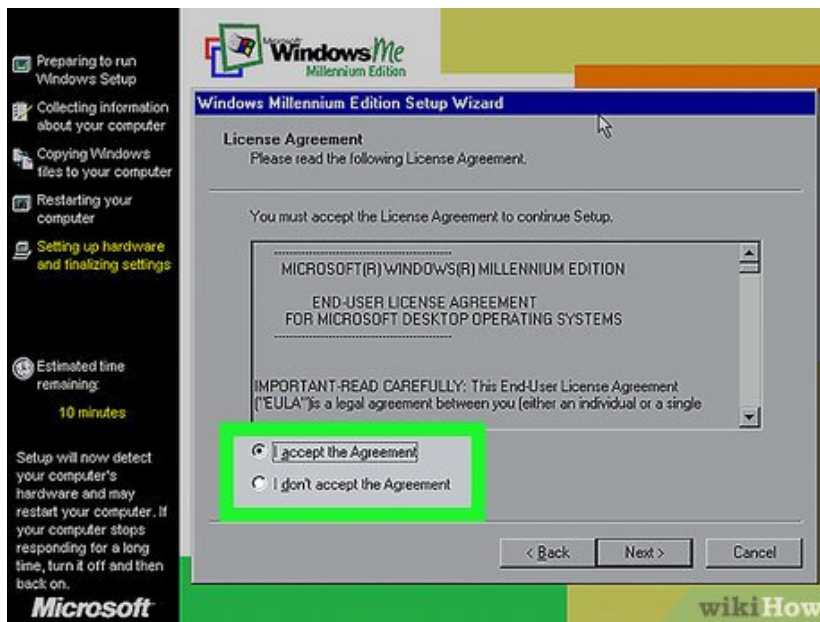
Part 2 of 3:

Installation



1.

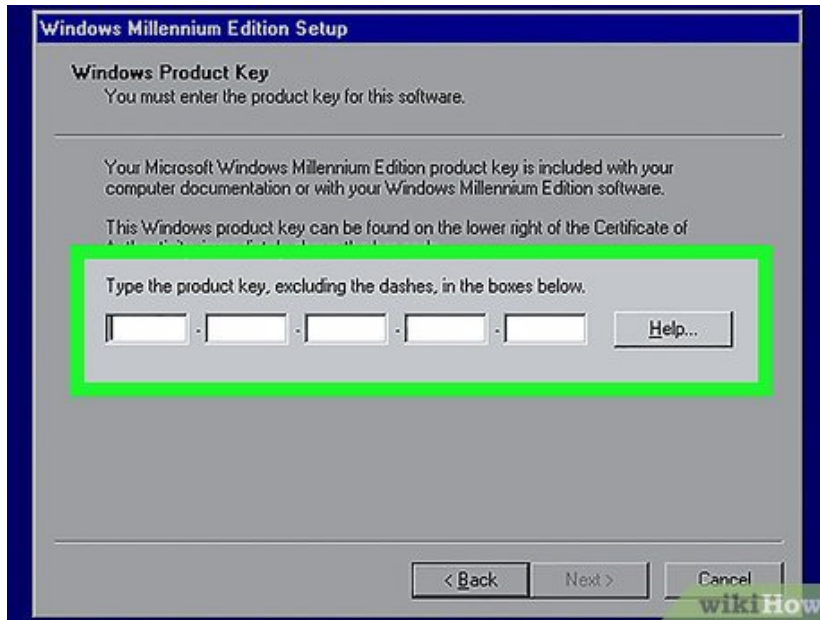
Click **Next**.



2.

Accept the license agreement and click **Next**.

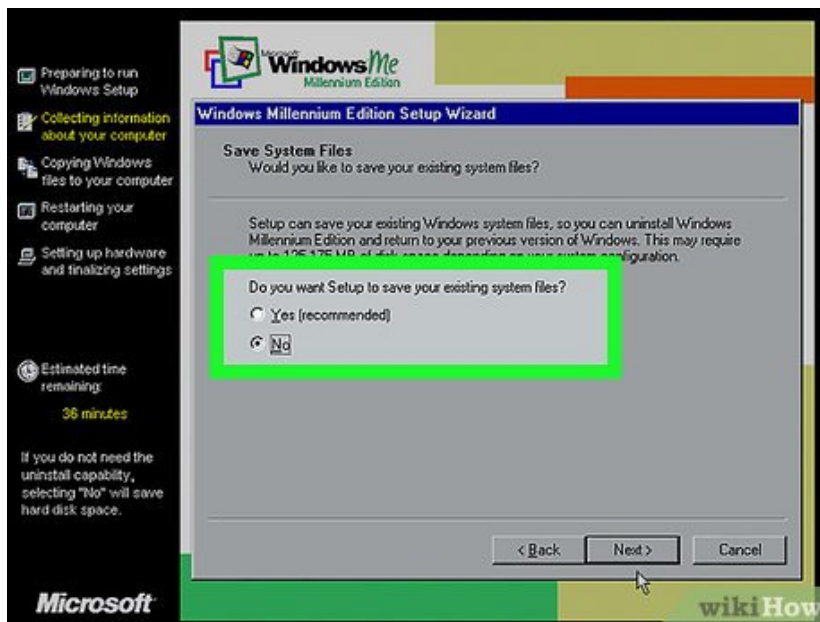
1. It's a good idea to read the agreement so you know what you're agreeing to.



3.

Enter your product key and click **Next.**

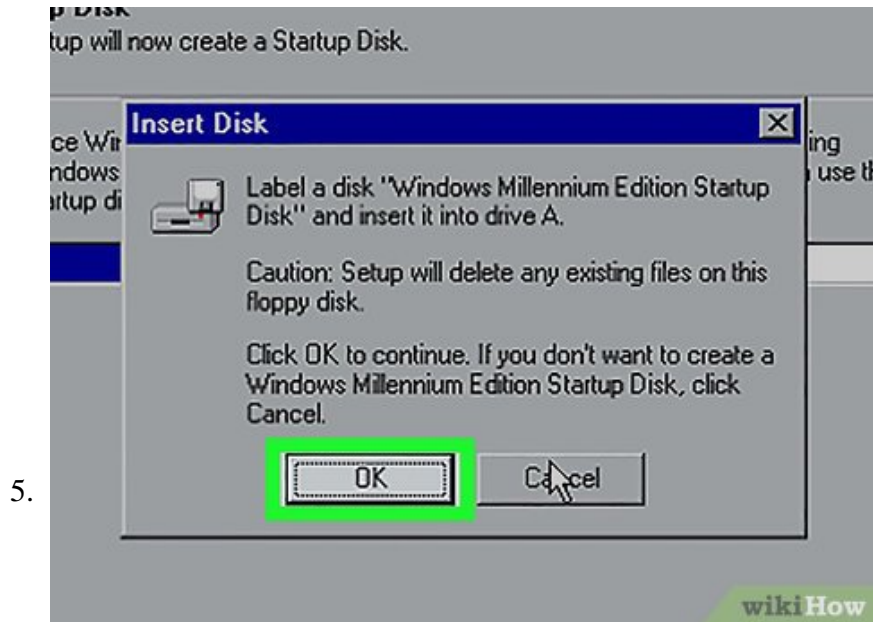
1. This is a 25 digit key which should have come with the Windows ME installation disk.



4.

Select "no". It all comes down to personal preference, but in this tutorial, "no" was selected, followed by click **Next**.

1. If you have upgraded from a previous version of Windows, this message is asking whether you would like to keep the operating system you are upgrading from, so that if you don't like Windows ME, you are able to revert back to an older version of Windows.



Insert the *Start Up* disk. The start up disk is there so that in the event Windows ME cannot boot, the computer will look for the start up disk and can boot Windows normally.

1. This is all down to personal preference but **Cancel** was selected for this tutorial.

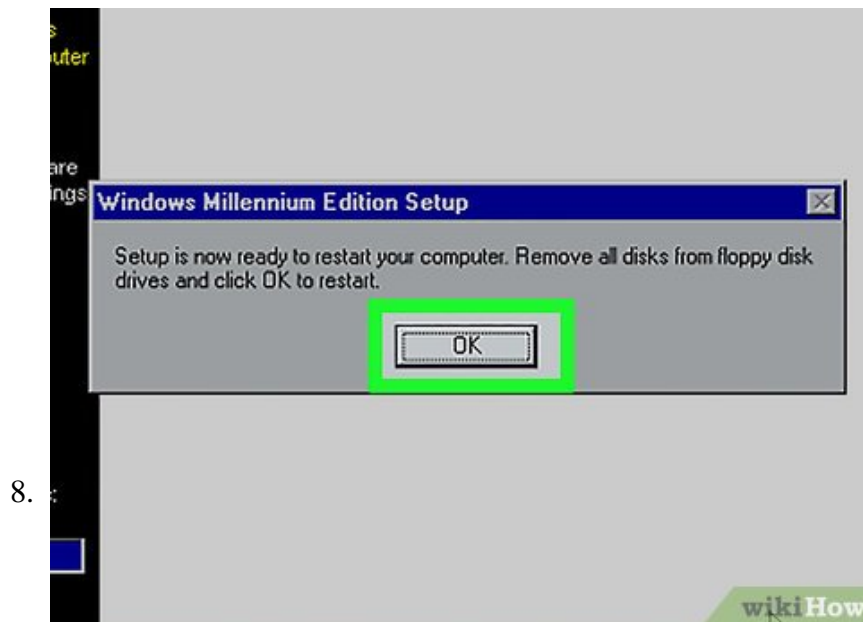


Ignore this message (unless you put a blank floppy disk in the drive) and click **OK.**

1. It is referring to the blank floppy disk that it wanted in the previous step not the Windows ME installation disk. Leave this in!



Click **Finish**.



Ignore this message (unless you put a blank floppy disk in the drive) and click **OK**.

1. This is not referring to the Windows ME installation disk so leave that alone.



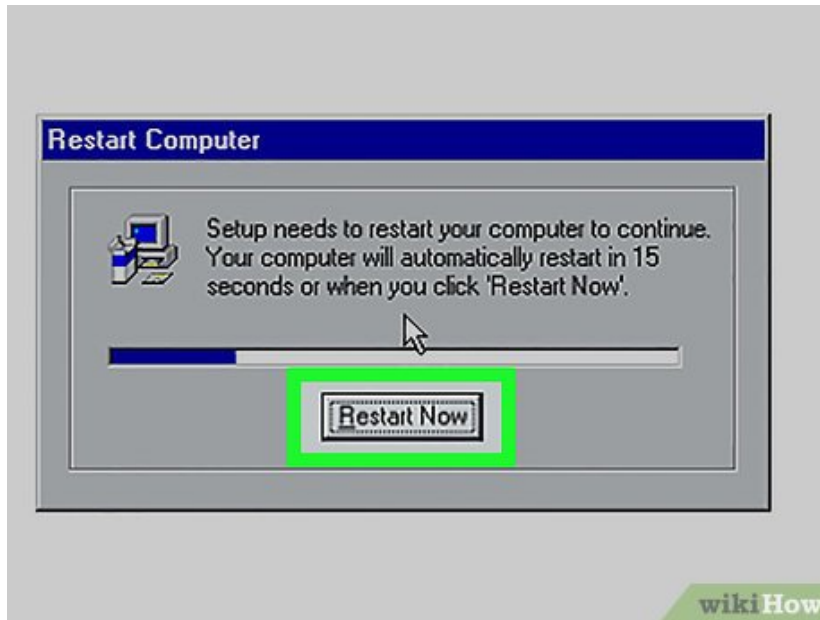
Restart the computer.



Fix a frozen screen. Should the computer freeze here, restart it.

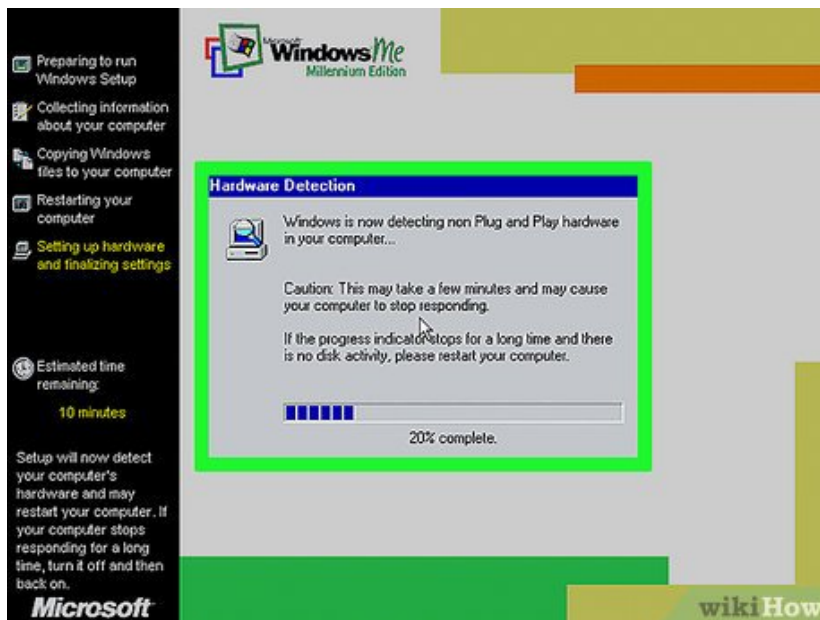
1. This message should come up automatically and restarting your computer (should it freeze) will not harm anything.

11.



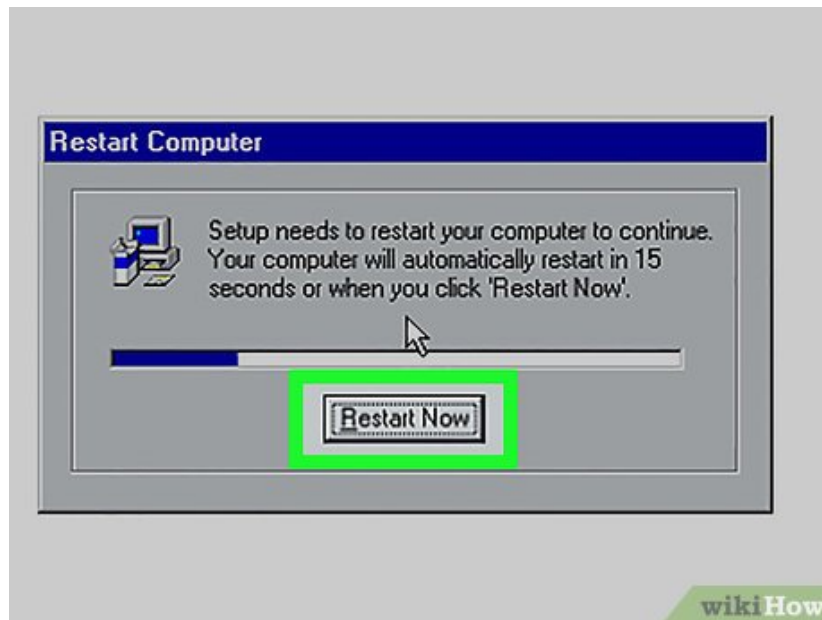
Restart your computer.

12.



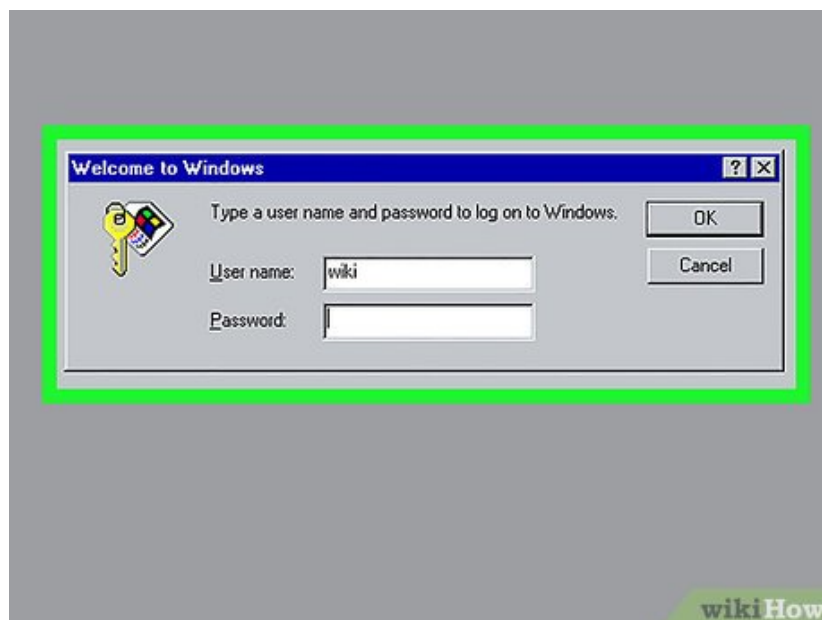
Continue the installation. At this point, Windows ME will not require any further input from the user until it next asks you to restart the computer.

13.



Restart your computer.

14.



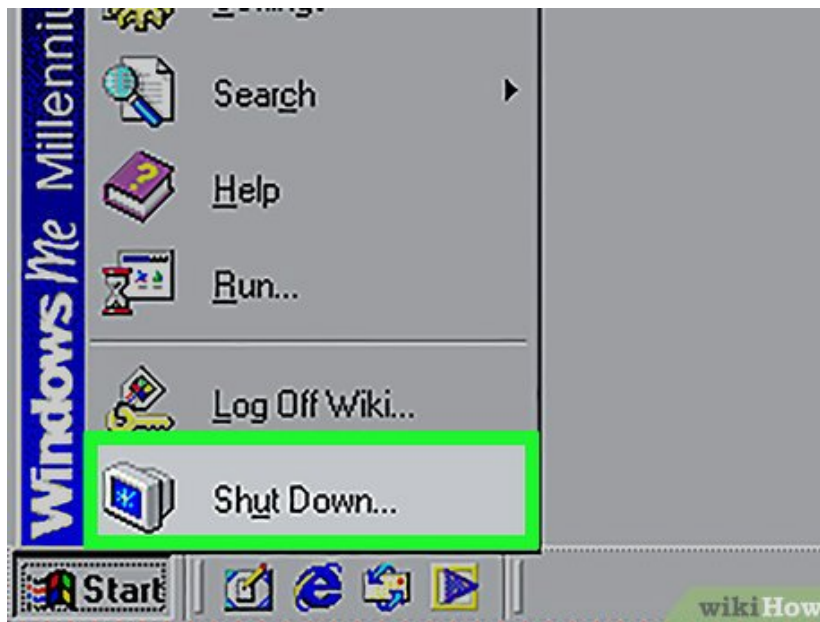
Type in your username (and password if you have allocated one) and click **OK.**

Part 3 of 3:

Switching Off



Click **Start**.



Click **Shutdown**.



Make sure "Shutdown" is selected from the drop down menu and then click **OK**.

You finished reading the article "**How to Install Windows ME**" edited by the [TipsMake](#) team. We hope this article has provided you with many useful tech tips and tricks. You can search for similar articles on tips and guides. Thank you for reading and for following us regularly.
