

# How to install Webcam for computer

How to install Webcam for computer

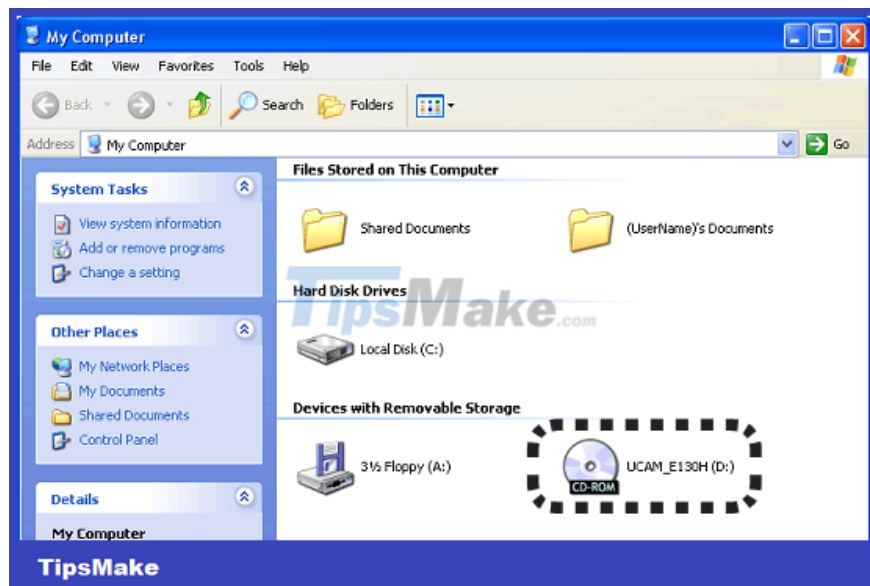
Webcam is a device connected to a computer used to record video, this video signal will be processed and stored on a computer or transmitted to another computer through programs connected to the Internet. Webcam is widely used not only in work such as: Conversation, online conferencing, monitoring, . but also for entertainment, live broadcast of family and friends gatherings.

Before attaching the Webcam to the computer, users should carefully read the instructions in the accompanying book to ensure successful installation. In some cases, installation without following the instructions may cause the operating system to fail, resulting in the failure to install the Webcam. It is best before installing any device on the computer, the user should back up the entire system so that it can be restored when there is a problem.

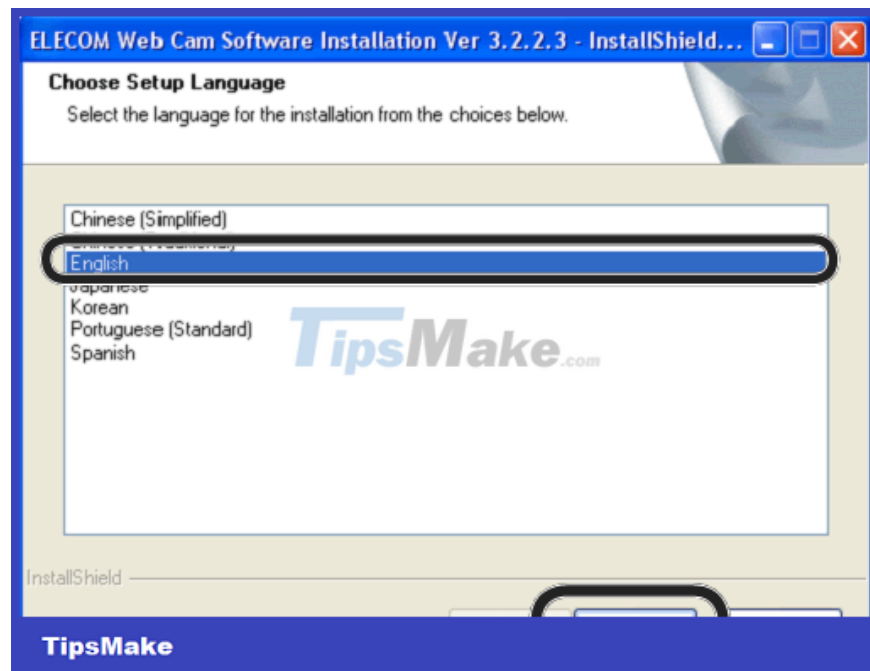
Each Webcam can have its own installation method, but usually it is necessary to install the driver program (Driver) first and then plug the Webcam into the machine. Some Webcams will fail to install if plugged into a computer before installing the driver program, if this error is mild, just unplug the Webcam from the computer and reinstall it normally, in some cases. can only be fixed by reinstalling the Operating System (Windows).

## Webcam installation steps

Start the computer, insert the Webcam Driver CD into the CD (DVD) drive. The installation program will run automatically, if the program does not run automatically, you can access the CD drive and run the installation file by double clicking on the **setup.exe** file .

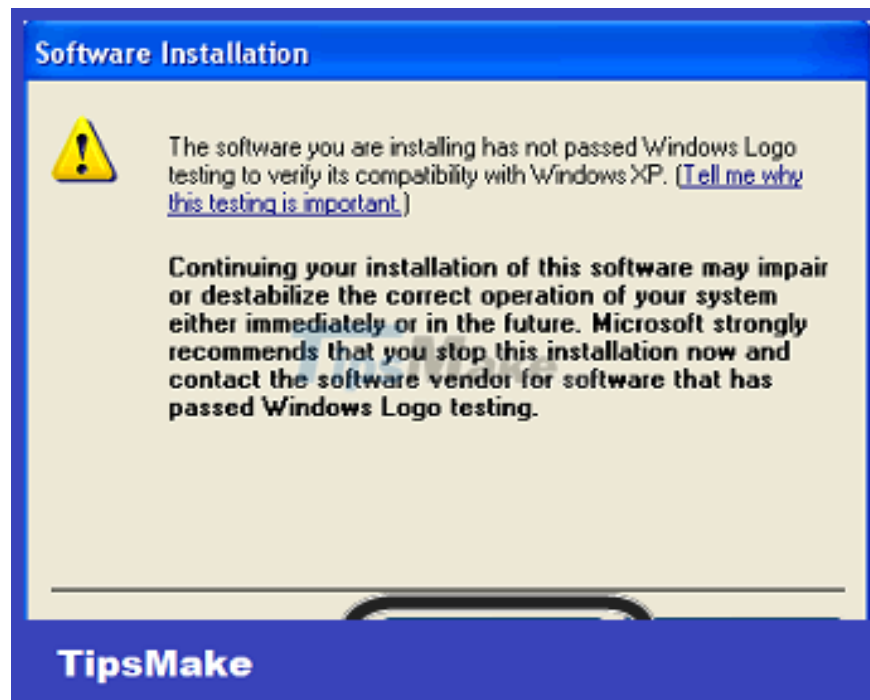


access the CD drive and run the installation file by double clicking on the setup.exe file  
Select the English language (or another arbitrary language) and click **Next** , accept the default settings and continue to click **Next** .



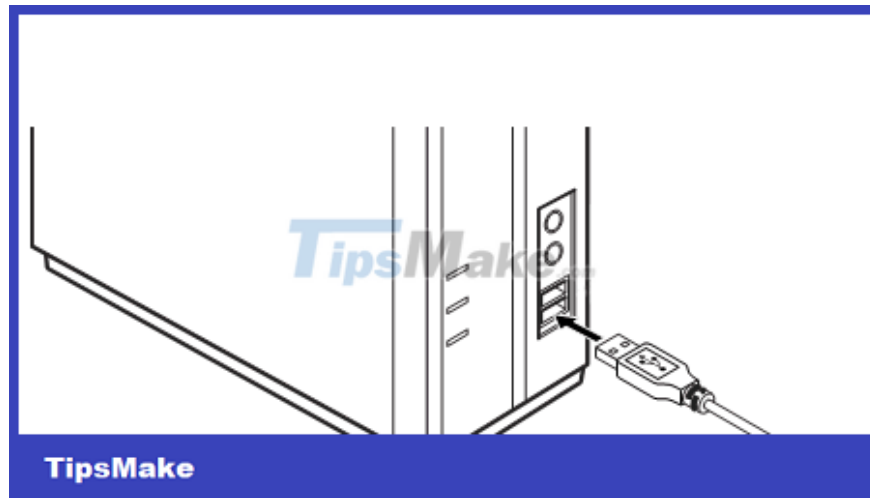
Select installation language

1. If the Windows warning panel appears, click **Continue Anyway** to continue and finally click **Finish** to complete the installation of the Webcam driver program on the machine.



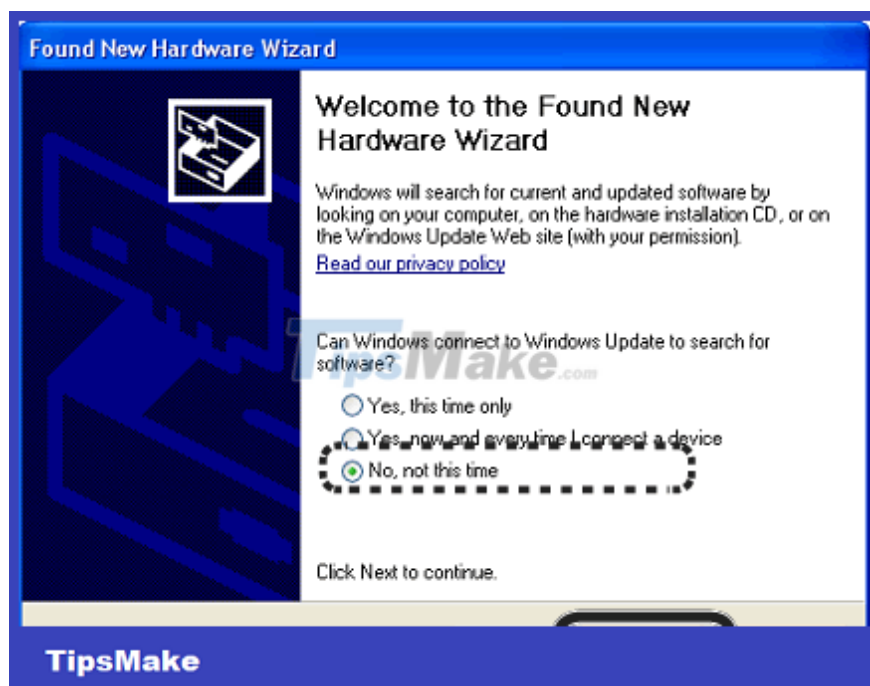
Click Continue Anyway to continue the installation

Plug the Webcam's cord into the USB port located on the back of the computer case (or the front if desired). Note that the Webcam can be plugged in or unplugged regardless of whether the computer is on or off. Some programs during installation may require a Webcam to be plugged into the machine.



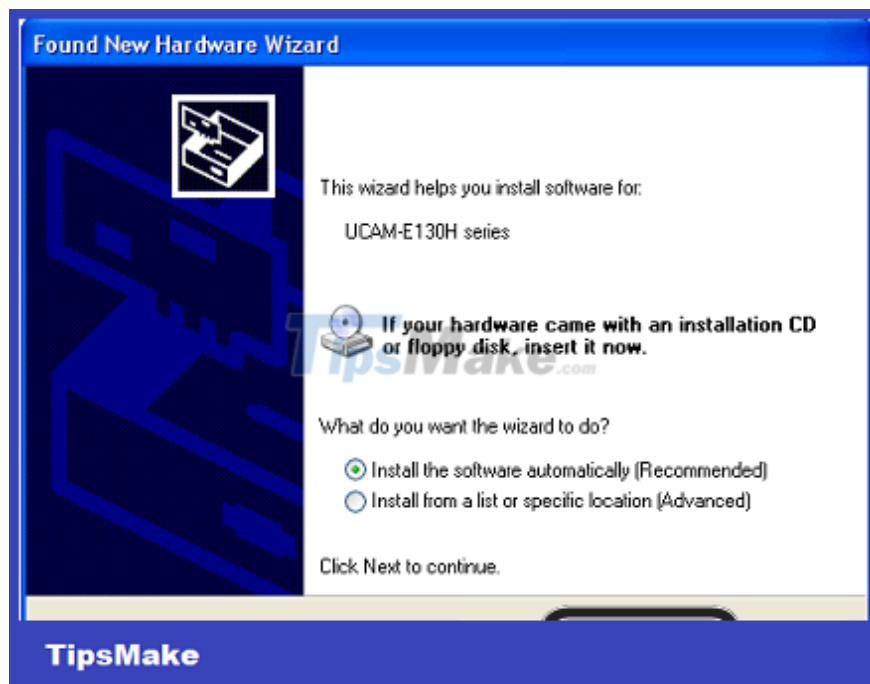
Plug the Webcam's cord into the USB port

1. **If the Found New Hardware Wizard** panel appears as shown in the figure, select **No, not this time** and click **Next** .



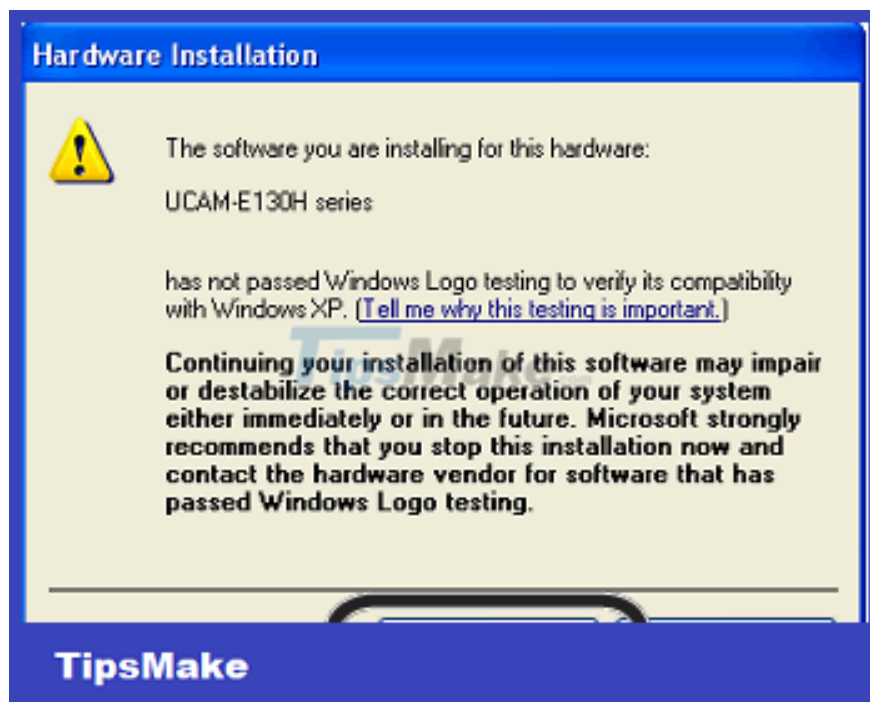
Found New Hardware Wizard

Continue to select **Install the software automatically** as shown in the image below and click **Next** .



## Found New Hardware Wizard

1. If a Windows warning panel appears, click **Continue Anyway** to continue.



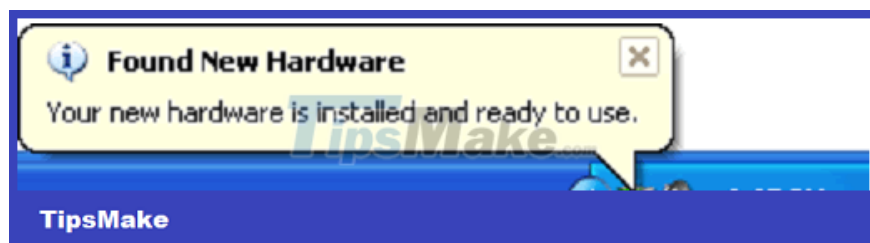
Click Continue Anyway

Finally click **Finish** to complete the installation.



Click Finish to complete the installation

1. Windows will notify you to detect a new device and update the device, please wait a few minutes for Windows to update the Driver for Webcam.



And now the Webcam installation is complete, you can run the Webcam control program by double-clicking on its icon (Icon) located on the Desktop or accessing Start Menu -> All Program -> **Webcam** 's **name** .

Webcam after being installed will become a part of the computer, most programs with video display function (movie processing program, Yahoo! Messenger, Skype,.) can be activated. and use tWebcam from its Menus.

1. The front of the Webcam has a ring to adjust the clarity of the image, adjust it by turning it back and forth so that the image is clear.
2. Above the Webcam, there is usually a button to take a photo, after taking a picture, it will be automatically saved to the folder of the Webcam program.
3. Some Webcams have a built-in Microphone to talk, if you want to use it, you must plug the microphone cord into the Mic jack (pink) on the computer.
4. There are Webcams with additional lights, these lights will automatically light up when used in low light.
5. Do not touch the Webcam's lens with your hands, if the lens is blurred or dirty, you can use a soft cloth to wipe it.



webcam\_multi

You finished reading the article "**How to install Webcam for computer**" edited by the [TipsMake](#) team. We hope this article has provided you with many useful tech tips and tricks. You can search for similar articles on tips and guides. Thank you for reading and for following us regularly.