

How to install Ubuntu operating system in parallel with Windows 10

How to install Ubuntu operating system in parallel with Windows 10. To install Ubuntu in parallel with Windows 10 we need to create a new hard drive partition to hold the Ubuntu operating system. New partition magazine as follows: Step 1: Right-click on the icon ThisPC and select Ma

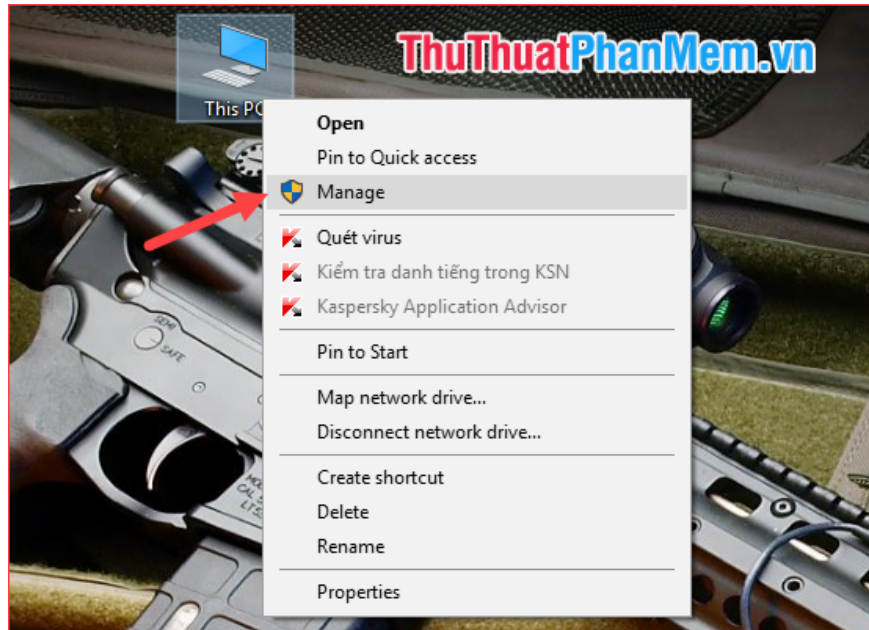
Ubuntu is a computer operating system based on Debian GNU / Linux, a popular Linux distribution. The purpose of Ubuntu includes providing a stable operating system, updating it for ordinary users, and focusing on usability and ease of installation. In addition, Ubuntu is free and open source software, which means users are free to run, copy, distribute, research, change and improve the software. This is why IT people or software developers often use this operating system. If you are bored with the Windows operating system or simply want to try out a new operating system, you can install Ubuntu in parallel with Windows. In this article, TipsMake.com will guide you the basic steps to install Ubuntu operating system in parallel with Windows 10. Invite you to follow.



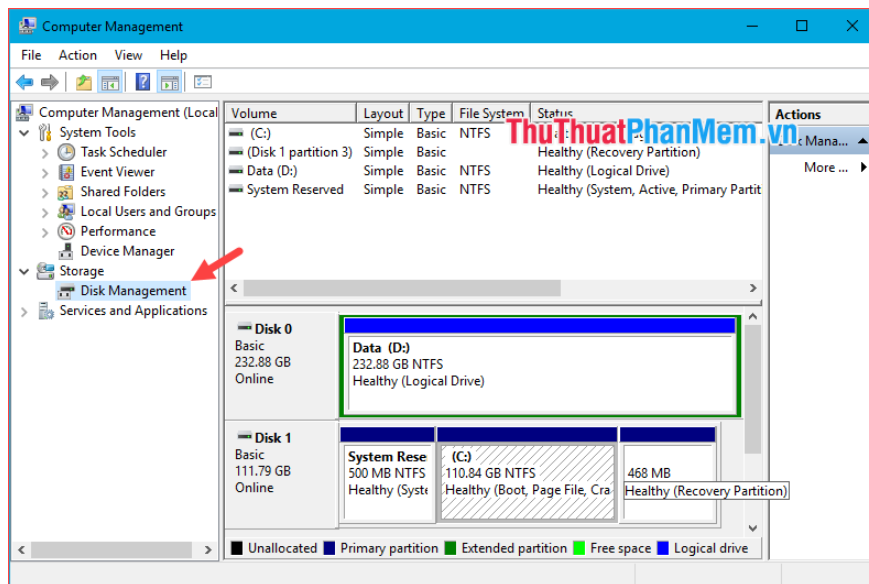
1. Create a blank partition to install Ubuntu

To install Ubuntu in parallel with Windows 10 we need to create a new hard drive partition to accommodate Ubuntu. New partition subscriptions are as follows:

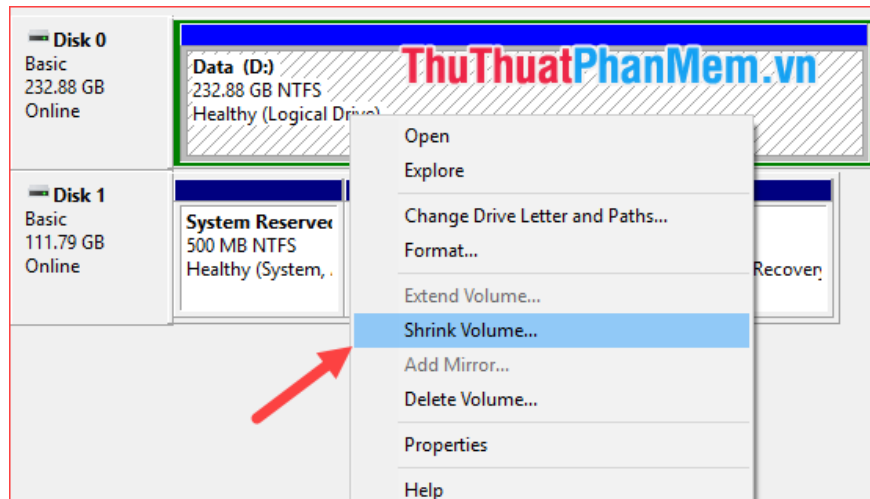
Step 1 : Right-click the ThisPC icon and select **Manage**



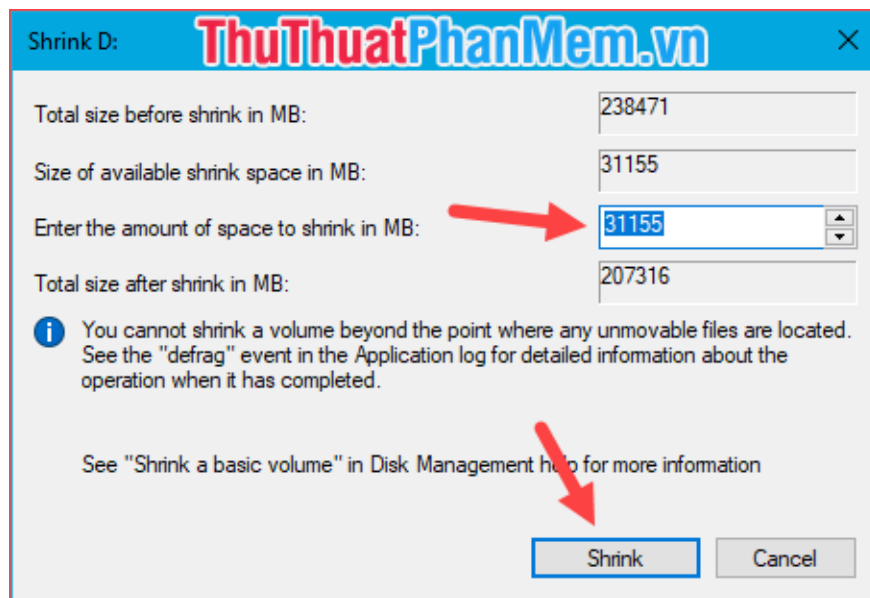
Step 2: In the new window select **Disk Management** and you will see your hard drives are displayed as Disk 0, Disk 1 as shown below, if your computer has only 1 hard drive, it will show only show Disk 0.



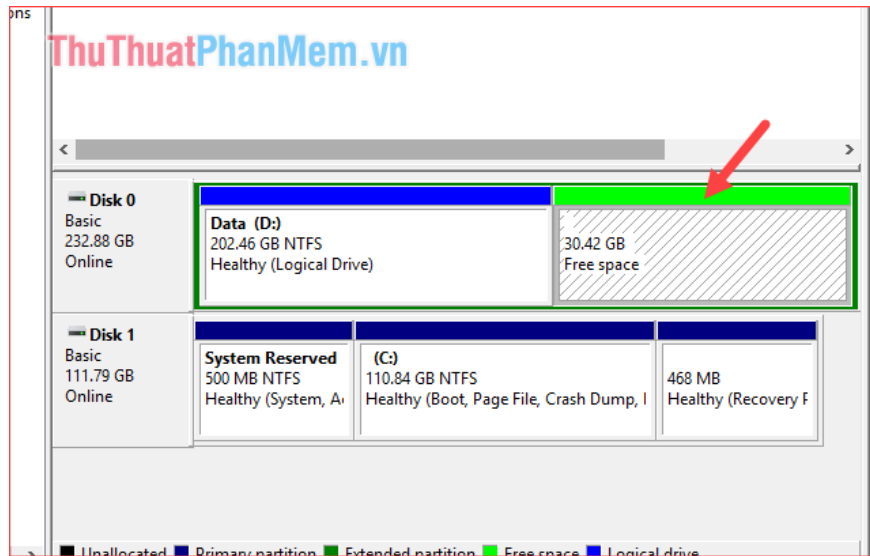
Step 3 : To create a new free partition, right click on the hard drive and select **Shrink Volume** .



Step 4 : A new window appears, enter the partition capacity you want to split, the number available is the maximum capacity you can split, then click **Shrink**



Wait a moment and windows will create us a new partition called Free space and we will proceed to install Ubuntu on this partition.



2. Prepare before installing Ubuntu

Similar to when installing windows, to install Ubuntu we need to have the Ubuntu installer ISO file and a 4Gb USB or higher.

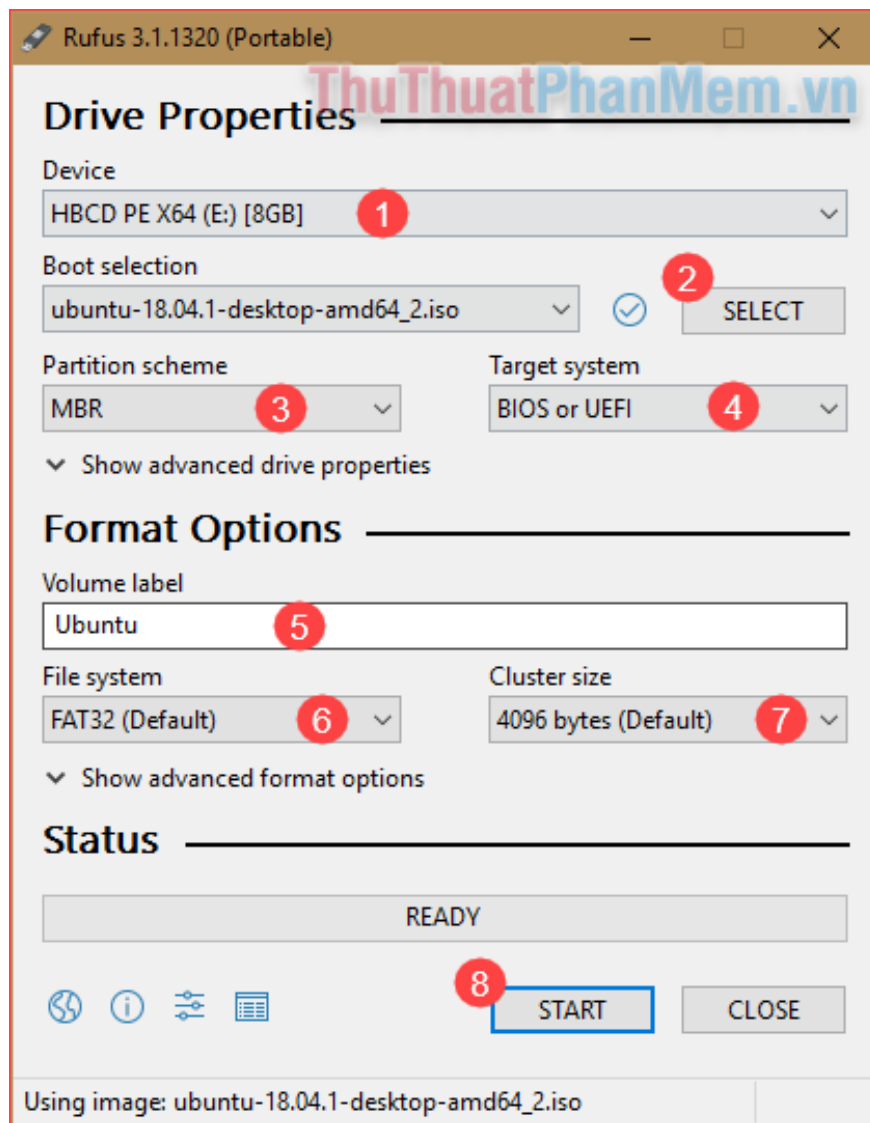
- Link to download ISO Ubuntu: <https://www.ubuntu.com/download>

- Rufus software creates USB boot: <https://rufus.akeo.ie>

How to create Ubuntu bootable USB as follows:

You plug the USB into the computer, then open the software Rufus and do the following steps:

- 1 - Select the USB that you connect to the computer to create Boot.
- 2 - Select the Ubuntu ISO file that you have prepared.
- 3, 4 - You default to the picture.
- 5 - Name the USB.
- 6 - Choose the default FAT32, if the ISO file is larger than 4GB, select NTFS.
- 7 - Select the default as shown.
- 8 - Click Start to start creating USB boot.



After clicking Start if a message appears, click Yes and OK.

3. Steps to install Ubuntu

Step 1 : You plug the USB boot created above into the computer and then restart. During the reboot process, choose BIOS and select boot from USB or CD.

List of BIOS access keys by mainboard:

- **ASRock mainboard** - Press the **F2** key
- **ASUS Mainboard** - Press **DEL, Print** or **F10** key .
- **GIGABYTE Mainboard** - Press the **Del** key to enter the BIOS Setup Utility.
- **Intel Mainboard** - Press **F2** to enter BIOS Setup Utility.
- **MSI (Micro-Star) Mainboard** - Press the **DEL** key to enter the BIOS Setup Utility.

List of BIOS access keys by model:

Laptop SONY VAIO

- To get into the BIOS when restarting the computer you need to press the **Vaio Assist** key

Laptop HP - COMPAQ

- On some HP models, you will need to press **F10** to enter the BIOS.
- To get into BOOT when restarting the computer you need to press and hold the **F9** key

ACER Laptop

- To get into BOOT when restarting the computer you need to press and hold the **F12** key
- To get into the BIOS when restarting the computer you need to press and hold the **F2** key .

ASUS laptop

- To get into the BIOS when restarting the computer you need to press and hold the **F2** key
- To get into BOOT when restarting the computer you need to press and hold the **ESC** key

LENOVO THINKPAD Laptop

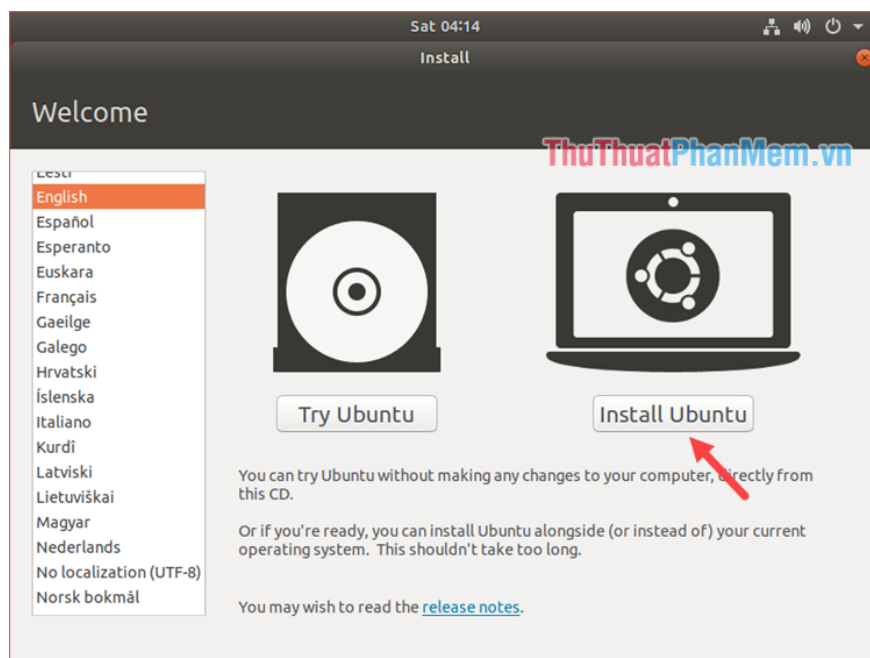
- To get into the BIOS when restarting the computer you need to press and hold the **F2** key
- To get into BOOT when restarting the computer you need to press and hold the **F12** key

DELL Laptop

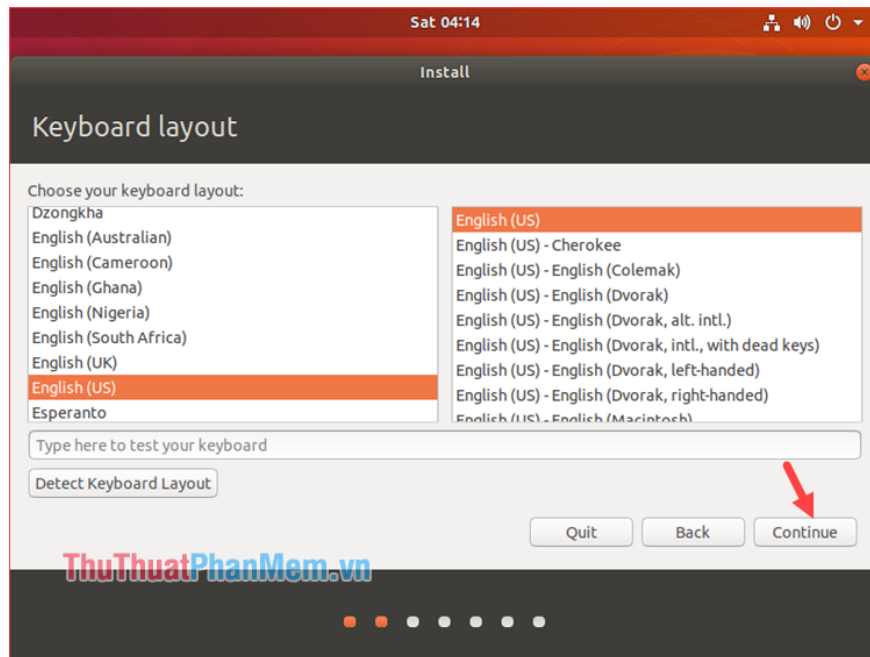
- To get into the BIOS when restarting the computer you need to press and hold the **F2** key
- To get into BOOT when restarting the computer you need to press and hold the **F12** key

Step 2 : After booting into USB, we will see the Ubuntu installation interface as shown below:

Here you have 2 options: Try Ubuntu (trial) and Install Ubuntu (install). We will choose Install Ubuntu to install.



Step 3 : We choose the keyboard language for Ubuntu then click **Continue** .

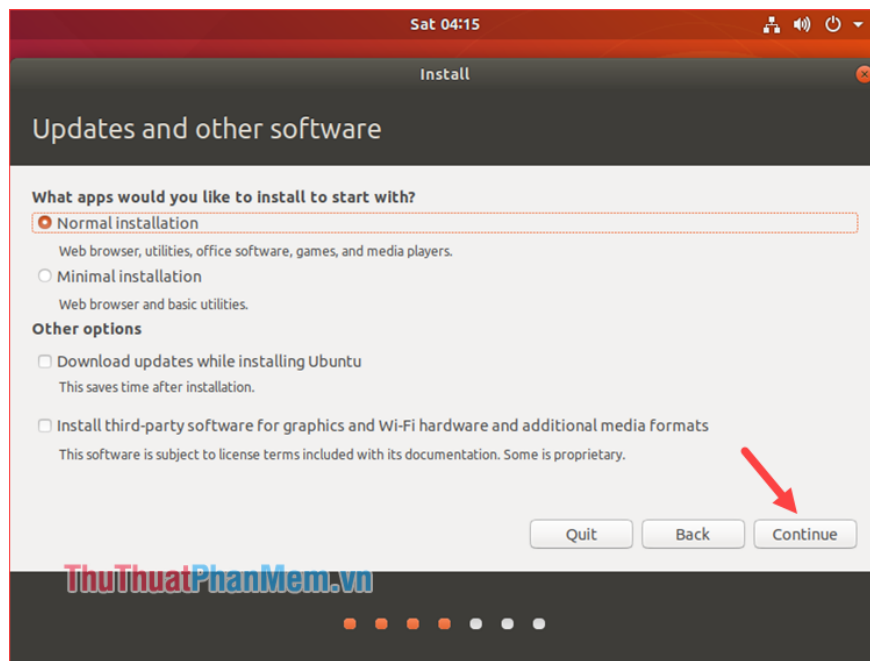


Step 4 : You can choose either of the following options:

- **Normal installation** : **Normal installation** with full software such as: web browser, utilities, office, games, and media player.
- **Minimal installation** : shortened installation includes only browser and utilities.

If you want to install quickly, select Minimal, if you want to fully, then select Normal.

Also, the two options under **Other options** are installing updates and third party software, so you can **uncheck** to save time during the Ubuntu installation process.

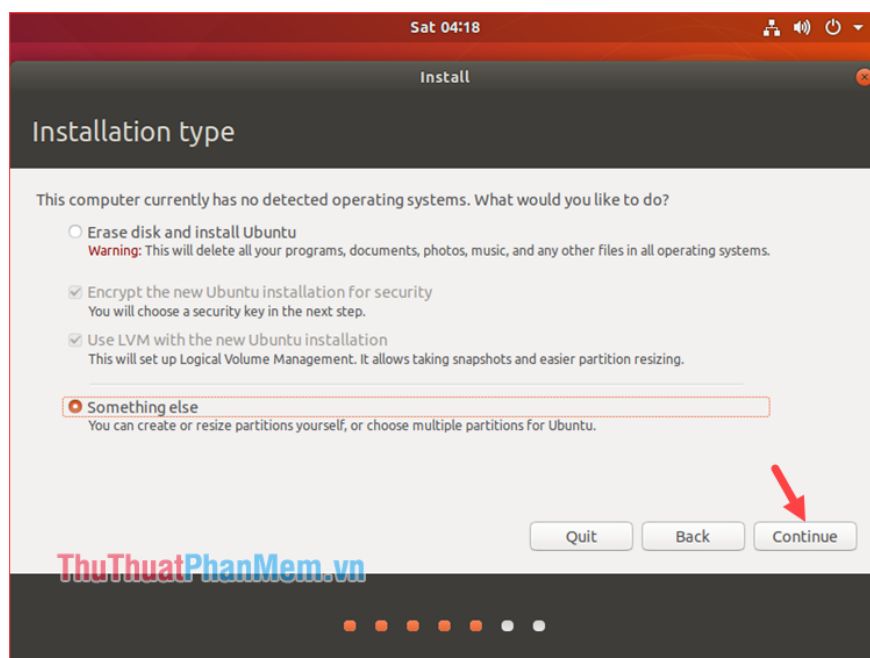


Step 5 : At the Installation Type interface, you will pay attention to 2 options:

- **Erase disk and install Ubuntu:** This option you need to pay attention, it will wipe all data in the hard drive when installing. Only select when your hard drive no longer has important data. If your computer has Ubuntu installed, you can select this option to install Ubuntu.

- **Something else:** If you want to install Ubuntu together with windows, you need to Check this option to create an Ubuntu installation partition.

Click **continue** to continue.



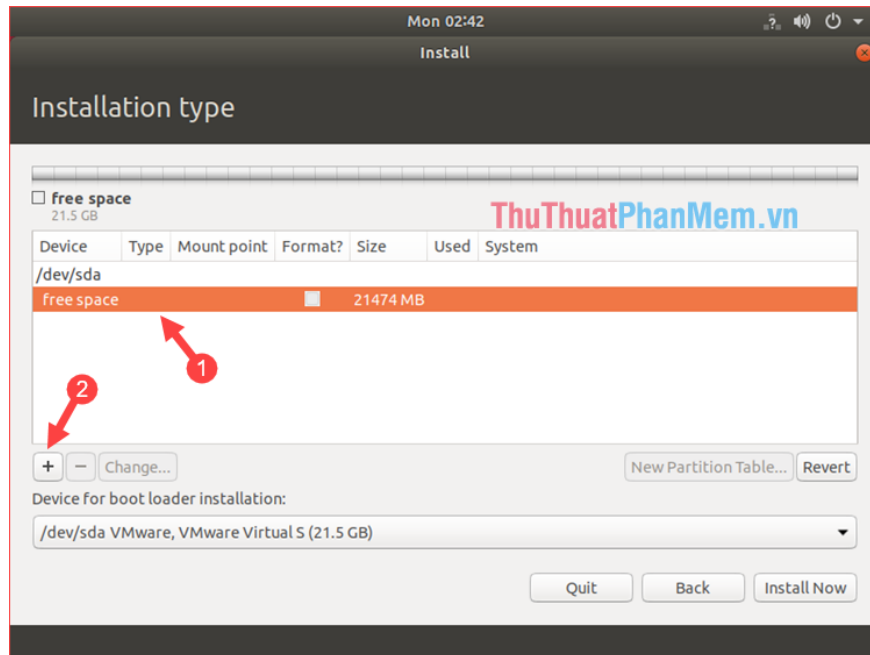
Step 6: After selecting **Something else** , the interface to create the Ubuntu installation partition appears. You can create the following partition type:

Swap Partition : This is the RAM partition for Ubuntu, you should choose the size of the Swap partition to double the amount of RAM in your computer.

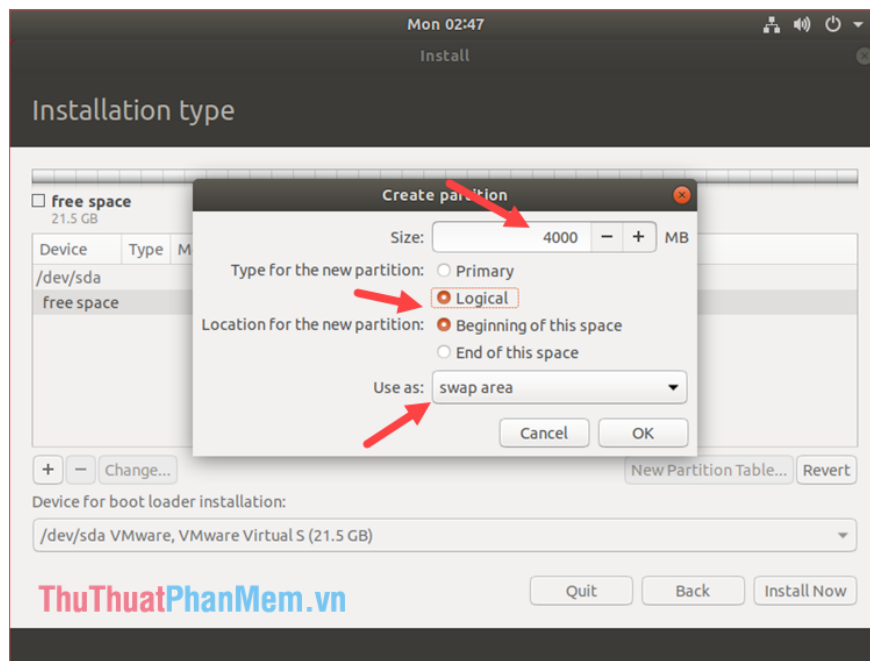
/ Partition : This partition is the repository of Ubuntu data, we will install Ubuntu into this partition.

How to create a partition as follows:

To create a Swap partition, click on the Free Space partition and then click the plus sign.



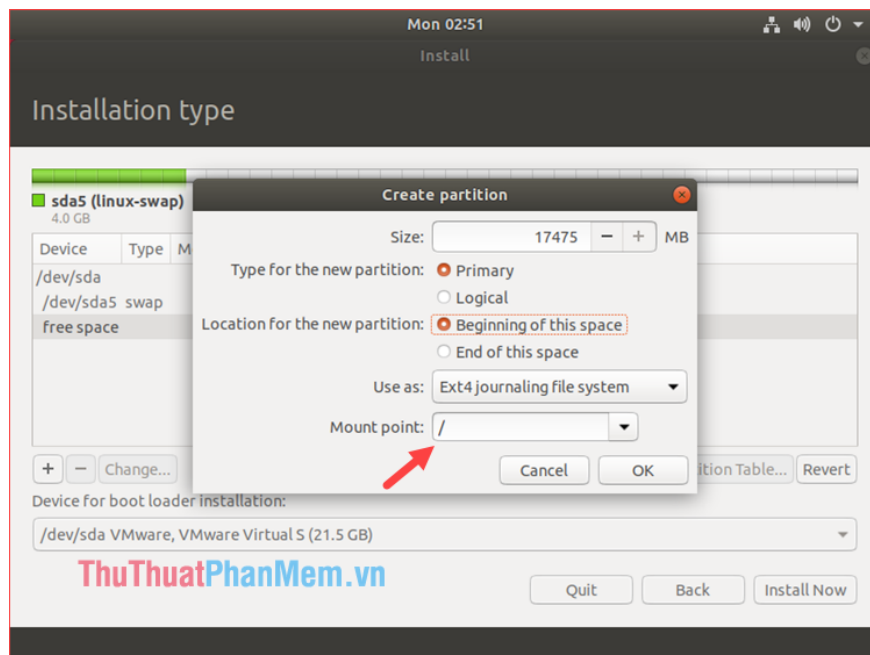
A small window appears, enter the amount of Ram in the Size box, then select the partition type is **Logical** , the **Location for the new partition** you choose **Beginning of this space** and the **Use as** select **Swap area** then click **OK** .



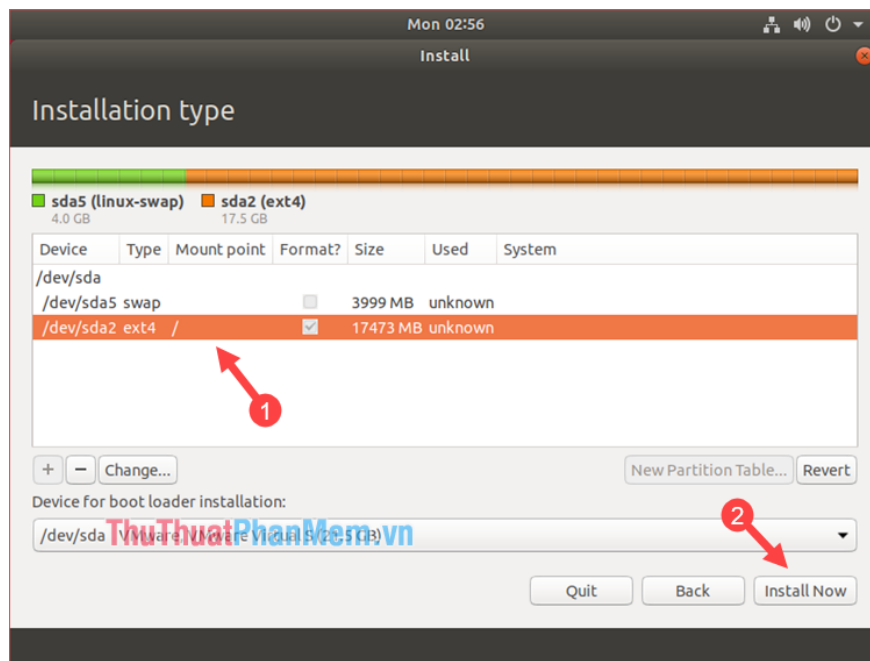
After creating the swap partition, we continue to click on free space and click the plus sign to create the partition /

You choose according to the picture below, **Use as** you default to **Ext4 journaling file system** , **Mount point** you choose /

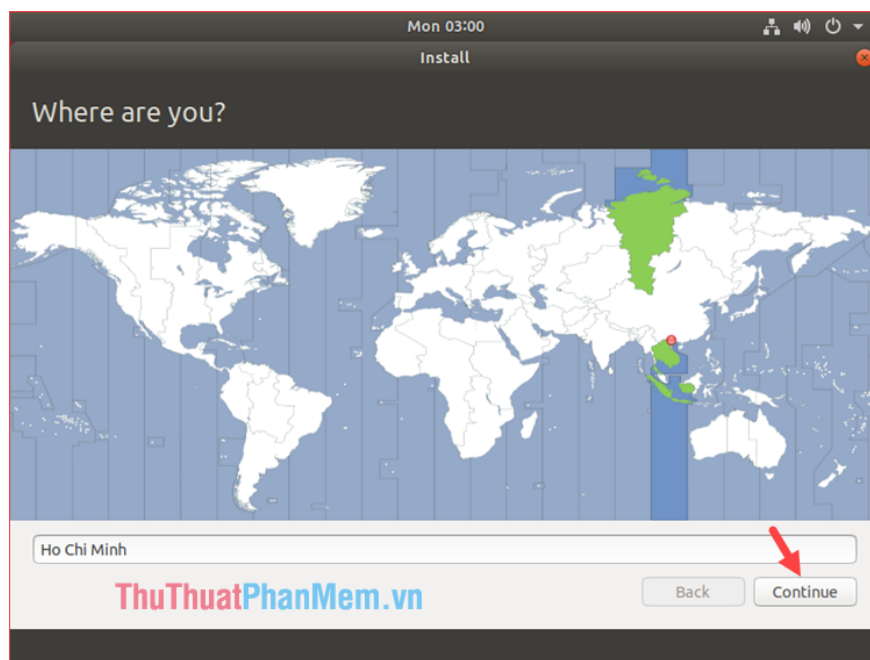
Finally click OK.



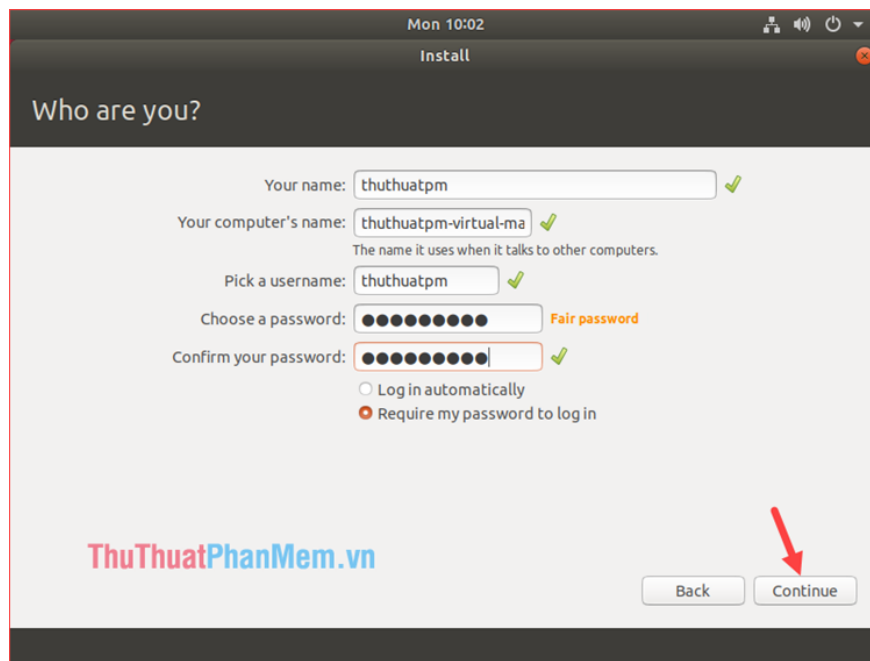
Step 7 : After creating 2 partitions, Swap and /, select the partition / and click **Install now** to install Ubuntu. If a message appears, click Continue.



Step 8 : Select the Vietnamese time zone, then click Continue:



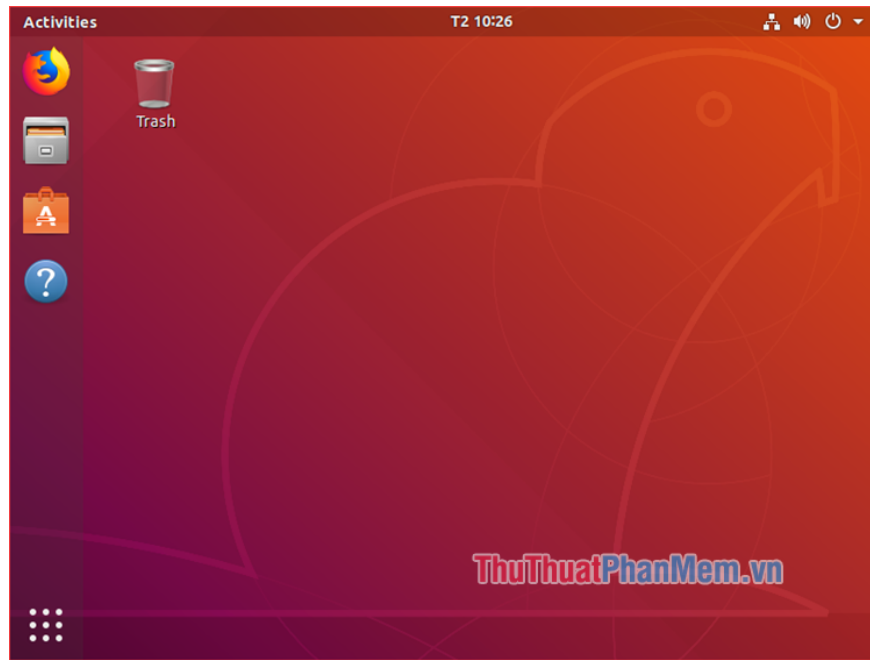
Step 9 : Enter your username and password and click **Continue**



Now our job is to wait for the Ubuntu installation process to complete and reset the computer is done:



When the computer boots at the boot menu, there will be two options for Ubuntu or Windows, which operating system you want to access, select that operating system. And this is the Desktop interface of Ubuntu operating system:



Above is a detailed guide on how to install Ubuntu with Windows 10, hopefully the article will help you know how to install Ubuntu easily. Good luck!

You finished reading the article "**How to install Ubuntu operating system in parallel with Windows 10**" edited by the [TipsMake](#) team. We hope this article has provided you with many useful tech tips and tricks. You can search for similar articles on tips and guides. Thank you for reading and for following us regularly.