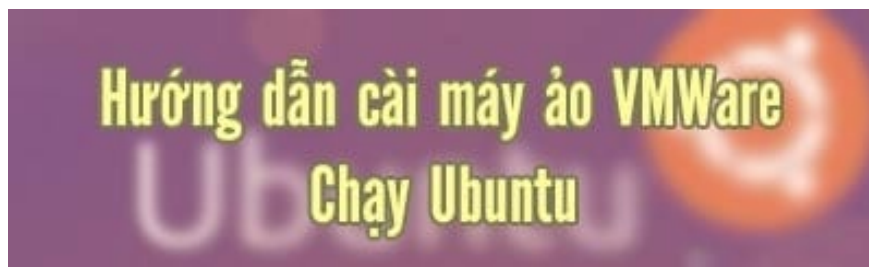


How to install Ubuntu in VMWare, installing Ubuntu on a VMware virtual machine.

Ubuntu is an operating system developed based on Linux, but it has a GUI (Guide-Based User Interface) that combines command-line input with a basic Linux interface. Installing Ubuntu isn't difficult, but if you just want to experience Ubuntu in the simplest and quickest way, installing Ubuntu in VMware is the best choice. The following guide from TipsMake will help you install Ubuntu on a VMware virtual machine.

Using VMWare to install Ubuntu is the fastest and most efficient way if you want to experience this Linux operating system on your computer. VMWare not only supports installing Ubuntu, but you can also install Windows 10 using VMWare , providing full support for all Windows 10 features, just like a physical installation on your machine.



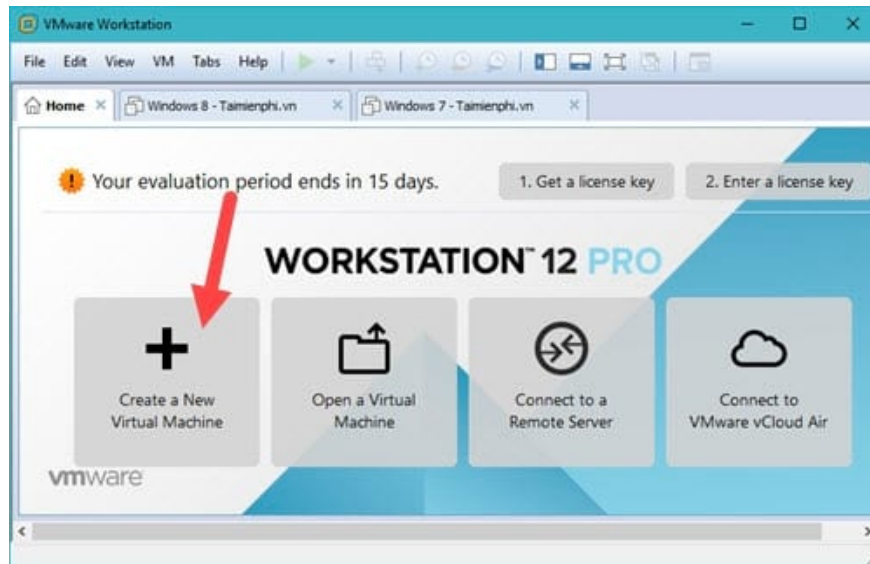
Using VMWare to install a virtual machine on Ubuntu also saves you a lot of installation steps, including partitioning and formatting. Let Ubuntu handle everything, and all you have to do is click and install Ubuntu.

[Guide to installing Ubuntu in VMWare, installing Ubuntu on a VMWare virtual machine.](#)

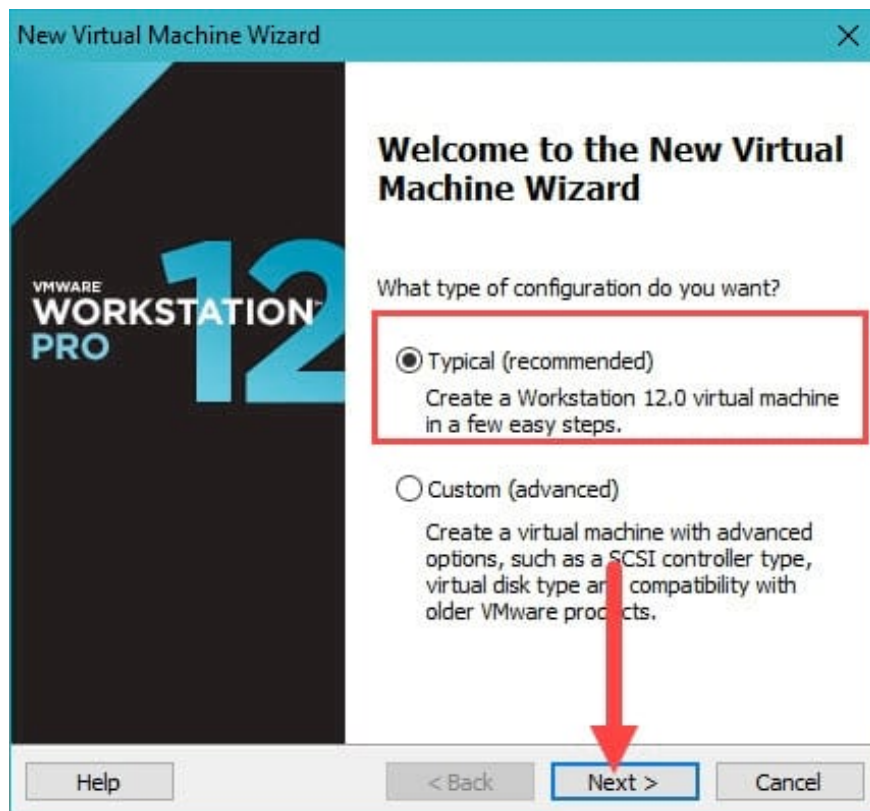
Step 1: First, make sure you need VMWare to use it. Download VMWare .

- Additionally, you need to download Ubuntu to your computer if you want to install Ubuntu in VMWare. Download Ubuntu .

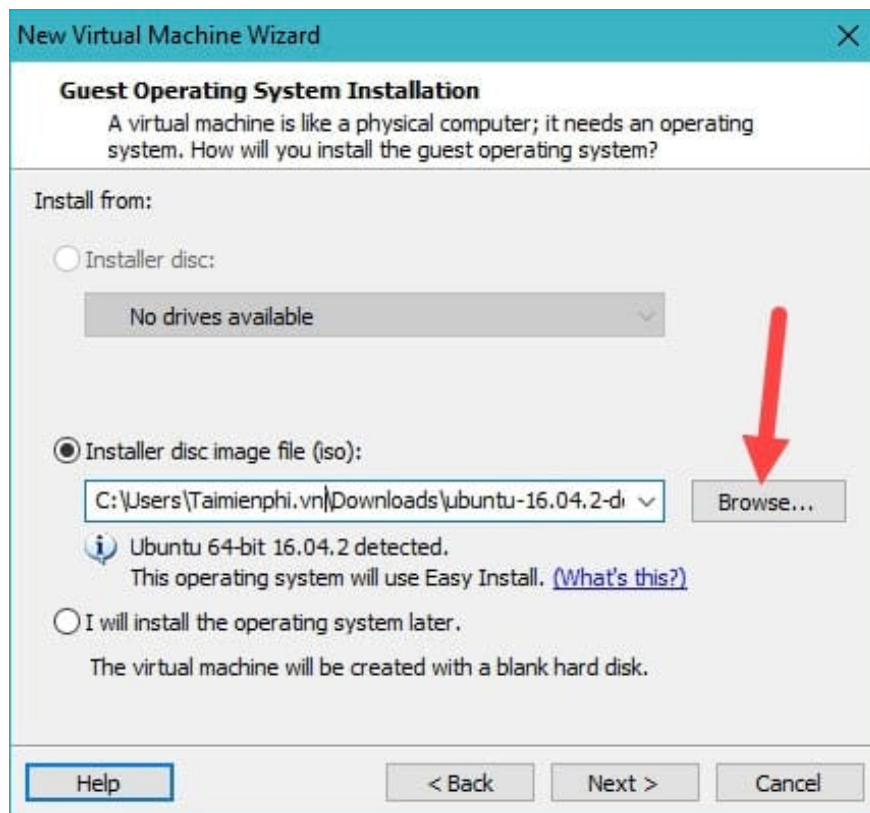
Step 2: After completing **Step 1** , open **VMWare** and select **Create a New Virtual Machine** .



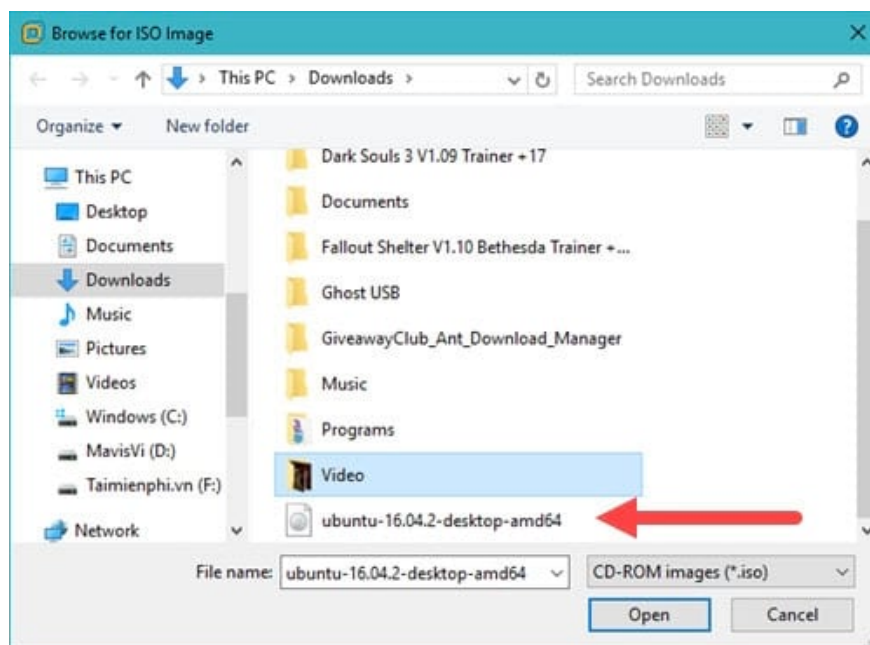
Step 3: Leave the default format as **Typical** and then press **Next** to continue.



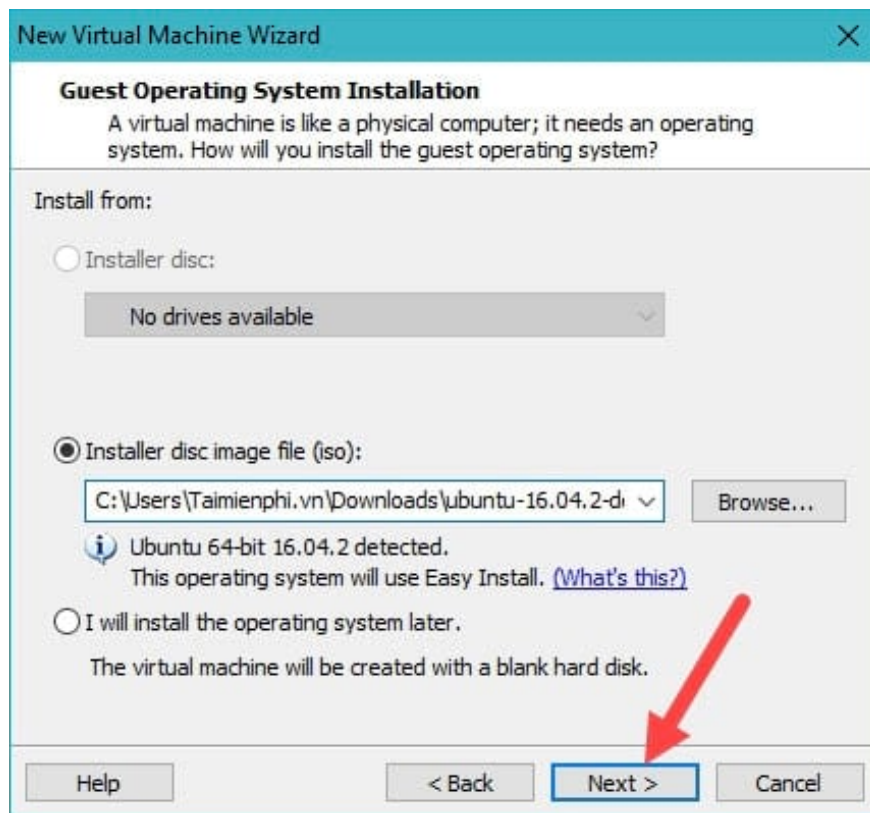
Step 4: Select "**Installer disc image file**" and then "**Browse**" to find the path to your Ubuntu ISO file.



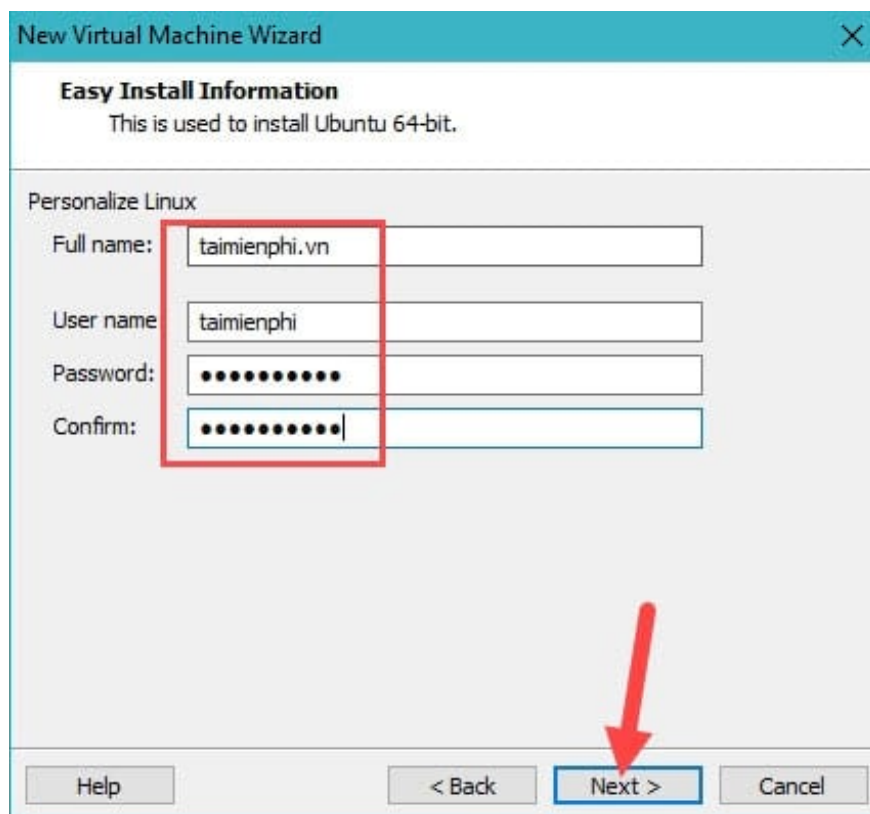
Step 5: Select the **Ubuntu** ISO file you downloaded earlier and **click Open** .



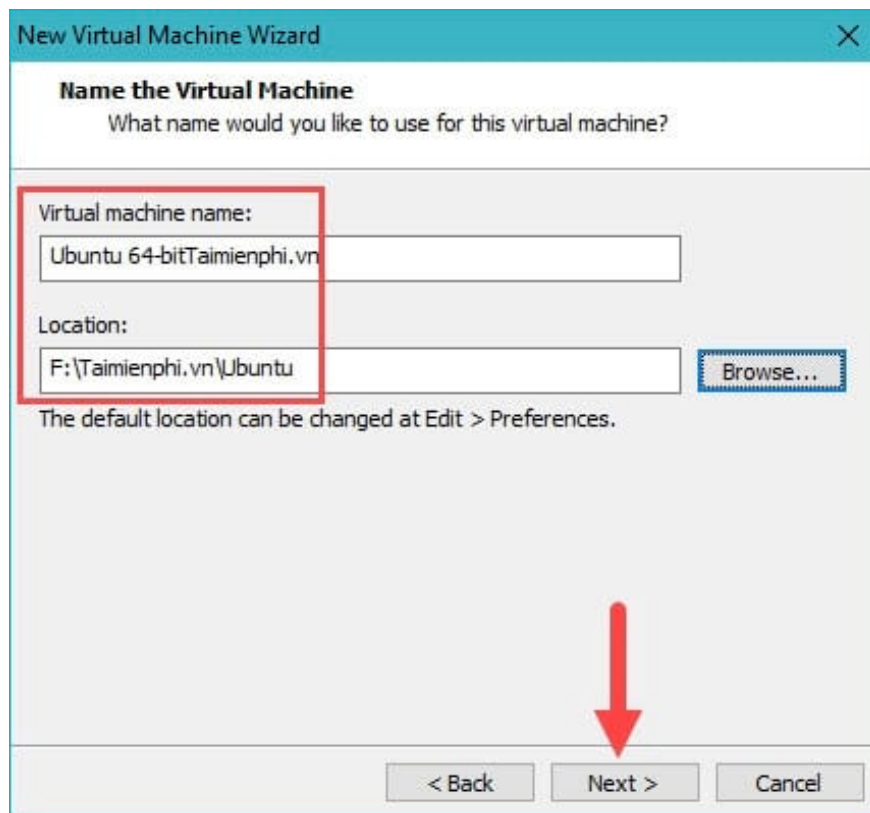
Step 6: Return to the file selection interface; simply press **Next** to proceed to the next step.



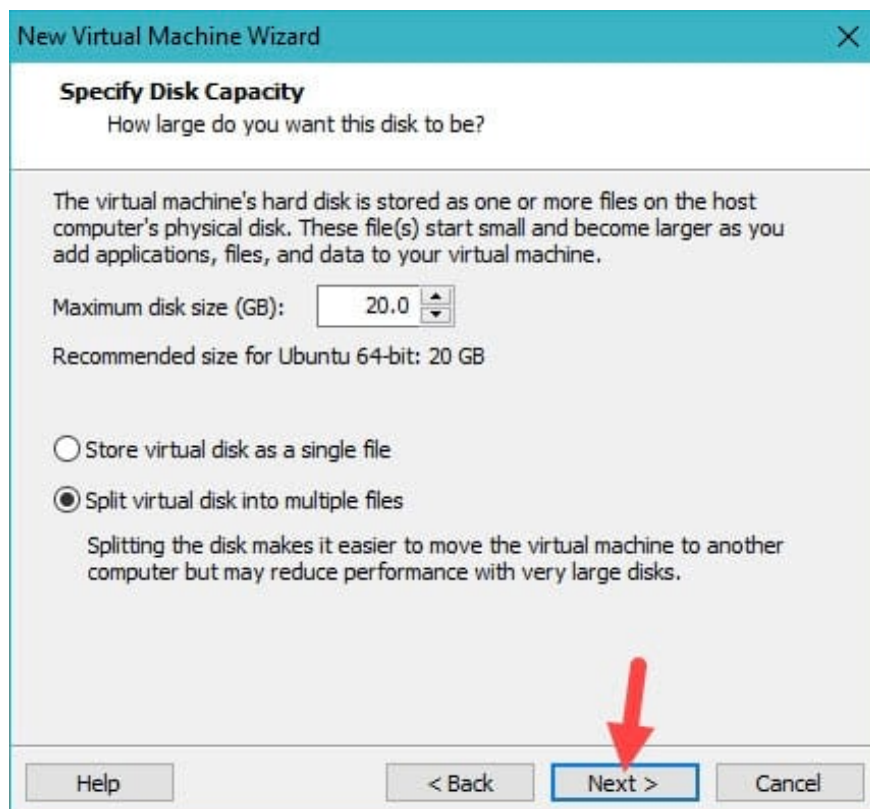
Step 7: Enter your username and password for Ubuntu when you log in.



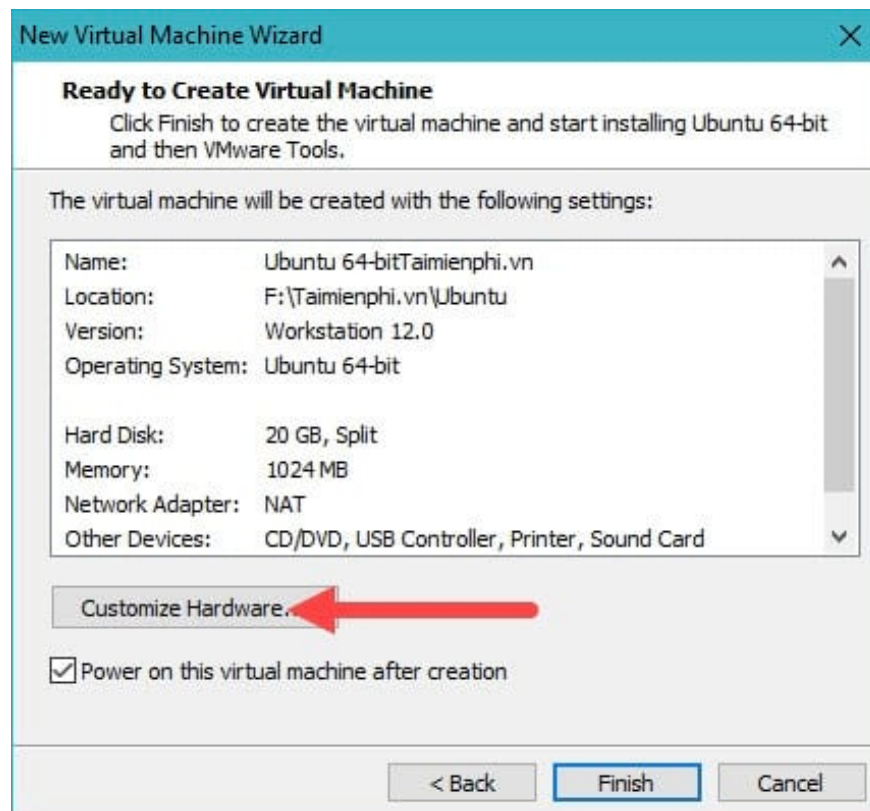
Step 8: Next, choose the display name for the machine and the data storage location for VMWare Ubuntu.



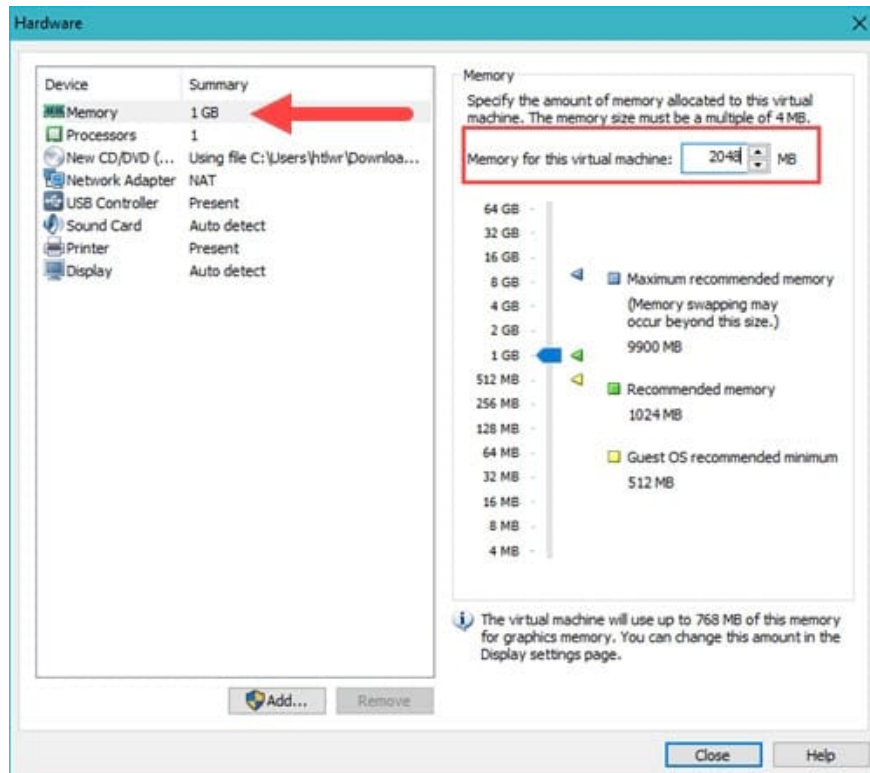
Step 9: This process selects the maximum amount of space Ubuntu is given. You can change this if you have plenty of free space on your hard drive; otherwise, just keep clicking **Next** .



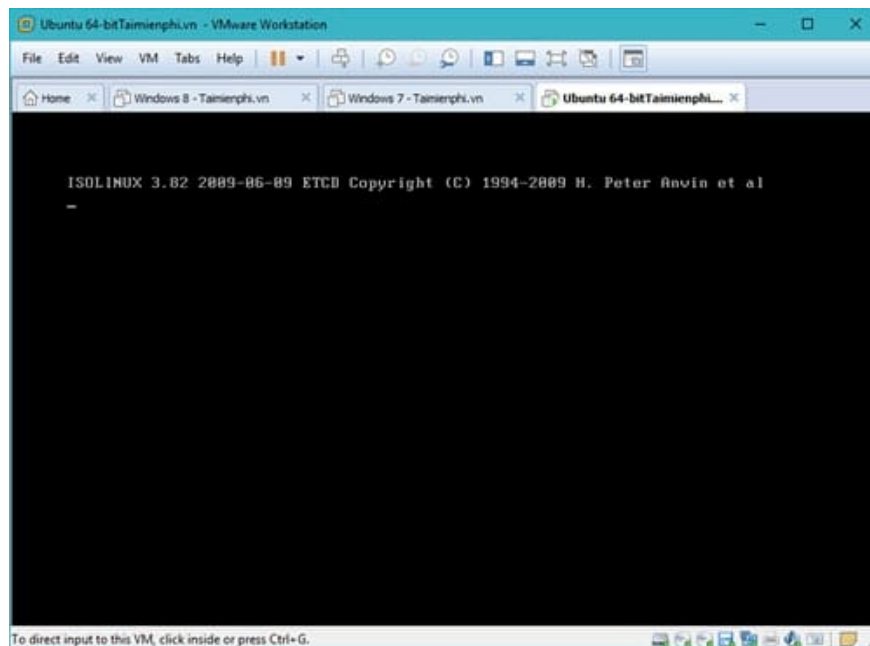
Step 10: This is the configuration customization step. Generally, you **should increase your RAM** slightly for smoother performance and less lag. However, be aware that this may affect your main computer.



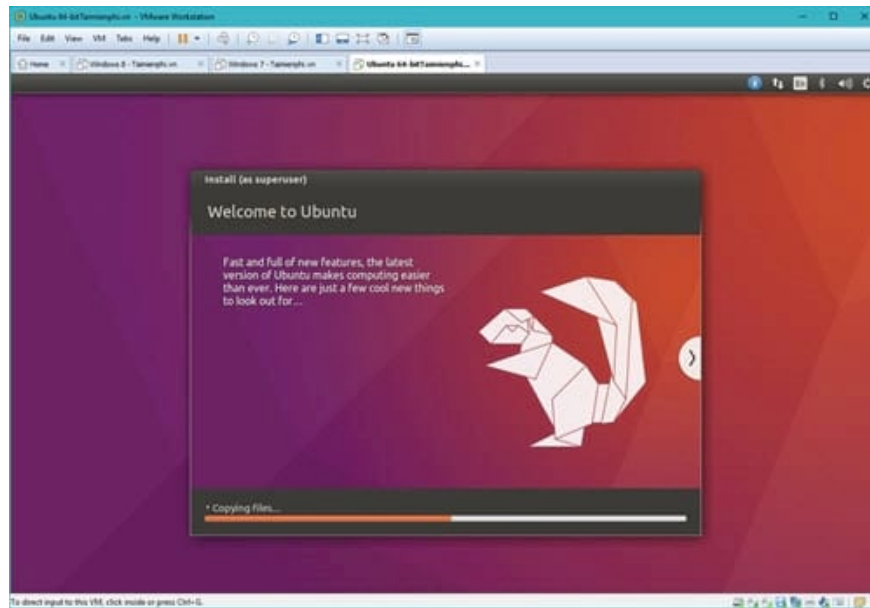
Step 11: Besides RAM, which can be adjusted up to a maximum of 64 GB, you can also customize many other things such as CPU, DVD drive, network, and USB connections.



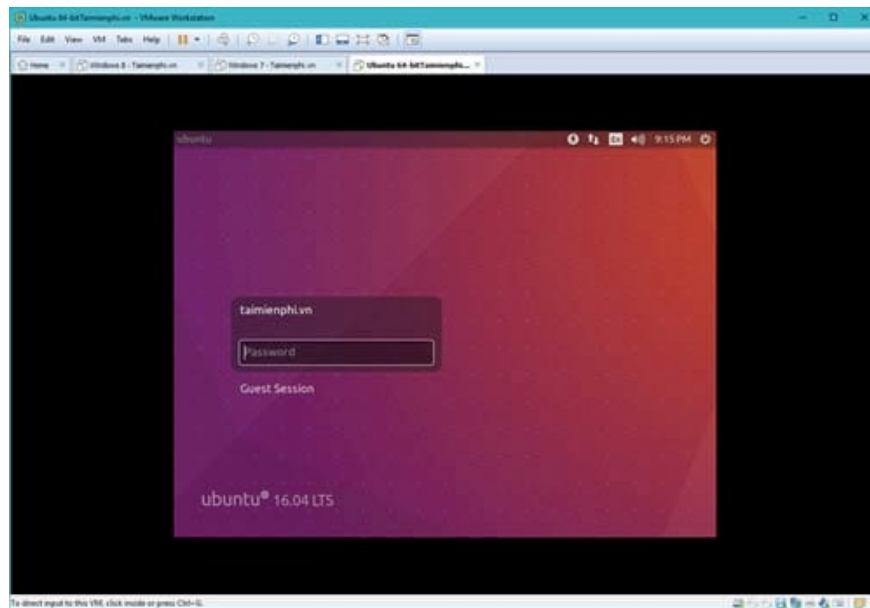
Step 12: At this point, all you have to do is wait for the system to install Ubuntu in VMWare.



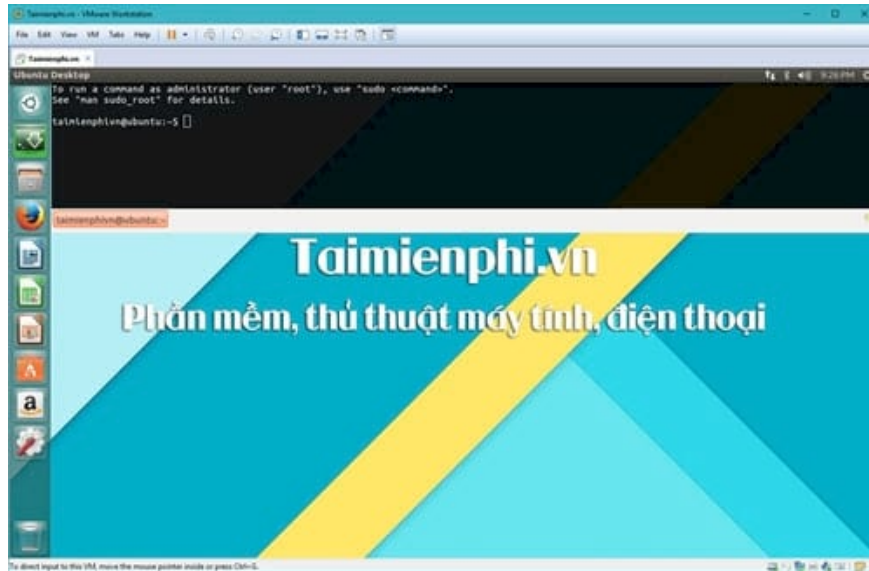
VMWare will optimize the entire installation process for you.



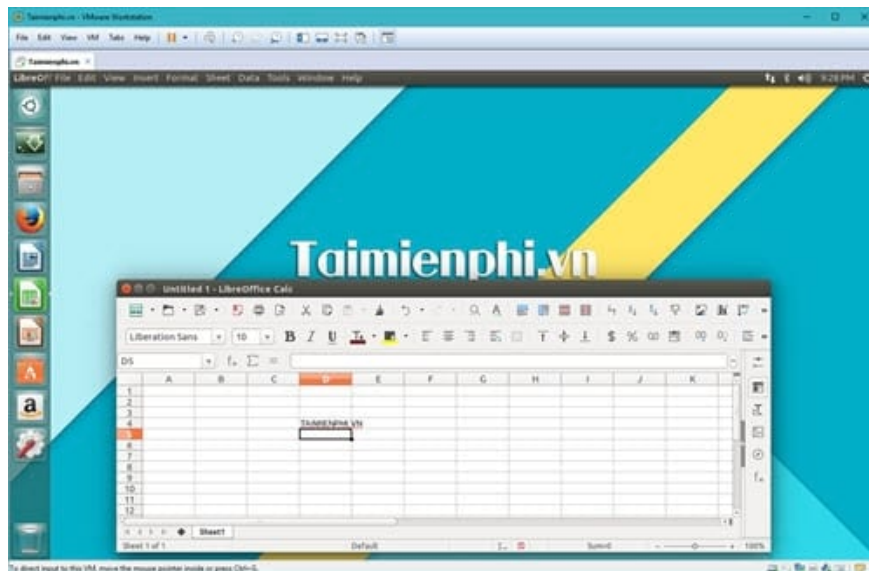
After installation, you can log in and use it.



The Ubuntu interface is slightly different from Windows.



Try LibreOffice on Ubuntu for free.



So, we've finished installing Ubuntu in VMWare. You can now experience VMWare on your computer without worrying about any other issues. Ubuntu doesn't directly support Vietnamese, but if you want, there's a way to install Unikey on Ubuntu. Refer to the guide on how to install Unikey on Ubuntu to be able to use Vietnamese.

Additionally, Ubuntu has a very useful application called Terminal. If you want to explore more about Terminal and how to access it quickly, please read our article; TipsMake has compiled and provided instructions on how to access Terminal quickly .

You finished reading the article "**How to install Ubuntu in VMWare, installing Ubuntu on a VMware virtual machine.**" edited by the [TipsMake](#) team. We hope this article has provided you with many useful tech tips and tricks. You can search for similar articles on tips and guides. Thank you for reading and for following us regularly.

