

How to Install TrueType Fonts on Ubuntu

Ubuntu users often need TrueType fonts for Open Office, Gimp, and other programs. Using this guide, you can either install one font at a time automatically or install multiple fonts manually. Note: If you are using KDE, double-clicking on...

Method 1 of 3:

Getting Font Viewer Root Privileges to Install a Font

1.



Open a terminal window

2.



```
doha@doha-laptop: ~  
File Edit View Terminal Help  
doha@doha-laptop:~$ sudo gnome-f
```

A terminal window titled "doha@doha-laptop: ~" with a menu bar containing "File Edit View Terminal Help". The command "sudo gnome-f" is partially entered at the prompt. A red mouse cursor points to the "Edit" menu item.

Type "sudo gnome-font-viewer" and hit enter (replace with the path to the font file you want to install!)

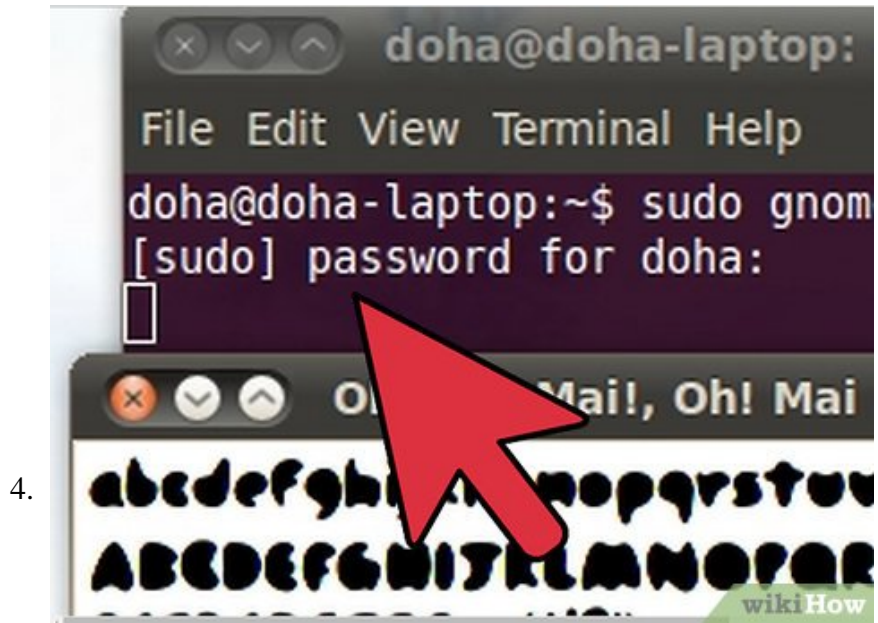
3.



```
doha@doha-laptop: ~  
File Edit View Terminal Help  
doha@doha-laptop:~$ sudo gnome-f  
[sudo] password for doha: 
```

The terminal window shows the command "sudo gnome-f" completed. The prompt "[sudo] password for doha:" is displayed with an empty password input field. A red mouse cursor points to the input field.

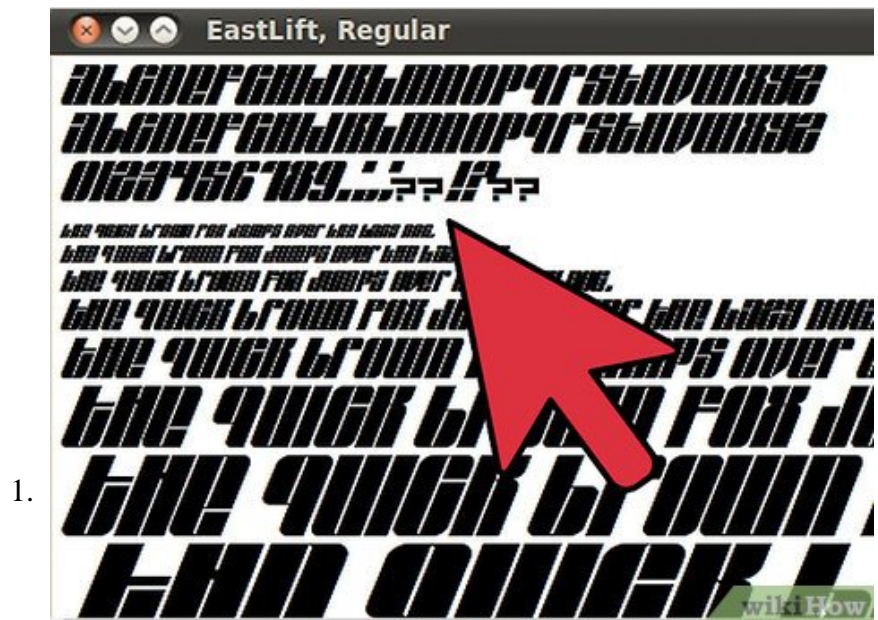
Enter your user password when prompted



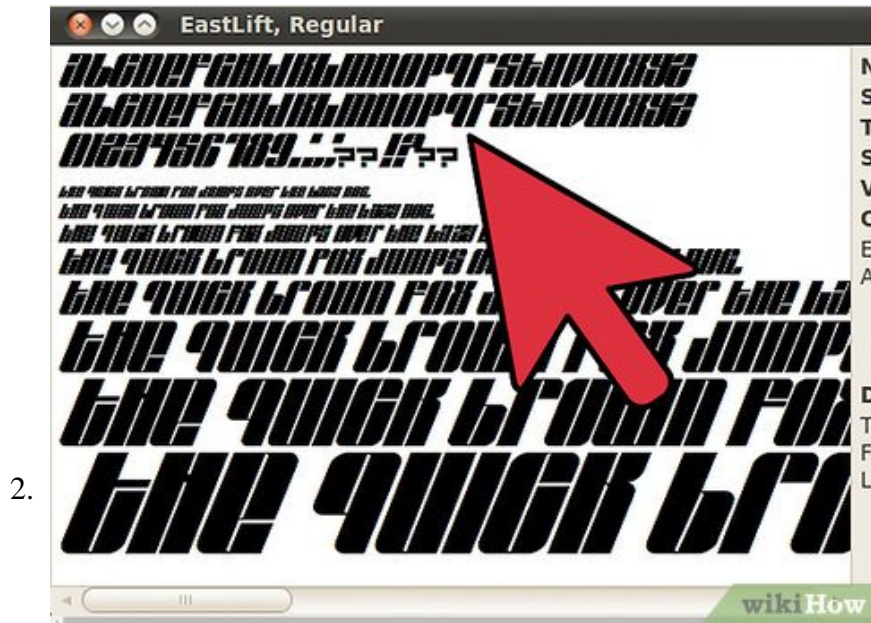
Click "Install". Job done!

Method 2 of 3:

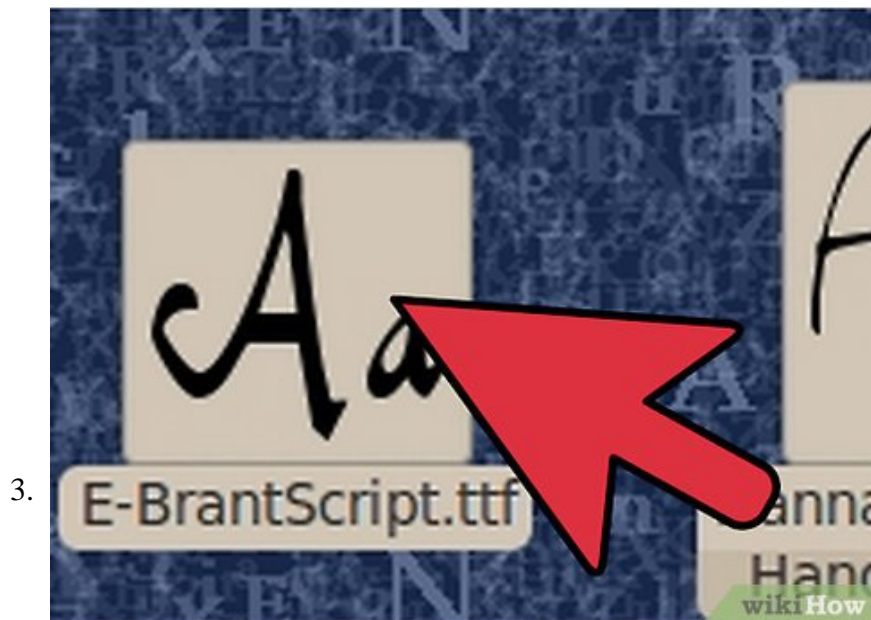
Automatically Install a Single Font



Download a TrueType font. (The file extension will be .ttf.) Unzip your file if necessary.



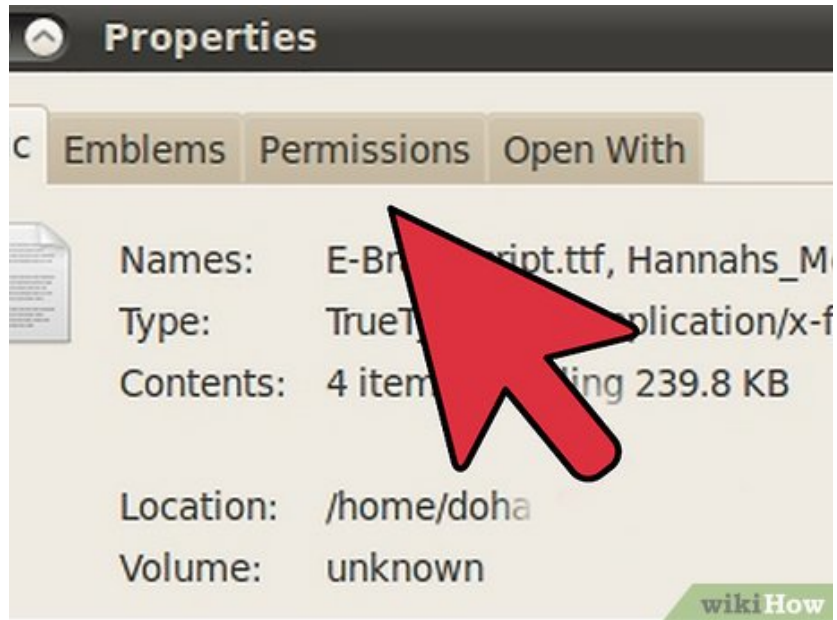
Double click on the downloaded file. This should open a font-viewer window.



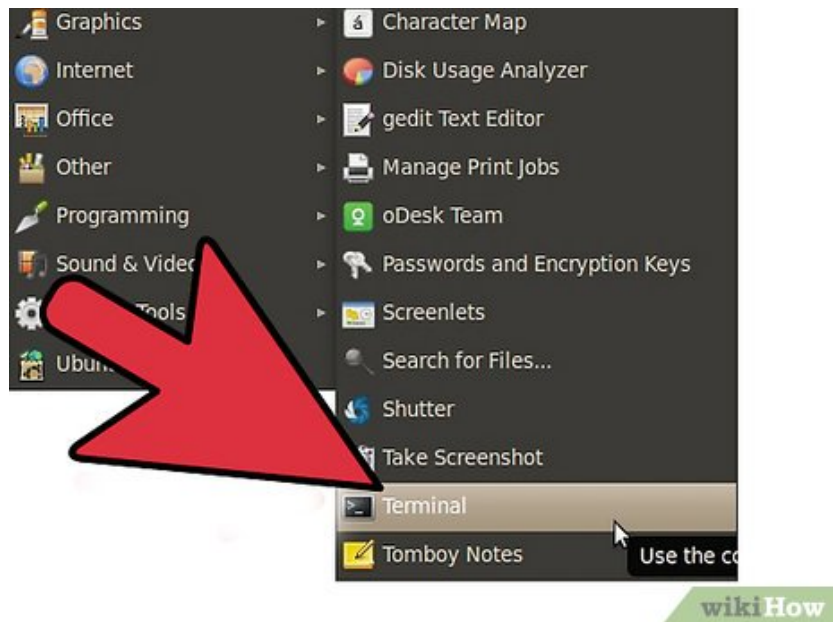
Click **Install Font** in the lower right-hand corner. Congratulations! Your font has been installed.

Method 3 of 3:

Manually Install Multiple Fonts

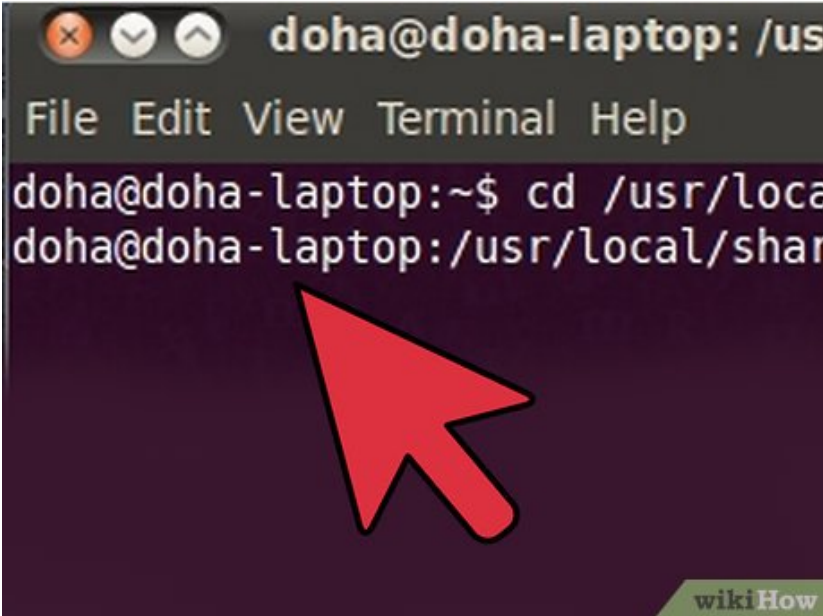


Download TrueType fonts. (The file extension will be .ttf or .otf) Unzip your files if necessary.



Move your files to the ~/ Directory. The ~/ Directory is your home folder. This means that if you were logged in as cruddpuppet, the directory would be /home/cruddpuppet/ .

3.

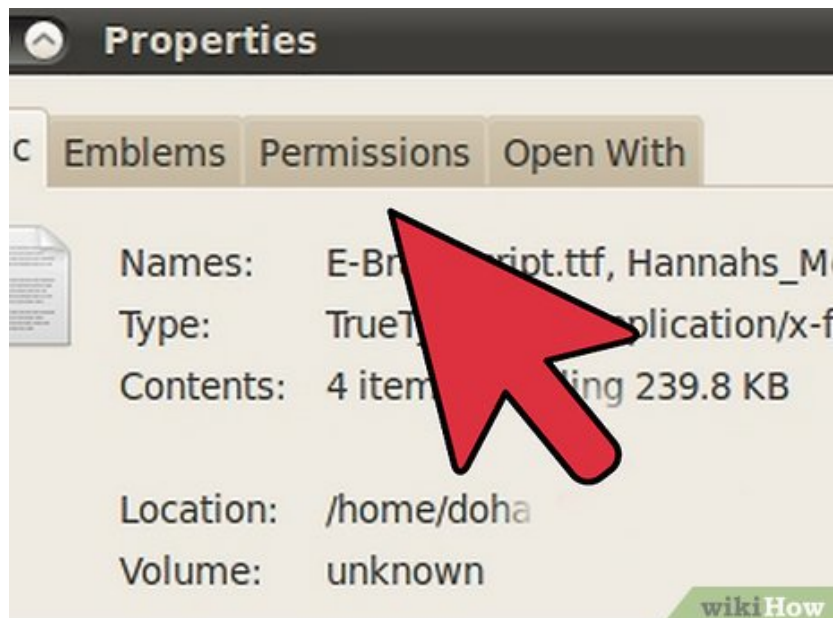


A terminal window titled 'doha@doha-laptop: /usr' with a menu bar containing 'File Edit View Terminal Help'. The terminal shows the command 'cd /usr/local' being entered, and the prompt changes to 'doha@doha-laptop: /usr/local/share'. A red mouse cursor points to the terminal output. A 'wikiHow' logo is in the bottom right corner.

```
doha@doha-laptop: /usr
File Edit View Terminal Help
doha@doha-laptop:~$ cd /usr/local
doha@doha-laptop: /usr/local/share
```

Go to **Applications > Accessories > Terminal**. This will take you to the terminal.

4.



Type **'cd /usr/local/share/fonts/truetype'** without quotes into the command line. This is a directory for user-added fonts in linux.

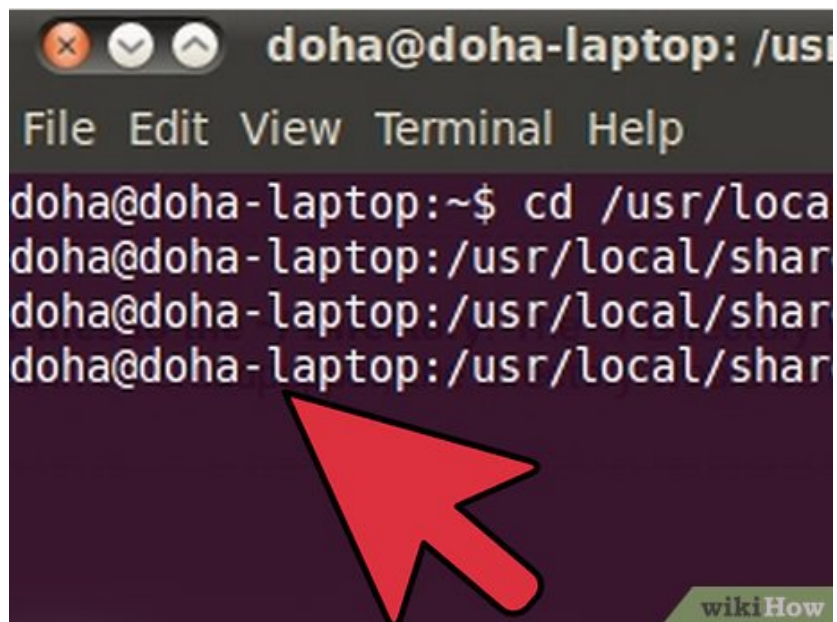
5.

A terminal window titled 'doha@doha-laptop: /usr' with a menu bar 'File Edit View Terminal Help'. The terminal shows the command 'cd /usr/local' being entered, followed by the prompt 'doha@doha-laptop: /usr/local/shar'. A large red arrow points to the command line. A 'wikiHow' logo is in the bottom right corner.

```
doha@doha-laptop: /usr
File Edit View Terminal Help
doha@doha-laptop:~$ cd /usr/local
doha@doha-laptop: /usr/local/shar
doha@doha-laptop: /usr/local/shar
```

Type **'sudo mkdir myfonts'** without quotes. This will make a directory called 'myfonts' in which to store your fonts. If you're not logged in as root, you will be prompted to provide your password.

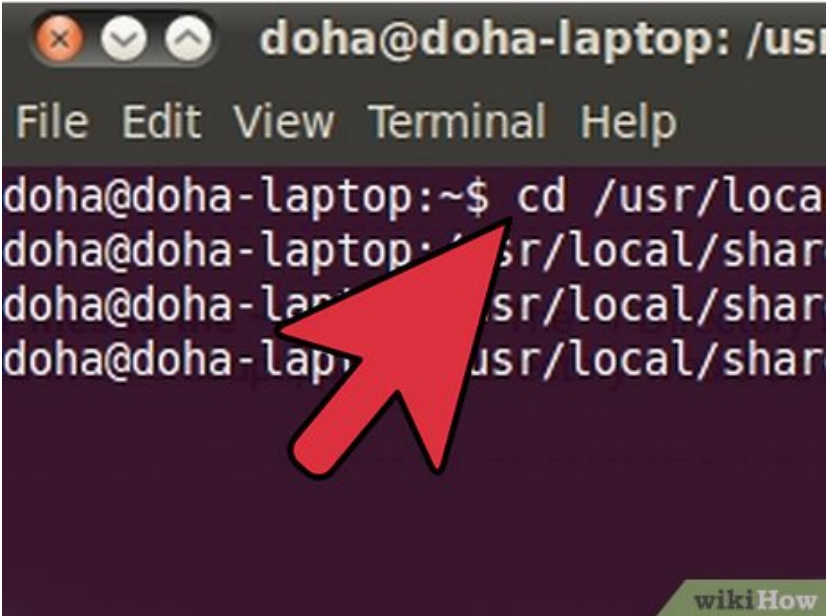
6.

A terminal window titled 'doha@doha-laptop: /usr' with a menu bar 'File Edit View Terminal Help'. The terminal shows the command 'cd /usr/local' being entered, followed by the prompt 'doha@doha-laptop: /usr/local/shar'. A large red arrow points to the command line. A 'wikiHow' logo is in the bottom right corner.

```
doha@doha-laptop: /usr
File Edit View Terminal Help
doha@doha-laptop:~$ cd /usr/local
doha@doha-laptop: /usr/local/shar
doha@doha-laptop: /usr/local/shar
doha@doha-laptop: /usr/local/shar
```

Type **'cd myfonts'** without quotes. This moves you into the new directory.

7.

A terminal window titled 'doha@doha-laptop: /usr' with a menu bar containing 'File Edit View Terminal Help'. The terminal shows the user navigating through directories: 'doha@doha-laptop:~\$ cd /usr/local', 'doha@doha-laptop:~\$ cd /usr/local/share', 'doha@doha-laptop:~\$ cd /usr/local/share', and 'doha@doha-laptop:~\$ cd /usr/local/share'. A large red mouse cursor arrow points to the second 'cd /usr/local/share' command. A 'wikiHow' logo is in the bottom right corner.

```
doha@doha-laptop: /usr
File Edit View Terminal Help
doha@doha-laptop:~$ cd /usr/local
doha@doha-laptop:~$ cd /usr/local/share
doha@doha-laptop:~$ cd /usr/local/share
doha@doha-laptop:~$ cd /usr/local/share
```

Type **'sudo cp ~/fontname.ttf .'** without quotes. This moves the TrueType fonts into your new directory. (Alternatively, type **'sudo cp ~/.ttf .'**; the ***** acts as a wildcard, allowing you to move all your fonts from the **~/** Directory at once.)

8.

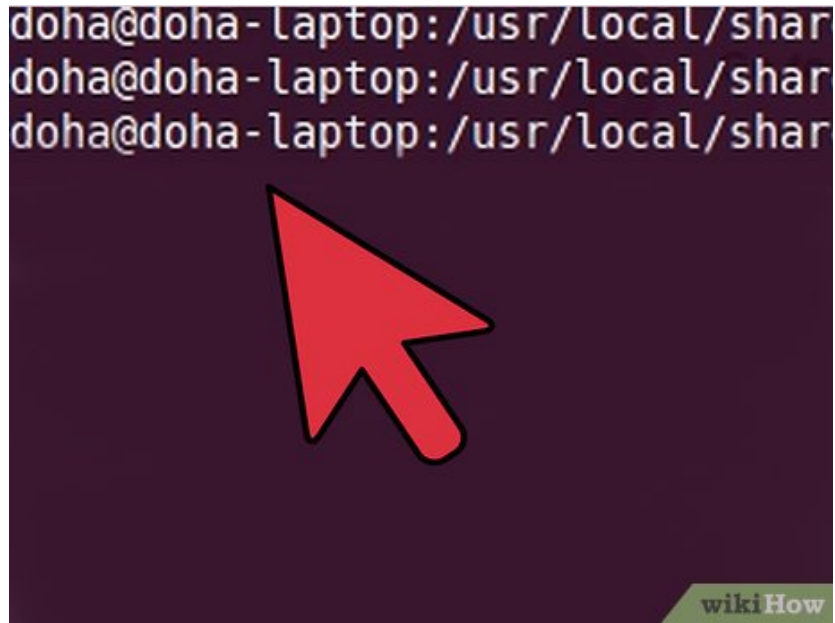
A terminal window showing the command 'doha@doha-laptop:~\$ sudo cp ~/.ttf .' being entered. A large red mouse cursor arrow points to the command. A 'wikiHow' logo is in the bottom right corner.

```
doha@doha-laptop:~$ sudo cp ~/.ttf .
```

Type **'sudo chown root fontname.ttf'** (or ***.ttf**) to change file owner to the root.

9.

```
doha@doha-laptop: /usr/local/share
doha@doha-laptop: /usr/local/share
doha@doha-laptop: /usr/local/share
```



Type `'cd ..'` and then `'fc-cache'` without quotes to add newly-added fonts to system-wide font index, so all applications can see them.

You finished reading the article "**How to Install TrueType Fonts on Ubuntu**" edited by the [TipsMake](#) team. We hope this article has provided you with many useful tech tips and tricks. You can search for similar articles on tips and guides. Thank you for reading and for following us regularly.